

B.M. 34-14 (U.S. 4132-W767)
 About 3 mi. W along 25th St. & So Palos Verdes Drive from the junction of 25th St. & Gaffney St. at San Pedro. About 1 mi. along So Palos Verdes Dr. from the junction of 25th St. on the E. bank of a ravine at the junction of a road leading to a ranch house 38 3/4 ft. N of the E. of Palos Verdes Dr. South, 16 ft. W of E. of the ranch road 13 ft. N of a white wooden structure post and about 1 ft. higher than Palos Verdes Dr. South. A steel disc stamped W187-1946 and set in top top of a concrete post 0.2 ft. above ground. 1953 Adj. Elev. 234.156. F.B. 1955, p. 14.

LOMITA BLDG. DIST. NO. 7.I

PROFILE ALIGNMENT AND GRADE OF P.C. 4021
 SANITARY SEWERS PAGE 1
 TO BE CONSTRUCTED IN DOUBLE SCALE

TRACT N° 22835 (24,418)
 PRIVATE CONTRACT NO. 4021 (13)

W.S. 27
 7 SHEETS, 13 PAGES
 SCALE: 1" = 10' APRIL 1956

PREPARED IN THE OFFICES OF
 H.R. LOVETT & ASSOCIATES, INC.

By J.O. Montgomery
 REG. C. E. NO. 9152
 FOR LEGEND SEE PLAN NO. S-A-64

- NOTES
- PROFILES STAKED ON THE PROPERTY LINE OR PROPERTY LINE PRODUCED AT RIGHT ANGLES TO THE SEWER LINE AT THE CENTER LINE OF EACH MANHOLE.
 - NO REPRESENTATIVE OF THE COUNTY ENGINEER WILL SURVEY OR LAY OUT ANY PORTION OF THE WORK.
 - THE OWNER OR HIS AUTHORIZED REPRESENTATIVE SHALL FURNISH THE COUNTY ENGINEER WITH GRADE SHEETS AND STATION FOR ALL HOUSE LATERALS AND Y BRANCHES AND SHALL PROVIDE STAKES FOR THEM AT THEIR PROPER LOCATIONS WITH STATION AND PLAINLY MARKED. ANY CHANGE IN LOCATION SHALL BE REQUESTED BY WRITING BY THE OWNER OR HIS REPRESENTATIVE.
 - NO REVISIONS SHALL BE MADE IN THESE PLANS WITHOUT THE APPROVAL OF THE COUNTY ENGINEER.
 - USE STANDARD MANHOLE FRAMES AND COVERS, S.A.-117.
 - USE STANDARD STRENGTH PIPE EXCEPT AS NOTED.
 - USE CHAMFER MORTAR FOR ALL WITHSPREAD CLAY PIPE JOINTS.
 - RESERVOIR ALL TRENCH WITHIN PAVED AREA TO MEET L. A. COUNTY ROAD DEPT. OR CALIF. STATE HIGHWAY DEPT. SPECIFICATIONS IN ACCORDANCE WITH PERMITS.
 - SHOULDER FORD NOT OF SEWER AT POINTS OF INTERFERENCE WITH POLE, S.A.119.
 - HOUSE LATERALS TO BE CONSTRUCTED WITH INVERTS AT PROPERTY LINE. SEE PERMITS FOR CURB GRADIENT EXCEPT AS NOTED.
 - AN STRUCTURE SHALL BE BUILT SEWER STRUCTURE S.A.-104 EXCEPT AS NOTED.
 - FOR ALLOWANCE MAKE USE FORMULA NO. 1000, SPEC. SEC. 24.
 - PROFILES IN CIRCLES AT END OF HOUSE LATERALS INDICATE DEPTH BELOW CURB GRADE AT PROPERTY LINE.
 - THE PRIVATE ENGINEER IS TO FURNISH THE HOUSE LATERAL DEPTH AT THE PROPERTY LINE BELOW THE TOP OF CURB ELEVATION FOR EACH HOUSE LATERAL, ON THE GRADE SHEET.
 - (a) NO CONSTRUCTION SHALL BE PERMITTED IN FILLED AREAS UNLESS ACCEPTABLE CERTIFICATION IS SUBMITTED TO THE CONSTRUCTION DIVISION OF THE COUNTY ENGINEER'S DEPARTMENT THAT CONSTRUCTION IS GREATER THAN 80%.
 - (b) IF CONSTRUCTION IS LESS THAN 80%, THE SEWER MUST BE CRODDED AS SHOWN ON THE PLANS (SEE DETAIL SHOWN AT LEFT).
 - (c) IF CONSTRUCTION IS GREATER THAN 80%, CRODGING IS NOT REQUIRED. HOWEVER, JOINT COMPARTMENTS MUST BE SUBSTITUTED FOR JOINTS IN FILLED AREAS.

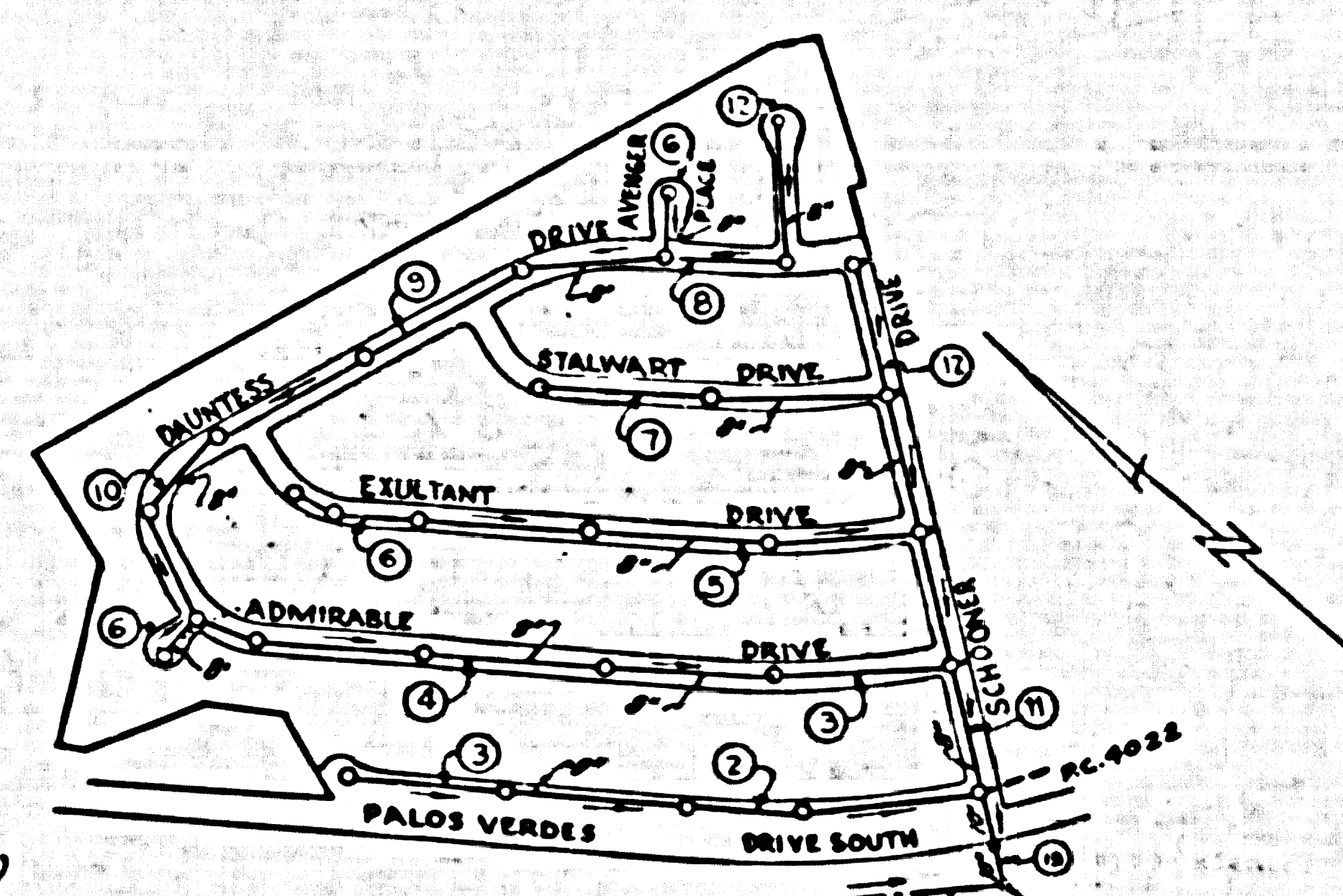
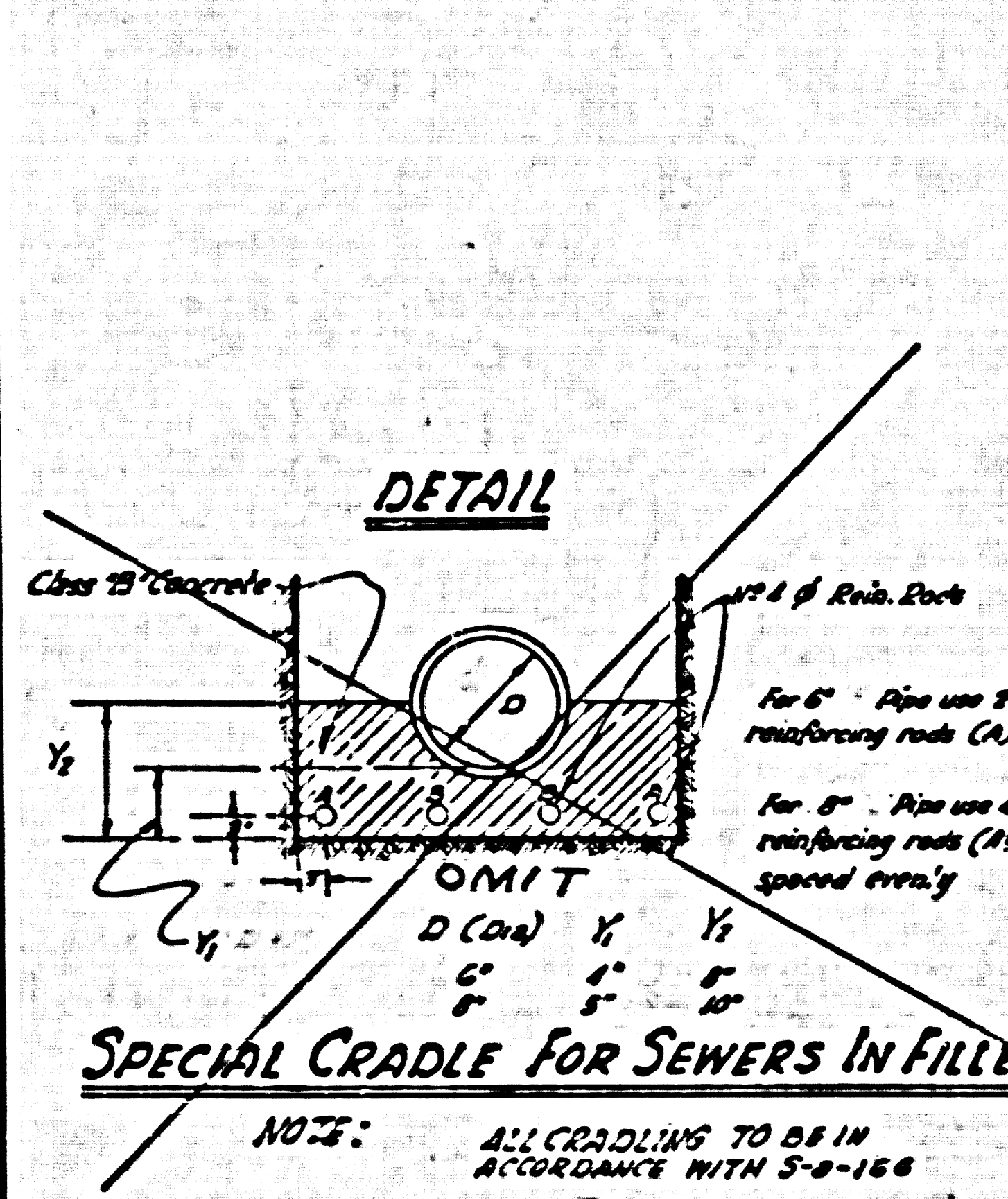
TABLE	
SHEET N°	PAGES
1	142
2	344
3	546
4	748
5	940
6	1142
7	13

NO CHARGE FOR CONNECTION
 7.27.56
 8.25.56

REVISION
 RELOCATE M.H.'s, pg 2 from 3124.18 to 3124.08, pg 3 from 3125.50 to 3125.60
 Approved: J.K. Duke 10-15-56
 M.S. by L.A. 4-24-56, REG. L.A. 944

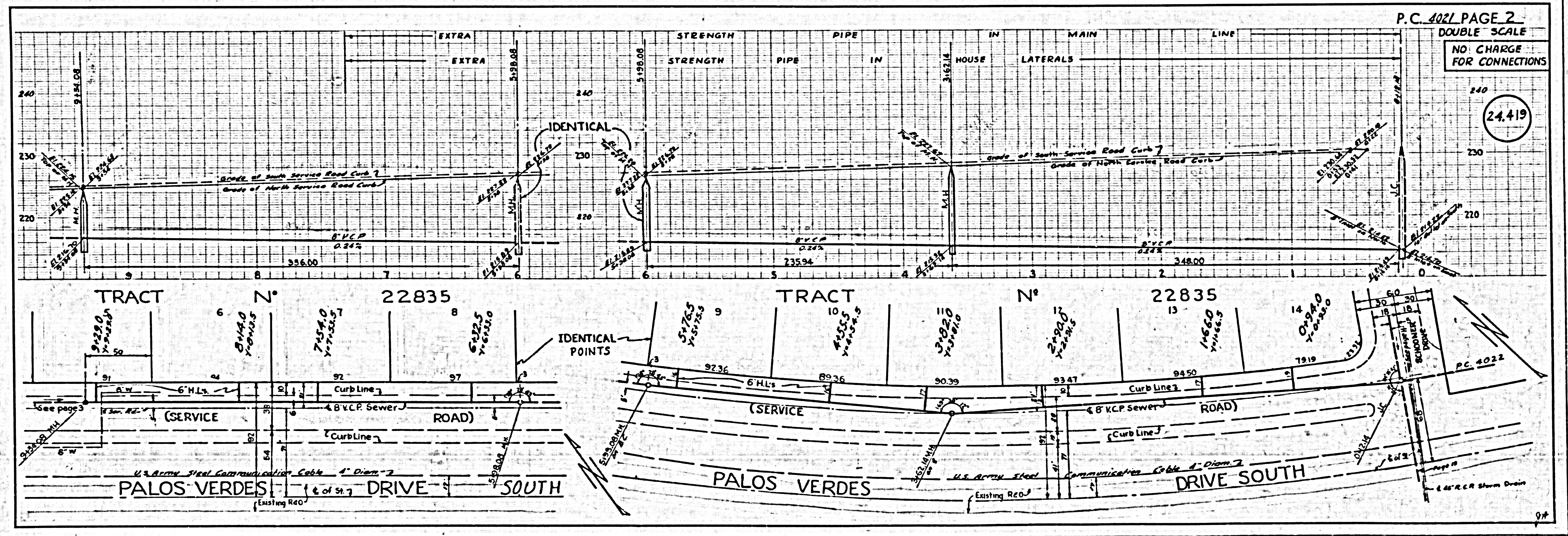
GRADES TO WHICH THIS IMPROVEMENT IS TO BE CONSTRUCTED ARE SHOWN ON PLANS AND PROFILES GRADE POINTS FOR TOP OF CURB, CENTER LINE OF STREET, OR CENTER LINE OF ALLEYS ARE SHOWN BY CIRCLES ON PROFILES AT ALL POINTS BETWEEN DESIGNATED POINTS THE GRADE SHALL BE ESTABLISHED AS TO COMPARISON BY A STRAIGHT LINE DRAWN BETWEEN SAID DESIGNATED POINTS.
 ELEVATIONS ARE IN FEET ABOVE U.S.C. & G.S. MEAN SEA LEVEL DATUM OF 1929.
 THE BEARING AND THE DATA HEREON ARE HEREBY MADE A PART OF THE SPECIFICATIONS.
 WORK SHALL BE CONSTRUCTED ACCORDING TO SPECIFICATIONS ON FILE IN THE OFFICE OF THE COUNTY ENGINEER AND SHALL BE PROSECUTED ONLY IN THE PRESENCE OF THE COUNTY ENGINEER.
 BEFORE WORK CAN BE STARTED, THE CONTRACTOR MUST OBTAIN A PERMIT TO EXCAVATE IN COUNTY STREETS FROM THE L. A. COUNTY ROAD DEPT. FOR 200 FT. AND MAKE A DEPOSIT WITH THE COUNTY ENGINEER, ROOM 201 PAN AMERICAN BUILDING, 312 1/2 BROADWAY SUFFICIENT TO COVER THE COST OF CONSTRUCTION INSPECTION AND RECORD PLANS.
 APPROVAL OF THIS PLAN BY THE COUNTY OF LOS ANGELES DOES NOT CONSTITUTE A REPRESENTATION AS TO THE ACCURACY OF THE LOCATION OR THE EXISTENCE OR NON-EXISTENCE OF ANY UNDERGROUND utility PIPE, OR STRUCTURE WITHIN THE RIGHTS OF THIS PROJECT. THIS NOTE APPLIES TO ALL PAGES.
 IF WORK IS TO BE DONE IN A STATE HIGHWAY, A PERMIT MUST BE OBTAINED FROM THE STATE OF CALIFORNIA, DIVISION OF HIGHWAYS, 120 SOUTH SPRING STREET.

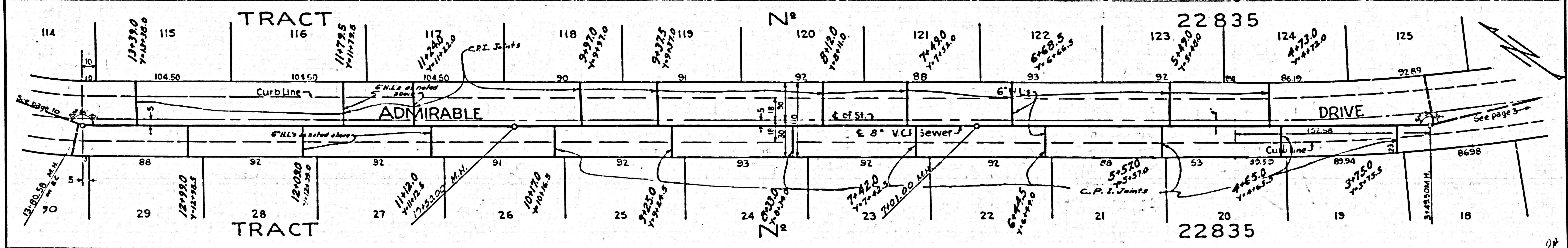
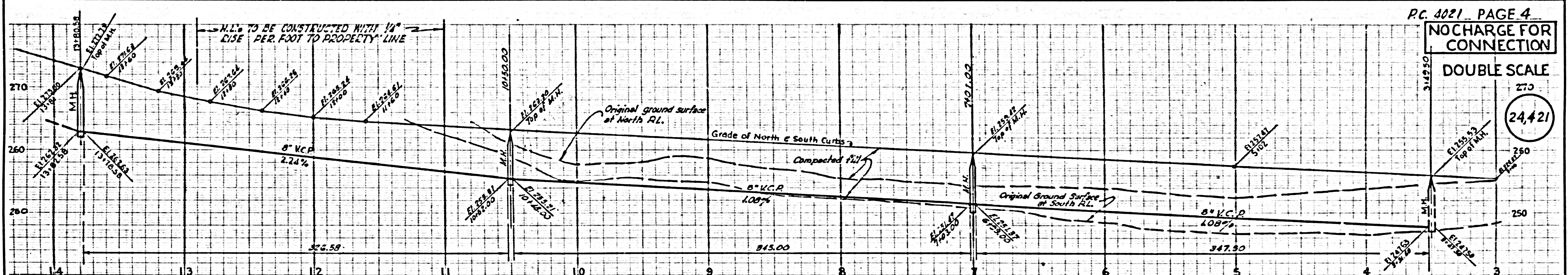
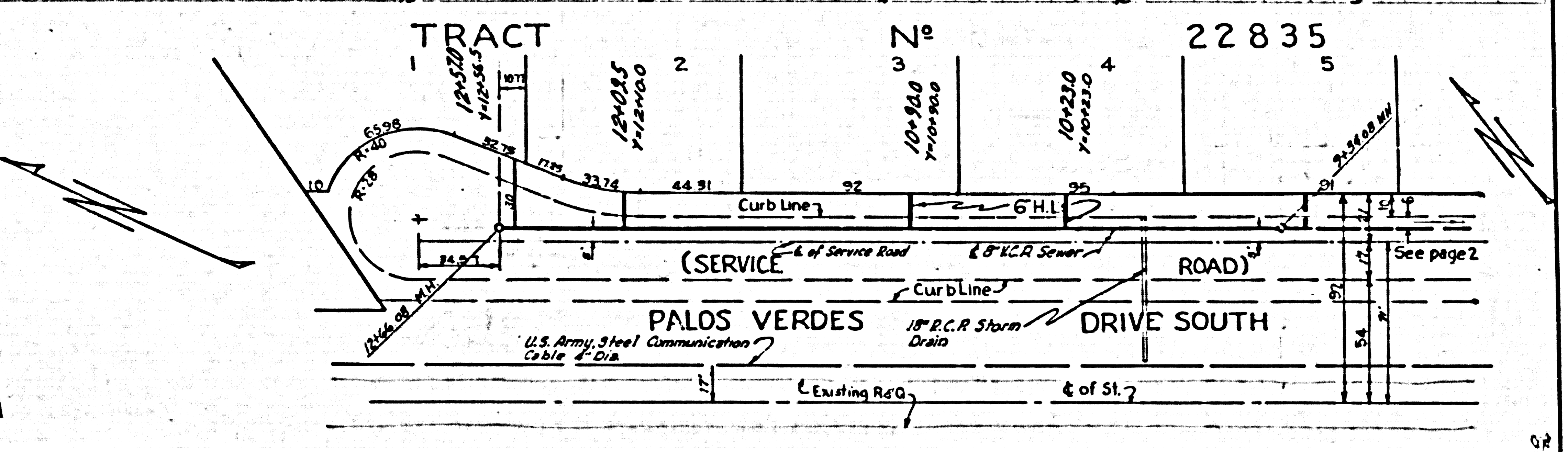
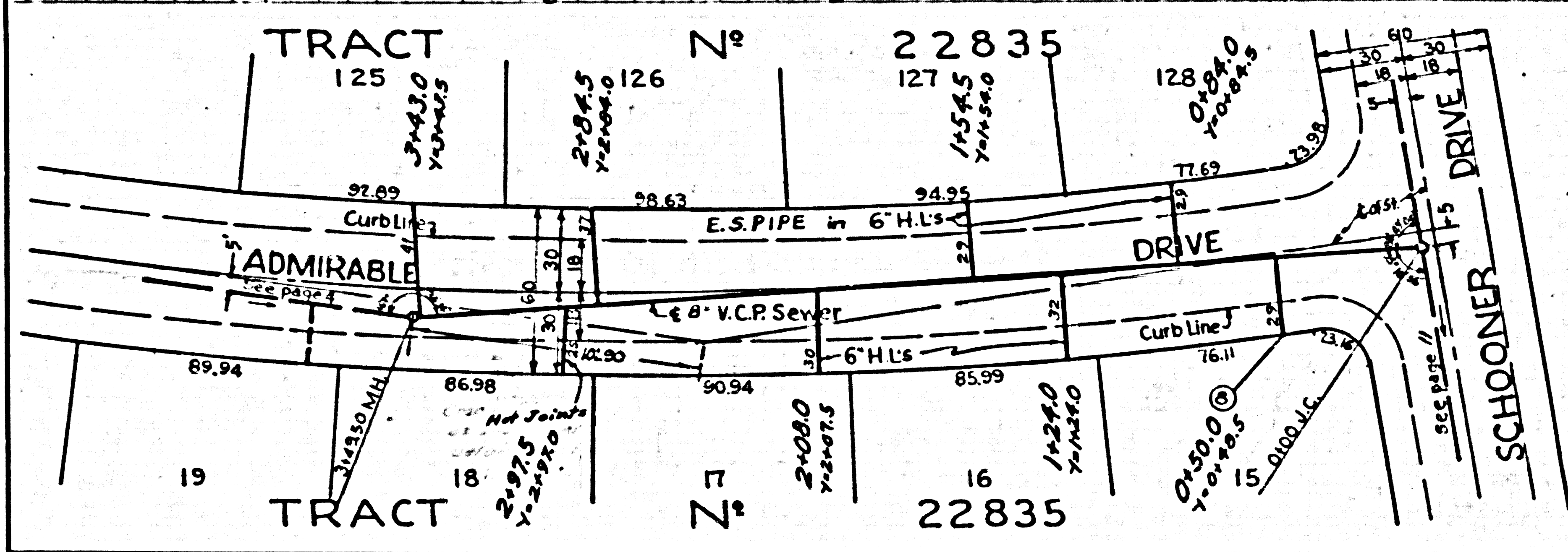
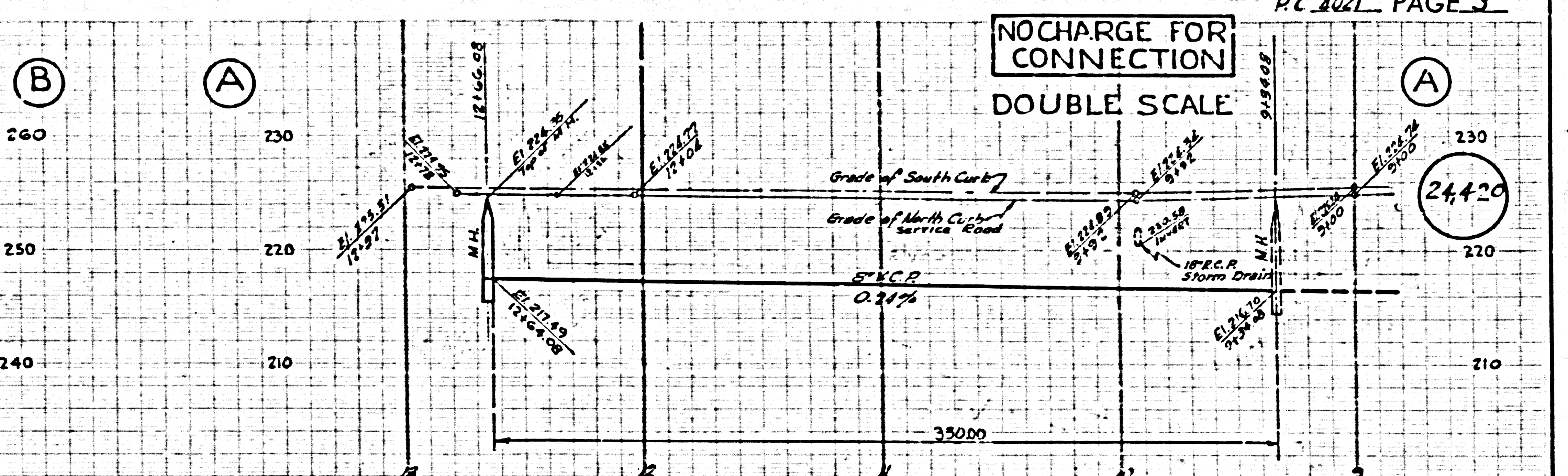
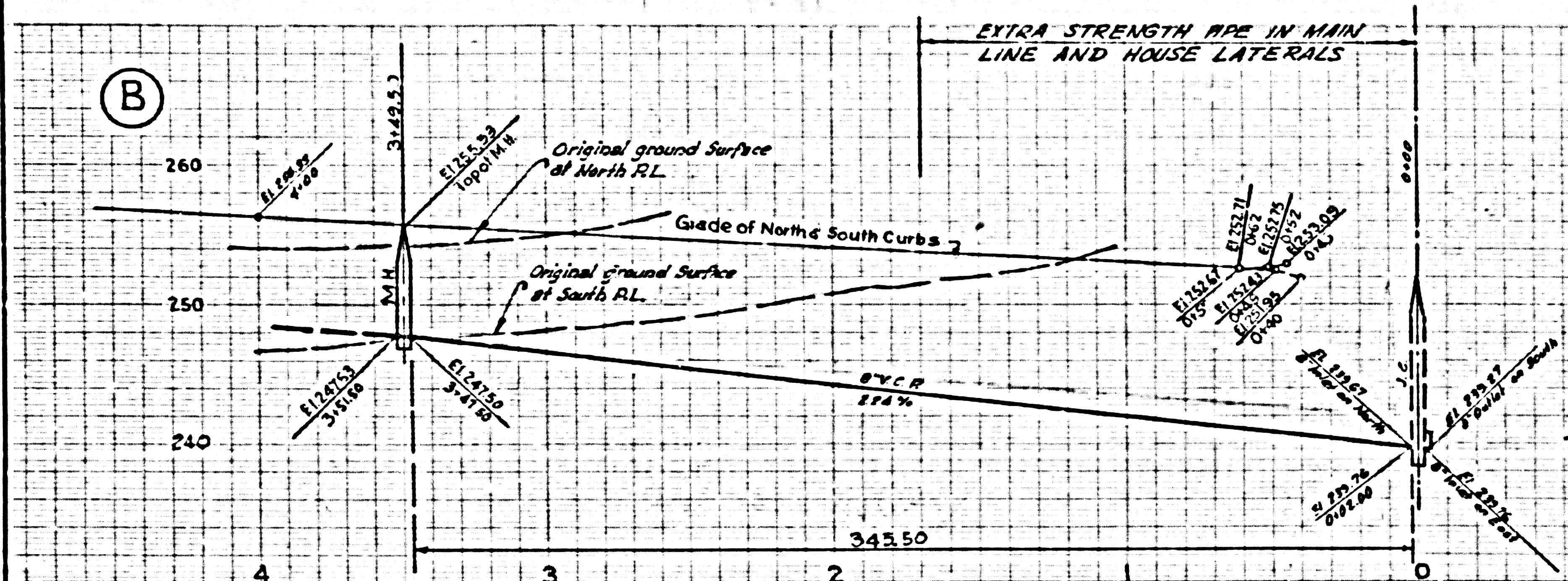
COUNTY OF LOS ANGELES, CALIFORNIA
 APPROVED, JOHN A. LAMBE, COUNTY ENGINEER
 APPROVED, A. M. RAWN, CHIEF ENGINEER
 BY J.P. Collins SANITATION ENGINEER
 BY J. P. Matthews OFFICE ENGINEER
 CHECKED BY J. P. Matthews 8-13-56
 OFFICE OF COUNTY ENGINEER, REG. C. E. NO. 7260



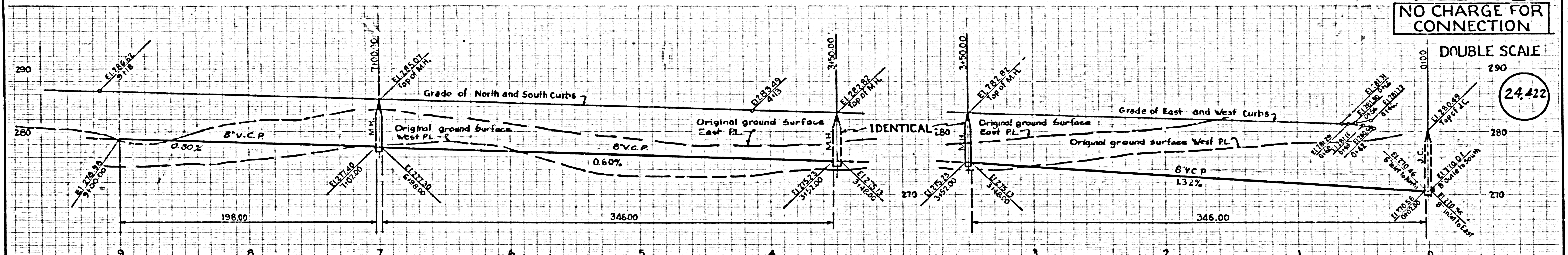
INDEX MAP
 Scale: 1" = 400'
 TRACT N° 22835
 P.C. 4021

Before breaking into any existing structure and before final acceptance of this work, County Sanitation District should be notified in order that required inspection may be made.

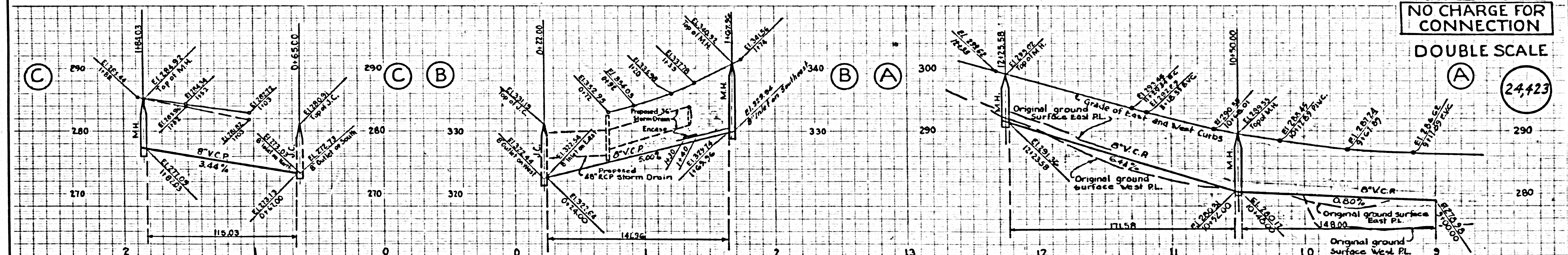
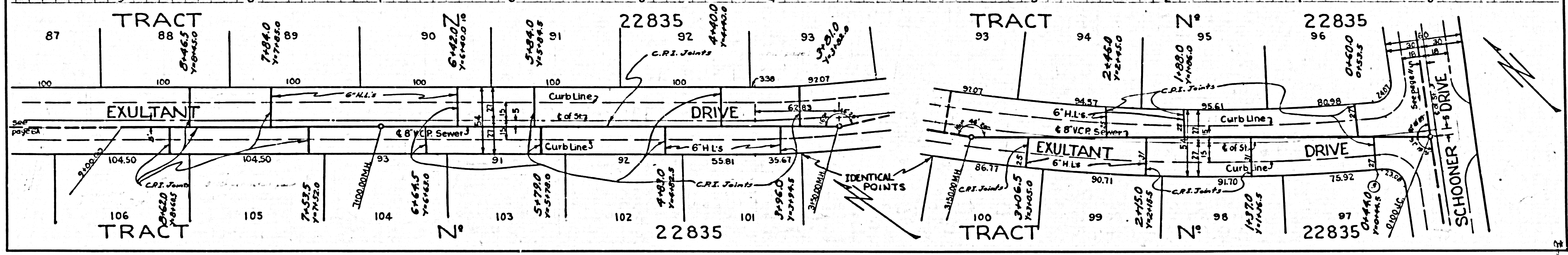




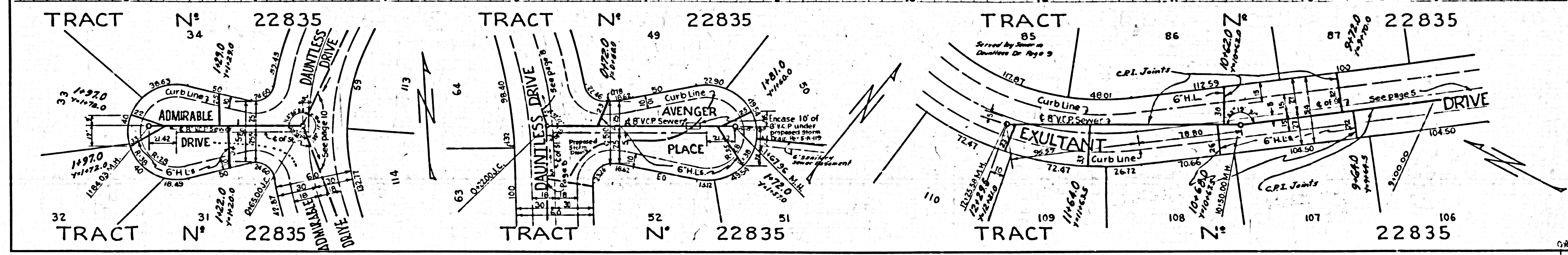
PC 402L



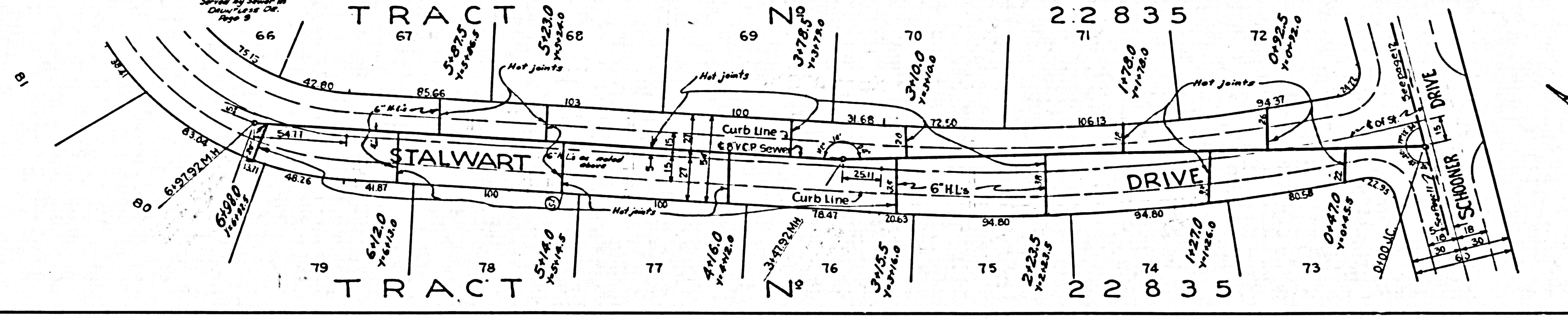
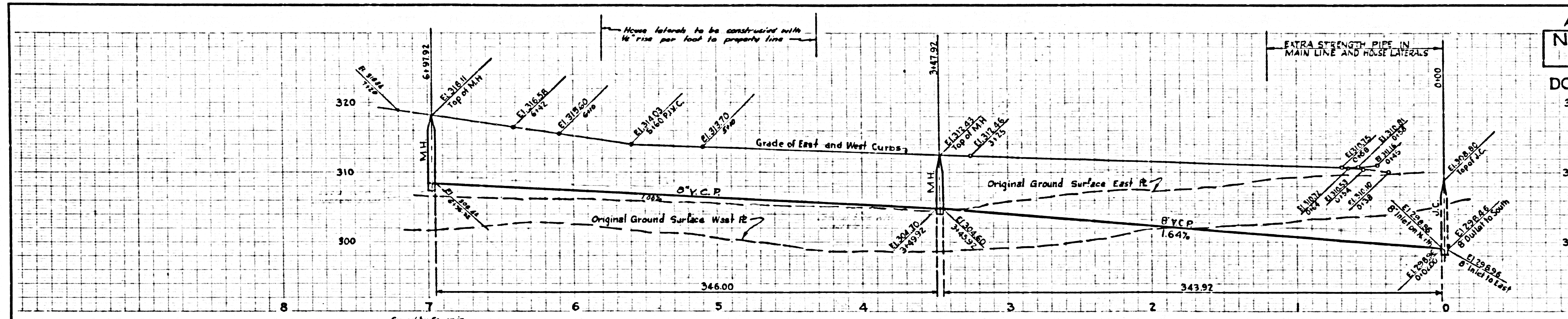
DOUBLE SCALE
24,422



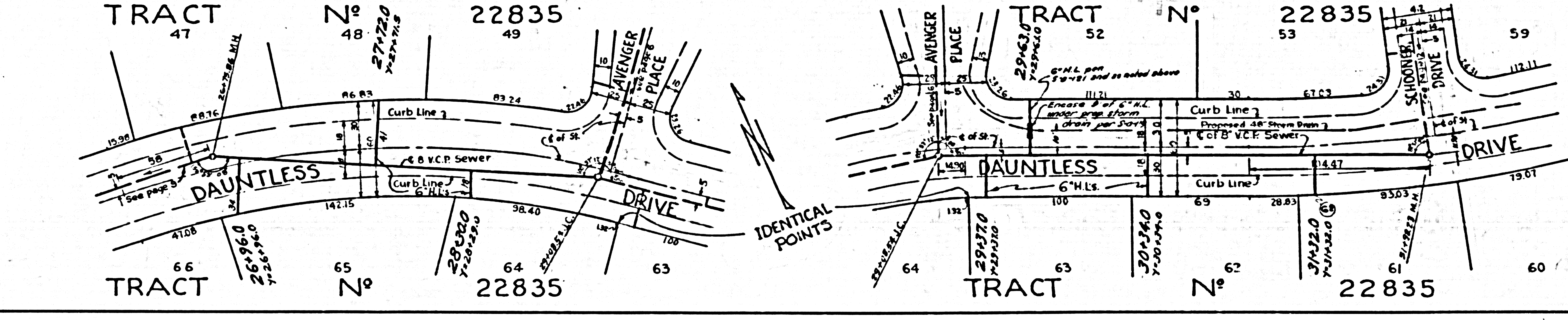
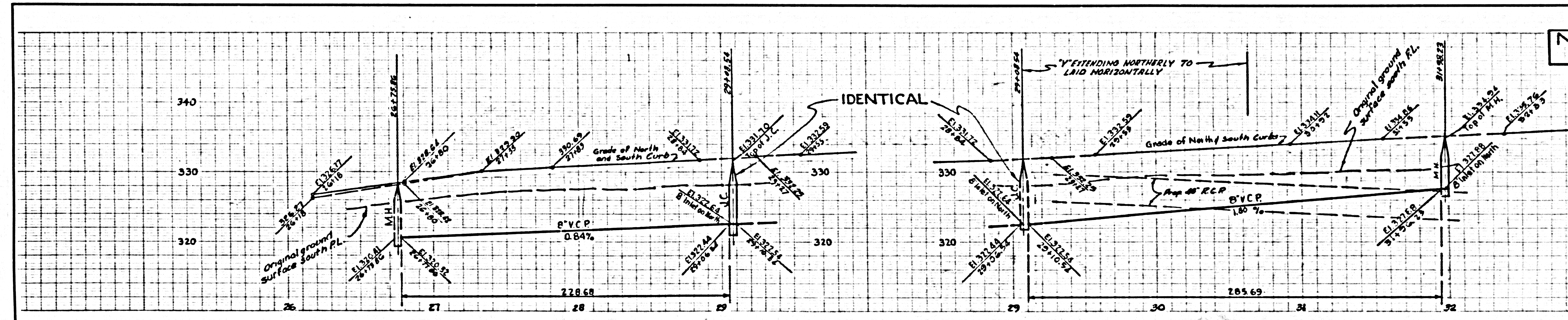
DOUBLE SCALE
24,423



DOUBLE SCALE
24,424

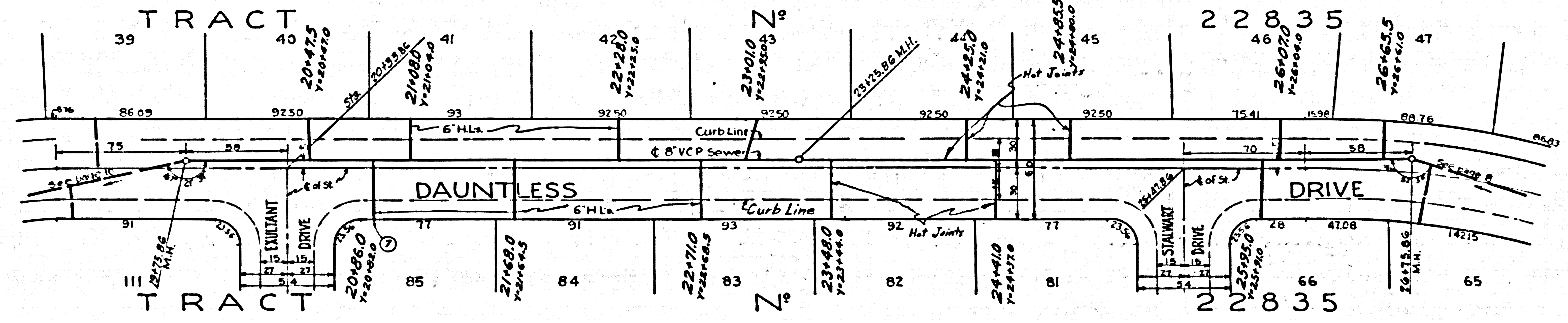
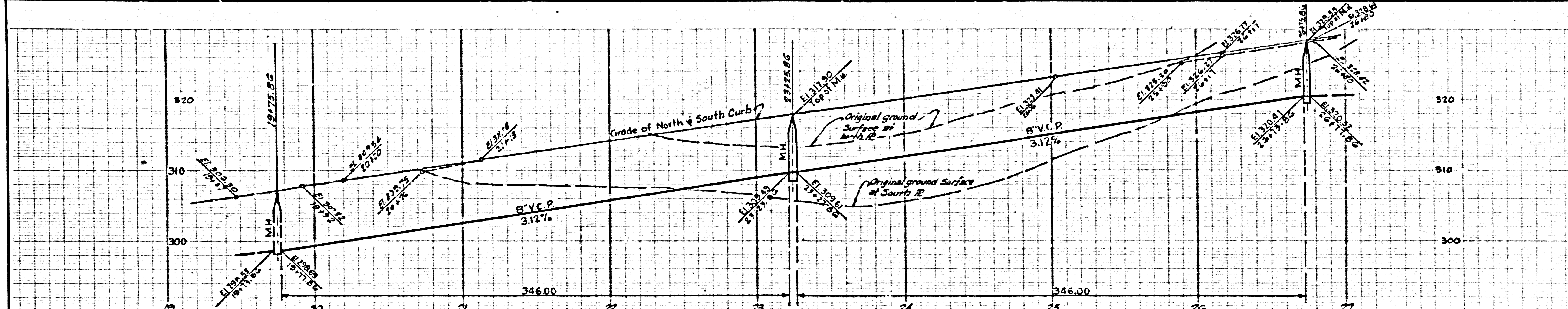


DOUBLE SCALE
24,425



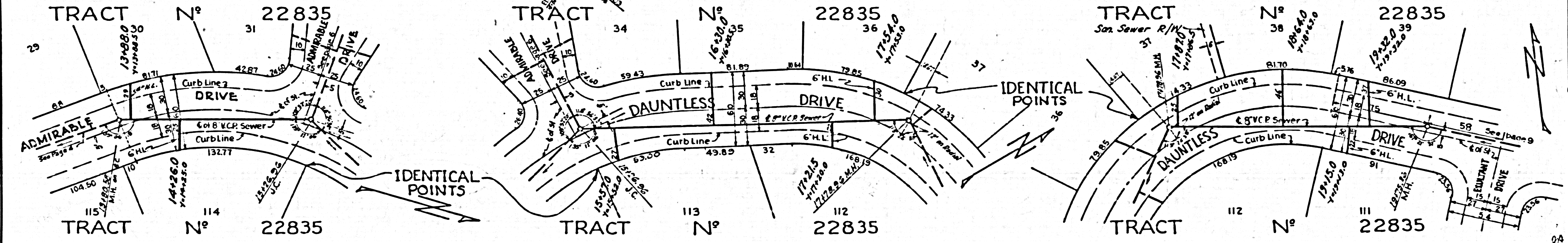
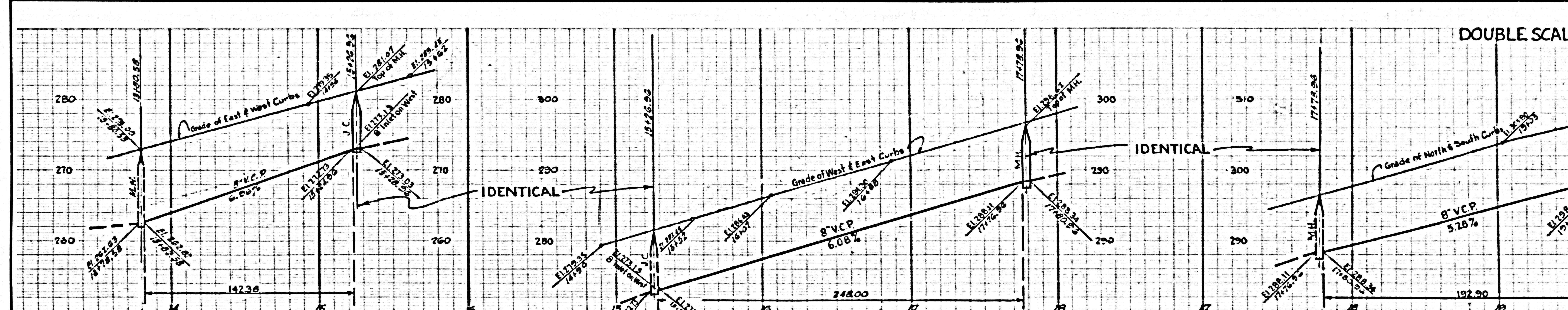
DOUBLE SCALE

24,426

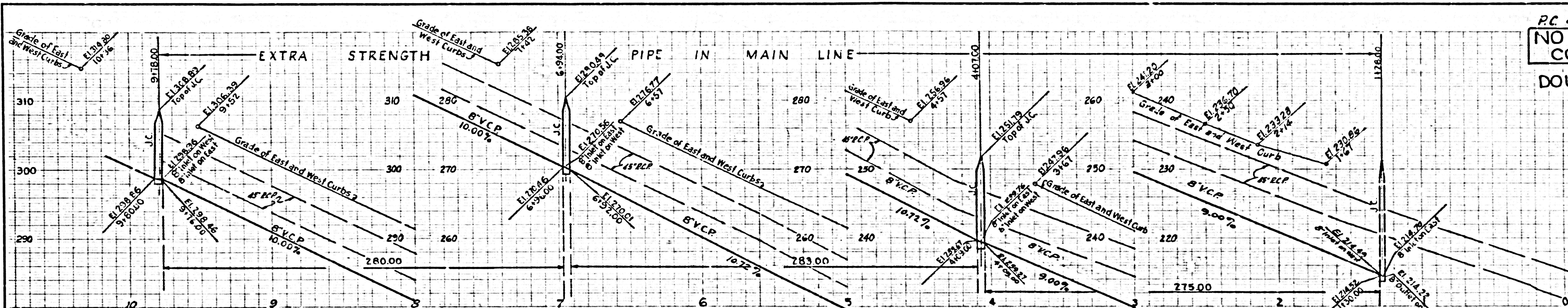


DOUBLE SCALE

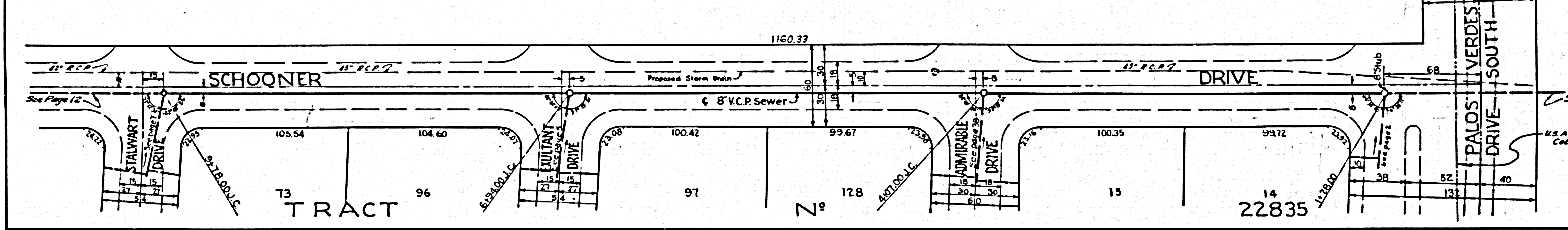
24,427



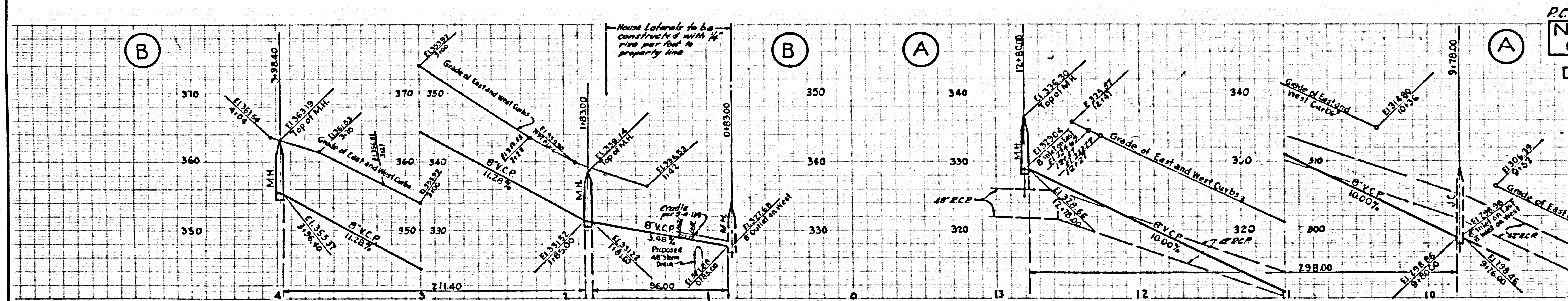
24,428



RANCHO PALOS VERDES
L.A.C.A. N° 51



24,429



RANCHO PALOS VERDES
L.A.C.A. N° 51

