

BM 34-14 (U.S. 4152 W 787)  
 About 3 mi W along 25th St. at  
 junction of 25th St & Gaffey St. at San Pedro. About 1 mi W along  
 So. Palos Verdes Dr. from the junction of 25th St. on the E. bank of  
 a ravine at the junction of a road leading to a ranch house 3/4  
 mi N. of the E. of Palos Verdes Dr. South. 16 ft. W of the E. of the  
 ranch road. I.P.F.N. of a white wooden witness post about  
 1 ft. higher than Palos Verdes Dr. South. A std. dis. stamped W 787-  
 1946 and set in the top of a concrete post 0.2 ft. above  
 ground - 1853 Adj. Elev. 23.4156 P. D. 1775, p. 19

L O M I T A B L D G . D I S T . N O . 7 . 1

PROFILE ALIGNMENT AND GRADE OF P.C. 4022  
 SANITARY SEWERS PAGE 1  
 TO BE CONSTRUCTED IN

TRACT N° 22387

PRIVATE CONTRACT NO. 4022

W.S. 27

6 SHEETS, 12 PAGES

24,364

SCALE: VERT. 1" = 4' HORIZ. 1" = 40'

MARCH, 1956

PREPARED IN THE OFFICES OF

H.R. LOVETT & ASSOCIATES, INC.

By J.A. Montgomery REG. C.E. NO. 9152

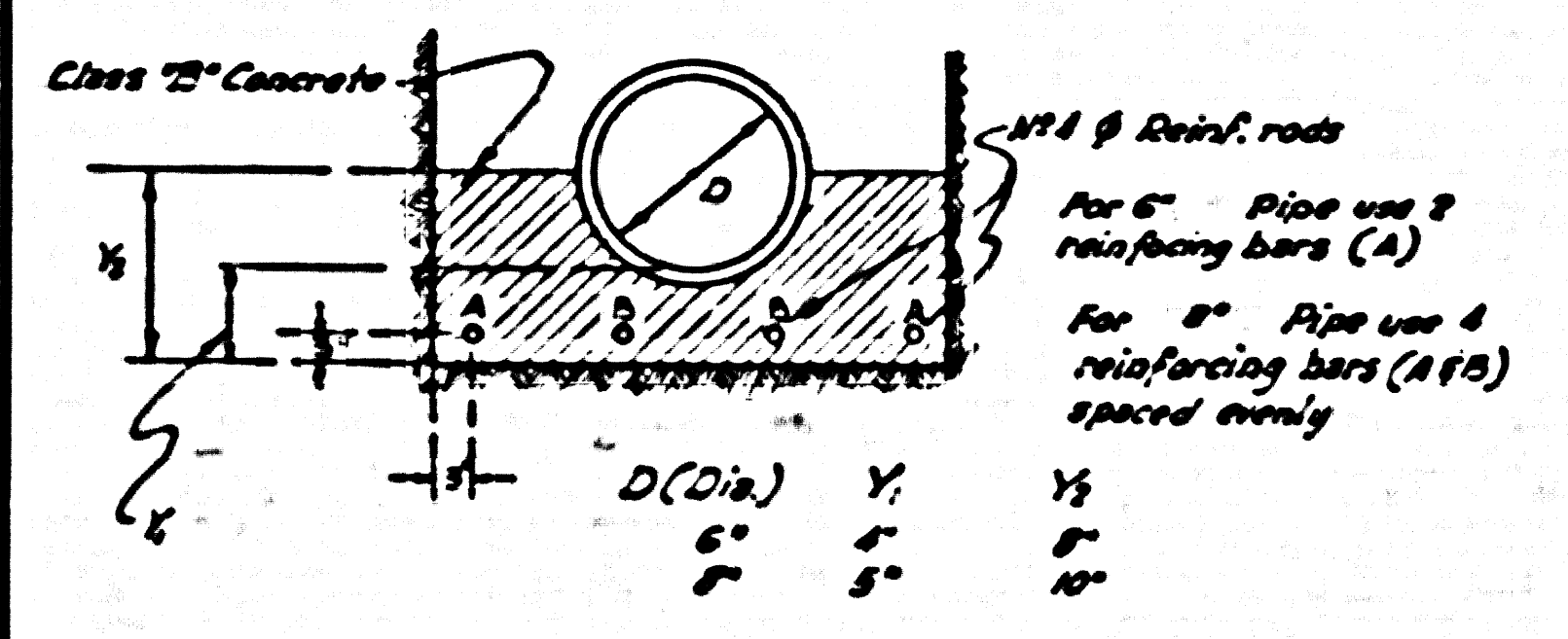
FOR LEGEND SEE PLAN NO. S-A-64

- NOTES
- PROVIDE STAKES ON THE PROPERTY LINE OR PROPERTY LINES PRODUCED AT RIGHT ANGLES TO THE SEWER LINE AT THE CENTER LINE OF EACH MANHOLE.
  - NO REPRESENTATIVE OF THE COUNTY ENGINEER WILL SURVEY OR LAYOUT ANY PORTION OF THE WORK.
  - THE OWNER OR THE AUTHORIZED REPRESENTATIVE SHALL FURNISH THE COUNTY ENGINEER WITH GRADE SHEETS AND STATIONING FOR ALL HOUSE LATERALS AND HOUSE LATERALS AND SHALL PROVIDE STAKES FOR THEM AT THEIR PROPER LOCATIONS WITH STATIONING PLAINLY MARKED. ANY CHANGE IN LOCATION SHALL BE INDICATED BY WRITING BY THE OWNER OR HIS REPRESENTATIVE.
  - NO REVISIONS SHALL BE MADE IN THESE PLANS WITHOUT THE APPROVAL OF THE COUNTY ENGINEER.
  - USE STANDARD MANHOLE FRAMES AND COVERS, S.A-117, EXCEPT AS NOTED.
  - USE STANDARD STRENGTH PIPE EXCEPT AS NOTED.
  - USE CEMENT MORTAR FOR ALL WITHEDED CLAY PIPE JOINTS.
  - RESURFACE ALL DRIVEWAYS WITHIN PAVED AREA TO MEET L.A. COUNTY ROAD DEPT. OR CALIF. STATE HIGHWAY DEPT. SPECIFICATIONS IN ACCORDANCE WITH PERMITS.
  - SHOULDER FOUR FEET OF SEWER AT POINTS OF INTERFERENCE WITH POLES, S.A-119.
  - HOUSE LATERALS TO BE CONSTRUCTED WITH INVERTS AT PROPERTY LINE 6 FEET BELOW CURB GRADE EXCEPT AS NOTED.
  - FOR STRUCTURES EXCEPT THIS USE FORMULA NO. 1 SPEC. SEC. 8A.
  - FIGURES IN CIRCLES AT END OF HOUSE LATERALS INDICATE BATH ROOM CURB GRADE AT PROPERTY LINE.
  - THE SEWER SHALL BE 18" DIA. UNLESS OTHERWISE INDICATED BY THE CONTRACTOR.
  - THE TOP OF CURB ELEVATION FOR EACH HOUSE LATERAL, ON THE GRADE SHEET.
  - (A) NO CONSTRUCTION SHALL BE PERMITTED IN FILLED AREAS UNLESS ACCEPTABLE CERTIFICATION IS SUBMITTED TO THE CONSTRUCTION DIVISION OF THE COUNTY ENGINEER'S DEPARTMENT THAT CONSTRUCTION IS GREATER THAN 80%.
  - (B) IF CONSTRUCTION IS LESS THAN 80%, THE SEWER MUST BE CRADLED AS SHOWN ON THE PLANS.
  - (C) IF CONSTRUCTION IS GREATER THAN 80% CRADLING IS NOT REQUIRED. HOWEVER, JOINT COMPOUND MUST BE SUBSTITUTED FOR CEMENT MORTAR FOR ALL JOINTS IN FILLED AREAS.

SHEET NO.	PAGES
1	142
2	364
3	566
4	768
5	970
6	1172

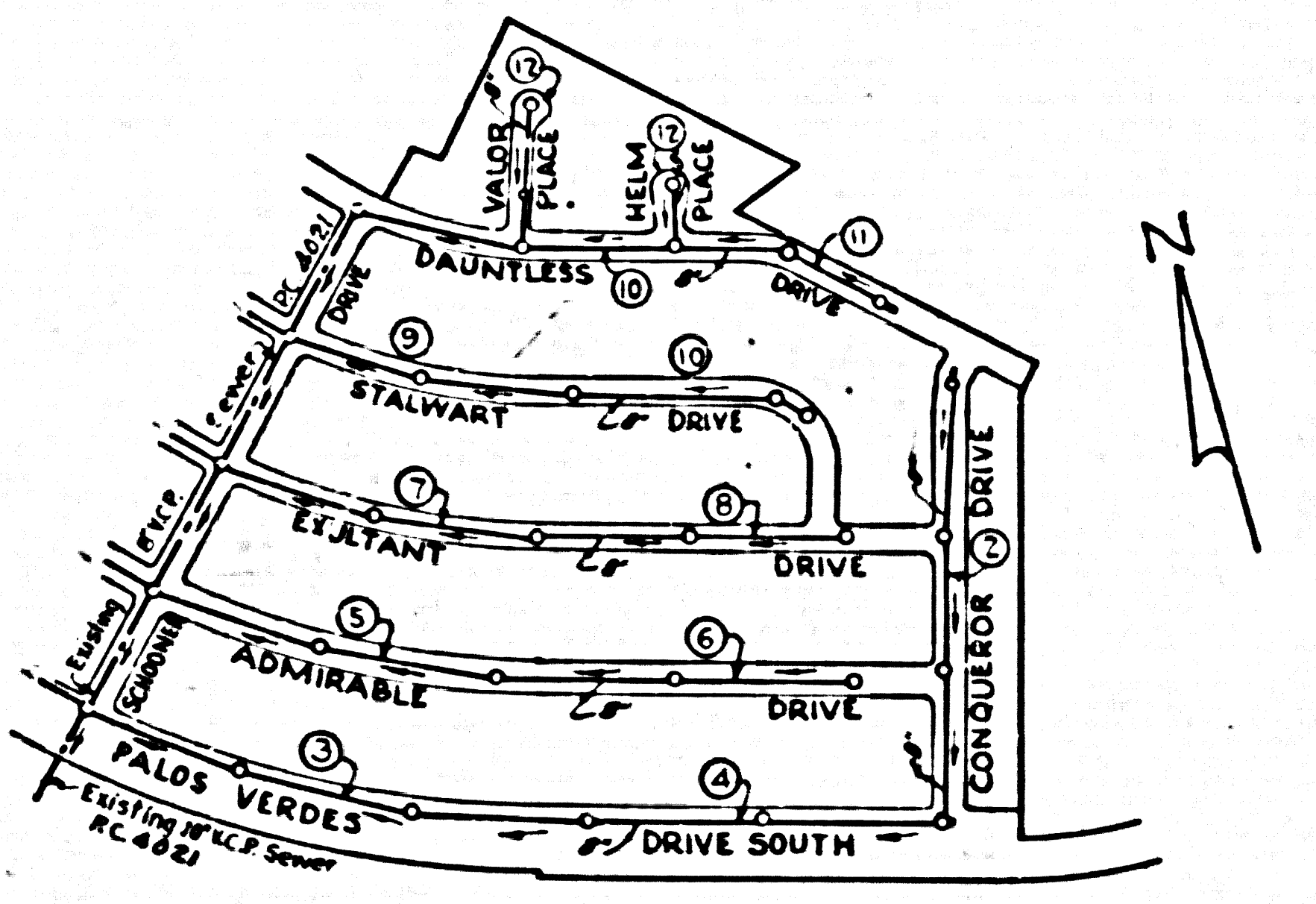
COLLECTION CHARGES AS INDICATED IN 7-77 Revised 8-13-56

DETAIL

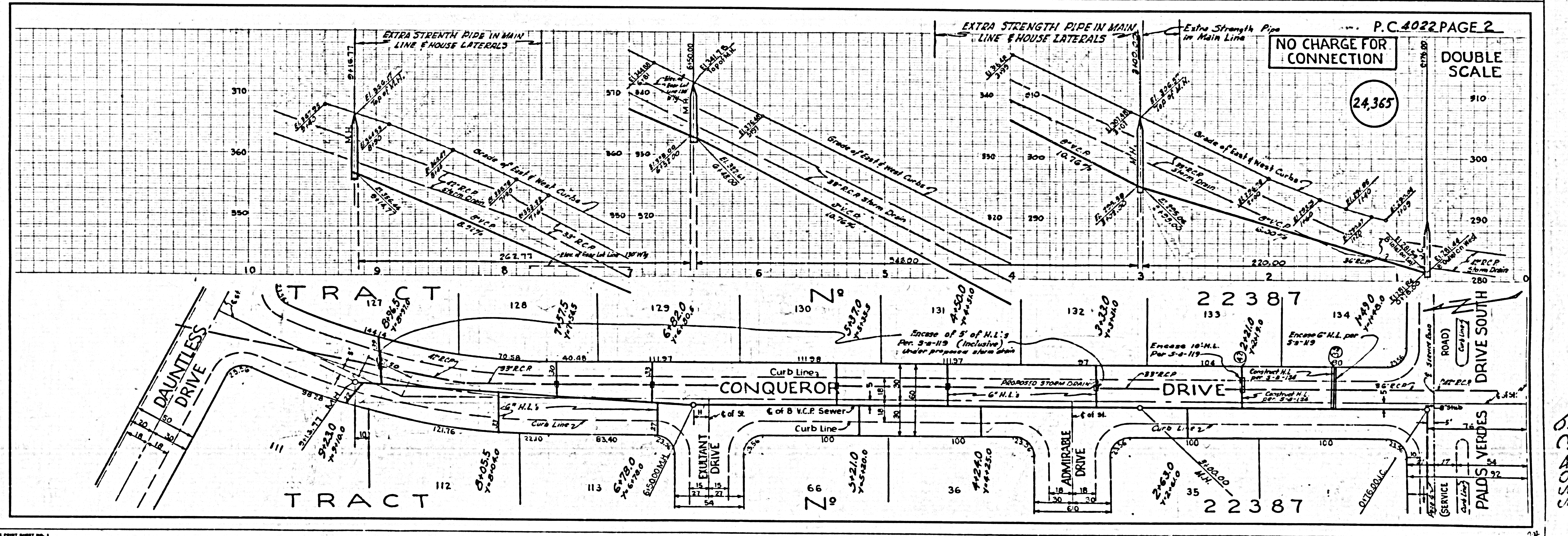


SPECIAL CRADLE FOR SEWERS IN FILLED AREAS

NOTE: ALL CRADLING TO BE IN ACCORDANCE WITH S-A-166



INDEX MAP Scale 1" = 400' TRACT N° 22387 P.C. 4022



NO CHARGE FOR CONNECTION

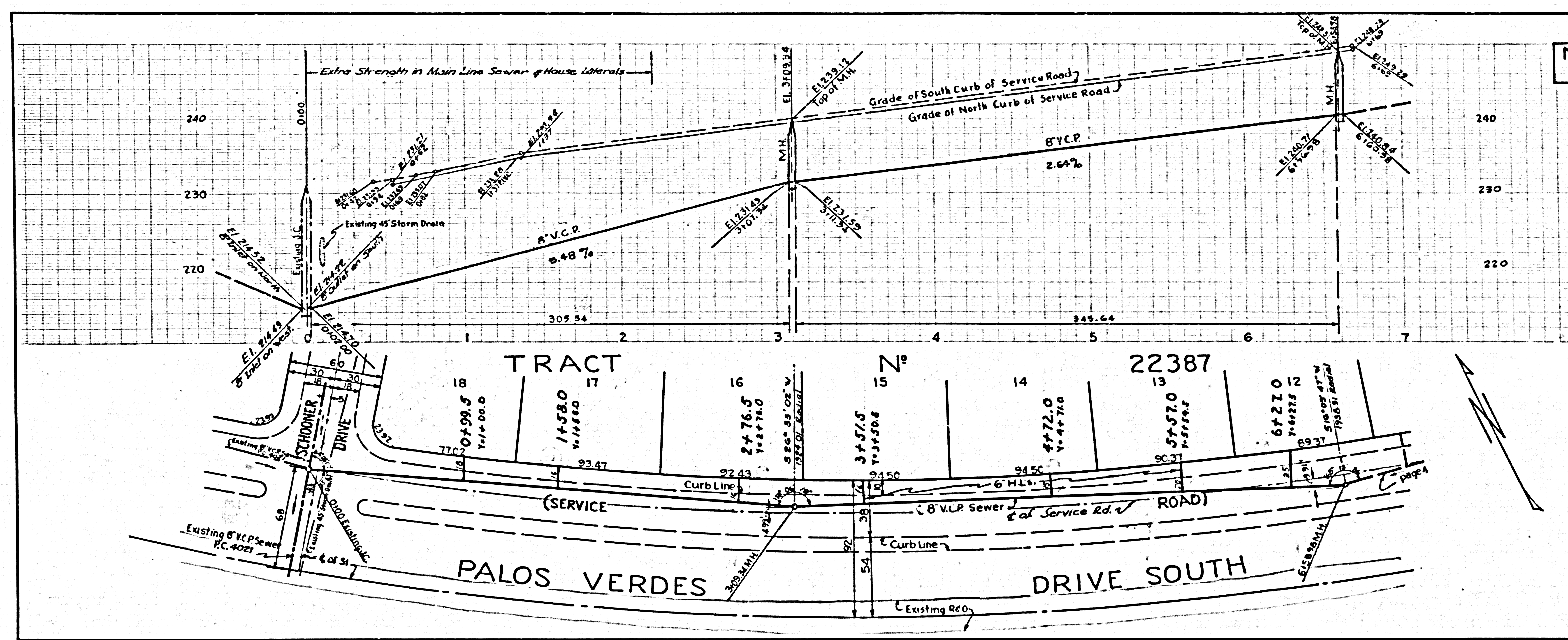
24,365

DOUBLE SCALE

P.C. 4022 PAGE 2

P.C. 4022

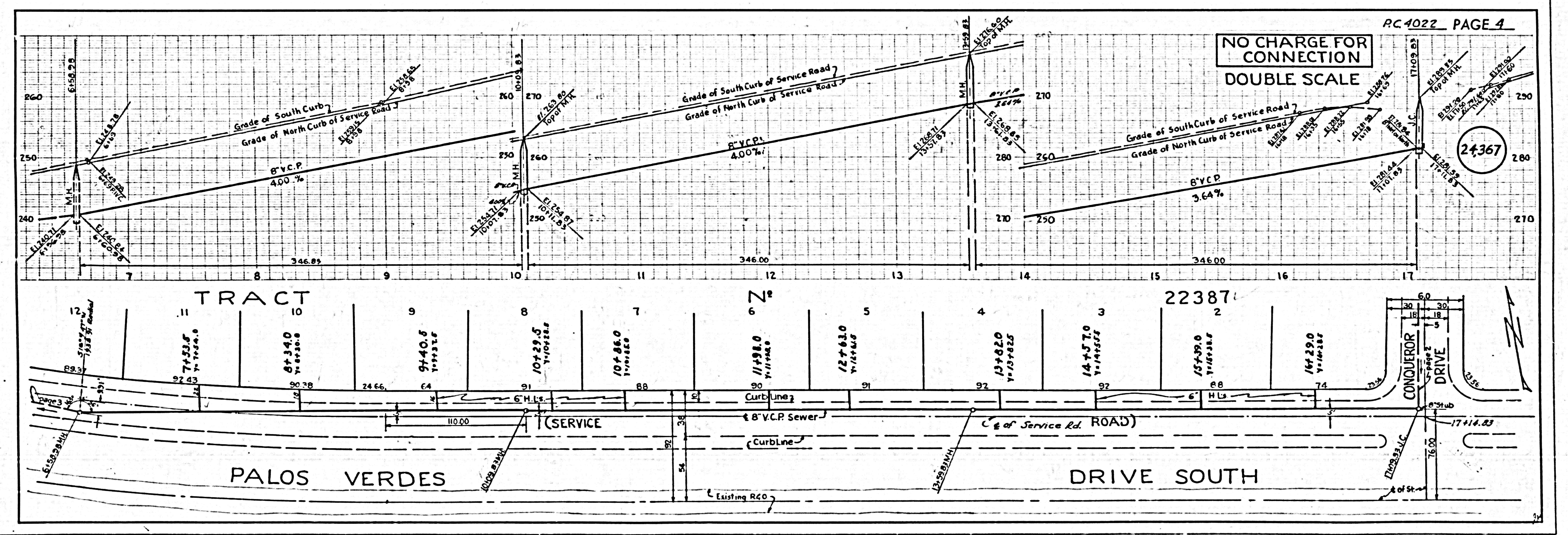




NO CHARGE FOR CONNECTION

DOUBLE SCALE

24366

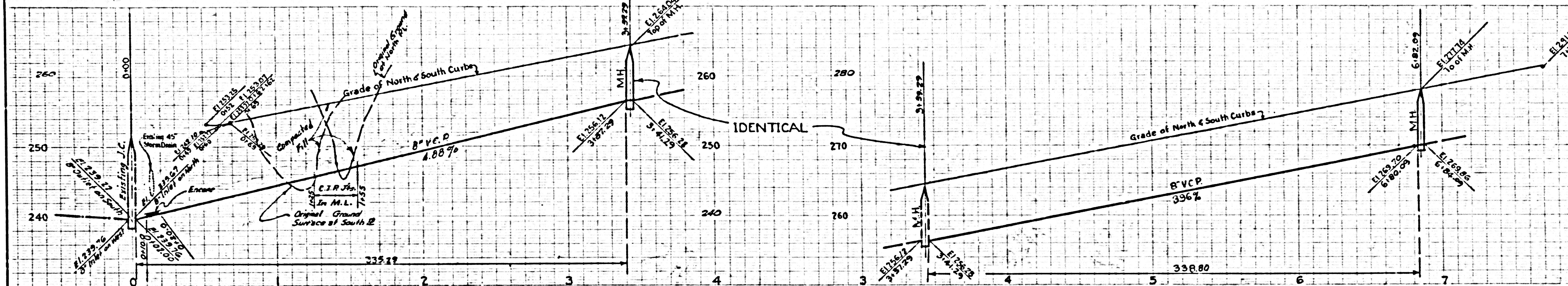


NO CHARGE FOR CONNECTION

DOUBLE SCALE

24367

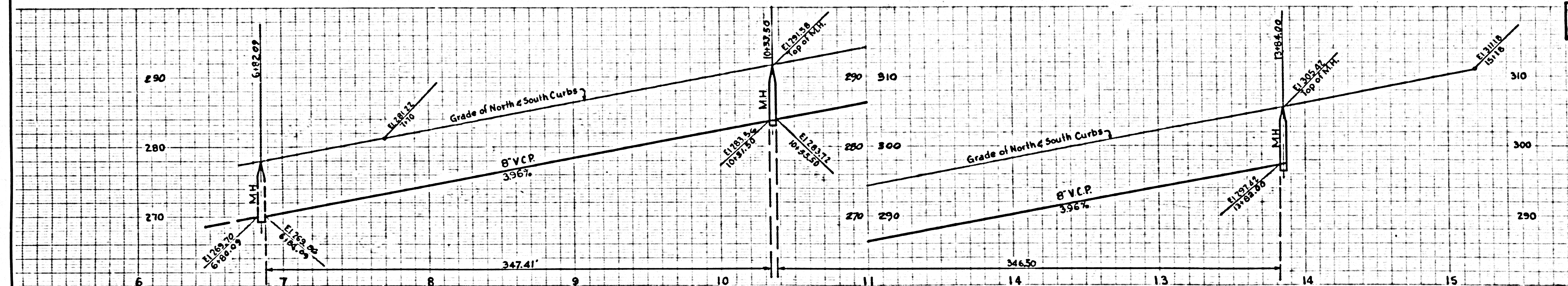
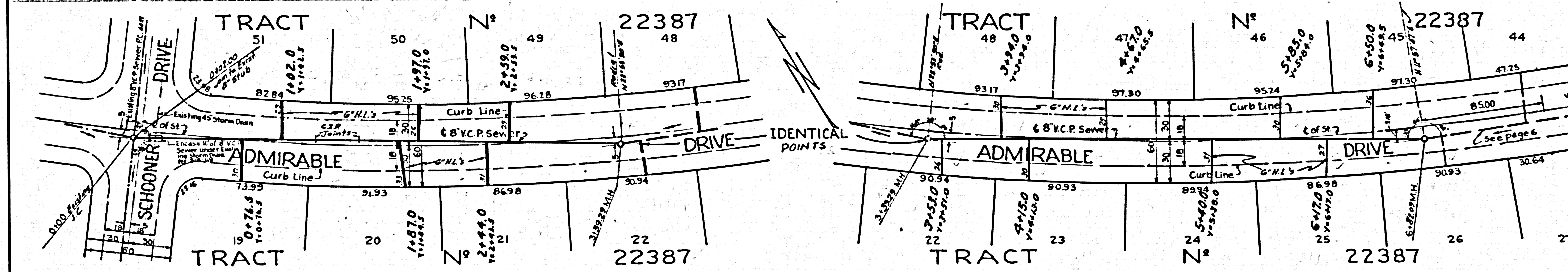




NO CHARGE FOR CONNECTION

DOUBLE SCALE

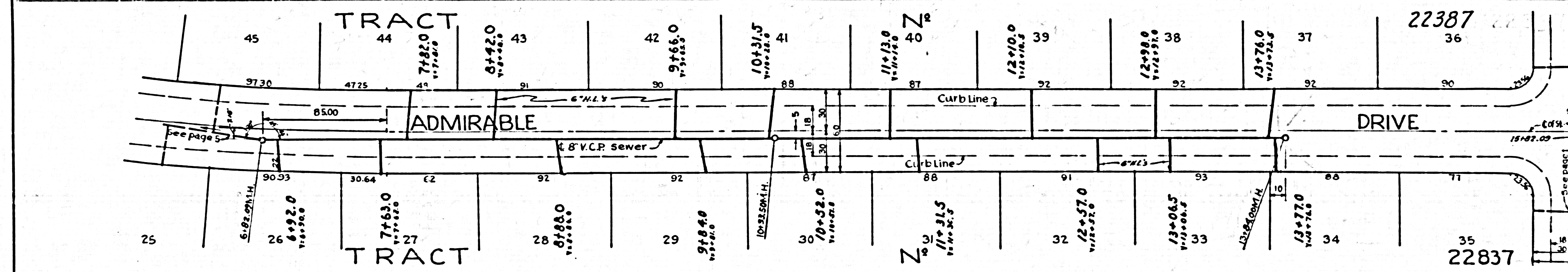
24368



NO CHARGE FOR CONNECTION

DOUBLE SCALE

24369

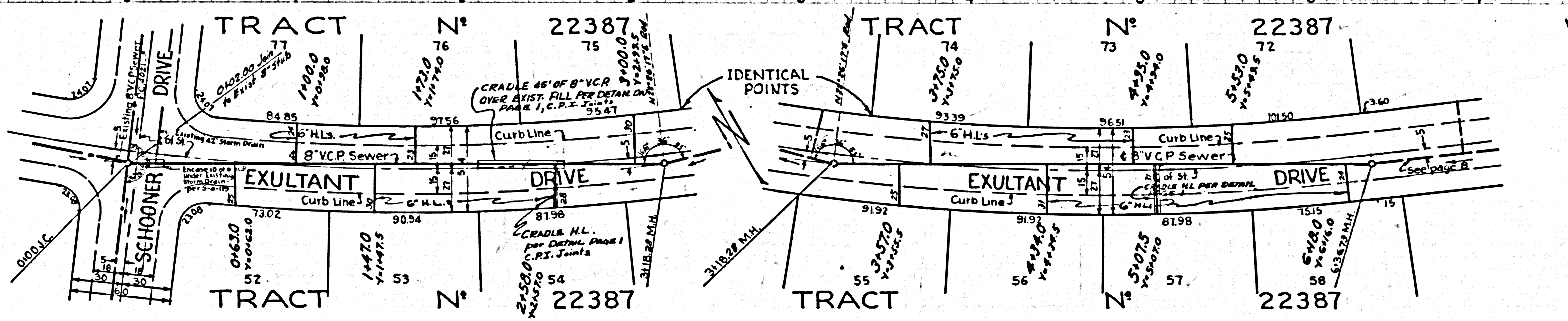
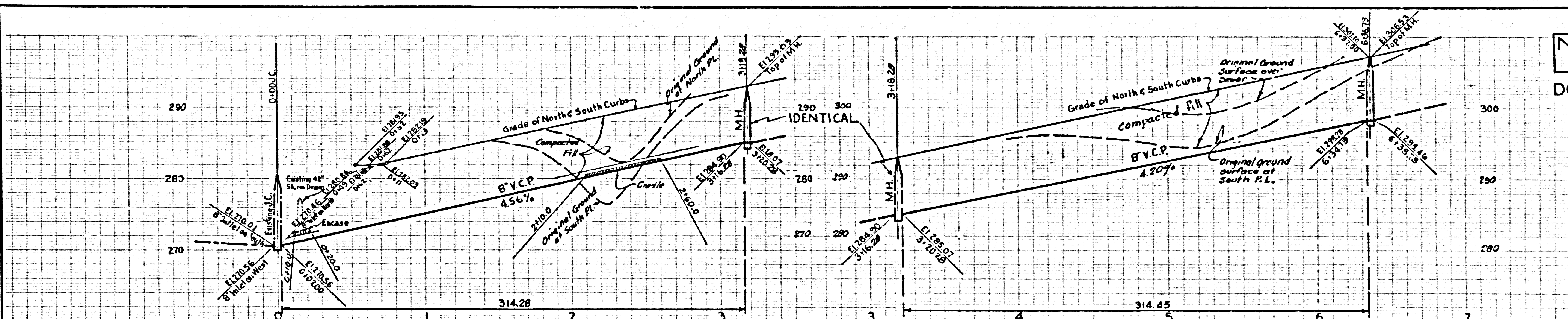




NO CHARGE FOR CONNECTION

DOUBLE SCALE

24370



NO CHARGE FOR CONNECTION

DOUBLE SCALE

24371

