

PUENTE BLDG. DIST. NO. 2

PROFILE ALIGNMENT AND GRADE OF **P.C. 4025**
SANITARY SEWERS PAGE **1**
 TO BE CONSTRUCTED IN
ALLEY SOUTH OF GARVEY AVENUE (23051)

PRIVATE CONTRACT NO. 4025

W.S. 37

1 SHEETS, 2 PAGES
 SCALE: VERT. 1" = 4' HORIZ. 1" = 40' MAY, 1956

PREPARED IN THE OFFICES OF
A. RICHARD BROWN, JR. REGISTERED CIVIL ENGINEER
 1632 COMMONWEALTH AVENUE
 BUENA VISTA, CALIF. IN LICENSE 8-4352
 BY **A. Richard Brown, Jr.** REG. C. E. NO. 3982

FOR LEGEND SEE PLAN NO. S-A-64

NOTES
 GRADES TO WHICH THIS IMPROVEMENT IS TO BE CONSTRUCTED ARE SHOWN ON PLANS AND NUMBERED GRADE POINTS FOR TOP OF CURB, CENTER LINE OF STREETS, OR CENTER LINE OF ALLEYS ARE SHOWN BY CIRCLES ON PROFILES AT ALL POINTS BETWEEN DESIGNATED POINTS THE GRADE SHALL BE ESTABLISHED SO AS TO COMFORM TO A STRAIGHT LINE DRAWN BETWEEN SAID DESIGNATED POINTS.
 ELEVATIONS ARE IN FEET ABOVE U.S.C. & G.S. MEAN SEA LEVEL, DATUM OF 1929.
 THIS DRAWING AND THE DATA HEREON ARE HEREBY MADE A PART OF THE SPECIFICATIONS.
 WORK SHALL BE CONSTRUCTED ACCORDING TO SPECIFICATIONS ON FILE IN THE OFFICE OF THE COUNTY ENGINEER AND SHALL BE INSPECTED ONLY IN THE PRESENCE OF THE COUNTY ENGINEER.
 BEFORE WORK CAN BE STARTED, THE CONTRACTOR MUST OBTAIN A PERMIT TO EXCAVATE IN COUNTY STREETS FROM THE COUNTY ROAD DEPT., 150 W. 5TH ST. AND MAKE A DEPOSIT WITH THE COUNTY ENGINEER, ROOM 304 FARM ANCHORAGE BUILDING, 315 SO. BROADWAY, SUFFICIENT TO COVER THE COST OF CONSTRUCTION INSPECTION AND RECORD PLANS.
 APPROVAL OF THIS PLAN BY THE COUNTY OF LOS ANGELES DOES NOT CONSTITUTE A REPRESENTATION AS TO THE ACCURACY OF THE LOCATION OR THE EXISTENCE OR NON-EXISTENCE OF ANY UNDERGROUND UTILITY PIPE, OR STRUCTURE WITHIN THE LIMITS OF THIS PROJECT. THIS NOTE APPLIES TO ALL PAGES.
 IF WORK IS TO BE DONE IN A STATE HIGHWAY, A PERMIT MUST BE OBTAINED FROM THE STATE OF CALIFORNIA, DIVISION OF HIGHWAYS, 118 SOUTH SPRING STREET.

COUNTY OF LOS ANGELES, CALIFORNIA

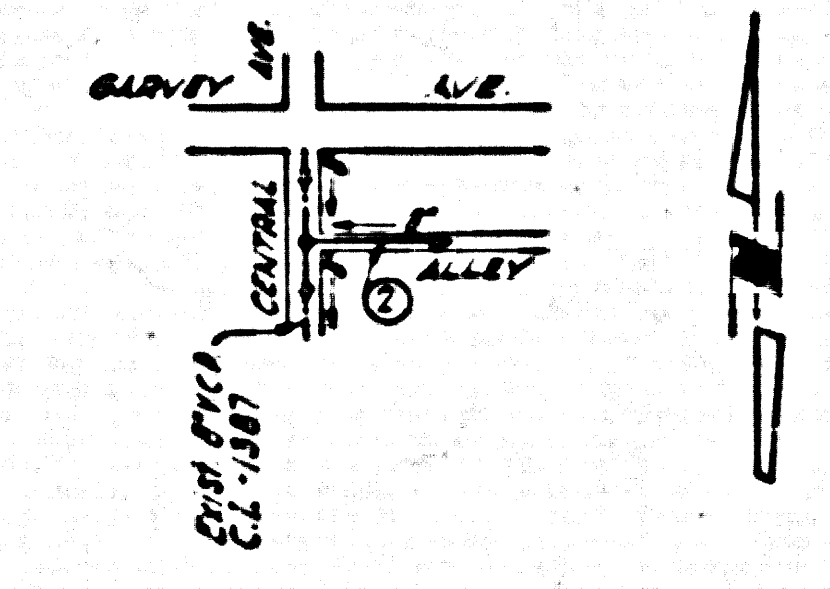
APPROVED, JOHN A. LAMBE, COUNTY ENGINEER
 APPROVED, A. M. RAWLIN, CHIEF ENGINEER
 BY **A. H. Hughes** (S.E. Sanitation Engineer) BY **S. P. Pennington** (S.E. Sanitation Engineer)
 CHECKED BY **S.K. Onda** OFFICE OF COUNTY ENGINEER, REG. C. E. NO. 3406

REVISED MAIN LOCATION
 APPROVED: **S.K. Onda 4-16-56**
 OFFICE OF COUNTY ENGINEER, REG. C. E. NO. 3406

BENCH MARK NO. 12-7
 Sta. Co. Surv. Map marked 12-7 1952 R.E.G.3 set in conc. 14" below T.C. - Near the Int. of Garvey Ave. & Central Ave. 39.6' S. of the E. of Garvey Ave. 6' 179.5' East of the E. of Central to the South, 1.6' South of the curb in a well set in concrete flush with the T.C. with C.I. cover marked "C. S. Mon." P.B. 1379-11 1952 Adj. ELEV. 262.808

NO CHARGE FOR CONNECTIONS
 L. Lester 6-6-56

- NOTES
- PROVIDE STAKES ON THE PROPERTY MAP OR PROPERTY LINES PRODUCED AT RIGHT ANGLES TO THE SEWER LINE AT THE CENTER LINE OF EACH MANHOLE.
 - NO REPRESENTATIVE OF THE COUNTY ENGINEER WILL SURVEY OR LAYOUT ANY PORTION OF THE WORK.
 - THE OWNER OR HIS AUTHORIZED REPRESENTATIVE SHALL FURNISH THE COUNTY ENGINEER WITH GRADE SHEETS AND STATION FOR ALL HOUSE LATERALS AND Y BRANCHES AND SHALL PROVIDE STAKES FOR THEM AT THEIR PROPER LOCATIONS WITH STATION AND PLAINLY MARKED. ANY CHANGE IN LOCATION SHALL BE REQUESTED BY WRITING BY THE OWNER OR HIS REPRESENTATIVE.
 - NO REVISIONS SHALL BE MADE IN THESE PLANS WITHOUT THE APPROVAL OF THE COUNTY ENGINEER.
 - USE STANDARD MANHOLE FRAMES AND COVERS, S.A. 117, EXCEPT AS NOTED.
 - USE STANDARD STRENGTH PIPE EXCEPT AS NOTED.
 - USE CEMENT MORTAR FOR ALL VITRIFIED CLAY PIPE JOINTS.
 - REFURFACE ALL TRENCH WITHIN PAVED AREA TO MEET L. & COUNTY ROAD DEPT., OR CALIF. STATE HIGHWAY DEPT. SPECIFICATIONS IN ACCORDANCE WITH PROFILES.
 - INDICATE FOUR FEET OF SEWER AT POINTS OF INTERFERENCE WITH POLES, S.A. 117.
 - HOUSE LATERALS TO BE CONSTRUCTED WITH 1/4" RISE PER FOOT TO PROPERTY LINE.
 - ALL STRUCTURES SHALL BE MADE BY THE STRUCTURAL S.A. 164, EXCEPT AS NOTED.
 - FOR ALLOWABLE LEAKAGE TEST USE FORMULA NO. 1001, SPEC. SEC. 31.
 - THE PRIVATE ENGINEER IS TO FURNISH THE HOUSE LATERAL DEPTH AT THE PROPERTY LINE BELOW THE GRADE OF THE E. OF ALLEY, FOR EACH HOUSE LATERAL ON THE GRADE SHEET.



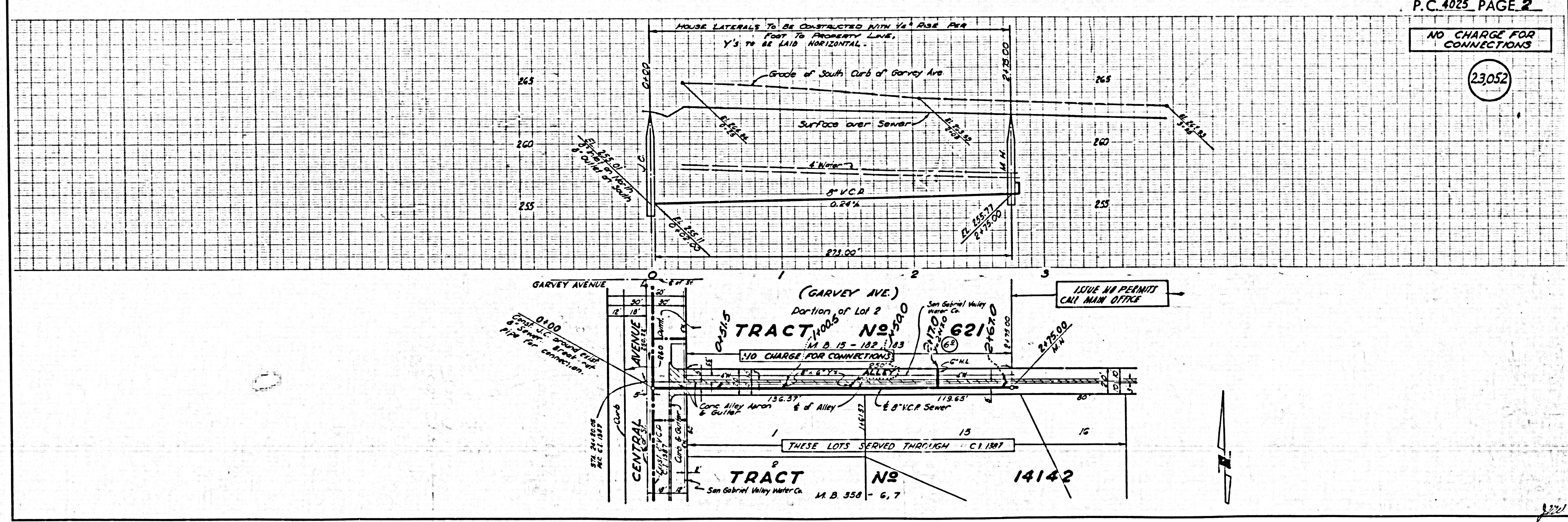
INDEX MAP
 SCALE: 1" = 600'
 P.C. 4025

APPROVED: **Edward G. Onda**
 INDUSTRIAL WASTE DIVISION

checked 7-13-56 **McLaren**

P.C. 4025 PAGE 2

NO CHARGE FOR CONNECTIONS (23052)



P.C. 4025