

WHITTIER BLDG. DIST. NO. 11

PROFILE ALIGNMENT AND GRADE OF **P.C. 4030**
SANITARY SEWERS PAGE **1**
 TO BE CONSTRUCTED IN

TRACT N° 21767 (23,504)

PRIVATE CONTRACT NO. 4030

W.S. 34

2 SHEETS, 3 PAGES

SCALE: VERT. 1" = 4' HORIZ. 1" = 40' **MAY, 1956**

PREPARED IN THE OFFICES OF
KEMMERER ENGINEERING CO., INC.

By Wesley C. Johnson
 REG. C. E. NO. 1000

FOR LEGEND SEE PLAN NO. S-A-64

- NOTES**
- PROVIDE STAKES ON THE PROPERTY LINE OR PROPERTY LINE PRODUCED AT RIGHT ANGLES TO THE SEWER LINE AT THE CENTER LINE OF EACH MANHOLE.
 - NO REPRESENTATIVE OF THE COUNTY ENGINEER WILL SURVEY OR LAYOUT ANY PORTION OF THE WORK.
 - THE OWNER OR HIS AUTHORIZED REPRESENTATIVE SHALL FURNISH THE COUNTY ENGINEER WITH GRADE SHEETS AND STATIONING PLAYS. BRANCHES AND Y BRANCHES AND Y BRANCHES SHALL BE SHOWN WITH GRADE SHEETS AND STATIONING PLAYS. ANY CHANGE IN LOCATION SHALL BE REQUESTED IN WRITING BY THE OWNER OR HIS REPRESENTATIVE.
 - NO REVISIONS SHALL BE MADE IN THESE PLANS WITHOUT THE APPROVAL OF THE COUNTY ENGINEER.
 - USE STANDARD MANHOLE FRAMES AND COVERS, S-A-117, EXCEPT AS NOTED.
 - USE CEMENT MORTAR FOR ALL VITRIFIED CLAY PIPE JOINTS.
 - REPLACE ALL TRENCH WITHIN RAVINE AREA TO MEET L. A. COUNTY ROAD DEPT. OR CALIF. STATE HIGHWAY DEPT. REQUIREMENTS IN ACCORDANCE WITH PERMITS.
 - SHOULDER FOUR FEET OF SEWER AT POINTS OF INTERFERENCE WITH POLES, S-A-119.
 - HOUSE LATERALS TO BE CONSTRUCTED WITH INVERTS AT PROPERTY LINE 6 FEET BELOW CURB GRADE EXCEPT AS NOTED.
 - FOR ALLOWABLE LEAKAGE TEST USE FORMULA NO. 1, SPC'S, SEC. 31.
 - MANHOLE TOPS IN UNIMPROVED RIGHTS-OF-WAY TO BE 2 FEET ABOVE FINISHED GRADE.
 - THE COUNTY ENGINEER IS TO FURNISH THE MINIMUM LATERAL DEPTH AT THE PROPERTY LINE BELOW THE TOP OF CURB ELEVATION FOR EACH HOUSE LATERAL, ON THE GRADE SHEET.

NO CHARGE FOR CONNECTIONS
 2 Sheets 7-2-56

NOTE

GRADES TO WHICH THIS IMPROVEMENT IS TO BE CONSTRUCTED ARE SHOWN ON PLANS AND PROFILES. GRADE POINTS AND TOP OF CURB, CENTER LINE OF STREETS, OR CENTER LINE OF ALLEYS ARE SHOWN BY CIRCLES ON PROFILES AT ALL POINTS BETWEEN DESIGNATED POINTS. THE GRADE SHALL BE ESTABLISHED SO AS TO CONFORM TO A STRAIGHT LINE DRAWN BETWEEN SAID DESIGNATED POINTS.

ELEVATIONS ARE IN FEET ABOVE U.S.C. & G.S. MEAN SEA LEVEL, ON THE BASIS OF THE COUNTY ENGINEER'S SURVEY. THIS DRAWING AND THE DATA THEREON ARE HEREBY MADE A PART OF THE SPECIFICATIONS FOR THE WORK TO BE CONSTRUCTED.

WORK SHALL BE CONSTRUCTED ACCORDING TO SPECIFICATIONS ON FILE IN THE OFFICE OF THE COUNTY ENGINEER AND SHALL BE PROSECUTED ONLY IN THE PRESENCE OF THE COUNTY ENGINEER.

L. A. COUNTY ROAD DEPT. FOR W. 2ND ST. AND BAY ST. MUST OBTAIN A PERMIT TO EXCAVATE IN COUNTY STREETS FROM THE ROAD DEPT. SUFFICIENT TO COVER THE COST OF CONSTRUCTION INSPECTION AND RECORD PLANS.

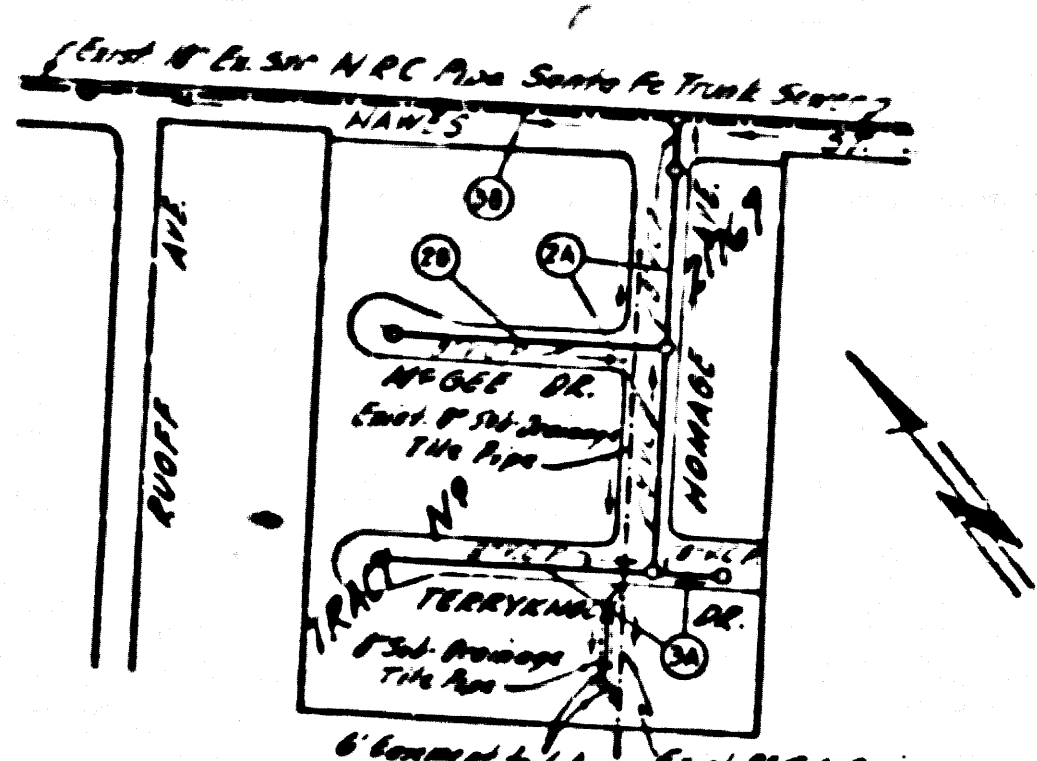
APPROVAL OF THIS PLAN BY THE COUNTY OF LOS ANGELES DOES NOT CONSTITUTE A REPRESENTATION AS TO THE ACCURACY OF THE LOCATION OR OF THE EXISTENCE OR NON-EXISTENCE OF ANY UNDERGROUND UTILITY PIPE, OR STRUCTURE WITHIN THE LIMITS OF THIS PROJECT. THIS NOTE APPLIES TO ALL PAGES.

IF WORK IS TO BE DONE IN A STATE HIGHWAY, A PERMIT MUST BE OBTAINED FROM THE STATE OF CALIFORNIA, DIVISION OF HIGHWAYS, 120 SOUTH SPRING STREET.

COUNTY OF LOS ANGELES, CALIFORNIA

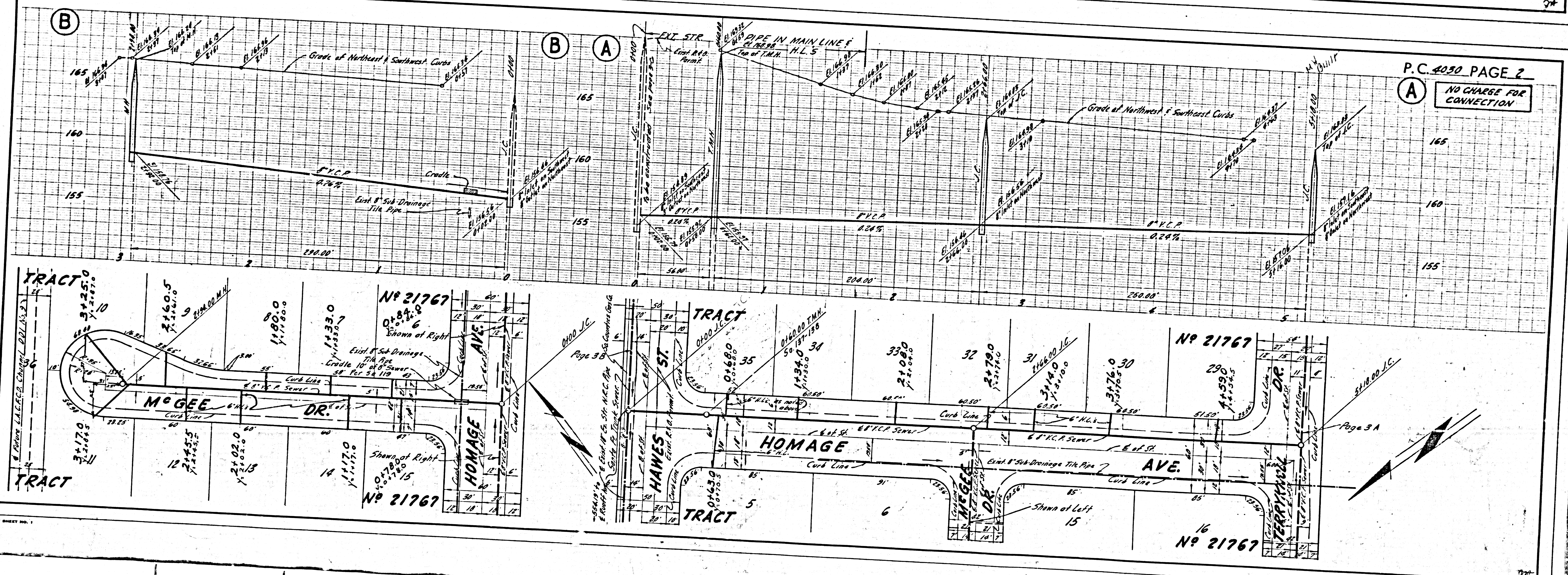
APPROVED, JOHN A. LAMBE, COUNTY ENGINEER
 APPROVED, A. M. BAWN, CHIEF ENGINEER
 BY A. P. Collins SANITATION ENGINEER
 BY J. J. Williams OFFICE ENGINEER
 CHECKED BY R. J. ... 7-2-56
 OFFICE OF COUNTY ENGINEER, REG. C. E. NO. 1240

B.M.S.Y. 2551
 L.F.T. in N.E. Cor. of Conc. Steps to House
 No. 9945 Mills Ave. @ S.W. Cor. of Mills
 & Home St. E.L. 164312



INDEX MAP
 TRACT N° 21767
 Scale: 1" = 300' P.C. 4030

checked 10-8-56 McFarlane



P.C. 4030 PAGE 2

NO CHARGE FOR CONNECTION

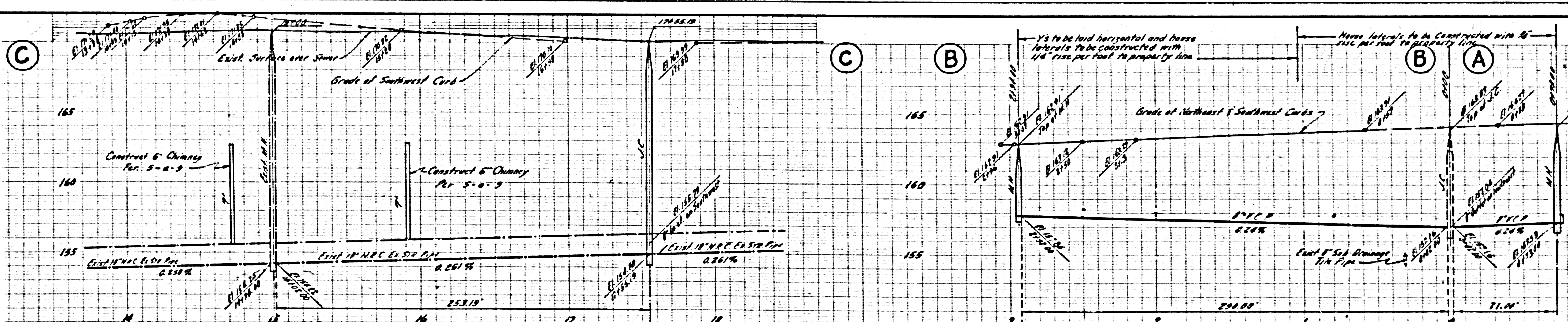
P.C. 4030

BC

RE. 4030 PAGE 3

23,505

NO CHARGE FOR CONNECTIONS



PORTION OF THE CORONEL AND SANCHEZ TRACT M.R. 60-73

