

BENCH MARK 501847 Elev. 361.560
Lead of Bench Nail Near Center of Curb Return
at S.E. Corner of GALE AVENUE & SEVENTH
Ave. Subtract 0.13 from Elevation to be on 1925 Ad.

**COLLECT CHARGES
AS INDICATED**
5/15/56 23657

DO NOT ISSUE PERMITS
UNTIL TRACT NO. 21519 HAS BEEN RECORDED.

PUEENTE BLDG. DIST. NO. 2

- NOTE:
1. THE STAKES ON THE PROPERTY LINE OR PROPERTY LINES PRODUCED AT RIGHT ANGLES TO THE SEWER LINE AT THE CENTER LINE OF EACH MANHOLE.
2. NO REPRESENTATIVE OF THE COUNTY ENGINEER WILL SURVEY OR LAYOUT ANY PORTION OF THE WORK.
3. THE OWNER OR HIS REPRESENTATIVE SHALL FURNISH THE COUNTY ENGINEER WITH GRADE SHEETS AND STATIONS FOR ALL HOUSE LATERALS AND Y BRANCHES AND SHALL PROVIDE STAKES FOR THEM AT THESE PROPOSED LOCATIONS WITH STATIONING PLAINLY MARKED. ANY CHANGE IN LOCATION SHALL BE REQUESTED BY WRITING BY THE OWNER OR HIS REPRESENTATIVE. NO REVISIONS SHALL BE MADE IN THESE PLANS WITHOUT THE APPROVAL OF THE COUNTY ENGINEER.
4. USE STANDARD MANHOLE FRAMES AND COVERS, S.A. 117, EXCEPT AS NOTED.
5. USE STANDARD STRENGTH PIPE EXCEPT AS NOTED.
6. USE CEMENT MORTAR FOR ALL VITRIFIED CLAY PIPE JOINTS.
7. RESURFACE ALL TRENCH WITHIN PAVED AREA TO MEET L. A. COUNTY ROAD DEPT. OR CALIF. STATE HIGHWAY DEPT. REQUIREMENTS IN ACCORDANCE WITH PERMITS.
8. INDICATE FOUR FEET (4') SPACES AT POINTS OF INTERFERENCE WITH POLES, S.A. 119.
9. HOUSE LATERALS TO BE CONSTRUCTED WITH BRICKS AT PROPERTY LINE, 6" FEET BELOW CURB GRADE EXCEPT AS NOTED.
10. ALL STRUCTURES SHALL BE BUILT IN ACCORDANCE WITH SPECIFICATIONS, S.A. 104, EXCEPT AS NOTED.
11. FOR ALLOWABLE LEAKAGE TEST USE FORMULA NO. 1, S.P.C.E. SEC. 66.
12. MANHOLE TOPS IN UNIMPROVED RIGHTS-OF-WAY TO BE 4" ABOVE FINISHED GRADE.
13. THE PRIVATE ENGINEER IS TO FURNISH THE HOUSE LATERAL GRADE AT THE PROPERTY LINE BELOW THE TOP OF CURB ELEVATION FOR EACH HOUSE LATERAL, ON THE GRADE SHEET.

NOTE:
THE CONTRACTOR SHALL NOTIFY THE CONSTRUCTION AND STORM DRAIN DIVISION BY TELEPHONE, MADISON 9-4747, EXT. 307, AT LEAST 24 HOURS BEFORE STARTING ANY WORK UNDER THIS CONTRACT.

PROFILE ALIGNMENT AND GRADE OF **P.C. 4031**
SANITARY SEWERS PAGE **1**

TO BE CONSTRUCTED FOR
TRACT NO. 21519 (25,109)

PRIVATE CONTRACT NO. 4031
W.S. 37

3 SHEETS, 6 PAGES
SCALE: 1"=4' HORIZ. 1"=4' VERT. MAY, 1956

PREPARED IN THE OFFICES OF
H.R. LOVETT & ASSOCIATES, INC.

By *J. A. Montgomery* REG. C. E. NO. 4152
FOR LEGEND SEE PLAN NO. S-A-34

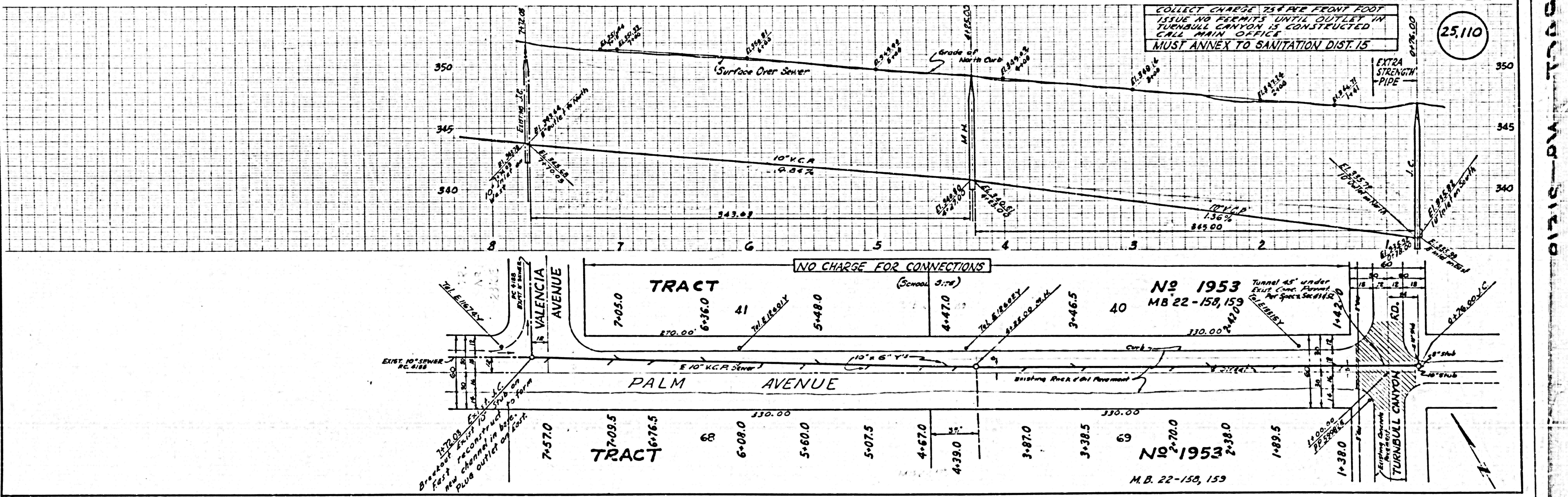
NOTE:
GRADES TO WHICH THIS IMPROVEMENT IS TO BE CONSTRUCTED ARE SHOWN ON PLANS AND PROFILE GRADE SHEETS FOR 1/2" OF CURB, CENTER LINE OF STREETS OR CENTER LINE OF CULVERTS OR PROFILES AT ALL POINTS BETWEEN DESIGNATED POINTS. THE GRADE SHALL BE ESTABLISHED SO AS TO CONFORM TO A SMOOTH LINE DRAWN BETWEEN SAID DESIGNATED POINTS.
ELEVATIONS ARE IN FEET ABOVE U.S.C. & G.S. MEAN SEA LEVEL DATUM BY 1929.
THIS DRAWING AND THE DATA HEREON ARE HEREBY MADE A PART OF THE SPECIFICATIONS.
WORK SHALL BE CONSTRUCTED ACCORDING TO SPECIFICATIONS ON FILE IN THE OFFICE OF THE COUNTY ENGINEER AND SHALL BE PROSECUTED ONLY IN THE PRESENCE OF THE COUNTY ENGINEER.
BEFORE WORK CAN BE STARTED, THE CONTRACTOR MUST OBTAIN A PERMIT TO EXCAVATE IN COUNTY STREETS FROM THE L. A. COUNTY ROAD DEPT., 128 W. 3RD ST. AND HAVE A DEPOSIT WITH THE COUNTY ENGINEER, ROOM 324 PAM. AMERICAN BUILDING, 232 SO. BROADWAY, SUFFICIENT TO COVER THE COST OF CONSTRUCTION INSPECTION AND RECORD PLANS.
APPROVAL OF THIS PLAN BY THE COUNTY OF LOS ANGELES DOES NOT CONSTITUTE A REPRESENTATION AS TO THE ACCURACY OF THE LOCATION OR THE EXISTENCE OR NON-EXISTENCE OF ANY UNDERGROUND UTILITY PIPE, OR STRUCTURE WITHIN THE LIMITS OF THIS PROJECT. THE CONTRACTOR SHALL BE RESPONSIBLE FOR THE LOCATION OF ALL UTILITIES.
IF WORK IS TO BE DONE IN A PAVED HIGHWAY, A PERMIT MUST BE OBTAINED FROM THE STATE OF CALIFORNIA, DIVISION OF HIGHWAYS, 128 SOUTH SPRING STREET.

COUNTY OF LOS ANGELES, CALIFORNIA

APPROVED, JOHN A. LAMME, COUNTY ENGINEER
APPROVED, A. M. RAWNS, CHIEF ENGINEER
COL. JAM. DIST. NO. 13
BY *B. A. Hughes* REGULATION ENGINEER BY *A. M. Rawns* OFFICE ENGINEER
CHECKED BY *W. C. Oude* 9-4-57
OFFICE OF COUNTY ENGINEER, REG. C. E. NO. 2406

P.C. 4031 PAGE 2

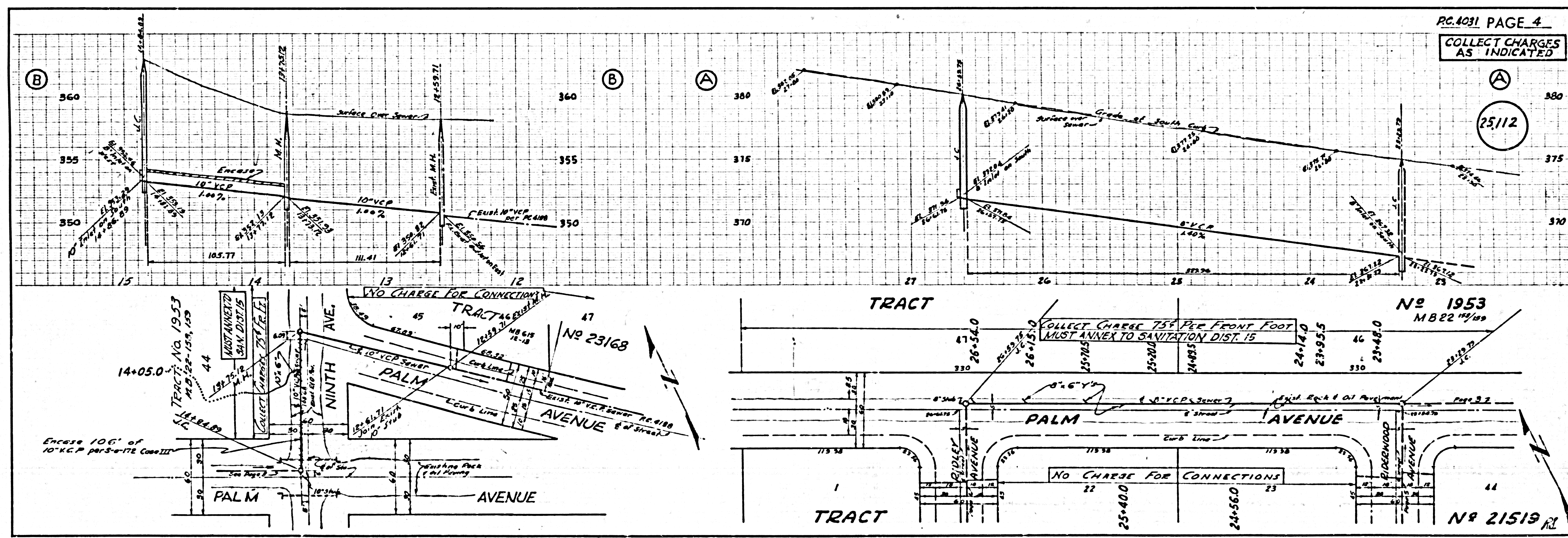
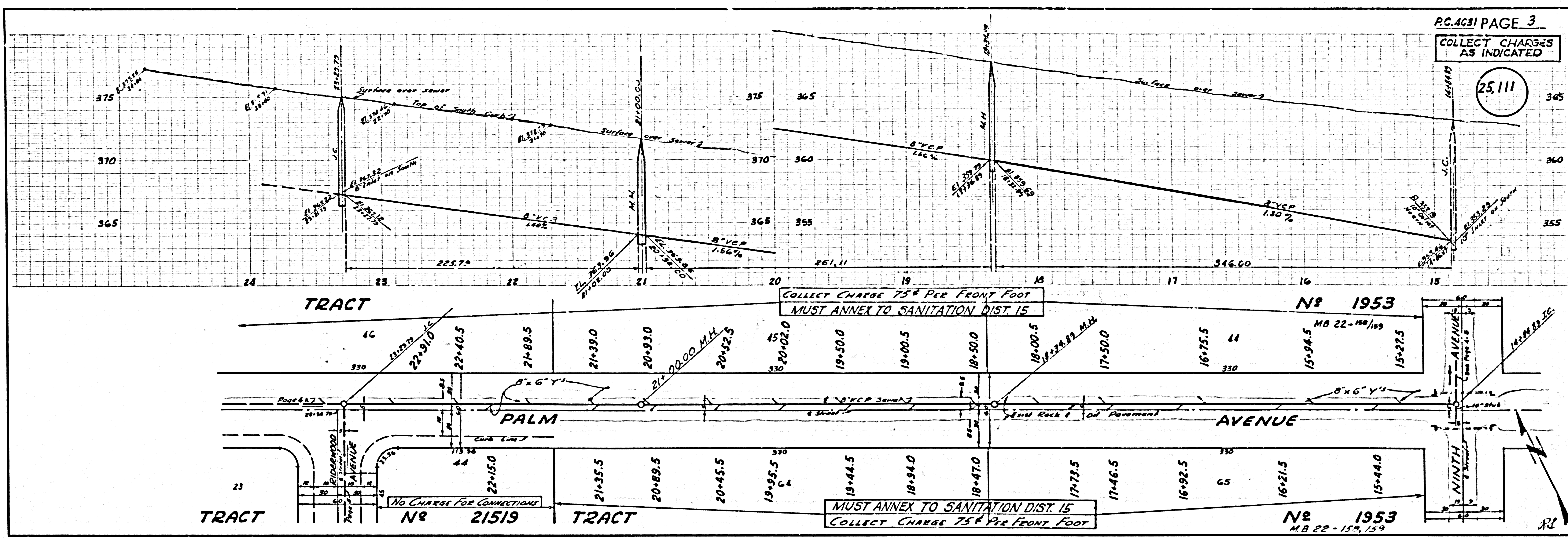
COLLECT CHARGE 75¢ PER FRONT FOOT
ISSUE NO PERMITS UNTIL OUTLET IN
TUNNEL IS CONSTRUCTED
CALL MAIN OFFICE
MUST ANNEX TO SANITATION DIST. 15



X See collect map above pt.

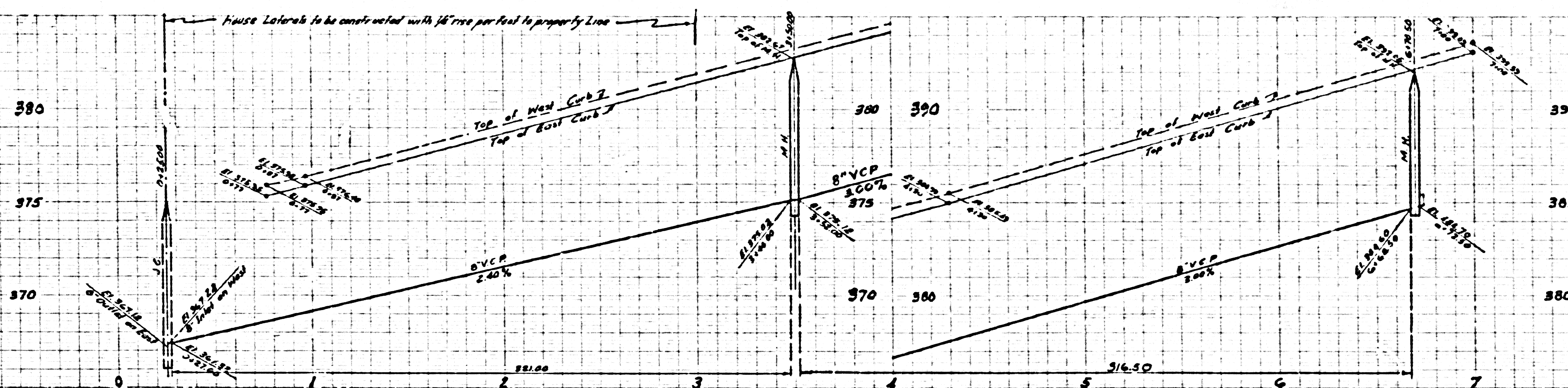
P.C. 4031

P.C. 4031 PAGE 2

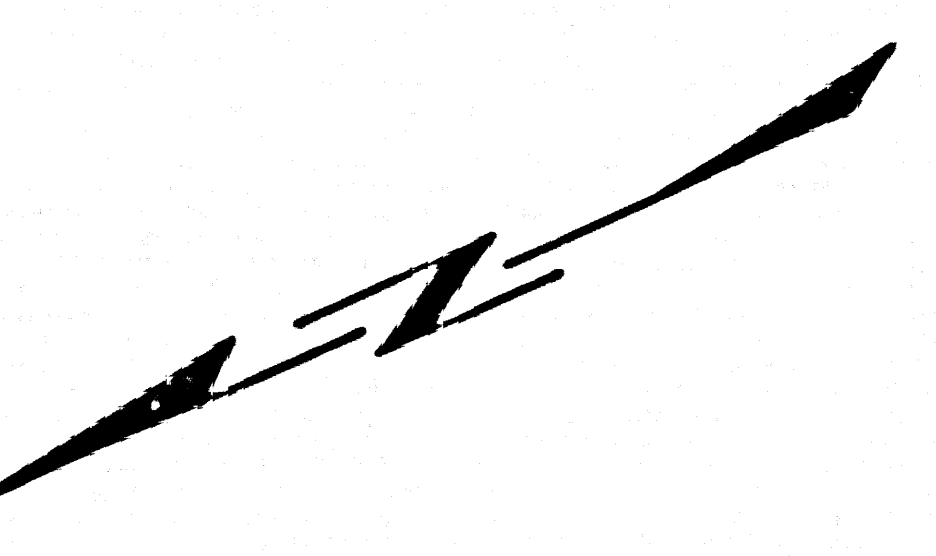


NO CHARGE FOR CONNECTIONS

25113

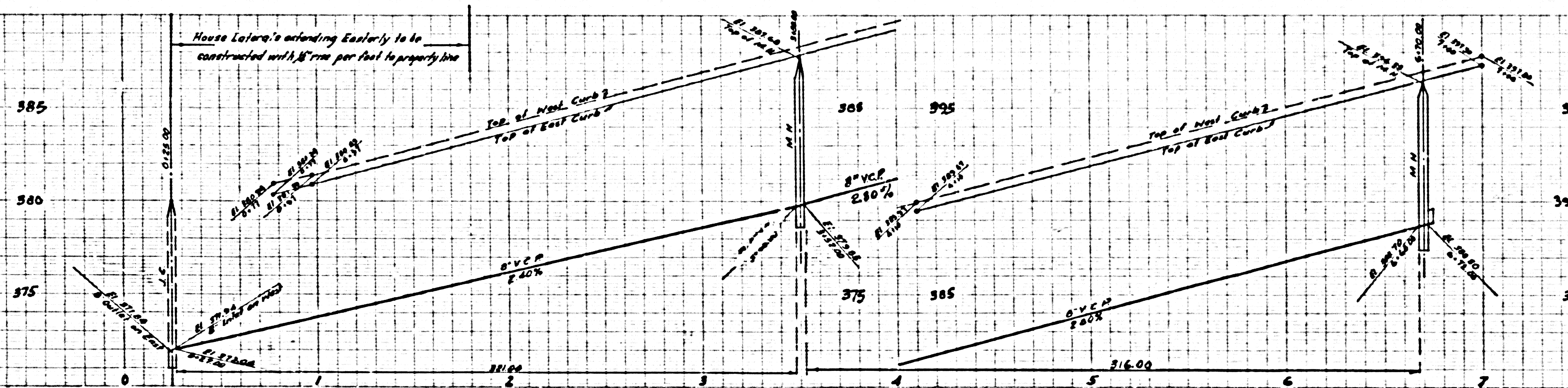


TRACT												No 21519	
14	43	42	41	40	39	38	37	36	35	34			
0-950 1-2-25.0	1-480 1-2-25.0	2-060 1-2-25.0	2-670 1-2-25.0	3-250 1-2-25.0	3-900 1-2-25.0	4-530 1-2-25.0	5-060 1-2-25.0	5-650 1-2-25.0	6-250 1-2-25.0	6-870 1-2-25.0	5533		
RIDERWOOD AVENUE													
23	24	25	26	27	28	29	30	31	32	33			
0-985 1-2-25.0	1-530 1-2-25.0	2-100 1-2-25.0	2-710 1-2-25.0	3-280 1-2-25.0	3-945 1-2-25.0	4-570 1-2-25.0	5-110 1-2-25.0	5-700 1-2-25.0	6-310 1-2-25.0	6-970 1-2-25.0	5533		
TRACT												No 21519	



NO CHARGE FOR CONNECTIONS

25114



TRACT												No 21519	
22	21	20	19	18	17	16	15	14	13	12			
0-910 1-2-25.0	1-440 1-2-25.0	2-100 1-2-25.0	2-700 1-2-25.0	3-300 1-2-25.0	3-850 1-2-25.0	4-560 1-2-25.0	5-070 1-2-25.0	5-630 1-2-25.0	6-250 1-2-25.0	6-870 1-2-25.0	5533		
RIDLEY AVENUE													
46	45	44	43	42	41	40	39	38	37	36			
0-950 1-2-25.0	1-480 1-2-25.0	2-140 1-2-25.0	2-750 1-2-25.0	3-360 1-2-25.0	3-990 1-2-25.0	4-610 1-2-25.0	5-120 1-2-25.0	5-670 1-2-25.0	6-290 1-2-25.0	6-970 1-2-25.0	5533		
TRACT												No 21519	

