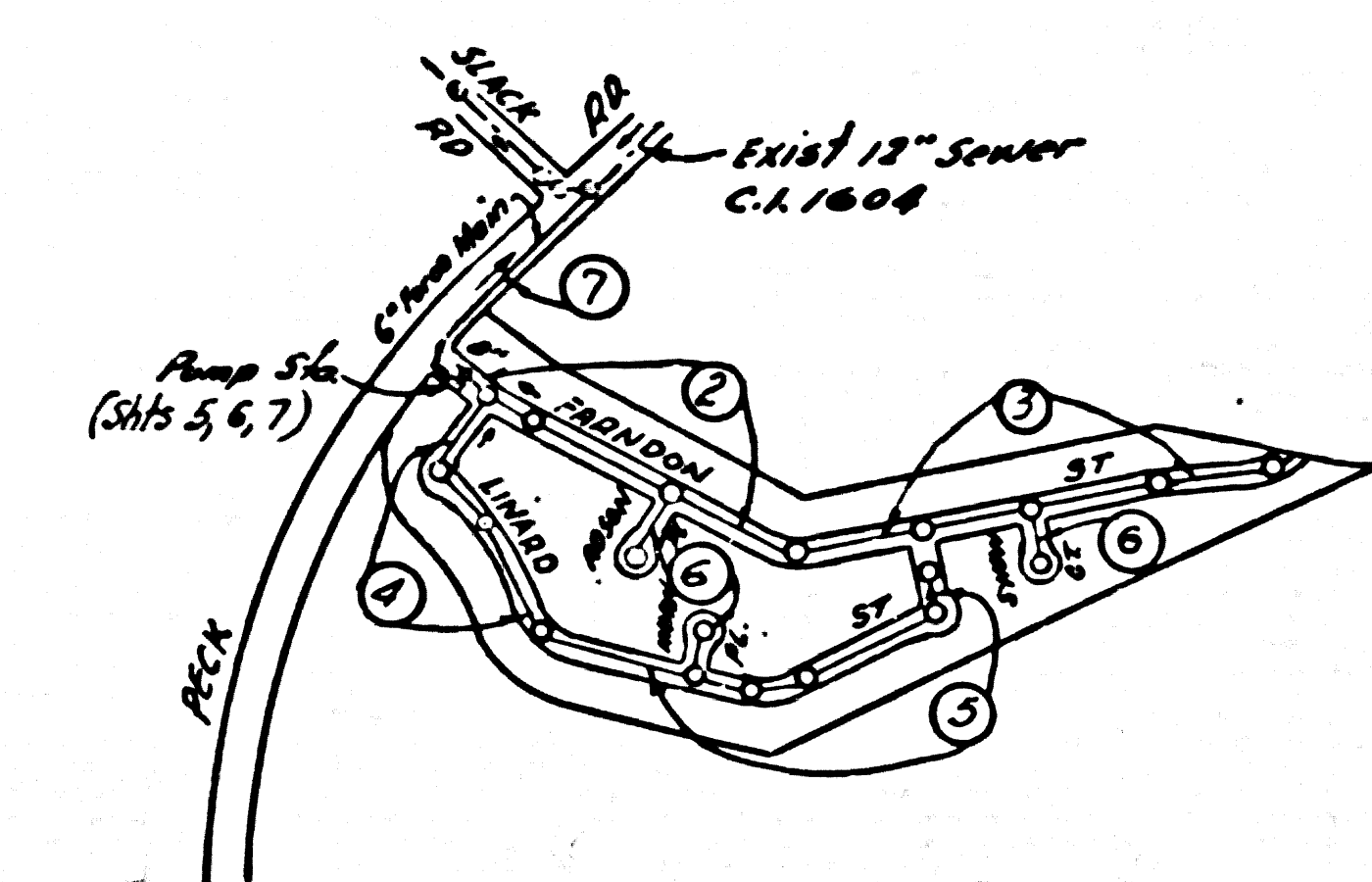


**PUENTE BLDG. DIST. NO. 2**

PROFILE ALIGNMENT AND GRADE OF **P.C. 4033**  
**SANITARY SEWERS PAGE 1**  
 TO BE CONSTRUCTED IN  
**TRACT N° 19442 (25,780)**

**NOTE:**  
 THE CONTRACTOR SHALL NOTIFY THE CONSTRUCTION AND  
 STORAGE DIVISION BY TELEPHONE MADISON 9-4747,  
 EXT. 352, AT LEAST 24 HOURS BEFORE STARTING ANY  
 WORK UNDER THIS CONTRACT.

B.M. 5112.77 CH 230455 L.A. Co. Rd. Dept. man  
 with 6" x 8" cap 12" deep 5' head of concrete  
 of curve sta 38+26.53 on Peck Road. Walter Dunbar



**INDEX MAP**  
**TRACT N° 19442**  
**P.C. 4033 Scale: 1"=600'**

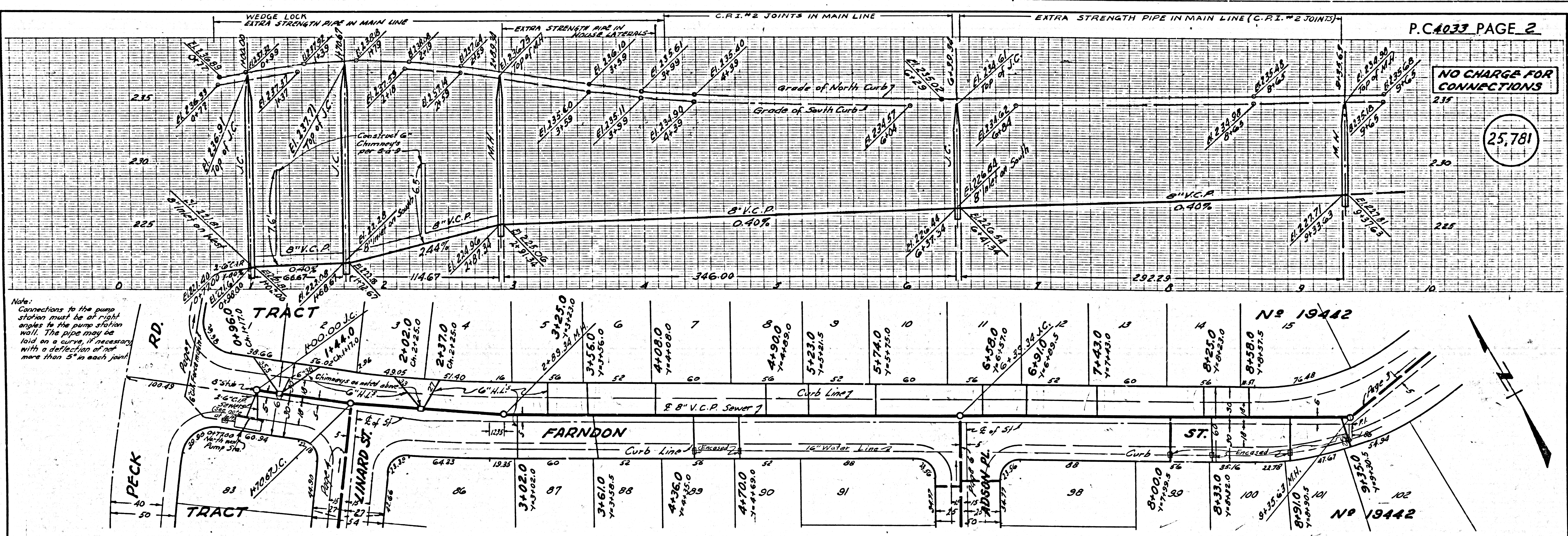
- NOTE:**  
 PROVIDE STAKES ON THE PROPERTY LINE OR PROPERTY LINES PRODUCED AT RIGHT ANGLES TO THE CENTER LINE AT THE CENTER  
 LINE OF EACH MANHOLE.  
 NO REPRESENTATIVE OF THE COUNTY ENGINEER WILL SURVEY OR LAYOUT ANY PORTION OF THE WORK.  
 THE OWNER OR HIS AUTHORIZED REPRESENTATIVE SHALL FURNISH THE COUNTY ENGINEER WITH GRADE SHEETS AND STATION  
 FOR ALL HOUSE LATERALS AND T BRANCHES AND SHALL PROVIDE STAKES FOR THEM AT THEIR PROPER LOCATIONS WITH STATION  
 AND PLAINLY MARKED. ANY CHANGE IN LOCATION SHALL BE REQUESTED IN WRITING BY THE OWNER OR HIS REPRESENTATIVE.  
 NO REVISIONS SHALL BE MADE IN THESE PLANS WITHOUT THE APPROVAL OF THE COUNTY ENGINEER.
- USE STANDARD MANHOLE FRAMES AND COVERS, S.A. 117, EXCEPT AS NOTED.
  - USE STANDARD STRENGTH PIPE EXCEPT AS NOTED.
  - USE JOINT COMPOUNDS FOR ALL VITRIFIED CLAY PIPE JOINTS. PER SPEC'S, S.C. 33, EXCEPT AS NOTED BELOW (NOTE #11).
  - RESURFACE ALL TRENCH WITHIN PAVED AREA TO MEET L. A. COUNTY ROAD DEPT. OR CALIF. STATE HIGHWAY DEPT. REQUIREMENTS IN ACCORDANCE WITH PERMITS.
  - DISCASE FOUR FEET OF SEWER AT POINTS OF INTERFERENCE WITH PLATS, S.A. 119.
  - HOUSE LATERALS TO BE CONSTRUCTED WITH INVERTS AT PROPERTY LINE 8" BELOW CURB GRADE EXCEPT AS NOTED.
  - ALL STRUCTURES SHALL BE BRICK SEWER STRUCTURAL, S.A. 104, EXCEPT AS NOTED.
  - FOR ALLOWABLE LEAKAGE TEST USE FORMULA NO. 2, S.P.C.E., SEC. 54.
  - MANHOLE TOPS IN UNIMPROVED RIGHTS-OF-WAY TO BE 6" ABOVE FINISHED GRADE.
  - The Private Engineer is to furnish the House Lateral depth at the property line below the top of curb elevation for each house lateral on the grade sheet.
  - Where ground water is encountered all vitrified clay pipe joints shall be made per Spec's, Sec's 35 and 48 (metal gaskets and farms) or Sec's 36 and 43 (Wedge-Lock or Speed-Seal joints.)
  - All locations shown for existing substructures have been taken from records if their correctness & completeness is in no way guaranteed. It shall be the contractor's responsibility alone to definitely locate all underground pipes of every nature whether shown herein or not & protect them from damage. The contractor shall bear the total expense or repair to any line damaged by any excavation in connection with the prosecution of this work.

**NO CHARGE FOR CONNECTIONS**  
 7-29-58

**PRIVATE CONTRACT NO. 4033**  
 W.S. 37  
 7 SHEETS, 10 PAGES  
 SCALE: VERT. 1"=4' HORIZ. 1"=40' APRIL, 1957  
 PREPARED BY THE OFFICES OF  
**BARCLAY ENGINEERING CO.**  
 BY: *Edward J. Pinner*  
 REG. C. E. NO. 2113  
 FOR LEGEND SEE PLAN NO. S-A-64

**NOTE:**  
 GRADES TO WHICH THIS IMPROVEMENT IS TO BE CONSTRUCTED ARE SHOWN ON PLANS AND PROFILES. GRADE POINTS FOR  
 TOP OF CURBS, CENTER LINE OF STREETS, OR CENTER LINE OF ALLEYS ARE SHOWN BY CIRCLES ON PROFILES AT ALL POINTS BETWEEN  
 DESIGNATED POINTS. THE GRADE SHALL BE ESTABLISHED SO AS TO COMFORM TO A STRAIGHT LINE DRAWN BETWEEN SAID DESIGNATED  
 POINTS.  
 ELEVATIONS ARE IN FEET ABOVE U.S.C. & G.S. MEAN LEVEL, DATUM OF 1929.  
 THIS DRAWING AND THE DATA HEREON ARE HEREBY MADE A PART OF THE SPECIFICATIONS.  
 WORK SHALL BE CONSTRUCTED ACCORDING TO SPECIFICATIONS ON FILE IN THE OFFICE OF THE COUNTY ENGINEER AND SHALL  
 BE PROSECUTED ONLY IN THE PRESENCE OF THE COUNTY ENGINEER.  
 BEFORE WORK CAN BE STARTED, THE CONTRACTOR MUST OBTAIN A PERMIT TO EXCAVATE IN COUNTY STREETS FROM THE  
 L. A. COUNTY ROAD DEPT., FOR THE WORK AND MAKE A DEPOSIT WITH THE COUNTY ENGINEER, ROOM 324 PAV. AMERICAN BLDG.,  
 333 S.O. BROADWAY SUFFICIENT TO COVER THE COST OF CONSTRUCTION INSPECTION AND RECORD PLANS.  
 APPROVAL OF THIS PLAN BY THE COUNTY OF LOS ANGELES DOES NOT CONSTITUTE A REPRESENTATION AS TO THE ACCURACY  
 OF THE LOCATION OF OR THE EXISTENCE OR NON-EXISTENCE OF ANY UNDERGROUND UTILITY PIPE, OR STRUCTURE WITHIN THE  
 LIMITS OF THE PROJECT. THIS NOTE APPLIES TO ALL PAGES.  
 IF WORK IS TO BE DONE IN A STATE HIGHWAY, A PERMIT MUST BE OBTAINED FROM THE STATE OF CALIFORNIA, DIVISION OF  
 HIGHWAYS, 128 SOUTH SPRING STREET.

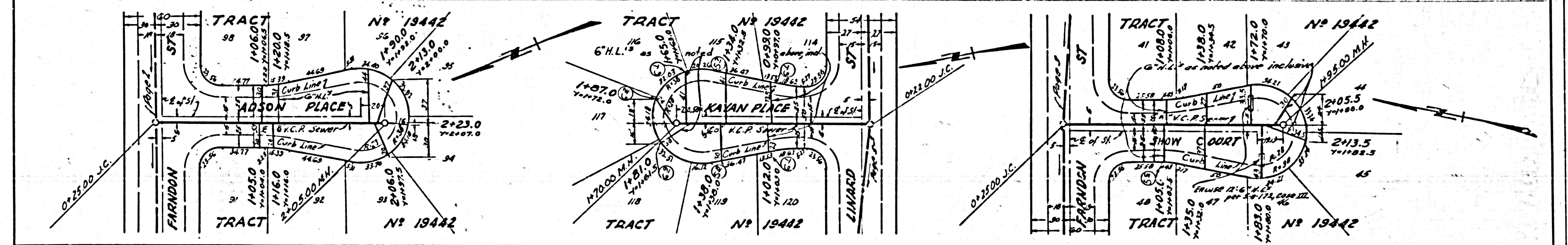
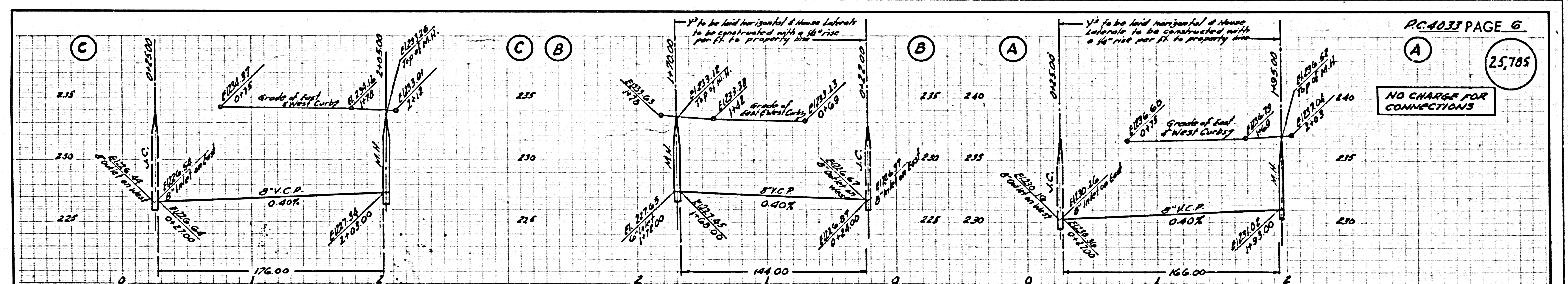
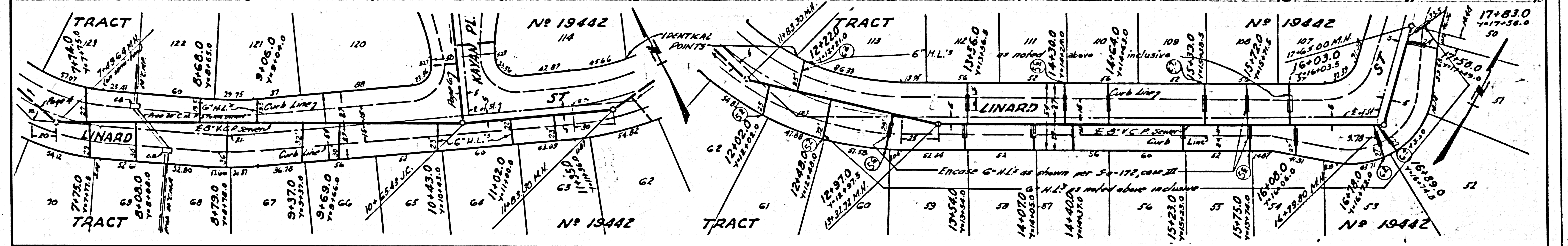
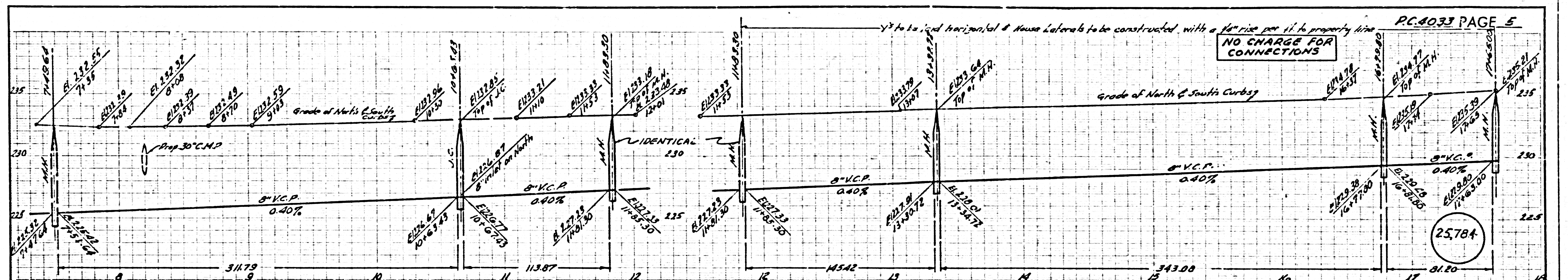
COUNTY OF LOS ANGELES, CALIFORNIA  
 APPROVED, JOHN A. LAMBE, COUNTY ENGINEER  
 APPROVED, A. M. BAWN, CHIEF ENGINEER  
 BY: *E. H. Hughes* SANITATION ENGINEER  
 BY: *A. M. Bawn* OFFICE ENGINEER  
 CHECKED BY: *Carl E. Pinner* 2/1/57  
 OFFICE OF COUNTY ENGINEER, REG. C. E. NO. 10639







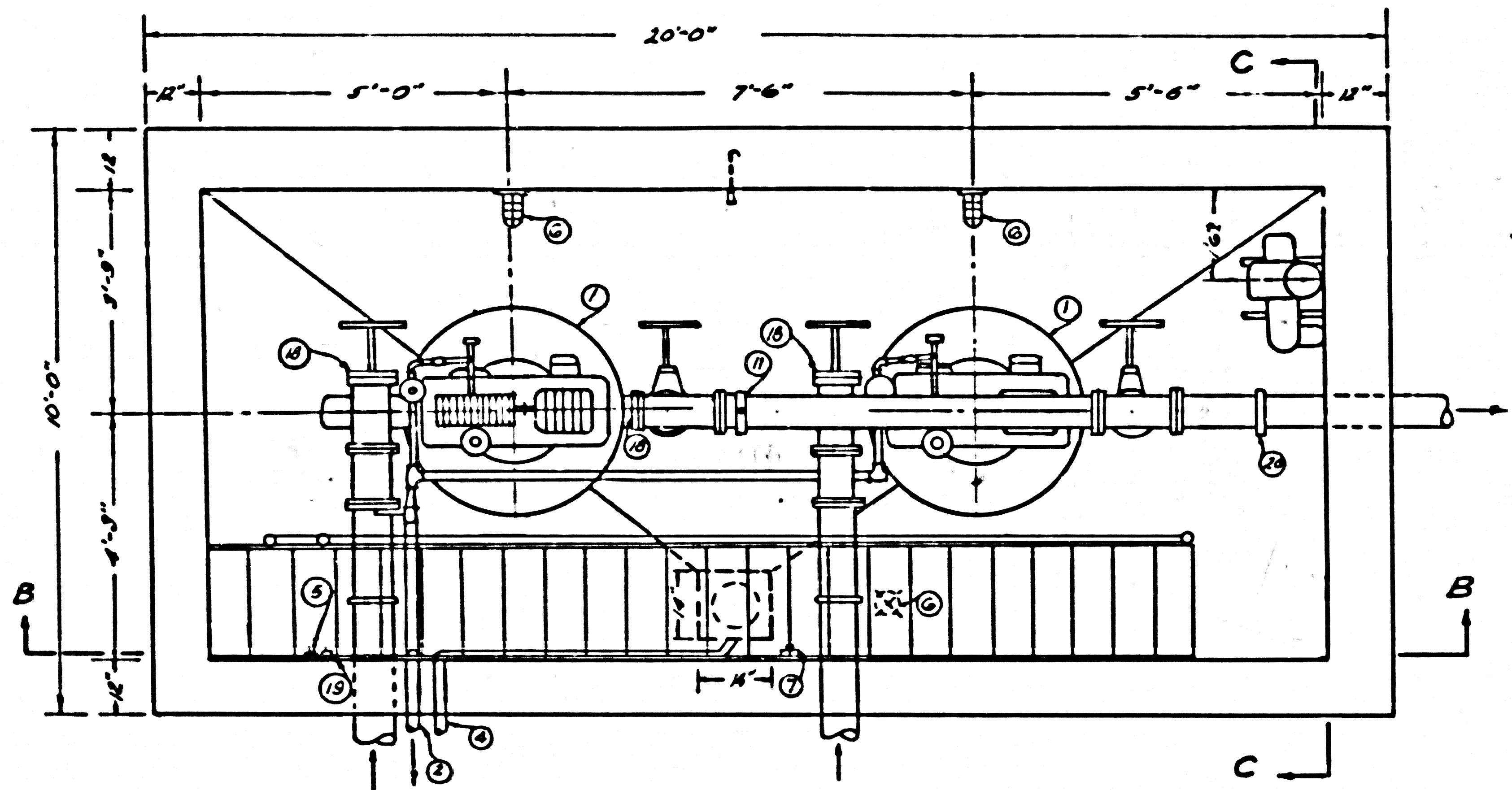




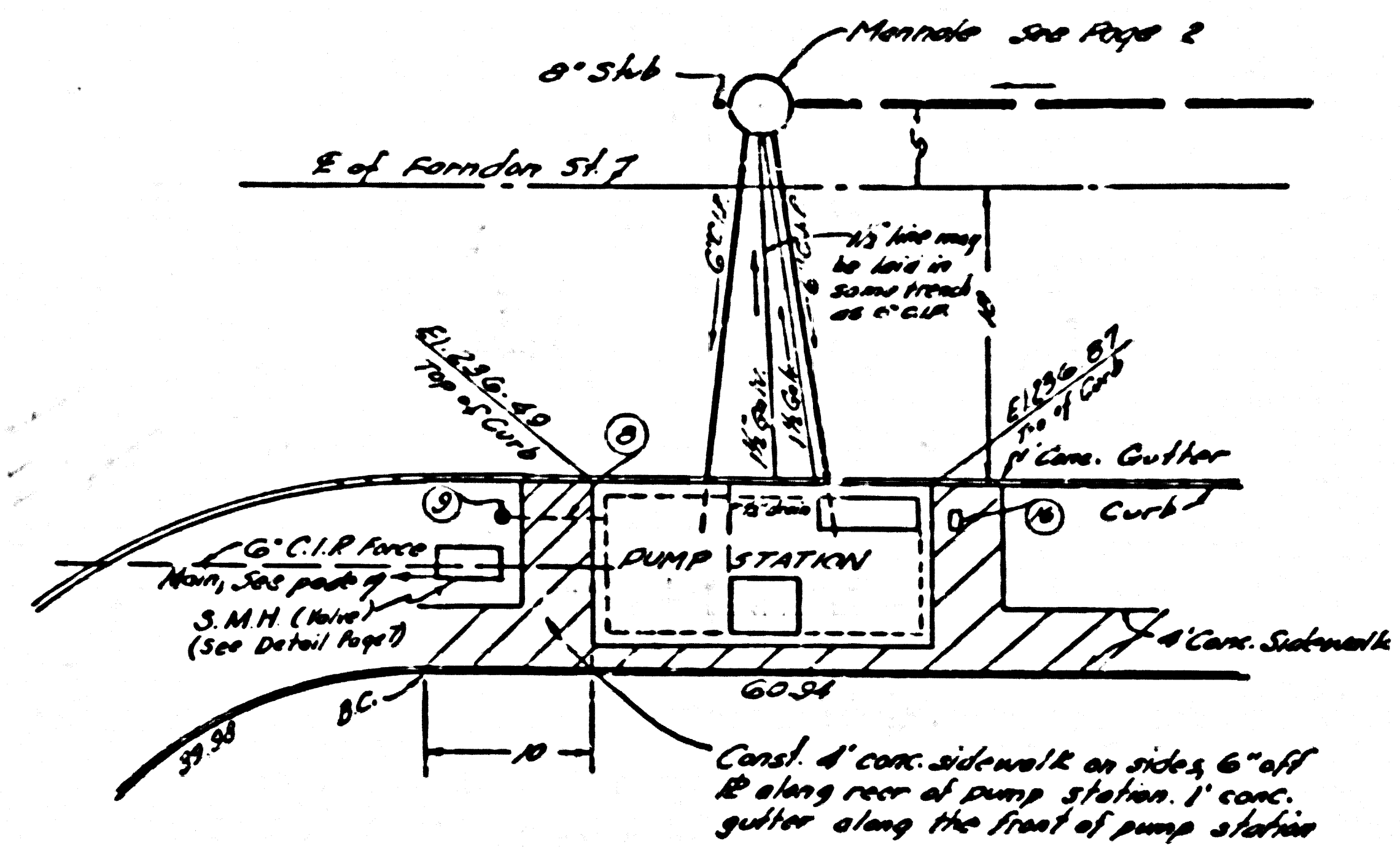




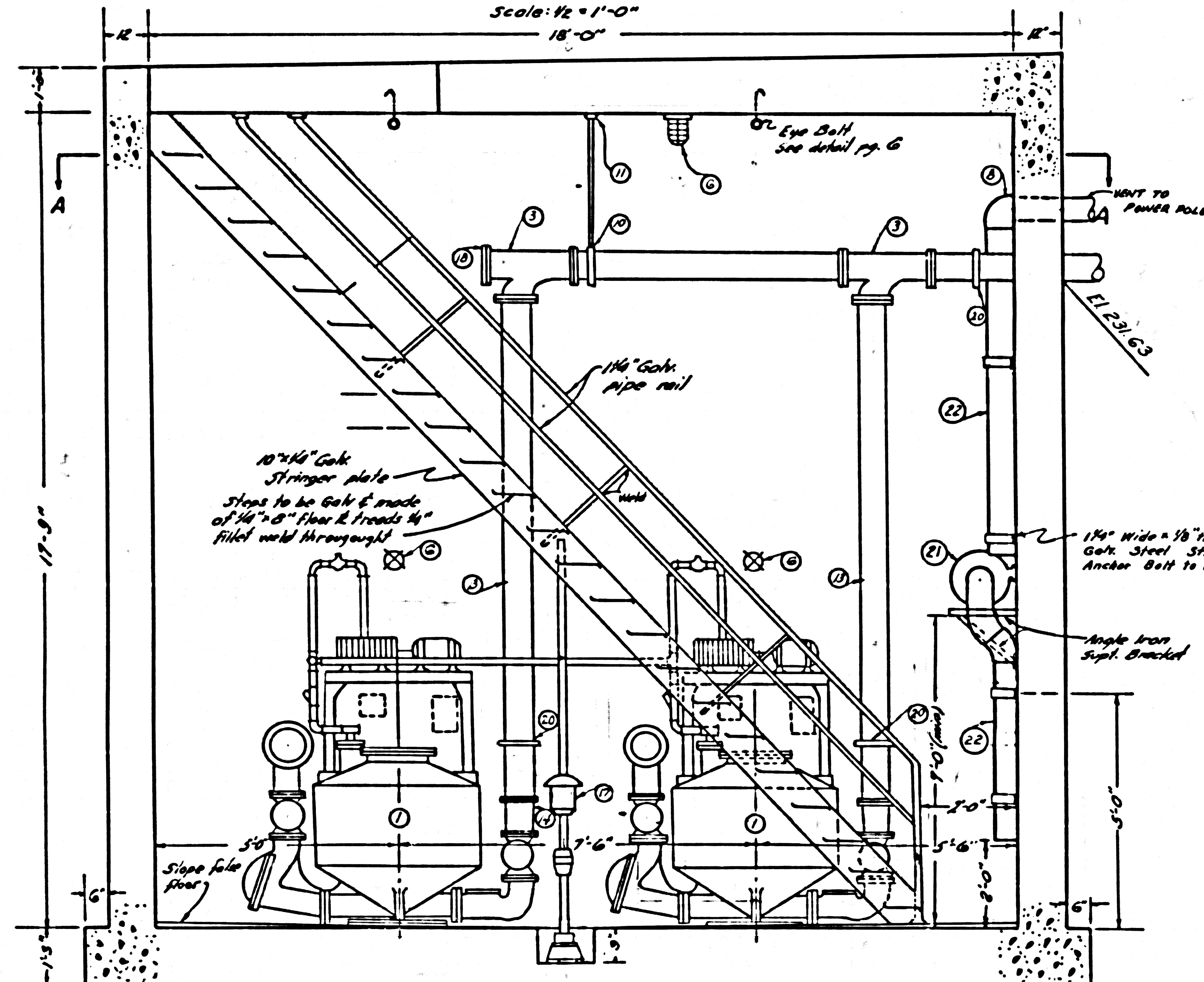




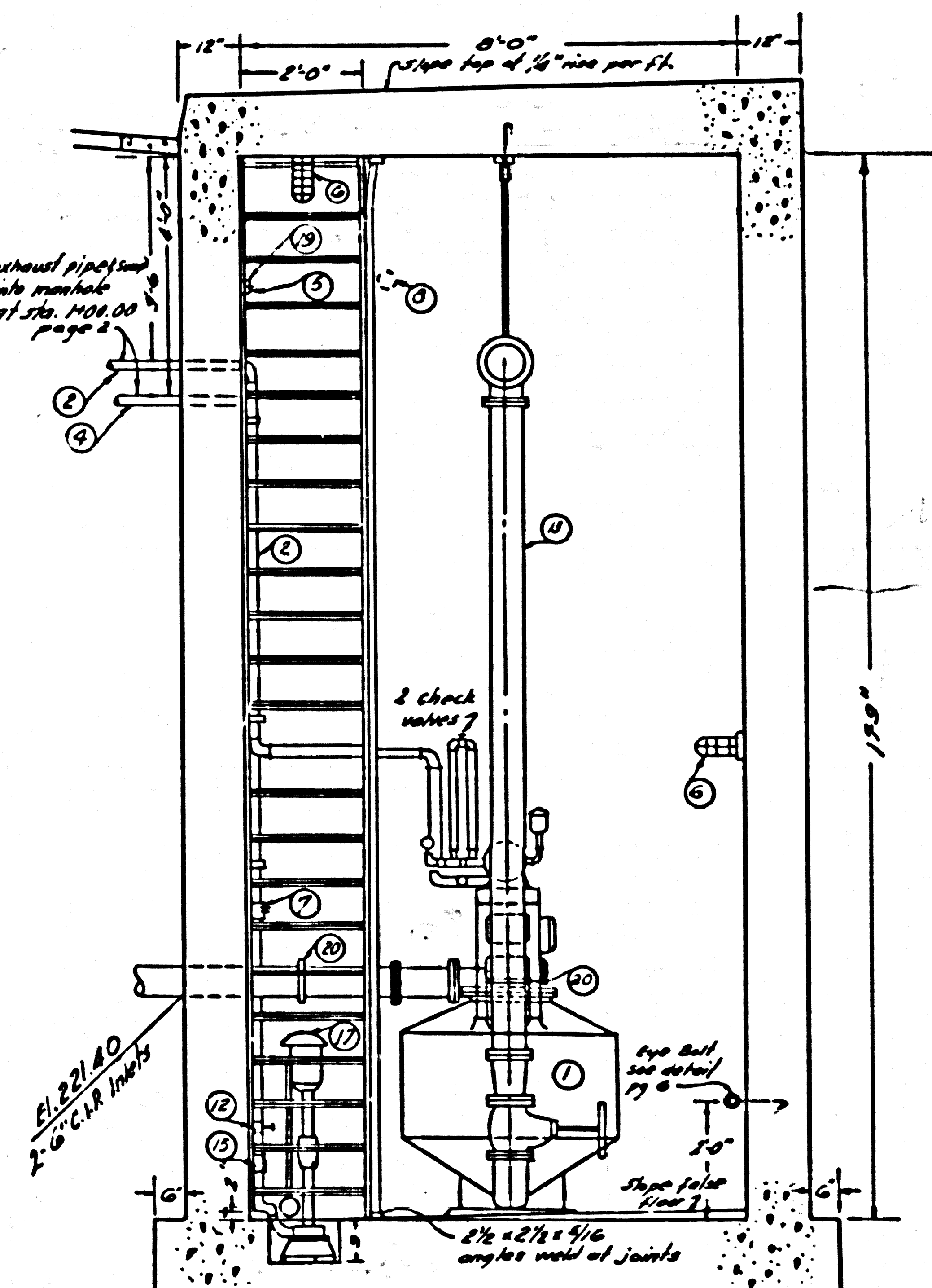
PLAN VIEW  
Section A-A  
Scale: 1/2" = 1'-0"



TRACT LOT 83  
No. 19442  
LOCATION PLAN  
Scale 1" = 10'-0"



SIDE VIEW  
Section B-B  
Scale: 1/2" = 1'-0"



END VIEW  
Section C-C  
Scale: 1/2" = 1'-0"

ITEM	QUANTITY	DESCRIPTION
1	2	100 Gal. capacity Shure Pneumatic Ejector Electrically controlled, package type, complete with receiver, automatic controls with compressor & motor, or approved equal.
2	40 lin. ft.	1 1/2" Galv. Iron Exhaust Pipe
3	2	6" x 6" Single Sweep Tee
4	30 lin. ft.	1 1/2" Galv. Iron Pipe
5	1	Light Switch - Vapor-tight
6	3	300 Volt Water-proof Lighting Fixture with guard
7	1	Vapor-tight Duplex convenience outlet
8	15 lin. ft.	6" Galv. Iron Pipe
9	25 lin. ft.	6" Crossed Wood Pole
10	1	7/8" Galv. Split Ring & Social Dome No. 107 R-6 or equal
11	1	3/8" Adj. Swing Hoopier Flange, Bolt to wall, Crain 156-6 or equal
12	1	1 1/2" Brass Gate Valve
13	1	6" C.I. Pipe (6" lines from Mill to pump sta. 6' above within station)
14	4	6" x 5" C.I. Eccentric Reducer - Flanged
15	1	1/2" Brass swing check valve
16	1	3/4" Special Brass Diamond Street washer with concealed hinge, Atholme Foundry Co. Plate No. A-332-A or approved equal, install with lockable cover.
17	1	Sump Pump (1 1/2" HP, 1750 RPM "Special Drain Dn. or equal)
18	3	6" Blind Flange
19	2	one remote hand-off automatic, wall mounted, vapor-tight switch for each ejector motor.
20	5	6" Dresser Coupling or approved equal
21	1	American Blower Co. No. 181, 5" Outlet, 1/4" HP, 80 cfm, 220V, or equal
22	12 lin. ft.	6" Transit pipe

GENERAL NOTES

- All cast iron pipe and fittings shall withstand 125 p.s.i. minimum working pressure.
- The Contractor is to furnish 1/2" water service to street washer at pump station.
- All electric equipment to be protected by circuit breakers, no fuses.
- If a pneumatic ejector other than the type specified should be installed, the contractor shall be responsible for setting any necessary bolts, etc.
- Electrical conduit shall be underground from the power pole to pump station.
- All materials used on this improvement shall be new.

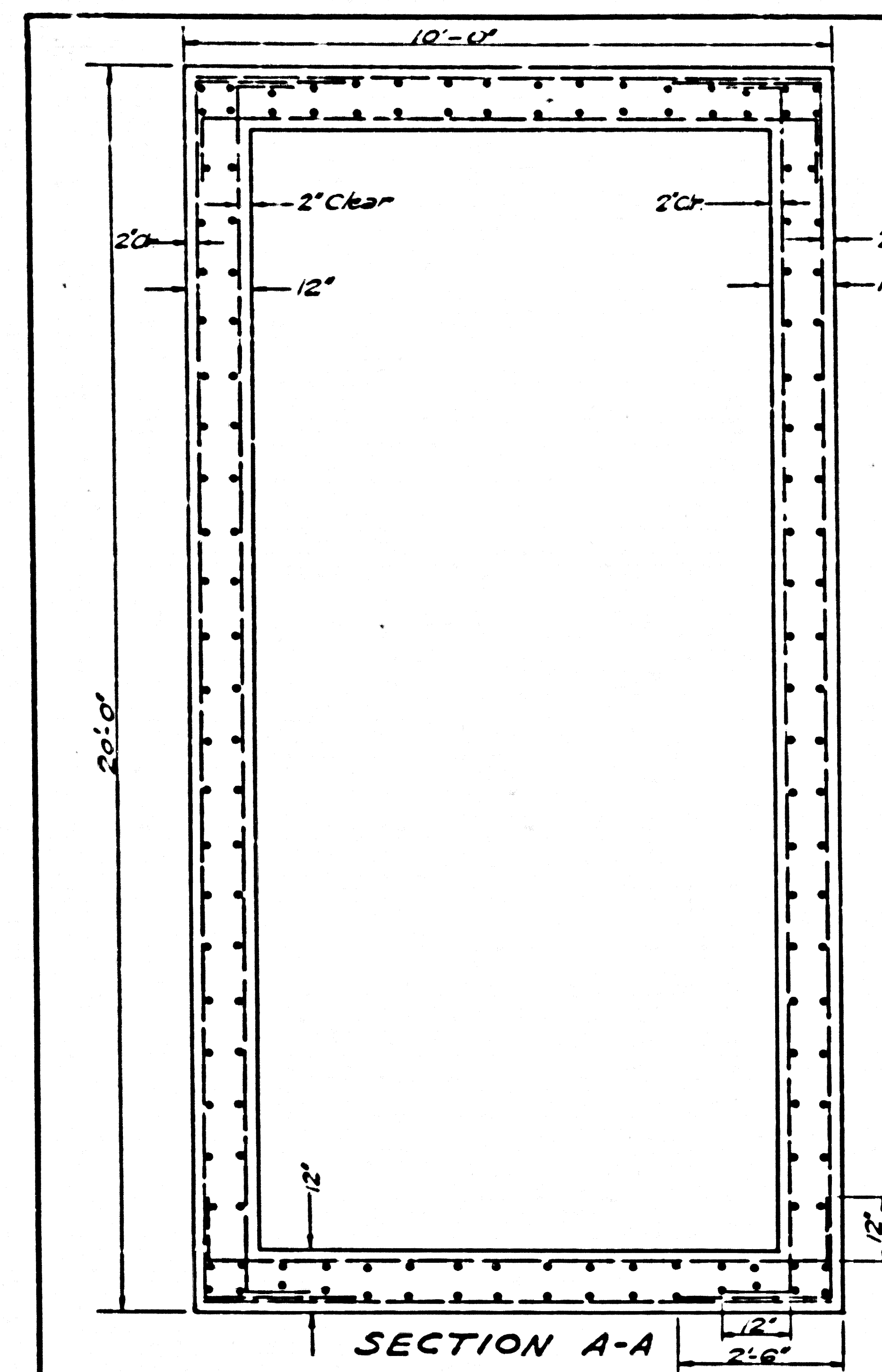
**PRIVATE CONTRACT NO. 4033**  
CONSTRUCTION PLANS FOR  
SEWAGE PUMP STATION  
TO SERVE  
**TRACT NO. 19442**  
SHEET 5 OF 7 SHEETS  
Scale: 1/2" = 1'-0" Except as noted April 1957  
COUNTY OF LOS ANGELES  
JOHN A. LAMBIE COUNTY ENGINEER  
PREPARED IN THE OFFICES  
OF  
**BARCLAY ENGINEERING CO.**  
Edward J. Pearson  
APPROVED BY *[Signature]* SANITATION ENGINEER  
APPROVED A.M. DAWN  
CHIEF ENGINEER OF SD SAN. DIST. NO. 13  
BY *[Signature]*  
CHECKED BY *[Signature]*  
OFFICE OF COUNTY ENGINEER RE. 16.31

25,787

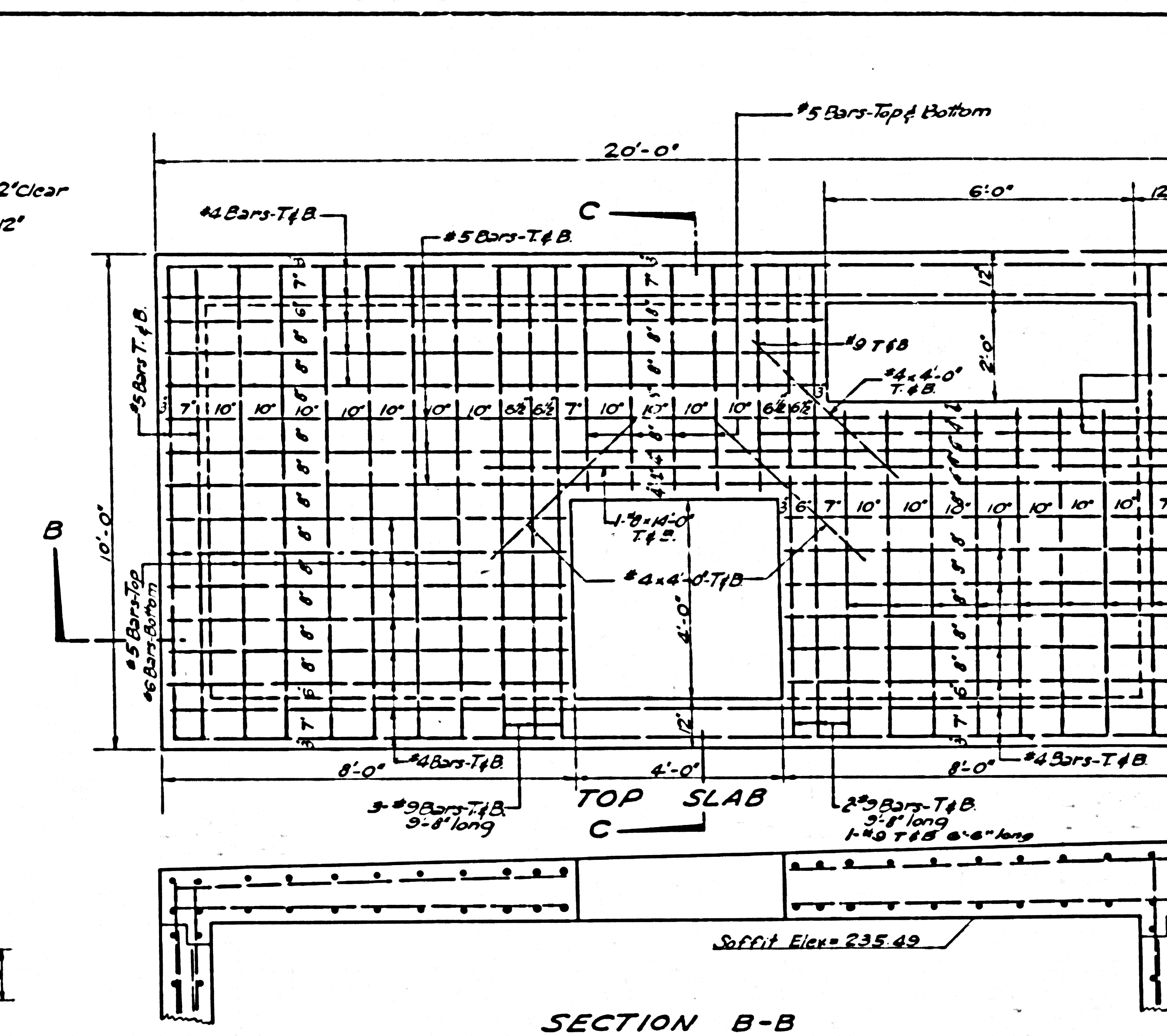






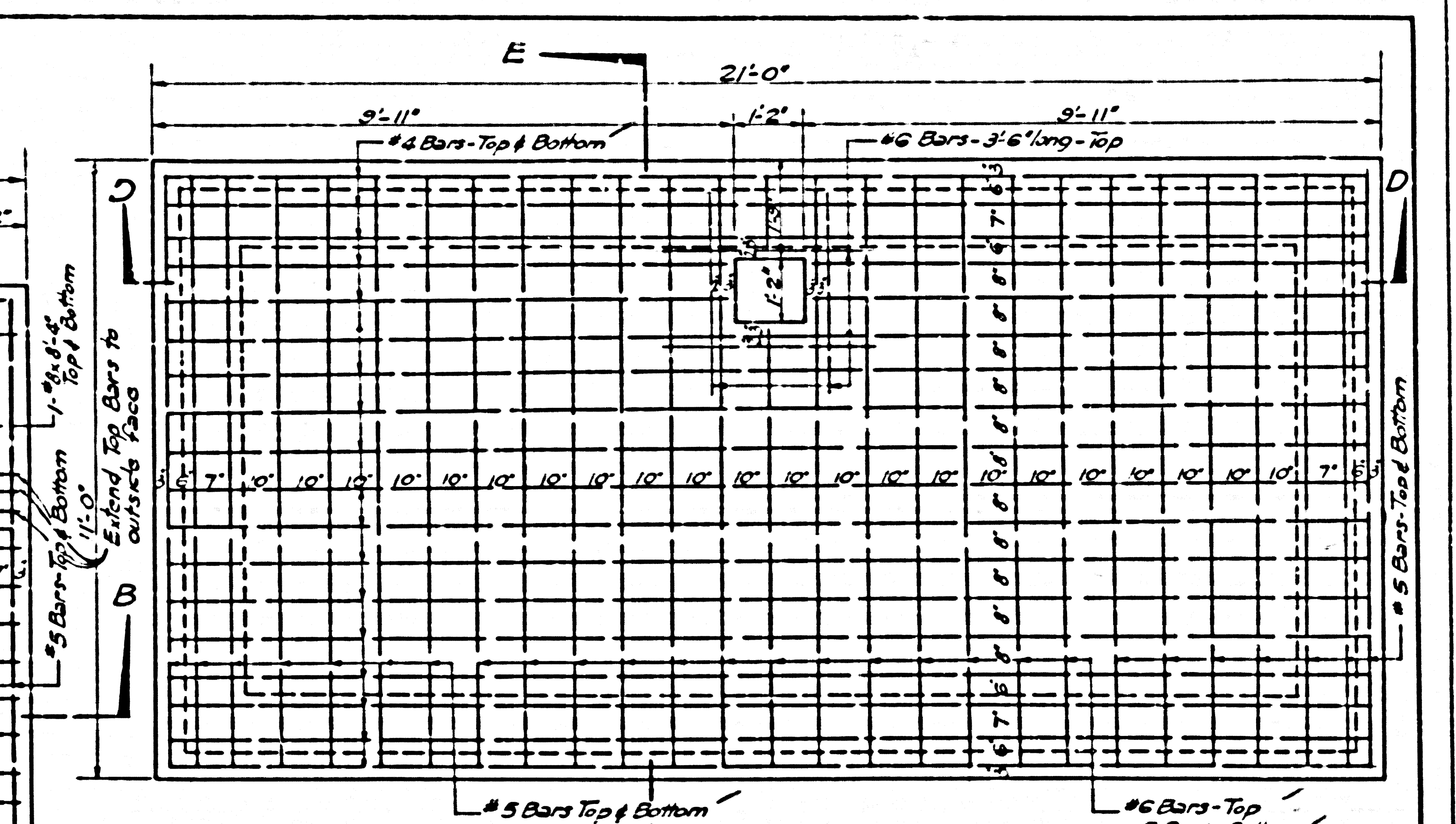


SECTION A-A

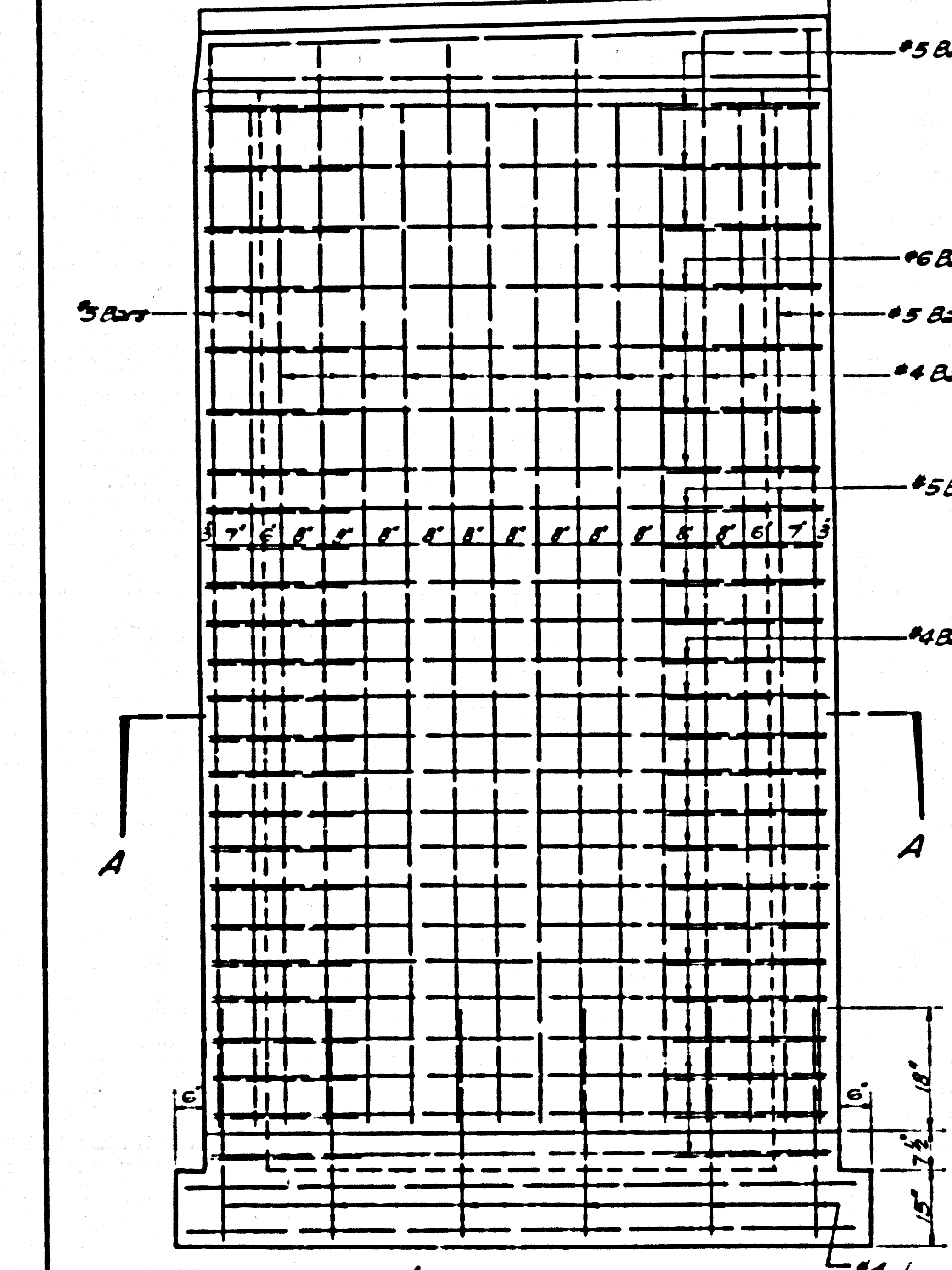


SECTION B-B

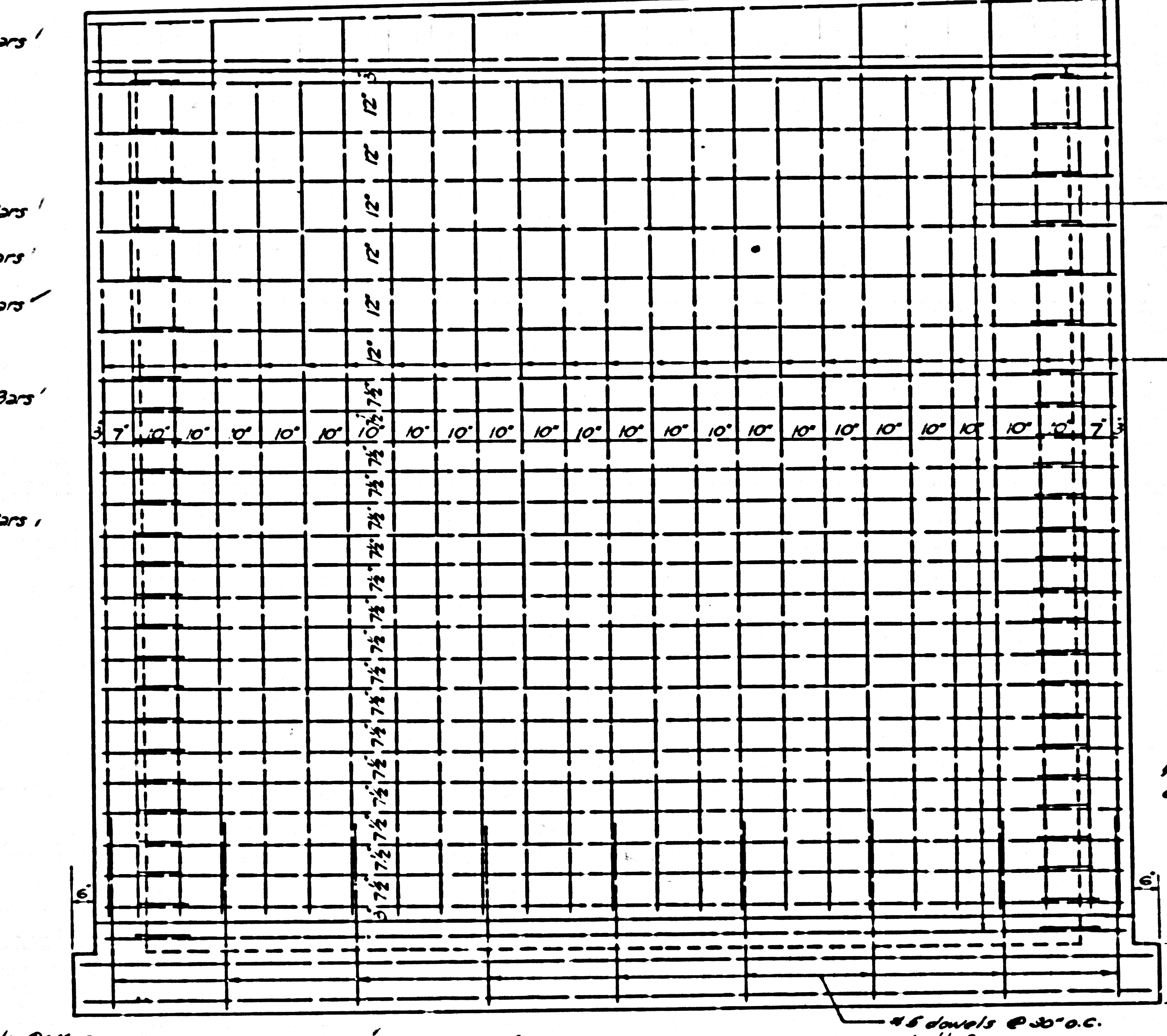
Note: Elevation of Top Varies, See Sheet 5.



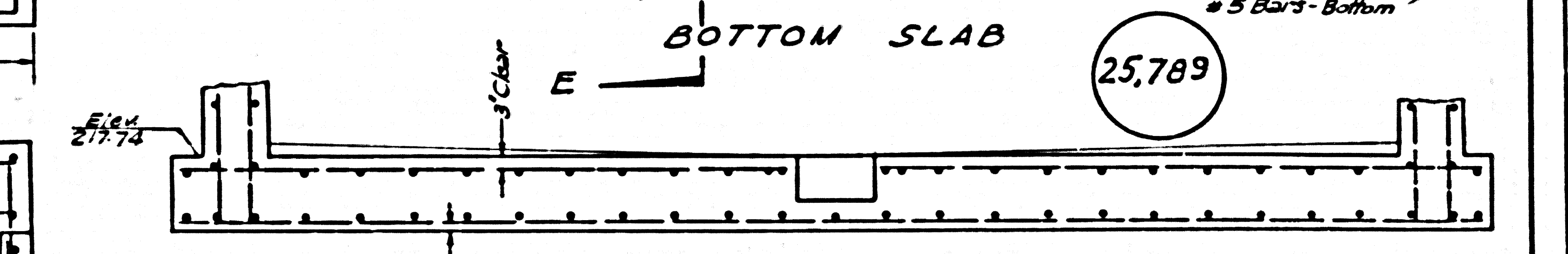
BOTTOM SLAB



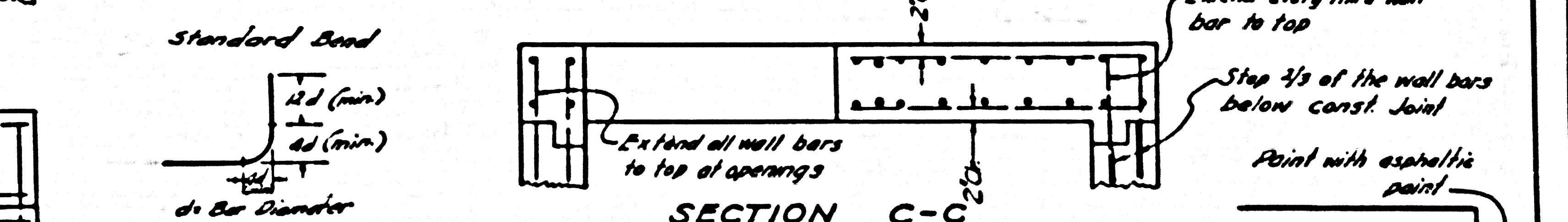
WALLS C & D REINF. DETAIL



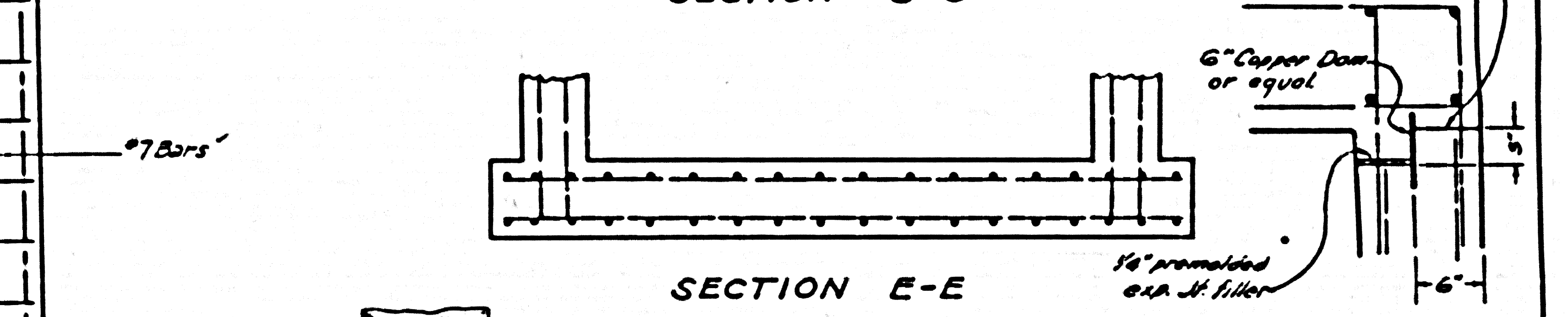
WALLS A & B REINF. DETAIL



SECTION D-D

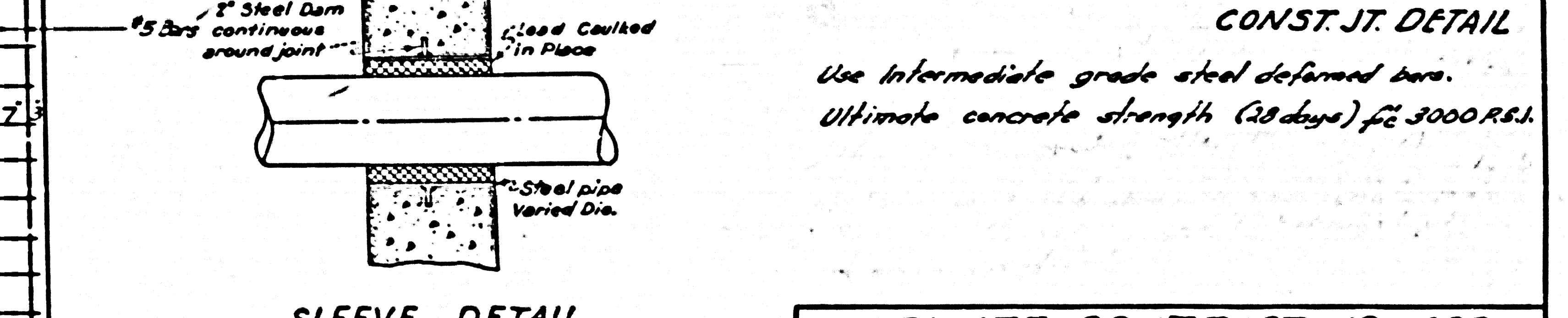


SECTION C-C

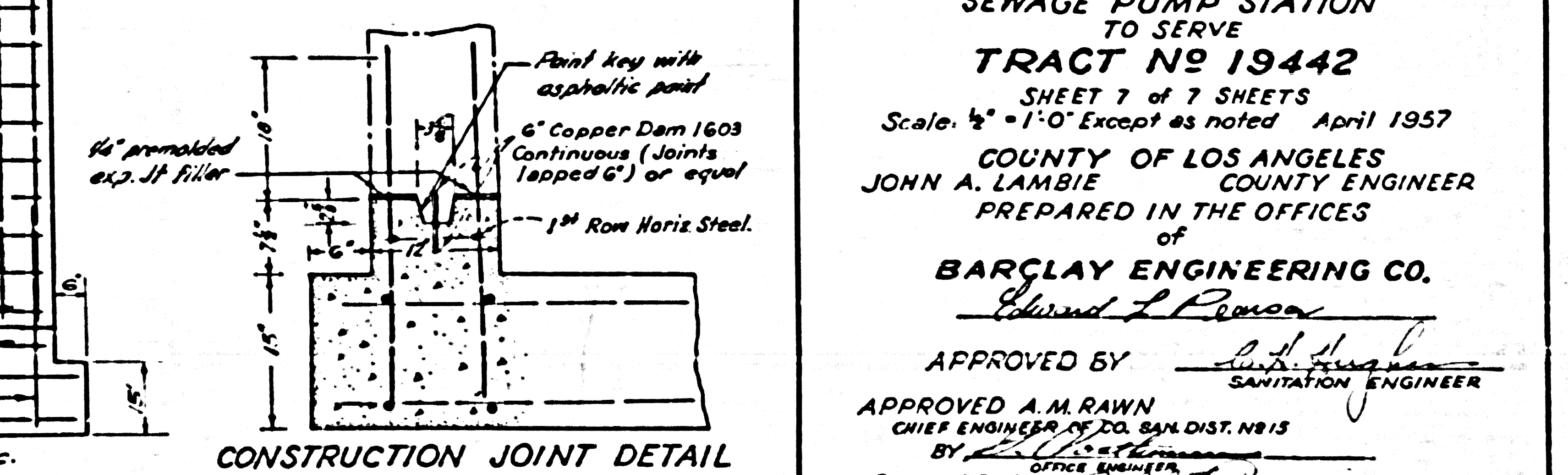


SECTION E-E

CONST. JT. DETAIL



SLEEVE DETAIL



CONSTRUCTION JOINT DETAIL

PRIVATE CONTRACT NO 4033  
 CONSTRUCTION PLANS FOR  
 SEWAGE PUMP STATION  
 TO SERVE  
 TRACT NO 19442  
 SHEET 7 of 7 SHEETS  
 Scale: 1/2" = 1'-0" Except as noted April 1957  
 COUNTY OF LOS ANGELES  
 JOHN A. LAMBIE COUNTY ENGINEER  
 PREPARED IN THE OFFICES  
 of  
 BARCLAY ENGINEERING CO.  
 Edward L. Rawson  
 APPROVED BY *[Signature]*  
 SANITATION ENGINEER  
 APPROVED A. M. RAWN  
 CHIEF ENGINEER OF CO. SAN. DIST. NO 15  
 BY *[Signature]*  
 OFFICE ENGINEER  
 CHECKED BY *[Signature]*  
 OFFICE OF COUNTY ENGINEER R.E. 2-27

P.C. 4033