

LOMITA BLDG. DIST. NO. 71

PROFILE ALIGNMENT AND GRADE OF SANITARY SEWERS TO BE CONSTRUCTED IN TRACT NO. 22524

P.C. 4034 PAGE 1
 (24,253)

PRIVATE CONTRACT NO. 4034

W.S. 20
 2 SHEETS, 3 PAGES
 SCALE: 1" = 40' HORIZ. 1" = 4' VERT. MAY 1956

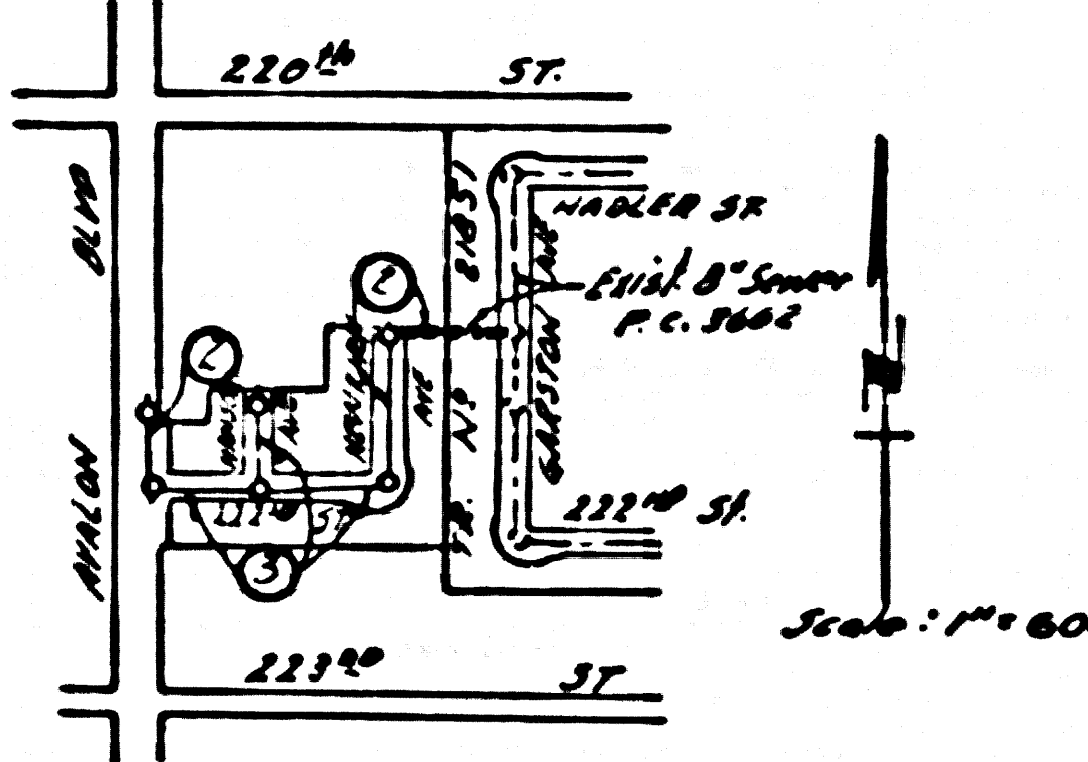
PREPARED IN THE OFFICES OF ROBERT G. SEBRING

BY: Robert G. Sebring REG. C.E. NO. 8103

FOR LEGEND SEE PLAN NO. S-A-64

B.M. 57 5107 El. 29.474 Spike & Lead in conc. pvt. 15' S. & 40' W. of E. Int. 223rd on Arden of S.W. Cor. of end of curv. pvt. @ 223rd St.

- PROVIDE STAKES ON THE PROPERTY LINE OR PROPERTY LINES PRODUCED AT RIGHT ANGLES TO THE SEWER LINE AT THE CENTER LINE OF EACH MANHOLE
- NO REPRESENTATIVE OF THE COUNTY ENGINEER HAS SURVEYED OR LAYED OUT ANY PORTION OF THE WORK
- THE OWNER OR HIS AUTHORIZED REPRESENTATIVE SHALL FURNISH THE COUNTY ENGINEER WITH GRADE SHEETS AND STATION FOR ALL HOUSE LATERALS AND T-Y BRANCHES AND SHALL PROVIDE STAKES FOR THEM AT THEIR PROPER LOCATIONS WITH STATION AND PLAINLY MARKED. ANY CHANGE IN LOCATION SHALL BE REQUESTED IN WRITING BY THE OWNER OR HIS REPRESENTATIVE
- NO REVISIONS SHALL BE MADE IN THESE PLANS WITHOUT THE APPROVAL OF THE COUNTY ENGINEER
1. USE STANDARD MANHOLE FRAMES AND COVERS, S-A-117, EXCEPT AS NOTED.
 2. USE STANDARD STRENGTH PIPE EXCEPT AS NOTED.
 3. USE CELESTE BENTONITE FOR ALL VITRIFIED CLAY PIPE JOINTS.
 4. RESURFACE ALL TRENCHES WITHIN PAVED AREAS TO MEET L.A. COUNTY ROAD DEPT. OR CALIF. STATE HIGHWAY DEPT. REQUIREMENTS IN ACCORDANCE WITH PERMITS.
 5. DIGGING FOUR FEET OF SEWER AT POINTS OF INTERFERENCE WITH PILES, S-A-119.
 6. HOUSE LATERALS TO BE CONSTRUCTED WITH INVERTS AT PROPERTY LINE 6" FEET BELOW CURB GRADE EXCEPT AS NOTED.
 7. ALL STRUCTURES SHALL BE BRICK SEWER STRUCTURES, S-A-184, EXCEPT AS NOTED.
 8. FOR ALLOWABLE LEAKAGE TEST USE FORMULA NO. 1, SPEC. SEC. 10.
 9. MANHOLE TOPS IN UNIMPROVED RIGHTS-OF-WAY TO BE 4" ABOVE FINISHED GRADE.
 10. The Private Engineer is to furnish the House Lateral depths of the property line below the top of curb elevation for each House Lateral, on the grade sheet.



INDEX MAP TRACT NO. 22524 P.C. 4034

COLLECT CHARGES AS INDICATED
 L. Cantor 7-27-56

NOTE: GRADES TO WHICH THIS IMPROVEMENT IS TO BE CONSTRUCTED ARE SHOWN ON PLANS AND MANHOLE GRADE POINTS FOR TOP OF CURB, CENTER LINE OF STREETS, OR CENTER LINE OF ALLEYS ARE SHOWN BY CIRCLES ON PROFILES. ALL POINTS BETWEEN DESIGNATED POINTS THE GRADE SHALL BE ESTABLISHED SO AS TO CONFORM TO A STRAIGHT LINE DRAWN BETWEEN SAID DESIGNATED POINTS

ELEVATIONS ARE IN FEET ABOVE U.S.C. & G.S. MEAN SEA LEVEL UNLESS OTHERWISE NOTED

THIS DRAWING AND THE DATA HEREON ARE HEREBY MADE A PART OF THE SPECIFICATIONS

WORK SHALL BE CONSTRUCTED ACCORDING TO SPECIFICATIONS ON FILE IN THE OFFICE OF THE COUNTY ENGINEER AND SHALL BE PROSECUTED UNDER THE SUPERVISION OF THE COUNTY ENGINEER

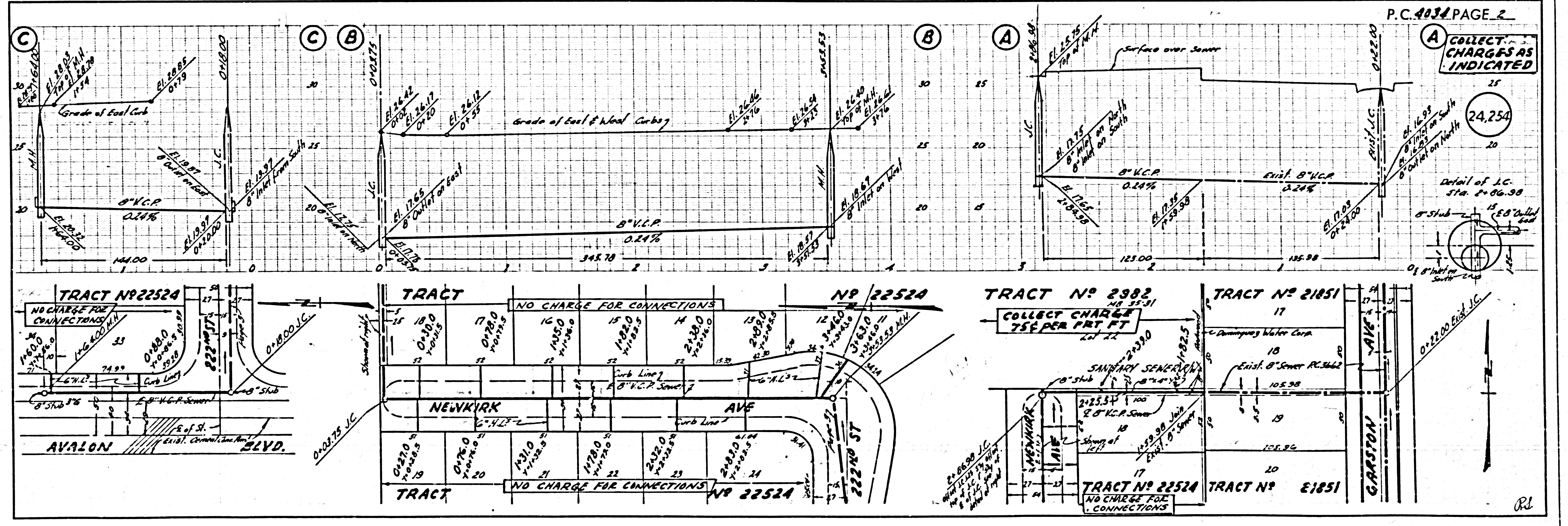
BEFORE WORK CAN BE STARTED, THE CONTRACTOR MUST OBTAIN A PERMIT TO EXCAVATE IN COUNTY STREETS FROM THE L.A. COUNTY ROAD DEPT., 100 W. 2ND ST. AND MAKE A DEPOSIT WITH THE COUNTY ENGINEER, ROOM 324 PAV. AMERICAN BLDG. 310 SO. BROADWAY SUFFICIENT TO COVER THE COST OF CONSTRUCTION INSPECTION AND RECORD PLANS

APPROVAL OF THIS PLAN BY THE COUNTY OF LOS ANGELES DOES NOT CONSTITUTE A REPRESENTATION AS TO THE ACCURACY OF THE LOCATION OR THE EXISTENCE OR NON-EXISTENCE OF ANY UNDERGROUND UTILITY PIPE, OR STRUCTURE WITHIN THE LIMITS OF THIS PROJECT. THIS NOTE APPLIES TO ALL PAGES

IF WORK IS TO BE DONE IN A STATE HIGHWAY, A PERMIT MUST BE OBTAINED FROM THE STATE OF CALIFORNIA, DIVISION OF HIGHWAYS, 138 SOUTH SPRING STREET.

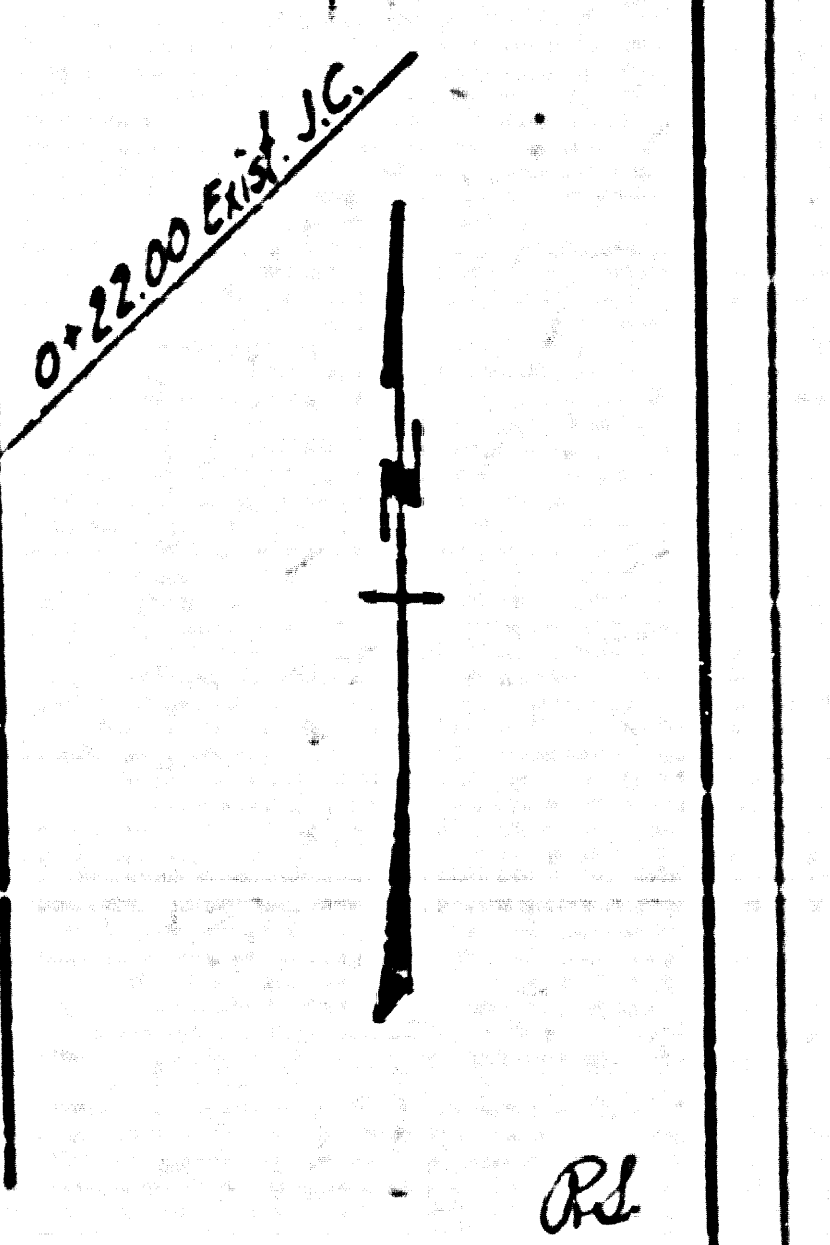
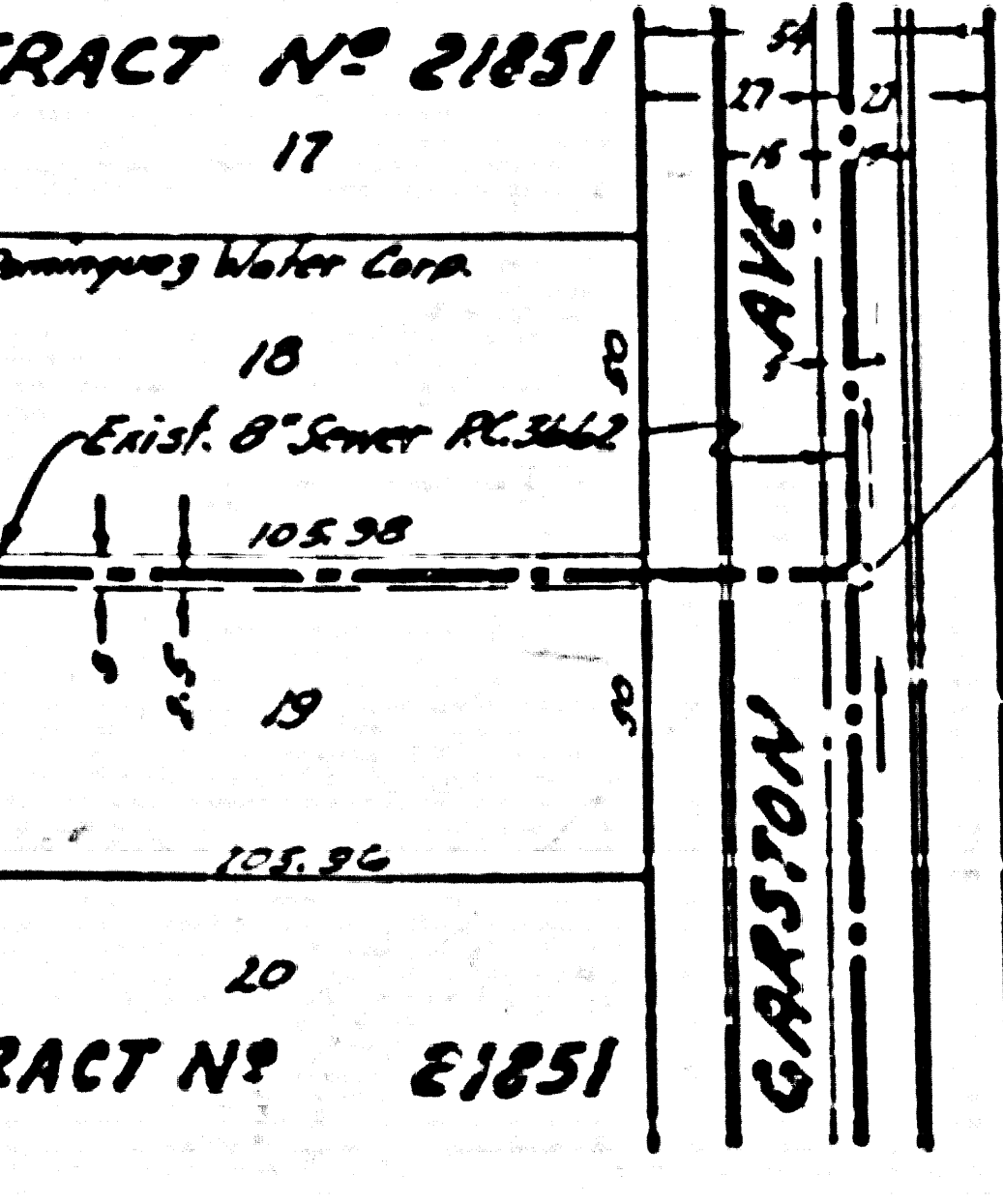
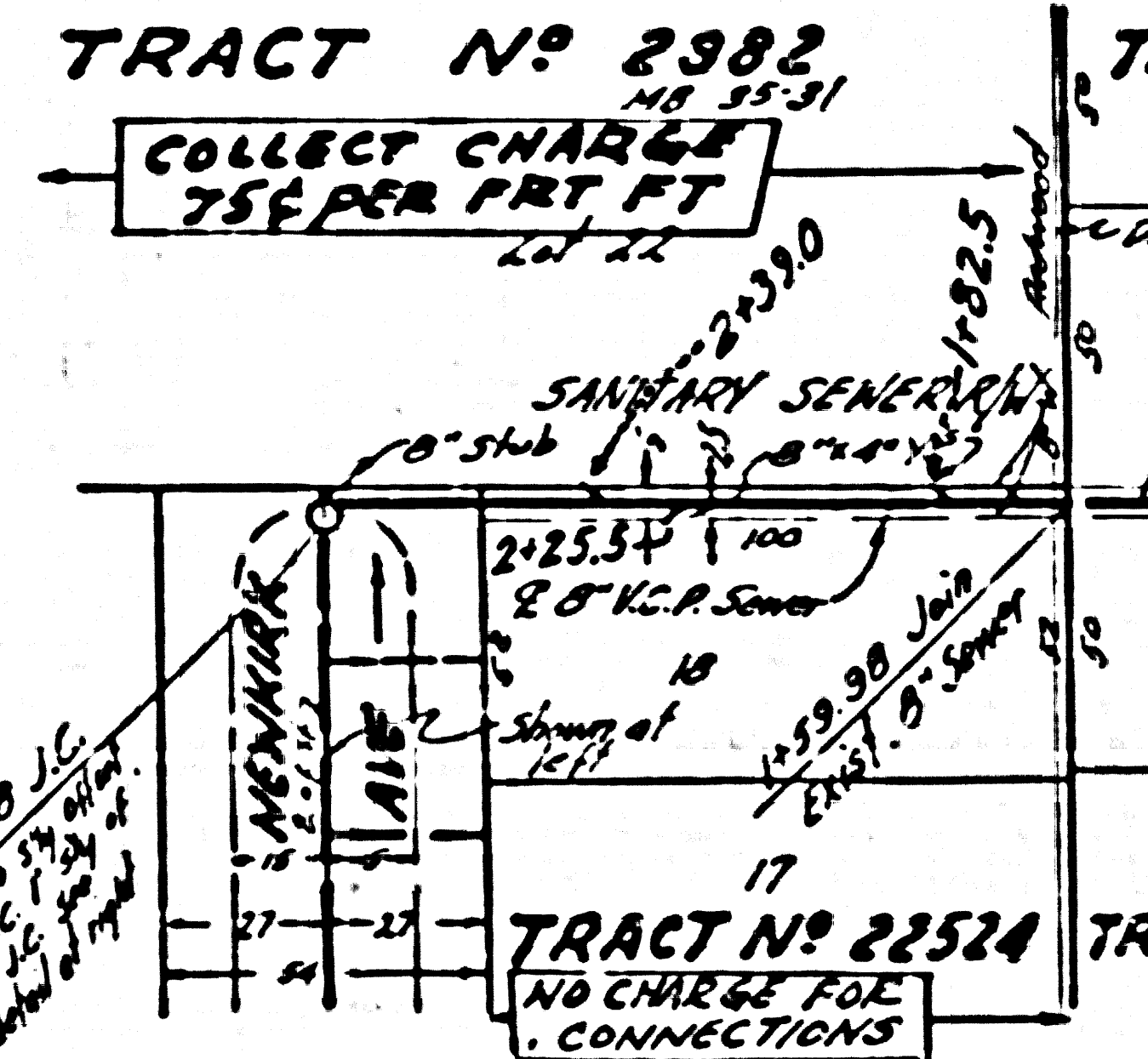
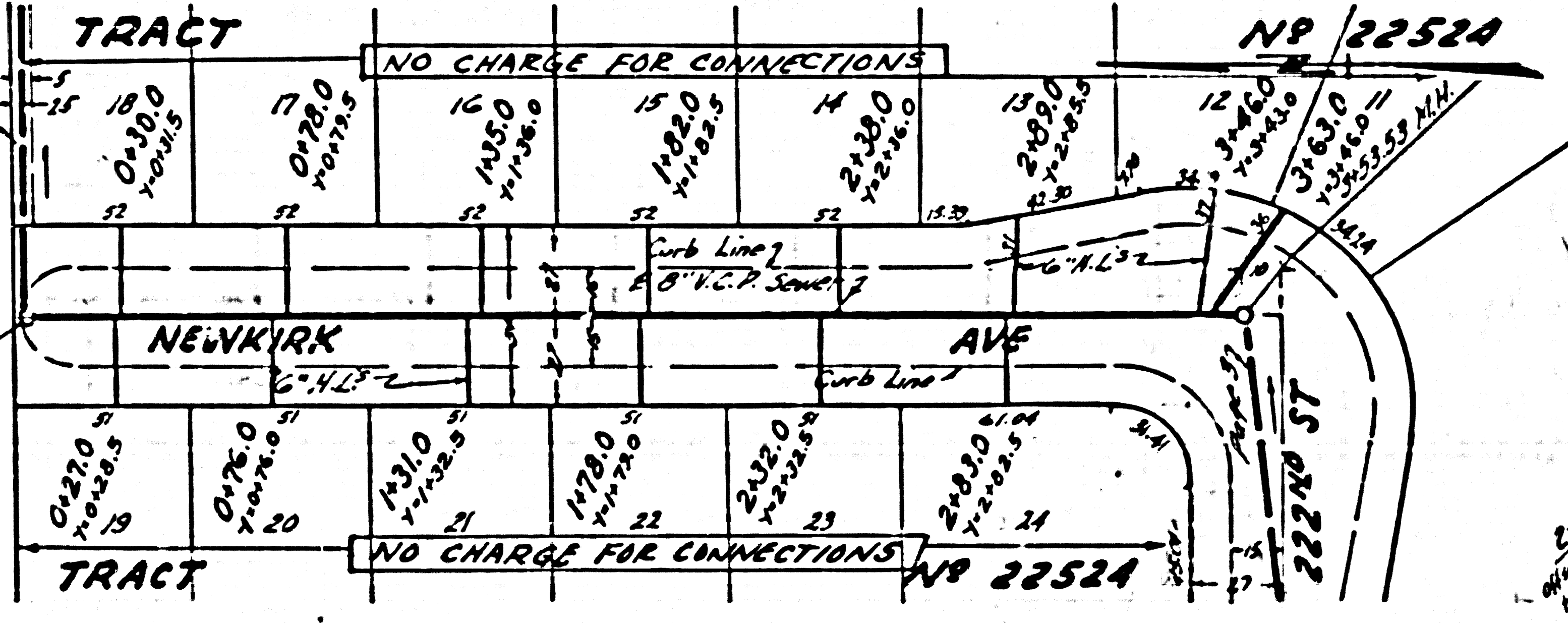
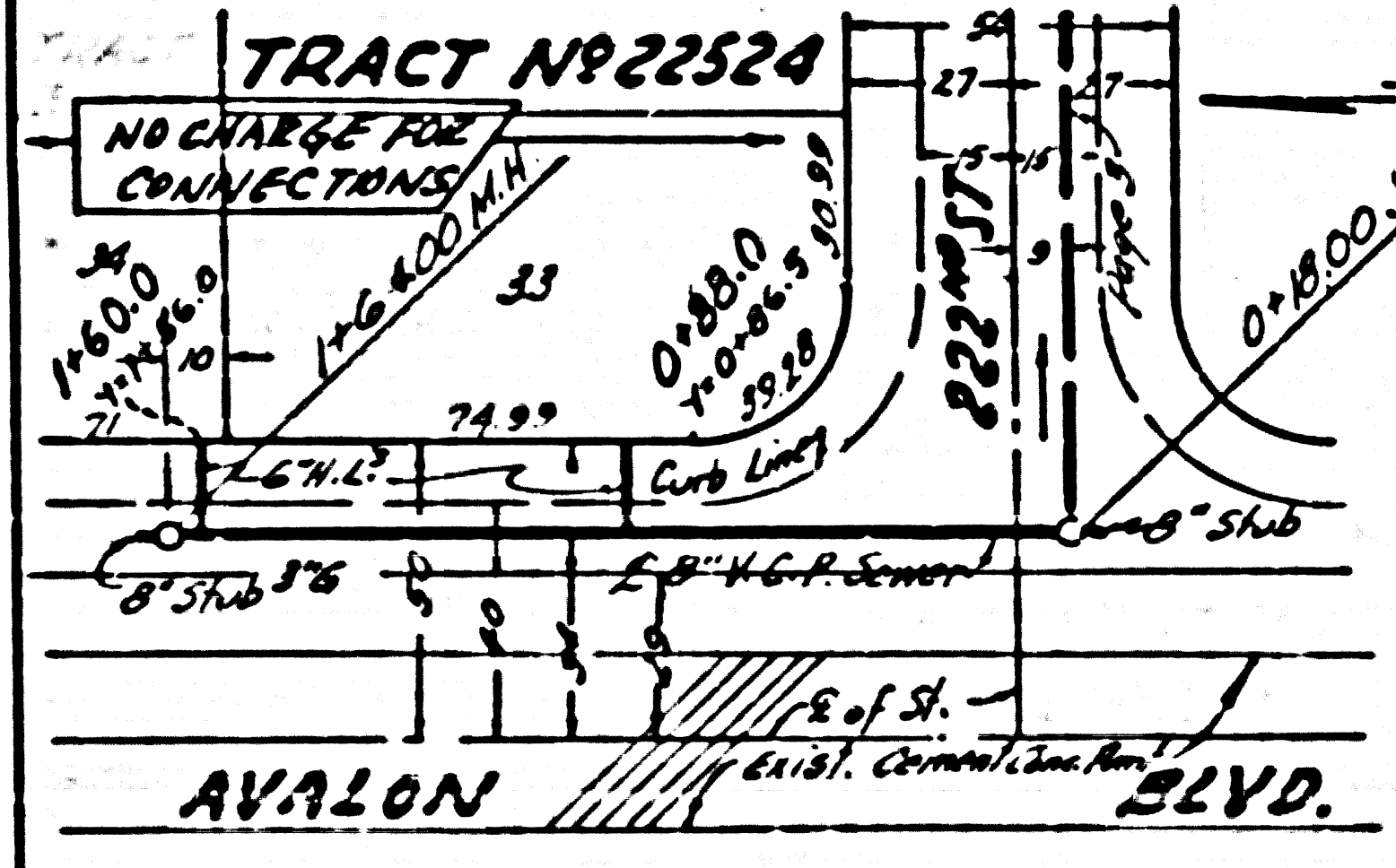
COUNTY OF LOS ANGELES, CALIFORNIA

APPROVED, JOHN A. LAMBE, COUNTY ENGINEER
 APPROVED, A. M. RAWN, CHIEF ENGINEER
 CO. SAN. DIST. NO. 8
 BY: A. P. Collins BY: G. W. ...
 SANITATION ENGINEER CHIEF ENGINEER
 CHECKED BY: P. S. ... 7-5-56
 OFFICE OF COUNTY ENGINEER, REG. C. E. NO. 7860

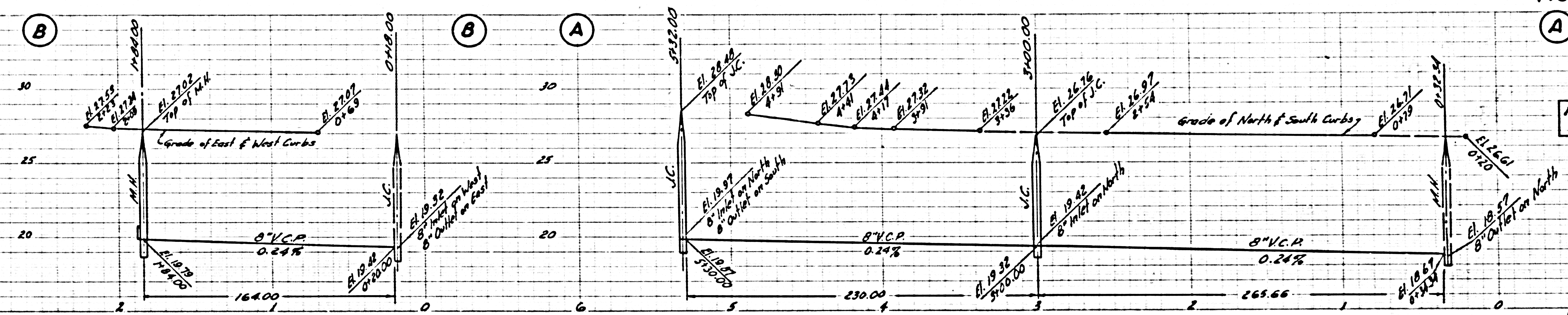


P.C. 4034 PAGE 2

COLLECT CHARGES AS INDICATED
 (24,254)

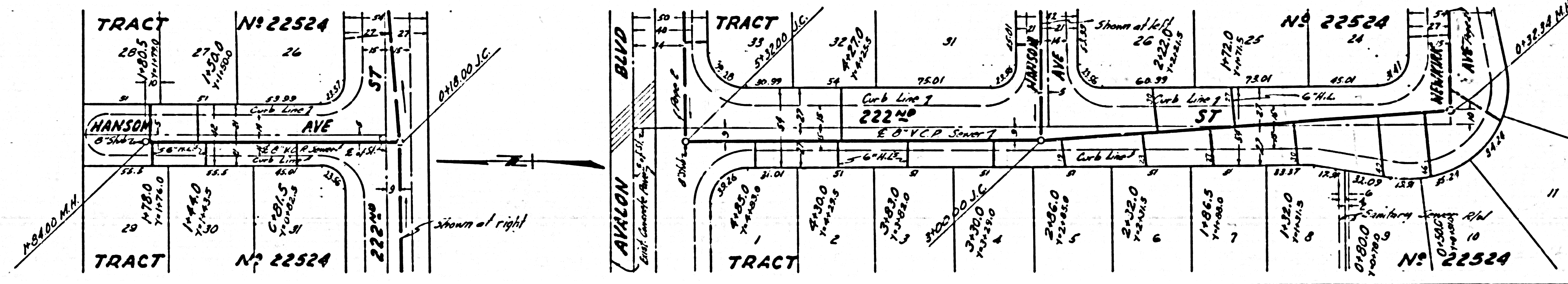


RL



24,255

NO CHARGE FOR CONNECTIONS



Rd.