

PUENTE BLDG. DIST. NO. 2

PROFILE ALIGNMENT AND GRADE OF **P.C. 4035**
SANITARY SEWERS PAGE 1

TO BE CONSTRUCTED IN **TRACT 22724** **25,550**

PRIVATE CONTRACT NO. 4035

W.S. 38
 5 SHEETS, 10 PAGES

SCALE: HORIZ. 1" = 40' VERT. 1" = 4'
 PREPARED IN THE OFFICES OF
NATIONAL ENGINEERING CO.

Edmund J. Esper
 REG. E. E. NO. 1285

FOR LEGEND SEE PLAN NO. S-A-64

- NOTES:**
- PROVIDE STAKES ON THE PROPERTY LINE OR PROPERTY LINES PRODUCED AT RIGHT ANGLES TO THE SEWER LINE AT THE CENTER LINE OF EACH MANHOLE.
 - NO REPRESENTATIVE OF THE COUNTY ENGINEER WILL SURVEY OR LAYOUT ANY PORTION OF THE WORK.
 - THE OWNER OR HIS AUTHORIZED REPRESENTATIVE SHALL FURNISH THE COUNTY ENGINEER WITH GRAB SHEETS AND STATION FOR ALL HOUSE LATERALS AND T BRANCHES AND SHALL PROVIDE STAKES FOR THEM AT THEIR PROPER LOCATIONS WITH STATIONING PLAINLY MARKED. ANY CHANGE IN LOCATION SHALL BE REQUESTED BY WRITING BY THE OWNER OR HIS REPRESENTATIVE.
 - NO REVISIONS SHALL BE MADE IN THESE PLANS WITHOUT THE APPROVAL OF THE COUNTY ENGINEER.
 - USE STANDARD MANHOLE FRAMES AND COVERS, S.A. 117, EXCEPT AS NOTED.
 - USE STANDARD STRENGTH PIPE EXCEPT AS NOTED.
 - USE CHINA MORTAR FOR ALL WITHIN CLAY PIPE JOINTS.
 - RESURFACE ALL T.P.C. WITHIN PAVED AREA TO MEET L.A. COUNTY ROAD DEPT. OR CALIF. STATE HIGHWAY DEPT. REQUIREMENTS IN ACCORDANCE WITH PERMITS.
 - INDICATE FOUR FEET OF SEWER AT POINTS OF INTERFERENCE WITH POLES, S.A. 172.
 - HOUSE LATERALS TO BE CONSTRUCTED WITH INVERTS AT PROPERTY LINE $\frac{1}{2}$ FEET BELOW CITY GRADE EXCEPT AS NOTED.
 - ALL STRUCTURES SHALL BE BRICK SEWER STRUCTURES, S.A. 104, EXCEPT AS NOTED.
 - FOR ALLOWABLE LEAKAGE TEST USE FORMULA NO. 1 SPEC. SEC. 54.
 - MANHOLE TOPS IN UNIMPROVED RIGHTS-OF-WAY TO BE 6" ABOVE FINISHED GRADE.
 - THE PROPERTY ENGINEER IS TO FURNISH THE HOUSE LATERAL DEPTH AT THE PROPERTY LINE BEYOND THE TOP OF CURB LENGTH FOR EACH HOUSE LATERAL, ON THE GRADE SHEET.

NOTE:
 THE CONTRACTOR SHALL NOTIFY THE CONSTRUCTION AND STORM DRAIN DIVISION BY TELEPHONE, MADISON 9-4747, EXT. 362, AT LEAST 24 HOURS BEFORE STARTING ANY WORK UNDER THIS CONTRACT.

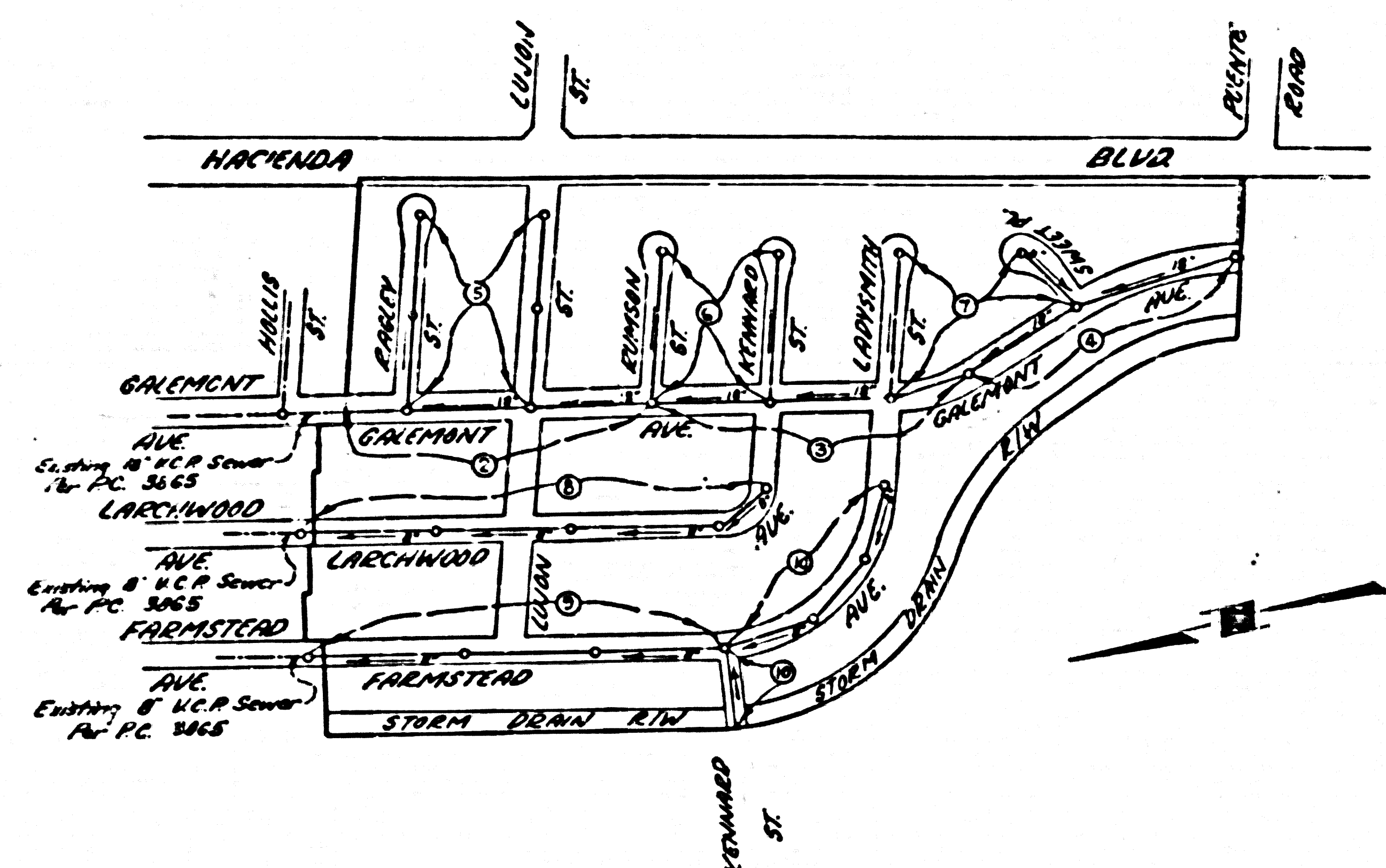
211 38-12 E1 = 331.566
 10' SURVEYOR MARK SET IN CORNER OF
 BELOW SURFACE, 30' WEST OF E OF
 ARCHMONT BLVD & 25' SOUTH OF RP

**NO CHARGE
 FOR CONNECTIONS**
L. Curtis 9-16-57

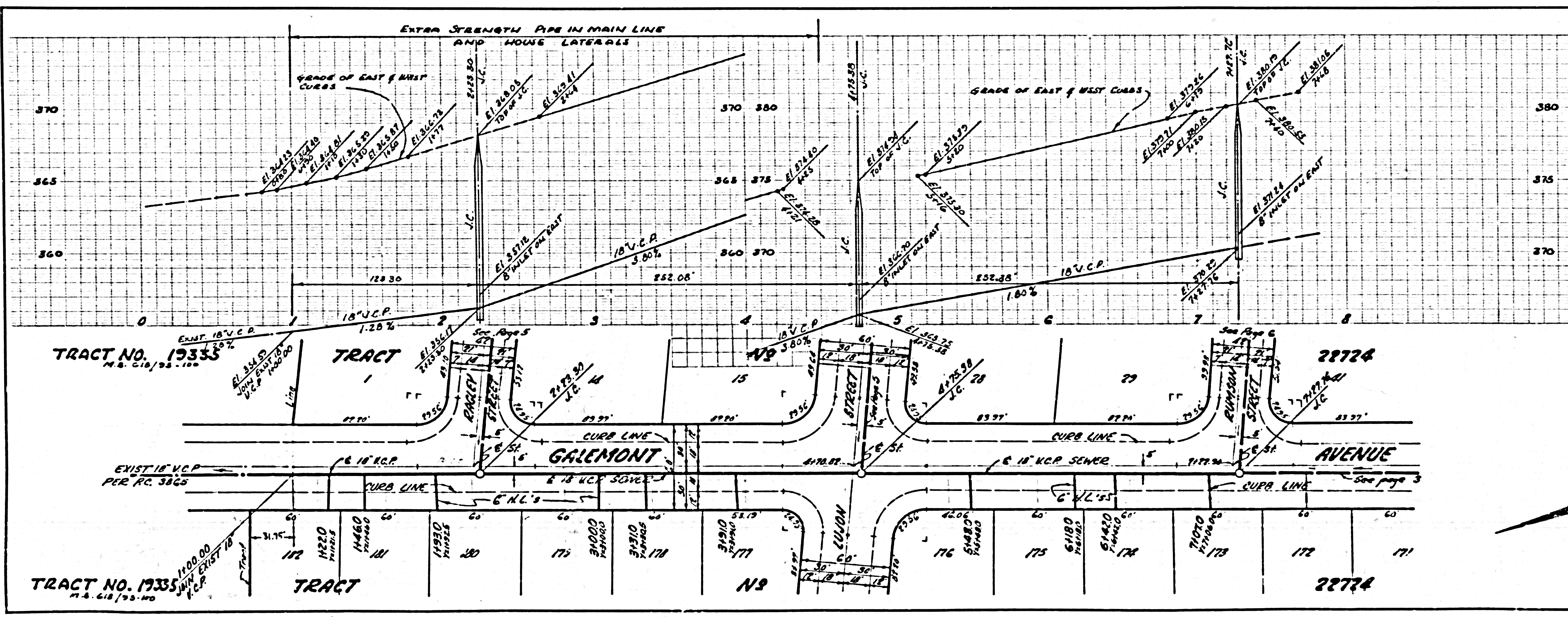
NOTE:
 GRADES TO WHICH THIS IMPROVEMENT IS TO BE CONSTRUCTED ARE SHOWN ON PLANS AND PROFILES. GRADE POINTS FOR TOP OF CURB CENTER LINE OF STREET, OR CENTER LINE OF ALLEYS ARE SHOWN BY LABELS ON PROFILES. AT ALL POINTS BETWEEN DESIGNATED POINTS THE GRADE SHALL BE ESTABLISHED SO AS TO CONFORM TO A STRAIGHT LINE BEYOND SAID DESIGNATED POINTS.
 ELEVATIONS ARE IN FEET ABOVE U.S.C. & G.S. MEAN SEA LEVEL. DATUM OF 1929.
 THIS DRAWING AND THE DATA HEREON ARE HEREBY MADE A PART OF THE SPECIFICATION.
 WORK SHALL BE CONSTRUCTED ACCORDING TO SPECIFICATIONS ON FILE IN THE OFFICE OF THE COUNTY ENGINEER AND SHALL BE PROSECUTED ONLY IN THE PRESENCE OF THE COUNTY ENGINEER.
 BEFORE WORK CAN BE STARTED, THE CONTRACTOR MUST OBTAIN A PERMIT TO EXCAVATE FROM THE COUNTY ENGINEER FROM THE L.A. COUNTY ROAD DEPT., 120 W. 5TH ST. AND MAKE A REPORT WITH THE COUNTY ENGINEER FROM 234 PAV. AMERICAN BUILDING, 335 SO. BROADWAY SUFFICIENT TO COVER THE COST OF CONSTRUCTION INSPECTION AND RECORD PLANS.
 APPROVAL OF THIS PLAN BY THE COUNTY OF LOS ANGELES DOES NOT CONSTITUTE A REPRESENTATION AS TO THE ACCURACY OF THE LOCATION OR OF THE EXISTENCE OR NON-EXISTENCE OF ANY UNDERGROUND UTILITY PIPE, OR STRUCTURE WITHIN THE LIMITS OF THE PROJECT. THIS NOTE APPLIES TO ALL PAGES.
 IF WORK IS TO BE DONE IN A STATE HIGHWAY, A PERMIT MUST BE OBTAINED FROM THE STATE OF CALIFORNIA, DIVISION OF HIGHWAYS, 128 SOUTH SPRING STREET.

COUNTY OF LOS ANGELES, CALIFORNIA

APPROVED, JOHN A. LAMBE, COUNTY ENGINEER
 APPROVED, A. M. BAWEL, CHIEF ENGINEER
 BY *N. P. Brumley* REG. SANITATION ENGINEER
 BY *M. J. Williams* OFFICE ENGINEER
 CHECKED BY *W. C. Quinn* 9-16-57
 OFFICE OF COUNTY ENGINEER, 212 E. 2ND ST.



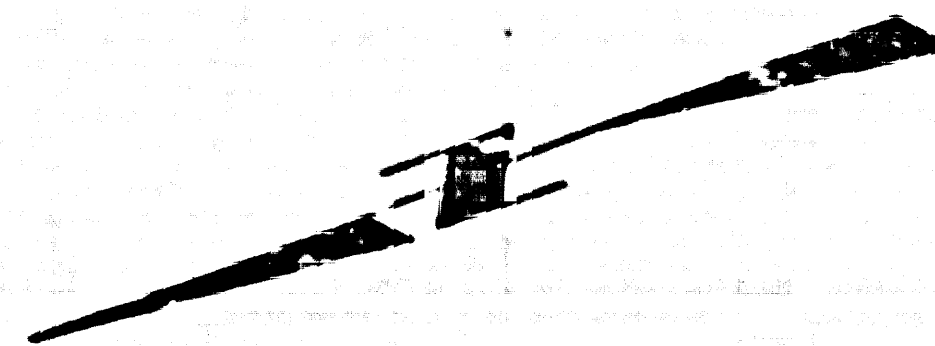
INDEX MAP
 SCALE 1" = 300'
 TRACT NO. 22724
 P.C. 4035



P.C. 4035 PAGE 2

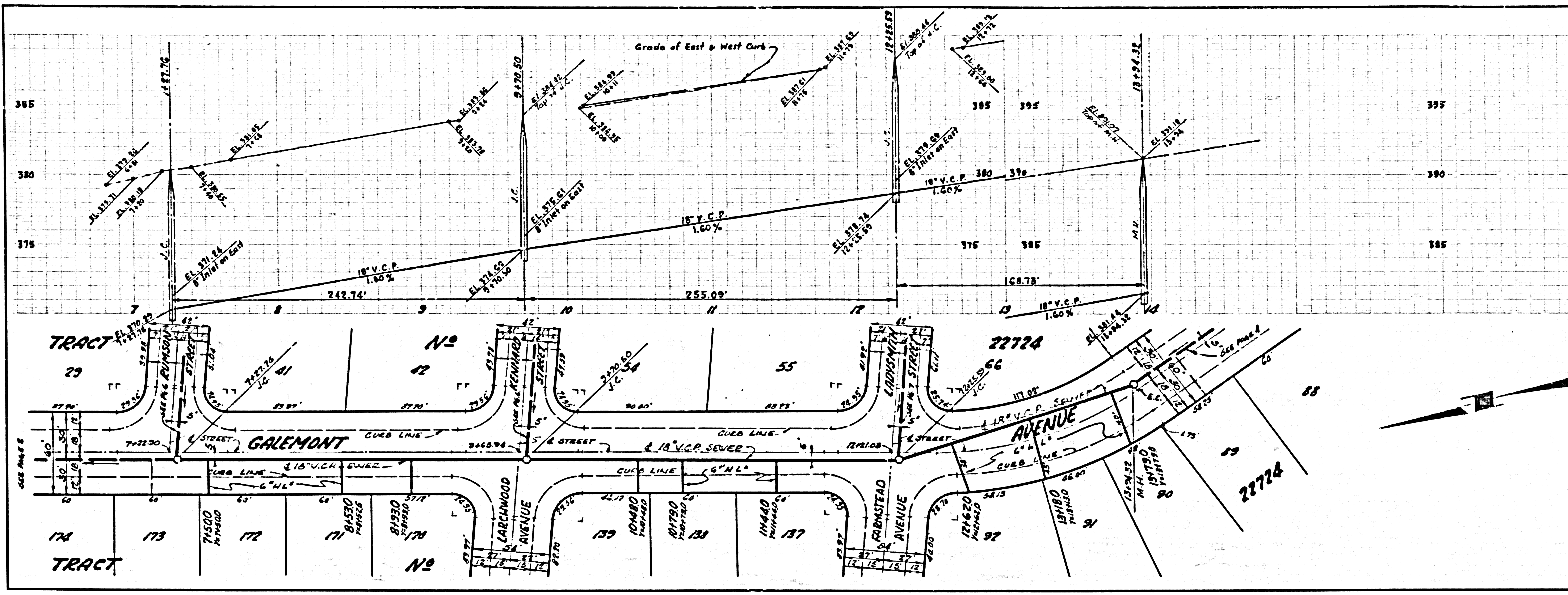
NO CHARGE FOR CONNECTIONS

25,551



NO CHARGE FOR CONNECTIONS

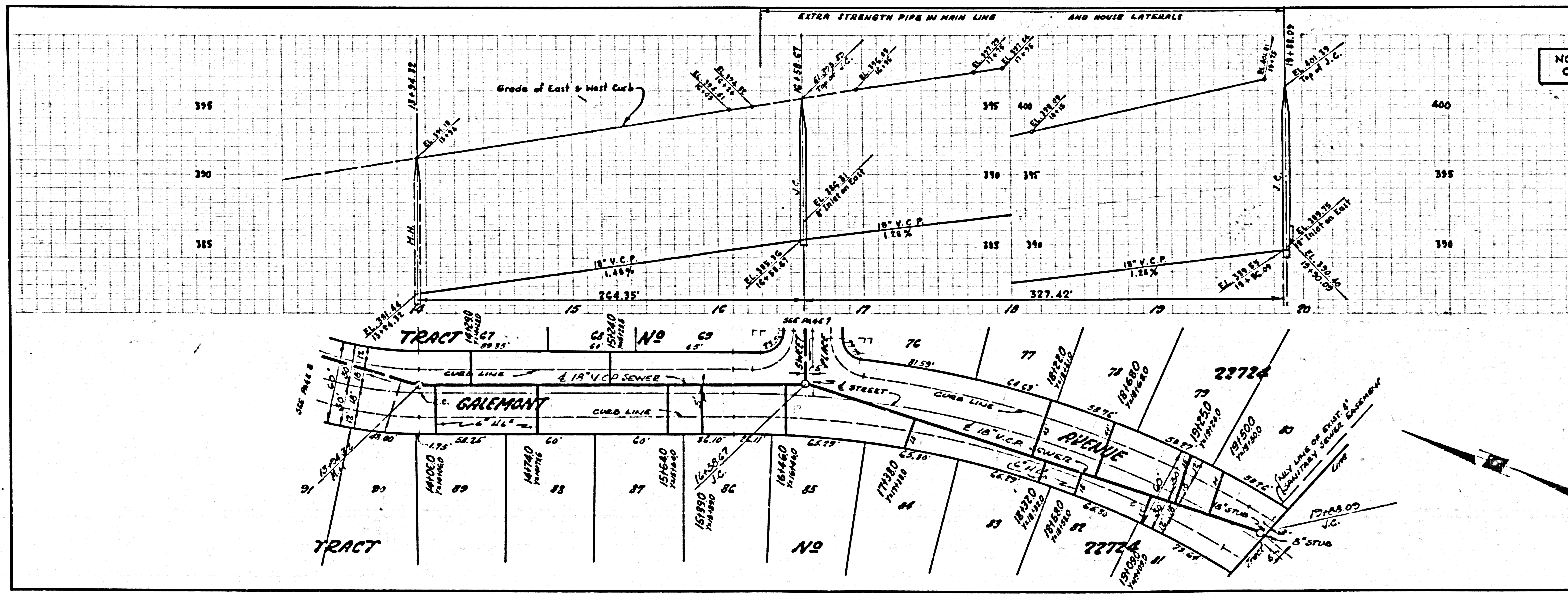
25,552



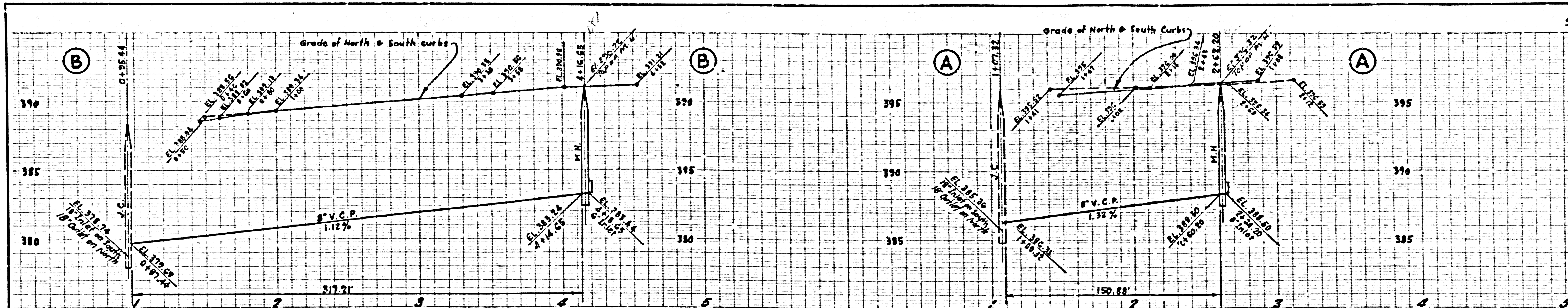
KS 9-13-37

NO CHARGE FOR CONNECTIONS

25,553

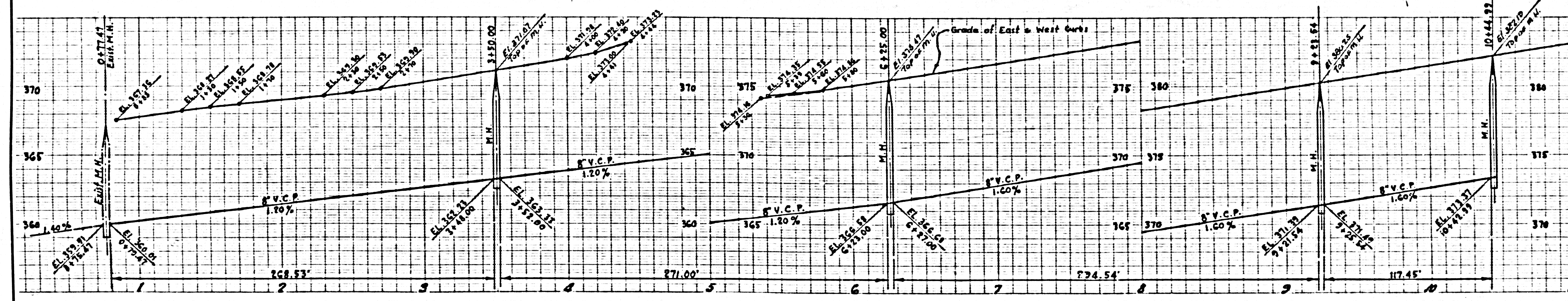
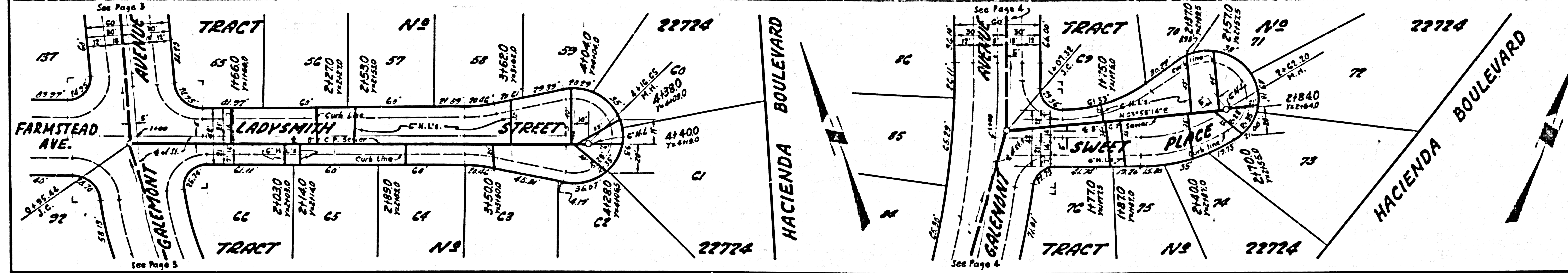


KS 9-13-37



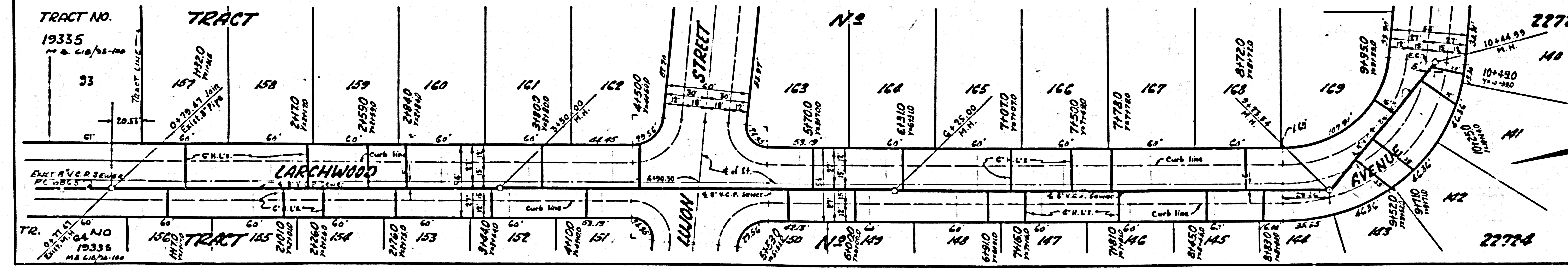
NO CHARGE FOR CONNECTIONS

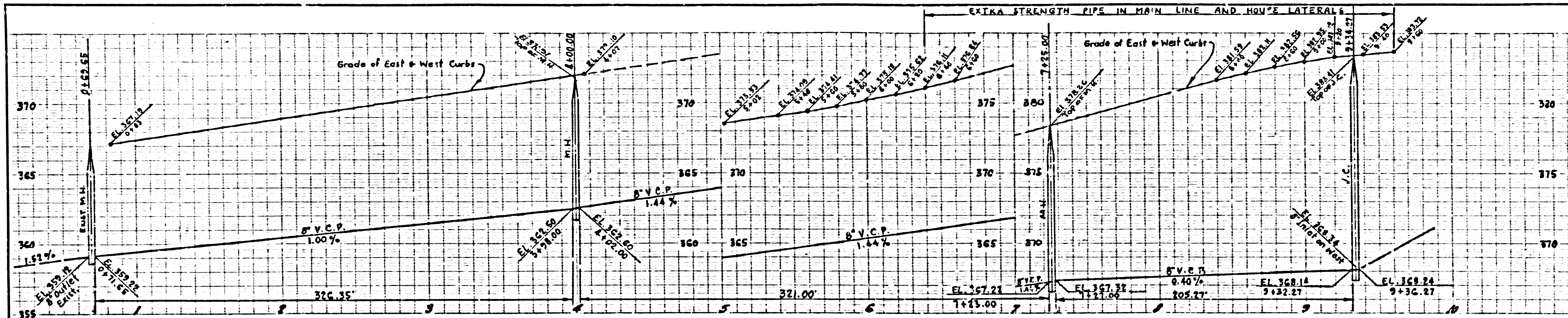
25,556



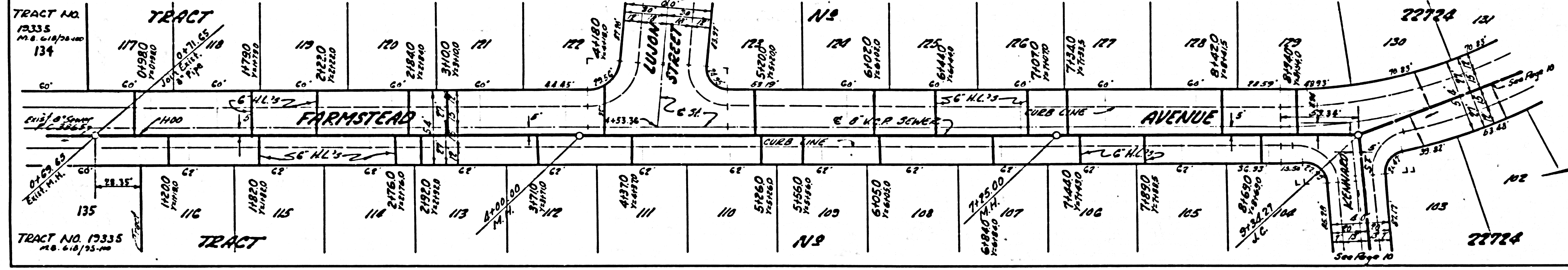
NO CHARGE FOR CONNECTIONS

25,557

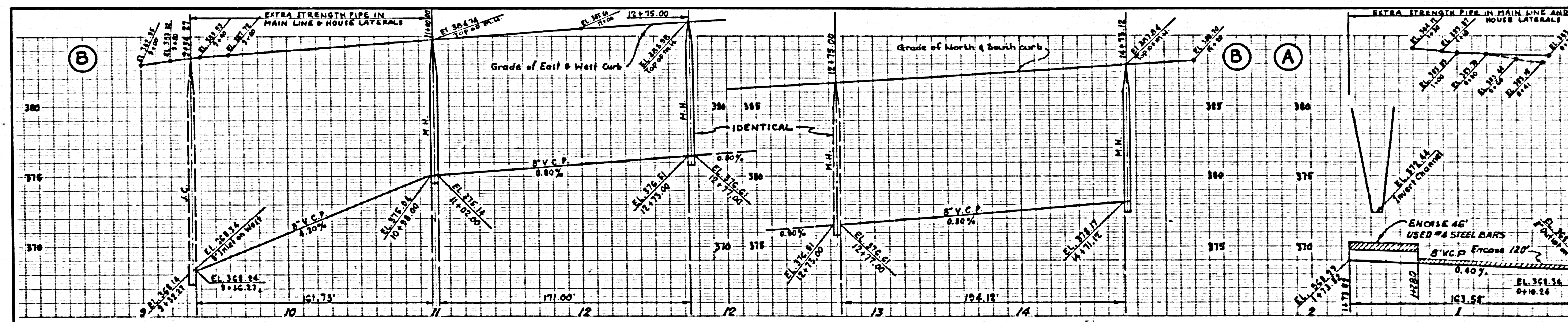




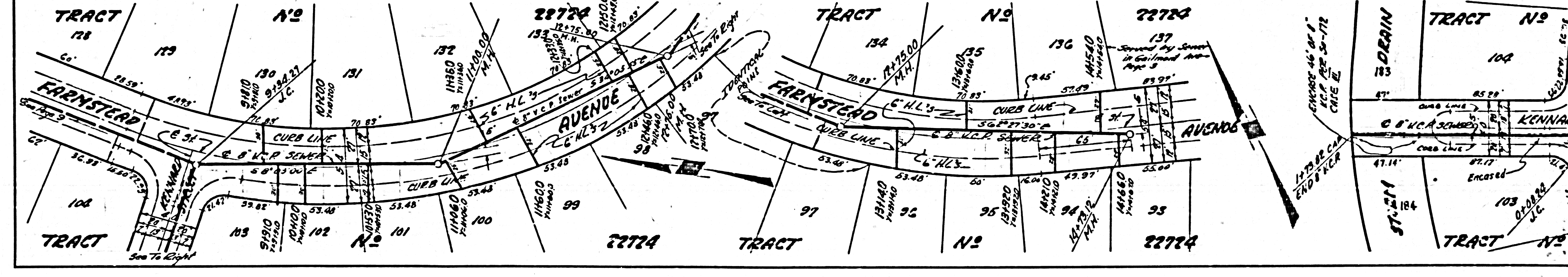
4035 PAGE 9
 NO CHARGE FOR CONNECTIONS
 25,558



6/3 9-13-37



4035 PAGE 10
 NO CHARGE FOR CONNECTIONS
 ISSUE NO PERMITS UNTIL MAIN LINE IS EXTENDED SEA
 25,559



6/3 9-13-37