

PUENTE BLDG. DIST. NO. 2

PROFILE ALIGNMENT AND GRADE OF P.C. 4037
 SANITARY SEWERS PAGE 1
 TO BE CONSTRUCTED IN
SUNKIST SHOPPING CENTER

PRIVATE CONTRACT NO. 4037

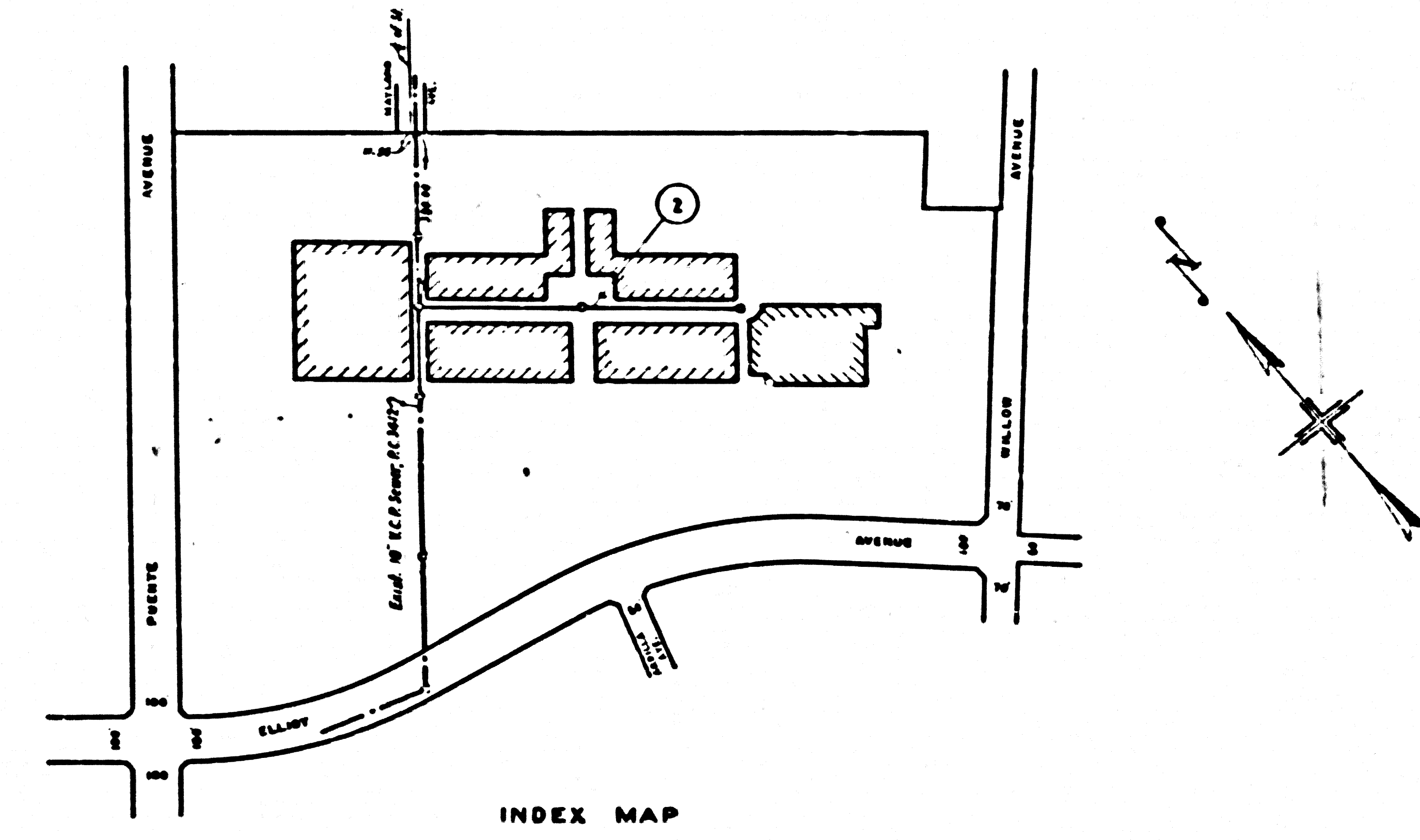
W.S. 46
 1 SHEET 2 PAGES
 SCALE: VERT. 1" = 4' HORIZ. 1" = 40'
 MARCH, 1956

23,476
 (2)

PREPARED IN THE OFFICES OF
TEGART ENGINEERS

FOR LEGEND SEE PLAN NO. S-A-64

- NOTES
- PROVIDE STAKES OF THE PROPERTY LINE OR PROPERTY LINES PRODUCED AT RIGHT ANGLES TO THE SEWER LINE AT THE CENTER LINE OF EACH MANHOLE.
 - NO REPRESENTATIVE OF THE COUNTY ENGINEER WILL SURVEY OR LAYOUT ANY PORTION OF THE WORK.
 - THE OWNER OR HIS AUTHORIZED REPRESENTATIVE SHALL FURNISH THE COUNTY ENGINEER WITH GRADE SHEETS AND STATION FOR ALL HOUSE LATERALS AND Y BRANCHES AND SHALL PROVIDE STAKES FOR THESE AT THEIR PROPER LOCATIONS WITH STATIONING AND PLAINLY MARKED. ANY CHANGE IN LOCATION SHALL BE REQUESTED IN WRITING BY THE OWNER OR HIS REPRESENTATIVE.
 - NO REVISIONS SHALL BE MADE IN THESE PLANS WITHOUT THE APPROVAL OF THE COUNTY ENGINEER.
 - USE STANDARD MANHOLE FRAMES AND COVERS, S.A. 117, EXCEPT AS NOTED.
 - USE STANDARD STRENGTH PIPE EXCEPT AS NOTED.
 - USE CEMENT MORTAR FOR ALL VITRIFIED CLAY PIPE JOINTS.
 - RESURFACE ALL TRENCH WITH PAVED AREA TO MEET L.A. COUNTY ROAD DEPT. OR CALIF. STATE HIGHWAY DEPT. REQUIREMENTS IN ACCORDANCE WITH PERMITS.
 - INDICATE FOUR FEET OF SEWER AT POINTS OF INTERFERENCE WITH POLES, S.A. 119.
 - ALL STRUCTURES SHALL BE BRICK SEWER STRUCTURE, S.A. 104, EXCEPT AS NOTED.
 - FOR ALLOWABLE LEAKAGE TEST USE FORMULA NO. 1 SPEC. 1, SEC. 54.
 - MANHOLE TOPS IN UNIMPROVED PORTIONS OF WAY TO BE LEVEL WITH FINISHED GRADE.



INDEX MAP
 P.C. 4037
 SCALE: 1" = 300'

SHEET	PAGES
1	2

NO CHARGE FOR CONNECTIONS
 BY Order 9-5-56

B.M. 56-1085 E.L. 314-130
 Lead and Brass Nail in S.E. Corner of Conc. Base of Pump Motor 45' E. S. of E. of South St. & 85' N. W. of E. of Puente Ave.

checked 9-24-56 *McLaren*

NOTE: GRADES TO WHICH THIS IMPROVEMENT IS TO BE CONSTRUCTED ARE SHOWN ON PLANS AND PROFILES. GRADE POINTS FOR TOP OF CURB, CENTER LINE OF STREETS, OR CENTER LINE OF ALLEYS ARE SHOWN BY CIRCLES ON PROFILES AT ALL POINTS BETWEEN REGULARLY SPACED POINTS. THE GRADE SHALL BE ESTABLISHED SO AS TO CONFORM TO A STRAIGHT LINE DRAWN BETWEEN SAID SPACED POINTS.

LEVEL POINTS ARE IN FEET ABOVE U.S. MEAN SEA LEVEL DATUM (AS OF 1929).

THIS DRAWING AND THE DATA HEREON ARE HEREBY MADE A PART OF THE SPECIFICATIONS.

WORK SHALL BE CONSTRUCTED ACCORDING TO SPECIFICATIONS ON FILE IN THE OFFICE OF THE COUNTY ENGINEER AND SHALL BE PROSECUTED ONLY IN THE PRESENCE OF THE COUNTY ENGINEER.

BEFORE WORK CAN BE STARTED, THE CONTRACTOR MUST OBTAIN A PERMIT TO EXCAVATE IN COUNTY STREETS FROM THE L.A. COUNTY ROAD DEPT. AND MAKE A REPORT WITH THE COUNTY ENGINEER, ROOM 324 MAIN AMERICAN BUILDING, 253 SO. BROADWAY, SUFFICIENT TO COVER THE COST OF CONSTRUCTION INSPECTION AND RECORD PLANS.

APPROVAL OF THIS PLAN BY THE COUNTY OF LOS ANGELES DOES NOT CONSTITUTE A REPRESENTATION AS TO THE ACCURACY OF THE LOCATION OF OR THE EXISTENCE OR NON-EXISTENCE OF ANY UNDERGROUND UTILITY PIPE, OR STRUCTURE WITHIN THE LIMITS OF THIS PROJECT. THE NOTE APPLIES TO ALL PAGES.

IF WORK IS TO BE DONE ON A STATE HIGHWAY, A PERMIT MUST BE OBTAINED FROM THE STATE OF CALIFORNIA, DIVISION OF HIGHWAYS, 128 SOUTH SPRING STREET.

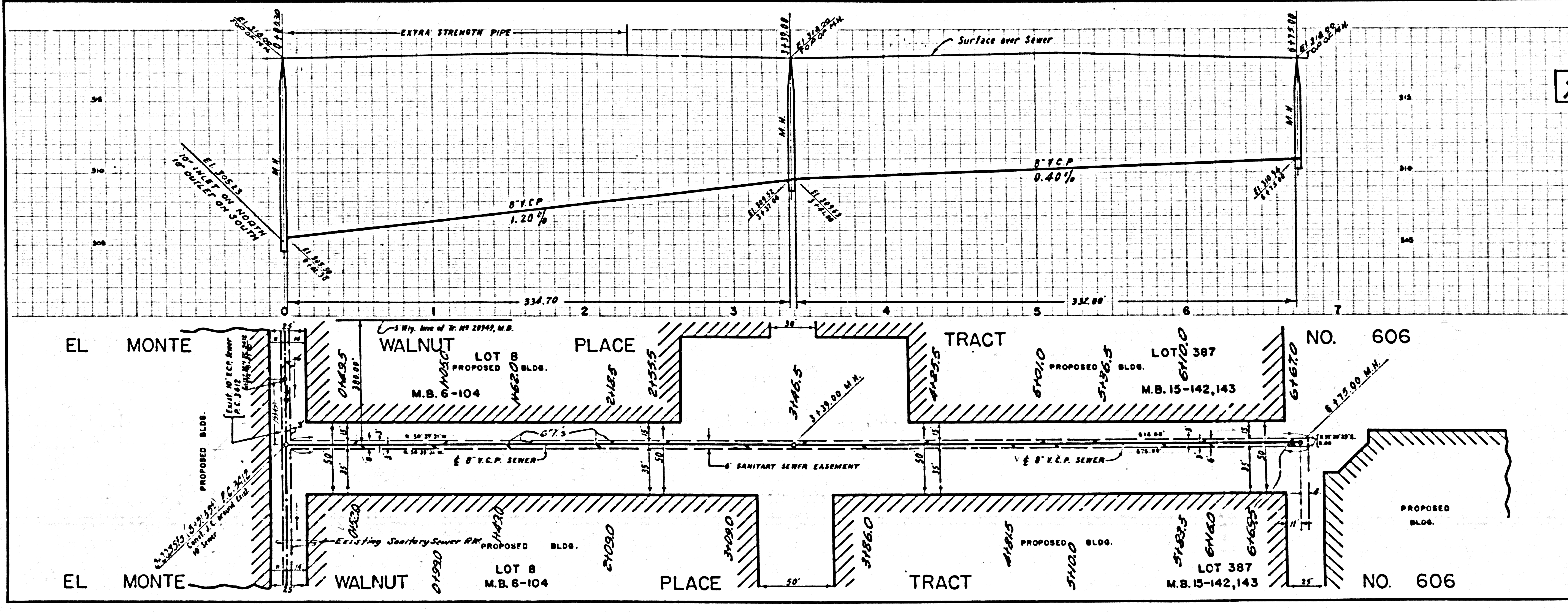
COUNTY OF LOS ANGELES, CALIFORNIA

APPROVED, JOHN A. LAMBE, COUNTY ENGINEER
 APPROVED, A. M. BAWN, CHIEF ENGINEER
 COUNTY SANITATION DIST. NO. 15

BY *A.P. Collins* SANITATION ENGINEER
 BY *J.W. Matthews* OFFICE ENGINEER

CHECKED BY *P. S. 56*
 OFFICE OF COUNTY ENGINEER, BUL. C. & NO. 7862

P.C. 4037 PAGE 2



NO CHARGE FOR CONNECTIONS

23,477

P.C. 4037

checked 9-24-56 *McLaren*