

BM 9-10, Elev 43.983 ± 5 FB 1375 Pp 14
 Palo Verde Ave. & Del Amo Blvd. SW Cor.
 County Surveyor Monument with CI cover

SHEETS	PAGES
1	2

"NO CHARGE
 FOR CONNECTIONS"
Elk Onda 7-17-56

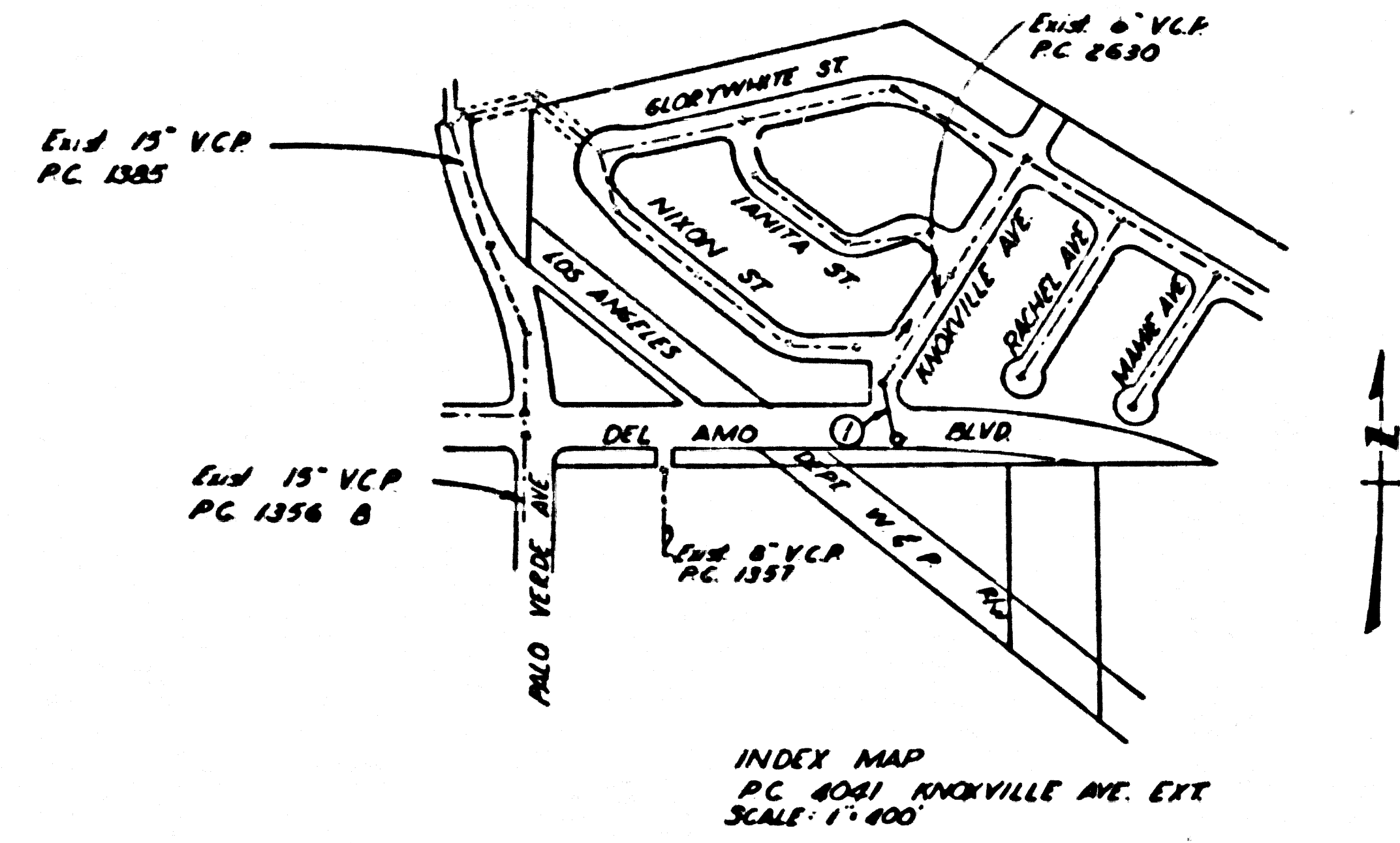
BELFLOWER BLDG. DIST. NO. 4

- NOTE:
 PROPERTY STAKES ON THE PROPERTY LINE OR PROPERTY LINES PRODUCED AT RIGHT ANGLES TO THE SEWER LINE AT THE LINDER LINE OF EACH ALIQUOT.
 NO REPRESENTATIVE OF THE COUNTY ENGINEER WILL SURVEY OR LAYOUT ANY PORTION OF THE WORK.
 THE OWNER OR HIS AUTHORIZED REPRESENTATIVE SHALL FURNISH THE COUNTY ENGINEER WITH GRADE SHEETS AND STATIONING FOR ALL HOUSE LATERALS AND T. MARKINGS AND SHALL PROVIDE STAKES FOR THEM AT THEIR PROPER LOCATIONS WITH STATIONING PLAINLY MARKED. ANY CHANGE IN LOCATION SHALL BE REQUESTED IN WRITING BY THE OWNER OR HIS REPRESENTATIVE.
 NO REVISIONS SHALL BE MADE IN THESE PLANS WITHOUT THE APPROVAL OF THE COUNTY ENGINEER.
- USE STANDARD MANHOLE FRAMES AND COVERS, S.A. 117, EXCEPT AS NOTED.
 - USE STANDARD STRENGTH PIPE EXCEPT AS NOTED.
 - USE JIBBY COMPRESSOR FOR ALL VITRIFIED CLAY PIPE JOINTS.
 - RESURFACE ALL TRENCHES WITHIN PAVED AREA TO MEET L. A. COUNTY ROAD DEPT., OR L.A.M. STATE HIGHWAY DEPT. REQUIREMENTS IN ACCORDANCE WITH PERMITS.
 - INDICATE FOUR FEET OF SEWER AT POINTS OF INTERFERENCE WITH POLES, S.A. 119.
 - HOUSE LATERALS TO BE CONSTRUCTED WITH INVERTS AT PROPERTY LINE $\frac{1}{8}$ FT. BELOW CURB GRADE EXCEPT AS NOTED.
 - ALL STRUCTURES SHALL BE BRICK SEWER STRUCTURES, S.A. 116, EXCEPT AS NOTED.
 - FOR ALLOWABLE LEAKAGE TEST USE FORMULA NO. $\frac{1}{8}$ SPEC. SEC. 56.
 - MANHOLE TOPS IN UNIMPROVED RIGHTS-OF-WAY TO BE 6" ABOVE FINISHED GRADE.
 - THE PRIVATE ENGINEER IS TO FURNISH THE HOUSE LATERAL DEPTH AT THE PROPERTY LINE BELOW THE TOP OF CURB ELEVATION FOR EACH HOUSE LATERAL, ON THE GRADE SHEET.

PROFILE ALIGNMENT AND GRADE OF P.C. 4041
 SANITARY SEWERS PAGE 1
 TO BE CONSTRUCTED IN
 KNOXVILLE AVENUE EXTENSION

PRIVATE CONTRACT NO. 4041
 W.S. 31
 1 SHEETS; 2 PAGES
 SCALE: $\frac{1}{4}$ " = 1'-0" MAY 1956
 PREPARED IN THE OFFICES OF
 Clarence A. Magnuson
 BY: *Clarence A. Magnuson*
 REG. C. E. NO. 9395
 FOR LEGEND SEE PLAN NO. S-A-64

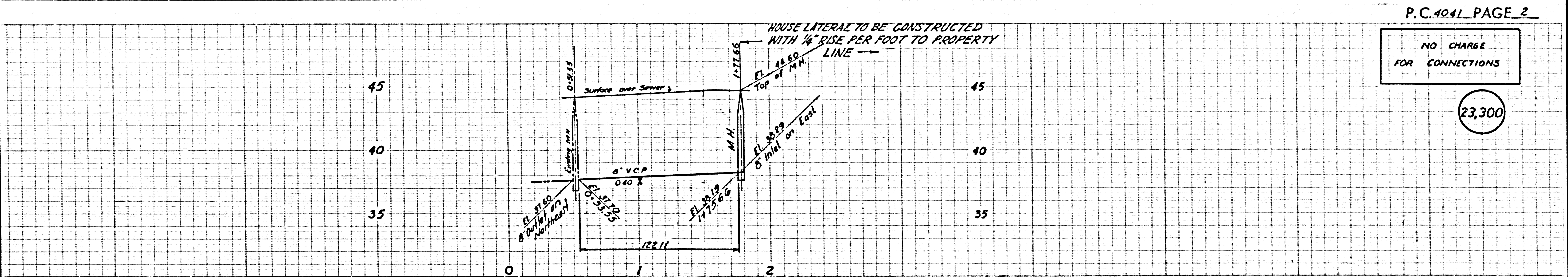
23,299
 (2)



NOTE:
 GRADES TO WHICH THIS IMPROVEMENT IS TO BE CONSTRUCTED ARE SHOWN ON PLANS AND PROFILES. GRADE POINTS FOR TOP OF CURB, CENTER LINE OF STREETS, OR CENTER LINE OF ALLEYS ARE SHOWN BY CIRCLES ON PROFILES AT ALL POINTS BETWEEN DESIGNATED POINTS. THE GRADE SHALL BE ESTABLISHED SO AS TO COMPARISON TO A STRAIGHT LINE DRAWN BETWEEN SAID DESIGNATED POINTS.
 ELEVATIONS ARE IN FEET ABOVE U.S.C. & G.S. 1944 DATUM OF 1929.
 THIS DRAWING AND THE DATA HEREON ARE HEREBY MADE A PART OF THE SPECIFICATIONS.
 WORK SHALL BE CONSTRUCTED ACCORDING TO SPECIFICATIONS ON FILE IN THE OFFICE OF THE COUNTY ENGINEER AND SHALL BE INSPECTED ONLY IN THE PRESENCE OF THE COUNTY ENGINEER.
 BEFORE WORK CAN BE STARTED, THE CONTRACTOR MUST OBTAIN A PERMIT TO EXCAVATE IN COUNTY STREETS FROM THE L. A. COUNTY ROAD DEPT., 120 W. 3RD ST. AND MAKE A DEPOSIT WITH THE COUNTY ENGINEER \$200.00 PER AMERICAN BUILDING 333 SO. BROADWAY SUFFICIENT TO COVER THE COST OF CONSTRUCTION INSPECTION AND RECORD PLANS.
 APPROVAL OF THIS PLAN BY THE COUNTY OF LOS ANGELES DOES NOT CONSTITUTE A REPRESENTATION AS TO THE ACCURACY OF THE LOCATION OF OR THE EXISTENCE OR NON-EXISTENCE OF ANY UNDERGROUND UTILITY PIPE, OR STRUCTURE WITHIN THE LIMITS OF THIS PROJECT. THIS NOTE APPLIES TO ALL PAGES.
 IF WORK IS TO BE DONE ON A STATE HIGHWAY, A PERMIT MUST BE OBTAINED FROM THE STATE OF CALIFORNIA, DIVISION OF HIGHWAYS, 120 SOUTH SPRING STREET.

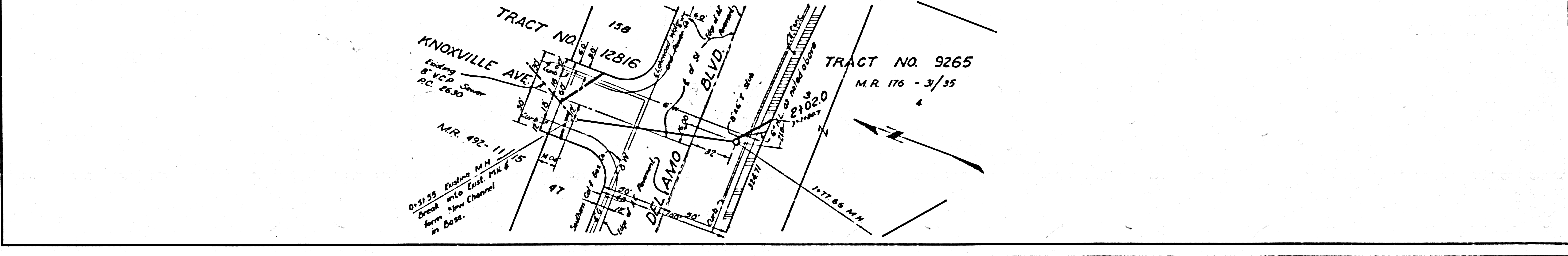
CITY OF LAKEWOOD, CALIFORNIA
 APPROVED, JOHN A. LAMBE, CITY ENGINEER
 APPROVED, A. M. BAWN, CHIEF ENGINEER
 BY: *A.P. Collins* SANITATION ENGINEER
 BY: *J.P. Williams* OFFICE ENGINEER
 CHECKED BY: *Pepi* 7-11-56
 OFFICE OF CITY ENGINEER, REG. C. E. NO. 7860

Loaded 5-29-56 *McLaren*



"NO CHARGE
 FOR CONNECTIONS"

23,300



ok. from field note:

P.C. 4041