

LANCASTER BLDG. DIST. NO. 8

PROFILE ALIGNMENT AND GRADE OF P.C. 4050
 SANITARY SEWERS PAGE 1
 TO BE CONSTRUCTED IN

TRACT N° 17051 AND TRACT N° 20793

PRIVATE CONTRACT NO. 4050

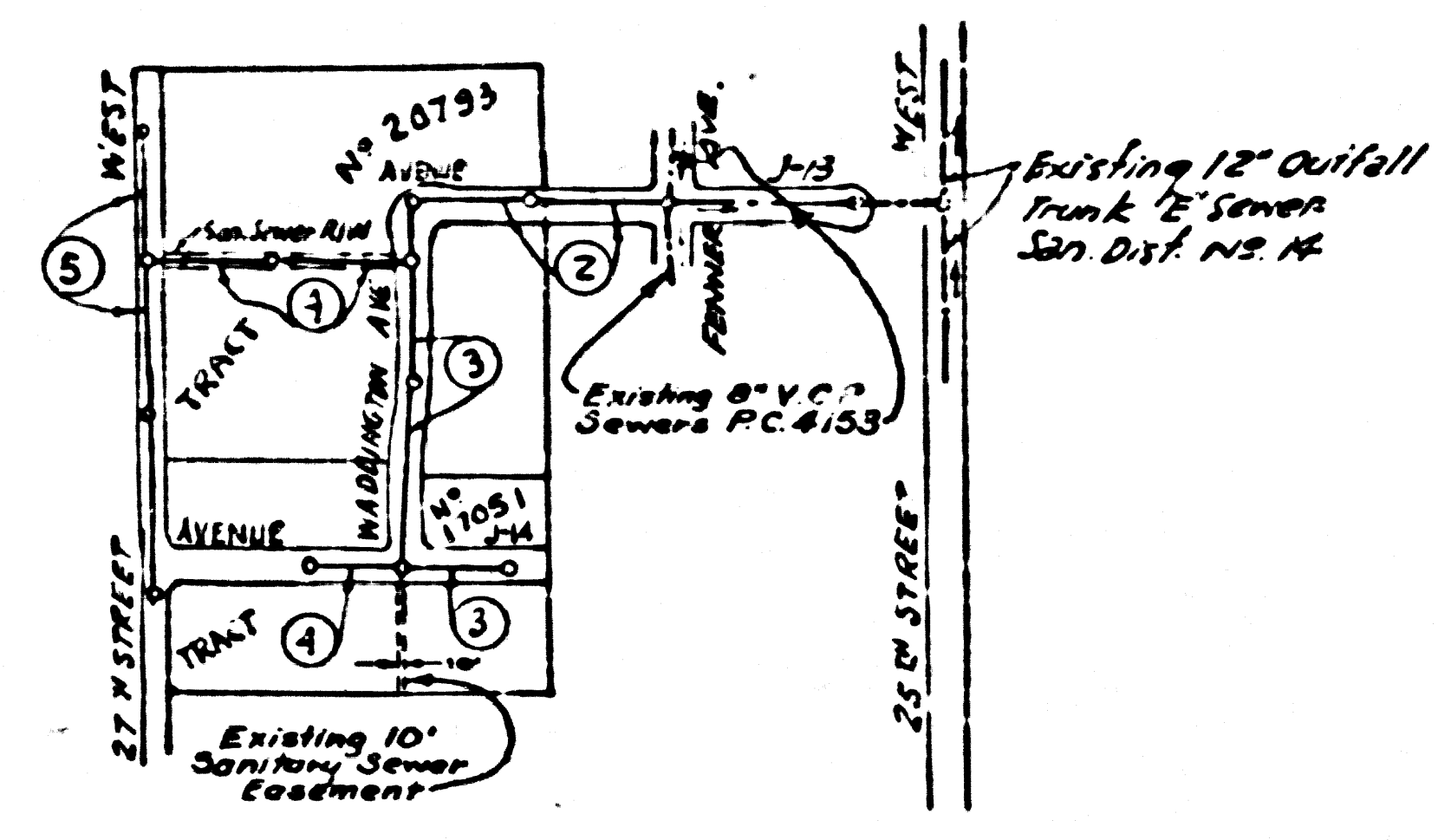
W.S. 71
 3 SHEETS, 5 PAGES

SCALE: 1" = 40' JUNE, 1956

ROSENTHAL ENGINEERING CO. (5)

FOR LEGEND SEE PLAN NO. S-A-64

(U.S.B.M.R-49) P.B. 1814, Pg. 10 - S.M.U.S. 1620
 2.7N., R. 13W., Near 1/4 corner between Sec. 25 & 36
 NORTH of POLE LINE, 38' N. & 38' W. of 1/4 corner.
 CONCRETE POST WITH BRONZE TABLET 49-1929, Elev. 2428.76



NO CHARGE FOR CONNECTIONS
 L. Austin 10-18-56

PC. 4050
 TRACT N° 17051
 TRACT N° 20793
 SCALE: 1" = 40'

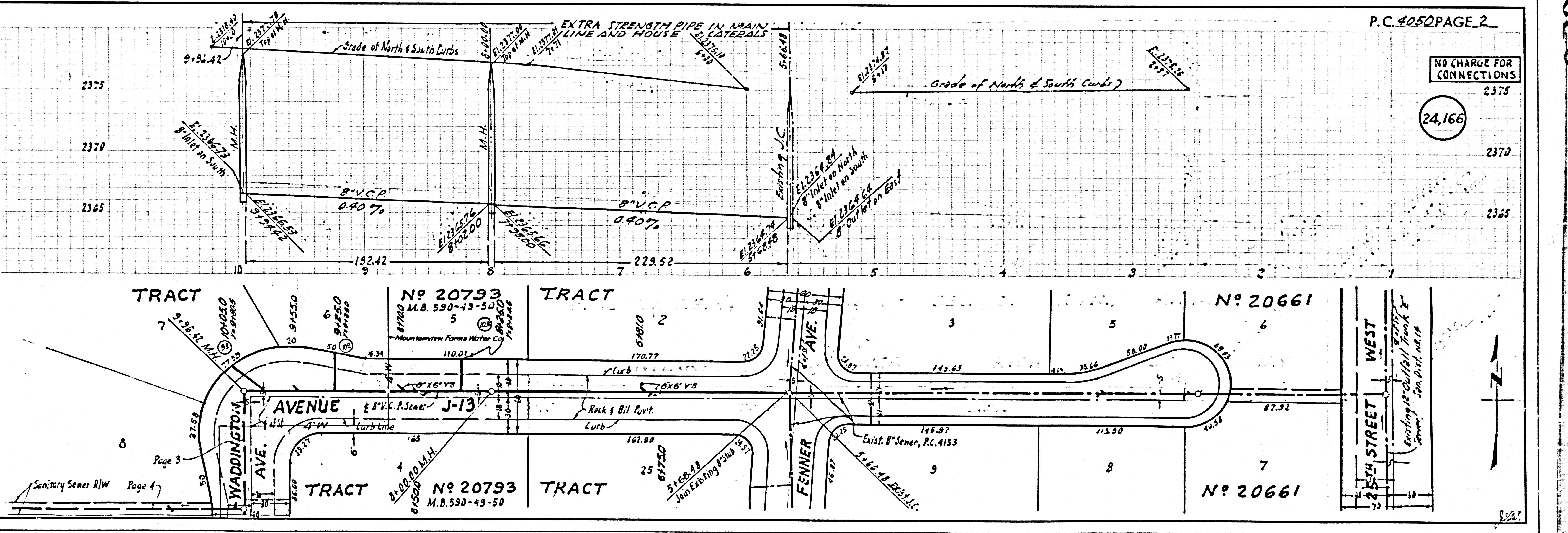
- NOTES
- PROVIDE STAKES ON THE PROPERTY LINE OR PROPERTY LINES PRODUCED AT RIGHT ANGLES TO THE SEWER LINE AT THE CENTER LINE OF EACH MANHOLE.
 - NO REPRESENTATIVE OF THE COUNTY ENGINEER WILL SURVEY OR LAYOUT ANY PORTION OF THE WORK.
 - THE OWNER OR HIS AUTHORIZED REPRESENTATIVE SHALL FURNISH THE COUNTY ENGINEER WITH GRADE SHEETS AND STATION FOR ALL HOUSE LATERALS AND Y BRANCHES AND SHALL PROVIDE STAKES FOR THEM AT THEIR PROPER LOCATIONS WITH STATION AND PLAINLY MARKED. ANY CHANGE IN LOCATION SHALL BE REQUESTED IN WRITING BY THE OWNER OR HIS REPRESENTATIVE. NO DIVISIONS SHALL BE MADE IN THESE PLANS WITHOUT THE APPROVAL OF THE COUNTY ENGINEER.
 - USE STANDARD MANHOLE FRAMES AND COVERS, S.A. 117, EXCEPT AS NOTED.
 - USE STANDARD STRENGTH PIPE EXCEPT AS NOTED.
 - USE CEMENT MORTAR FOR ALL VITRIFIED CLAY PIPE JOINTS.
 - RESURFACE ALL DRIVEWAYS WITHIN PAVED AREA TO MEET L. A. COUNTY ROAD DEPT. OR CALIF. STATE HIGHWAY DEPT. REQUIREMENTS IN ACCORDANCE WITH PERMITS.
 - ENCASE FOUR FEET OF SEWER AT POINTS OF INTERFERENCE WITH POLES, S.A. 119.
 - HOUSE LATERALS TO BE CONSTRUCTED WITH INVERTS AT PROPERTY LINE, 6 FEET BELOW CURB GRADE EXCEPT AS NOTED.
 - ALL STRUCTURES SHALL BE BRICK SEWER STRUCTURES, S.A. 104, EXCEPT AS NOTED.
 - FOR ALLOWABLE LEAKAGE TEST USE FORMULA NO. 1, SPEC. S, SEC. 84.
 - MANHOLE TOPS IN UNIMPROVED RIGHTS-OF-WAY TO BE 6" ABOVE FINISHED GRADE.
 - ALL PIPE JOINTS THAT ARE WITHIN 20 FEET OF ANY PROPERTY LINE, WITH 4" OF CEMENT MORTAR.
 - THE PRIVATE ENGINEER IS TO FURNISH THE DEPTH OF ALL HOUSE LATERALS AT THE PROPERTY LINE, BELOW THE TOP OF CURB ELEVATION, ON THE GRADE SHEET.

NOTE
 GRADES TO WHICH THIS IMPROVEMENT IS TO BE CONSTRUCTED ARE SHOWN ON PLANS AND PROFILE GRADE POINTS FOR TOP OF CURBS, CENTER LINE OF STREETS, OR CENTER LINE OF ALLEYS ARE SHOWN BY CIRCLES ON PROFILES AT ALL POINTS BETWEEN DESIGNATED POINTS THE GRADE SHALL BE OBTAINED SO AS TO CONFORM TO A STRAIGHT LINE DRAWN BETWEEN SAID DESIGNATED POINTS.
 THIS DRAWING AND THE DATA HEREON ARE HEREBY MADE A PART OF THE SPECIFICATIONS.
 WORK SHALL BE CONSTRUCTED ACCORDING TO SPECIFICATIONS ON FILE IN THE OFFICE OF THE COUNTY ENGINEER AND SHALL BE INSPECTED ONLY IN THE PRESENCE OF THE COUNTY ENGINEER.
 BEFORE WORK CAN BE STARTED THE CONTRACTOR MUST OBTAIN A PERMIT TO EXCAVATE IN COUNTY STREETS FROM THE L. A. COUNTY ROAD DEPT. THE WORK SHALL BE UNDER THE SUPERVISION OF THE COUNTY ENGINEER FROM THE AMERICAN ROAD AND BUILDING 324 SO. BROADWAY SUFFICIENT TO COVER THE COST OF CONSTRUCTION INSPECTION AND RECORD PLANS.
 APPROVAL OF THIS PLAN BY THE COUNTY OF LOS ANGELES DOES NOT CONSTITUTE A REPRESENTATION AS TO THE ACCURACY OF THE LOCATION OF OR THE EXISTENCE OR NON-EXISTENCE OF ANY UNDERGROUND UTILITY PIPE, OR STRUCTURE WITHIN THE LIMITS OF THIS PROJECT THE WORK APPLICABLE TO THIS PAGE.
 IF WORK IS TO BE DONE IN A STATE HIGHWAY, A PERMIT MUST BE OBTAINED FROM THE STATE OF CALIFORNIA, DIVISION OF HIGHWAYS, 120 SOUTH SPRING STREET.

COUNTY OF LOS ANGELES, CALIFORNIA
 APPROVED, JOHN A. LAMBIE, COUNTY ENGINEER
 APPROVED, A. M. BAWN, CHIEF ENGINEER
 BY: A. P. Collins, SANITATION ENGINEER
 BY: J. P. Kuhn, OFFICE ENGINEER
 CHECKED BY: J. P. Kuhn, 10-16-56
 OFFICE OF COUNTY ENGINEER, BLDG. C. E. NO. 7860

Letted 2-25-57 M. Green

P.C. 4050 PAGE 2



NO CHARGE FOR CONNECTIONS
 24,166

Sanitary Sewer DW Page 4

322

