

WEST HOLLYWOOD BUILDING DISTRICT No. 9

TOPS OF ALL SEWER STRUCTURES TO BE ADJUSTED TO FINISHED GRADE.
 USE STANDARD STRENGTH PIPE.
 USE CEMENT MORTAR FOR ALL VITRIFIED CLAY PIPE JOINTS.
 EXTEND HOUSE LATERALS WITH 1/4 INCH RISE PER FOOT TO PROPERTY LINE.

CASH CONTRACT No. 30777

PLAN OF
 SANITARY SEWERS
 TO BE MODIFIED IN
 HUNTLEY DRIVE-BEVERLY PLACE
 NORWICH DRIVE
 AND
 BEVERLY BOULEVARD

PRIVATE CONTRACT No. 4056

JOB NUMBER 077841
 PLAN No. 2
 PAGE 1 OF 2 PAGES

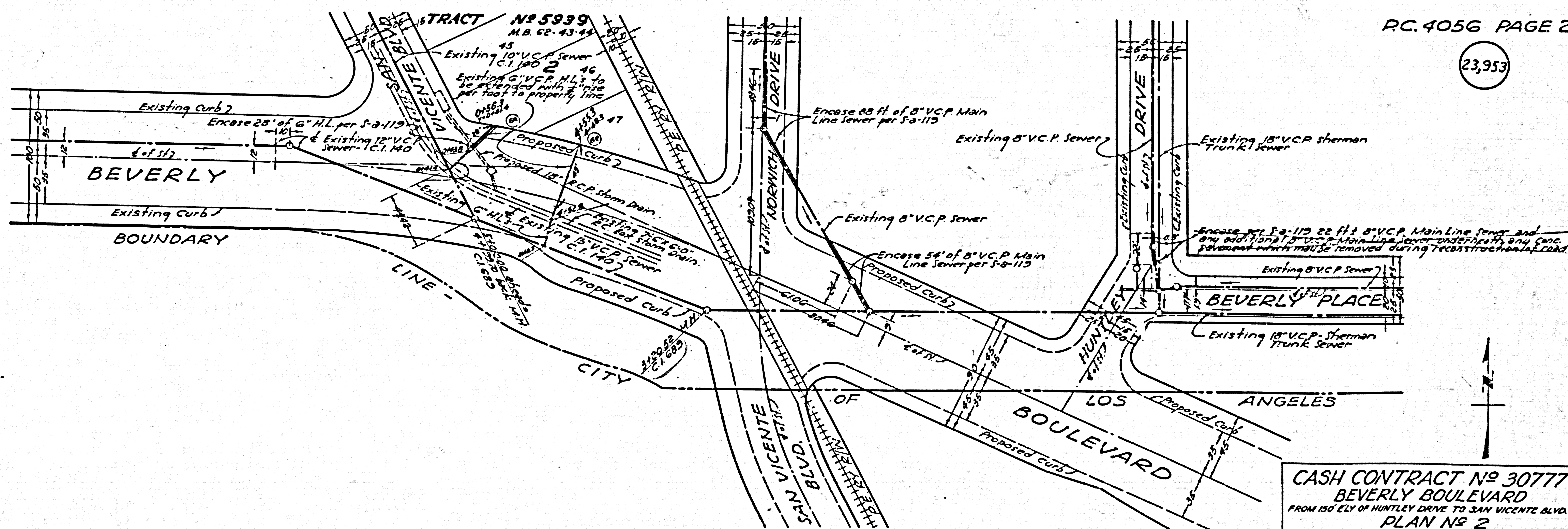
SCALE: 1"=40' JUNE 1956
 COUNTY OF LOS ANGELES, CALIFORNIA
 JOHN A. LAMBIE COUNTY ENGINEER

Submitted: *H. L. Smiley* Approved: *A. P. Collins*
 ACTING ASSISTANT SANITATION ENGINEER SANITATION ENGINEER

FOR LEGEND
 See Plan No. 3-8-64

REFERENCES			
W.D. 22	DESIGNED	H. LEE	JUNE 1956
A.B.	TRACED	H. LEE	JUNE 1956
F.B.	CHECKED	C. PEARSON	JULY 1956

Revised 1-15-57 W.C. Green



PC. 4056 PAGE 2

23,953

CASH CONTRACT No. 30777
 BEVERLY BOULEVARD
 FROM 150' ELY OF HUNTLEY DRIVE TO SAN VICENTE BLVD.
 PLAN No. 2

This drawing and the data hereon are hereby made a part of the specifications.

CASH CONTRACT NO. 30777 - BEVERLY BOULEVARD - SAN VICENTE BLVD. - HUNTLEY DRIVE - NORWICH DRIVE - WEST HOLLYWOOD BUILDING DISTRICT NO. 9

CASH CONTRACT NO. 30777 - BEVERLY BOULEVARD - SAN VICENTE BLVD. - HUNTLEY DRIVE - NORWICH DRIVE - WEST HOLLYWOOD BUILDING DISTRICT NO. 9