

EAST LOS ANGELES BLDG. DIST. NO. 6

PROFILE ALIGNMENT AND GRADE OF P.C. 4057
 SANITARY SEWERS PAGE 1

TO BE CONSTRUCTED IN
 VAIL AVENUE AND
 SANITARY SEWER RIGHTS OF WAY (B)
 PRIVATE CONTRACT NO. 4057

23682
 (B)

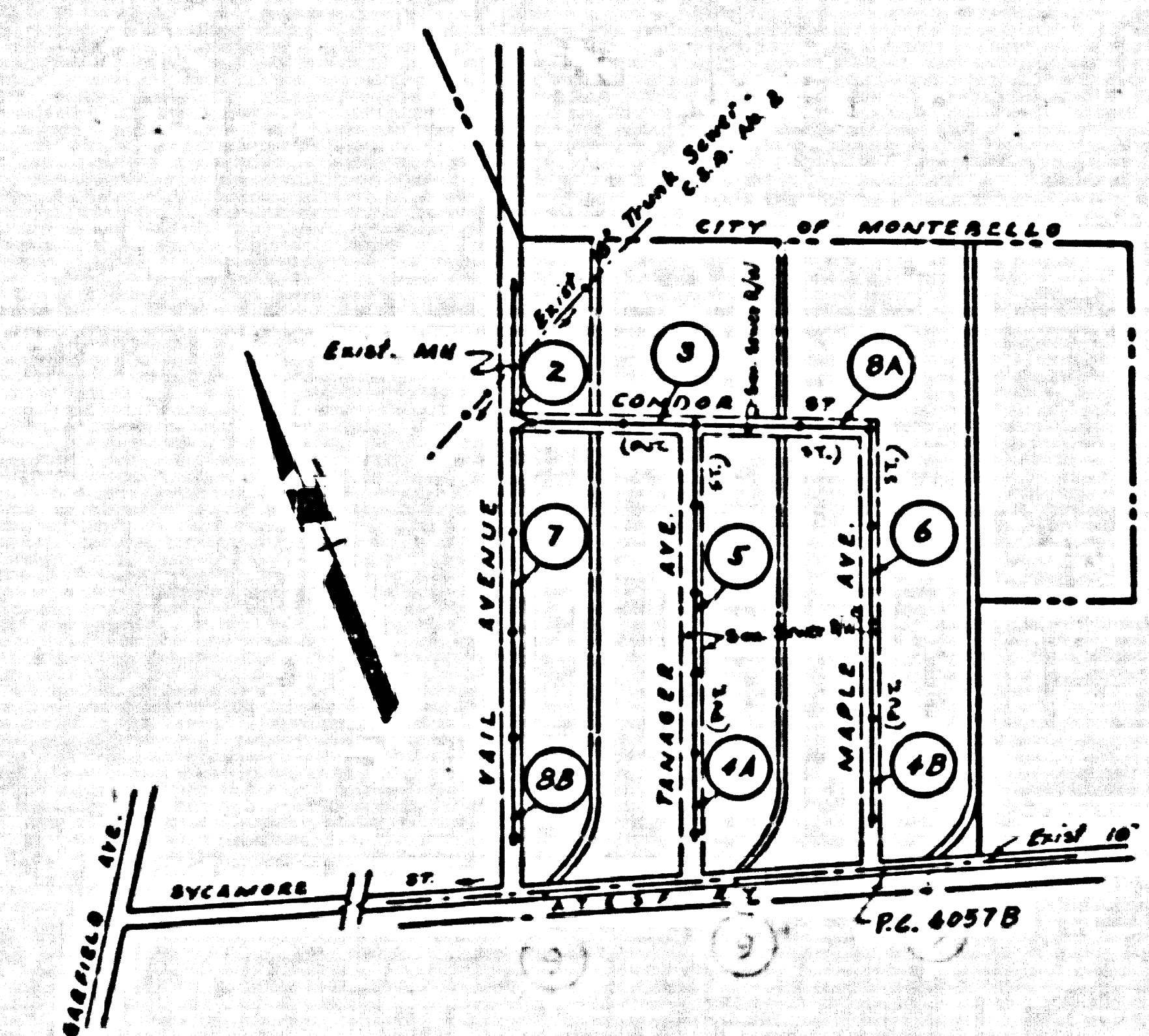
W.S. 36
 4 SHEETS, 8 PAGES
 SCALE: 1" = 40'
 DATE: JUNE 1956
 PREPARED IN THE OFFICES OF

CAL ENGINEERS
 Russell G. Ludwig
 REG. E. NO. 6958
 FOR LEGEND SEE PLAN NO. S-A-64

- NOTES
1. PROFILE STAKES ON THE PROPERTY LINE OR PROPERTY LINES PRODUCED AT RIGHT ANGLES TO THE SEWER LINE AT THE CENTER LINE OF EACH PARCELS.
 2. NO REPRESENTATIVE OF THE COUNTY ENGINEER WILL SURVEY OR LAYOUT ANY PORTION OF THE WORK.
 3. THE OWNER OR HIS AUTHORIZED REPRESENTATIVE SHALL FURNISH THE COUNTY ENGINEER WITH GRADE SHEETS AND STATIONING FOR ALL HOUSE LATERALS AND Y BRANCHES AND SHALL PROVIDE STAKES FOR THEM AT THEIR PROPER LOCATIONS WITH STATIONING PLAINLY MARKED. ANY CHANGE IN LAYOUT SHALL BE REQUESTED BY WRITING BY THE OWNER OR HIS REPRESENTATIVE.
 4. NO REVISIONS SHALL BE MADE IN THESE PLANS WITHOUT THE APPROVAL OF THE COUNTY ENGINEER.
 5. USE STANDARD MANHOLE FRAMES AND COVERS, S.A. 117, EXCEPT AS NOTED.
 6. USE STANDARD STRENGTH PIPE EXCEPT AS NOTED.
 7. USE CASHELY MORTAR FOR ALL VITRIFIED CLAY PIPE JOINTS.
 8. RESURFACE ALL TRENCH WITHIN PAVED AREA TO MEET L.A. COUNTY ROAD DEPT., OR CALIF. STATE HIGHWAY DEPT. REQUIREMENTS IN ACCORDANCE WITH PERMITS.
 9. ENCASE FOUR FEET OF SEWER AT POINTS OF INTERFERENCE WITH POLES, S.A. 119.
 10. HOUSE LATERALS TO BE CONSTRUCTED WITHIN SEWER RIGHTS OF WAY EXCEPT AS NOTED.
 11. ALL STRUCTURES SHALL BE BRICK EXCEPT AS NOTED.
 12. FOR ALLOWABLE SPREADS REFER TO FORMULA NO. 1 SPEC. 117, S.C. 117.
 13. MANHOLE TOPS IN UNIMPROVED RIGHTS-OF-WAY TO BE 6" ABOVE FINISHED GRADE.

INDEX TABLE	
SHEETS	PAGES
4	8

CONNECTION CHARGES AS INDICATED
L. Carter 10-10-56



S.M. 37-944 L.A. Co. Rd. Dept. Elev. 174.407
 E. of Vail Ave. and Washington Blvd.
 Brass cap in standard man. box

Before breaking into any existing structure and before final acceptance of this work, County Sanitation District should be notified in order that required inspection may be made.

Dated 11-27-56 Wilson

NOTE: GRADES TO WHICH THIS IMPROVEMENT IS TO BE CONSTRUCTED ARE SHOWN ON PLANS AND PROFILES. GRADE POINTS FOR TOP OF CURB, CENTER LINE OF STREET, OR CENTER LINE OF ALLEY ARE SHOWN BY CIRCLES ON PROFILES AT ALL POINTS BETWEEN DESIGNATED POINTS THE GRADE SHALL BE ESTABLISHED SO AS TO CONFORM TO A STRAIGHT LINE BEARING BETWEEN SAID DESIGNATED POINTS.

REVISIONS ARE IN RED ABOVE U.S. & C.E. 684 6846 REVISED BY 1959

THIS DRAWING AND THE DATA HEREON ARE HEREBY MADE A PART OF THE SPECIFICATIONS WHICH SHALL BE CONSIDERED ACCORDING TO SPECIFICATIONS ON FILE IN THE OFFICE OF THE COUNTY ENGINEER AND SHALL BE PROSECUTED ONLY IN THE PRESENCE OF THE COUNTY ENGINEER.

WORK SHALL BE STARTED AS SOON AS THE CONTRACTOR HAS OBTAINED A PERMIT TO EXCAVATE IN COUNTY SEWER RIGHTS OF WAY FROM THE L.A. COUNTY ROAD DEPT., 100 W. 2ND ST. AND MAKE A DEPOSIT WITH THE COUNTY ENGINEER, ROOM 204 MAIN AMERICAN BUILDING, 210 SO. BROADWAY IN SUFFICIENT TO COVER THE COST OF CONSTRUCTION INSPECTION AND RECORD PLANS.

APPROVAL OF THIS PLAN BY THE COUNTY OF LOS ANGELES DOES NOT CONSTITUTE A REPRESENTATION AS TO THE ACCURACY OF THE LOCATION OF OR THE EXISTENCE OR NON-EXISTENCE OF ANY UNDERGROUND UTILITY PIPE, OR STRUCTURE WITHIN THE LIMITS OF THIS PROJECT. THIS NOTE APPLIES TO ALL PAGES.

IF WORK IS TO BE DONE ON A STATE HIGHWAY, A PERMIT MUST BE OBTAINED FROM THE STATE OF CALIFORNIA, DIVISION OF HIGHWAYS, 120 SOUTH SPRING STREET.

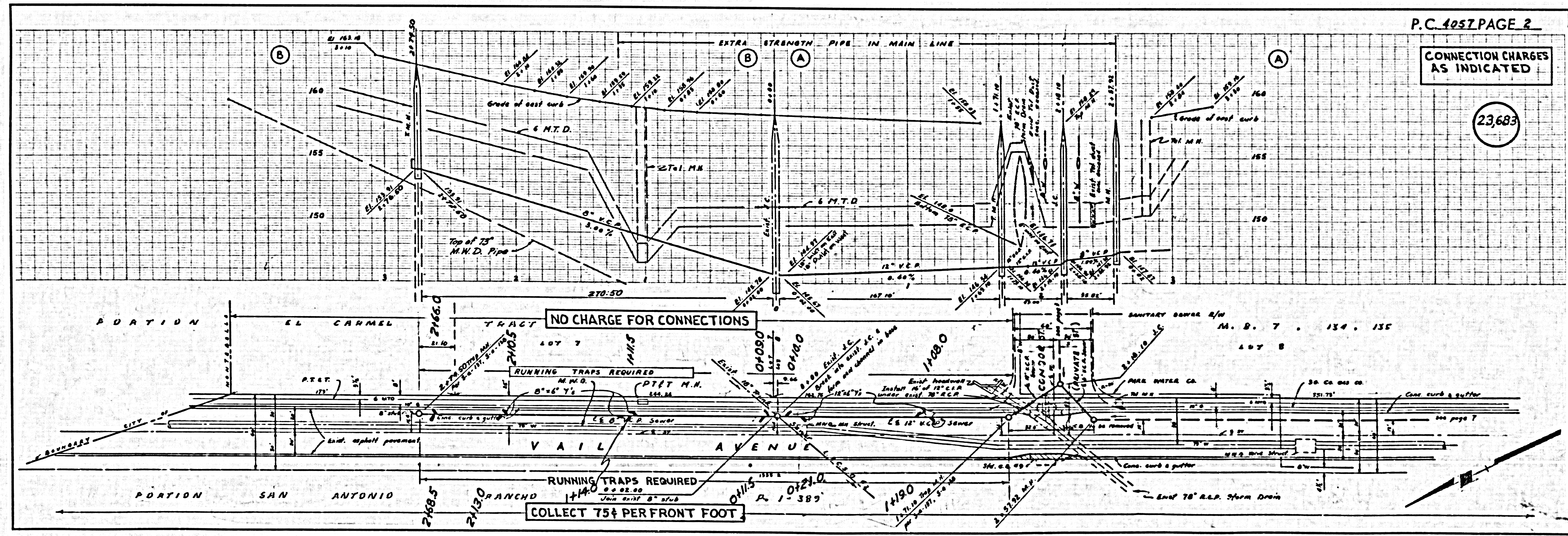
COUNTY OF LOS ANGELES, CALIFORNIA

APPROVED, JOHN A. LAMBE, COUNTY ENGINEER
 APPROVED, A. M. BAWN, CHIEF ENGINEER
 CO. SAN. DIST. NO. 7
 BY *J.P. Carter* COUNTY ENGINEER
 BY *J. P. ...* CHIEF ENGINEER
 CHECKED BY *P. ...* 10-10-56
 OFFICE OF COUNTY ENGINEER, REG. E. NO. 7868

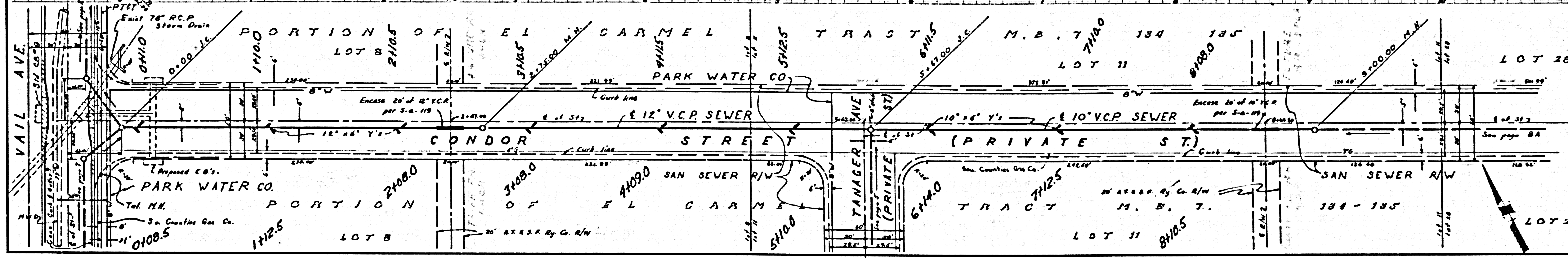
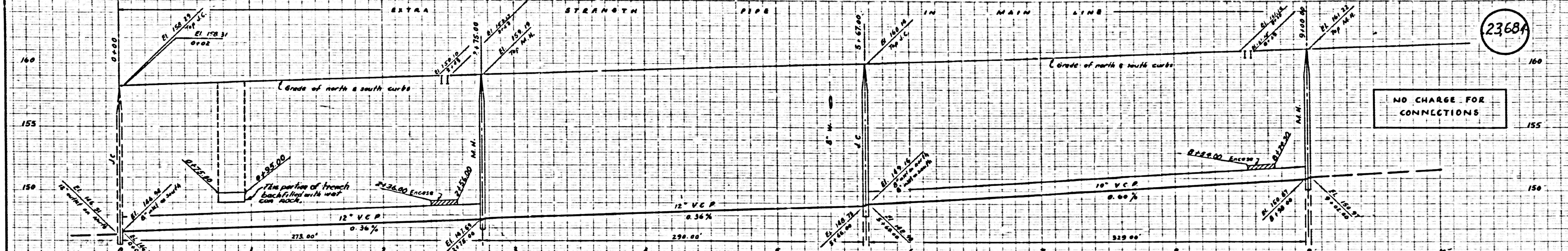
P.C. 4057 PAGE 2

CONNECTION CHARGES AS INDICATED

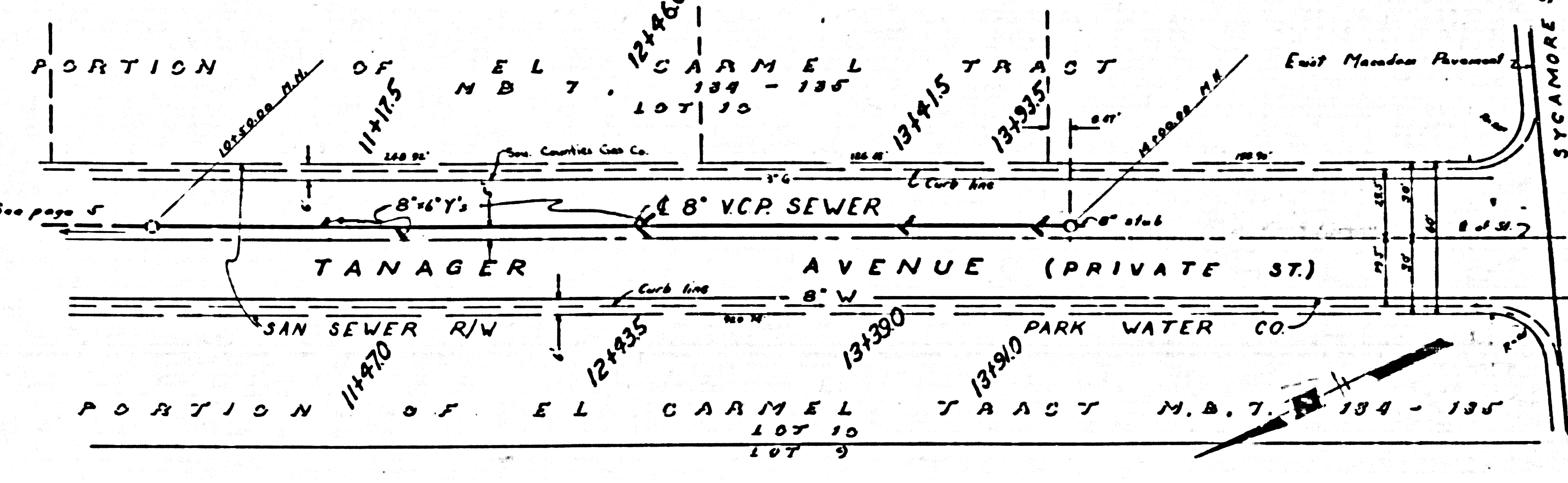
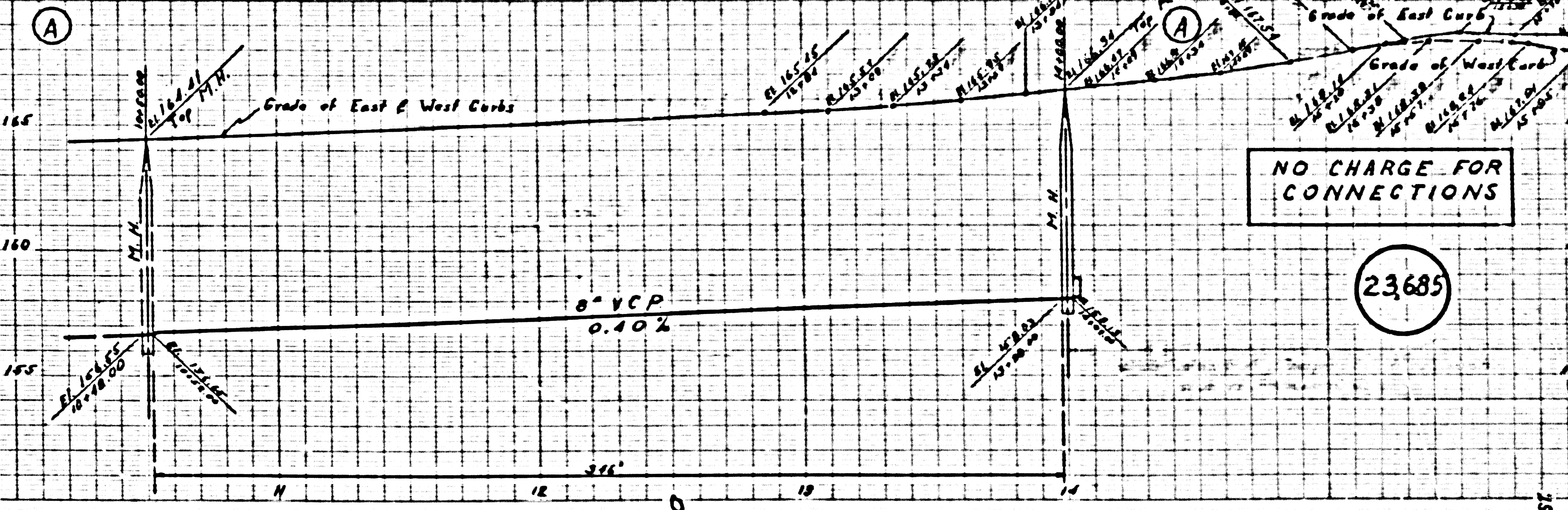
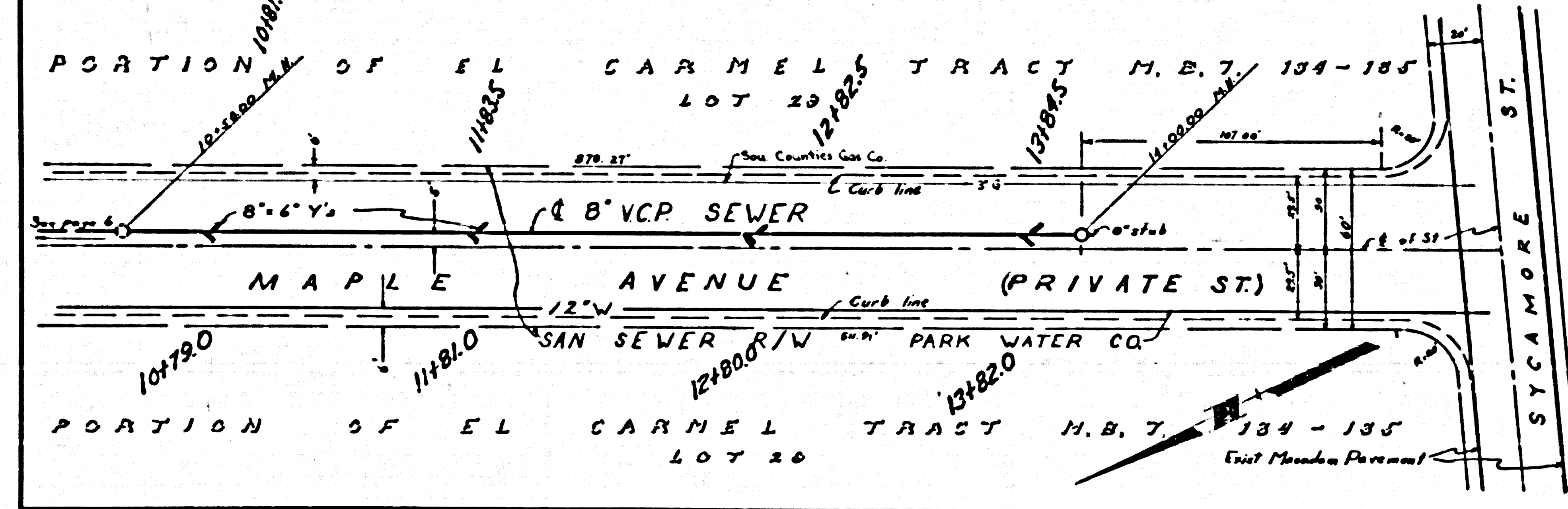
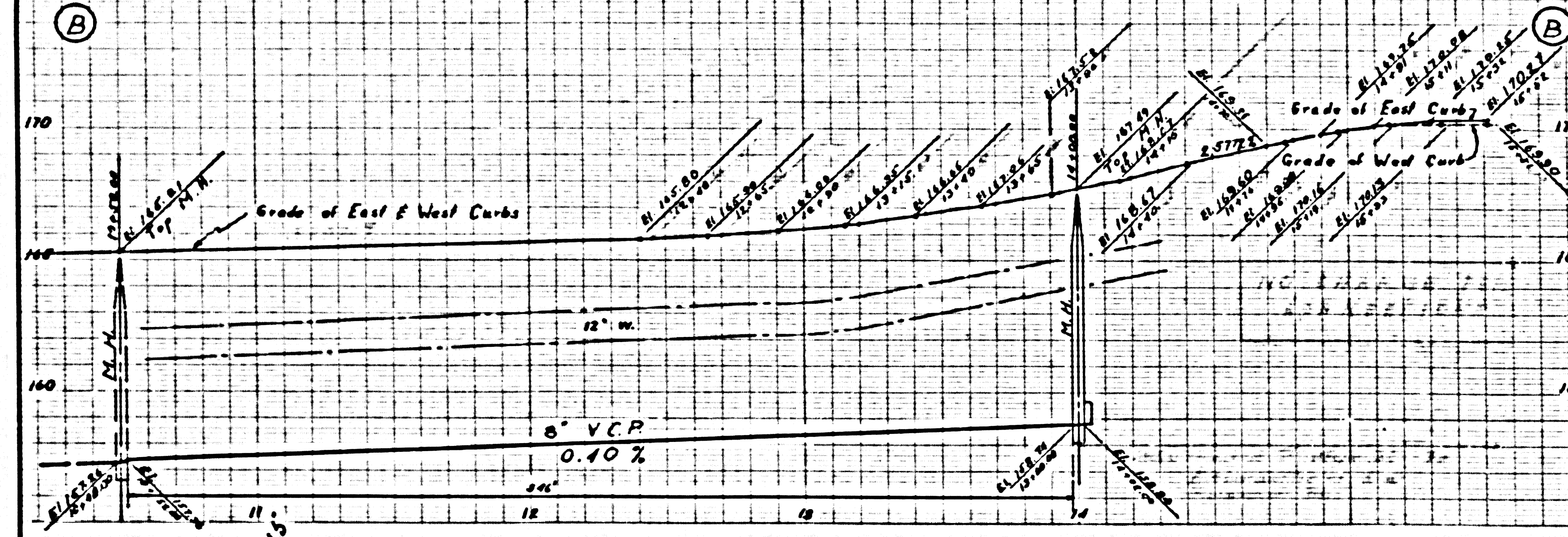
23683



23684



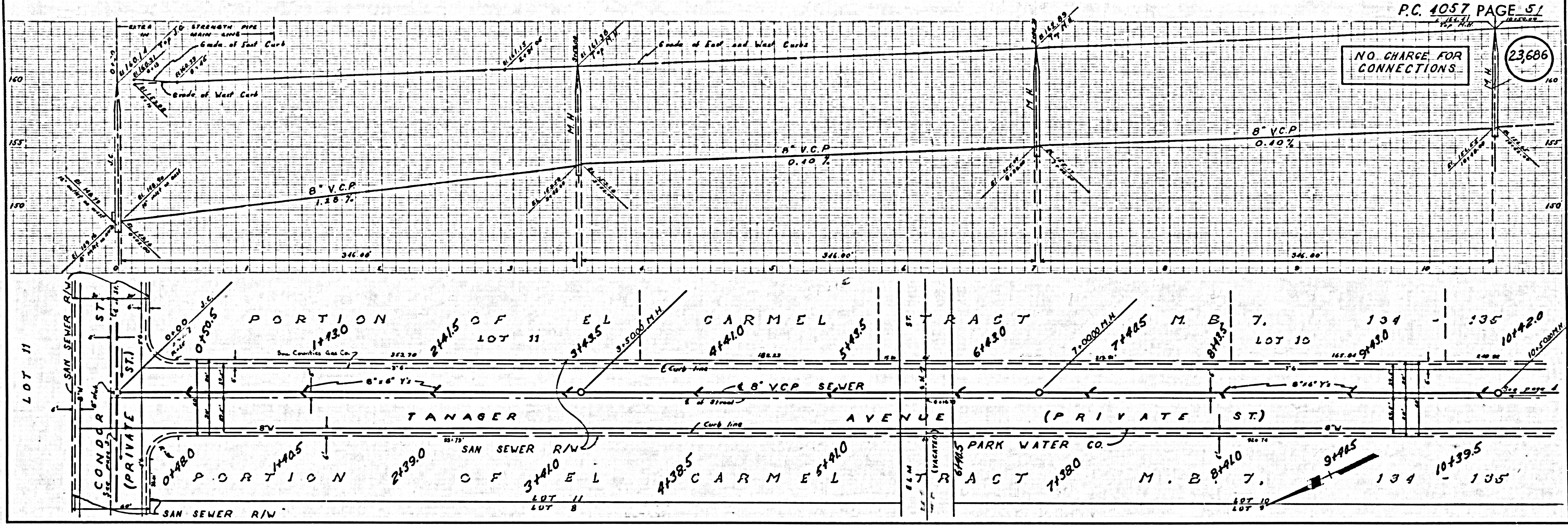
23685



P.C. 1057

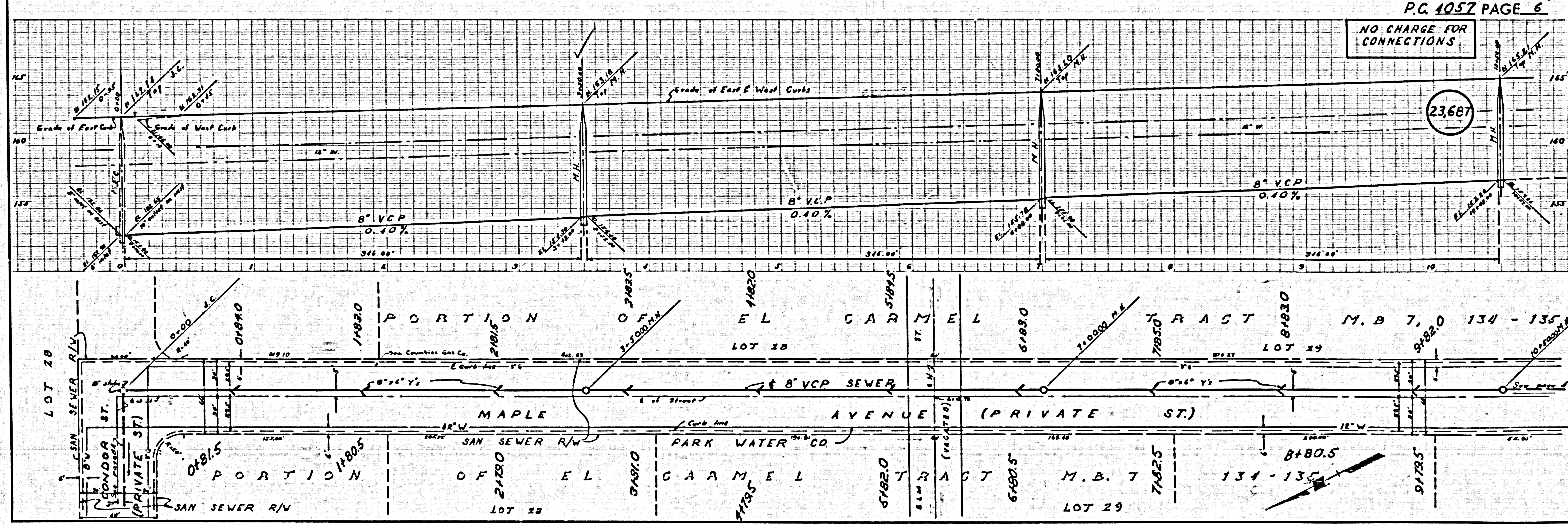
NO CHARGE FOR CONNECTIONS

23686



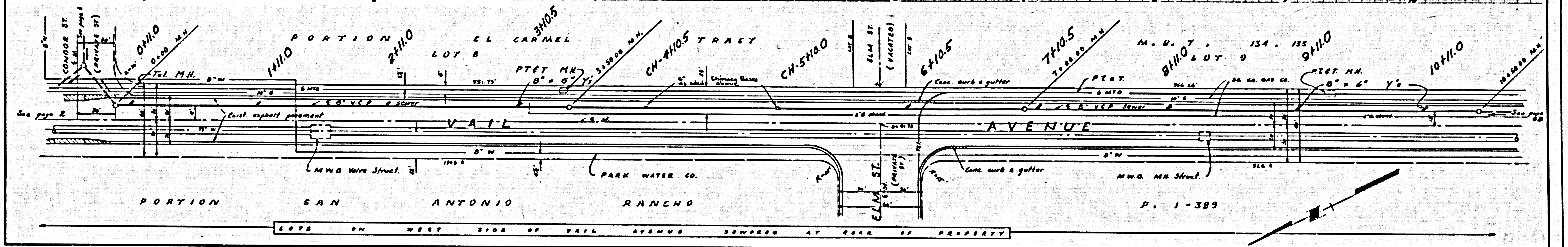
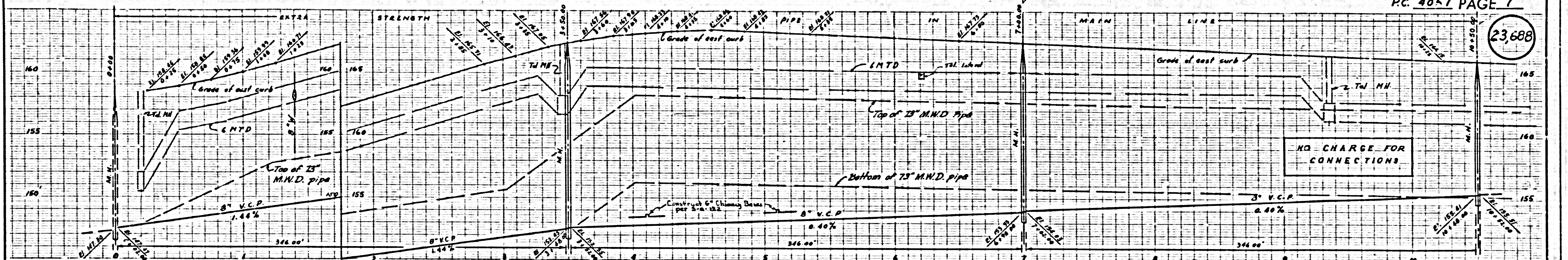
NO CHARGE FOR CONNECTIONS

23687

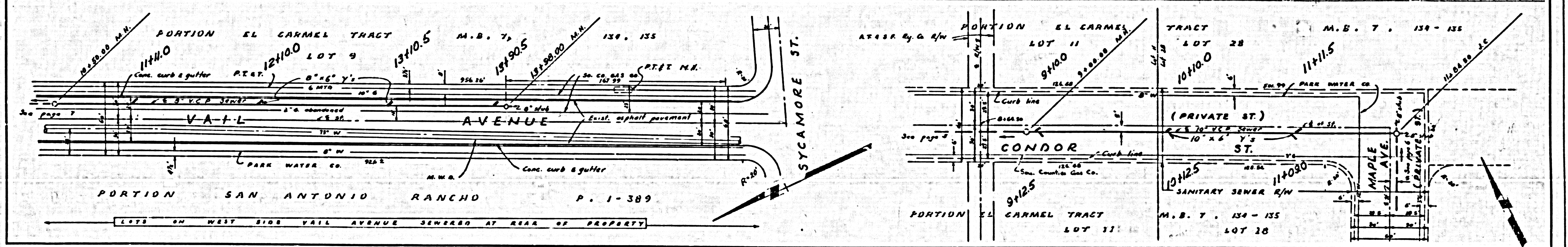
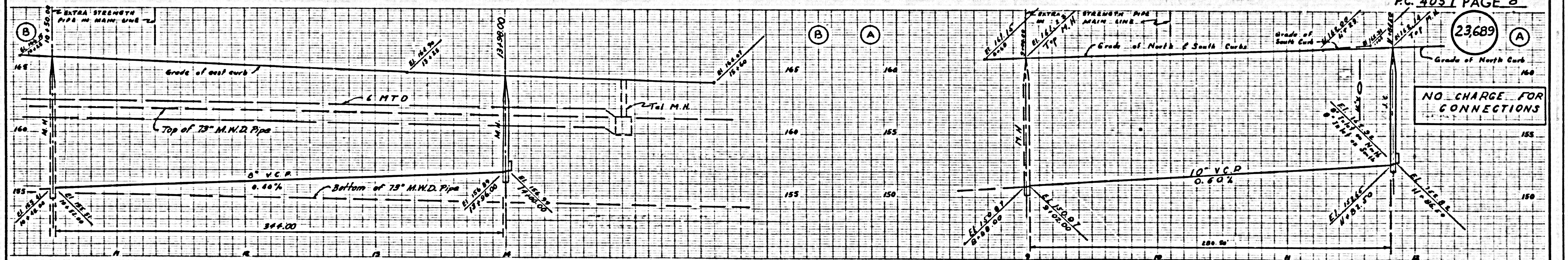


Corrected

23688

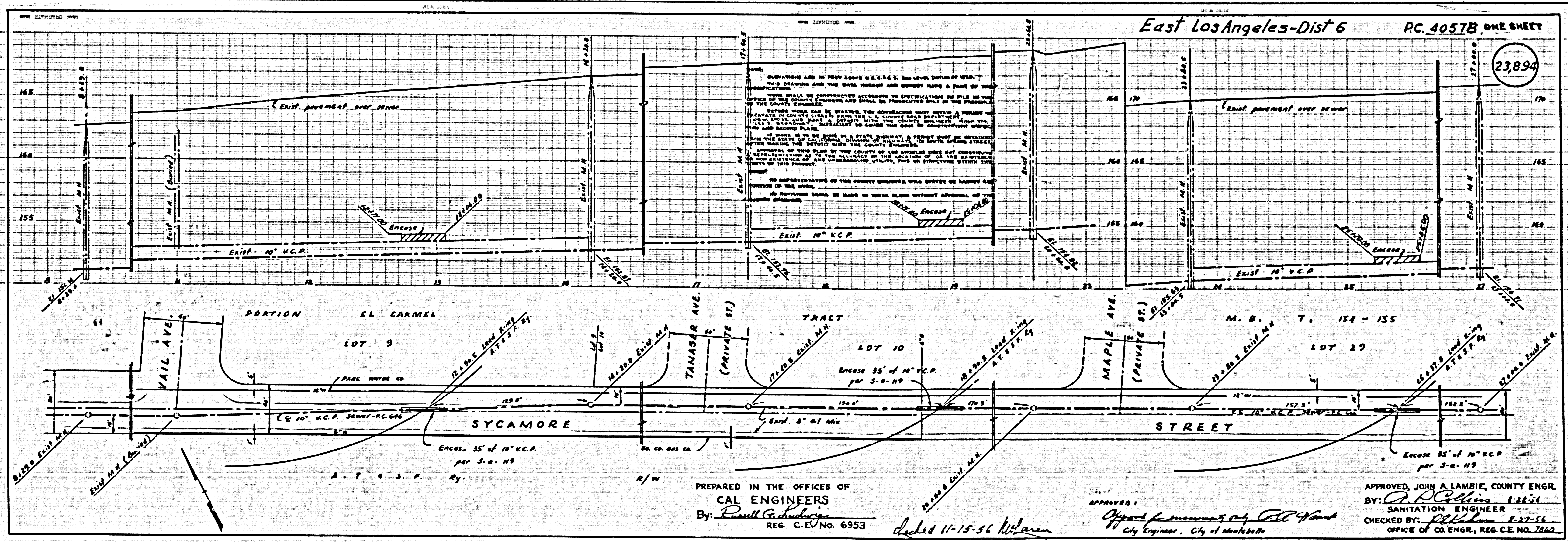


23689



PC 4023

23,894



ALL DIMENSIONS ARE IN FEET UNLESS OTHERWISE SPECIFIED.
 THIS DRAWING AND THE DATA HEREON ARE HEREBY MADE A PART OF THE CONTRACT.
 WORK SHALL BE CONSTRUCTED ACCORDING TO SPECIFICATIONS AS FILED IN THE OFFICE OF THE COUNTY ENGINEER AND SHALL BE PROSECUTED ONLY IN THE FEDERAL COURTS.
 BEFORE WORK CAN BE STARTED, THE CONTRACTOR MUST OBTAIN A PERMIT TO OCCUPY THE PUBLIC STREET FROM THE L.A. COUNTY ROAD DEPARTMENT.
 THE CONTRACTOR SHALL BE RESPONSIBLE FOR OBTAINING ALL NECESSARY PERMITS AND SHALL BE RESPONSIBLE FOR OBTAINING THE DEEDS WITH THE COUNTY ENGINEER.
 IF WORK IS TO BE DONE ON A STATE HIGHWAY, A PERMIT MUST BE OBTAINED FROM THE STATE OF CALIFORNIA, DIVISION OF HIGHWAYS, TO OBTAIN STREET CLOSURE.
 APPROVAL OF THIS PLAN BY THE COUNTY OF LOS ANGELES DOES NOT CONSTITUTE AN ENDORSEMENT OF THE PROJECT OR THE LOCATION OF OR THE STRUCTURE OR THE EXISTENCE OF ANY UNDERGROUND UTILITIES OR STRUCTURES WITHIN THE LIMITS OF THIS PROJECT.
 NO REPRESENTATIVE OF THE COUNTY ENGINEER WILL SUPERVISE OR VERIFY THE CONSTRUCTION OF THE WORK.
 NO PROVISIONS SHALL BE MADE IN THESE PLANS WITHOUT APPROVAL OF THE COUNTY ENGINEER.

PREPARED IN THE OFFICES OF
CAL ENGINEERS
 By: Russell G. Gendberg
 REG. C.E. No. 6953

Dated 11-15-56 W. J. ...

APPROVED:
John A. Lambie
 City Engineer, City of Montebello

APPROVED, JOHN A. LAMBIE, COUNTY ENGR.
 BY: Russell Gendberg
 SANITATION ENGINEER
 CHECKED BY: Russell Gendberg
 OFFICE OF CO. ENGR., REG. C.E. NO. 7860