

BELFLOWER BLDG. DIST. NO. 4

PROFILE ALIGNMENT AND GRADE OF **P.C. 4059**
SANITARY SEWERS PAGE 1
 TO BE CONSTRUCTED IN
DEL AMO BOULEVARD

PRIVATE CONTRACT NO. 4059
 W.S. 37
 1 SHEET, 2 PAGES (24,056)
 SCALE: 1" = 10' JUNE 1956
 PREPARED IN THE OFFICES OF
McDANIEL ENGINEERING CO.
 REG. C. E. NO. 785E
 FOR LEGEND SEE PLAN NO. S-A-64

S.M. 57385 Co. Survey
 datum Elev. 38.978
 3rd C.S. Mon. in wall cover
 at S. Intersection Del
 Amo & Pioneer Boulevard

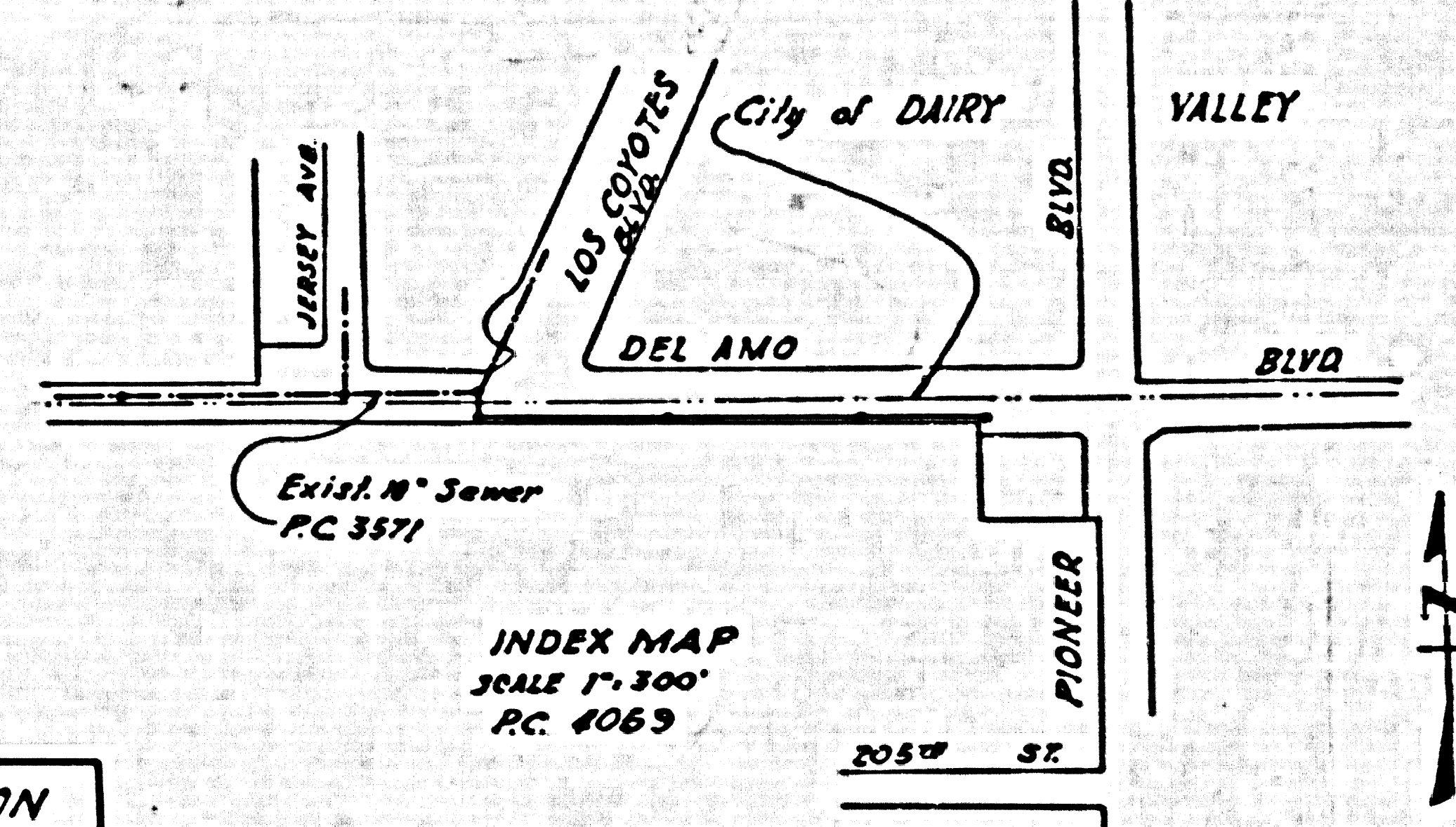
INDEX TABLE

SHEETS	PAGES
1	2

COLLECT - CHARGES
 AS INDICATED
 L. Carter 9/2/56

INDUSTRIAL WASTE DIVISION
 L. Carter 9/2/56
 Approved By:

- NOTES
- PROVIDE STAKES ON THE PROPERTY LINE OR PROPERTY LINES PRODUCED AT RIGHT ANGLES TO THE SEWER LINE AT THE CENTER LINE OF EACH MANHOLE.
 - NO REPRESENTATIVE OF THE COUNTY ENGINEER WILL SURVEY OR LAYOUT ANY PORTION OF THE WORK.
 - THE OWNER OR HIS AUTHORIZED REPRESENTATIVE SHALL FURNISH THE COUNTY ENGINEER WITH GRADE SHEETS AND STAKES FOR ALL HOUSE LATERALS AND T-BRANCHES AND SHALL PROVIDE STAKES FOR THEM AT THEIR PROPER LOCATIONS WITH STATIONING AND PLAINLY MARKED. ANY CHANGE IN LOCATION SHALL BE REQUESTED BY THE OWNER OR HIS AUTHORIZED REPRESENTATIVE.
 - NO REVISIONS SHALL BE MADE IN THESE PLANS WITHOUT THE APPROVAL OF THE COUNTY ENGINEER.
 - USE STANDARD MANHOLE FRAMES AND COVERS, S-A-117, EXCEPT AS NOTED.
 - USE STANDARD STRENGTH PIPE EXCEPT AS NOTED.
 - USE LINE EXPENSE FOR ALL WITHELD CLAY PIPE JOINTS.
 - RESURFACE ALL TRENCHES WITHIN PAVED AREA TO MEET L. A. COUNTY ROAD DEPT. OR CALIF. STATE HIGHWAY DEPT. REQUIREMENTS IN ACCORDANCE WITH PERMITS.
 - INDICATE FOUR FEET OF STREETS AT POINTS OF INTERFERENCE WITH POLES, S-A-118.
 - HOUSE LATERALS TO BE CONSTRUCTED WITH INVERTS AT PROPERTY LINE. — 6" FEET BELOW CURB GRADE EXCEPT AS NOTED.
 - ALL STRUCTURES SHALL BE CONSTRUCTED WITHIN SPECIFICATIONS, S-A-124, EXCEPT AS NOTED.
 - FOR MANHOLE BRACKETS USE THE FORMER L. A. COUNTY SPEC. L. SEC. 84.
 - MANHOLE TOPS IN UNIMPROVED PORTIONS OF WAY TO BE 6" ABOVE FINISHED GRADE.
 - THE PRIVATE ENGINEER IS TO FURNISH HOUSE LATERAL DEPTH AT THE PROPERTY LINE BELOW THE TOP OF CURB ELEVATION FOR EACH HOUSE LATERAL, ON THE GRADE SHEET.



checked 1-29-57 W. L. ...

NOTES

GRADES TO WHICH THE IMPROVEMENT IS TO BE CONSTRUCTED ARE SHOWN ON PLANS AND PROFILE GRADE POINTS FOR TOP OF CURB, CENTER LINE OF STREETS, OR CENTER LINE OF ALLEYS ARE SHOWN BY CIRCLES ON PROFILES AT ALL POINTS BETWEEN REGULARLY SPACED POINTS THE GRADE SHALL BE ESTABLISHED SO AS TO CONFORM TO A STRAIGHT LINE DRAWN BETWEEN SAID SPACED POINTS.

ELEVATIONS ARE IN FEET ABOVE U.S.C. & G.S. MEAN LEVEL DATUM AS OF 1929.

THIS DRAWING AND THE DATA HEREON ARE HEREBY MADE A PART OF THE SPECIFICATIONS.

WORK SHALL BE CONSTRUCTED ACCORDING TO SPECIFICATIONS ON FILE IN THE OFFICE OF THE COUNTY ENGINEER AND SHALL BE PROSECUTED UNDER THE PRESENCE OF THE COUNTY ENGINEER.

BEFORE WORK CAN BE STARTED, THE CONTRACTOR MUST OBTAIN A PERMIT TO EXCAVATE IN COUNTY STREETS FROM THE L. A. COUNTY ROAD DEPT., 125 W. 5TH ST. AND MAKE A DEPOSIT WITH THE COUNTY ENGINEER FROM THE SANITARIAN BUILDING, 125 SO. BROADWAY SUFFICIENT TO COVER THE COST OF CONSTRUCTION INSPECTION AND RECORD PLANS.

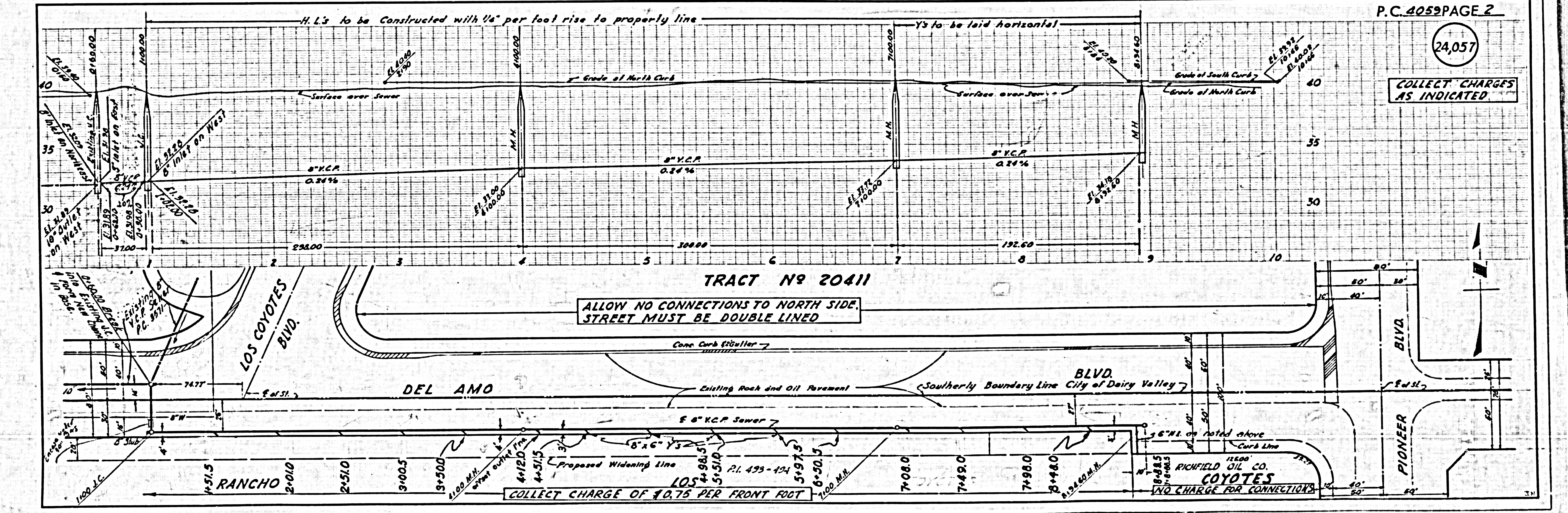
APPROVAL OF THIS PLAN BY THE COUNTY OF LOS ANGELES DOES NOT CONSTITUTE A REPRESENTATION AS TO THE ACCURACY OF THE LOCATION OF OR THE EXISTENCE OR NON-EXISTENCE OF ANY UNDERGROUND UTILITY PIPES, OR STRUCTURE WITHIN THE LIMITS OF THIS PROJECT THE NOTE APPLIES TO ALL PAGES.

IF WORK IS TO BE DONE ON A STATE HIGHWAY, A PERMIT MUST BE OBTAINED FROM THE STATE OF CALIFORNIA, DIVISION OF HIGHWAYS, 128 SOUTH SPRING STREET.

COUNTY OF LOS ANGELES, CALIFORNIA

APPROVED, JOHN A. LAMBIE, COUNTY ENGINEER
 APPROVED, A. M. RAWN, CHIEF ENGINEER
 BY A. P. Collins SANITATION ENGINEER
 BY J. P. Matthews OFFICE ENGINEER
 CHECKED BY R. L. ... 2-12-56
 OFFICE OF COUNTY ENGINEER, REG. C. E. NO. 7860

APPROVED, JOHN A. LAMBIE, CITY ENGINEER OF DAIRY VALLEY
 BY A. P. Collins SANITATION ENGINEER



P.C. 4059 PAGE 2
 (24,057)
 COLLECT CHARGES AS INDICATED