

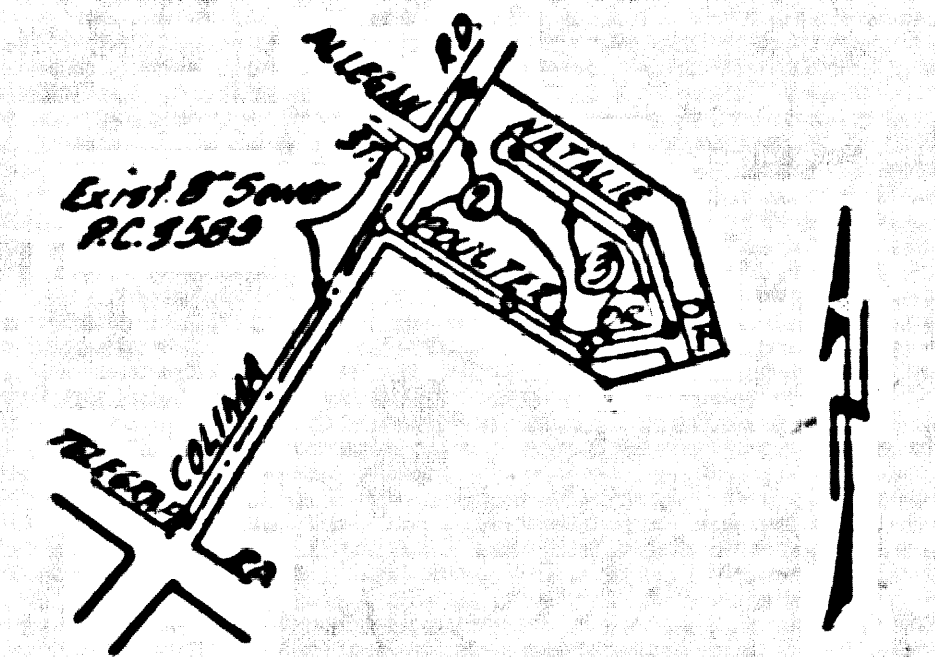
B.M. 511292 E1220.782  
 Spk. in @ Weather 3' N.E. of E. Int. of  
 Miller Rd & Colima Rd.

WHITTIER BLDG. DIST. NO. 11

PROFILE ALIGNMENT AND GRADE OF P.C. 4060  
 SANITARY SEWERS PAGE 1  
 TO BE CONSTRUCTED IN  
 TRACT No 22267 (23,743)

- NOTE:**
- PROVIDE STAKES ON THE PROPERTY LINE OR PROPERTY LINES PRODUCED AT RIGHT ANGLES TO THE SEWER LINE AT THE CENTER LINE OF EACH MANHOLE.
  - NO REPRESENTATIVE OF THE COUNTY ENGINEER WILL SHOW OR LAY OUT ANY PORTION OF THE WORK.
  - THE OWNER OR HIS AUTHORIZED REPRESENTATIVE SHALL FURNISH THE COUNTY ENGINEER WITH GRAD SHEETS AND STATIONING FOR ALL HOUSE LATERALS AND 7 BRANCHES AND SHALL PROVIDE STAKES FOR THEM AT THEIR PROPER LOCATIONS WITH STATIONING PLAINLY MARKED. ANY CHANGE IN LOCATION SHALL BE REQUESTED IN WRITING BY THE OWNER OR HIS REPRESENTATIVE.
  - NO REVISIONS SHALL BE MADE IN THESE PLANS WITHOUT THE APPROVAL OF THE COUNTY ENGINEER.
  - USE STANDARD MANHOLES FRAMES AND COVERS, 24-117, EXCEPT AS NOTED.
  - USE STANDARD SLOTTED PIPE EXCEPT AS NOTED.
  - USE CURBED SLOTTED PIPE FOR ALL VENTING CLAY PIPE JOINTS.
  - REINFORCE ALL BRICKS WITHIN RAISED AREA TO MEET L. A. COUNTY ROAD DEPT. OR CALIF. STATE HIGHWAY DEPT. SPECIFICATIONS BY ACCORDANCE WITH PERMITS.
  - ENCASE FOUR FEET OF SEWER AT POINTS OF INTERFERENCE WITH POLES, 6-6-119.
  - HOUSE LATERALS TO BE CONSTRUCTED WITH BRICKS AT PROPERTY LINE 6" FROM SHOWN CURB GRADE EXCEPT AS NOTED.
  - ALL STRUCTURES SHALL BE BRICK SEWER STRUCTURES, S.A. 104, EXCEPT AS NOTED.
  - FOR ALLOWABLE MESSAGE TYP USE FORMULA NO. 1 SPEC'S, SEC. 21.
  - MANHOLES TO BE UNIMPROVED EXCEPT AS NOTED TO BE 6" ABOVE FINISHED GRADE.
  - The Private Engineer is to furnish the House Lateral depth at the property line below the top of curb elevation for each House Lateral on the Grade Sheet.

PRIVATE CONTRACT NO. 4060  
 W.S. 34  
 2 SHEETS, 3 PAGES  
 SCALE: VERT. 1" = 4' HORIZ. 1" = 40'  
 JULY, 1956  
 PREPARED BY THE OFFICES OF  
**OLSON SURVEYING SERVICE**  
 REG. C. E. NO. 7220  
 FOR LEGEND SEE PLAN NO. S-A-64



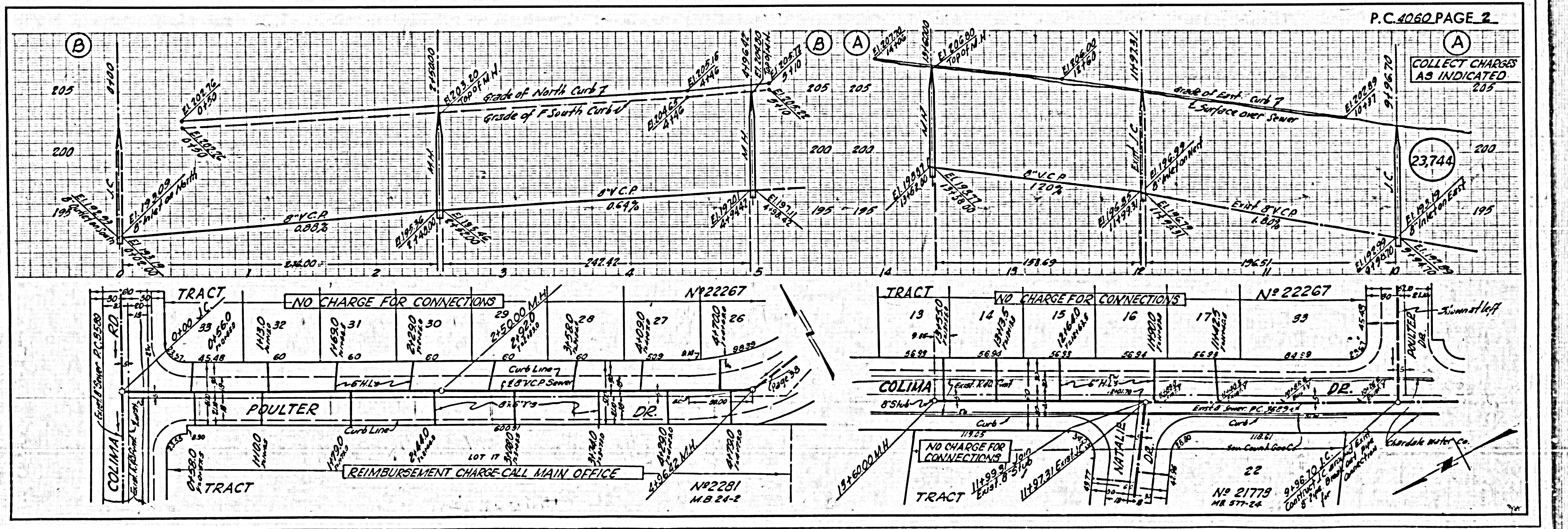
INDEX MAP  
 TRACT No 22267 PC. 4060  
 SCALE 1" = 600'

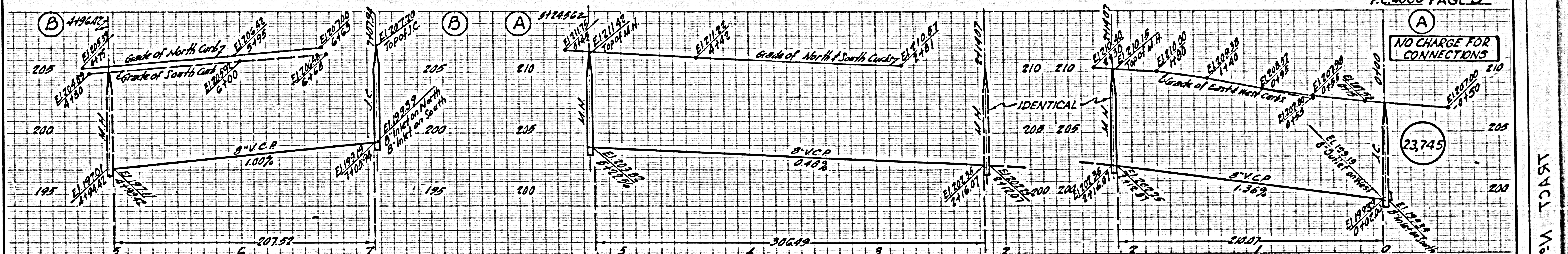
COLLECT CHARGES  
 AS INDICATED  
 -S.K. Wade - 3-7-56

**NOTES:**  
 GRADES TO WHICH THIS SANITARIUM IS TO BE CONSTRUCTED ARE SHOWN ON PLANS AND PROFILES. GRADE POINTS FOR TOP OF CURBS, CENTER LINE OF STREETS, OR CENTER LINE OF ALLEYS ARE SHOWN BY CIRCLES ON PROFILES. AT ALL POINTS BETWEEN DESIGNATED POINTS THE GRADE SHALL BE ESTABLISHED SO AS TO CONFORM TO A STRAIGHT LINE DRAWN BETWEEN SAID DESIGNATED POINTS.  
 ELEVATIONS ARE IN FEET ABOVE M.S.L. PER THE LEVEL DATUM OF 1929.  
 THE DRAWINGS AND THE DATA HEREON AND HEREIN ARE A PART OF THE SPECIFICATIONS.  
 WORK SHALL BE CONSTRUCTED ACCORDING TO SPECIFICATIONS ON FILE IN THE OFFICE OF THE COUNTY ENGINEER AND SHALL BE PROSECUTED ONLY IN THE PRESENCE OF THE COUNTY ENGINEER.  
 BEFORE WORK CAN BE STARTED, THE CONTRACTOR MUST OBTAIN A PERMIT TO EXCAVATE IN THE COUNTY STREETS FROM THE L. A. COUNTY ROAD DEPT., 128 W. 7TH ST. AND MAKE A DEPOSIT WITH THE COUNTY ENGINEER, ROOM 204 MAIN AMERICAN BUILDING, 224 SO. BROADWAY, SUFFICIENT TO COVER THE COST OF CONSTRUCTION INSPECTION AND RECORD PLANS.  
 APPROVAL OF THE PLAN BY THE COUNTY OF LOS ANGELES DOES NOT CONSTITUTE A REPRESENTATION AS TO THE ACCURACY OF THE LOCATION OR THE EXISTENCE OR NON-EXISTENCE OF ANY UNDERGROUND BRICK PIPE, OR STRUCTURE WITHIN THE LIMITS OF THIS PROJECT. THIS NOTE APPLIES TO ALL PAGES.  
 IF WORK IS TO BE DONE IN A STATE HIGHWAY, A PERMIT MUST BE OBTAINED FROM THE STATE OF CALIFORNIA, DIVISION OF HIGHWAYS, 128 SOUTH SPRING STREET.

COUNTY OF LOS ANGELES, CALIFORNIA  
 APPROVED, JOHN A. LAMBE, COUNTY ENGINEER  
 APPROVED, A. M. RAWL, CHIEF ENGINEER  
 BY *[Signature]* BY *[Signature]*  
 CHECKED BY *[Signature]*  
 OFFICE OF COUNTY ENGINEER, 128 S. SPRING ST., LOS ANGELES, CALIF.

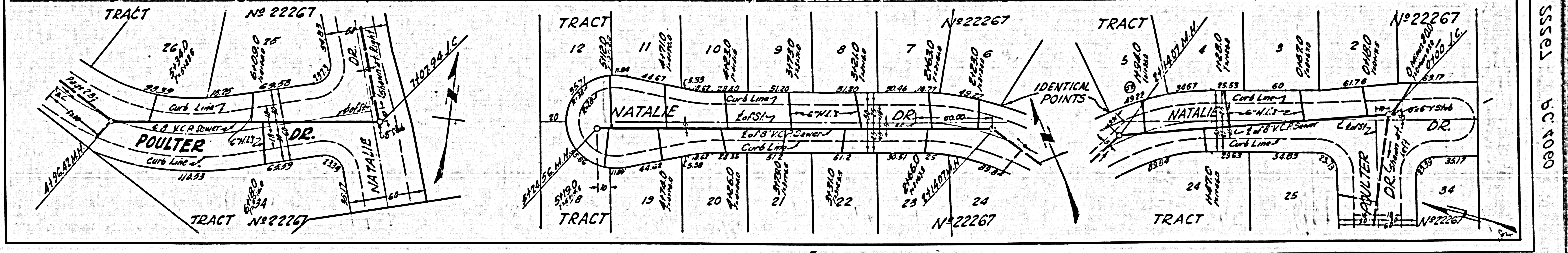
Checked 12-7-56 W. W. W.





NO CHARGE FOR CONNECTIONS

23745



TRACT No. 22267 BC 4060