

WHITTIER BLDG. DIST. NO. 11

PROFILE ALIGNMENT AND GRADE OF P.C. 4063
 SANITARY SEWERS PAGE 1
 TO BE CONSTRUCTED IN

TRACT No. 20814

PRIVATE CONTRACT NO. 4063

W.S. 33

2 SHEETS, 4 PAGES

24,244

SCALE: 1" = 4'

APR, 1956

PREPARED IN THE OFFICES OF

HEMMERER ENGINEERING CO., INC.

By: Hans C. Hemmerer REG. C. E. NO. 8244

FOR LEGEND SEE PLAN NO. S-A-64

- NOTES
- PROVIDE STAKES ON THE PROPERTY LINE OR PROPERTY LINES PRODUCED AT 90° ANGLES TO THE SEWER LINE AT THE CENTER LINE OF EACH MANHOLE.
 - NO REPRESENTATIVE OF THE COUNTY ENGINEER WILL SURVEY OR LAYOUT ANY PORTION OF THE WORK.
 - THE OWNER OR HIS AUTHORIZED REPRESENTATIVE SHALL FURNISH THE COUNTY ENGINEER WITH GRADE SHEETS AND STATION FOR ALL HOUSE LATERALS AND BRANCHES AND SHALL PROVIDE STAKES FOR THEM AT THEIR PLACED LOCATIONS WITH STATIONING AND PLAIN MARKERS. ANY CHANGE IN LOCATION SHALL BE REQUESTED IN WRITING BY THE OWNER OR HIS REPRESENTATIVE.
 - NO REVISIONS SHALL BE MADE IN THESE PLANS WITHOUT THE APPROVAL OF THE COUNTY ENGINEER.
 - USE STANDARD MANHOLE FRAMES AND COVERS, S.A. 117, EXCEPT AS NOTED.
 - USE STANDARD 8" DIA. RIV. EXCEPT AS NOTED.
 - USE CEMENT MORTAR FOR ALL VITRIFIED CLAY PIPE JOINTS.
 - RESURFACE ALL TRENCH WITHIN PAVED AREA TO MEET L. A. COUNTY ROAD DEPT. OR CALIF. STATE HIGHWAY DEPT. REQUIREMENTS BY ACCORDANCE WITH PERMITS.
 - SHOULDER POLE PART OF SEWER AT POINTS OF INTERFERENCE WITH POLES, S.A. 119.
 - HOUSE LATERALS TO BE CONSTRUCTED WITH INVERTS AT PROPERTY LINE 6" FEET BELOW CURB GRADE EXCEPT AS NOTED.
 - ALL STRUCTURES SHALL BE BRICK SEWER STRUCTURES, S.A. 104, EXCEPT AS NOTED.
 - FOR ALLOWABLE LEAKAGE TEST USE FORMULA NO. 1, SPECS. SEC. 54.
 - MANHOLE TOPS IN UNIMPROVED RIGHTS-OF-WAY TO BE 6" ABOVE FINISHED GRADE.
 - THE PRIVATE ENGINEER IS TO FURNISH THE HOUSE LATERAL DEPTH AT THE PROPERTY LINE BELOW THE TOP OF CURB ELEVATION FOR EACH HOUSE LATERAL, ON THE GRADE SHEET.

S. M. C. 38-3 HACIENDA BLVD & LA ORANGE CO. LINE
 S. 1/4 SEC. 8 34th STATION FROM 3' 00" W. END BLVD
 AND PROCEED BY 120° CORNER TO 1/4 CORNER
 COUNTY SURVEYORS' RECORDS, VOL. 1852 A.C.J.
 ELEV. 425.000, L.A. CO. MAPS, P. 1833-B

NO CHARGE
 FOR CONNECTIONS
 Sx Wide 10-1-56

NOTE: GRADES TO WHICH THIS IMPROVEMENT IS TO BE CONSTRUCTED ARE SHOWN ON PLANS AND PROFILE GRADE POINTS FOR TOP OF CURB, CENTER LINE OF STREET, OR CENTER LINE OF ALLEYS AND SHOWN BY CIRCLES ON PROFILES AT ALL POINTS BETWEEN DESIGNATED POINTS THE GRADE SHALL BE ESTABLISHED SO AS TO CONFORM TO A STRAIGHT LINE DRAWN BETWEEN SAID DESIGNATED POINTS.

REVISIONS ARE IN PINK ABOVE S.E.C. 688 RE LEVEL BATH AS OF 1956.

THIS DRAWING AND THE DATA HEREON ARE HEREBY MADE A PART OF THE SPECIFICATIONS.

WORK SHALL BE CONSTRUCTED ACCORDING TO SPECIFICATIONS ON FILE IN THE OFFICE OF THE COUNTY ENGINEER AND SHALL BE PROSECUTED ONLY IN THE PRESENCE OF THE COUNTY ENGINEER.

BEFORE WORK CAN BE STARTED, THE CONTRACTOR MUST OBTAIN A PERMIT TO EXCAVATE IN COUNTY STREETS FROM THE L. A. COUNTY ROAD DEPT. FOR 10' 2" AND MUST MAKE A DEPOSIT WITH THE COUNTY ENGINEER, ROOM 224 PAN AMERICAN BUILDING 133 SO. BROADWAY SUBJECT TO COVER THE COST OF CONSTRUCTION INSPECTION AND RECORD PLANS.

APPROVAL OF THIS PLAN BY THE COUNTY OF LOS ANGELES DOES NOT CONSTITUTE A REPRESENTATION AS TO THE ACCURACY OF THE LOCATION OF OR THE EXISTENCE OR NON-EXISTENCE OF ANY UNDERGROUND UTILITY PIPE, OR STRUCTURE WITHIN THE LIMITS OF THIS PROJECT THIS NOTE APPLIES TO ALL PAGES.

IF WORK IS TO BE DONE IN A STATE HIGHWAY, A PERMIT MUST BE OBTAINED FROM THE STATE HIGHWAY DIVISION OF HIGHWAYS, 120 SOUTH SPRING STREET.

COUNTY OF LOS ANGELES, CALIFORNIA

APPROVED, JOHN A. LAMBE, COUNTY ENGINEER

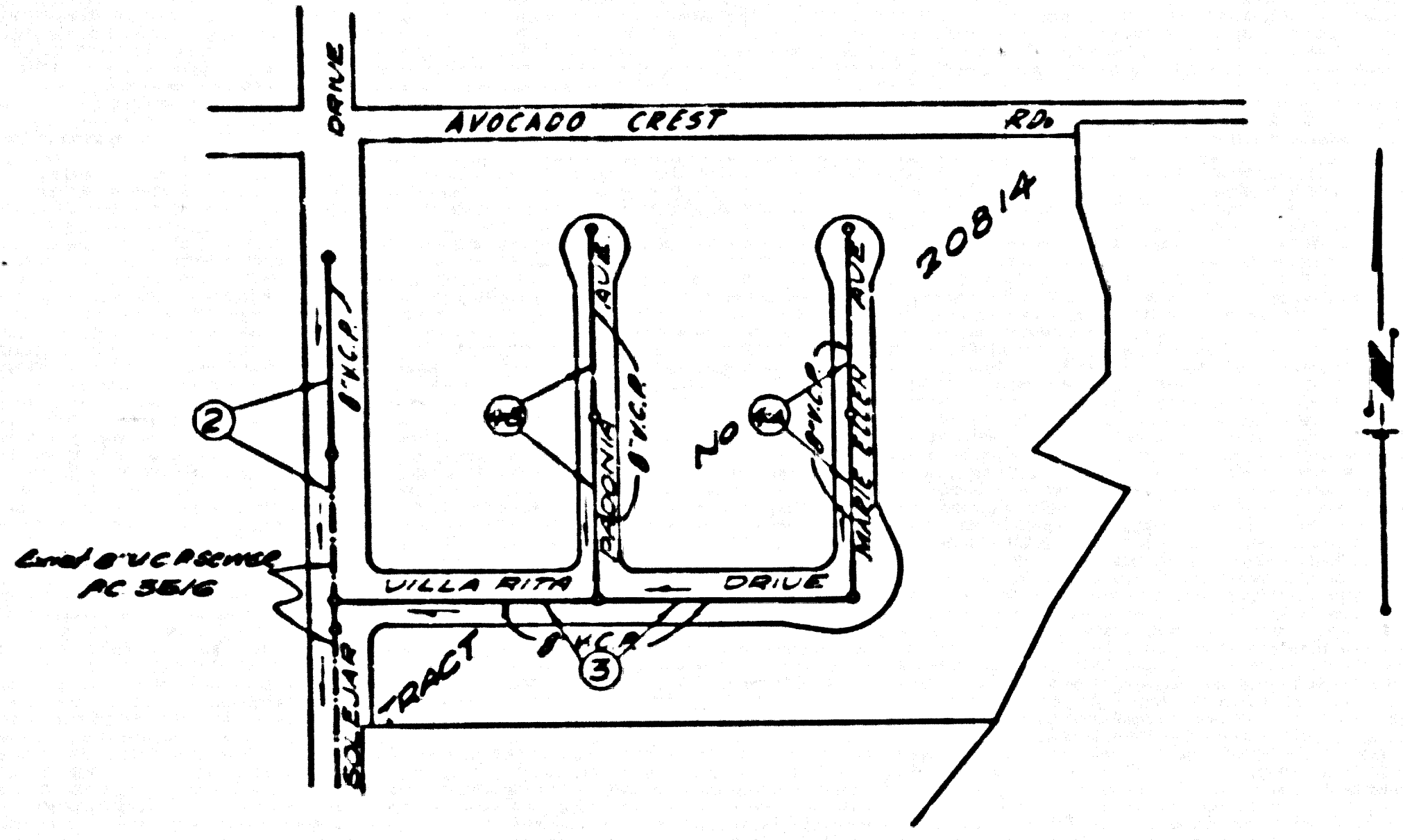
APPROVED, A. M. RAWN, CHIEF ENGINEER

By: A. P. Collins SANITATION ENGINEER

By: J. P. Thompson OFFICE ENGINEER

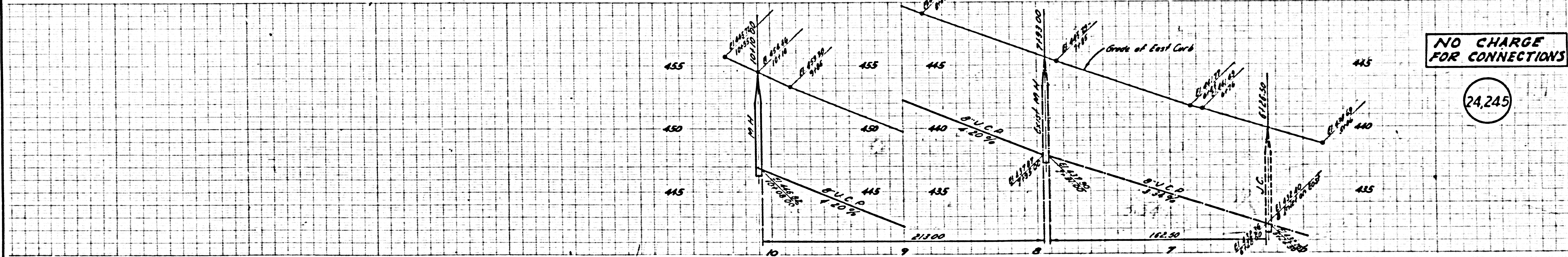
CHECKED BY: R. P. Kuban 10-15-56

OFFICE OF COUNTY ENGINEER, REG. C. E. NO. 7960



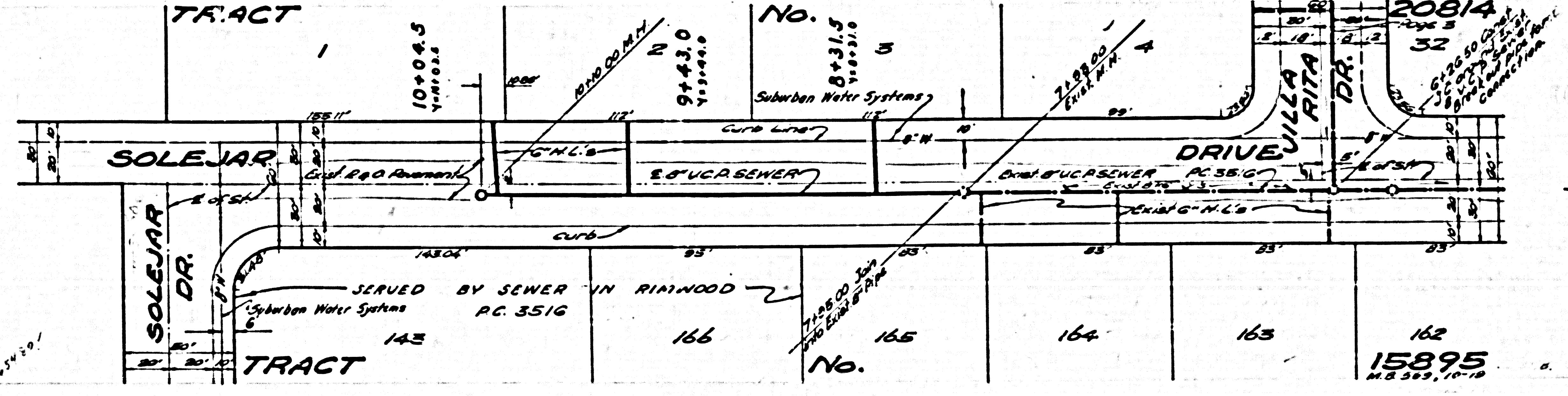
INDEX MAP
 TRACT No. 20814
 P.C. 4063 Scale: 1"=200'

P.C. 4063 PAGE 2



NO CHARGE
 FOR CONNECTIONS

24,245

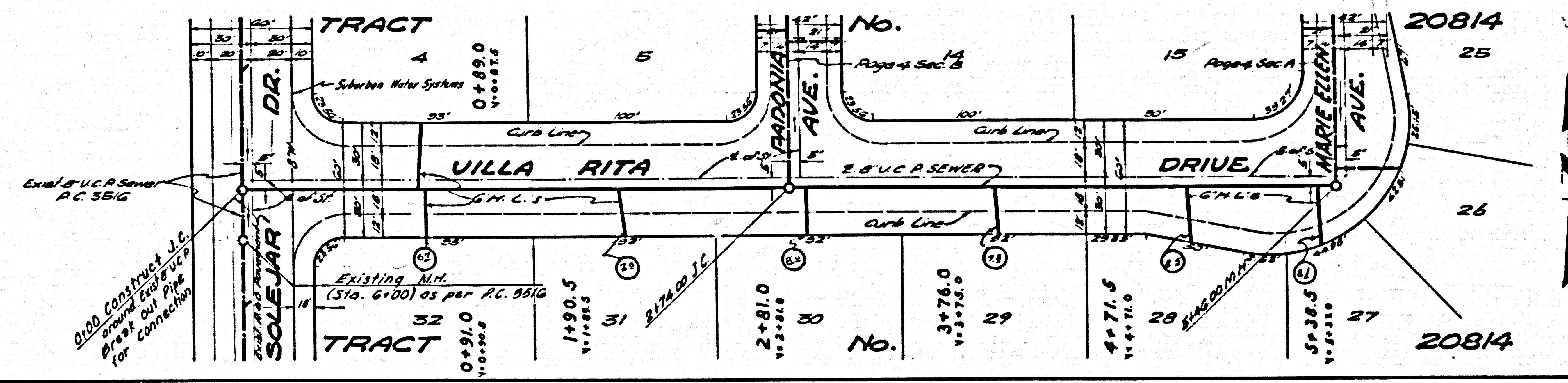
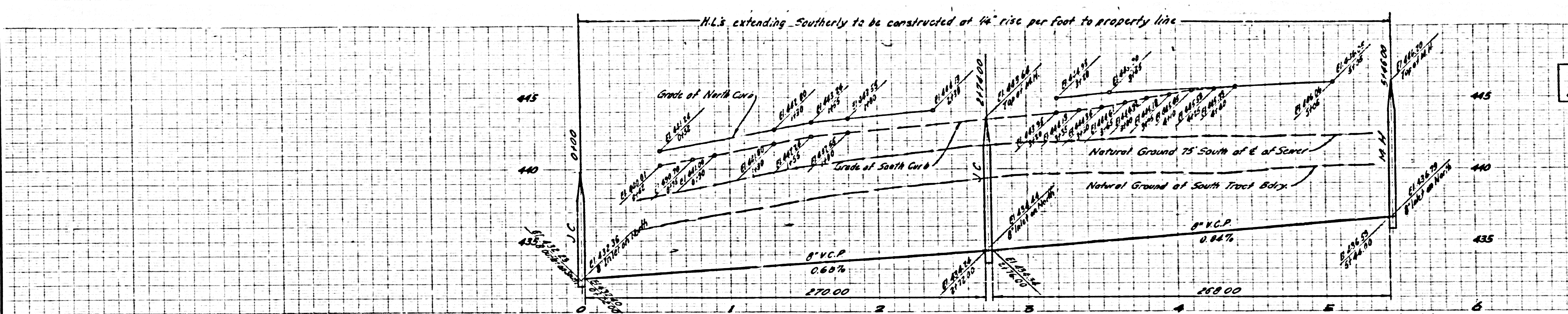


15895
 M.S. 255, 10-19

R.L.

NO CHARGE FOR CONNECTIONS

24,246



NO CHARGE FOR CONNECTIONS

24,247

