

LENNOX BLDG. DIST. NO 7

- NOTE:**
- Provide stakes on the property lines or property lines produced at right angles to the sewer line at the center line of each manhole.
- No representative of the County Engineer will survey or layout any portion of the work.
- The owner or his authorized representative shall furnish the County Engineer with grade sheets and stations for all house laterals and Y branches and shall provide stakes for them at their proper locations with stationing plainly marked. Any change in location shall be requested in writing by the owner or his representative.
- No revisions shall be made in these plans without the approval of the County Engineer.
1. Use standard manhole frames and covers, S-a-117.
 2. Use standard strength pipe except as noted.
 3. Use cement mortar for all vitrified clay pipe joints.
 4. Resurface all trench within paved area to meet L.A. County Road Dept. or California State Highway Dept. requirements in accordance with permit.
 5. Excavate four feet of cover at points of interference with poles, S-a-119.
 6. House laterals to be constructed with inverts at property line 6 feet below curb grade except as noted.
 7. All structures shall be brick sewer structures, S-a-104.
 8. For allowable leakage test, use Formula No. 1, Spec's., Sec. 84.
 9. Manhole tops in unimproved Rights-Of-Way to be 6" above finish grade.
 10. THE PROPERTY ENGINEER IS TO PROVIDE THE HOUSE LATERAL DEPTH AT THE PROPERTY LINE BELOW THE TOP OF CURB ELEVATION FOR EACH HOUSE LATERAL, ON THE SEWER MAPS.
 11. Figures in circles at ends of House Laterals indicate depth below $\frac{1}{2}$ of St.

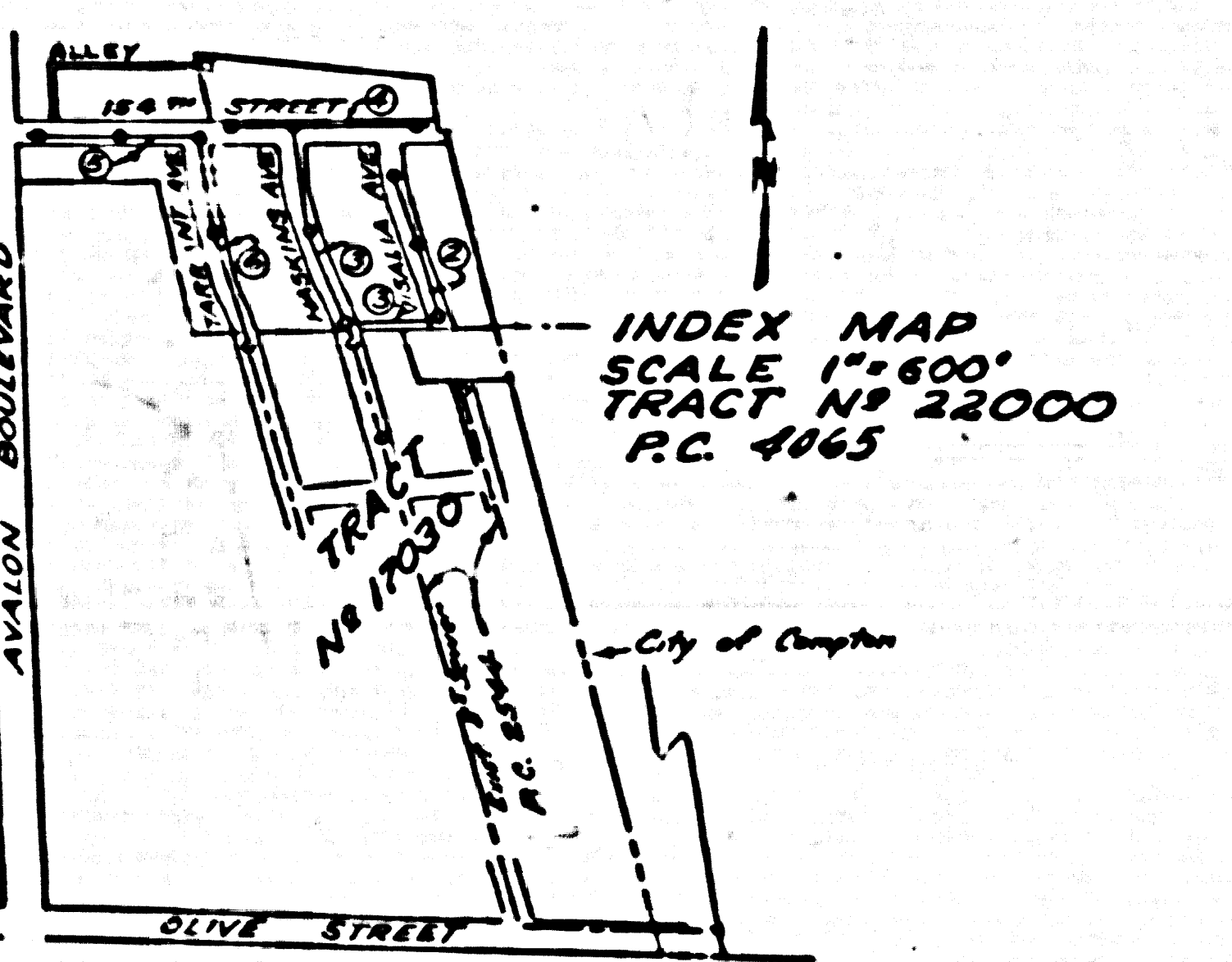
IR.M.
S.V. 3256 1/4 N. W. 1/4
Section 32, T. 11 N. R. 4 E.
C.S. 201, 61 N.W. 1/4
1/4 of 1/4 of Section
Elev. 15.66' (1954 adj.)

TABLE

SHEET NO	PAGES
1	1-3
2	4-6

CONNECTION CHARGES AS INDICATED
R.S. Kubler 7-10-56

Dated 1-3-57 W. L. ...



PROFILE, ALIGNMENT AND GRADE OF
SANITARY SEWERS
TO BE CONSTRUCTED IN
TRACT NO 22000

P.C. 4065
PAGE 1

23,842
(6)

PRIVATE CONTRACT NO. 4065
W. S. 26
2 SHEETS 6 PAGES

Scale: VERT. 1"=4'
HORIZ. 1"=40'
NOV. 1955
PREPARED IN THE OFFICES OF
JENNINGS ENGINEERING CO.

D. C. Hallbert
Reg. C. E. No. 7871
FOR LEGEND SEE PLAN NO. S-a-64

NOTE:

Grades to which this improvement is to be constructed are shown on plans and profiles. Grade points for top of curbs, center line of streets, or center line of alleys are shown by circles on profiles. At all points between designated points the grade shall be established so as to conform to a straight line drawn between said designated points.

Elevations are in feet above U.S.C. 163. See Lines Drawn as 1957.

This drawing and the data herein are hereby made a part of the specifications.

Work shall be constructed according to specifications on file in the office of the County Engineer and shall be prosecuted only in the presence of the County Engineer.

Before work can be started, the contractor must obtain a permit to excavate in County streets from the L.A. County Road Dept., 108 W. 2nd St. and make a deposit with the County Engineer $\$100.00$ (one hundred dollars) sufficient to cover the cost of construction inspection and record plans.

Approval of this plan by the County of Los Angeles does not constitute a representation as to the accuracy of the location or the existence or non-existence of any underground utility, pipe, or structure within the limits of this project. This note applies to all sheets.

If work is to be done in a State Highway, a permit must be obtained from the State of California, Division of Highways, 120 South Spring Street.

COUNTY OF LOS ANGELES, CALIFORNIA

Approved, John A. Lambus County Engineer
Approved, A. M. Ravn
CHIEF ENGINEER, SAN DIST. NO. 8

D. P. ...
Sanitation Engineer
Checked by: R.S. Kubler 7-10-56
Office of County Engineer, Reg. C. E. No. 7860.

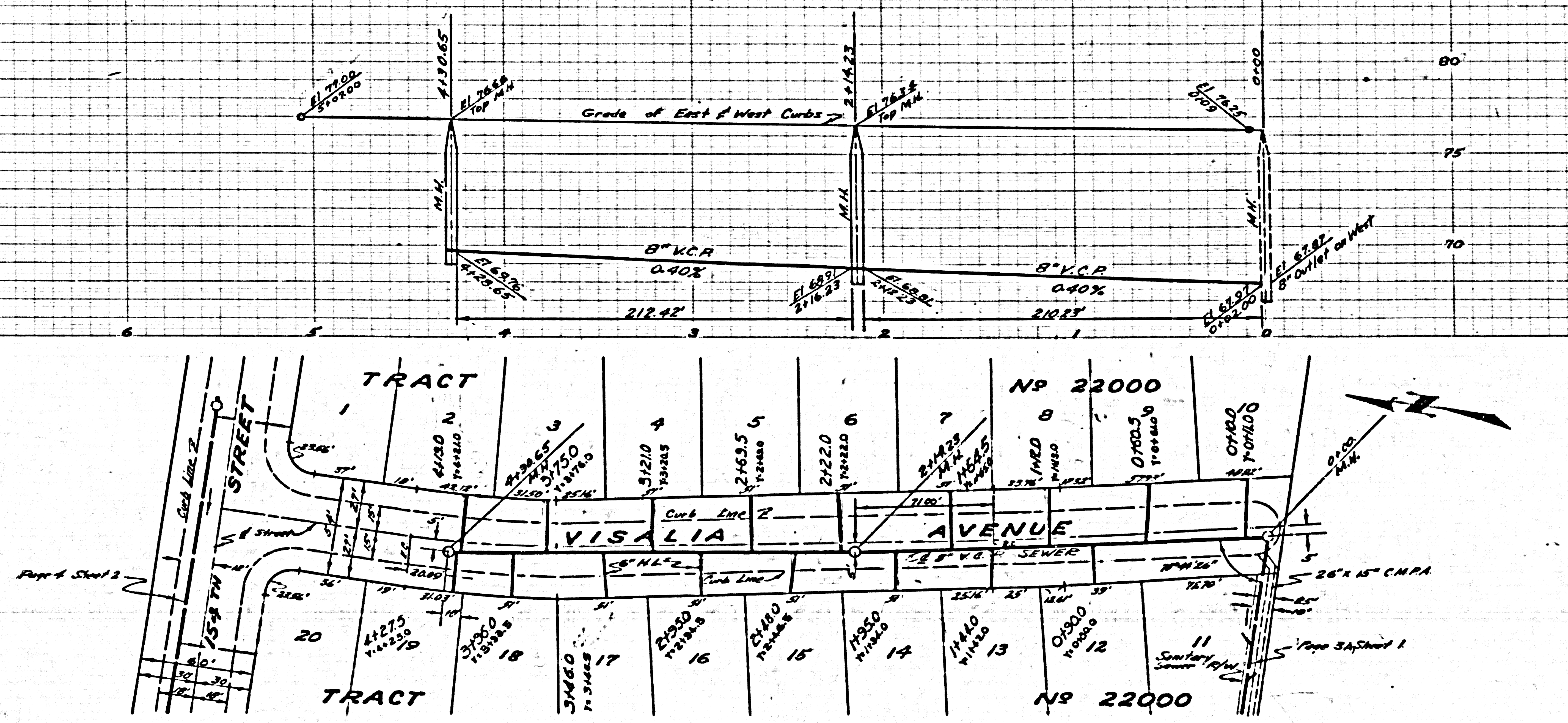
TRACT NO 22000
P.C. 4065

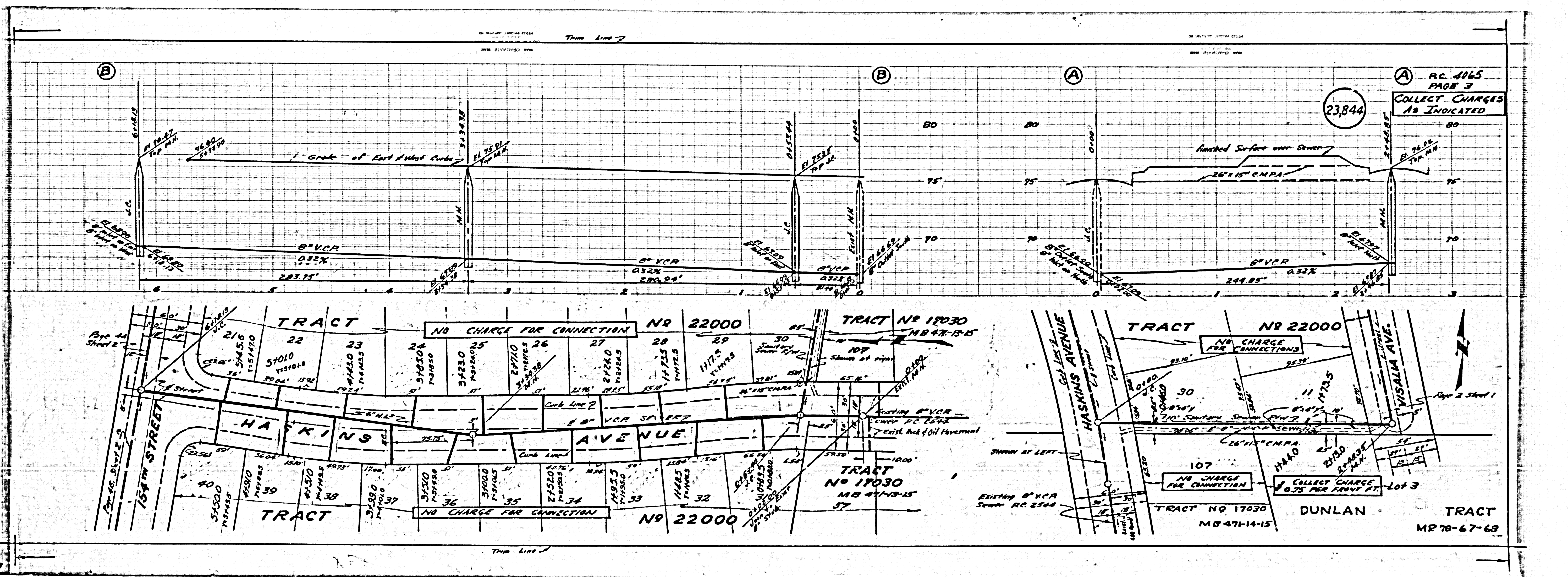
rd

PC. 4065
PAGE 2

NO CHARGE
FOR CONNECTIONS

23843





AC. 2065
PAGE 3
COLLECT CHARGES
AS INDICATED

23,844

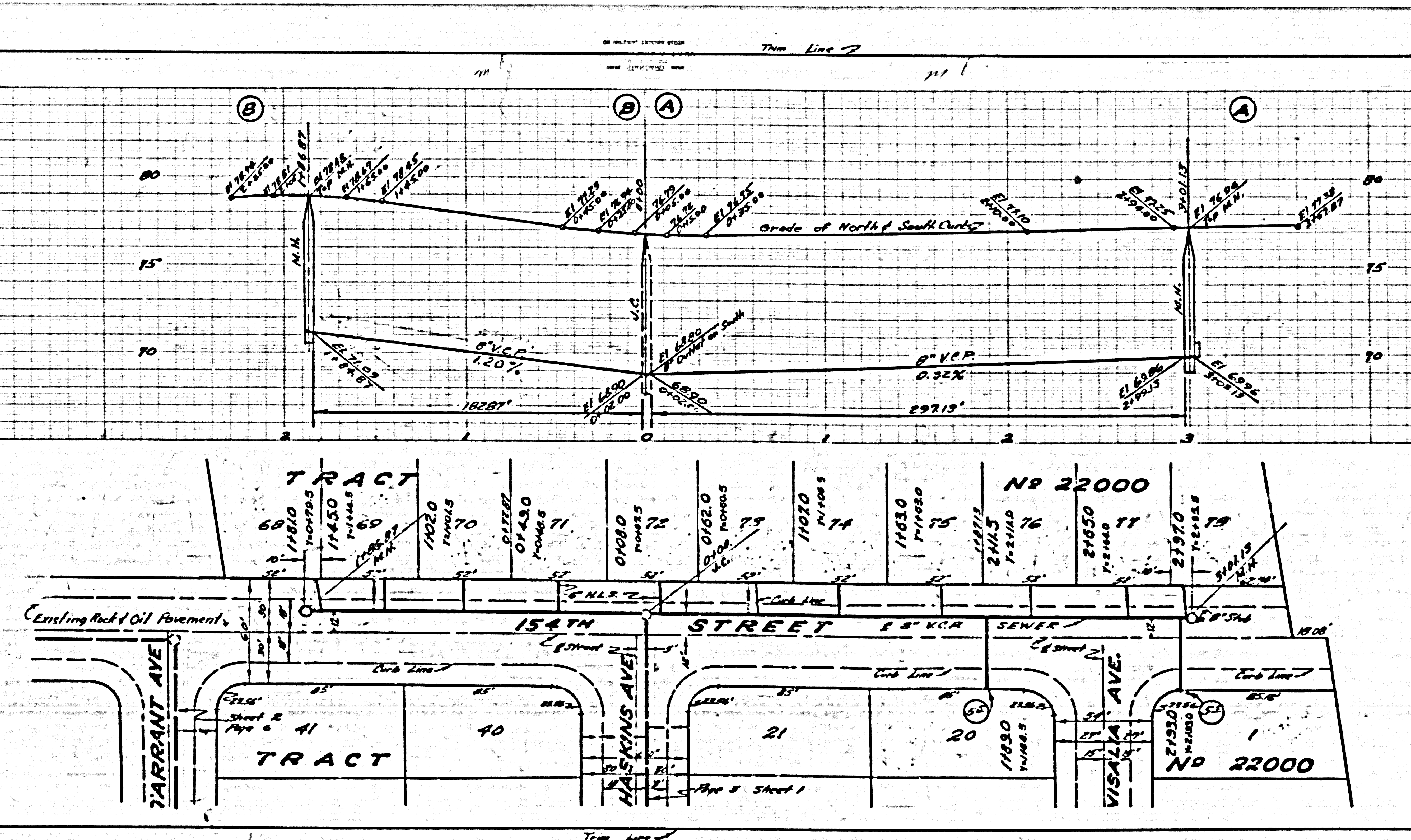
TRACT
DUNLAN
TRACT
MR 78-67-68

Time Line 7

P.C. 4065
PAGE 4

NO CHARGE
FOR CONNECTIONS

23,845



P.C. 4065
PAGE 4

NO CHARGE
FOR CONNECTIONS

23,845

P.C. 4065
PAGE 4

NO CHARGE
FOR CONNECTIONS

23,845

RC 4065
PAGE 5
COLLECT CHARGES
AS INDICATED

23846

