

B.M. 57-964 E1.91525
 L. & T. 1' N. of B.C.R. N.W. Cor.
 Woodruff Ave & Foster Rd.

DOWNNEY BLDG. DIST. NO. 41

PROFILE ALIGNMENT AND GRADE OF P.C. 4067
 SANITARY SEWERS PAGE 1

TO BE CONSTRUCTED IN
 TRACT NO. 19953 (23510)

PRIVATE CONTRACT NO. 4067

W.S. 33

1 SHEET, 2 PAGES

SCALE: 1" = 40' HORIZ. 1" = 4' VERT. JUNE, 1956

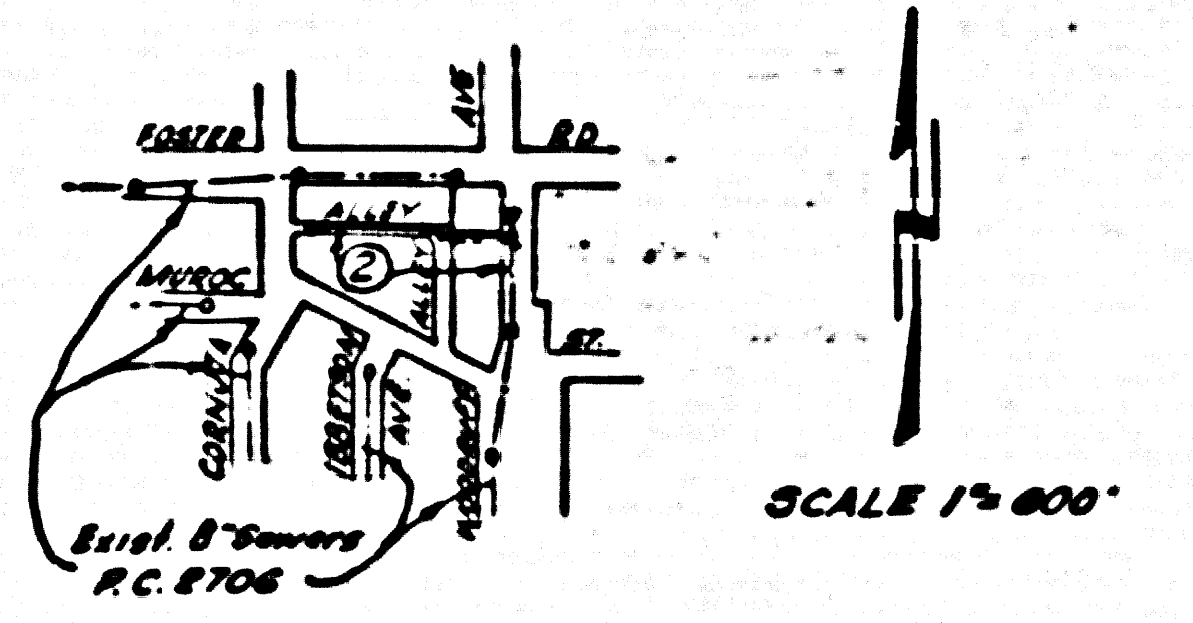
PREPARED IN THE OFFICES OF
 SEABOARD ENGINEERING CO.

Louis M. Nerenbaum
 REG. C. E. NO. 6358

FOR LEGEND SEE PLAN NO. S-A-64

- NOTE:
 PROFILE STAKES ON THE PROPERTY LINE OR PROFILES LINES PRODUCED AT RIGHT ANGLES TO THE SEWER LINE AT THE CENTER LINE OF EACH MANHOLE.
 NO REPRESENTATIVE OF THE COUNTY ENGINEER WILL SURVEY OR LAYOUT ANY PORTION OF THE WORK.
 THE OWNER OR HIS AUTHORIZED REPRESENTATIVE SHALL FURNISH THE COUNTY ENGINEER WITH GRADE SHEETS AND STATION FOR ALL HOUSE LATERALS AND Y BRANCHES AND SHALL PROVIDE STAKES FOR THEM AT THESE LOCATIONS WITH STATIONING AND PLAINLY MARKED. ANY CHANGE IN LOCATION SHALL BE REQUESTED BY WRITING BY THE OWNER OR HIS REPRESENTATIVE.
 NO REVISIONS SHALL BE MADE IN THESE PLANS WITHOUT THE APPROVAL OF THE COUNTY ENGINEER.
1. USE STANDARD MANHOLE FRAMES AND COVERS, S-A-117, EXCEPT AS NOTED.
 2. USE STANDARD STRENGTH PIPE FITTINGS AS NOTED.
 3. USE COUNTY MORTAR FOR ALL VITRIFIED CLAY PIPE JOINTS.
 4. RESURFACE AND FINISH WITHIN PAVED AREAS TO MEET L. A. COUNTY ROAD DEPT., OR CALIF. STATE HIGHWAY DEPT. REQUIREMENTS IN ACCORDANCE WITH PLANS.
 5. INDICATE POINTS OF SEWER AT POINTS OF INTERFERENCE WITH POLES, S-A-119.
 6. HOUSE LATERALS TO BE CONSTRUCTED WITH INVERTS AT PROPERTY LINE, 6 FEET BELOW CURB GRADE EXCEPT AS NOTED.
 7. ALL STRUCTURES SHALL BE BRICK REWER STRUCTURES, S-A-116, EXCEPT AS NOTED.
 8. FOR ALLOWABLE LEAKAGE TEST USE FORMULA NO. 1, SPECS., SEC. II.
 9. MANHOLE POLES IN UNIMPROVED RIGHTS-OF-WAY TO BE 6" ABOVE FINISHED GRADE.
 10. The Private Engineer is to furnish the House Lateral with at the property line below, the top of curb elevation or the elevation of 6" of Alley for each House Lateral on the Grade Sheet.

NO CHARGE FOR CONNECTIONS
 S.A. 6-28-56



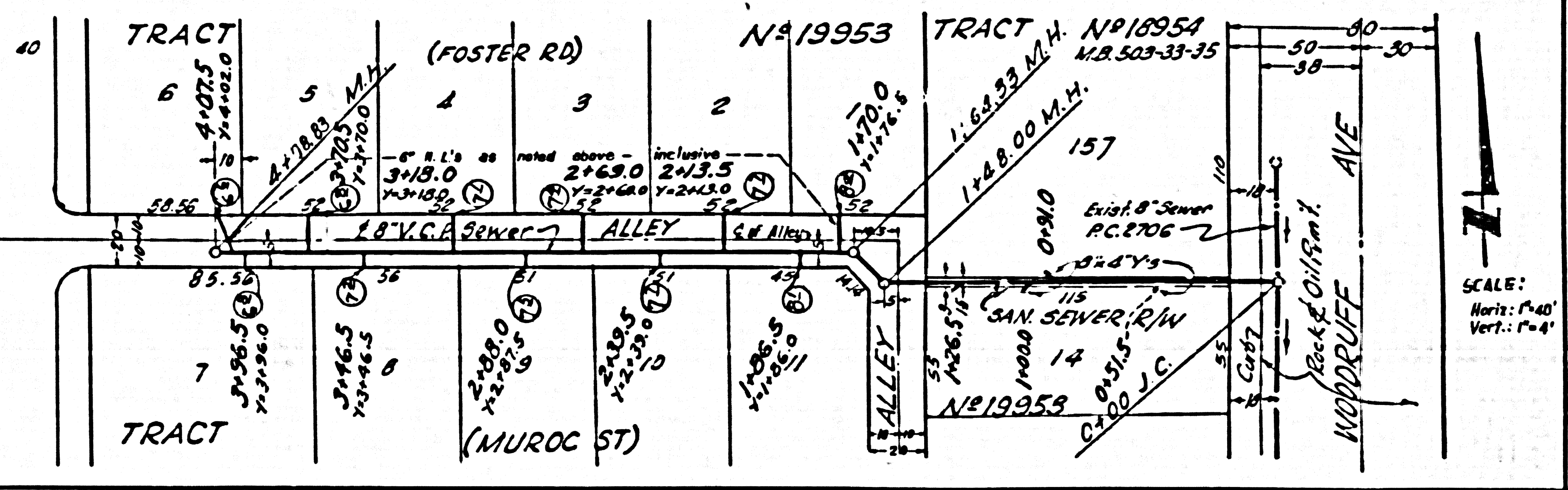
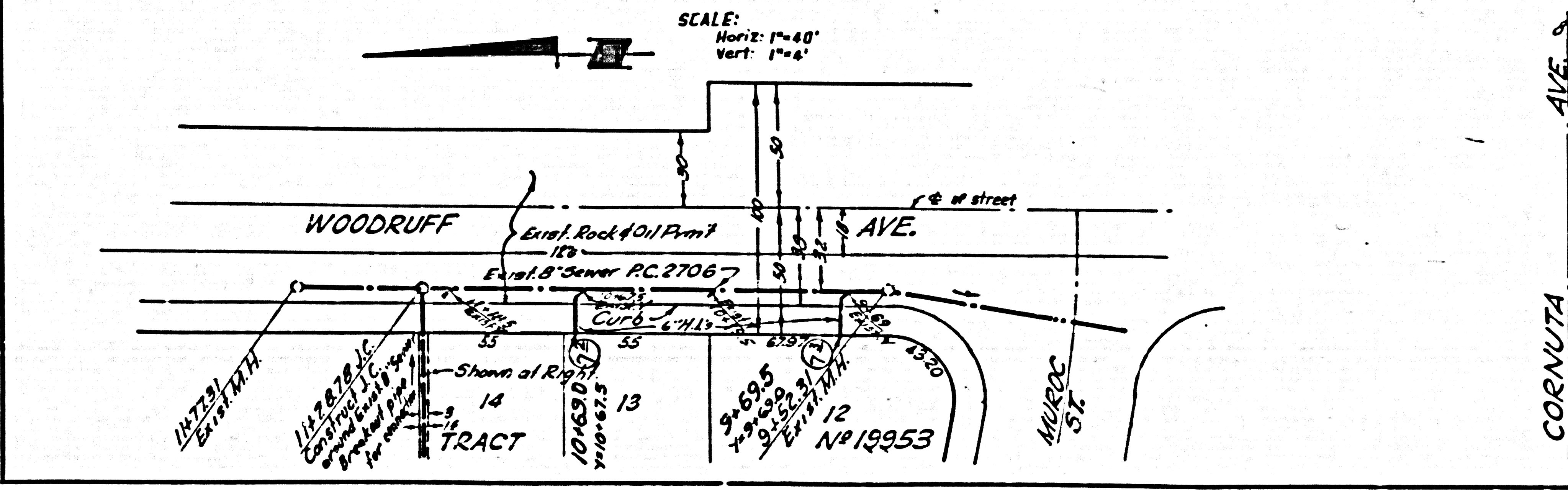
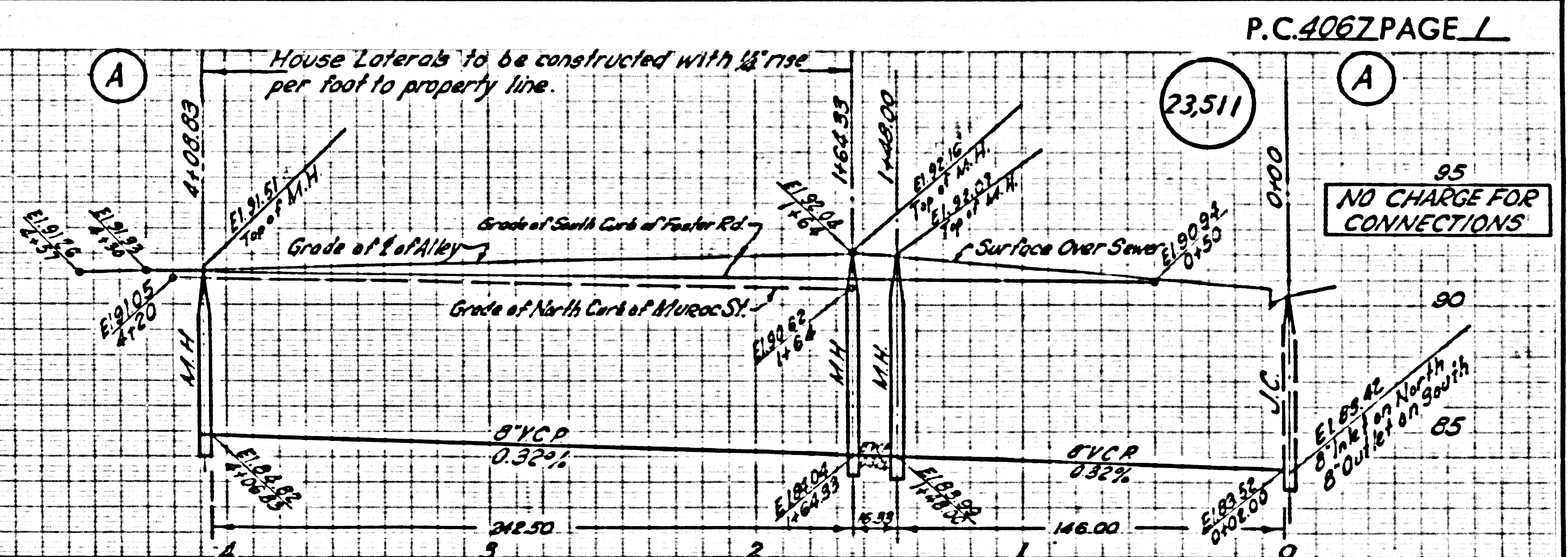
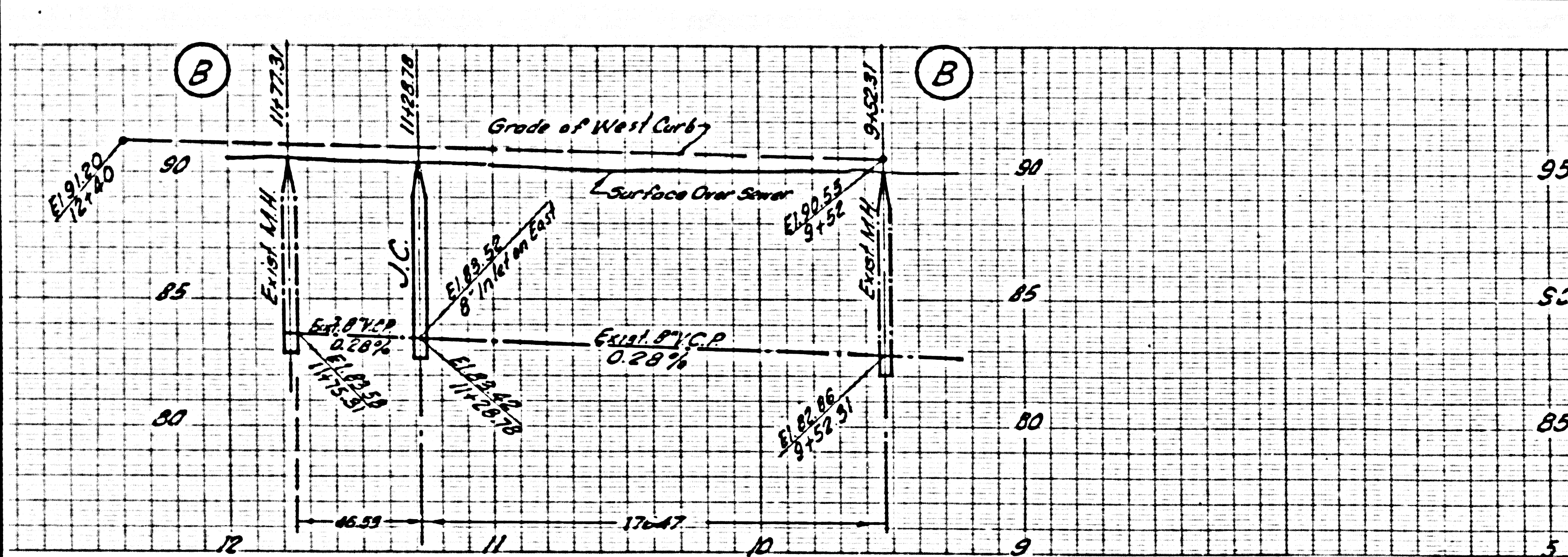
INDEX MAP
 TRACT NO. 19953 P.C. 4067

NOTE:
 GRADES TO WHICH THIS IMPROVEMENT IS TO BE CONSTRUCTED ARE SHOWN ON PLANS AND PROFILES. GRADE POINTS FOR TOP OF CURBS, CENTER LINE OF DRIVE OR CENTER LINE OF ALLEYS ARE SHOWN BY CIRCLES ON PROFILES. AT ALL POINTS BETWEEN INDICATED POINTS THE GRADE SHALL BE ESTABLISHED SO AS TO CONFORM TO A STRAIGHT LINE DRAWN BETWEEN SAID INDICATED POINTS.
 ELEVATIONS ARE IN FEET ABOVE U.S.C. & G.S. MEAN SEA LEVEL UNLESS OTHERWISE SPECIFIED.
 BEFORE WORK CAN BE STARTED, THE CONTRACTOR MUST OBTAIN A PERMIT TO EXCAVATE IN COUNTY STREETS FROM THE L. A. COUNTY ROAD DEPT., 180 W. 5TH ST. AND MAKE A REPORT WITH THE COUNTY ENGINEER, ROOM 254 PAN AMERICAN BUILDING, 126 SO. HOUSTON ST. TO COVER THE COST OF CONSTRUCTION INSPECTION AND RECORD PLANS.
 APPROVAL OF THIS PLAN BY THE COUNTY OF LOS ANGELES DOES NOT CONSTITUTE A REPRESENTATION AS TO THE ACCURACY OF THE LOCATION OR THE EXISTENCE OR NON-EXISTENCE OF ANY UNDERGROUND UTILITY PIPE, OR STRUCTURE WITHIN THE LIMITS OF THIS PROJECT. THIS NOTE APPLIES TO ALL PAGES.
 IF WORK IS TO BE DONE IN A STATE HIGHWAY, A PERMIT MUST BE OBTAINED FROM THE STATE OF CALIFORNIA, DIVISION OF HIGHWAYS, 120 SOUTH SPRING STREET.

COUNTY OF LOS ANGELES, CALIFORNIA

APPROVED, JOHN A. LAMME, COUNTY ENGINEER
 APPROVED, A. M. BAWN, CHIEF ENGINEER
 BY A. P. Collins BY A. P. Collins
 SANITARIAN ENGINEER OFFICE ENGINEER
 CHECKED BY P. K. Kishner 6-27-56
 OFFICE OF COUNTY ENGINEER, REG. C. E. NO. 7860

checked 10-9-56 McLaren



BC 4067

BC 4067