

LENNOX BLDG. DIST. NO. 7

PROFILE ALIGNMENT AND GRADE OF P.C. 4063  
 SANITARY SEWERS PAGE 1  
 TO BE CONSTRUCTED IN  
 R/W WEST OF SAN PEDRO ST.

PRIVATE CONTRACT NO. 4068  
 W.S. 26  
 2 SHEETS, 3 PAGES  
 SCALE: 1" = 40' JUNE 1956  
 PREPARED IN THE OFFICES OF  
 SOUTH BAY ENGINEERING CO.  
 BY Raymond L. Douglas  
 REG. C. E. NO. 7171

23636  
 (3)

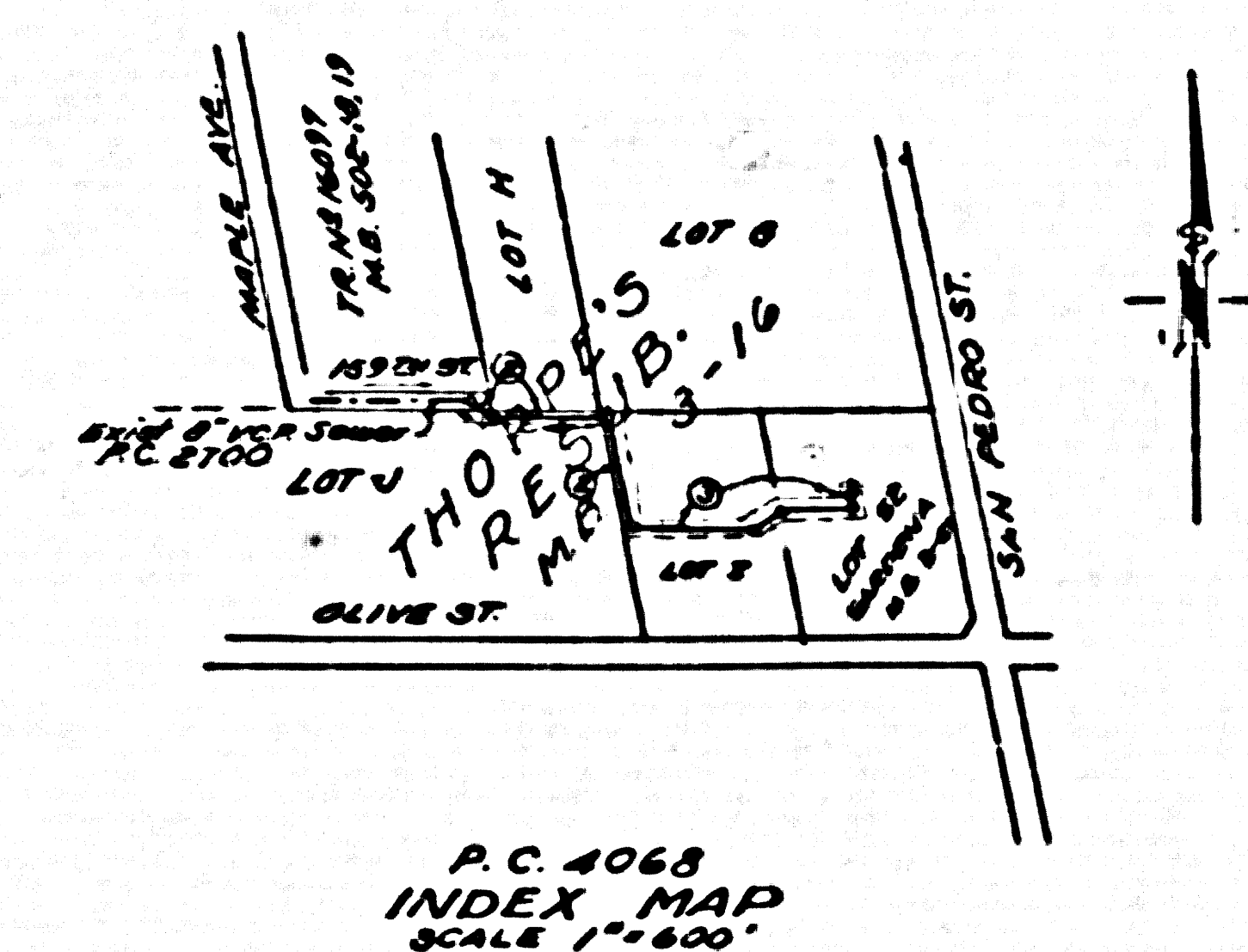
BENCH MARK  
 573133 - 61.5283, 4 FT  
 IN E.D. SIDE OF COND. PIPING  
 TO TOWER SIGNAL, 35' 50"  
 E. 1/4 WEST OF 1/4 INT.  
 OLIVE ST & AVALON BLVD.

CONNECTION CHARGES  
 AS INDICATED  
 L. Curtis 10-2-56

INDEX TABLE

SHEETS	PAGES
2	3

- NOTES:
- PROVIDE STAKES ON THE PROPERTY LINE OR R/W LINES PRODUCED AT RIGHT ANGLES TO THE SEWER LINE AT THE CENTER LINE OF EACH MANHOLE.
  - NO REPRESENTATIVE OF THE COUNTY ENGINEER WILL SURVEY OR LAYOUT ANY PORTION OF THE WORK.
  - THE OWNER OF THE AUTHORIZED REPRESENTATIVE SHALL FURNISH THE COUNTY ENGINEER WITH GRADE SHEETS AND STATION FOR ALL HOUSE LATERALS AND T-BRANCHES AND SHALL PROVIDE STAKES FOR THESE AT THEIR PROPER LOCATIONS WITH STATION AND PLUMBER MARKS. ANY CHANGE IN LOCATION SHALL BE REQUESTED IN WRITING BY THE OWNER OR HIS REPRESENTATIVE.
  - NO REVISIONS SHALL BE MADE IN THESE PLANS WITHOUT THE APPROVAL OF THE COUNTY ENGINEER.
  - USE STANDARD MANHOLE FRAMES AND COVERS, S.A. 117, EXCEPT AS NOTED.
  - USE STANDARD STRENGTH PIPE EXCEPT AS NOTED.
  - USE CEMENT MORTAR FOR ALL VITRIFIED CLAY PIPE JOINTS.
  - RESURFACE ALL TRENCH WITHIN PAVED AREA TO MEET L.A. COUNTY ROAD DEPT. OR CALIF. STATE HIGHWAY DEPT. REQUIREMENTS IN ACCORDANCE WITH PERMITS.
  - INDICATE FOUR FEET OF SEWER AT POINTS OF INTERFERENCE WITH POLES, S.A. 119.
  - ALL STRUCTURES SHALL BE BRICK SEWER STRUCTURES, S.A. 104, EXCEPT AS NOTED.
  - FOR ALLOWABLE LEAKAGE TEST USE FORMULA NO. 1 SPEC. L, SEC. 26.
  - MANHOLE POPE IN IMPROVED RIGHTS-OF-WAY TO BE 6" ABOVE FINISHED GRADE.



NOTES:

GRADES TO WHICH THIS IMPROVEMENT IS TO BE CONSTRUCTED ARE SHOWN ON PLANS AND PROFILE. GRADE POINTS FOR TOP OF CURB, CENTER LINE OF STREET, OR CENTER LINE OF ALLEYS ARE SHOWN BY CIRCLES ON PROFILES. AT ALL POINTS BETWEEN DESIGNATED POINTS THE GRADE SHALL BE ESTABLISHED SO AS TO CONFORM TO A STRAIGHT LINE DRAWN BETWEEN SAID DESIGNATED POINTS.

ELEVATIONS ARE IN FEET ABOVE MEAN SEA LEVEL, EXCEPT AS NOTED.

THIS DRAWING AND THE DATA HEREON ARE HEREBY MADE A PART OF THE SPECIFICATIONS.

WORK SHALL BE CONSTRUCTED ACCORDING TO SPECIFICATIONS ON FILE IN THE OFFICE OF THE COUNTY ENGINEER AND SHALL BE PROSECUTED ONLY IN THE PRESENCE OF THE COUNTY ENGINEER.

BEFORE WORK CAN BE STARTED, THE CONTRACTOR MUST OBTAIN A PERMIT TO EXCAVATE IN COUNTY STREETS FROM THE L.A. COUNTY ROAD DEPT., 188 W. 1<sup>ST</sup> ST. AND MAKE A DEPOSIT WITH THE COUNTY ENGINEER, ROOM 324 FARM AMERICAN BLDG., 324 5<sup>TH</sup> ST. SUFFICIENT TO COVER THE COST OF CONSTRUCTION INSPECTION AND RECORD PLANS.

APPROVAL OF THIS PLAN BY THE COUNTY OF LOS ANGELES DOES NOT CONSTITUTE A REPRESENTATION AS TO THE ACCURACY OF THE LOCATION OF OR THE EXISTENCE OR NON-EXISTENCE OF ANY UNDERGROUND UTILITY PIPE, OR STRUCTURE WITHIN THE LIMITS OF THIS PROJECT. THIS NOTE APPLIES TO ALL PAGES.

IF WORK IS TO BE DONE IN A STATE HIGHWAY, A PERMIT MUST BE OBTAINED FROM THE STATE OF CALIFORNIA, DIVISION OF HIGHWAYS, 120 SOUTH BRIDGE STREET.

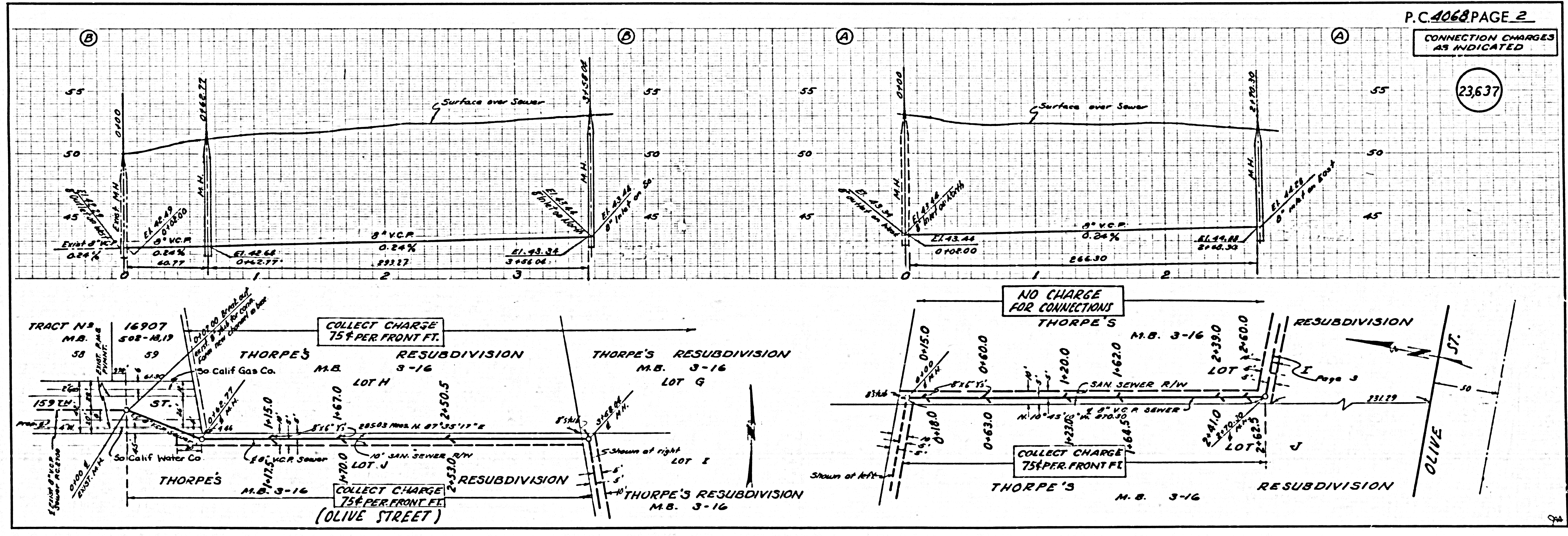
COUNTY OF LOS ANGELES, CALIFORNIA

APPROVED, JOHN A. LAMBE, COUNTY ENGINEER  
 APPROVED, A. M. BAWN, CHIEF ENGINEER

BY A.P. Collins SANITATION ENGINEER  
 BY J. H. ... CHIEF ENGINEER

CHECKED BY R. ... 10-15-56  
 OFFICE OF COUNTY ENGINEER, REG. C. E. NO. 7860

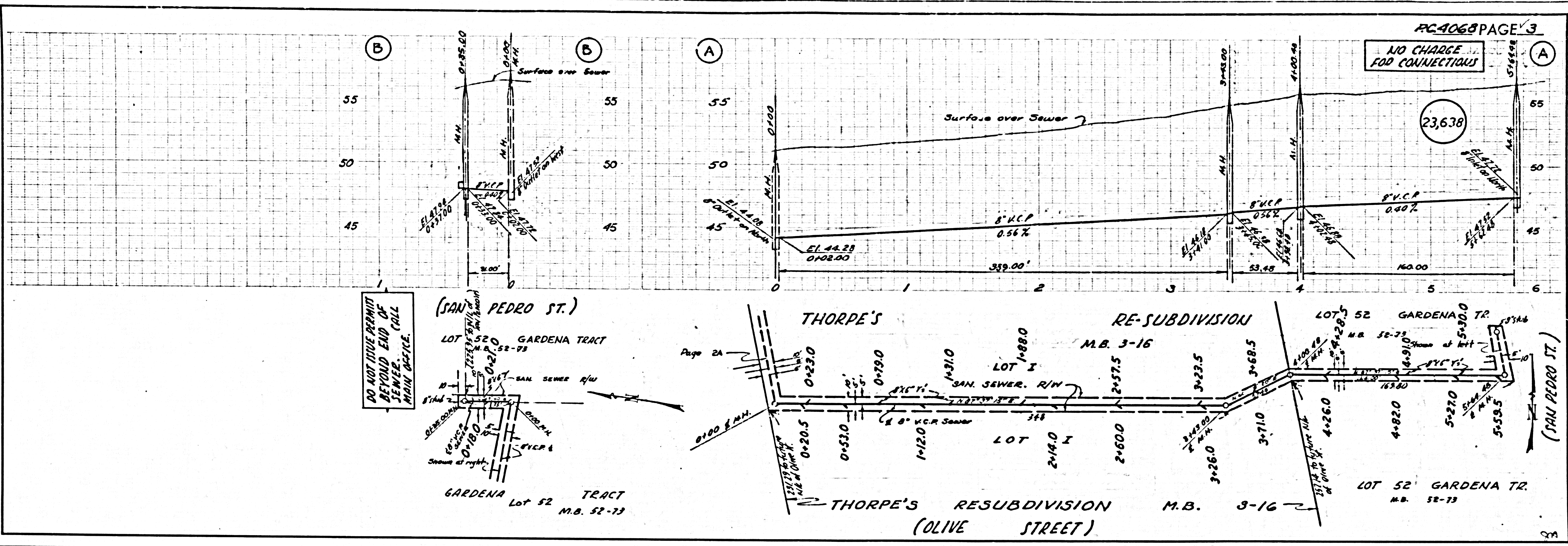
checked 11-15-56 *McLaren*



P.C. 4068

NO CHARGE FOR CONNECTIONS

23,638



DO NOT ISSUE PERMIT BEYOND END OF SEWER. CALL MAIN OFFICE.

