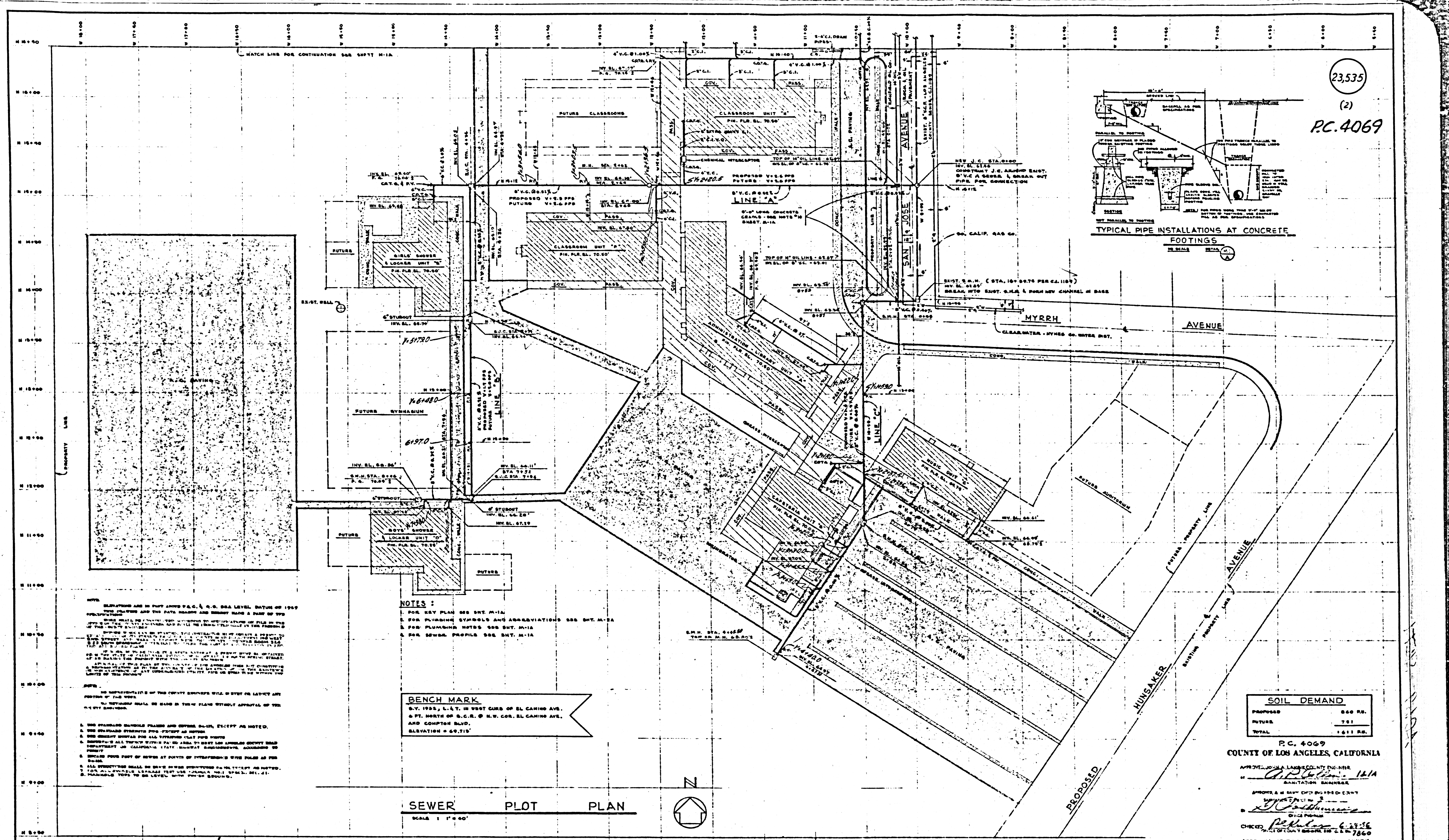
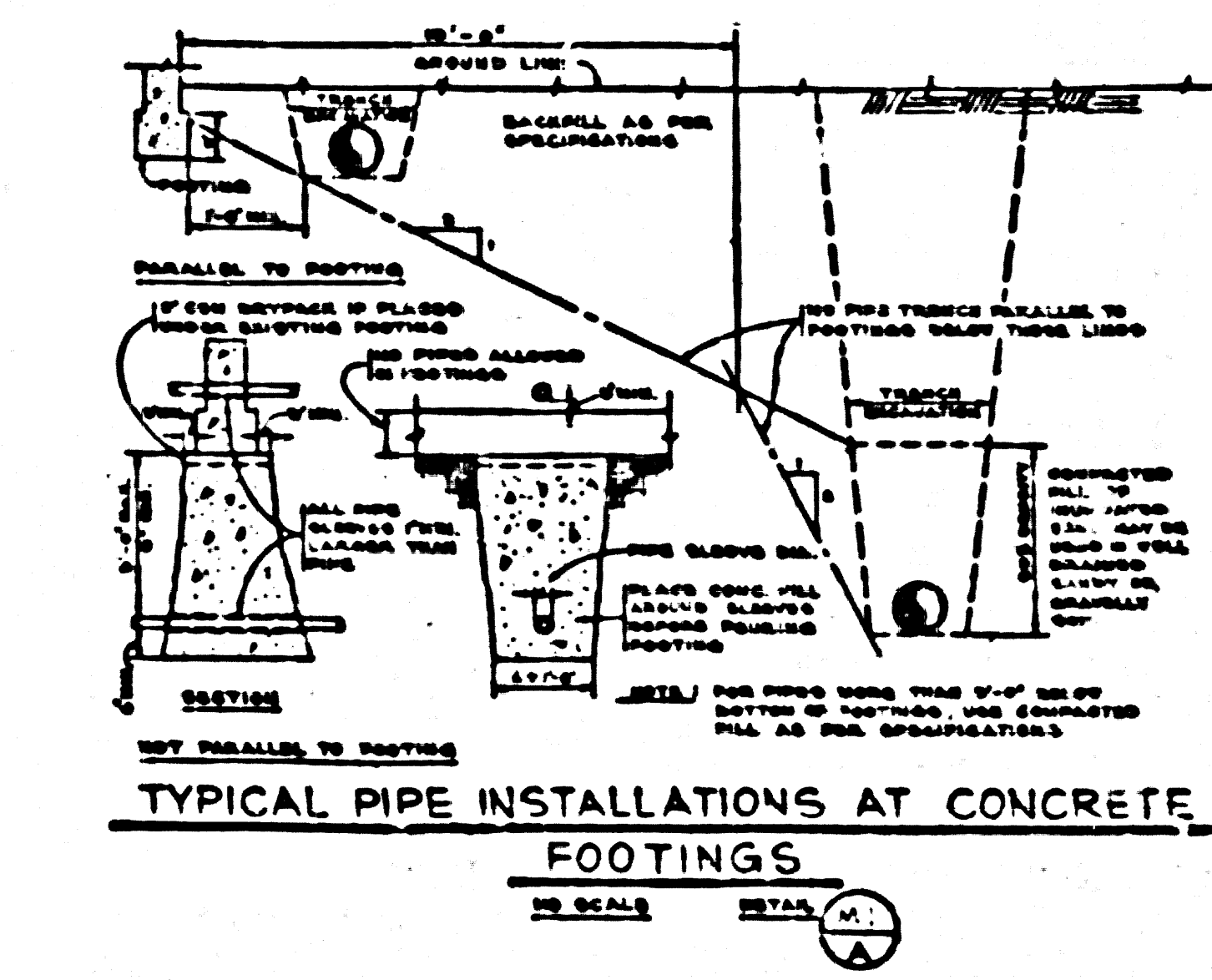


23,535

(2)  
P.C. 4069



**NOTES:**

1. ELEVATIONS ARE IN FEET ABOVE P.C. & G.C. SEA LEVEL, DATUM OF 1929.

2. THE CONTRACTOR SHALL BE RESPONSIBLE FOR OBTAINING ALL NECESSARY PERMITS FROM THE CITY ENGINEER AND THE STATE ENGINEER.

3. THE CONTRACTOR SHALL BE RESPONSIBLE FOR OBTAINING ALL NECESSARY PERMITS FROM THE CITY ENGINEER AND THE STATE ENGINEER.

4. THE CONTRACTOR SHALL BE RESPONSIBLE FOR OBTAINING ALL NECESSARY PERMITS FROM THE CITY ENGINEER AND THE STATE ENGINEER.

5. THE CONTRACTOR SHALL BE RESPONSIBLE FOR OBTAINING ALL NECESSARY PERMITS FROM THE CITY ENGINEER AND THE STATE ENGINEER.

**NOTES:**

1. FOR KEY PLAN SEE SHEET M-1A.

2. FOR PLUMBING SYMBOLS AND ABBREVIATIONS SEE SHEET M-2A.

3. FOR PLUMBING NOTES SEE SHEET M-1A.

4. FOR SEWER PROFILES SEE SHEET M-1A.

**BENCH MARK**  
 S.T. 1922, L.A.T. IN WEST CURB OF EL CAMINO AVE.  
 6 FT. NORTH OF S.C.R. @ N.W. COR. EL CAMINO AVE.  
 AND COMPTON BLVD.  
 ELEVATION = 69.71'

**SEWER PLOT PLAN**  
 SCALE 1" = 40'

SOIL DEMAND	
PROPOSED	860 RB.
FUTURE	701
<b>TOTAL</b>	<b>1561 RB.</b>

P.C. 4069  
 COUNTY OF LOS ANGELES, CALIFORNIA

APPROVED AND AUTHORIZED FOR THE ENGINEER  
*Charles D. Wright*  
 SANITATION ENGINEER

APPROVED AS SANITATION ENGINEER  
*Manuel Dominguez*  
 CIVIL ENGINEER

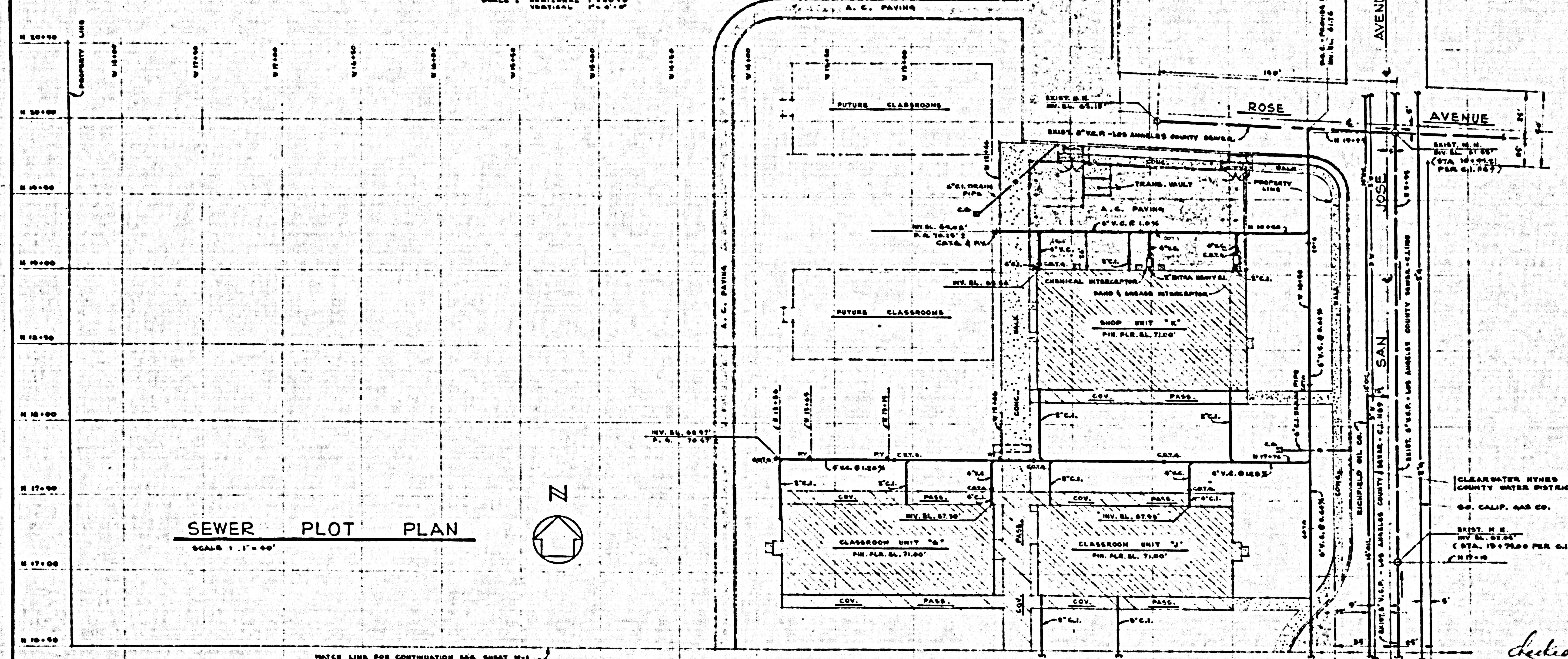
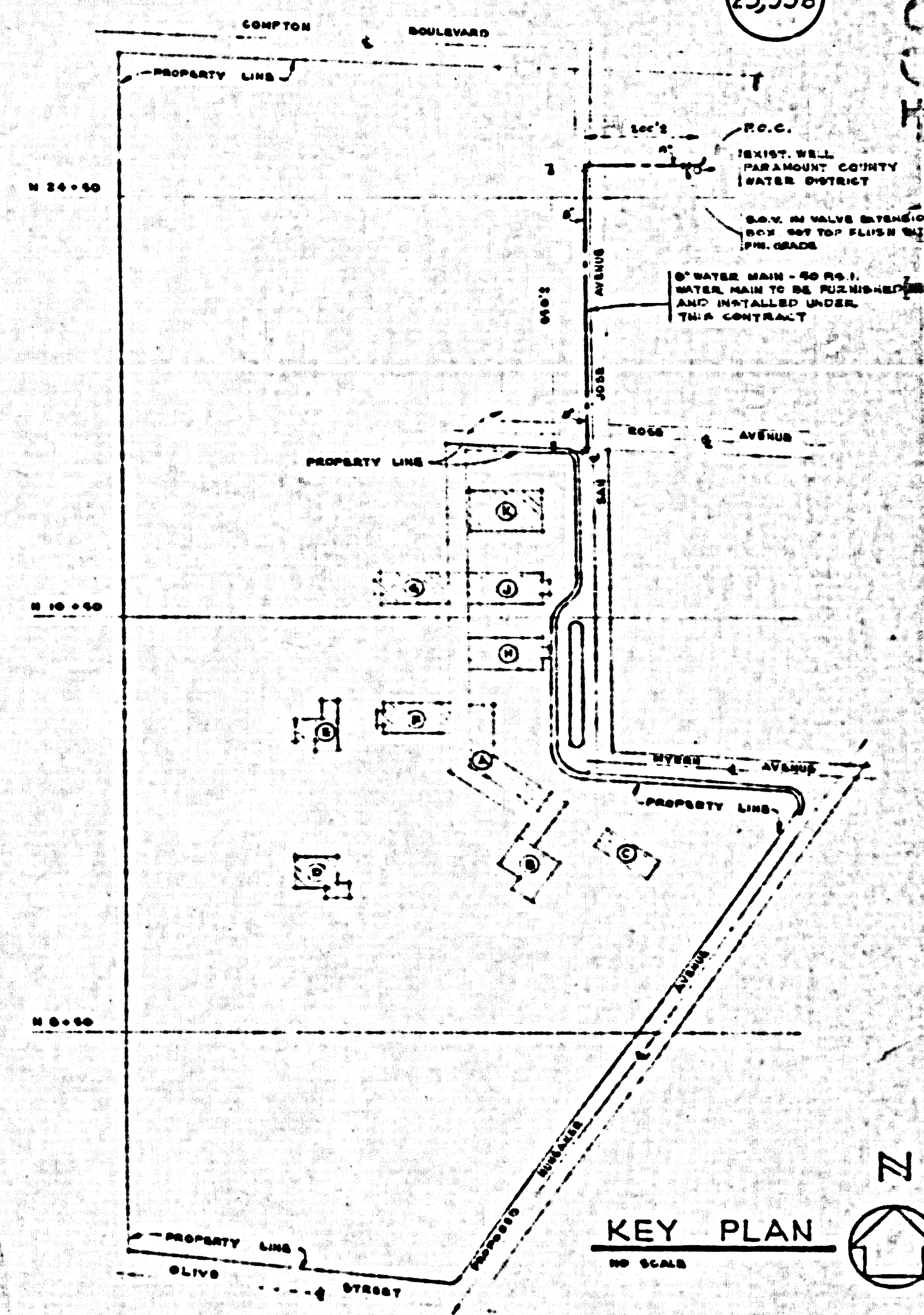
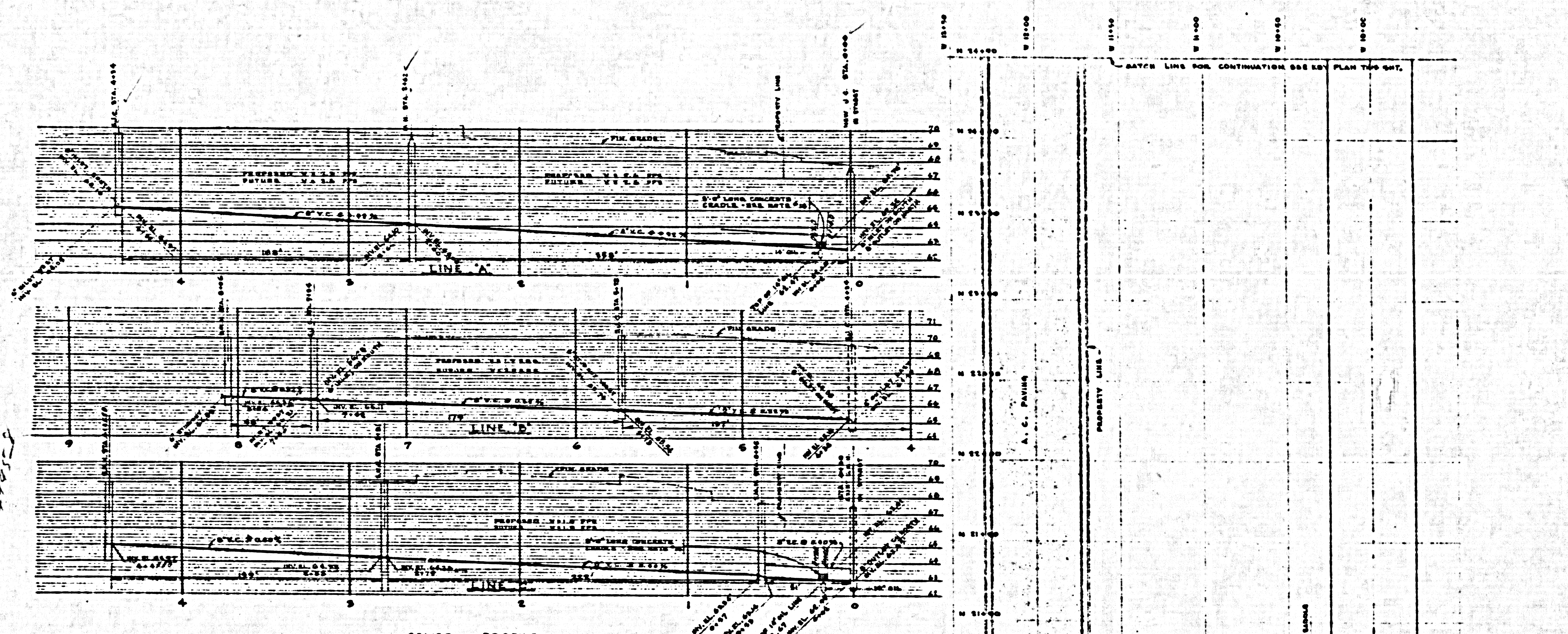
CHECKED: *Robert L. ...*  
 COUNTY ENGINEER, DISTRICT NO. 4

APPROVAL OF THIS PLAN BY THE COUNTY ENGINEER APPLIES TO 6" MAIN SEWER AND MANHOLES ONLY.

DATE	REVISIONS	ARCHITECT	MECHANICAL ENGINEER	KISTNER, WRIGHT & WRIGHT ARCHITECTS & ENGINEERS LOS ANGELES CALIFORNIA	CONTRACTOR TO VERIFY ALL DIMENSIONS AT THE JOB	SEWER PLOT PLAN	DATE: JUNE '66	SHEET NO.
	CONCRETE CRAPLES IN LIEU OF CAST IRON PIPE IN SEWER LINES "A" & "C" ABOVE GIL LINE IN SAN JOSE AVE.					MANUEL DOMINGUEZ HIGH SCHOOL	BY: R.M.A.P.C.	CHANGE SHEET
		STRUCTURAL ENGINEER	CIVIL ENGINEER			COMPTON UNION HIGH SCHOOL DISTRICT	CHECKED BY: <i>R.M.A.P.C.</i>	OF SHEETS
						COMPTON CALIFORNIA	DATE: 6-27-66	



P.C. 4069  
23,536



- PLUMBING NOTES:**
1. ALL 6" & SMALLER SEWER SHALL BE INSTALLED UNDER DIRECT SUPERVISION OF AN INSPECTOR WHO SHALL REPRESENT AND BE PAID BY THE OWNER, AND SHALL BE APPROVED BY THE L.A. COUNTY ENGINEER'S OFFICE, DIVISION OF BUILDING AND SAFETY.
  2. STANDARD MANHOLES AND COVERS SHALL BE CONSTRUCTED IN ACCORDANCE WITH L.A. COUNTY ORDINANCE NO. 6180, STANDARD NOS. SA-106 & SA-117.
  3. SHALLOW MANHOLES AND COVERS SHALL BE CONSTRUCTED IN ACCORDANCE WITH L.A. COUNTY ORDINANCE NO. 6180, STANDARD NOS. SA-106 & SA-101.
  4. BUILDING AND SAFETY DIVISION OF THE L.A. COUNTY ENGINEER'S OFFICE SHALL BE NOTIFIED 48 HOURS PRIOR TO START OF SEWER CONSTRUCTION.
  5. ALL PLUMBING SHALL COMPLY WITH THE L.A. COUNTY PLUMBING ORDINANCE NO. 6449.
  6. ALL SEWER LINES RUN AT A GRADIENT LESS THAN 1% SHALL BE STAKED AND GRADED.
  7. ALL SHUT-OFF VALVES OUTSIDE OF THE BUILDING SHALL BE 18" LONG, BORE WITH THE HANS OF SERVICE APPROPRIATELY CAPT & COVER.
  8. HOSE RIDGE SHALL BE INSTALLED 18" AWAY, FINISHED GRADE OR FINISHED FLOOR.
  9. FOR EXACT LOCATION OF OTHER BRASS PIPING AND CATCH BASINS SEE SHEETS C-2 & C-3.
  10. CATCH BASINS WILL BE FURNISHED AND INSTALLED UNDER OTHER SECTIONS OR SPECIFICATIONS.
  11. ALL SEWER AND GAS LINE DIMENSIONS SHOWN ARE APPROXIMATE LOCATIONS AND LENGTHS.
  12. ALL PLUNGED TUBS SHALL BE LINE SIZES UNLESS SPECIALLY SHOWN OTHERWISE.
  13. ALL WATER MOTORS TO BE ANCHORED TO FLOOR.
  14. 5' LONG CONCRETE CRADLES SHALL BE CONSTRUCTED IN ACCORDANCE WITH LOS ANGELES COUNTY ORDINANCE SA-110.

DATE	REVISIONS
	1. SEWER PROFILE REVISED AS PER REVISION INDICATED ON SHEET M-1.
	2. 6" VITRIFIED CLAY SEWER ROUTED INTO STREET SEWER IN ROSE AVE. IN LIEU OF STREET SEWER IN SAN JOSE.

**KISTNER, WRIGHT & WRIGHT**  
ARCHITECTS & ENGINEERS  
LOS ANGELES CALIFORNIA

MECHANICAL ENGINEER: *W. S. Wright*  
CIVIL ENGINEER: *William S. Wright*

ARCHITECT: *W. S. Wright*  
STRUCTURAL ENGINEER: *William S. Wright*

SEWER PLOT PLAN  
MANUEL DOMINGUEZ HIGH SCHOOL  
COMPTON UNION HIGH SCHOOL DISTRICT  
COMPTON CALIFORNIA

DATE: JUNE '66  
BY: R.M.A.C.  
CHECKED BY: *[Signature]*  
JOB NO. 08-150

P.C. 4069  
PAGE 2 OF 2

CONTRACTOR TO VERIFY ALL DIMENSIONS AT THE JOB

Checked 10-15-66 *[Signature]*

P.C. 4069  
CHANGE SHEET 2