

PUENTE BLDG. DIST. NO. 2

TRACT N° 20342 (26439)

PRIVATE CONTRACT NO. 4070

W.S. 38  
2 SHEETS, 3 PAGES

SCALE: HORIZ. 1" = 40' VERT. 1" = 4'

PREPARED IN THE OFFICES OF  
RICHARD G. WITT

By Richard G. Witt  
REG. C. E. NO. 10458

FOR LEGEND SEE PLAN NO. S-A-64

NOTE: GRADES TO WHICH THIS IMPROVEMENT IS TO BE CONSTRUCTED ARE SHOWN ON PLANS AND PROFILE GRADE POINTS FOR TOP OF CURB, CENTER LINE OF STREETS OR CENTER OF ALLEYS ARE SHOWN BY CIRCLES OR SQUARES AT ALL POINTS BETWEEN DESIGNATED POINTS THE GRADE SHALL BE ESTABLISHED SO AS TO CONFORM TO A STRAIGHT LINE DRAWN BETWEEN SAID DESIGNATED POINTS.  
ELEVATIONS ARE IN FEET ABOVE U.S.C. & G.S. MEAN SEA LEVEL.  
THIS DRAWING AND THE DATA HEREON ARE HEREBY MADE A PART OF THE SPECIFICATIONS.  
WORK SHALL BE CONSTRUCTED ACCORDING TO SPECIFICATIONS ON FILE IN THE OFFICE OF THE CITY ENGINEER AND SHALL BE PROSECUTED ONLY IN THE PRESENCE OF THE CITY ENGINEER.  
BEFORE WORK CAN BE STARTED, THE CONTRACTOR MUST OBTAIN A PERMIT TO EXCAVATE IN CITY STREETS FROM THE E. A. COUNTY ROAD DEPT. FOR W. 3RD ST. AND MAKE A REPORT WITH THE CITY ENGINEER, ROOM 324 FARM AMERICAN BUILDING, 222 GO BROADWAY SUFFICIENT TO COVER THE COST OF CONSTRUCTION INSPECTION AND RECORD PLANS.  
APPROVAL OF THIS PLAN BY THE CITY OF LA PUENTE DOES NOT CONSTITUTE A REPRESENTATION AS TO THE ACCURACY OF THE LOCATION OF OR THE EXISTENCE OF ANY UNDERGROUND UTILITY PIPE, OR STRUCTURE WITHIN THE LIMITS OF THE PROJECT THIS NOTE APPLIES TO ALL PAGES.  
IF WORK IS TO BE DONE ON A STATE HIGHWAY, A PERMIT MUST BE OBTAINED FROM THE STATE OF CALIFORNIA, DIVISION OF HIGHWAYS, 128 SOUTH SPRING STREET.

CITY OF LA PUENTE, CALIFORNIA

APPROVED, JOHN A. LAMME, CITY ENGINEER APPROVED, A. M. RAWLIN, CHIEF ENGINEER  
CO. SAN. DIST. NO. 21

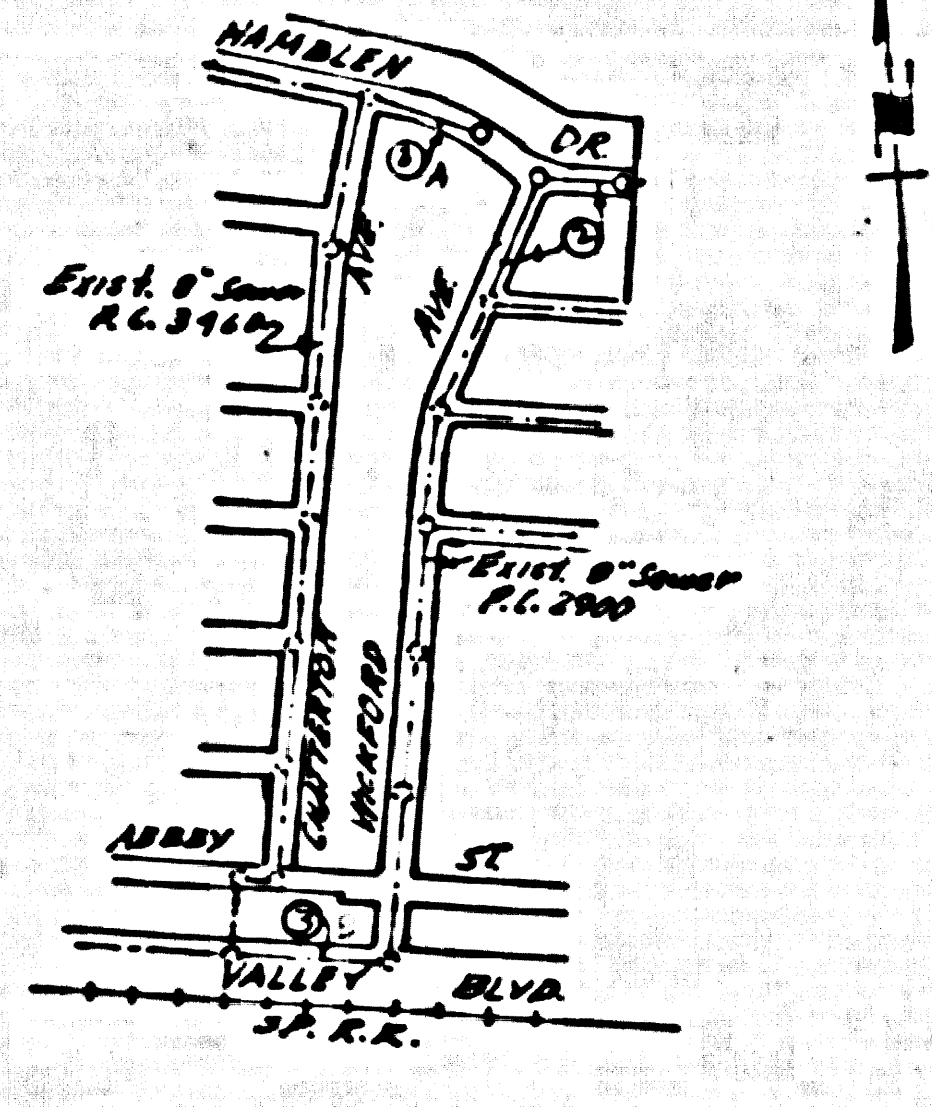
BY R. F. Brannan, CITY SANITATION ENGINEER BY H. J. Brannan, CITY ENGINEER

CHECKED BY R. G. Witt, 4-6-56  
OFFICE OF CITY ENGINEER, REG. C. E. NO. 1046

APPROVED, GORDON L. ORSEL, CITY MANAGER  
BY Gordon L. Orsel, CITY MANAGER

BM L.Q. 859-11 BM 15 E1378665  
C.S. 18 W and com. N.W. X side S.P.R.R.  
N side Anaheim Puente Rd.

- NOTES:  
1. PROVIDE STAKES ON THE PROPERTY LINE OR PROPERTY LINES PRODUCED AT RIGHT ANGLES TO THE SEWER LINE AT THE CENTER LINE OF EACH MANHOLE.  
2. NO REPRESENTATIVE OF THE CITY ENGINEER WILL SURVEY OR LAYOUT ANY PORTION OF THE WORK.  
3. THE OWNER OR HIS AUTHORIZED REPRESENTATIVE SHALL FURNISH THE CITY ENGINEER WITH GRADE SHEETS AND STATION FOR ALL HOUSE LATERALS AND Y BRANCHES AND SHALL PROVIDE STAKES FOR THEM AT THEIR PROPER LOCATIONS WITH STATIONING PLANT MARKS. ANY CHANGE IN LOCATION SHALL BE REQUESTED IN WRITING BY THE OWNER OR HIS REPRESENTATIVE.  
4. NO REVISIONS SHALL BE MADE IN THESE PLANS WITHOUT THE APPROVAL OF THE CITY ENGINEER.  
5. USE STANDARD MANHOLE FRAMES AND COVERS, S.A.-117, EXCEPT AS NOTED.  
6. USE STANDARD STRENGTH PIPE EXCEPT AS NOTED.  
7. USE CEMENT MORTAR FOR ALL VITRIFIED CLAY PIPE JOINTS, at "wedge-lock" or "s-paced seal" per spec. See 36, 18.  
8. RESURFACE ALL TRUCKS WITHIN PAVED AREA TO MEET CITY ROAD DEPT. OR CALIF. STATE HIGHWAY DEPT. REQUIREMENTS IN ACCORDANCE WITH PERMITS.  
9. INCASE FOUR FEET OF LOWER AS POINTS OF INTERFERENCE WITH ADJ. S.A.-119.  
10. HOUSE LATERALS TO BE CONSTRUCTED WITH INVERTS AT PROPERTIES 1" TO 6" BELOW CURB GRADE EXCEPT AS NOTED.  
11. ALL STRUCTURES SHALL BE BRICK SEWER STRUCTURES, S.A.-194, EXCEPT AS NOTED.  
12. FOR ALLOWABLE SEWAGE TEST USE FORMULA NO. 1, SPEC. SEC. 11.  
13. MANHOLE TOPS IN UNIMPROVED RIGHTS-OF-WAY TO BE 4" ABOVE FINISHED GRADE.  
14. The private engineer is to furnish the base lateral depth of the property line below the top of curb elevation for each house lateral on the grade sheet.

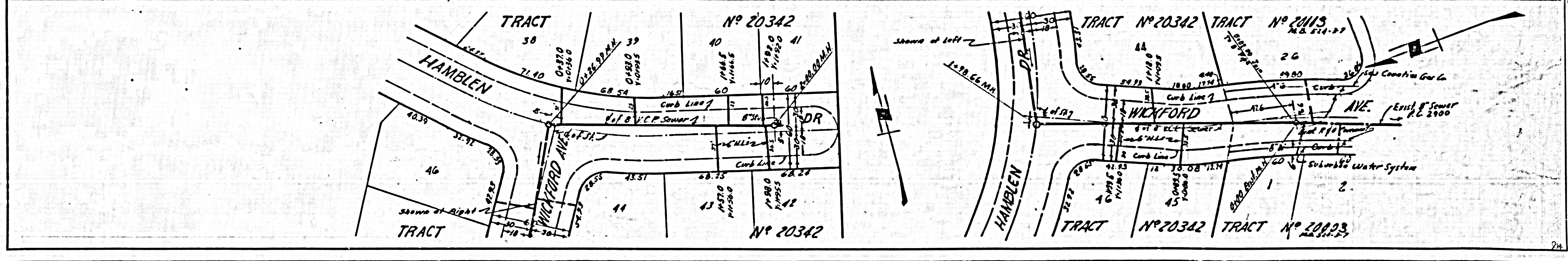
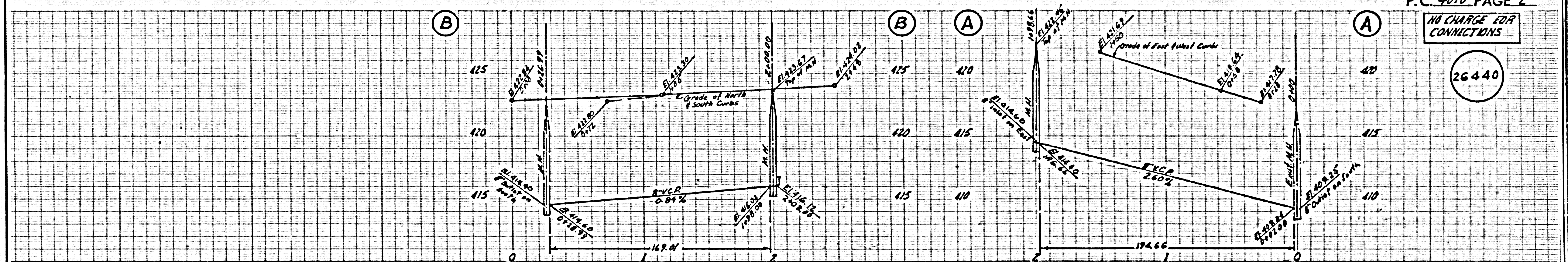


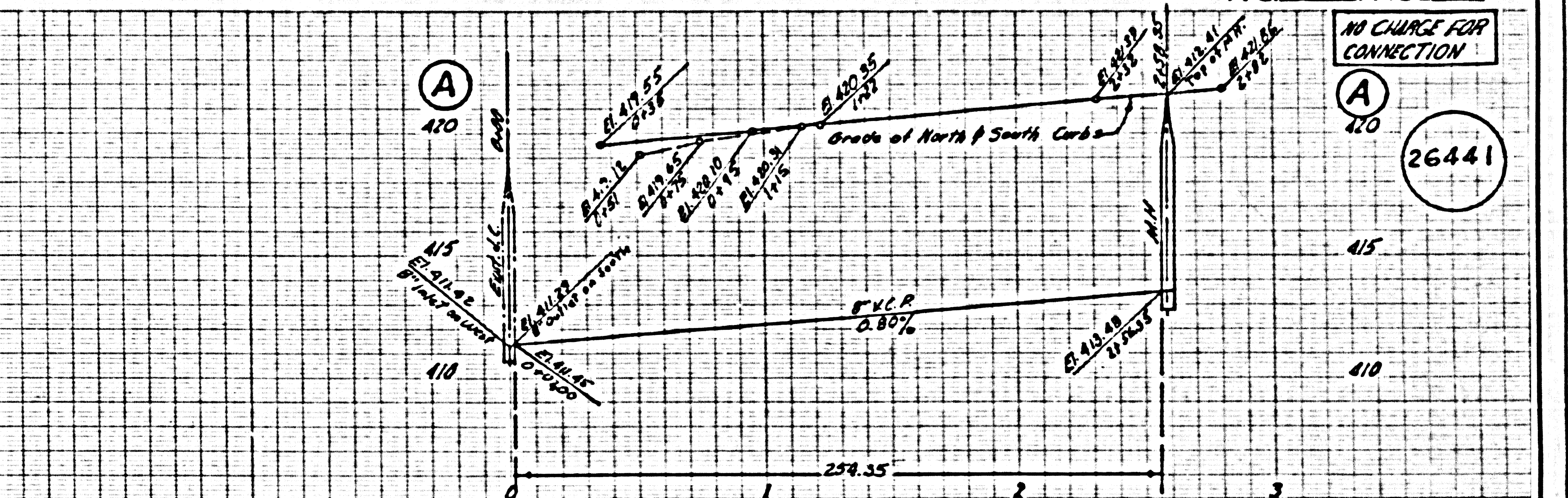
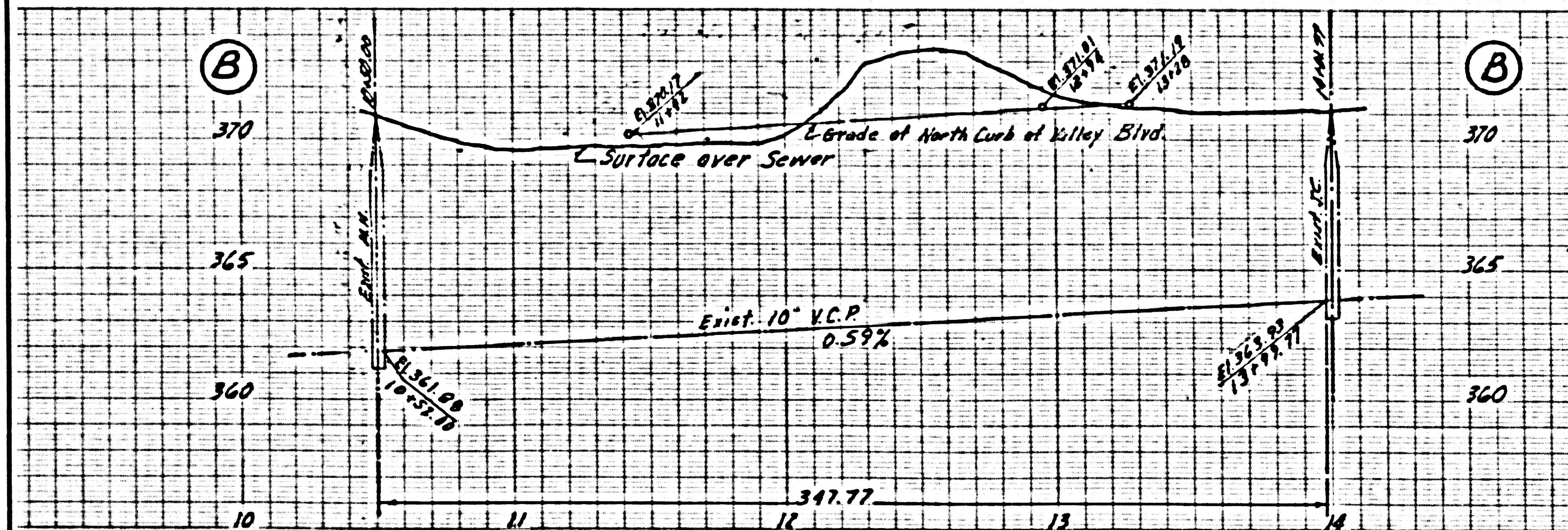
Note: Lots 3 thru 32 inclusive Served by sewers constructed Under P.C. 3460

NO CHARGE FOR CONNECTIONS

NO CHARGE FOR CONNECTIONS

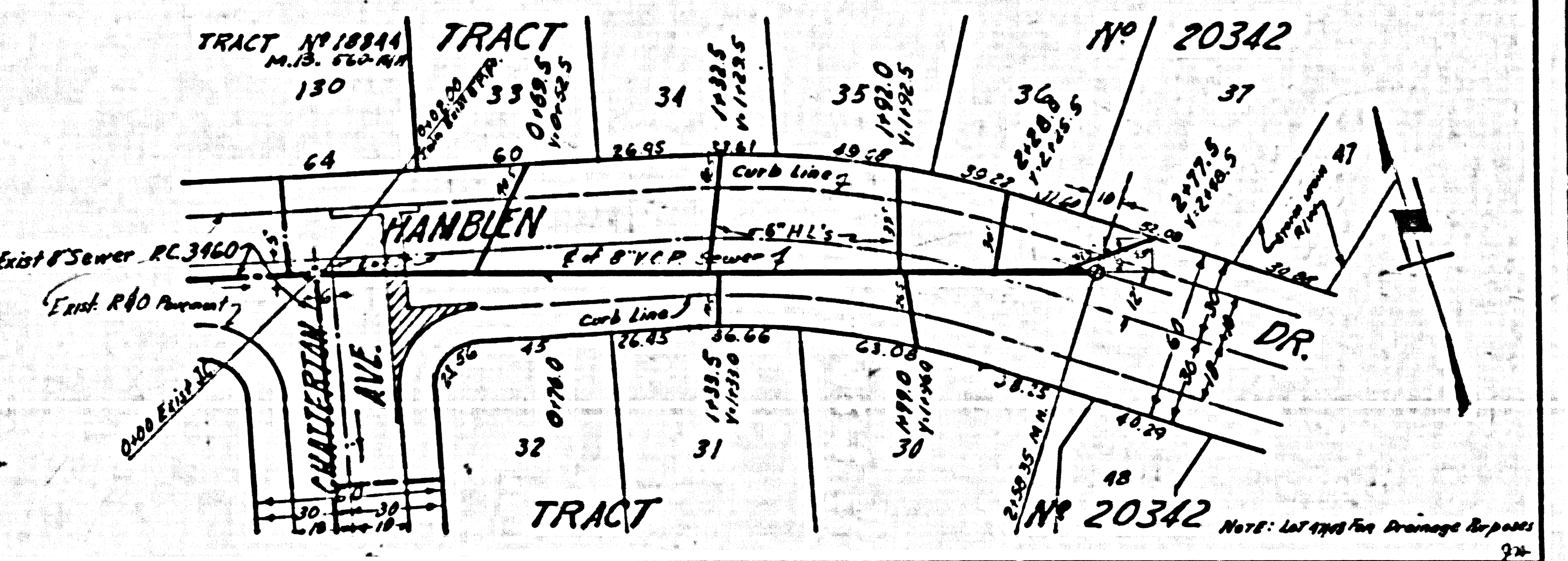
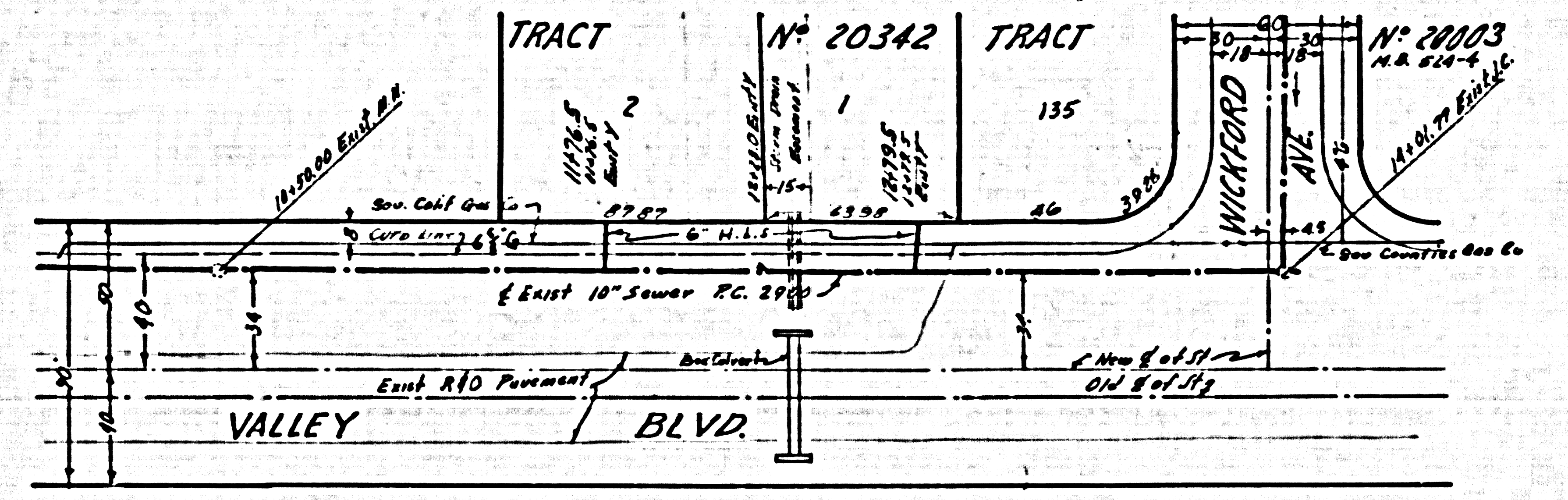
(26440)





NO CHARGE FOR CONNECTION

26441



NOTE: See Station Drainage Report