

B.M. M-58 FB-1258-7 Elev. 83790  
 Maplewood Ave. & Bellflower Blvd. S.E.  
 Cor. Block Sp. in Case you intend, 45' S.E.  
 S. E. Maplewood Ave. 145' E. & Bellflower Blvd.

### BELFLOWER BLDG. DIST. NO. 4

**NOTES**

- PROVIDE STAKES ON THE PROPERTY LINE OR PROPERTY LINES PRODUCED AT RIGHT ANGLES TO THE SEWER LINE AT THE CENTER LINE OF EACH MANHOLE.
- NO REPRESENTATIVE OF THE COUNTY ENGINEER WILL SURVEY OR LAYOUT ANY PORTION OF THE WORK.
- THE OWNER OR HIS AUTHORIZED REPRESENTATIVE SHALL FURNISH THE COUNTY ENGINEER WITH GRAB SHEETS AND STATION FOR ALL HOUSE LATERALS AND Y BRANCHES AND SHALL PROVIDE STAKES FOR THEM AT THEIR PROPER LOCATIONS WITH STATIONING PLAINLY MARKED. ANY CHANGE IN LOCATION SHALL BE REQUESTED IN WRITING BY THE OWNER OR HIS REPRESENTATIVE.
- NO REVISIONS SHALL BE MADE IN THESE PLANS WITHOUT THE APPROVAL OF THE COUNTY ENGINEER.
- USE STANDARD MANHOLE FRAMES AND COVERS, S.A. 117, EXCEPT AS NOTED.
- USE STANDARD STRENGTH PIPE 400000-45-100000.
- USE CEMENT MORTAR FOR ALL VITRIFIED CLAY PIPE JOINTS.
- RESURFACE ALL YARDS WITHIN PAVED AREA TO MEET L. A. COUNTY ROAD DEPT. OR CALIF. STATE HIGHWAY DEPT. SPECIFICATIONS IN ACCORDANCE WITH REGS.
- SHOULDER FOUR FEET OF SEWER AT POINTS OF INTERFERENCE WITH HOUSE, S.A. 119.
- MANHOLE LATERALS TO BE 8" V.C.P. UNLESS OTHERWISE NOTED.
- ALL STRUCTURES SHALL BE BRICK SEWER STRUCTURES, S.A. 124, EXCEPT AS NOTED.
- FOR ALLOWABLE LEAKAGE TEST USE FORMULA NO. 1, S.P.C.L., SEC. II.
- MANHOLE TOPS IN UNIMPROVED RIGHTS-OF-WAY TO BE 4" ABOVE FINISHED GRADE.

PROFILE ALIGNMENT AND GRADE OF **P.C. 4075**  
**SANITARY SEWERS** PAGE **1**  
 TO BE CONSTRUCTED IN **(23,295)**  
**MAPLEWOOD AVENUE**  
 (2)

**PRIVATE CONTRACT NO. 4075**

W.S. 33

1 SHEET, 2 PAGES

SCALE: HORIZ. 1" = 40' VERT. 1" = 4'

JUNE, 1956

PREPARED IN THE OFFICES OF

**MANNING & DETILLA**

By J. L. Manning REG. C. E. NO. 7676

FOR LEGEND SEE PLAN NO. S-A-64

**NOTE**  
 GRADES TO WHICH THIS IMPROVEMENT IS TO BE CONSTRUCTED ARE SHOWN ON PLANS AND PROFILES. GRADE POINTS FOR TOP OF CURB, CENTER LINE OF STREETS, OR CENTER LINE OF ALLEYS ARE SHOWN BY CIRCLES OR PROFILES AT ALL POINTS BETWEEN DESIGNATED POINTS THE GRADE SHALL BE ESTABLISHED SO AS TO CONFORM TO A STRAIGHT LINE BETWEEN SAID DESIGNATED POINTS.  
 ELEVATIONS ARE IN FEET ABOVE U.S.C. & G.S. MEAN SEA LEVEL. DATUM OF 1929.  
 THE DRAWINGS AND THE DATA HEREON ARE HEREBY MADE A PART OF THE SPECIFICATIONS.  
 WORK SHALL BE CONSTRUCTED ACCORDING TO SPECIFICATIONS ON FILE IN THE OFFICE OF THE COUNTY ENGINEER AND SHALL BE PROSECUTED ONLY IN THE PRESENCE OF THE COUNTY ENGINEER.  
 BEFORE WORK CAN BE STARTED, THE CONTRACTOR MUST OBTAIN A PERMIT TO EXCAVATE IN COUNTY STREETS FROM THE L. A. COUNTY ROAD DEPT. 150' IN 2" AND MAKE A DEPOSIT WITH THE COUNTY ENGINEER, ROOM 224 MAIN AMERICAN BLDG., 525 SO. BROADWAY SUFFICIENT TO COVER THE COST OF CONSTRUCTION INSPECTION AND RECORD PLANS.  
 APPROVAL OF THIS PLAN BY THE COUNTY OF LOS ANGELES DOES NOT CONSTITUTE A REPRESENTATION AS TO THE ACCURACY OF THE LOCATION OR OF THE EXISTENCE OR NON-EXISTENCE OF ANY UNDERGROUND UTILITY PIPE, OR STRUCTURE WITHIN THE LIMITS OF THIS PROJECT. THIS NOTE APPLIES TO ALL PAGES.  
 IF WORK IS TO BE DONE IN A STATE HIGHWAY, A PERMIT MUST BE OBTAINED FROM THE STATE OF CALIFORNIA, DIVISION OF HIGHWAYS, 130 SOUTH SPRING STREET.

COUNTY OF LOS ANGELES, CALIFORNIA

APPROVED, JOHN A. LAMBE, COUNTY ENGINEER

APPROVED, A. M. RAWN, CHIEF ENGINEER

By A. P. Collins SANITATION ENGINEER

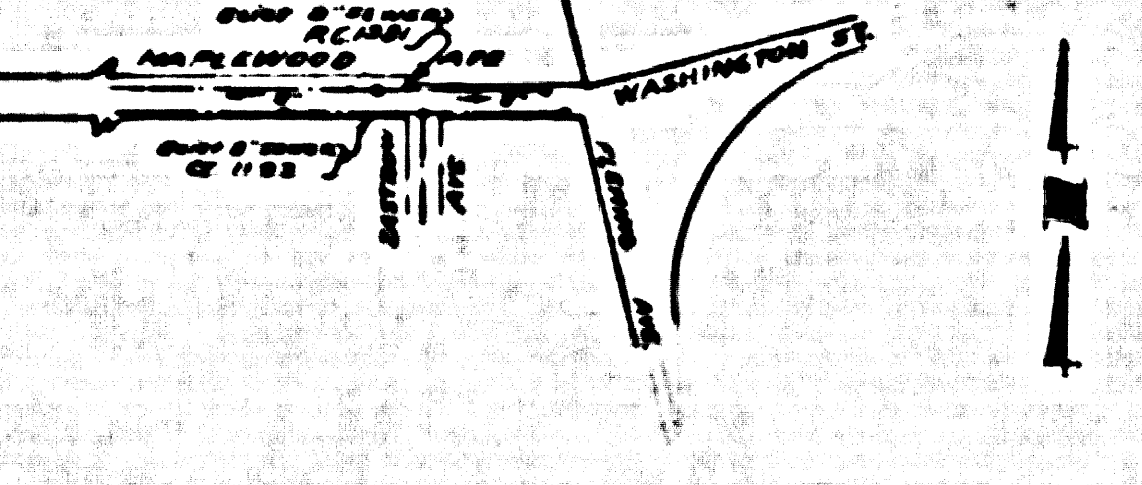
By J. L. Manning OFFICE ENGINEER

CHECKED BY W. K. Onda 7-23-56

OFFICE OF COUNTY ENGINEER, REG. C. E. NO. 7486

SHEET	PAGE
1	1-2

**NO CHARGE FOR CONNECTIONS**  
 W. K. Onda 7-23-56

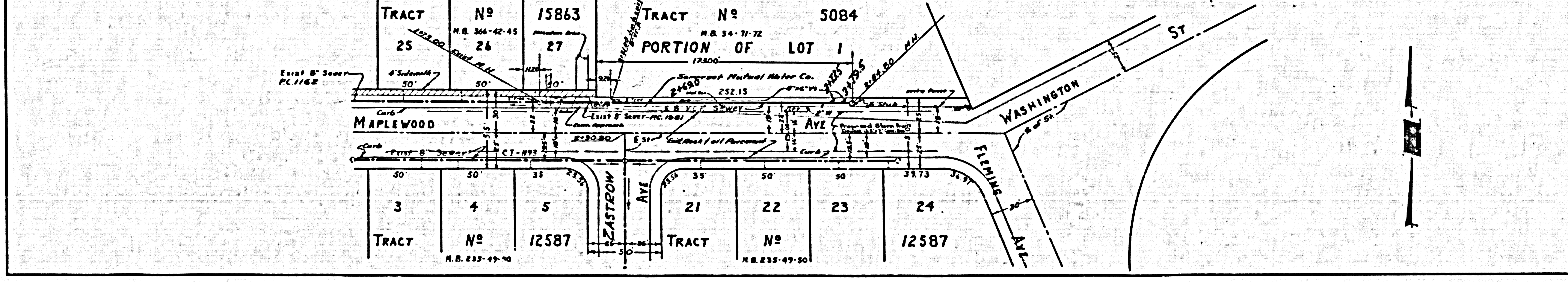
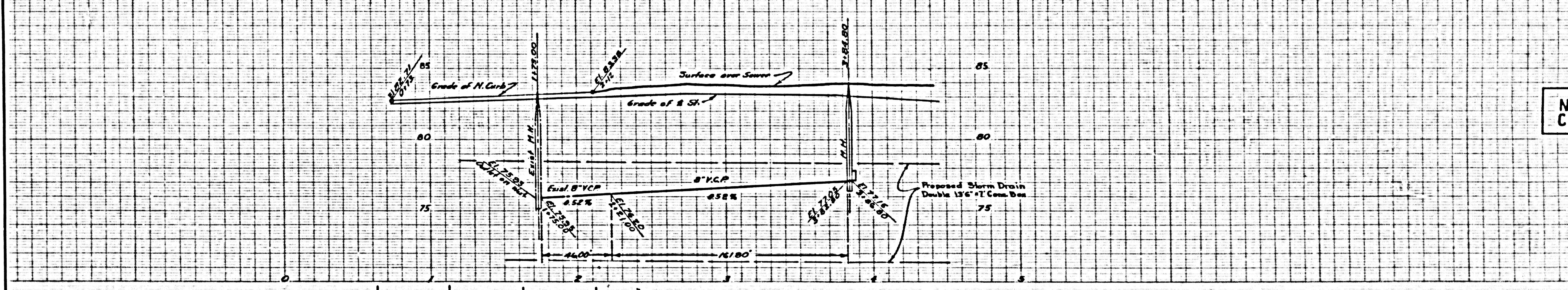


Index Map  
 PC 4075  
 Scale 1" = 400'

*Checked 8-24-56 W. K. Onda*

(23,296)

**NO CHARGE FOR CONNECTIONS**



P.C. 4075