

SAN DIMAS BLDG. DIST. NO. 10

PROFILE ALIGNMENT AND GRADE OF **P.C. 4079**
SANITARY SEWERS PAGE **1**
 TO BE CONSTRUCTED IN

TRACT No 20079

PRIVATE CONTRACT NO. 4079

W.S. 47

3 SHEETS; 6 PAGES
 SCALE: 1" = 40' JULY 1956

23,341

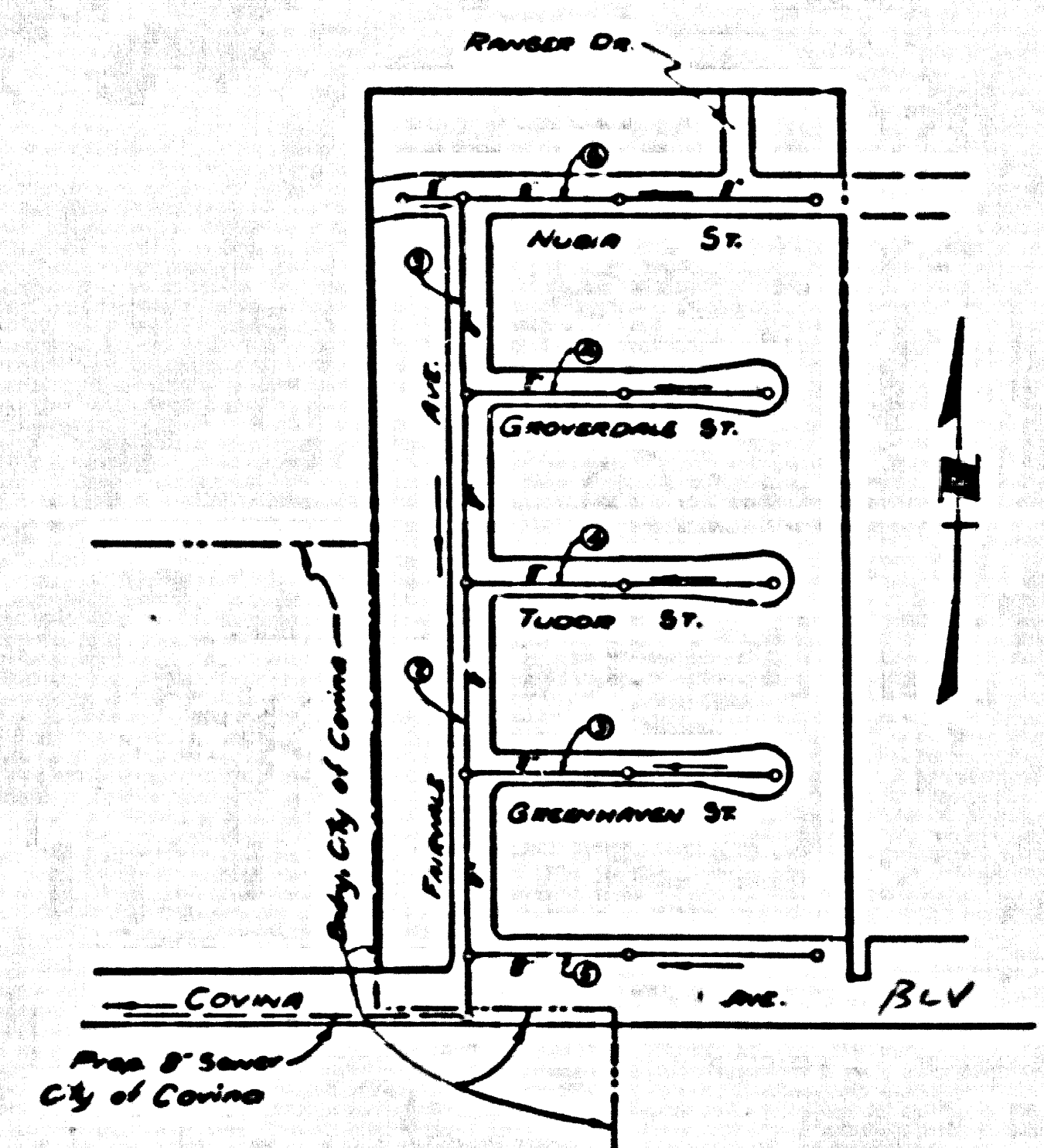
PREPARED IN THE OFFICES OF
TREADWELL ENGINEERING CORPORATION

(6)

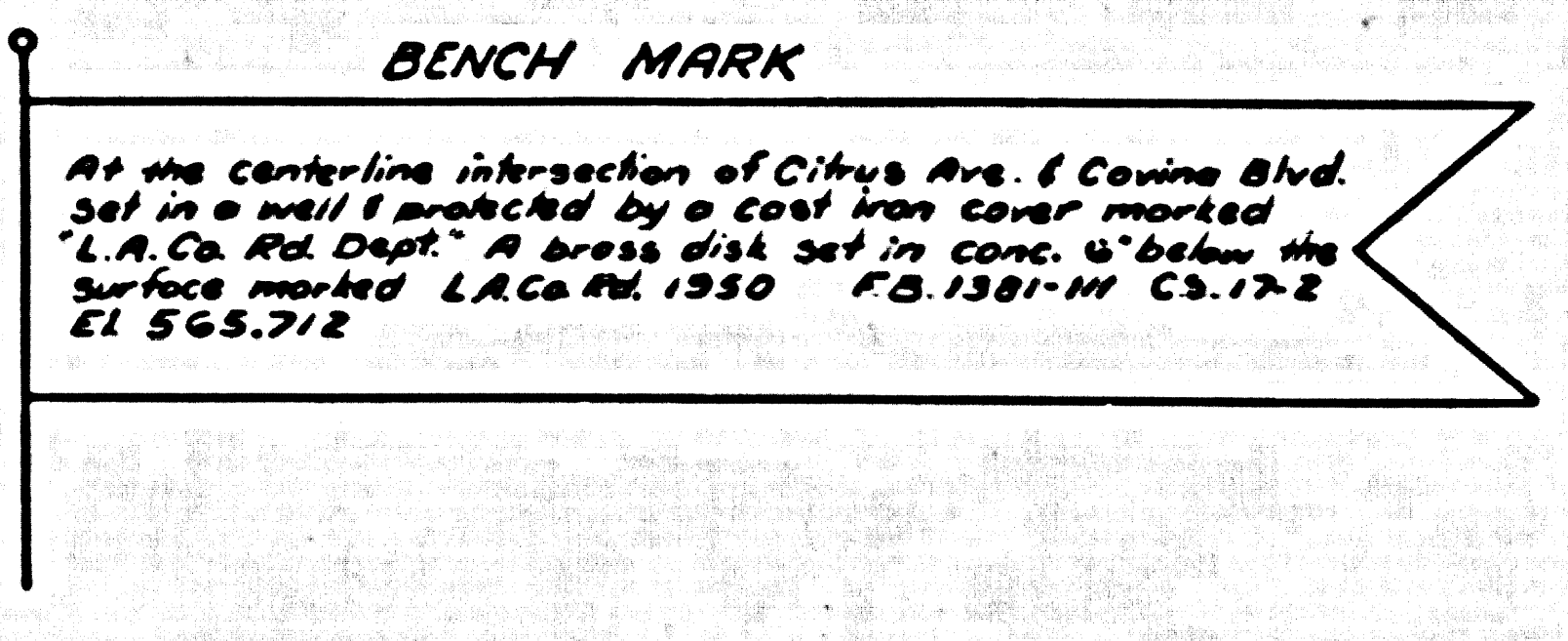
By *W.G. Treadwell* REG. C. E. NO. 410

FOR LEGEND SEE PLAN NO. S-A-64

- NOTES**
- PROVIDE STAKES ON THE PROPERTY LINE OR PROPERTY LINES PRODUCED AT RIGHT ANGLES TO THE SEWER LINE AT THE CENTER LINE OF EACH MANHOLE.
 - NO REPRESENTATIVE OF THE COUNTY ENGINEER WILL SURVEY OR LAYOUT ANY PORTION OF THE WORK.
 - THE OWNER OR HIS AUTHORIZED REPRESENTATIVE SHALL FURNISH THE COUNTY ENGINEER WITH GRADE SHEETS AND STATION FOR ALL HOUSE LATERALS AND V BRANCHES AND SHALL PROVIDE STAKES FOR THEM AT THEIR PROPER LOCATIONS WITH BRANCHING PLANNED. ANY CHANGE IN LOCATION SHALL BE REQUESTED BY THE OWNER OR HIS REPRESENTATIVE.
 - NO REVISIONS SHALL BE MADE IN THESE PLANS WITHOUT THE APPROVAL OF THE COUNTY ENGINEER.
 - USE STANDARD MANHOLE FRAMES AND COVERS, S-A-117, EXCEPT AS NOTED.
 - USE STANDARD SPRINGERS PIPE EXCEPT AS NOTED.
 - USE CEMENT MORTAR FOR ALL WITHIN CLAY PIPE JOINTS.
 - RESURFACE ALL TRENCH WITHIN PAVED AREA TO MEET L. A. COUNTY ROAD DEPT. OR CALIF. STATE HIGHWAY DEPT. SPECIFICATIONS IN ACCORDANCE WITH PERMITS.
 - DISCARD FOUR FEET OF SEWER AT POINTS OF INFLUENCE WITH POLES, S-A-118.
 - HOUSE LATERALS TO BE CONSTRUCTED WITH INVERTS AT PROPERTY LINE... FEET BELOW CURB GRADE EXCEPT AS NOTED.
 - ALL STRUCTURES SHALL BE BUILT BY STRUCTURAL S-A-104, EXCEPT AS NOTED.
 - FOR MECHANICAL SHALLOWS USE FORMULA NO. 10... SPEC. NO. 54.
 - MANHOLE TOPS IN UNIMPROVED RIGHTS-OF-WAY TO BE 8" ABOVE FINISHED GRADE.
 - THE PRIVATE ENGINEER IS TO FURNISH THE HOUSE LATERAL DEPTH AT THE PROPERTY LINE BELOW THE TOP OF CURB ELEVATION FOR EACH HOUSE LATERAL, ON THE GRADE SHEET.



INDEX MAP
TRACT No 20079
SCALE 1" = 300'
P.C. 4079



INDEX TABLE

SHEETS	PAGES
3	6

NO CHARGE FOR CONNECTIONS
P. K. Kahan

APPROVED:
 DATE: *7-11-56*
Paul Kahan
 CITY ENGINEER
 CITY OF COVINA

NOTES

GRADES TO WHICH THIS IMPROVEMENT IS TO BE CONSTRUCTED ARE SHOWN ON PLANS AND PROFILES. GRADE POINTS FOR TOP OF CURB, CENTER LINE OF STREET, OR CENTER LINE OF ALLEY ARE SHOWN BY CIRCLES ON PROFILES. AT ALL POINTS BETWEEN DESIGNATED POINTS THE GRADE SHALL BE ESTABLISHED SO AS TO CONFORM TO A STRAIGHT LINE DRAWN BETWEEN SAID DESIGNATED POINTS.

ELEVATIONS ARE IN FEET ABOVE U.S.C. & G.S. MEAN SEA LEVEL DATUM OF 1929.

THIS DRAWING AND THE DATA HEREON ARE HEREBY MADE A PART OF THE SPECIFICATIONS.

WORK SHALL BE CONSTRUCTED ACCORDING TO SPECIFICATIONS ON FILE IN THE OFFICE OF THE COUNTY ENGINEER AND SHALL BE PROSECUTED ONLY IN THE PRESENCE OF THE COUNTY ENGINEER.

BEFORE WORK CAN BE STARTED, THE CONTRACTOR MUST OBTAIN A PERMIT TO EXCAVATE IN COUNTY STREETS FROM THE L. A. COUNTY ROAD DEPT., 100 W. 3RD ST. AND MAKE A DEPOSIT WITH THE COUNTY ENGINEER, ROOM 224 PALM AVENUE BUILDING, 130 SO. HOPEWELL STREET TO COVER THE COST OF CONSTRUCTION INSPECTION AND RECORD PLANS.

APPROVAL OF THIS PLAN BY THE COUNTY OF LOS ANGELES DOES NOT CONSTITUTE A REPRESENTATION AS TO THE ACCURACY OF THE LOCATION OF OR THE EXISTENCE OR NON-EXISTENCE OF ANY UNDERGROUND UTILITY PIPE, OR STRUCTURE WITHIN THE LIMITS OF THIS PROJECT. THIS NOTE APPLIES TO ALL PAGES.

A PERMIT TO BE BORED IN A STATE HIGHWAY, A PERMIT MUST BE OBTAINED FROM THE STATE OF CALIFORNIA, DIVISION OF HIGHWAYS, 130 SOUTH SPRING STREET.

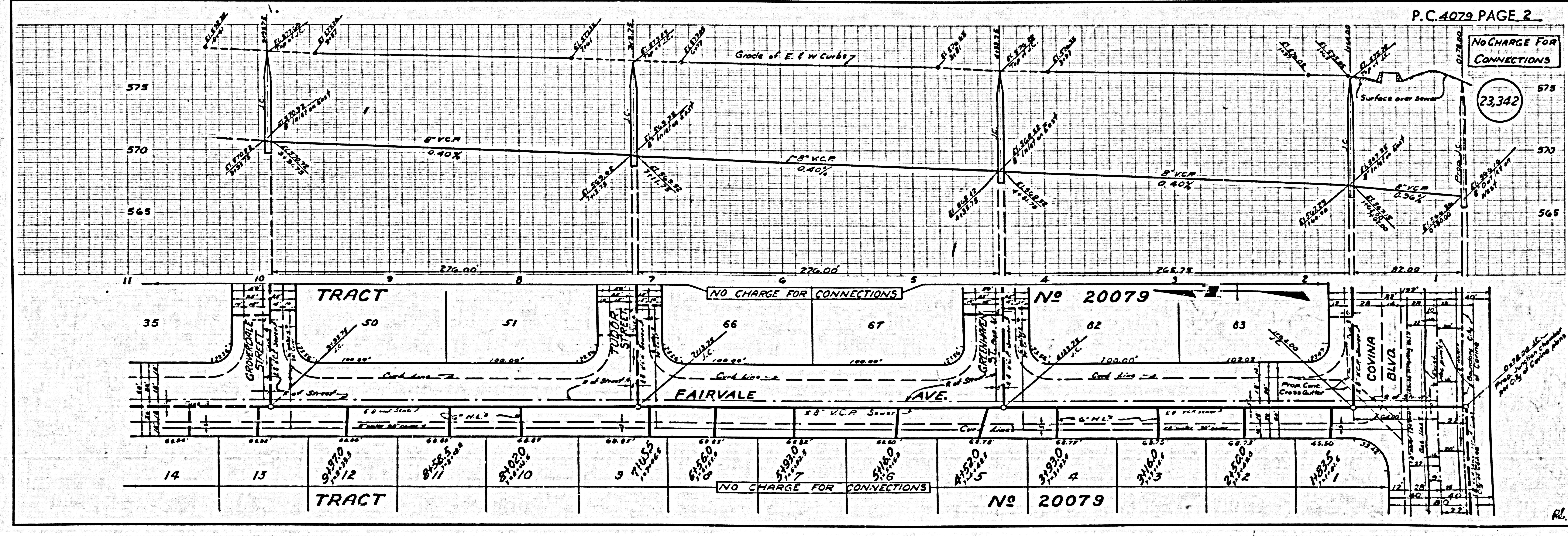
COUNTY OF LOS ANGELES, CALIFORNIA

APPROVED, JOHN A. LAMBE, COUNTY ENGINEER
 APPROVED, A. M. RAWIN, CHIEF ENGINEER
 CO. SAN. DIST. NO. 22

By *A. P. Collins* *J. Poston*
 SANITATION ENGINEER CIVIL ENGINEER

CHECKED BY *P. K. Kahan* 7-13-56
 OFFICE OF COUNTY ENGINEER, REG. C. E. NO. 7860

checked 8-28-56 W. Law

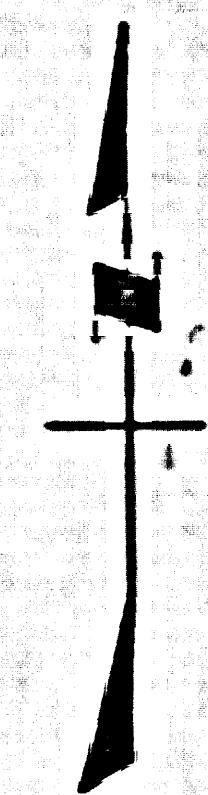
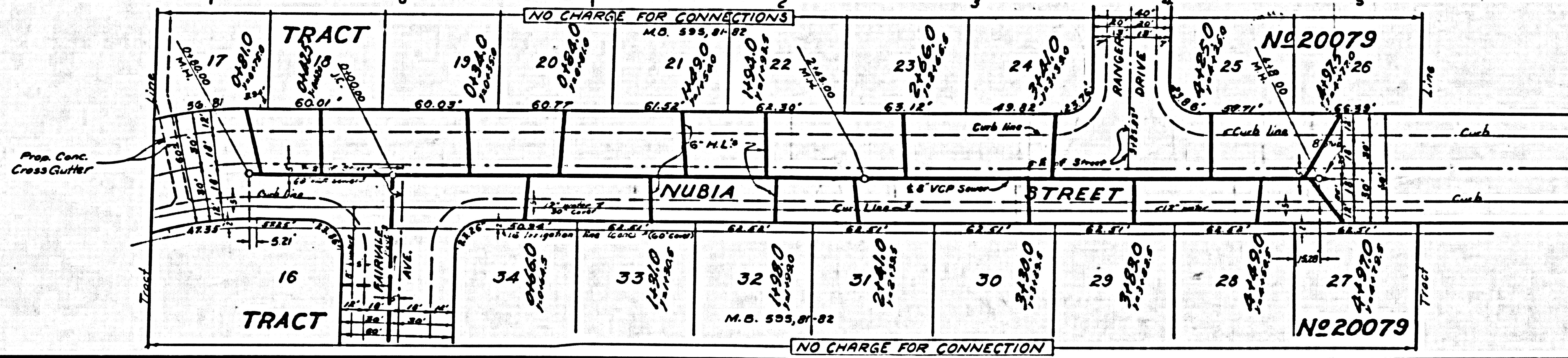
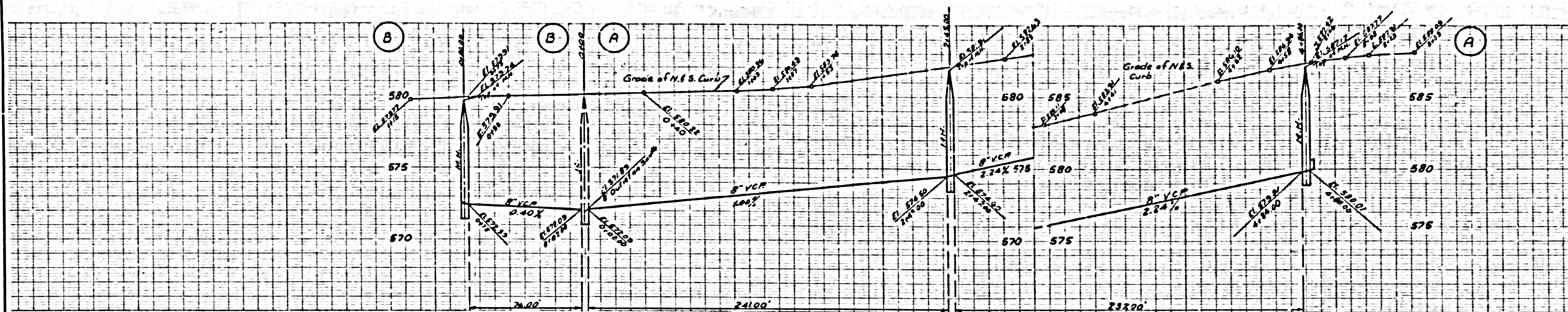


6506-21212

P.C. 4079

NO CHARGE FOR CONNECTIONS

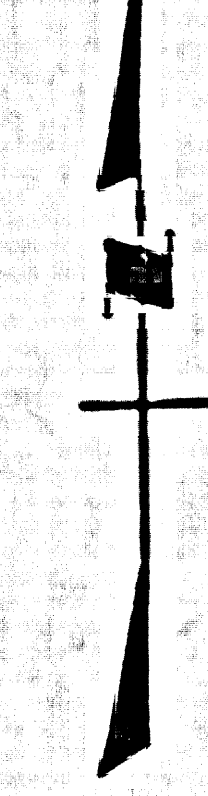
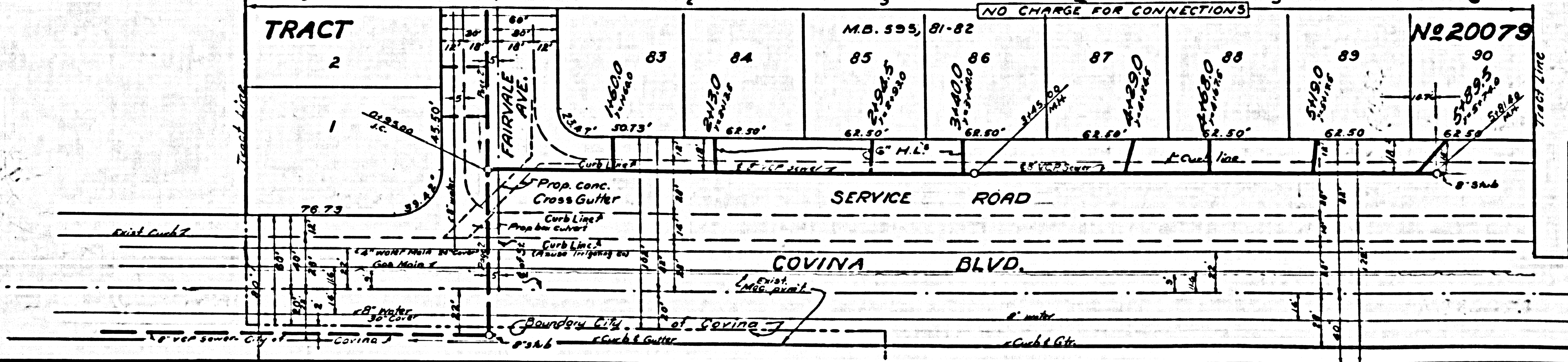
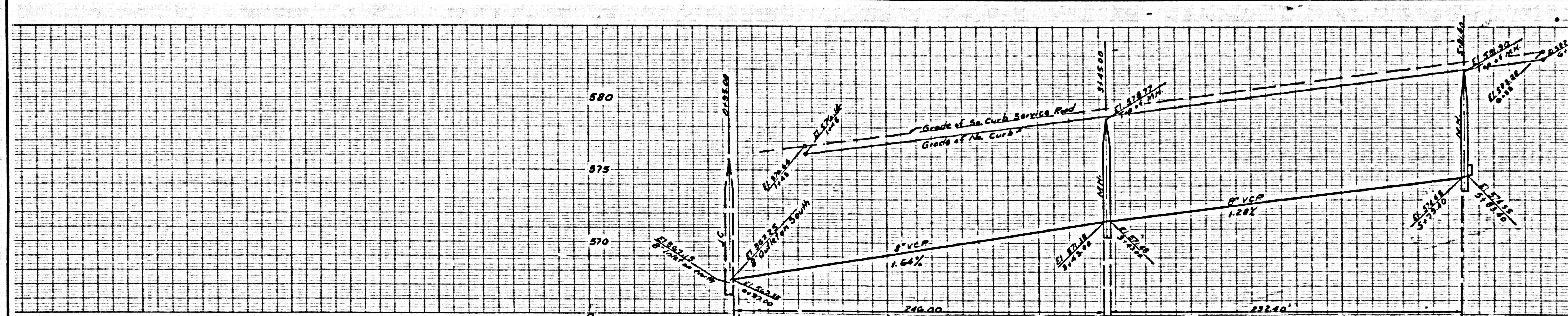
23,346



RL

NO CHARGE FOR CONNECTIONS

23,345



RL

PC 4079