

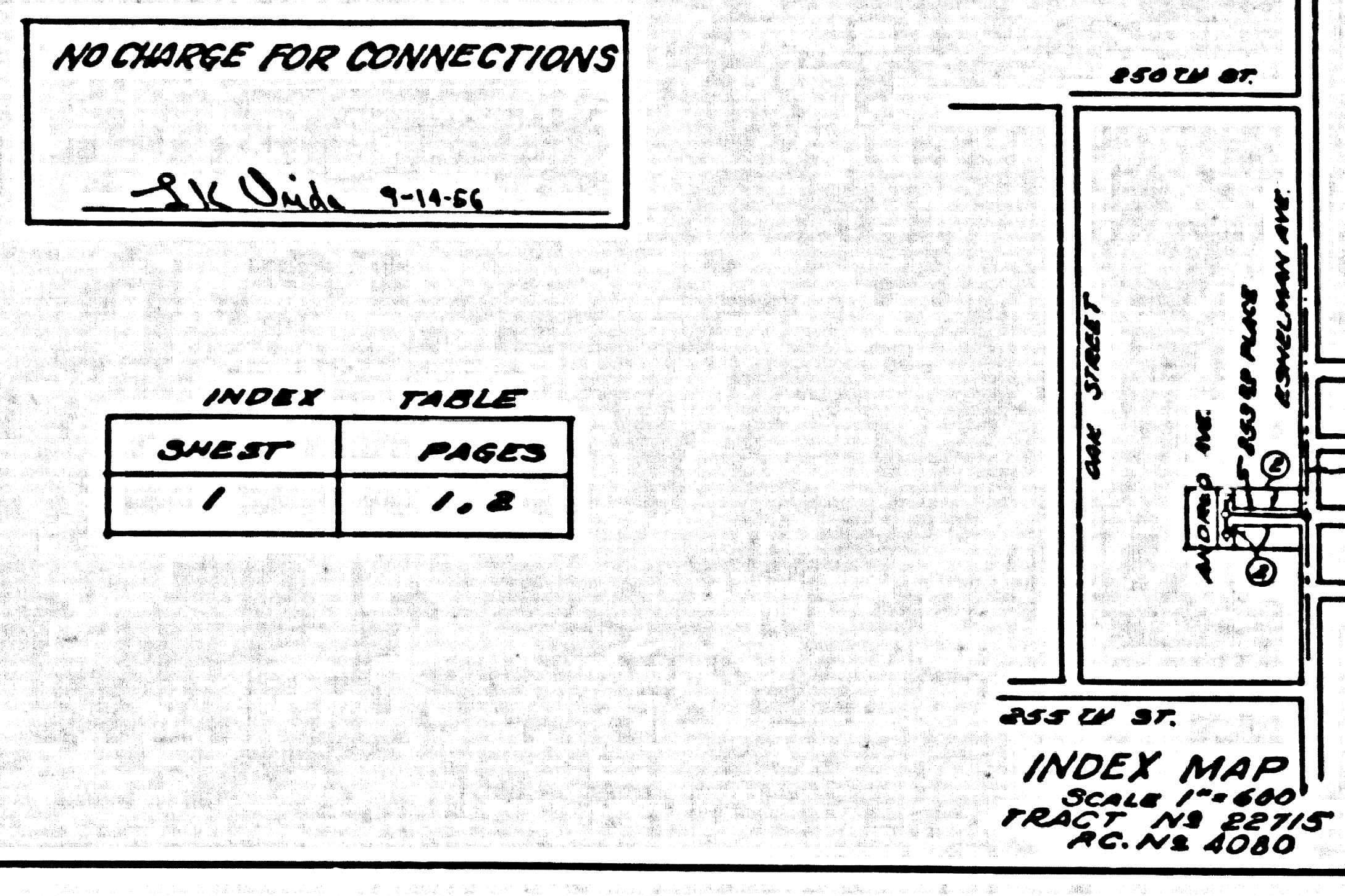
LOMITA BLDG. DIST. NO. 71

PROFILE ALIGNMENT AND GRADE OF P.C. 4080
 SANITARY SEWERS PAGE 1
 TO BE CONSTRUCTED IN
 TRACT NO 22715

PRIVATE CONTRACT NO. 4080
 W.S. 28
 1 SHEET 2 PAGES (24,723)
 SCALE: 1" = 4' MAY, 1956
 PREPARED BY THE OFFICES OF
 SOUTH BAY ENGINEERING COMPANY (2)
 By Raymond L. ...
 REG. C. E. NO. 7171
 FOR LEGEND SEE PLAN NO. S-A-64

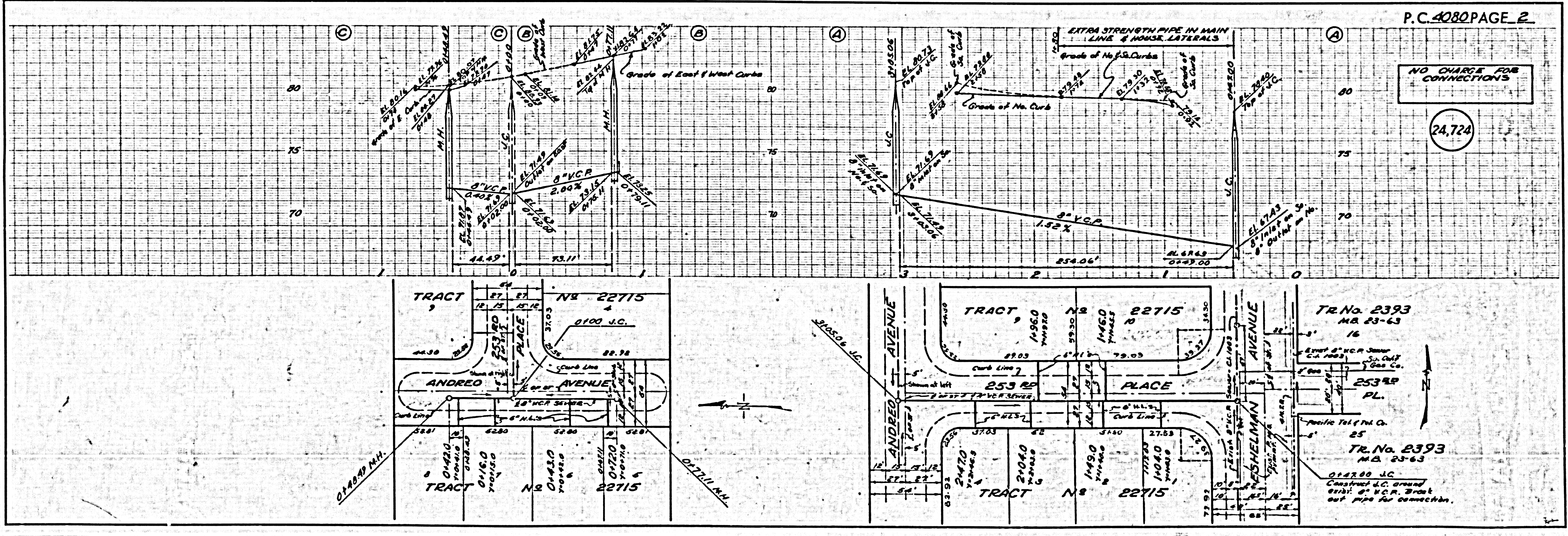
NOTE:
 PROVIDE STAKES ON THE PROPERTY LINE OR PROPERTY LINES PRODUCED AT RIGHT ANGLES TO THE SEWER LINE AT THE CENTER LINE OF EACH MANHOLE.
 NO REPRESENTATIVE OF THE COUNTY ENGINEER SHALL SURVEY OR LAYOUT ANY PORTION OF THE WORK.
 THE OWNER OR HIS AUTHORIZED REPRESENTATIVE SHALL FURNISH THE COUNTY ENGINEER WITH GRADE SHEETS AND STATION FOR ALL HOUSE LATERALS AND Y BRANCHES AND SHALL PROVIDE STAKES FOR THEM AT THEIR PROPER LOCATIONS WITH STATION AND PLAINLY MARKED. ANY CHANGE IN LOCATION SHALL BE INDICATED BY WRITING IN THE CHANGES TO HIS REPRESENTATIVE.
 NO REVISIONS SHALL BE MADE IN THESE PLANS WITHOUT THE APPROVAL OF THE COUNTY ENGINEER.

1. USE STANDARD MANHOLE FRAMES AND COVERS, S-A-117, EXCEPT AS NOTED.
2. USE STANDARD STRENGTH PIPE EXCEPT AS NOTED.
3. USE CEMENT MORTAR FOR ALL VITRIFIED CLAY PIPE JOINTS.
4. RESURFACE ALL TRENCH WITHIN PAVED AREA TO MEET L. A. COUNTY ROAD DEPT., OR CALIF. STATE HIGHWAY DEPT. REQUIREMENTS IN ACCORDANCE WITH PERMITS.
5. INDICATE FOUR FEET OF SEWER AT POINTS OF INTERFERENCE WITH POLES, S-A-119.
6. HOUSE LATERALS TO BE CONSTRUCTED WITH INVERTS AT PROPERTY LINE 6" JUST BELOW CURB GRADE EXCEPT AS NOTED.
7. ALL STRUCTURES SHALL BE BRICK SEWER STRUCTURES, S-A-104, EXCEPT AS NOTED.
8. FOR ALLOWABLE GRADE USE FORMULA NO. 1 SPEC'1, SEC. 54
9. MANHOLE TOPS IN UNIMPROVED RIGHTS-OF-WAY TO BE 6" ABOVE FINISHED GRADE.
10. The private engineer shall furnish the house lateral depth of the property line below the top of curb elevation for each house lateral on the grade sheet.



NOTE:
 GRADES TO WHICH THIS IMPROVEMENT IS TO BE CONSTRUCTED ARE SHOWN ON PLANS AND 'POLES' GRADE POINTS FOR TOP OF CURB, CENTER LINE OF STREETS, OR CENTER LINE OF ALLEYS ARE SHOWN BY CIRCLES ON PROFILES AT ALL POINTS BETWEEN DESIGNATED POINTS THE GRADE SHALL BE ESTABLISHED SO AS TO CONFORM TO A STRAIGHT LINE BETWEEN SAID DESIGNATED POINTS.
 ELEVATIONS ARE IN FEET ABOVE U.S.C. & G.S. MEAN SEA LEVEL, EXCEPT AS NOTED.
 THIS DRAWING AND THE DATA HEREON ARE HEREBY MADE A PART OF THE SPECIFICATIONS.
 WORK SHALL BE CONSTRUCTED ACCORDING TO SPECIFICATIONS ON FILE IN THE OFFICE OF THE COUNTY ENGINEER AND SHALL BE INSPECTED ONLY IN THE PRESENCE OF THE COUNTY ENGINEER.
 BEFORE WORK CAN BE STARTED, THE CONTRACTOR MUST OBTAIN A PERMIT TO EXCAVATE IN COUNTY STREETS FROM THE L. A. COUNTY ROAD DEPT., 100 W. 5TH ST. AND MAKE A REPORT WITH THE COUNTY ENGINEER, ROOM 324 FROM AMERICAN BLDG. 324 SO. BROADWAY APPROPRIATE TO COVER THE COST OF CONSTRUCTION INSPECTION AND SECTION PLANS.
 APPROVAL OF THIS PLAN BY THE COUNTY OF LOS ANGELES DOES NOT CONSTITUTE A REPRESENTATION AS TO THE ACCURACY OF THE LOCATION OF OR THE EXISTENCE OR NON-EXISTENCE OF ANY UNDERGROUND UTILITY PIPE, OR STRUCTURE WITHIN THE LIMITS OF THIS PROJECT THIS WORK APPLIES TO ALL PAGES.
 IF WORK IS TO BE DONE IN A STATE HIGHWAY, A PERMIT MUST BE OBTAINED FROM THE STATE OF CALIFORNIA, DIVISION OF HIGHWAYS, 128 SOUTH SPRING STREET.

COUNTY OF LOS ANGELES, CALIFORNIA
 APPROVED, JOHN A. LAMBE, COUNTY ENGINEER
 APPROVED, A. M. BAWN, CHIEF ENGINEER
 BY A. P. Collins, SANITATION ENGINEER
 BY A. M. Bawn, CHIEF ENGINEER
 CHECKED BY P. L. ... 9-14-56
 OFFICE OF COUNTY ENGINEER, REG. C. E. NO. 7160



NO CHARGE FOR CONNECTIONS
 (24,724)

TR. No. 2393
 M.B. 23-63
 16
 25389 PL.
 TR. No. 2393
 M.B. 23-63
 25
 014200 J.C.
 Construct J.C. around
 exist. 8" V.C.P. Street
 out pipe for connection.