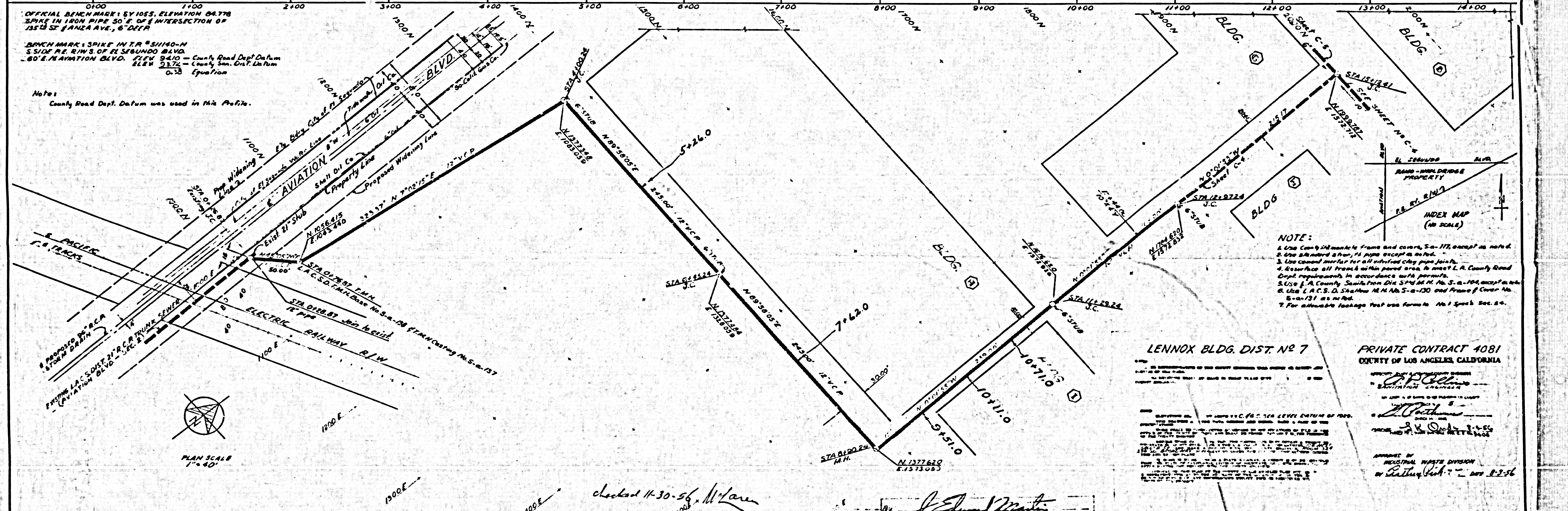


PROFILE
SCALE
HORIZ. 1" = 40'
VERT. 1" = 4'



OFFICIAL BENCHMARK: 571055. ELEVATION 84.78
SPIKE IN IRON PIPE 50' E. OF INTERSECTION OF
135TH ST & ANZA AVE., 6' DEEP

BRANCH MARK: SPIKE IN IRON PIPE 51140-N
S SIDE RE. RING 3. OF EL SEGUNDO BLVD.

80 E. AVIATION BLVD. ELEV. 94.10 - County Road Dept Datum
ELEV. 93.72 - County San. Dist. Datum
Elevation 0.38 Equation

Notes
County Road Dept. Datum was used in this Profile.

NOTE:
1. Use County 3/4" minimum frame and cover, S-172, except as noted.
2. Use standard 2' pipe except as noted.
3. Use standard mortar for all subsoil clay pipe joints.
4. Resurface all trench within paved area to meet L.A. County Road Dept. requirements in accordance with permits.
5. Use L.A. County, Standard Draw Sheet No. S-104, except as noted.
6. Use L.A. C.S. D. Standard M.H. No. S-a-130 and Frame of Cover No. S-a-131 as noted.
7. For allowable leakage Test use Formula No. 1 Sheet Sec. 2-a.

LENNOX BLDG. DIST. NO 7

PRIVATE CONTRACT 4081
COUNTY OF LOS ANGELES, CALIFORNIA

APPROVED BY
[Signature]
DATE 6-21-56

APPROVED BY
[Signature]
DATE 6-21-56

REVISIONS			
NO.	DATE	DESCRIPTION	BY

ALBERT C. MARTIN AND ASSOCIATES
ARCHITECTS AND ENGINEERS
333 SOUTH BEAUDRY AVENUE
LOS ANGELES 17, CALIFORNIA

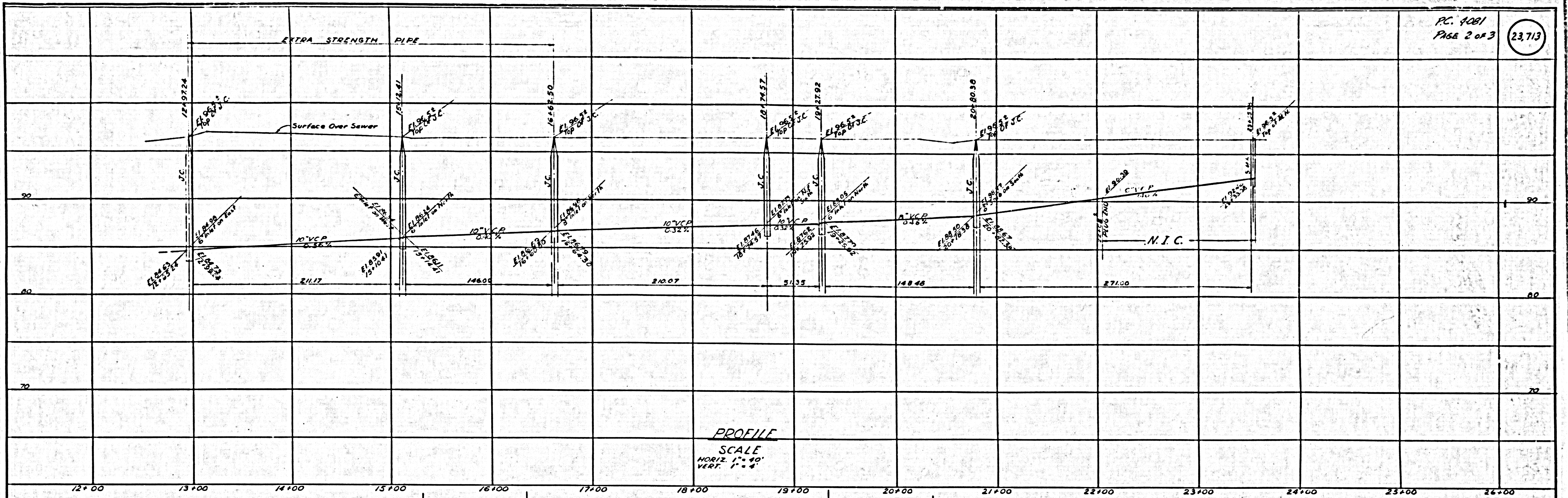
RESEARCH & DEVELOPMENT CENTER
THE RAMO-WOOLDRIDGE CORPORATION
5500 EL SEGUNDO BLVD. • LOS ANGELES, CALIFORNIA

DATE 6-21-56	JOB 1854	TITLE OF SHEET SITE DEVELOPMENT - UTILITIES PLAN AND PROFILE	SHEET NO. C-3
DATE ISSUED FOR CONST.	DRAWN G.A.	CHECKED G.A.	OF SHEETS

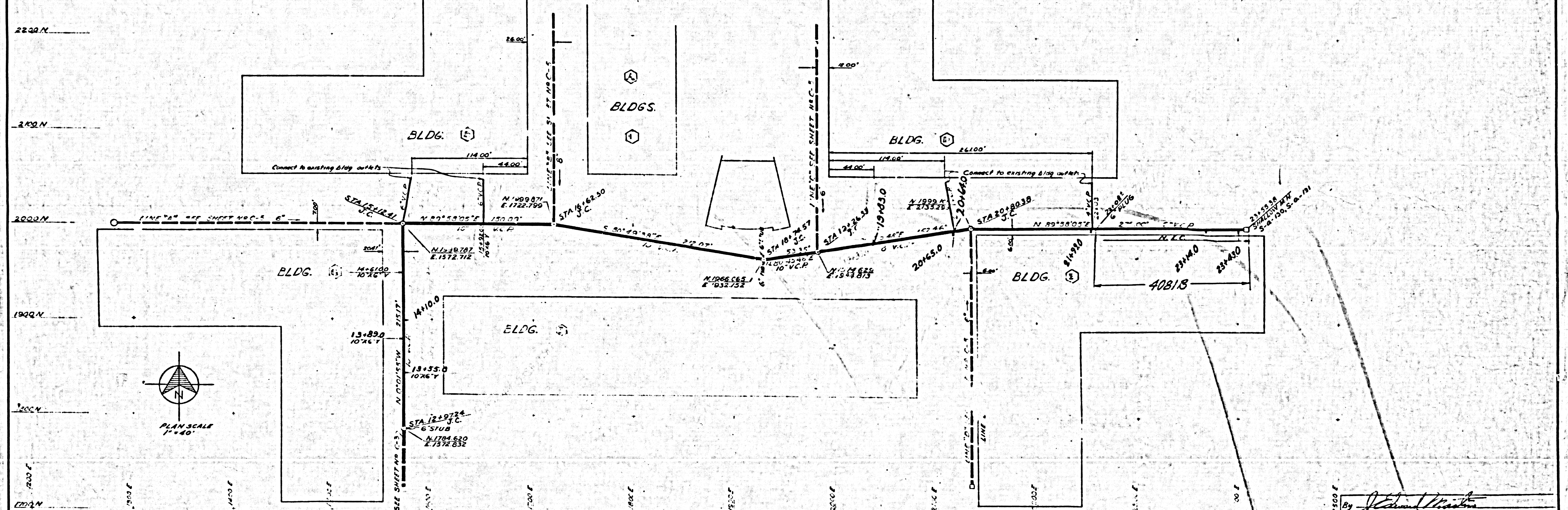
MAIN LINE - STA 0+00 TO STA 13+97.24

checked 11-30-56
[Signature]

[Signature]
REG. CE NO. 5790



PROFILE
SCALE
HORIZ. 1" = 40'
VERT. 1" = 4'



REVISIONS				
NO.	DATE	DESCRIPTION	BY	DATE

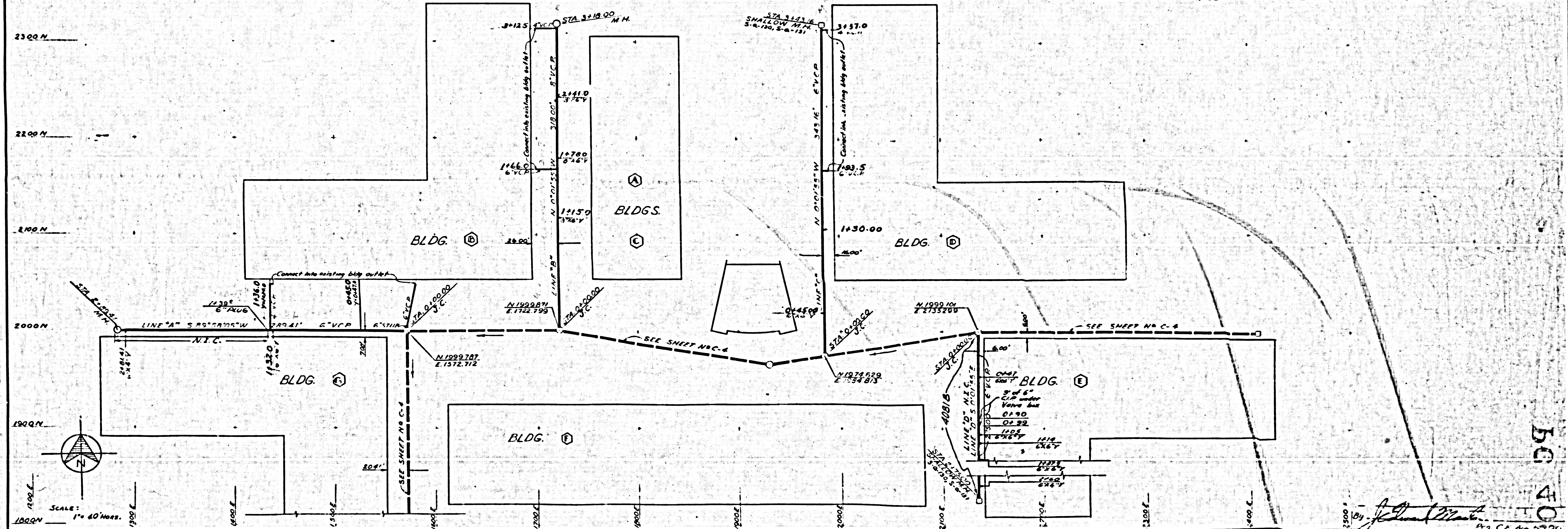
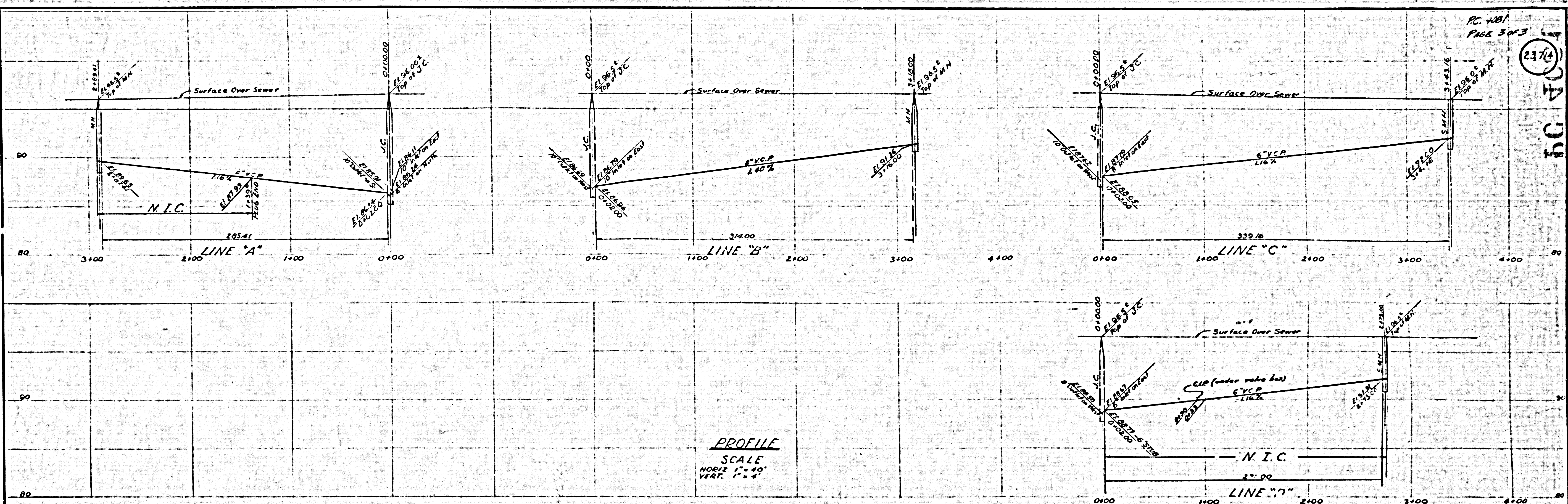
ALBERT C. MARTIN AND ASSOCIATES
ARCHITECTS AND ENGINEERS
333 SOUTH BEAUDRY AVENUE
LOS ANGELES 17, CALIFORNIA

RESEARCH & DEVELOPMENT CENTER
THE RAMO-WOOLDRIDGE CORPORATION
5500 EL SEGUNDO BLVD. • LOS ANGELES, CALIFORNIA

DATE 4-29-56	JOB 1554	TITLE OF SHEET SITE DEVELOPMENT - UTILITIES PLAN AND PROFILE SANITARY SEWER MAIN LINE - STA. 12+972.4 TO 23+55.28	SHEET NO. 6-4 OF SHEETS
DATE ISSUED FOR CONST.	DRAWING C.A.		
CHECKED D.P.	CHECKED D.P.		

By *John Martin* Proj. C.E. No. 5750

2374



NO.	DATE	REVISIONS	DESCRIPTION

ALBERT C. MARTIN AND ASSOCIATES
ARCHITECTS AND ENGINEERS
333 SOUTH BEAUDRY AVENUE
LOS ANGELES 17, CALIFORNIA

RESEARCH & DEVELOPMENT CENTER
THE RAMO-WOOLDRIDGE CORPORATION
5500 EL SEGUNDO BLVD. • LOS ANGELES, CALIFORNIA

DATE	6-19-56	DESIGNED	CA
DATE ISSUED FOR CONSTRUCTION	10-31-56	DRAWN	CA
		CHECKED	D

TITLE OF SHEET
SITE DEVELOPMENT - UTILITIES
PLAN AND PROFILE
SANITARY SEWER
LATERAL LINES "A", "B", "C", "D"

SHEET NO.
15
OF SHEETS

BC 4081