

NORWALK BLDG. DIST. NO. 42

PROFILE ALIGNMENT AND GRADE OF SANITARY SEWERS TO BE CONSTRUCTED IN LEFFINGWELL ROAD

P.C. 4085 PAGE 1
23406 (2)

PRIVATE CONTRACT NO. 4085

W.S. 34
1 SHEET, 2 PAGES
SCALE: 1" = 40' JULY, 1956

PREPARED IN THE OFFICES OF NATIONAL ENGINEERING CO.

By *Elsworth Ederson*
C.E.

FOR LEGEND SEE PLAN NO. S-A-64

- NOTES
- PROVIDE STAKES ON THE PROPERTY LINE OR PROPERTY LINES PRODUCED AT RIGHT ANGLES TO THE SEWER LINE AT THE CENTER LINE OF EACH MANHOLE.
 - NO REPRESENTATIVE OF THE COUNTY ENGINEER WILL SURVEY OR LAYOUT ANY PORTION OF THE WORK.
 - THE OWNER OR HIS AUTHORIZED REPRESENTATIVE SHALL FURNISH THE COUNTY ENGINEER WITH GRADE SHEETS AND STATION FOR ALL HOUSE LATERALS AND Y BRANCHES AND SHALL PROVIDE STAKES FOR THESE AT THEIR PROPER LOCATIONS WITH BEARING AND PLAINLY MARKED. ANY CHANGE IN LOCATION SHALL BE INDICATED IN WRITING BY THE OWNER OR HIS REPRESENTATIVE.
 - NO REVISIONS SHALL BE MADE IN THESE PLANS WITHOUT THE APPROVAL OF THE COUNTY ENGINEER.
 - USE STANDARD MANHOLE FRAMES AND COVERS, S-A-117, EXCEPT AS NOTED.
 - USE STANDARD STRENGTH PIPE EXCEPT AS NOTED.
 - USE CEMENT MORTAR FOR ALL VITRIFIED CLAY PIPE JOINTS.
 - RESURFACE ALL TRENCHES WITHIN PAVED AREA TO MEET L. A. COUNTY ROAD DEPT. OR CALIF. STATE HIGHWAY DEPT. REQUIREMENTS IN ACCORDANCE WITH PERMITS.
 - SHOULDER FOUR FEET OF SPWES AT POINTS OF INTERFERENCE WITH POLES, S-A-114.
 - ALL STRUCTURES SHALL BE BRICK SEWER STRUCTURES, S-A-184, EXCEPT AS NOTED.
 - FOR ALLOWABLE GRADE USE FORMULA NO. 1, S-111, SPEC. SEC. 24
 - MANHOLE TOPS IN UNIMPROVED AREAS MAY BE 1" ABOVE FINISHED GRADE.
 - THE PRIVATE ENGINEER IS TO FURNISH THE HOUSE LATERAL DEPTH AT THE PROPERTY LINE BELOW THE TOP OF CURB ELEVATION FOR EACH HOUSE LATERAL, ON THE GRASS STREET.

NOTE: GRADES TO WHICH THIS IMPROVEMENT IS TO BE CONSTRUCTED ARE SHOWN ON PLANS AND PROFILES. GRADE POINTS ARE TOP OF CURB, CENTER LINE OF STREETS, OR CENTER LINE OF ALLEYS AND SHOWN IN CIRCLE ON PROFILES AT ALL POINTS BETWEEN INDICATED POINTS THE GRADE SHALL BE ESTABLISHED SO AS TO CONFORM TO A STRAIGHT LINE DRAWN BETWEEN SAID DESIGNATED POINTS.

ELEVATIONS ARE IN FEET ABOVE U.S.C. & G.S. MEAN SEA LEVEL UNLESS OTHERWISE SPECIFIED.

THIS DRAWING AND THE DATA HEREON ARE HEREBY MADE A PART OF THE SPECIFICATIONS.

WORK SHALL BE CONSTRUCTED ACCORDING TO SPECIFICATIONS ON FILE IN THE OFFICE OF THE COUNTY ENGINEER AND SHALL BE PROSECUTED ONLY IN THE PRESENCE OF THE COUNTY ENGINEER.

BEFORE WORK CAN BE STARTED, THE CONTRACTOR MUST OBTAIN A PERMIT TO EXCAVATE IN COUNTY STREETS FROM THE L. A. COUNTY ROAD DEPT., 100 W. 2ND ST. AND MAKE A DEPOSIT WITH THE COUNTY ENGINEER, ROOM 224 PAVAN AMERICAN BUILDING, 228 1/2 BROADWAY SUFFICIENT TO COVER THE COST OF CONSTRUCTION INSPECTION AND RECORD PLANS.

APPROVAL OF THIS PLAN BY THE COUNTY OF LOS ANGELES DOES NOT CONSTITUTE A REPRESENTATION AS TO THE ACCURACY OF THE LOCATION OF OR THE EXISTENCE OR NON-EXISTENCE OF ANY UNDERGROUND UTILITY PIPE OR STRUCTURE WITHIN THE LIMITS OF THIS PROJECT. THIS NOTE APPLIES TO ALL PAGES.

IF WORK IS TO BE DONE ON A STATE HIGHWAY, A PERMIT MUST BE OBTAINED FROM THE STATE OF CALIFORNIA, DIVISION OF HIGHWAYS, 120 SOUTH SPRING STREET.

COUNTY OF LOS ANGELES, CALIFORNIA

APPROVED, JOHN A. LAMBE, COUNTY ENGINEER

APPROVED, A. M. RAWN, CHIEF ENGINEER

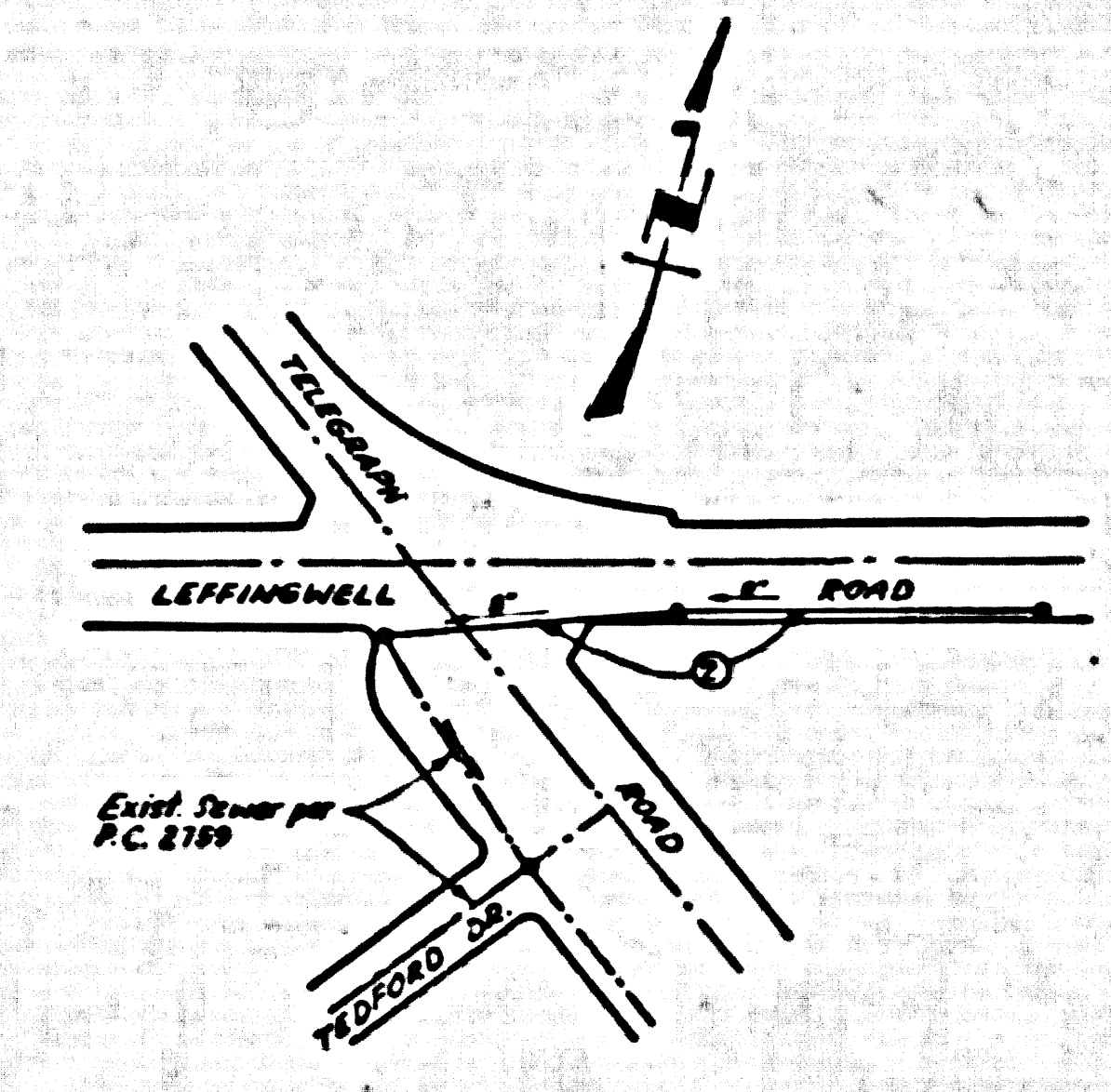
BY *P. P. Collins* SANITATION ENGINEER

CHECKED BY *S. K. White* 7-30-56
OFFICE OF COUNTY ENGINEER, DEPT. C & E NO. 3406

Approved by *Editha Lusk* INDUSTRIAL WASTE DIVISION
DATE *7/25/56*

B. M. S.Y. 274C
L & T edge cone walk to house
No. 1436, Leffingwell Road 45' S
& Leffingwell Rd. 55' W. & Burgess Ave.
Adj. Elev. 89.621'

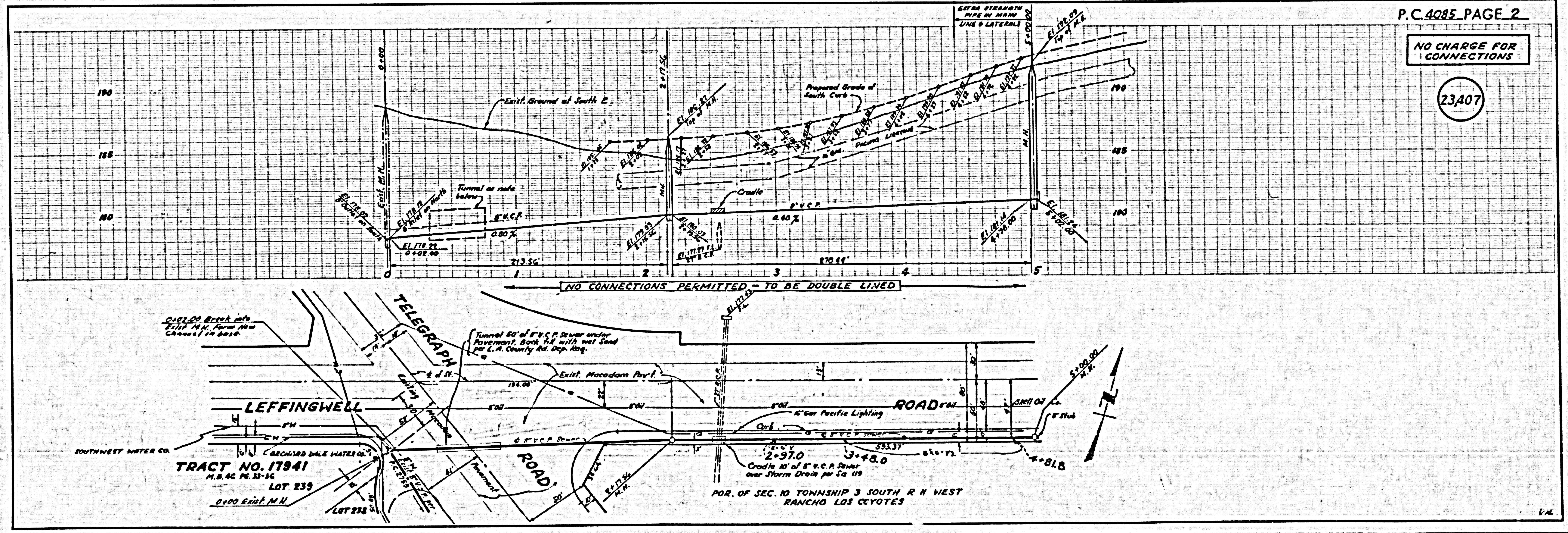
REVISION APPROVED: *S. K. White* 7-1-56
OFFICE OF COUNTY ENG. DEPT. C & E NO. 3406



NO CHARGE FOR CONNECTIONS
Plan No. 7-27-56

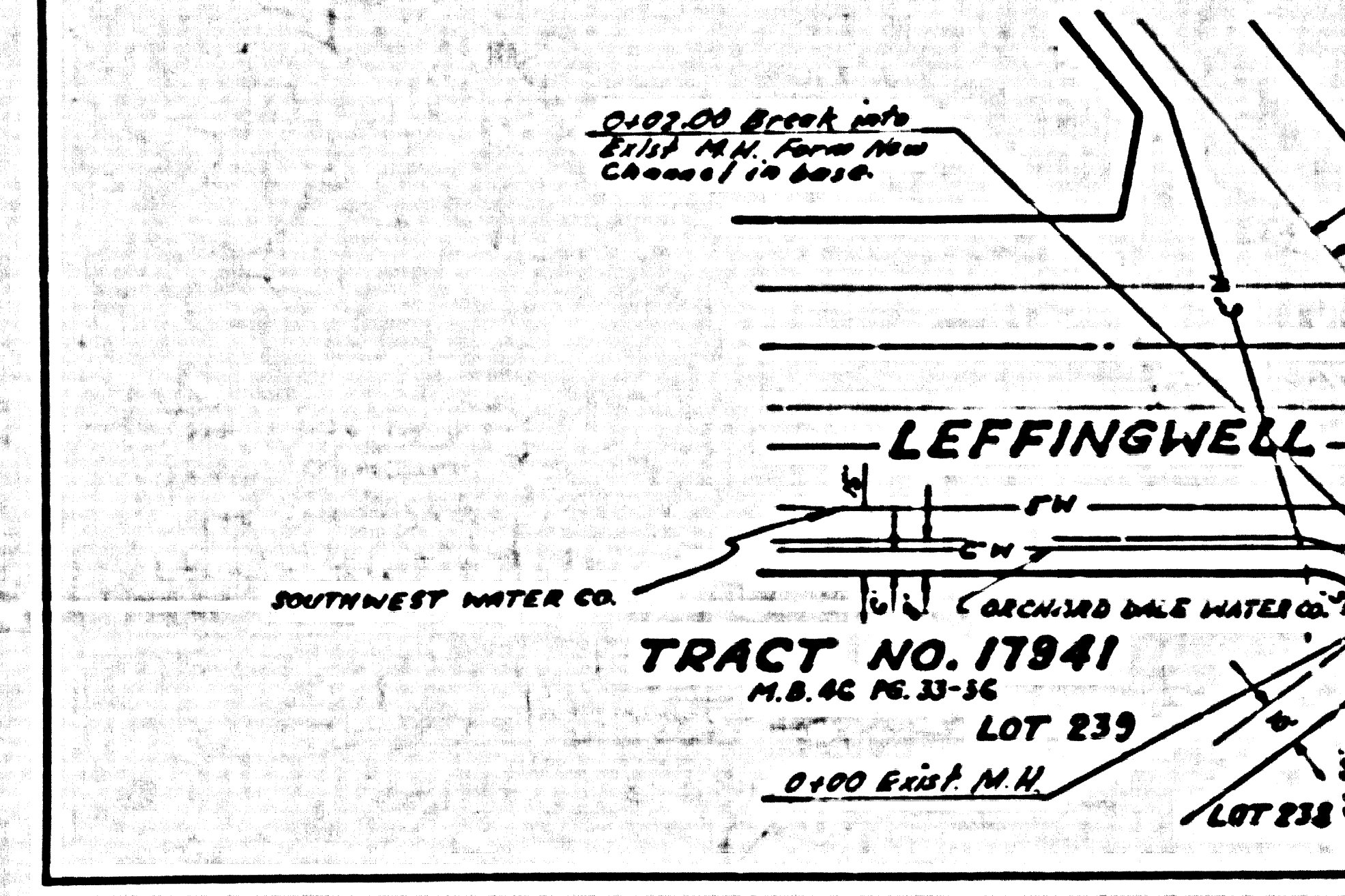
INDEX MAP
P.C. 4085
SCALE 1" = 200'

EXPLANATION:
PAGE 2 - ELEVATION OF MAIN LINE SEWER
SHOWN IN CIRCLES.



P.C. 4085 PAGE 2

NO CHARGE FOR CONNECTIONS
23407



LEFFINGWELL ROAD
P.C. 4085

P.C. 4085