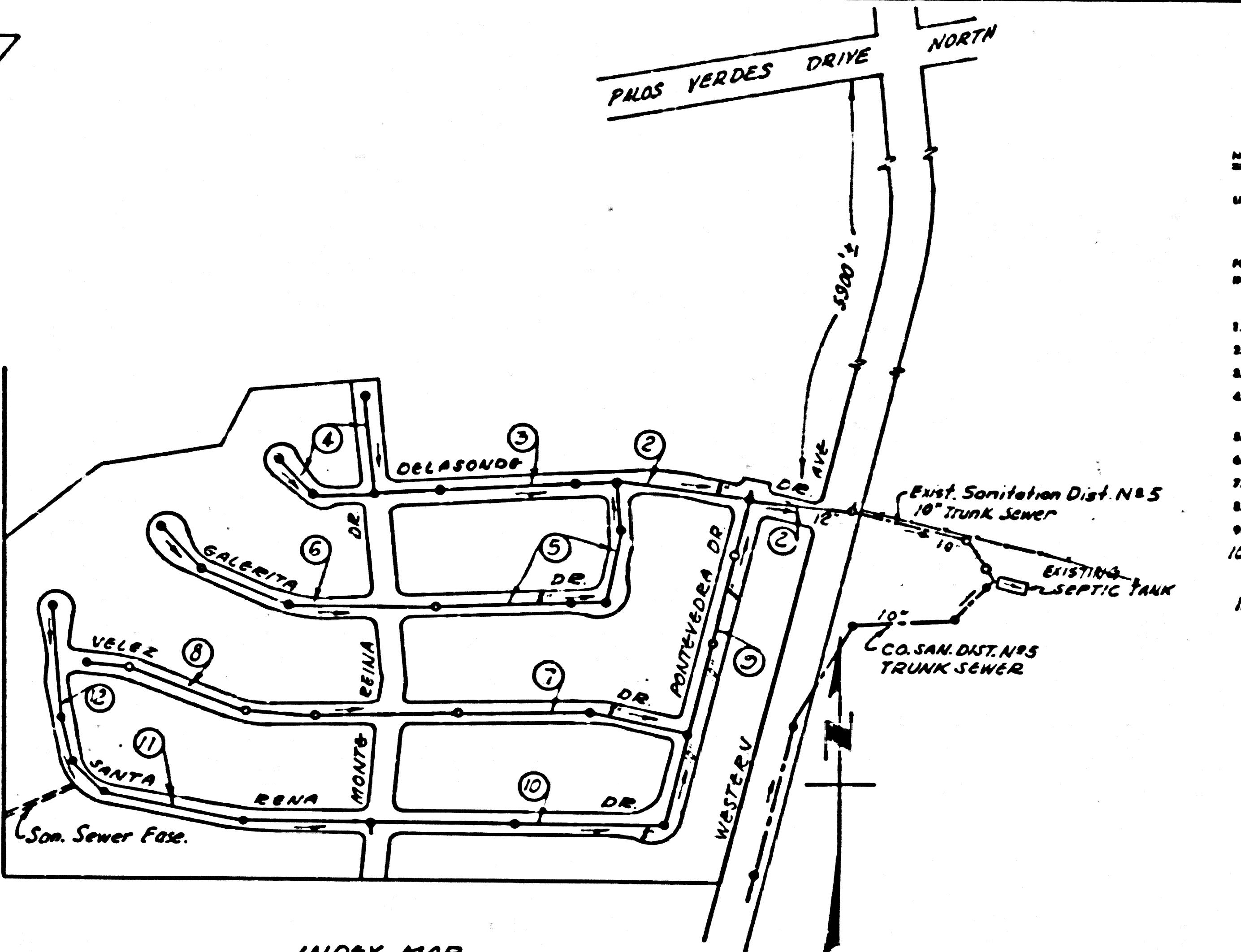


B.M. 35.4 L.B. 88G-P-3  
0.8 Miles S South of  
Palms Verdes Drive North Western Avenue  
Large Bolt Spike in Lead in Top of Most  
Westerly Corner of Concrete H.W. at N.W.  
End of 12" CLP Culvert. Elev 130.97G

DOUBLE SCALE



INDEX MAP  
TRACT NO 18968  
Scale 1"=300'  
PC. 4090

- NOTES CONT.
- No construction will be permitted in filled areas unless acceptable certification is submitted to the Construction Division of the County Engineer's Department that relative compaction is greater than 80%.
  - If compaction is less than 90% the sewer must be cradled as shown on the plans per S-166.
  - If compaction is greater than 90%, cradling is not required. However, joint compound must be substituted for cement mortar for all joints in filled areas.

Revision:  
Page 2 - Changed crossing of Western Ave. from leading to tunneling.

REVISION APPROVED:  
BY: [Signature] S-14-57  
OFFICE OF COUNTY ENGINEER - REG. C.E. NO. 3646

LOMITA BLDG. DIST. NO. 7.1

- NOTES:
- PROVIDE STAKES ON THE PROPERTY LINE OR PROPERTY LINES PRODUCED AT RIGHT ANGLES TO THE SEWER LINE AT THE CENTER LINE OF EACH MANHOLE.
  - NO REPRESENTATIVE OF THE COUNTY ENGINEER WILL SURVEY OR LAYOUT ANY PORTION OF THE WORK.
  - THE OWNER OR HIS AUTHORIZED REPRESENTATIVE SHALL FURNISH THE COUNTY ENGINEER WITH GRADE SHEETS AND STATION FOR ALL HOUSE LATERALS AND BRANCHES AND SHALL PROVIDE STAKES FOR THEM AT THEIR PROPER LOCATIONS WITH STATION AND BLANKET MARKERS. ANY CHANGE IN LOCATION SHALL BE INDICATED IN WRITING BY THE OWNER OR HIS REPRESENTATIVE.
  - NO DIVISIONS SHALL BE MADE IN THESE PLANS WITHOUT THE APPROVAL OF THE COUNTY ENGINEER.
  - USE STANDARD MANHOLE FRAMES AND COVERS, S-117.
  - USE STANDARD STRUCTURE PIPE EXCEPT AS NOTED.
  - USE CEMENT MORTAR FOR ALL VITRIFIED CLAY PIPE JOINTS.
  - RESURFACE ALL DRIVEWAYS WITHIN PAVED AREA TO MEET L.A. COUNTY ROAD DEPT. OR CALIF. STATE HIGHWAY DEPT. REQUIREMENTS IN ACCORDANCE WITH PERMITS.
  - SHOULDER ROAD FEET OF SEWER AT POINTS OF INTERFERENCE WITH POLES, S-119.
  - HOUSE LATERALS TO BE CONSTRUCTED WITH INVERTS AT PROPERTY LINE - 6" FEET BELOW CURB GRADE EXCEPT AS NOTED.
  - ALL STRUCTURES SHALL BE BRICK SEWER STRUCTURES, S-164.
  - FOR ALLOWABLE LEAKAGE TEST USE FORMULA NO. 1 - SPEC. 56.
  - MANHOLE TOPS IN UNIMPROVED RIGHTS-OF-WAY TO BE 6" ABOVE FINISHED GRADE.
  - THE PRIVATE ENGINEER IS TO FURNISH THE HOUSE LATERAL DEPTH AT THE PROPERTY LINE BELOW THE TOP OF CURB ELEVATION FOR EACH HOUSE LATERAL, ON THE GRADE SHEET.
  - SEE NOTE AT LEFT

DOUBLE SCALE

NO CHARGE FOR CONNECTIONS  
T. H. Edwards

ENGINEERING SERVICE CORPORATION  
1127 W. WASHINGTON BLVD.  
LOS ANGELES 15, CALIF. REG. 9-7281

REVISIONS		TRACED BY: MSL
		DES'G'D BY: J.B.
		CK'D BY:
		SUBMITTED:
SUB STRUCTURES OK'D		
W. O. NO.	DWS. NO.	DATE
6917-1		Nov. 1956 As Noted

PROFILE ALIGNMENT AND GRADE OF P.C. 4090  
SANITARY SEWERS PAGE 1

TO BE CONSTRUCTED IN  
TRACT NO 18968 (25044)

PRIVATE CONTRACT NO. 4090

W.S. 28  
6 SHEETS, 12 PAGES  
SCALE: 1"=4' NOV. 1956

PREPARED BY THE OFFICES OF  
ENGINEERING SERVICE CORPORATION

BY: [Signature] REG. C. E. NO. 3662  
FOR LEGEND SEE PLAN NO. S-A-64

NOTES:

GRADES TO WHICH THIS IMPROVEMENT IS TO BE CONSTRUCTED ARE SHOWN ON PLANS AND PROFILES. GRADE POINTS FOR TOP OF CURBS, CENTER LINE OF STREETS, OR CENTER LINE OF ALLEYS ARE SHOWN BY CIRCLES ON PROFILES. AT ALL POINTS BETWEEN REGULAR POINTS THE GRADE SHALL BE ESTABLISHED SO AS TO COMFORM TO A STRAIGHT LINE DRAWN BETWEEN SAID REGULAR POINTS.

ELEVATIONS ARE IN FEET ABOVE U.S.C. & G.S. SEA LEVEL DATUM OF 1929.

THIS DRAWING AND THE DATA HEREON ARE HEREBY MADE A PART OF THE SPECIFICATIONS. WORK SHALL BE CONSTRUCTED ACCORDING TO SPECIFICATIONS ON FILE IN THE OFFICE OF THE COUNTY ENGINEER AND SHALL BE PROSECUTED ONLY IN THE PRESENCE OF THE COUNTY ENGINEER.

BEFORE WORK CAN BE STARTED, THE CONTRACTOR MUST OBTAIN A PERMIT TO EXCAVATE IN COUNTY STREETS FROM THE L.A. COUNTY ROAD DEPT., 180 W. 2ND ST. AND MAKE A DEPOSIT WITH THE COUNTY ENGINEER, ROOM 234 FARM AMERICAN BLDG., 332 SO. BROADWAY, SUFFICIENT TO COVER THE COST OF CONSTRUCTION INSPECTION AND RECORD PLANS.

APPROVAL OF THIS PLAN BY THE COUNTY OF LOS ANGELES DOES NOT CONSTITUTE A REPRESENTATION AS TO THE ACCURACY OF THE LOCATION OF OR THE EXISTENCE OR NON-EXISTENCE OF ANY UNDERGROUND UTILITY PIPE, OR STRUCTURE WITHIN THE LIMITS OF THIS PROJECT. THE NOTE APPLIES TO ALL PAGES.

IF WORK IS TO BE DONE IN A STATE HIGHWAY, A PERMIT MUST BE OBTAINED FROM THE STATE OF CALIFORNIA, DIVISION OF HIGHWAYS, 120 SOUTH SPRING STREET.

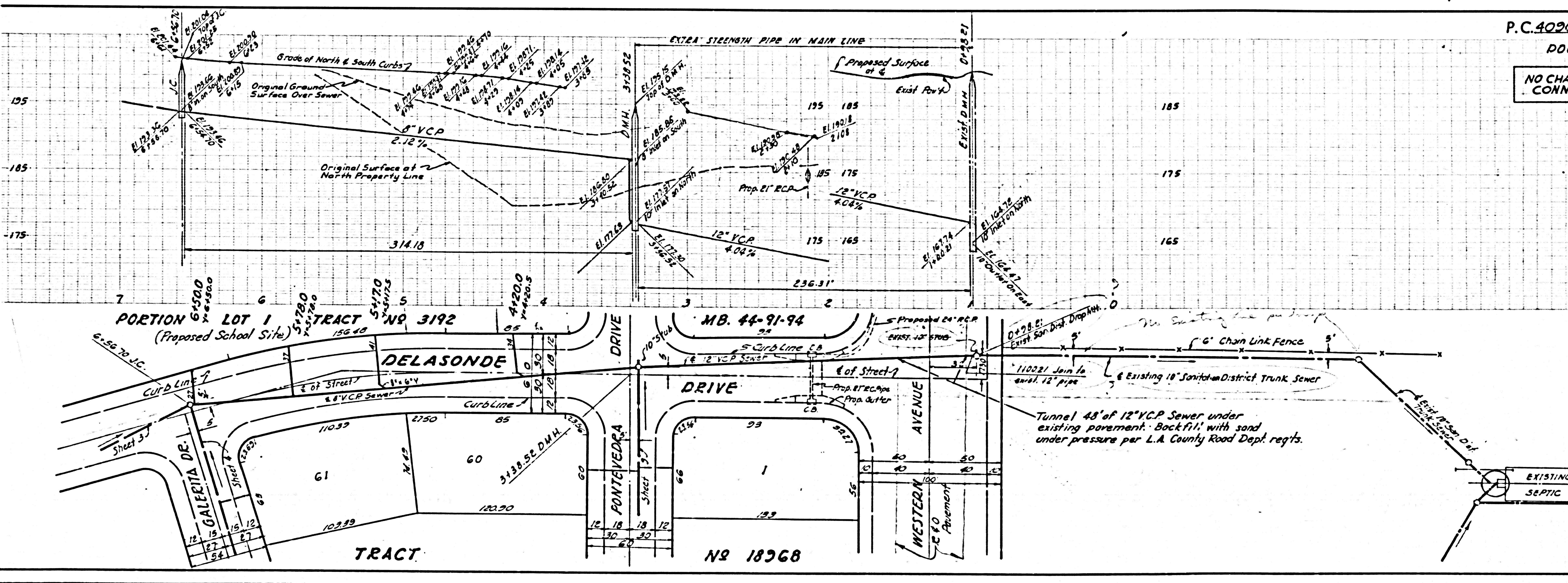
COUNTY OF LOS ANGELES, CALIFORNIA

APPROVED, JOHN A. LAMBE, COUNTY ENGINEER  
APPROVED, A. M. BAWM, CHIEF ENGINEER  
BY: [Signature] SANITATION ENGINEER  
BY: [Signature] OFFICE ENGINEER  
CHECKED BY: [Signature] 5-1-57

before bringing into any existing structure, OFFICE OF COUNTY ENGINEER, REG. C. E. NO. 3456  
and before final acceptance of this work,  
County Sanitation District should be notified  
in order that required inspection may be made.

P.C. 4090 PAGE 2  
DOUBLE SCALE

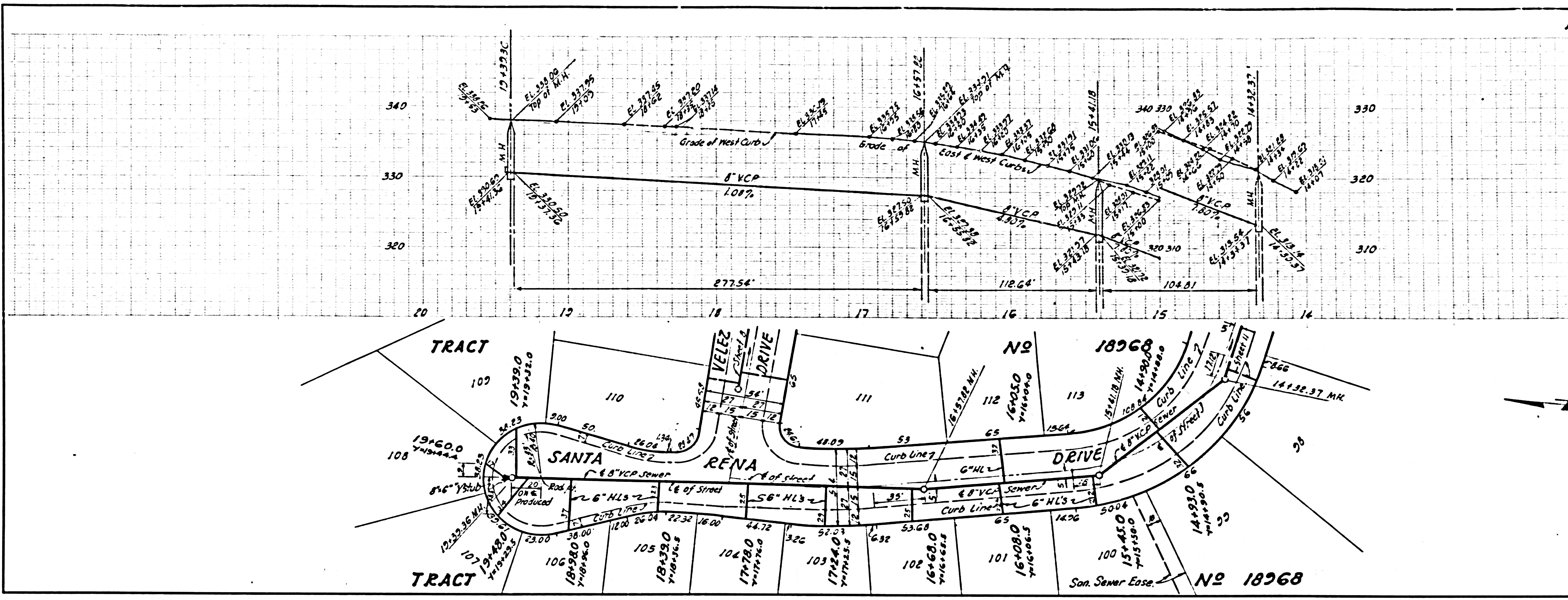
NO CHARGE FOR CONNECTIONS  
(25045)



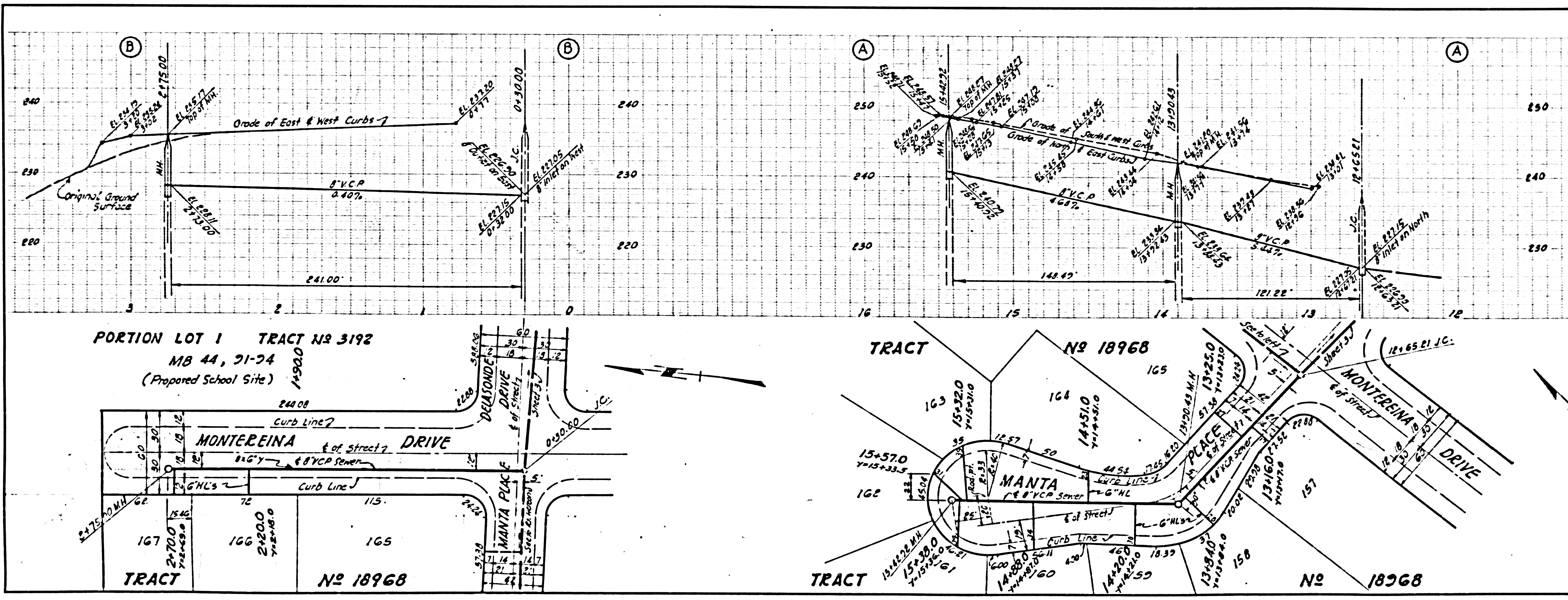
Tunnel 48' of 12" VCP Sewer under existing pavement. Backfill with sand under pressure per L.A. County Road Dept. regts.

EXISTING SEPTIC TANK

25,054



25,055



PORTION LOT 1 TRACT NO 3192  
 MB 44, 91-94  
 (Proposed School Site)  
 15900

MONTEIREINA DRIVE  
 115' 6" VCP Sewer

MANTA PLACE  
 115'

TRACT NO 18968

TRACT NO 18968

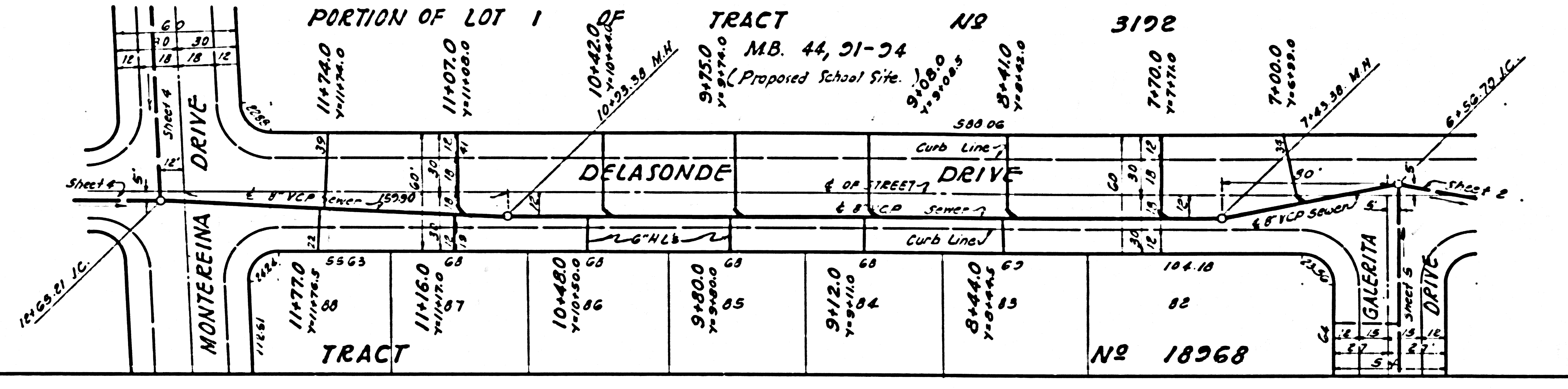
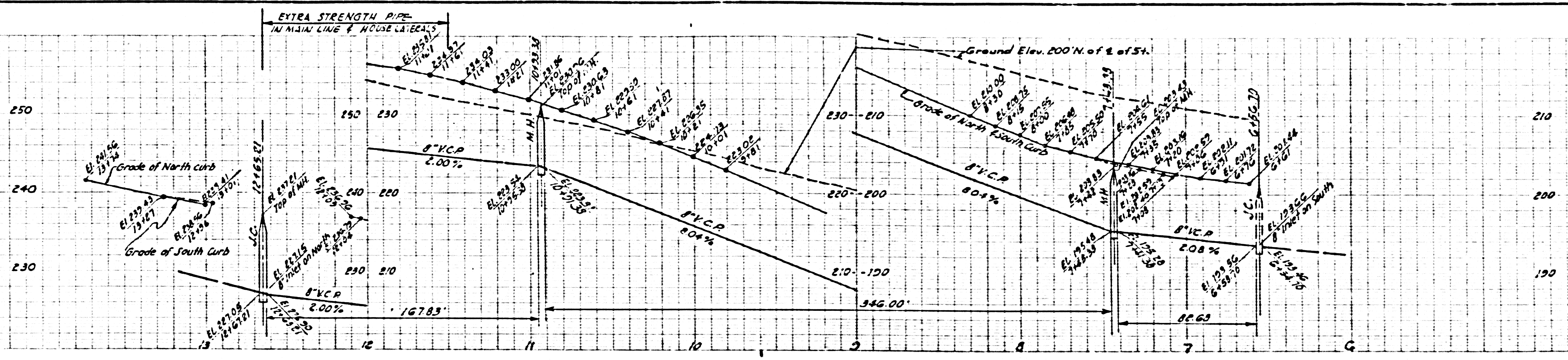
MANTA DRIVE  
 8" VCP Sewer

MONTERRINA DRIVE  
 12+65.21 J.C.

TRACT NO 18968

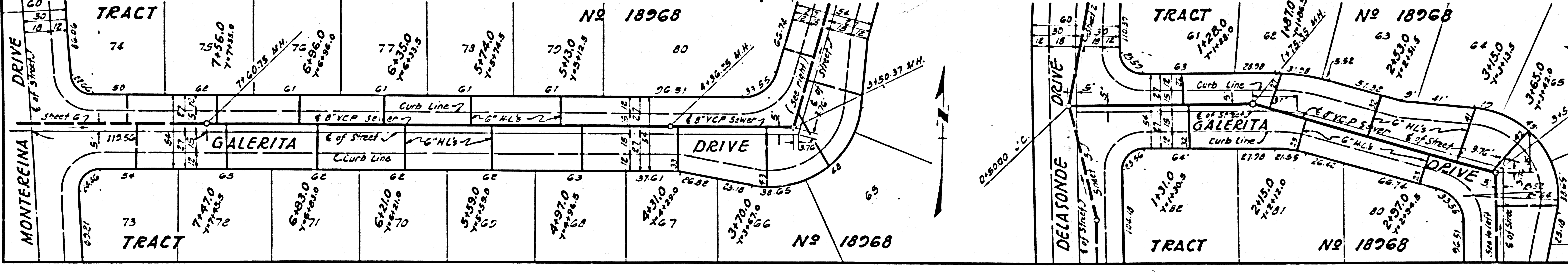
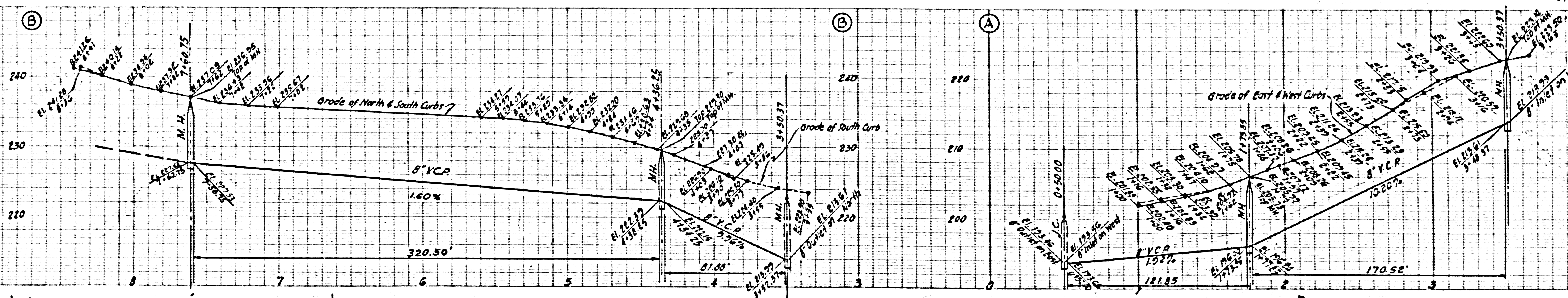
PC 4090 PAGE 3  
 DOUBLE SCALE  
 NO CHARGE FOR CONNECTION

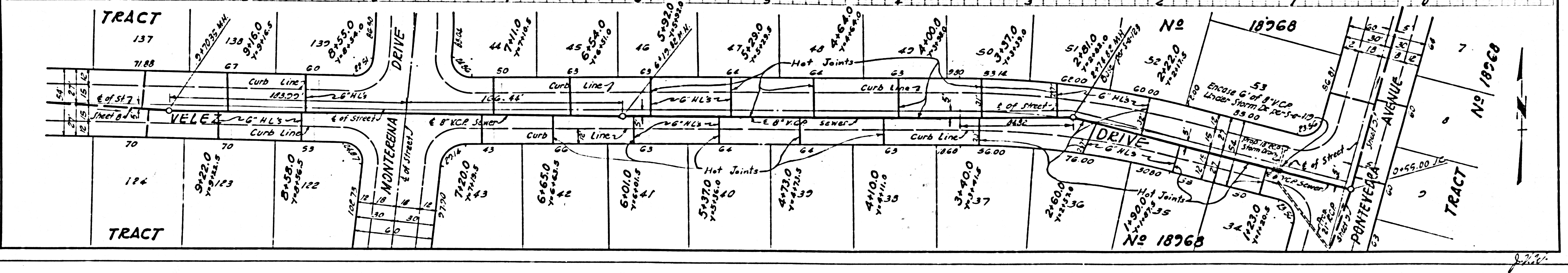
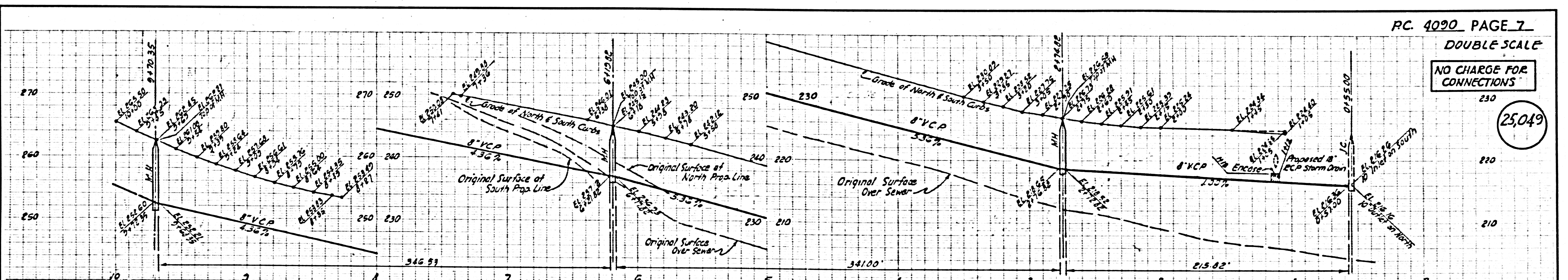
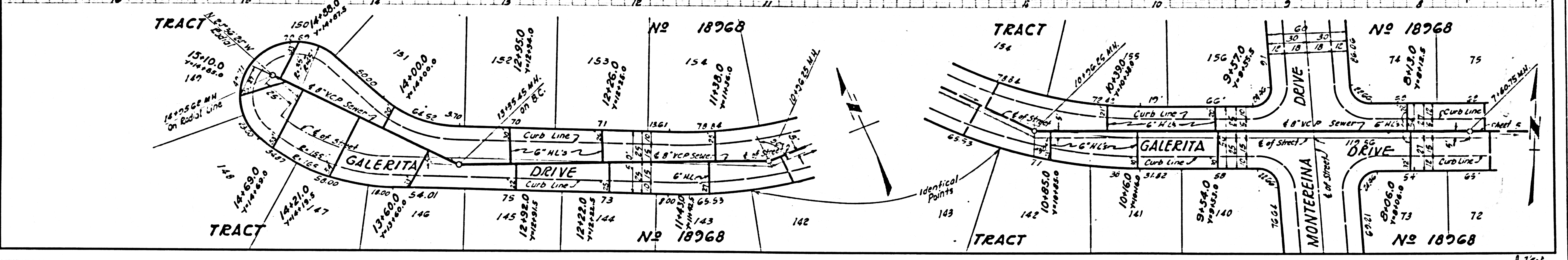
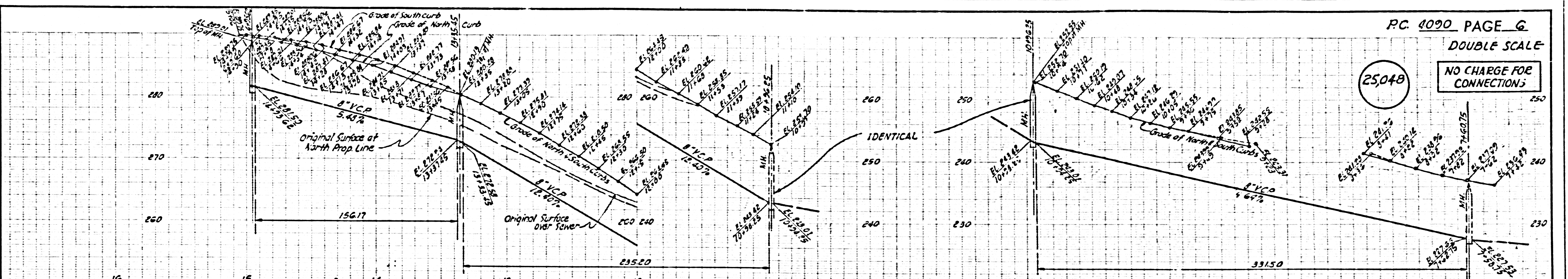
25046



PC 4090 PAGE 5  
 DOUBLE SCALE  
 NO CHARGE FOR CONNECTION

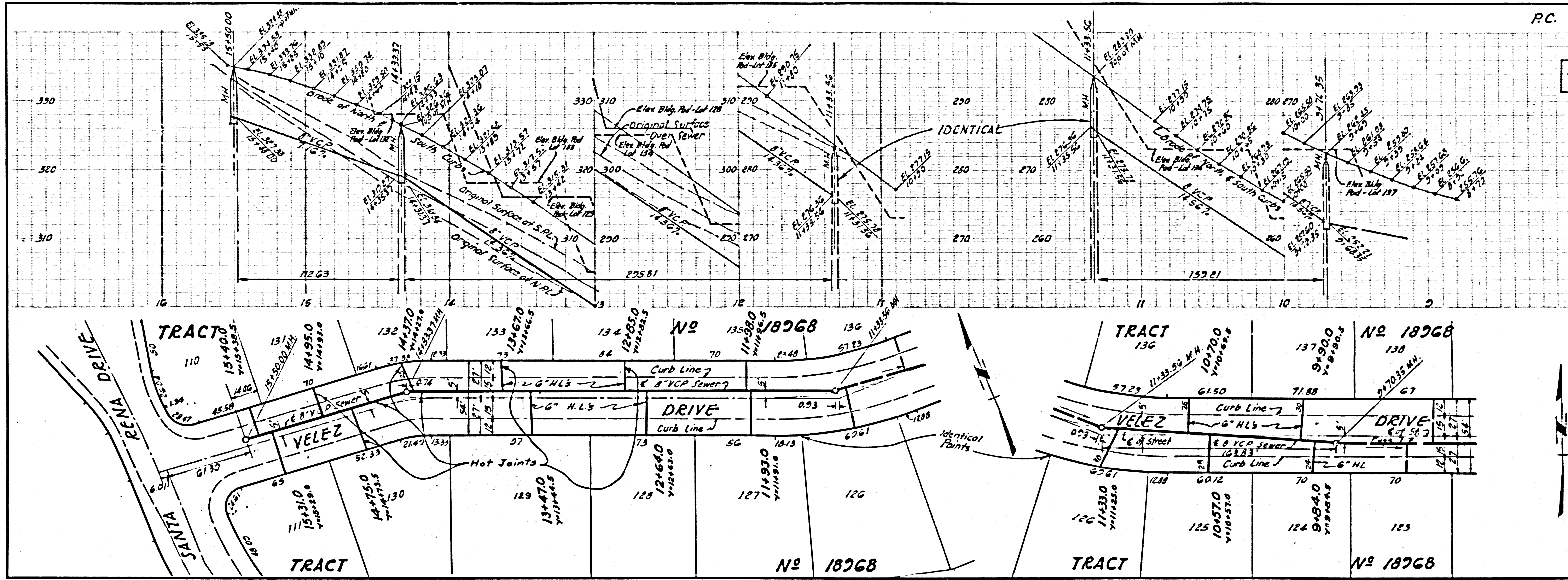
25047





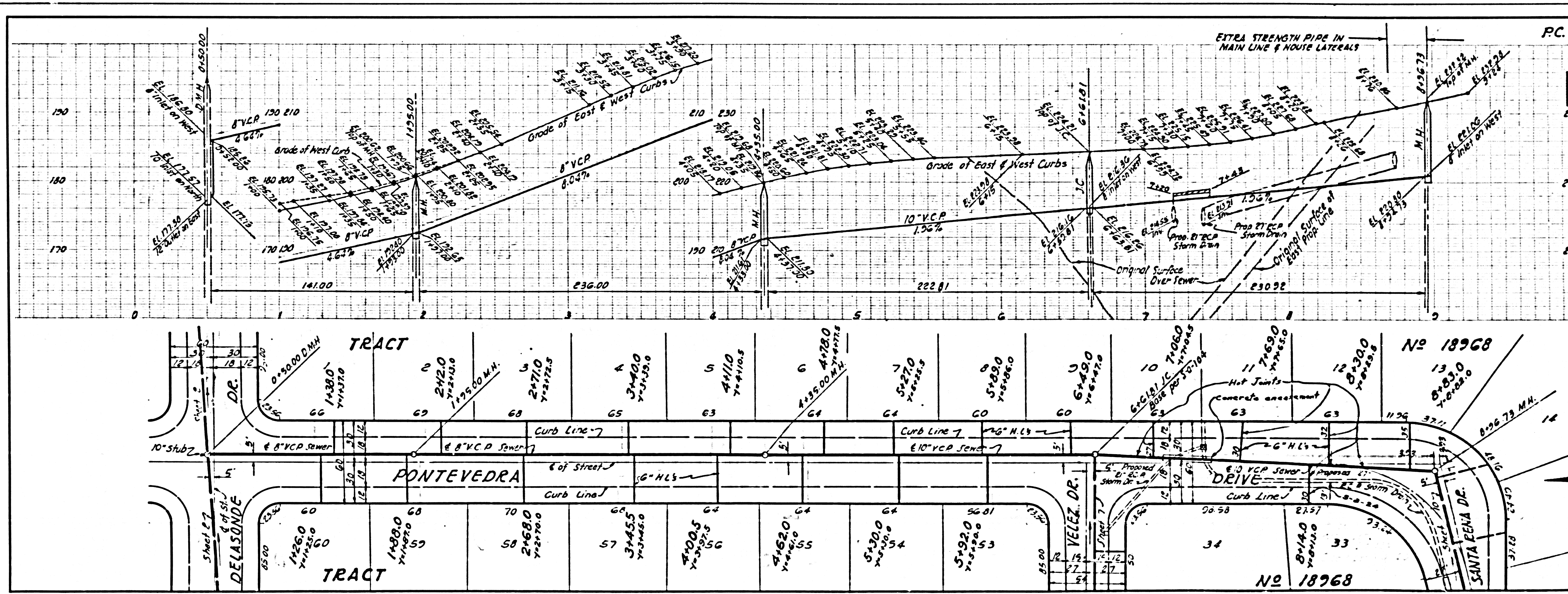
NO CHARGE FOR CONNECTIONS

25,050



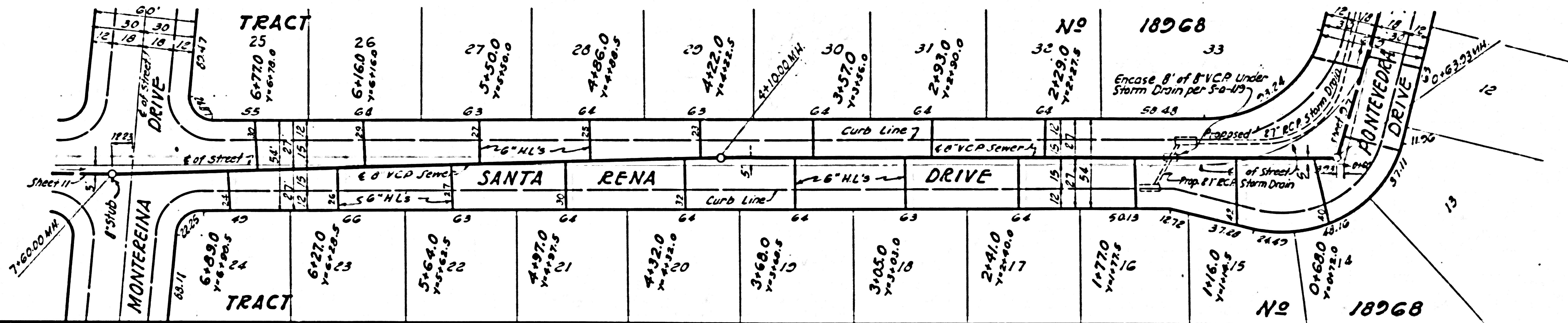
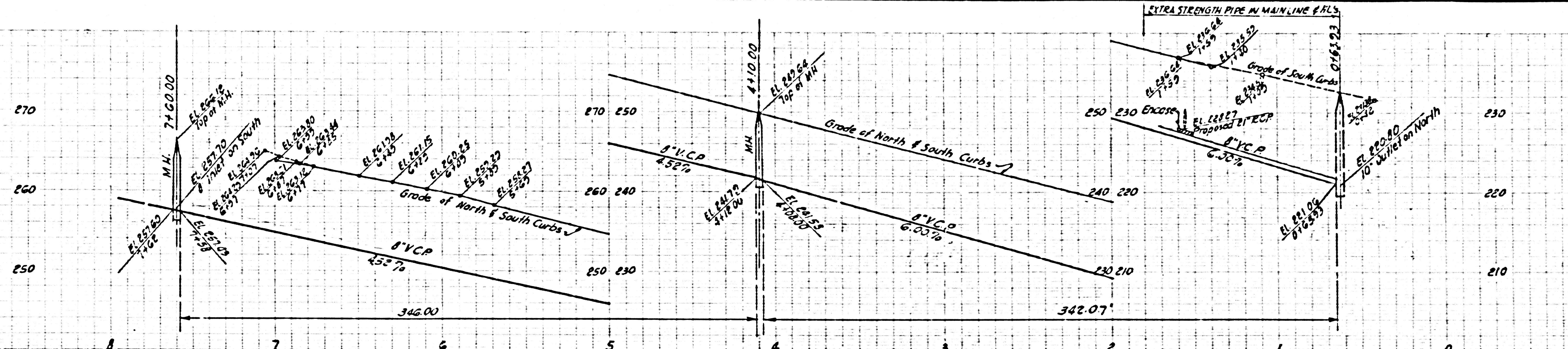
NO CHARGE FOR CONNECTIONS

25,051



NO CHARGE FOR CONNECTIONS

25052



NO CHARGE FOR CONNECTIONS

25053

