

NORWALK BLDG. DIST. NO. 4.2

PROFILE ALIGNMENT AND GRADE OF **P.C. 4092**
SANITARY SEWERS PAGE 1
 TO BE CONSTRUCTED IN

TRACT No. 22357
PRIVATE CONTRACT NO. 4092

W.S. 34
 6 SHEETS, 11 PAGES
 SCALE: 1" = 40' HORIZ. 1" = 4' VERT. **JULY, 1958**

25657

PREPARED IN THE OFFICES OF
KEMMERER ENGINEERING CO., INC.
 By: *Hans C. Kemmerer*
 REG. C. E. NO. 5244

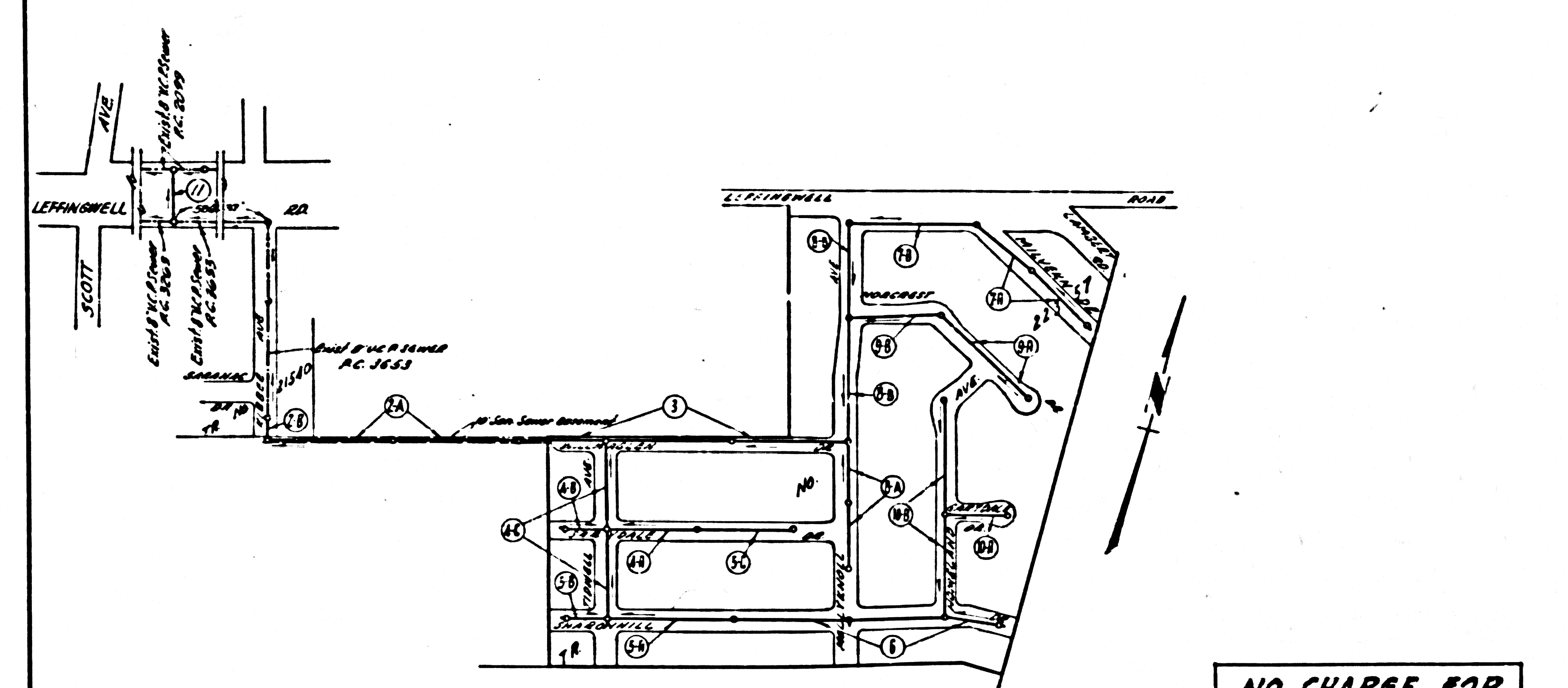
FOR LEGEND SEE PLAN NO. S-A-64

- NOTES**
- PROVIDE STAKES ON THE PROPERTY LINE OR PROPERTY LINES PRODUCED AT RIGHT ANGLES TO THE SEWER LINE AT THE CENTER LINE OF EACH MANHOLE.
 - NO REPRESENTATIVE OF THE COUNTY ENGINEER WILL SURVEY OR LAYOUT ANY PORTION OF THE WORK.
 - THE OWNER OR HIS AUTHORIZED REPRESENTATIVE SHALL FURNISH THE COUNTY ENGINEER WITH GRADE SHEETS AND STATIONING FOR ALL HOUSE LATERALS AND Y BRANCHES AND SHALL PROVIDE STAKES FOR THEM AT THEIR PROPER LOCATIONS WITH STATIONING PLAINLY MARKED. ANY CHANGE IN LOCATION SHALL BE REQUESTED IN WRITING BY THE OWNER OR HIS REPRESENTATIVE.
 - NO REVISIONS SHALL BE MADE IN THESE PLANS WITHOUT THE APPROVAL OF THE COUNTY ENGINEER.
 - USE STANDARD MANHOLE FRAMES AND COVERS, S-A-117, EXCEPT AS NOTED.
 - USE STANDARD STRENGTH PIPE EXCEPT AS NOTED.
 - USE CEMENT MORTAR FOR ALL VITRIFIED CLAY PIPE JOINTS.
 - RESURFACE ALL TRENCH WITHIN PAVED AREA TO MEET L. A. COUNTY ROAD DEPT. OR CALIF. STATE HIGHWAY DEPT. REQUIREMENTS IN ACCORDANCE WITH PERMITS.
 - ENCASE FOUR FEET OF SEWER AT POINTS OF INTERFERENCE WITH POLES, S-A-119.
 - HOUSE LATERALS TO BE CONSTRUCTED WITH INVERTS AT PROPERTY LINE 6 FEET BELOW CURB GRADE EXCEPT AS NOTED.
 - ALL STRUCTURES SHALL BE BRICK SEWER STRUCTURES, S-A-104, EXCEPT AS NOTED.
 - FOR ALLOWABLE LEAKAGE TEST USE FORMULA NO. 7 SPEC. SEC. 146.
 - MANHOLE TOPS IN UNIMPROVED RIGHTS OF WAY TO BE 6" ABOVE FINISHED GRADE.
 - THE PRIVATE ENGINEER IS TO FURNISH THE HOUSE LATERAL DEPTH AT THE PROPERTY LINE BELOW THE TOP OF CURB ELEVATION FOR EACH HOUSE LATERAL, ON THE GRADE SHEET.

BY MEY SUGELA CO. 617 107 101 S.W. OF 101ST W. 1ST R. 107 S. E. OF LEFFINGWELL ROAD (2000 L.F.), 353 514 754 535

NO CHARGE FOR CONNECTIONS
July 1-3-57

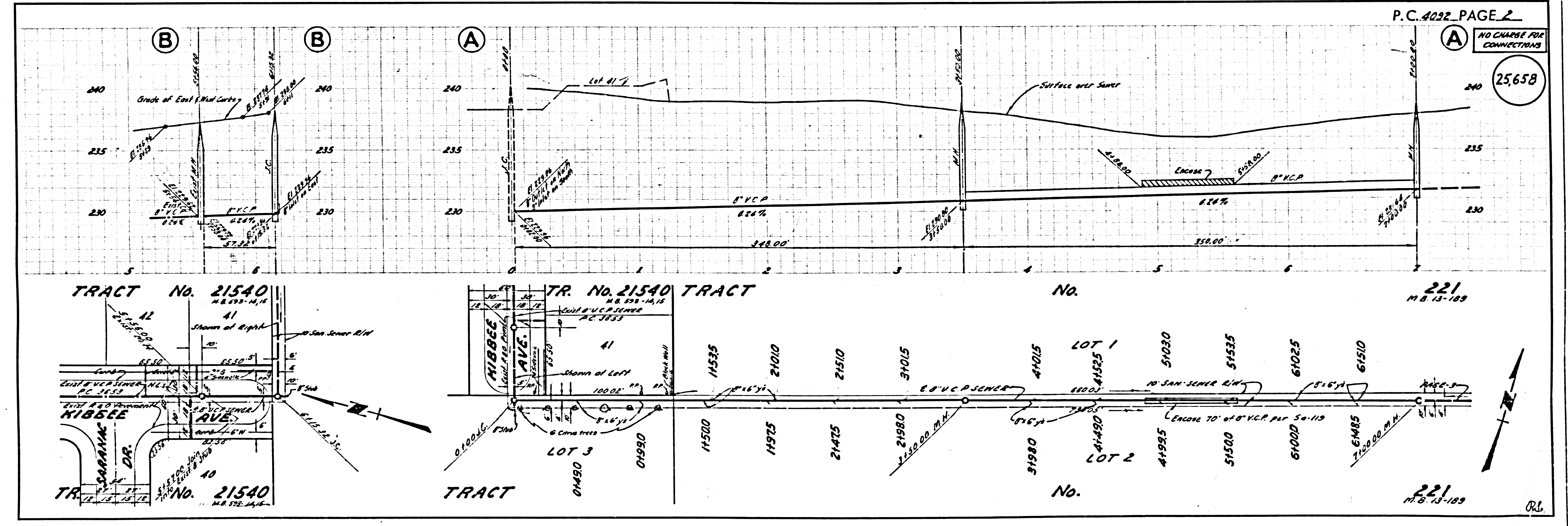
REVISION APPROVED:
[Signature] Oct 21, 1957
 L.K. O'Donnell - Reg. C.E. No. 9406
 Office of County Engineer.



INDEX MAP
 TRACT No. 22357
 P.C. 4092 SCALE: 1/8" = 100'

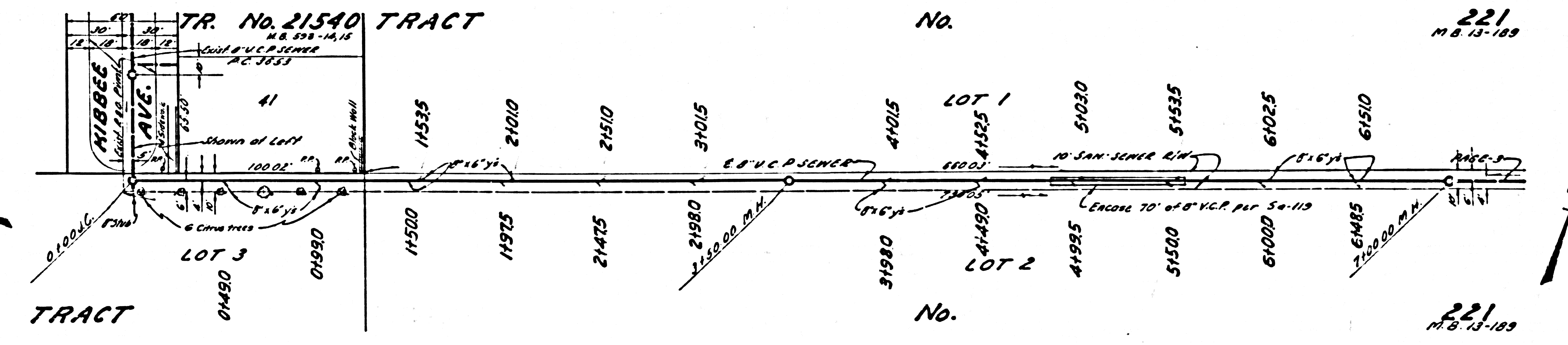
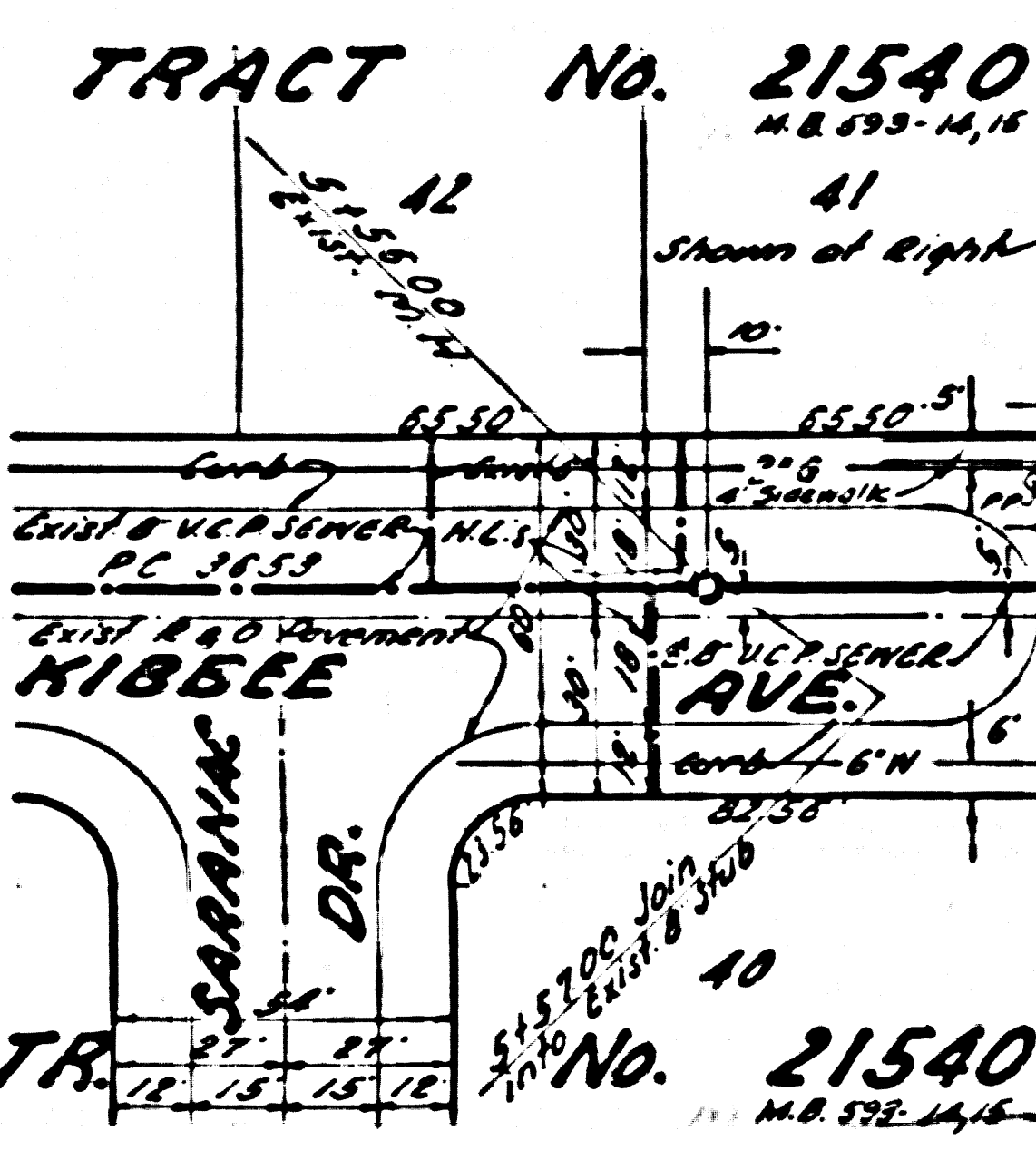
NOTE:
 GRADES TO WHICH THIS IMPROVEMENT IS TO BE CONSTRUCTED ARE SHOWN ON PLANS AND PROFILES. GRADE POINTS FOR TOP OF CURB, CENTER LINE OF STREETS, OR CENTER LINE OF ALLEYS ARE SHOWN BY CIRCLES ON PROFILES. AT ALL POINTS BETWEEN DESIGNATED POINTS THE GRADE SHALL BE ESTABLISHED SO AS TO CONFORM TO A STRAIGHT LINE DRAWN BETWEEN SAID DESIGNATED POINTS.
 ELEVATIONS ARE IN FEET ABOVE U.S.C. & G.S. MEAN LEVEL DATUM OF 1929.
 THIS DRAWING AND THE DATA HEREON ARE HEREBY MADE A PART OF THE SPECIFICATIONS.
 WORK SHALL BE CONSTRUCTED ACCORDING TO SPECIFICATIONS FILED IN THE OFFICE OF THE COUNTY ENGINEER AND SHALL BE PROSECUTED ONLY IN THE PRESENCE OF THE COUNTY ENGINEER.
 BEFORE WORK CAN BE STARTED, THE CONTRACTOR MUST OBTAIN A PERMIT TO EXCAVATE IN COUNTY STREETS FROM THE L. A. COUNTY ROAD DEPT., 100 W. 3RD ST. AND MAKE A DEPOSIT WITH THE COUNTY ENGINEER, ROOM 324 PAN AMERICAN BUILDING, 215 SO. BROADWAY, SUFFICIENT TO COVER THE COST OF CONSTRUCTION INSPECTION AND RECORD PLANS.
 APPROVAL OF THIS PLAN BY THE COUNTY OF LOS ANGELES DOES NOT CONSTITUTE A REPRESENTATION AS TO THE ACCURACY OF THE LOCATION OF OR THE EXISTENCE OR NON-EXISTENCE OF ANY UNBARRICADED UTILITY PIPE, OR STRUCTURE WITHIN THE LIMITS OF THIS PROJECT. THIS NOTE APPLIES TO ALL PAGES.
 IF WORK IS TO BE DONE IN A STATE HIGHWAY, A PERMIT MUST BE OBTAINED FROM THE STATE OF CALIFORNIA, DIVISION OF HIGHWAYS, 126 SOUTH SPRING STREET.

COUNTY OF LOS ANGELES, CALIFORNIA
 APPROVED, JOHN A. LAMBE, COUNTY ENGINEER
 APPROVED, A. M. BAWN, CHIEF ENGINEER
 BY: *G.P. Collins* (Sanitation Engineer) BY: *[Signature]* (Office Engineer)
 CHECKED BY: *R. K. O'Donnell* 1-9-57
 OFFICE OF COUNTY ENGINEER, REG. C. E. NO. 7860



P.C. 4092 PAGE 2

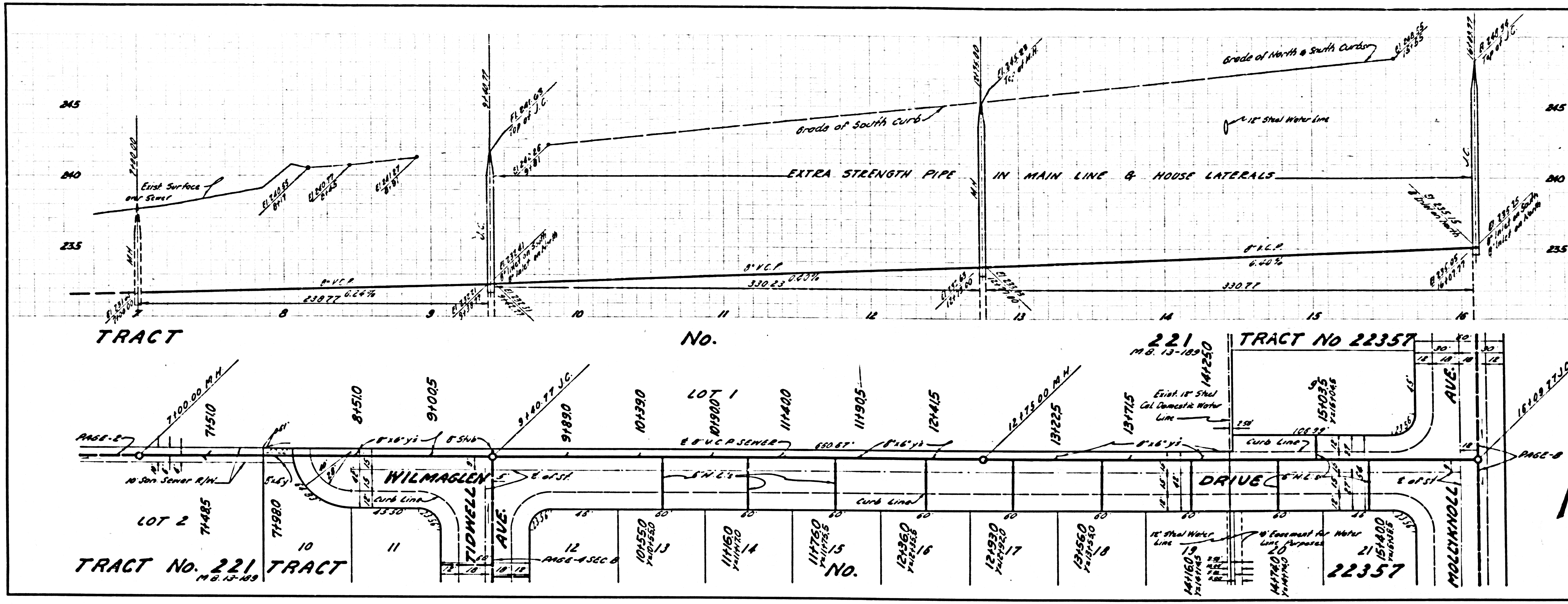
NO CHARGE FOR CONNECTIONS
25658



ORL

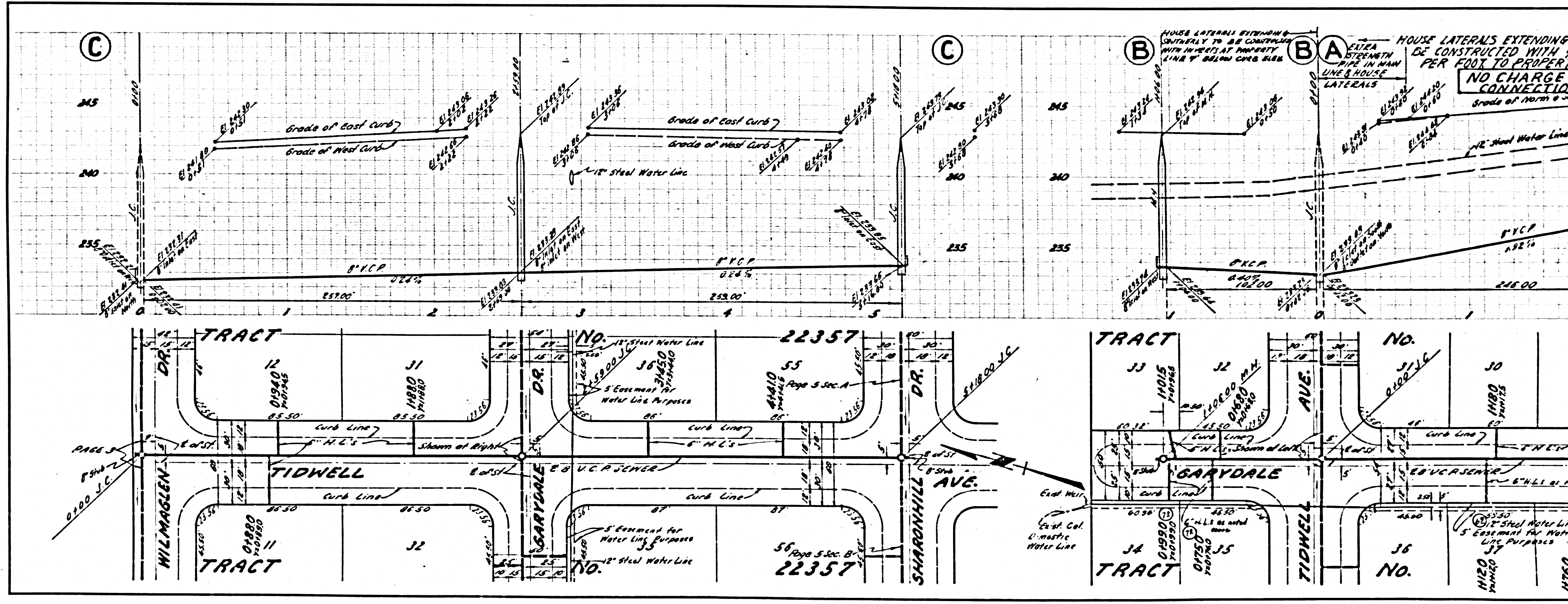
NO CHARGE FOR CONNECTIONS

25,659



NO CHARGE FOR CONNECTIONS

25,660

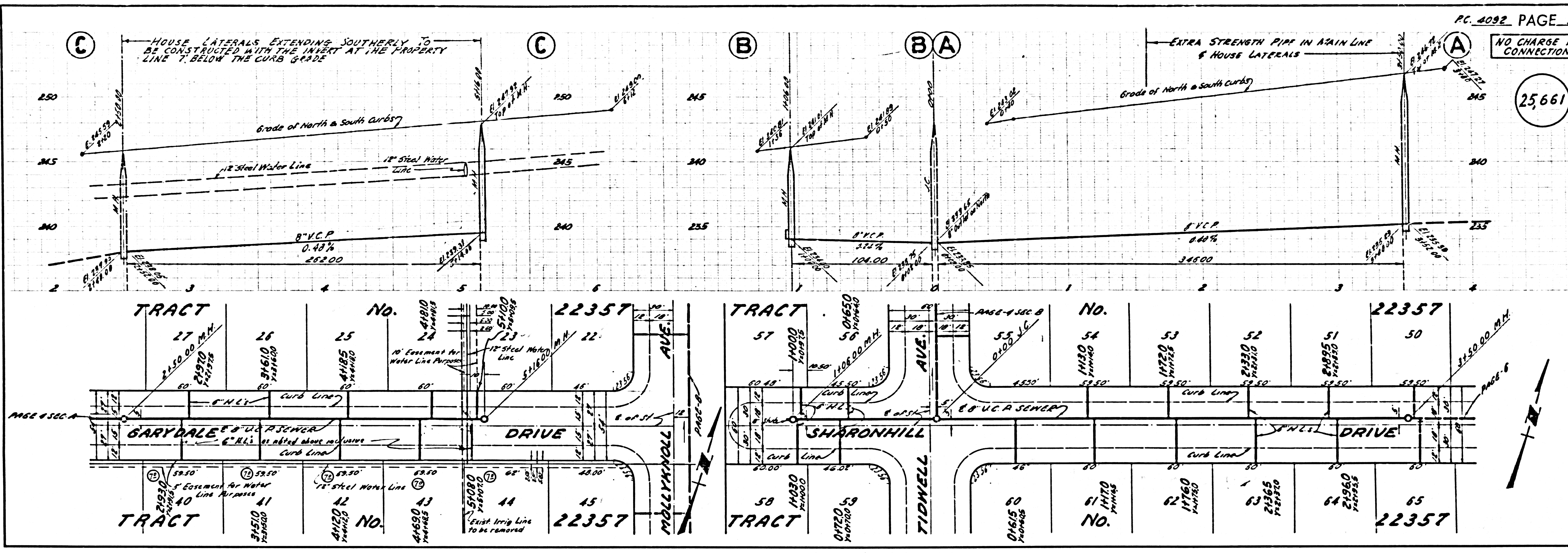


25,659

25,660

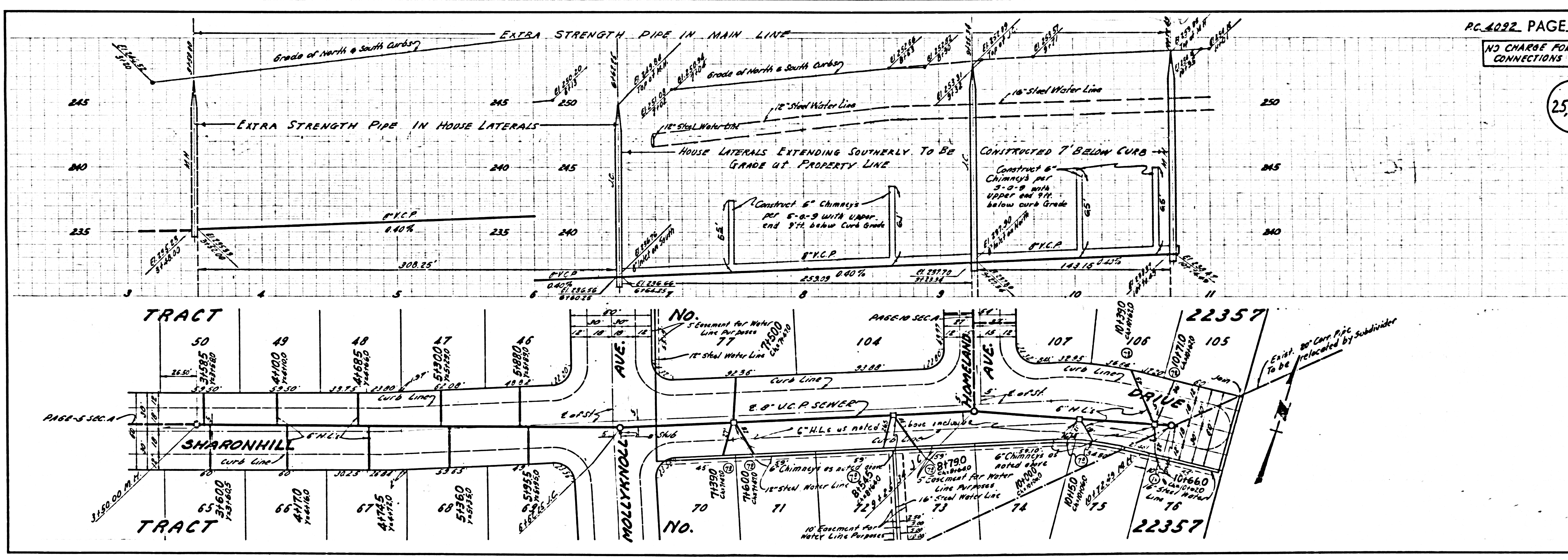
NO CHARGE FOR CONNECTIONS

25661



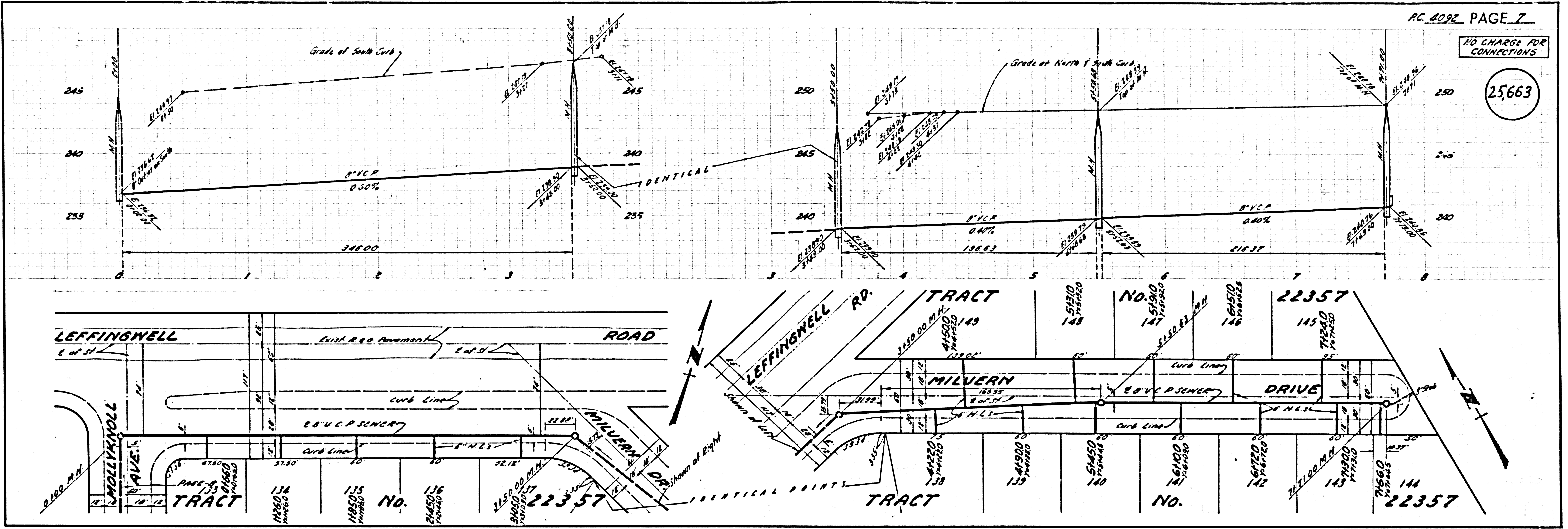
NO CHARGE FOR CONNECTIONS

25662



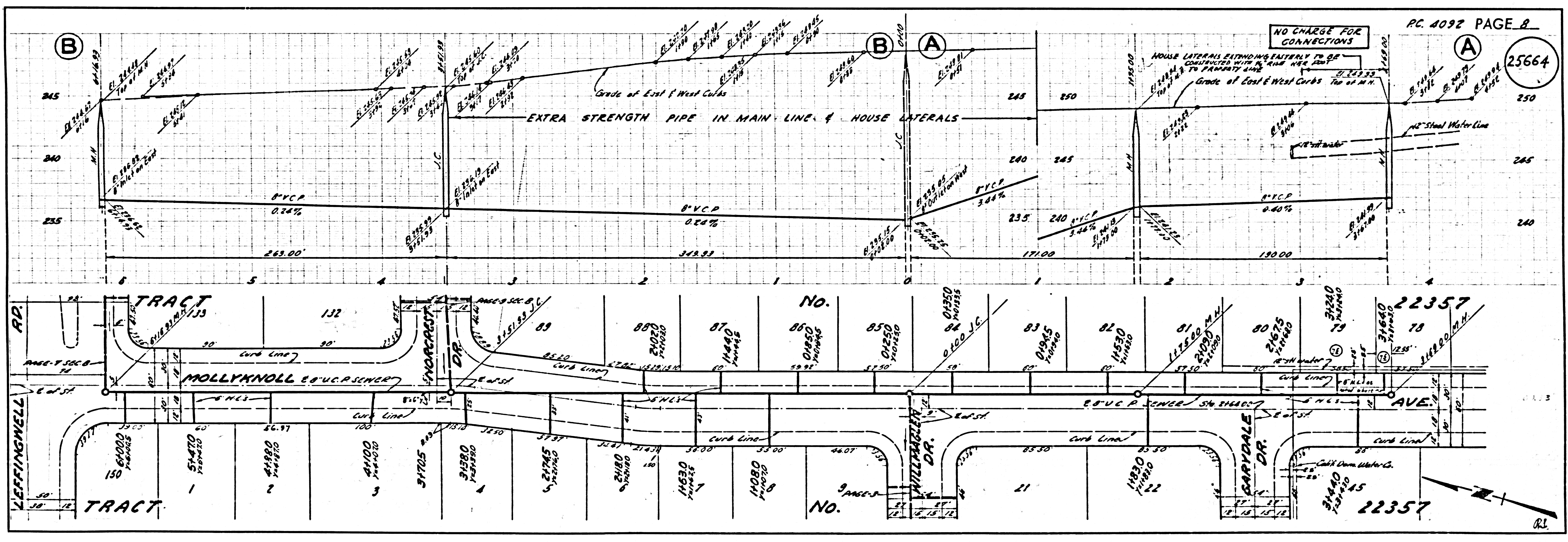
NO CHARGE FOR CONNECTIONS

25663



NO CHARGE FOR CONNECTIONS

25664

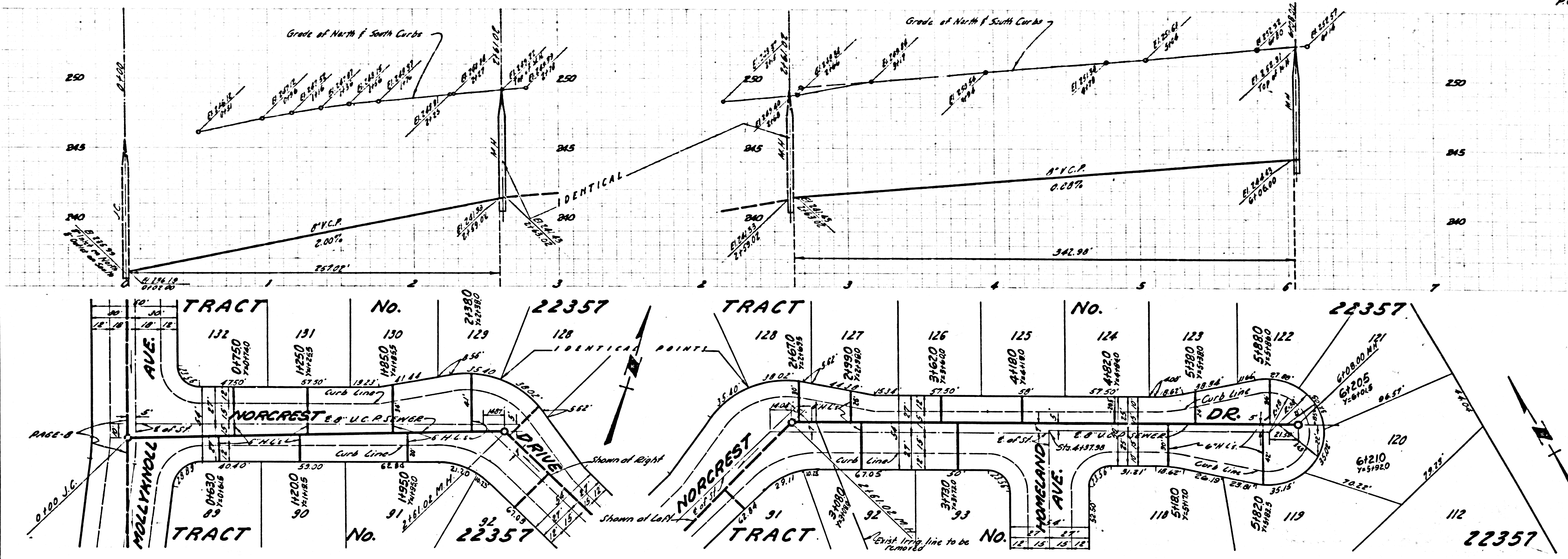


4

CONT. 10

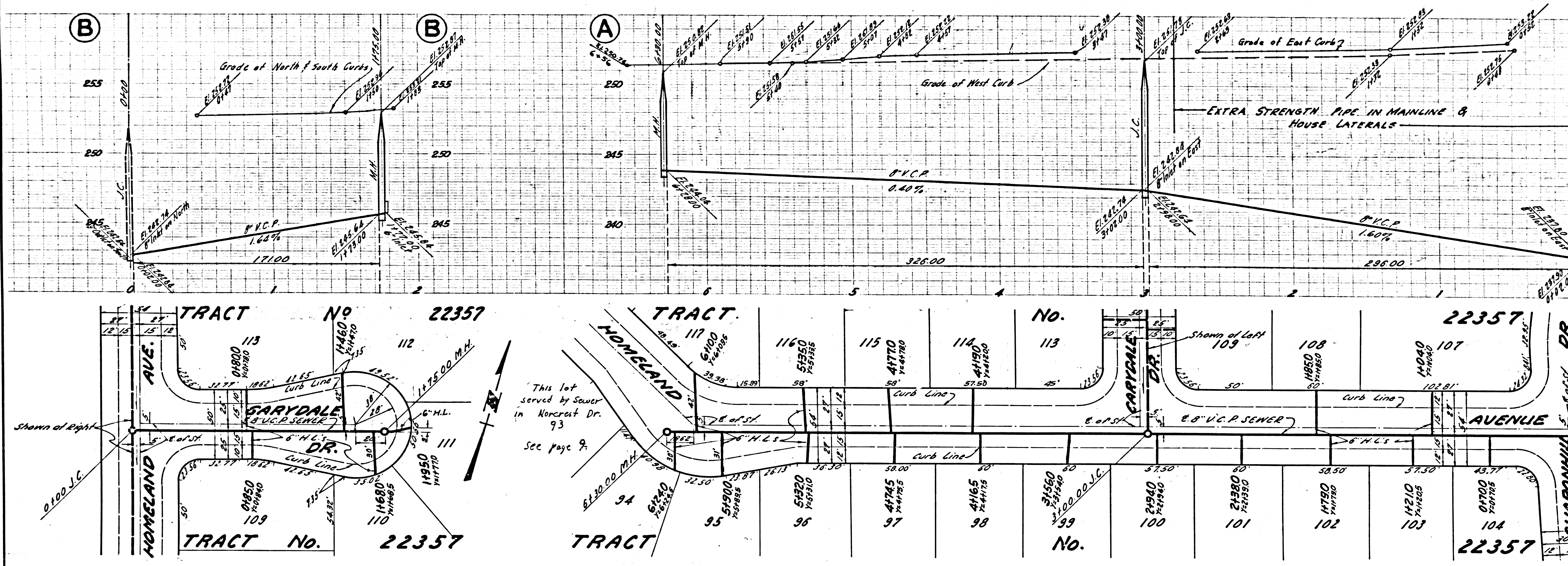
NO CHARGE FOR CONNECTIONS

25,665



NO CHARGE FOR CONNECTIONS

25,666

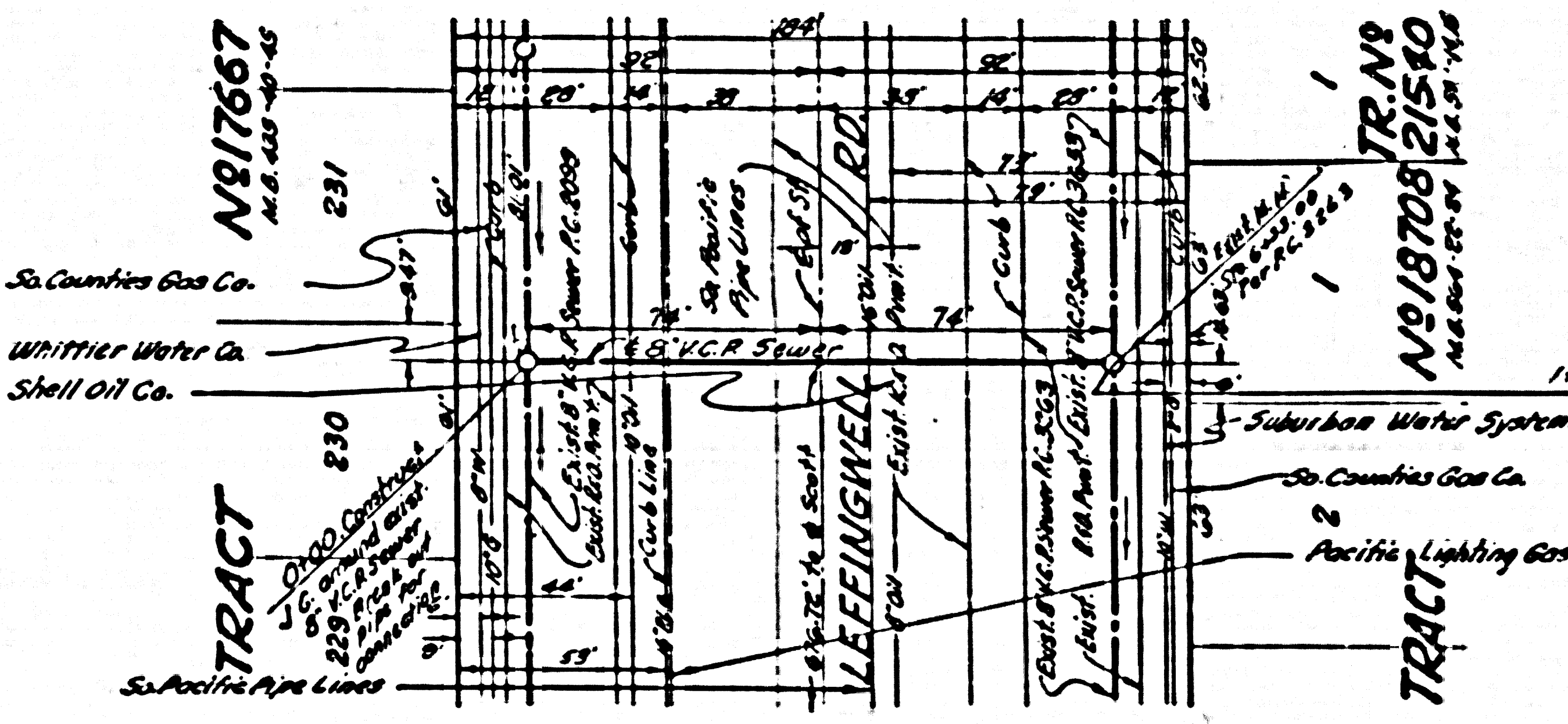
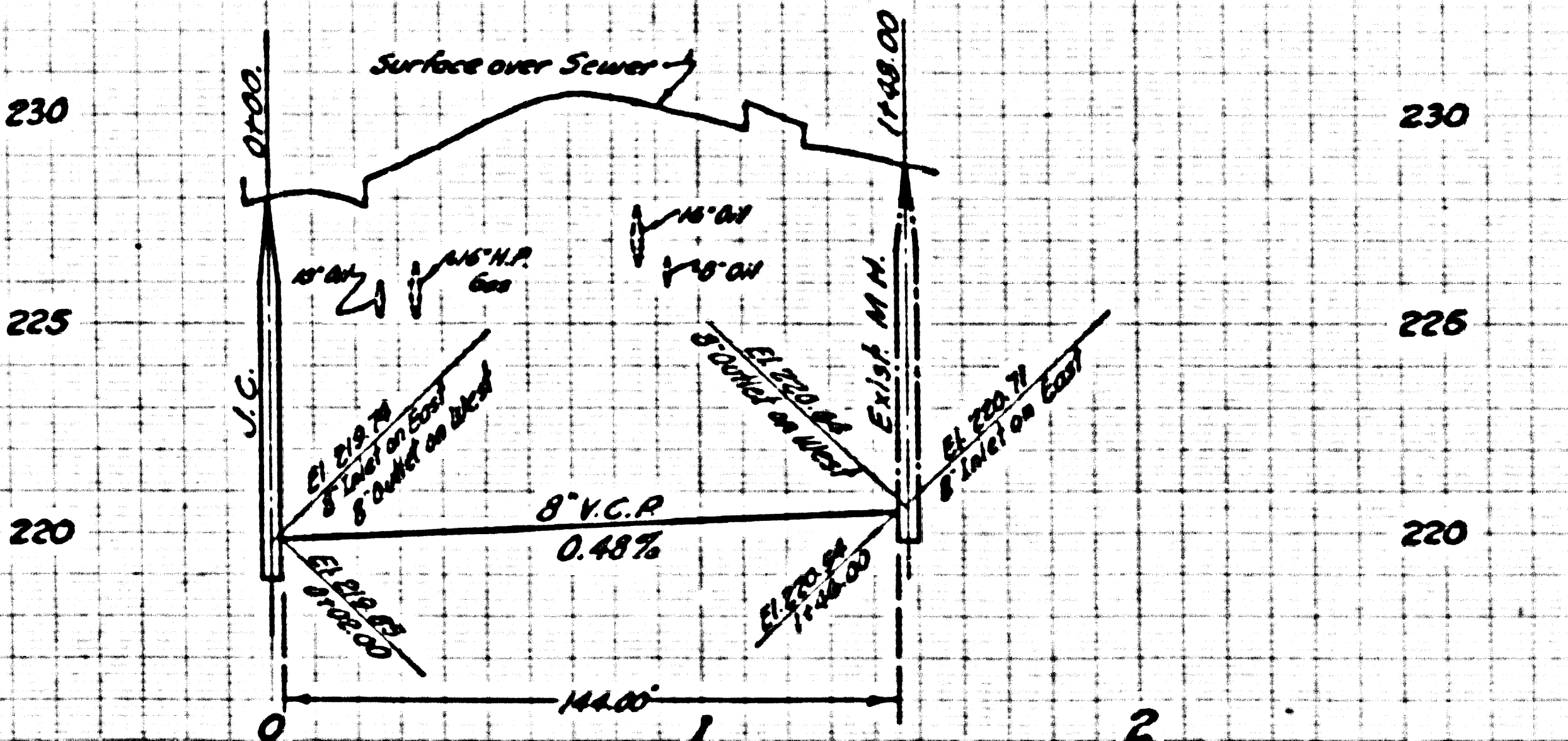


This lot served by Sewer in Norcrest Dr. 93 See page 9.

250675

NO CHARGE FOR CONNECTIONS

25667



NOTE:
Contractor to notify utility companies before starting sewer construction.

