

BENCHMARK:

B.M. AV-47 El. 2670.319, F.B. 1752, Pg. 129
 1 1/2" I.P. & Cut Spk. in Conc. in well, 8" down at int. of
 6TH STREET EAST & AVENUE R

CONNECTION CHARGES
 AS INDICATED

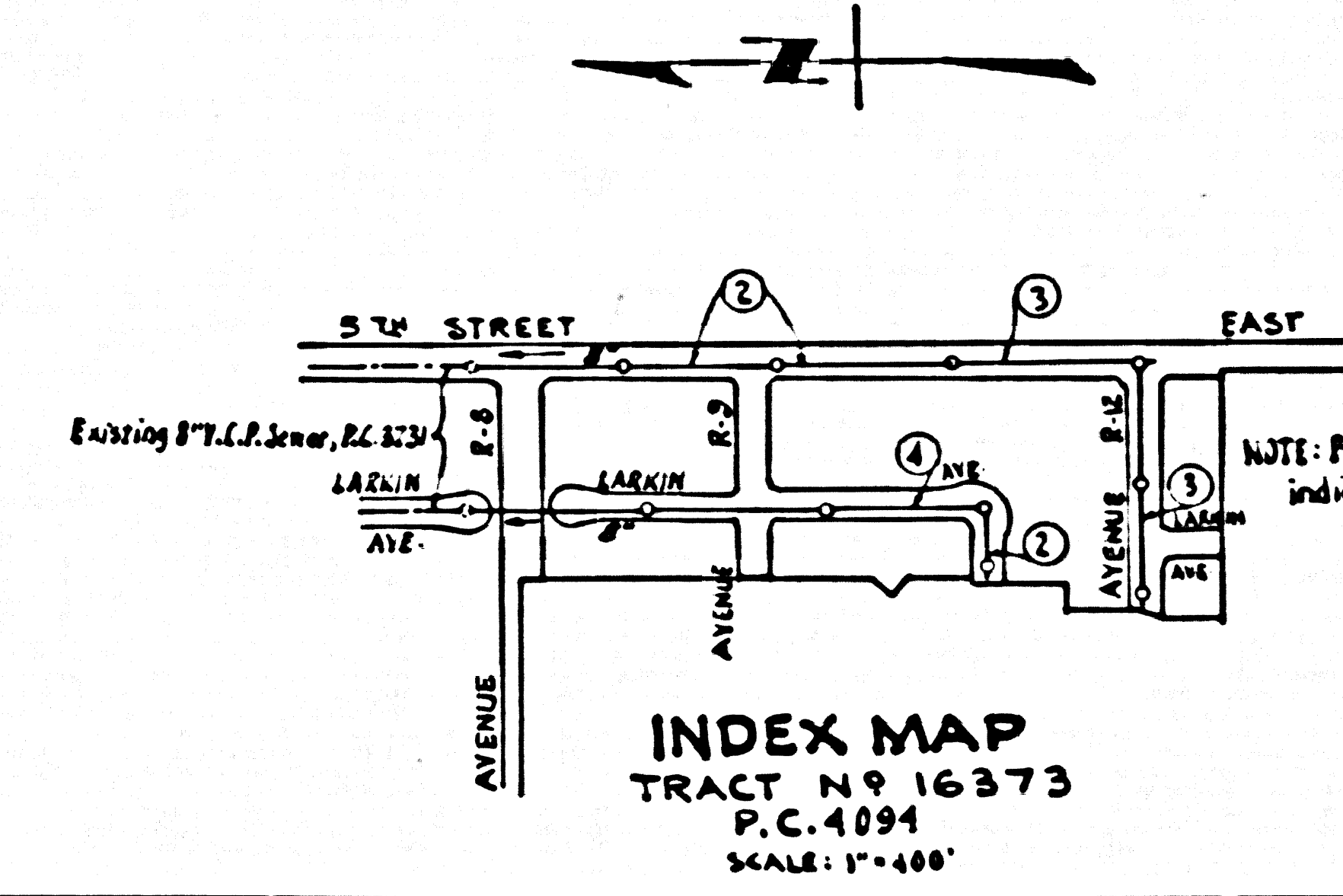
L. Curtis 2-5-57

PALMDALE BLDG. DIST. NO. 8.1

- NOTES:
- PROVIDE STAKES ON THE PROPERTY LINE OR PROPERTY LINES PRODUCED AT RIGHT ANGLES TO THE SEWER LINE AT THE CENTER LINE OF EACH MANHOLE.
 - NO REPRESENTATIVE OF THE COUNTY ENGINEER WILL SURVEY OR LAYOUT ANY PORTION OF THE WORK.
 - THE OWNER OR HIS AUTHORIZED REPRESENTATIVE SHALL FURNISH THE COUNTY ENGINEER WITH GRADE SHEETS AND STATIONING FOR ALL HOUSE LATERALS AND Y BRANCHES AND SHALL PROVIDE STAKES FOR THEM AT THREE PROPER LOCATIONS WITH STATIONING PLAINLY MARKED. ANY CHANGE IN LOCATION SHALL BE REQUESTED IN WRITING BY THE OWNER OR HIS REPRESENTATIVE.
 - NO REVISIONS SHALL BE MADE IN THESE PLANS WITHOUT THE APPROVAL OF THE COUNTY ENGINEER.
 - USE STANDARD MANHOLE FRAMES AND COVERS, S.A. 117.
 - USE STANDARD STRENGTH PIPE.
 - USE CEMENT MORTAR FOR ALL VITRIFIED CLAY PIPE JOINTS.
 - REPAIR ALL TRENCH WITHIN PAVED AREAS TO MEET L.A. COUNTY ROAD DEPT. OR CALIF. STATE HIGHWAY DEPT. REQUIREMENTS IN ACCORDANCE WITH PERMITS.
 - INCASE FOUR FEET OF SEWER AT POINTS OF INTERFERENCE WITH POLES, S.A. 119.
 - HOUSE LATERALS TO BE CONSTRUCTED WITH INVERTS AT PROPERTY LINE 6 FEET BELOW CURB GRADE.
 - ALL STRUCTURES SHALL BE BRICK SEWER STRUCTURES, S.A. 124.
 - FOR ALLOWABLE LEAKAGE TEST USE FORMULA NO. 1, SPECS. SEC. 29.
 - MANHOLE TOPS IN UNIMPROVED RIGHTS-OF-WAY TO BE 4" ABOVE FINISHED GRADE.
 - THE PRIVATE ENGINEER IS TO FURNISH THE HOUSE LATERAL DEPTH AT THE PROPERTY LINE BELOW THE TOP OF CURB ELEVATION FOR EACH HOUSE LATERAL ON THE GRADE SHEET.
 - CALL ALL PIPE JOINTS THAT ARE WITHIN 20 FEET OF ANY PROPERTY LINE OR WITHIN ANY SANITARY SEWER R.I.W. WITH 4" OF CEMENT MORTAR.

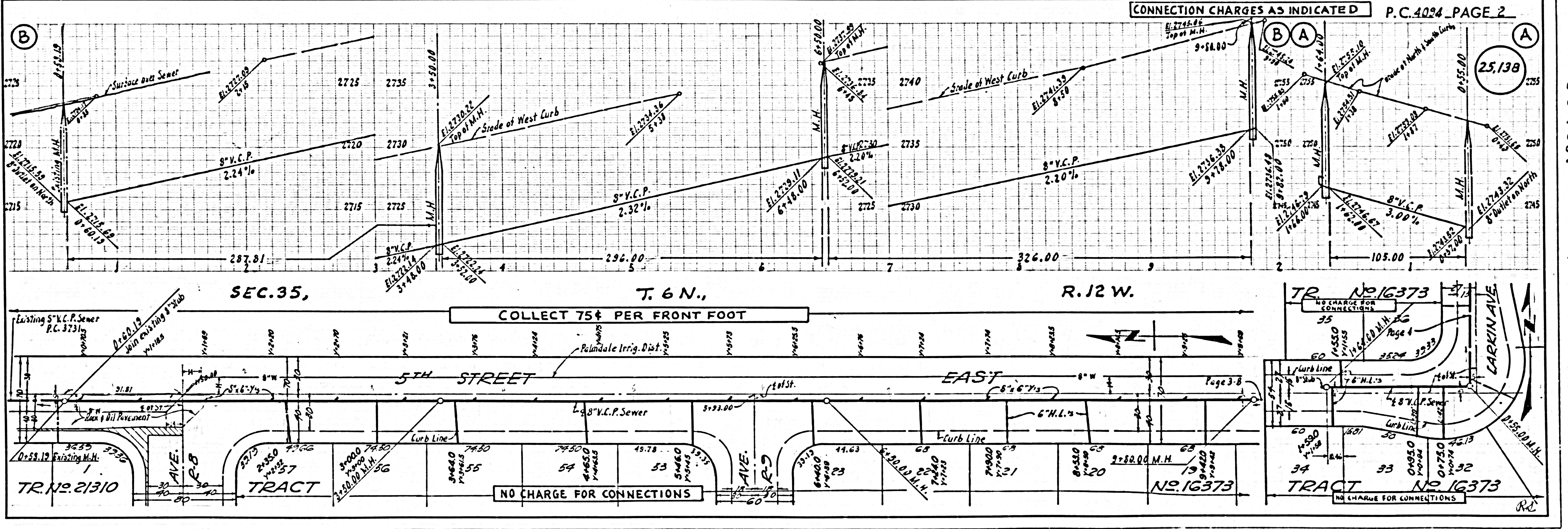
PROFILE ALIGNMENT AND GRADE OF P.C. 4094
 SANITARY SEWERS PAGE 1
 TO BE CONSTRUCTED IN
 TRACT NO. 16373 (25,137)

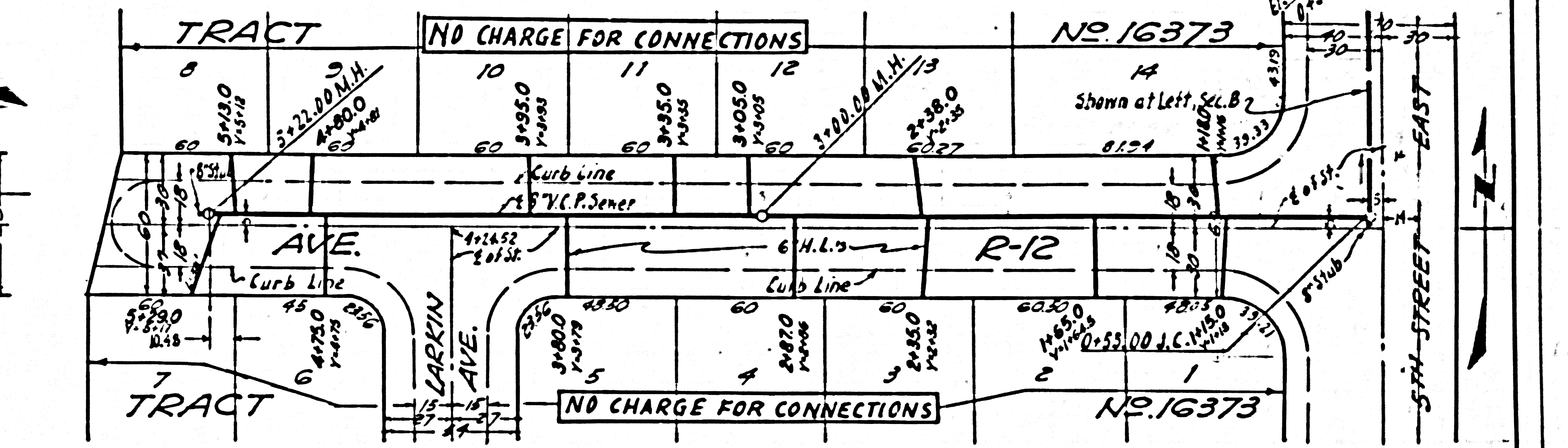
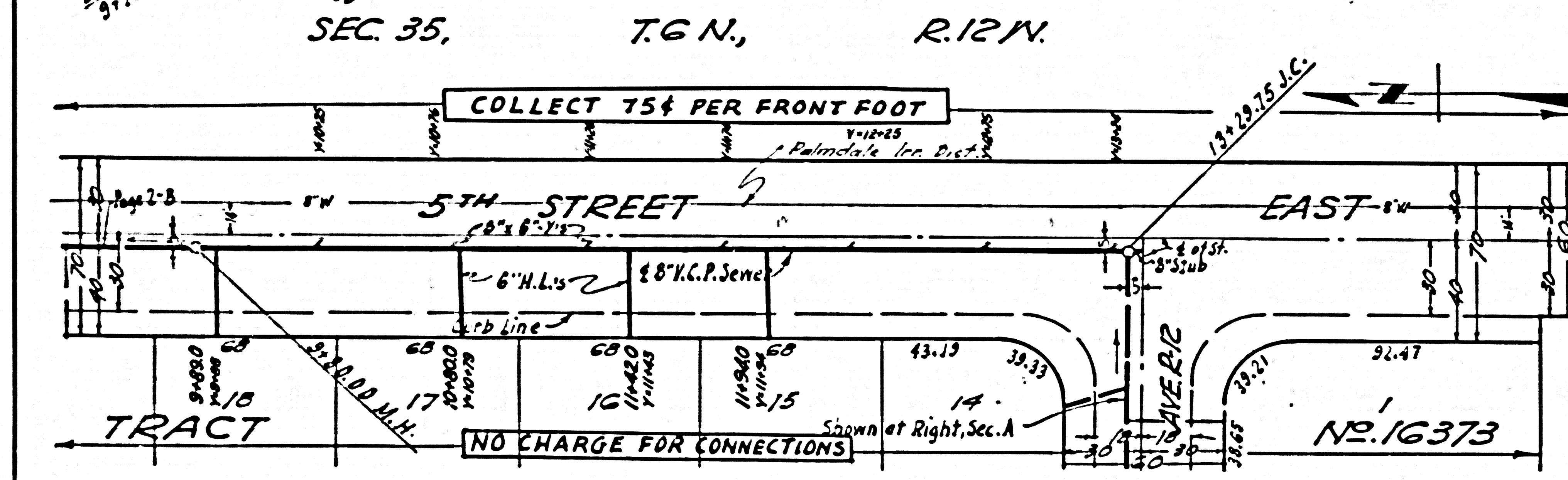
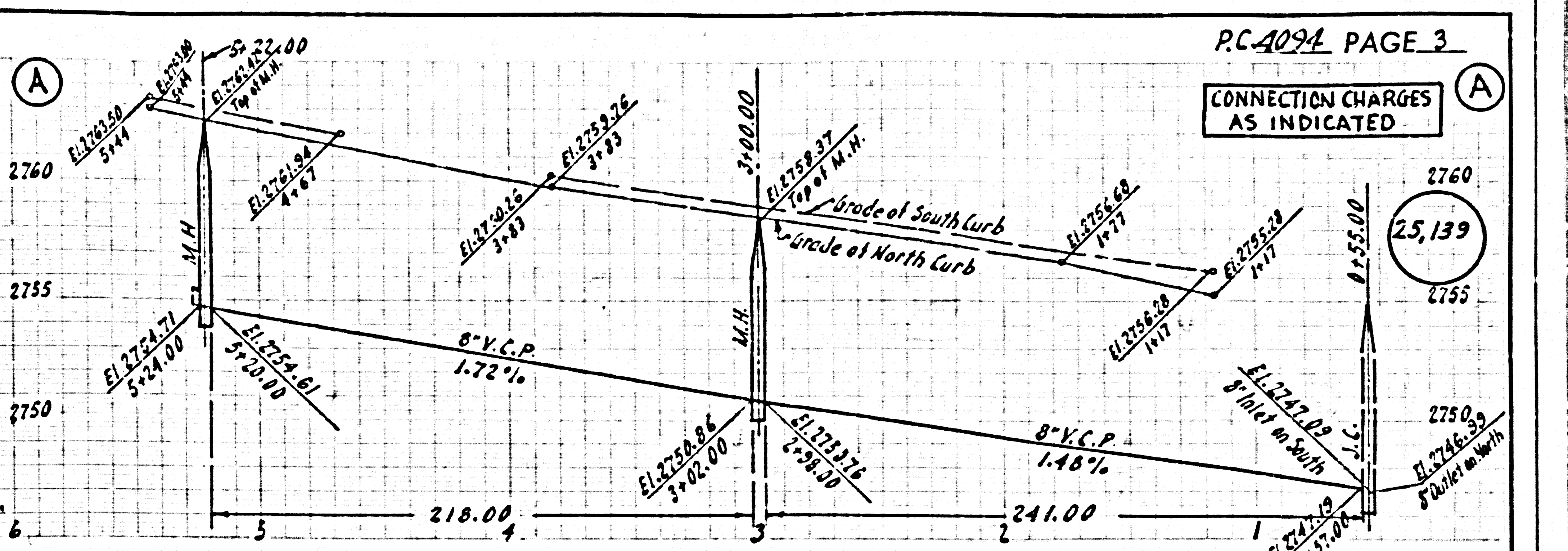
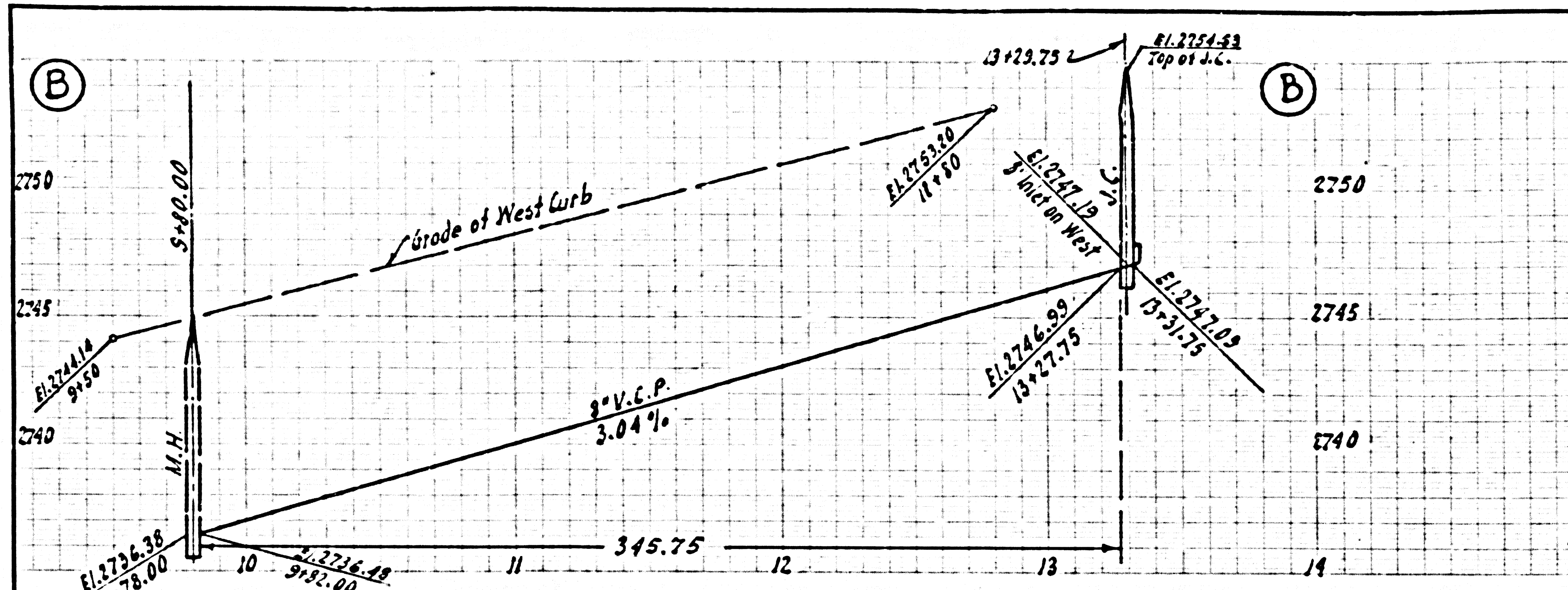
PRIVATE CONTRACT NO. 4094
 W.S. 65
 2 SHEETS, 4 PAGES
 SCALE: 1" = 40'
 JULY, 1956
 PREPARED IN THE OFFICES OF
 ROSENTHAL ENGINEERING COMPANY
 BY *Arthur S. Rosenthal*
 REG. C. E. NO. 2303
 FOR LEGEND SEE PLAN NO. S-A-64



NOTE:
 GRADES TO WHICH THIS IMPROVEMENT IS TO BE CONSTRUCTED ARE SHOWN ON PLANS AND PROFILES. GRADE POINTS FOR TOP OF CURBS, CENTER LINE OF STREETS, OR CENTER LINE OF ALLEYS ARE SHOWN BY CIRCLES ON PROFILES AT ALL POINTS BETWEEN DESIGNATED POINTS THE GRADE SHALL BE ESTABLISHED SO AS TO CONFORM TO A STRAIGHT LINE DRAWN BETWEEN SAID DESIGNATED POINTS.
 ELEVATIONS ARE IN FEET ABOVE U.S.C. & G.S. SEA LEVEL DATUM OF 1929.
 THIS DRAWING AND THE DATA HEREON ARE HEREBY MADE A PART OF THE SPECIFICATIONS.
 WORK SHALL BE CONSTRUCTED ACCORDING TO SPECIFICATIONS ON FILE IN THE OFFICE OF THE COUNTY ENGINEER AND SHALL BE PROSECUTED ONLY IN THE PRESENCE OF THE COUNTY ENGINEER.
 BEFORE WORK CAN BE STARTED, THE CONTRACTOR MUST OBTAIN A PERMIT TO EXCAVATE IN COUNTY STREETS FROM THE L.A. COUNTY ROAD DEPT. THE WORK SHALL BE DONE IN ACCORDANCE WITH THE COUNTY ENGINEER, ROOM 304 MAIN AMERICAN BUILDING, 315 SO BROADWAY SUPPLEMENT TO COVER THE COST OF CONSTRUCTION INSPECTION AND RECORD PLANS.
 APPROVAL OF THIS PLAN BY THE COUNTY OF LOS ANGELES DOES NOT CONSTITUTE A REPRESENTATION AS TO THE ACCURACY OF THE LOCATION OF OR THE EXISTENCE OR NON-EXISTENCE OF ANY UNDERGROUND UTILITY PIPE OR STRUCTURE WITHIN THE LIMITS OF THIS PROJECT THIS NOTE APPLIES TO ALL PAGES.
 IF WORK IS TO BE DONE IN A STATE HIGHWAY, A PERMIT MUST BE OBTAINED FROM THE STATE OF CALIFORNIA, DIVISION OF HIGHWAYS, 120 SOUTH SPRING STREET.

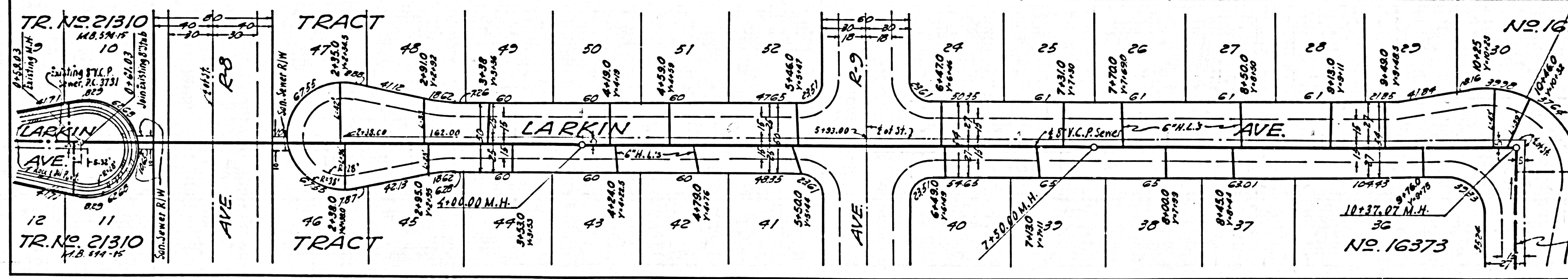
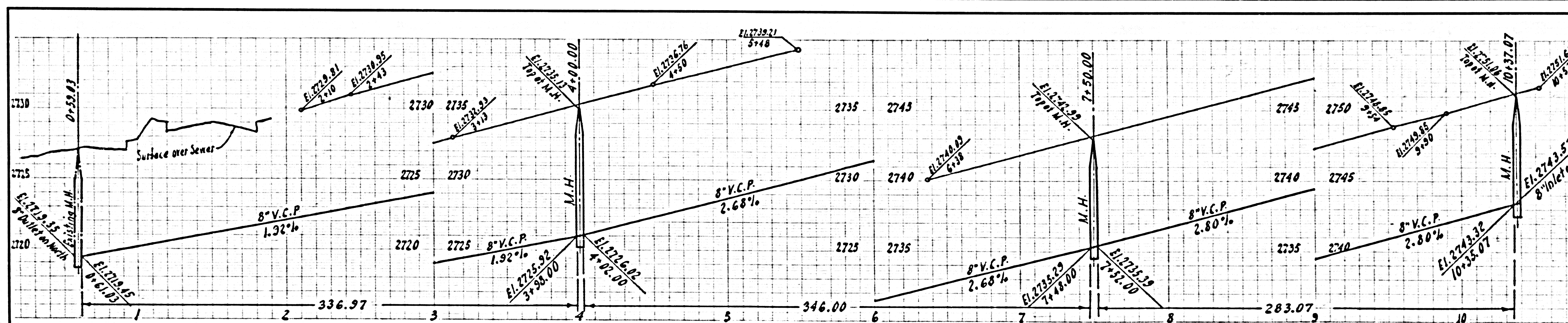
COUNTY OF LOS ANGELES, CALIFORNIA
 APPROVED, JOHN A. LAMBE, COUNTY ENGINEER
 APPROVED, A. M. BAWN, CHIEF ENGINEER
 CO. PLAN DIST. NO. 8.1
 BY *A.P. Cecil* SANITATION ENGINEER
 BY *L. Curtis* OFFICE ENGINEER
 CHECKED BY *R.K. Oiler 2-6-57*
 OFFICE OF COUNTY ENGINEER, 800 C. E. NO. 9406





P.C. 4094 PAGE 3
CONNECTION CHARGES AS INDICATED

25,139



P.C. 4094 PAGE 4
NO CHARGE FOR CONNECTIONS

25,140

Rel.