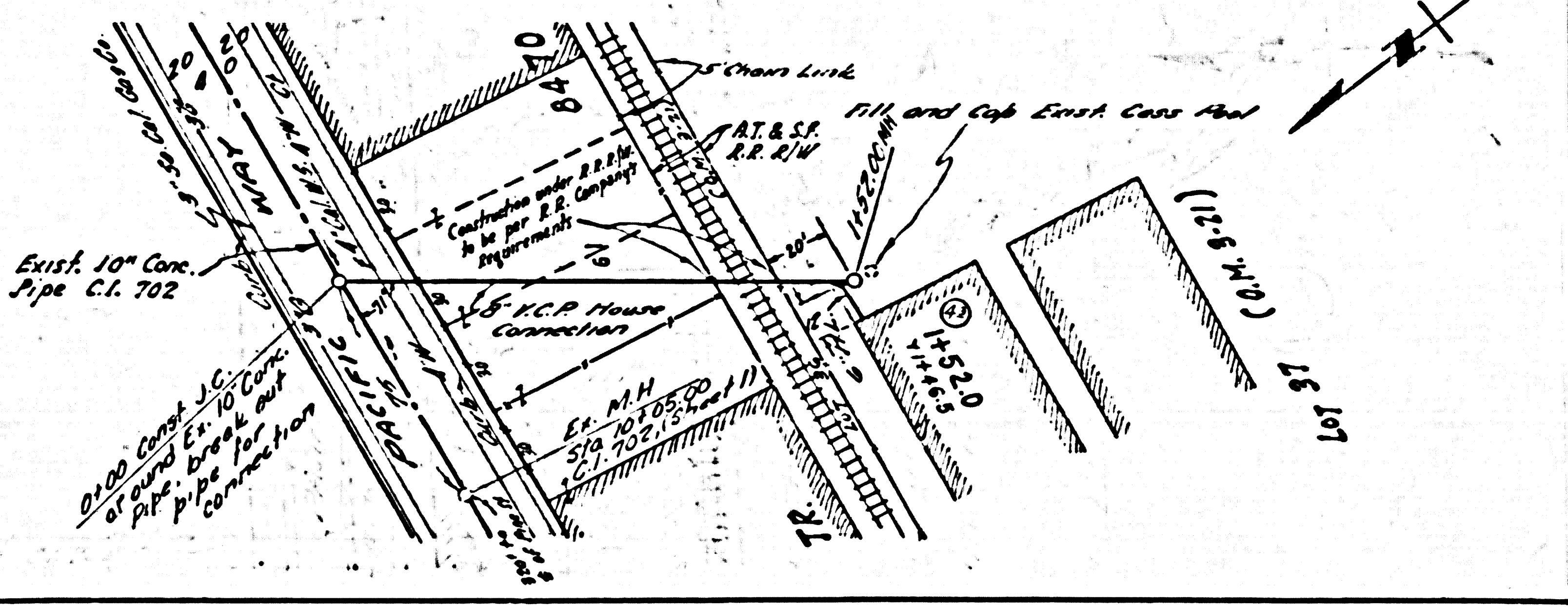


NOTE: ISSUE NO PERMITS
BETWEEN STA. 0+00
AND STA. 1+33

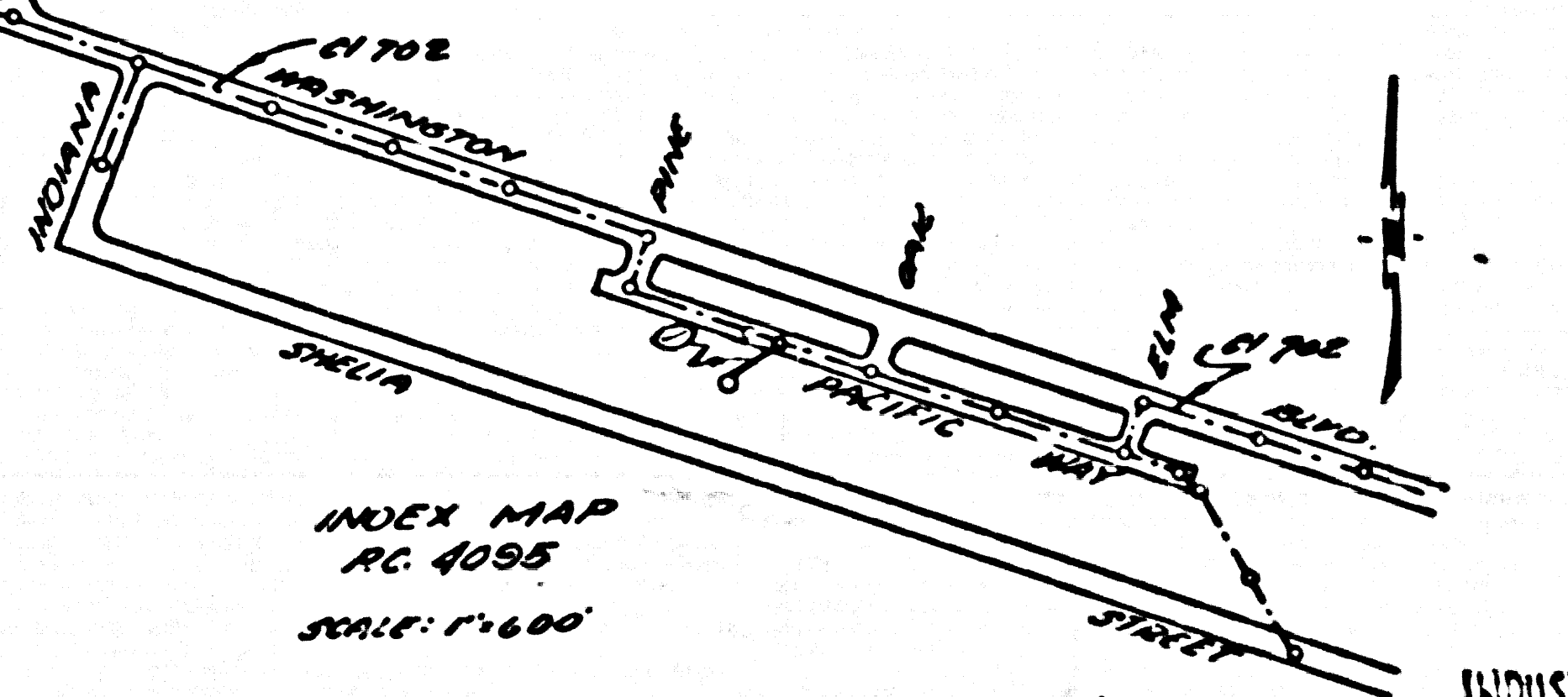


EAST LOS ANGELES BLDG. DIST. NO. 6

- NOTES
- PROVIDE STAKES ON THE PROPERTY LINE OR PROPERTY LINES PRODUCED AT RIGHT ANGLES TO THE SEWER LINE AT THE CENTER LINE OF EACH MANHOLE.
 - NO REPRESENTATIVE OF THE COUNTY ENGINEER WILL SURVEY OR LAYOUT ANY PORTION OF THE WORK.
 - THE OWNER OR HIS AUTHORIZED REPRESENTATIVE SHALL FURNISH THE COUNTY ENGINEER WITH GRADE SHEETS AND STATIONING PLANS FOR ALL HOUSE LATERALS AND Y BRANCHES AND SHALL PROVIDE STAKES FOR THESE AT THEIR PROPER LOCATIONS WITH STATIONING PLANS MARKED. ANY CHANGE IN LOCATION SHALL BE REQUESTED IN WRITING BY THE OWNER OR HIS REPRESENTATIVE. NO DIVISIONS SHALL BE MADE IN THESE PLANS WITHOUT THE APPROVAL OF THE COUNTY ENGINEER.
 - USE STANDARD MANHOLE FRAMES AND COVERS, S.A. 117, EXCEPT AS NOTED.
 - USE CEMENT MORTAR FOR ALL VITRIFIED CLAY JOINTS.
 - RESURFACE ALL TRENCH WITHIN PAVED AREA TO MEET L. A. COUNTY ROAD DEPT., OR CALIF. STATE HIGHWAY DEPT. REQUIREMENTS IN ACCORDANCE WITH PERMITS.
 - ENCASE FOUR FEET OF SEWER AT POINTS OF INTERFERENCE WITH POLES, S.A. 119.
 - HOUSE LATERALS TO BE CONSTRUCTED WITHIN UNPAVED AREAS TO PROPERTY LINE. SET-BACKS TO BE SHOWN BY DASHED LINES.
 - ALL STRUCTURES SHALL BE BRICK SEWER STRUCTURES, S.A. 104, EXCEPT AS NOTED.
 - FOR ALLOWABLE LEAKAGE TEST USE FORMULA NO. 1, EPIC'S, SEC. 31.
 - MANHOLE POPE IN UNIMPROVED RIGHTS-OF-WAY TO BE 6" ABOVE FINISHED GRADE.

B.M. Elev 160.95 C.I. 702
Pacific Hwy 300' E. of Pine St.
W. limit of M.H.
NOTE: Record invert elev.
as shown on said C.I. used
as bench elev.

NO CHARGE FOR CONNECTIONS
-Sx Oida 7-14-56-



INDEX MAP
RC 4095
SCALE: 1\"/>

INDEX TABLE	
SHEETS	PAGES
1	1

PROFILE ALIGNMENT AND GRADE OF
SANITARY SEWERS
TO BE CONSTRUCTED FOR
NORRIS ENAMELING CO.
(PRIVATE SEWERS)
ALL ON PROPERTY OF THE A.T. & S.F. R.R. CO.

PRIVATE CONTRACT NO. 4095

W.S. 7-5
1 SHEET, 1 PAGE
SCALE: 1\"/>

PREPARED IN THE OFFICES OF
M.W. FINLEY CO.
By Leon W. Moran
REG. C. E. NO. 7157

FOR LEGEND SEE PLAN NO. S-A-64

NOTES

GRANTS TO WHICH THIS IMPROVEMENT IS TO BE CONSTRUCTED ARE SHOWN ON PLANS AND PROFILES. GRADE POINTS FOR TOP OF CURBS, CENTER LINE OF STREETS, OR CENTER LINE OF ALLEYS ARE SHOWN BY CIRCLES ON PROFILES AT ALL POINTS BETWEEN DESIGNATED POINTS THE GRADE SHALL BE ESTABLISHED SO AS TO CORRESPOND TO A STRAIGHT LINE DRAWN BETWEEN SAID DESIGNATED POINTS.

REVISIONS AND IN SET ABOVE IS CORRECTED TO BE A PART OF THE SPECIFICATIONS.

WORK SHALL BE CONSTRUCTED ACCORDING TO SPECIFICATIONS ON FILE IN THE OFFICE OF THE COUNTY ENGINEER AND SHALL BE INSPECTED ONLY IN THE PRESENCE OF THE COUNTY ENGINEER.

WHEN WORK CAN BE STARTED THE CONTRACTOR MUST OBTAIN A PERMIT TO EXCAVATE IN COUNTY STREETS FROM THE L. A. COUNTY ROAD DEPT. THE SET-BACKS AND MARKS WITH THE COUNTY ENGINEER, ROOM 324 MAIN AMERICAN BUILDING 324 SO. BROADWAY SUFFICIENT TO COVER THE COST OF CONSTRUCTION INSPECTION AND RECORD PLANS.

APPROVAL OF THIS PLAN BY THE COUNTY OF LOS ANGELES DOES NOT CONSTITUTE A REPRESENTATION AS TO THE ACCURACY OF THE LOCATION OF OR THE EXISTENCE OR NON-EXISTENCE OF ANY UNDERGROUND UTILITY PIPES OR STRUCTURE WITHIN THE LIMITS OF THIS PROJECT THIS NOTE APPLIES TO ALL PAGES.

IF WORK IS TO BE DONE IN A STATE HIGHWAY, A PERMIT MUST BE OBTAINED FROM THE STATE OF CALIFORNIA, DIVISION OF HIGHWAYS, 120 SOUTH SPRING STREET.

COUNTY OF LOS ANGELES, CALIFORNIA

APPROVED, JOHN A. LAMBE, COUNTY ENGINEER

APPROVED, A. M. RAWN, CHIEF ENGINEER

By A. H. Collins
SANITATION ENGINEER

By J. J. O'Sullivan
OFFICE ENGINEER

CHECKED BY Sx Oida 7-14-56
OFFICE OF COUNTY ENGINEER, REG. C. E. NO. 9406

INDUSTRIAL WASTE DIVISION
APPROVED BY J. J. O'Sullivan

P.C. 4095 1