

# PUENTE BLDG. DIST. NO. 2

- NOTE:**  
PROVIDE STAKES ON THE PROPERTY LINE OR PROPERTY LINES PRODUCED AT RIGHT ANGLES TO THE SEWER LINE AT THE CENTER LINE OF EACH MANHOLE.  
NO REPRESENTATIVE OF THE COUNTY ENGINEER WILL SURVEY OR LAYOUT ANY PORTION OF THE WORK.  
THE OWNER OR HIS AUTHORIZED REPRESENTATIVE SHALL FURNISH THE COUNTY ENGINEER WITH GRADY SHEETS AND STATIONING FOR ALL HOUSE LATERALS AND Y BRANCHES AND SHALL PROVIDE STAKES FOR THEM AT THEIR PROPER LOCATIONS WITH STATIONING PLANNED MARKERS. ANY CHANGE IN LOCATION SHALL BE REQUESTED IN WRITING BY THE OWNER OR HIS REPRESENTATIVE.  
NO REVISIONS SHALL BE MADE IN THESE PLANS WITHOUT THE APPROVAL OF THE COUNTY ENGINEER.
1. USE STANDARD MANHOLE FRAMES AND COVERS, S.A.-117, EXCEPT AS NOTED.
  2. USE STANDARD STRENGTH PIPE EXCEPT AS NOTED.
  3. USE CEMENT MORTAR FOR ALL VITRIFIED CLAY PIPE JOINTS.
  4. RESURFACE ALL TRENCH WITHIN PAVED AREA TO MEET L. A. COUNTY ROAD DEPT., OR CALIF. STATE HIGHWAY DEPT. REQUIREMENTS IN ACCORDANCE WITH PERMITS.
  5. BRIDGE FOUR FEET OF SEWER AT POINTS OF INTERFERENCE WITH POLES, S.A.-119.
  6. HOUSE LATERALS TO BE CONSTRUCTED WITH INVERTS AT PROPERTY LINE,  $6 \frac{1}{2}$  FEET BELOW CURB GRADE EXCEPT AS NOTED.
  7. ALL STRUCTURES SHALL BE BRICK SEWER STRUCTURES, S.A.-104, EXCEPT AS NOTED.
  8. FOR ALLOWABLE LEAKAGE TEST USE FORMULA NO. 1, S.P.C.S., SEC. II.
  9. Private Engineer to furnish house lateral depth at property line below top of curb, Grade elevations for each house lateral on the grade sheet.

TO BE CONSTRUCTED IN  
**TRACT No 23064**

**PRIVATE CONTRACT NO. 4105**  
W.S. 46

1 SHEETS, 2 PAGES  
SCALE:  $1" = 60'$  JULY, 1956

PREPARED IN THE OFFICES OF  
**JOHN S. GREGORY CO.**

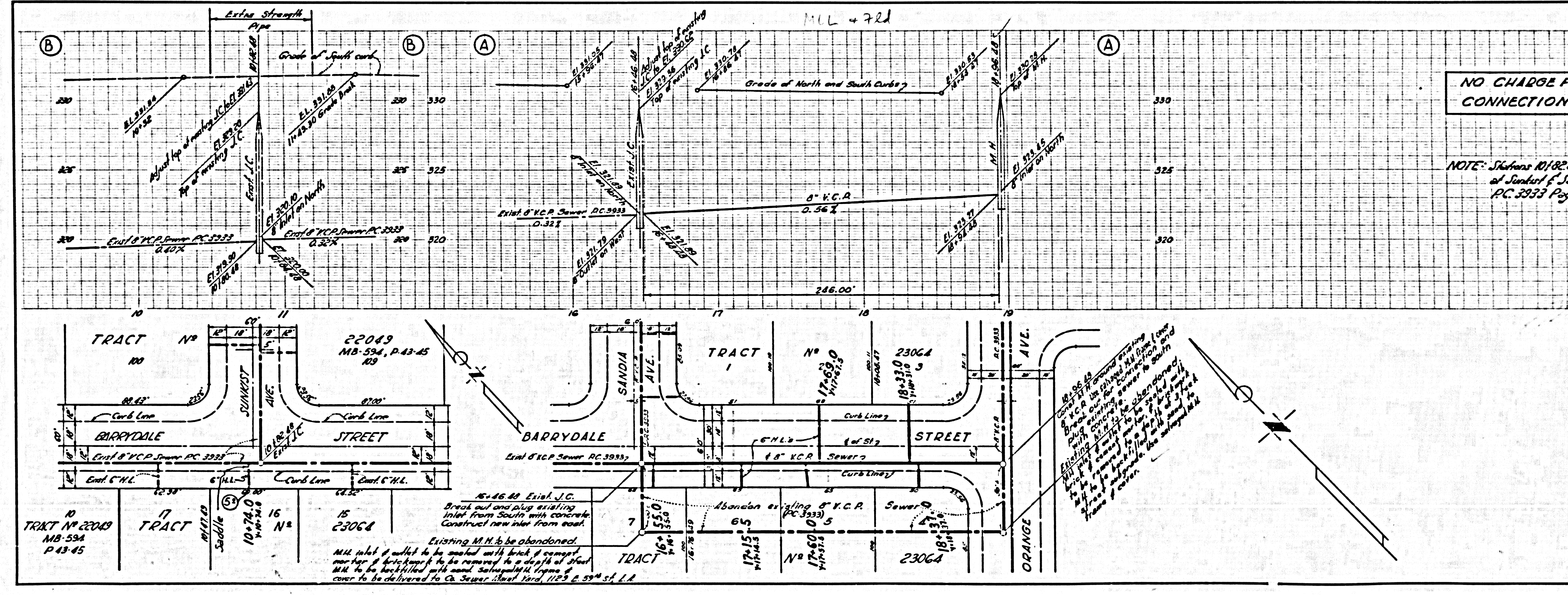
BY *John S. Gregory*  
C.E. NO. 2351  
FOR LEGEND SEE PLAN NO. S-A-64

**NO CHARGE FOR CONNECTIONS**

Note: Lots 8 thru 15 inclusive, and lot 17 served by existing sewers constructed under PC 3333

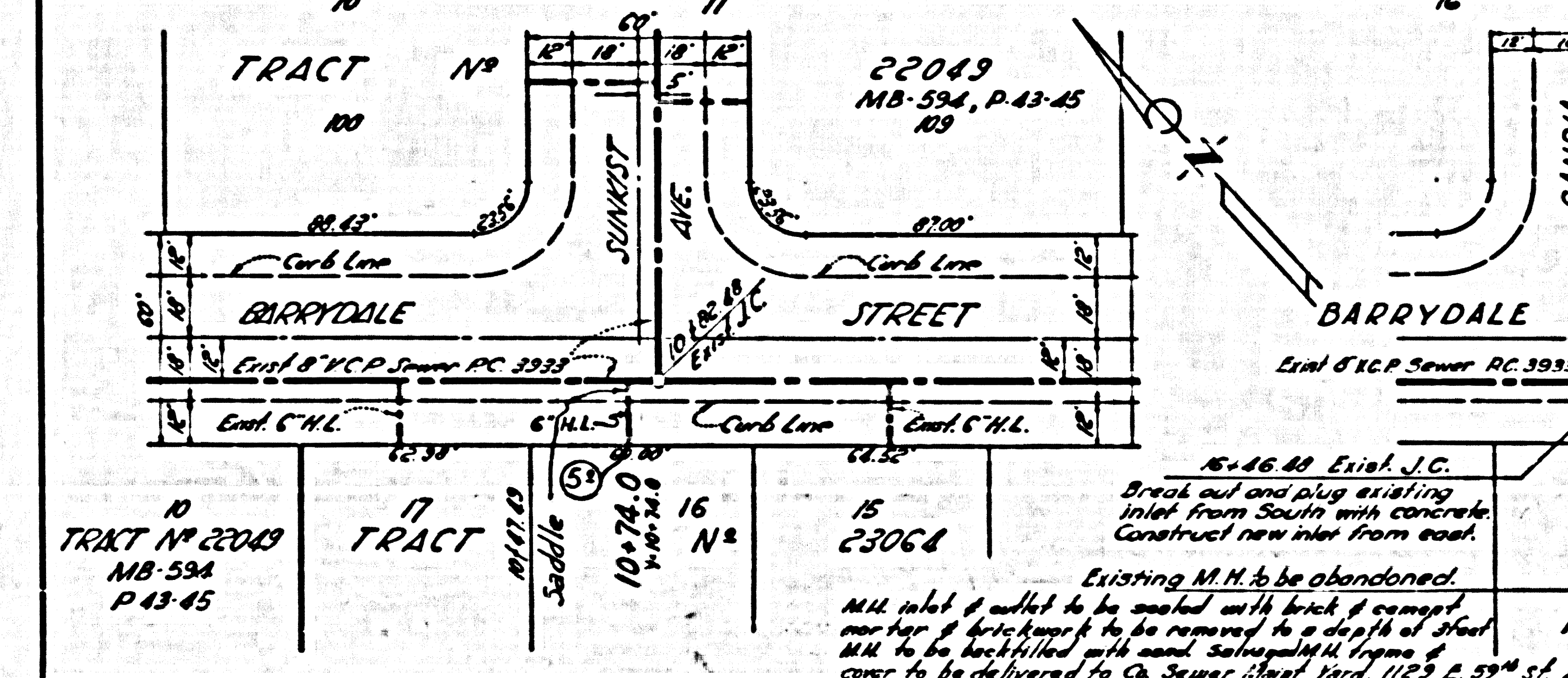
**NOTE:**  
GRADES TO WHICH THIS IMPROVEMENT IS TO BE CONSTRUCTED ARE SHOWN ON PLANS AND PROFILE. GRADE POINTS FOR TOP OF CURB, CENTER LINE OF STREETS, OR CENTER LINE OF ALLEYS ARE SHOWN BY CIRCLES ON PROFILES AT ALL POINTS BETWEEN INFORMATION POINTS. THE GRADE SHALL BE ESTABLISHED SO AS TO CONFORM TO A STRAIGHT LINE BETWEEN SAID INFORMATION POINTS.  
ELEVATIONS ARE IN FEET ABOVE M.S.L. AND G.S. DATUM OF 1929.  
THIS DRAWING AND THE DATA HEREON ARE HEREBY MADE A PART OF THE SPECIFICATIONS.  
WORK SHALL BE CONSTRUCTED ACCORDING TO SPECIFICATIONS ON FILE IN THE OFFICE OF THE COUNTY ENGINEER AND SHALL BE PROSECUTED ONLY IN THE PRESENCE OF THE COUNTY ENGINEER.  
WORKER WORK CAN BE STARTED. THE CONTRACTOR MUST OBTAIN A PERMIT TO EXCAVATE IN COUNTY ESTATE FROM THE L. A. COUNTY ROAD DEPT., 150 W. 5TH ST., AND MAKE A DEPOSIT WITH THE COUNTY ENGINEER, ROOM 204 PAM AMERICAN BUILDING, 310 SO. BRADSHAW ST., TO COVER THE COST OF CONSTRUCTION INSPECTION AND RECORD PLANS.  
APPROVAL OF THIS PLAN BY THE COUNTY OF LOS ANGELES DOES NOT CONSTITUTE A REPRESENTATION AS TO THE ACCURACY OR THE LOCATION OR OF THE EXISTENCE OR NON-EXISTENCE OF ANY UNDERGROUND UTILITY PIPE, OR STRUCTURE WITHIN THE LIMITS OF THIS PROJECT. THIS NOTE APPLIES TO ALL PAGES.  
IF WORK IS TO BE DONE IN A STATE HIGHWAY, A PERMIT MUST BE OBTAINED FROM THE STATE OF CALIFORNIA, DIVISION OF HIGHWAYS, 120 NORTH BRIDGE STREET.

COUNTY OF LOS ANGELES, CALIFORNIA  
APPROVED, JOHN A. LAMBE, COUNTY ENGINEER  
APPROVED, A. M. BAWN, CHIEF ENGINEER  
BY *J. P. Collins* SANITATION ENGINEER BY *A. Post* CIVIL ENGINEER  
CHECKED BY *W. D. Dade* 5-17-56  
OFFICE OF COUNTY ENGINEER, 800 C. E. NO. 2346



**NO CHARGE FOR CONNECTIONS**

NOTE: Stations 101, 82, 88, 61, 61, 68, 88 of existing I.C.'s at Sunset & Sandia Avenues, as shown on PC 3333 Page 6, taken as basis of stationing.



16+46.80 Exis. I.C. Break out and plug existing inlet from South with concrete. Construct new inlet from road.  
Existing M.M. to be abandoned. M.M. inlet at outlet to be connected with brick pipe, 18" diameter & to be removed to a depth of about 10' to be backfilled with sand. Subsequent M.M. pipe to cover to be delivered to Co. Sewer Dept. Yard, 1123 P. 59th St. L.A.

P.C. 4105

24,748

**NO CHARGE FOR CONNECTIONS**

24,749

P.C. 4105