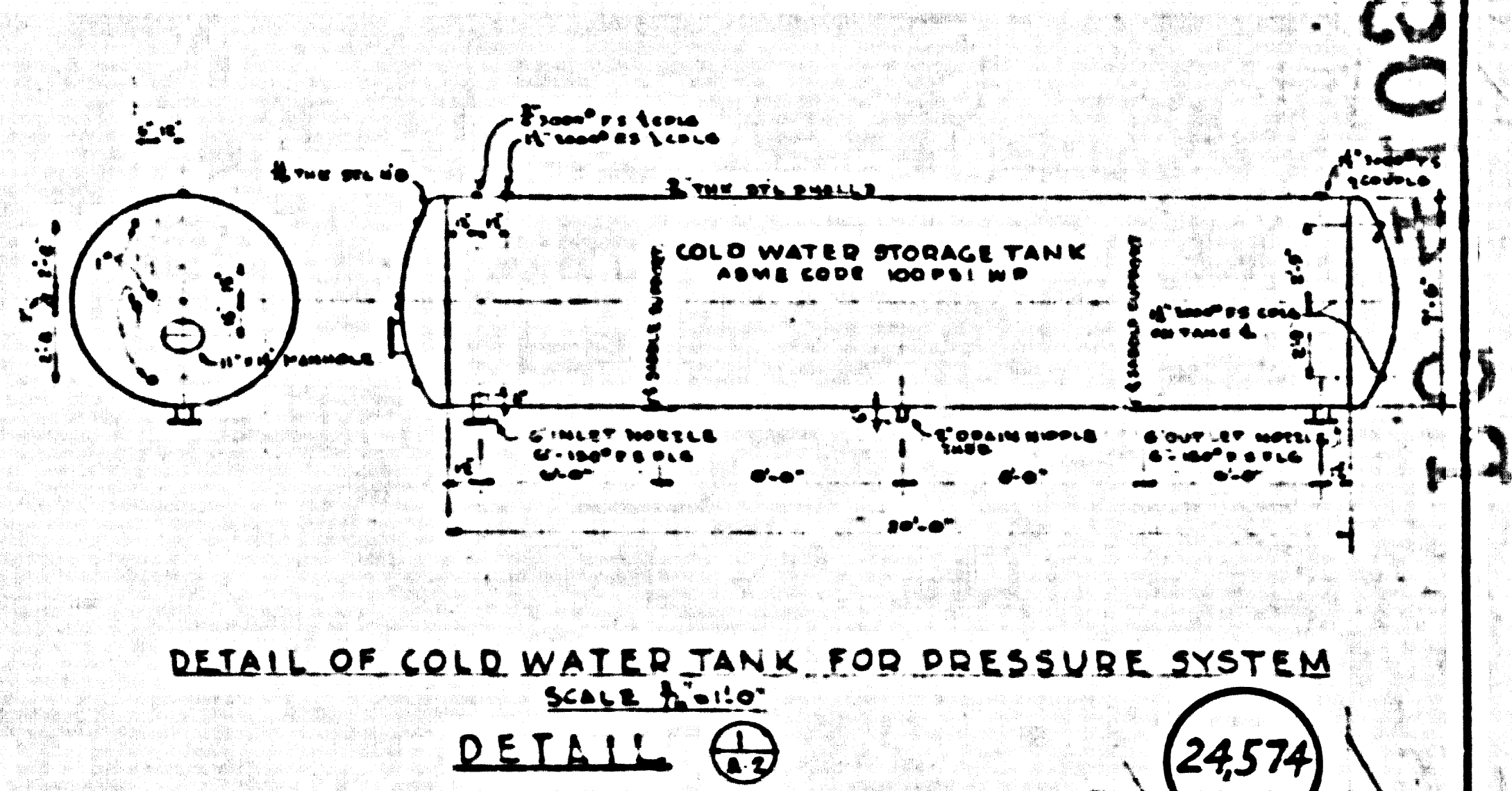
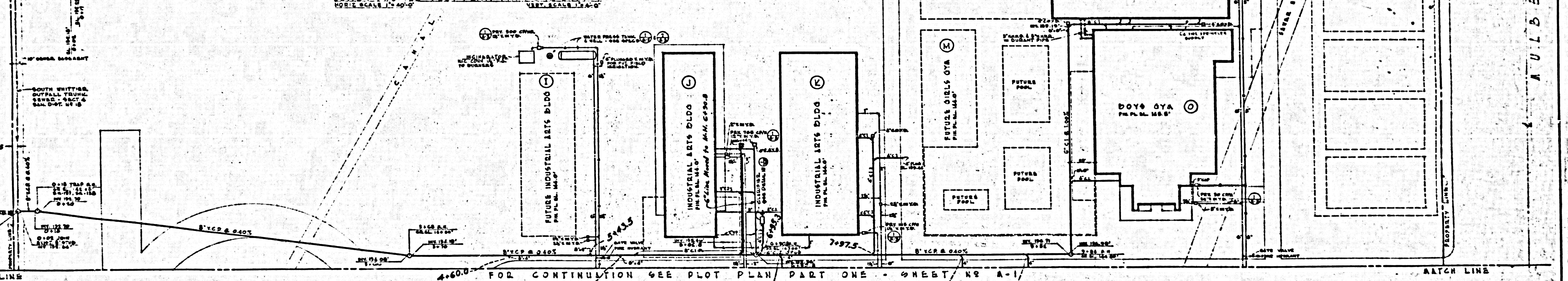
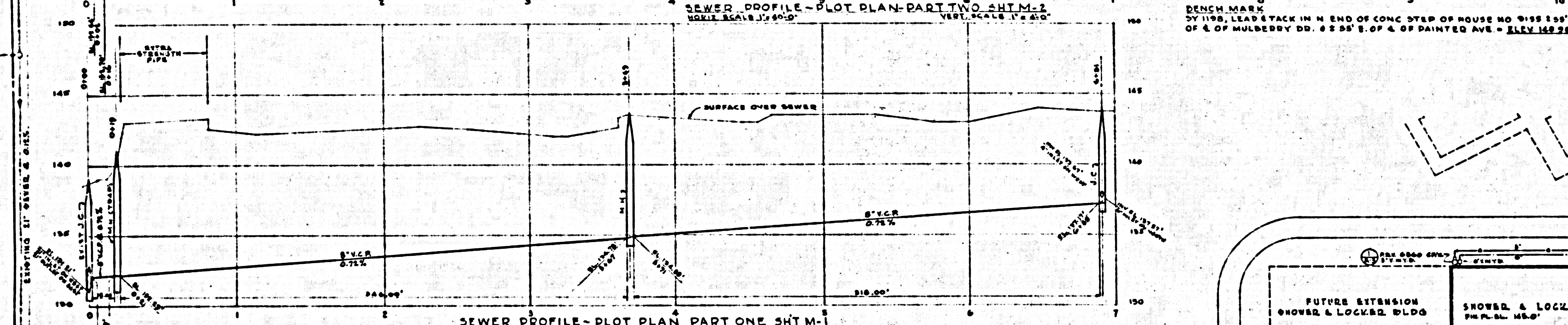
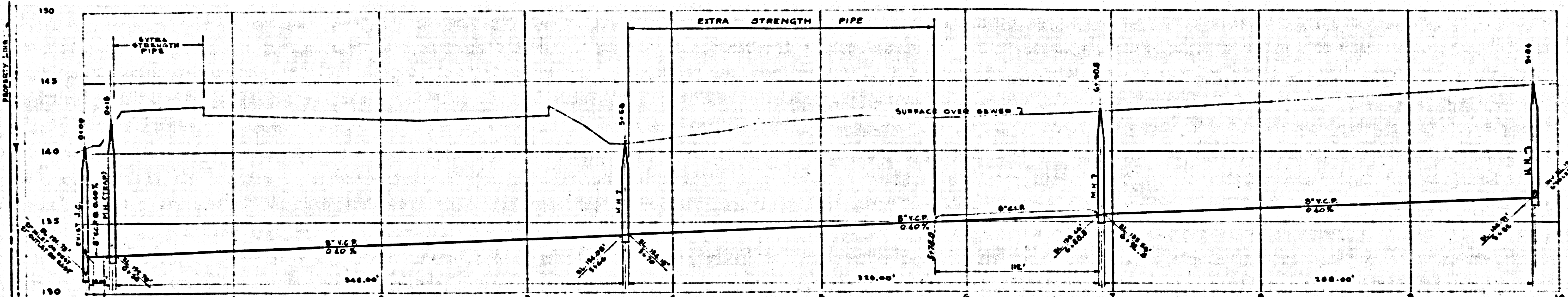


30
20
10
0
-10
-20
-30
-40
-50
-60
-70
-80
-90
-100
-110
-120
-130
-140
-150



DETAIL OF COLD WATER TANK FOR PRESSURE SYSTEM
SCALE 1/2" = 1'-0"
DETAIL 24574



PLOT PLAN - PART TWO
SCALE 1" = 48 FT.

NOTE: COVER FOR ALL VALVE BODIES CONTAINING GAS SHUT-OFF COCKS SHALL BE CONSPICUOUSLY MARKED "GAS SHUT-OFF".

NOTE: ALL ITEMS MARKED R.I.C. ON THE MECHANICAL DRAWINGS WHICH DEMAND PLUMBING INDICATE HEATING CONNECTIONS SHALL BE CONNECTED COMPLETE TO A PART OF THE PLUMBING AND/OR HEATING WORK.

PLUMBING, HEATING & VENTILATING WORK			
SEALS DIVISION OF ARCHITECTURE	APPROVED: BOARD OF TRUSTEES	PLOT PLAN - PART TWO	
	<i>[Signature]</i>	HIGH SCHOOL NO 5 (CONTRACT NO. 14) WHITTIER UNION HIGH SCHOOL DISTRICT HAINES AVE & MULBERRY DRIVE WHITTIER, CALIFORNIA	
STOCKLY & BARNFORD MECHANICAL ENGINEERS 124 WEST FOURTH ST. LOS ANGELES 14, CALIFORNIA	NOTE: CHECK ALL MEASUREMENTS AT JOB BEFORE PROCEEDING WITH THE WORK.	CONTR. NUMBER	PLAN
	<i>[Signature]</i>	DRAWN BY T. J. [Signature]	WILLIAM H. HARRISON, AIA ARCHITECT ARCHITECT BUILDING LOS ANGELES, CALIFORNIA
MECHANICAL	CHECKED BY [Signature]	BUILDING PART II	SECTION No. 5 SHEET NUMBER M-2 SCALE AS SHOWN DATE
			MAG. NO. 128