

SAN DIMAS BLDG. DIST. NO. 10

PROFILE ALIGNMENT AND GRADE OF **P.C. 4110**
SANITARY SEWERS PAGE **1**
 TO BE CONSTRUCTED IN

TRACT No 20164
PRIVATE CONTRACT NO. 4110

W.S. 48
 1 SHEET OF 2 PAGES (23,493)
 SCALE: VERT. 1"=6' HORIZ. 1"=40'
 JULY, 1956
 PREPARED IN THE OFFICES OF
CHARLES E. GLIDDEN (2)

UNDER THE SUPERVISION OF *W. J. Martin*
 REG. C. E. NO. 1870
 FOR LEGEND SEE PLAN NO. S-A-64

NOTES
 GRADES TO WHICH THIS IMPROVEMENT IS TO BE CONSTRUCTED ARE SHOWN ON PLANS AND PROFILES. GRADE POINTS FOR TOP OF CURB, CENTER LINE OF STREET, OR CENTER LINE OF ALLEYS ARE SHOWN BY CIRCLES ON PROFILES AT ALL POINTS BETWEEN RESPONSIBLE POINTS THE GRADE SHALL BE ESTABLISHED SO AS TO CONFORM TO A STRAIGHT LINE DRAWN BETWEEN SAID RESPONSIBLE POINTS.
 ELEVATIONS ARE IN FEET ABOVE U.S.C. & G.S. 1929 LEV. DATUM OF FEET.
 THE DRAWING AND THE DATA HEREON ARE HEREBY MADE A PART OF THE SPECIFICATIONS.
 WORK SHALL BE CONSTRUCTED ACCORDING TO SPECIFICATIONS ON FILE IN THE OFFICE OF THE COUNTY ENGINEER AND SHALL BE PROSECUTED ONLY AT THE INSTANCE OF THE COUNTY ENGINEER.
 BEFORE WORK CAN BE STARTED, THE CONTRACTOR MUST OBTAIN A PERMIT TO EXCAVATE IN COUNTY STREETS FROM THE PUBLIC WORKS DEPARTMENT, 100 W. 5TH ST. AND MAKE A DEPOSIT WITH THE COUNTY ENGINEER, ROOM 304 SAN ANTONIO BUILDING, A COUNTY ROAD DEPT., 100 W. 5TH ST. AND MAKE A DEPOSIT WITH THE COUNTY ENGINEER, ROOM 304 SAN ANTONIO BUILDING, A COUNTY ROAD DEPT., 100 W. 5TH ST. AND MAKE A DEPOSIT WITH THE COUNTY ENGINEER, ROOM 304 SAN ANTONIO BUILDING, A COUNTY ROAD DEPT., 100 W. 5TH ST. APPROVAL ON THIS PLAN BY THE COUNTY OF LOS ANGELES DOES NOT CONSTITUTE A REPRESENTATION AS TO THE ACCURACY OF THE LOCATION OF OR THE EXISTENCE OR NON-EXISTENCE OF ANY UNDERGROUND UTILITY PIPE OR STRUCTURE WITHIN THE LIMITS OF THIS PROJECT. THIS NOTE APPLIES TO ALL PAGES.
 IF WORK IS TO BE DONE IN A STATE HIGHWAY, A PERMIT MUST BE OBTAINED FROM THE STATE OF CALIFORNIA, DIVISION OF HIGHWAYS, 120 SOUTH SPRING STREET.

COUNTY OF LOS ANGELES, CALIFORNIA
 APPROVED, JOHN A. LAMBE, COUNTY ENGINEER
 APPROVED, A. M. RAWN, CHIEF ENGINEER
 CO. SAN. DIST. NO. 22
 BY *A. P. Coleman* *A. M. Rawn*
 SANITATION ENGINEER CHIEF ENGINEER
 CHECKED BY *R. P. Kuhn* 9-22-56
 OFFICE OF COUNTY ENGINEER, BUL. C. & H. NO. 7862

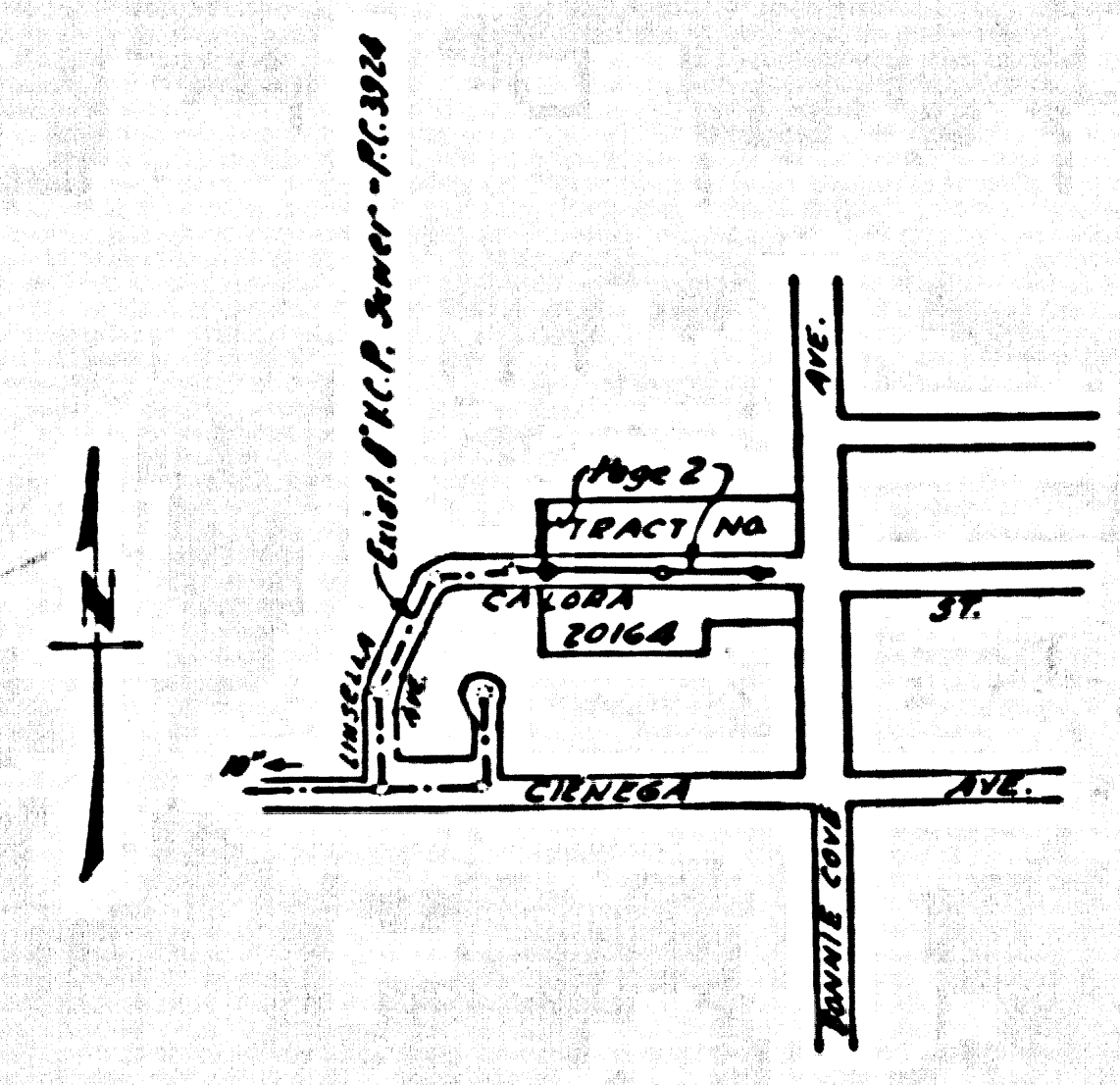
- NOTES**
 PROVIDE STAKES ON THE PROPERTY LINE OR PROPERTY LINES PRODUCED AT RIGHT ANGLES TO THE SEWER LINE AT THE CENTER LINE OF EACH MANHOLE.
 NO REPRESENTATIVE OF THE COUNTY ENGINEER WILL SURVEY OR LAYOUT ANY PORTION OF THE WORK.
 THE OWNER OR HIS AUTHORIZED REPRESENTATIVE SHALL FURNISH THE COUNTY ENGINEER WITH GRADE SHEETS WITH STATIONING FOR ALL HOUSE LATERALS AND Y BRANCHES AND SHALL PROVIDE STAKES FOR THEM AT THEIR PROPER LOCATIONS WITH STATIONING PLAINLY MARKED. ANY CHANGE IN LOCATION SHALL BE REQUESTED BY WRITING BY THE OWNER OR HIS REPRESENTATIVE.
 NO REVISIONS SHALL BE MADE IN THESE PLANS WITHOUT THE APPROVAL OF THE COUNTY ENGINEER.
 1. USE STANDARD MANHOLE FRAMES AND COVERS, S.A.-117, 60" DIA.-AS-10000-1.
 2. USE STANDARD STRENGTH PIPE 8" DIA.-AS-10000-1.
 3. USE CEMENT MORTAR FOR ALL VITRIFIED CLAY PIPE JOINTS.
 4. REINFORCE ALL TRENCH WITHIN PAVED AREA TO MEET L. A. COUNTY ROAD DEPT., OR CALIF. STATE HIGHWAY DEPT. REQUIREMENTS IN ACCORDANCE WITH PERMITS.
 5. ENCASE FOUR FEET OF SEWER AT POINTS OF INTERFERENCE WITH POLES, S.A.-119.
 6. HOUSE LATERALS TO BE CONSTRUCTED WITH JOISTS AT PROPERTY LINE... FEET BELOW CURB GRADE AS-10000-1.
 7. ALL STRUCTURES SHALL BE BRICK SEWER STRUCTURES, S.A.-104, 60" DIA.-AS-10000-1.
 8. FOR ALLOWABLE MARLAGE TEST USE FORMULA NO. 1, SPEC. SEC. 64.
 9. THE PRIVATE ENGINEER IS TO FURNISH THE HOUSE LATERAL DEPTH AT THE PROPERTY LINE BEYOND THE TOP OF CURB ELEVATION FOR BRICK HOUSE LATERALS, ON THE GRADE SHEET.

NO CHARGE FOR CONNECTIONS
R. P. Kuhn 9-22-56

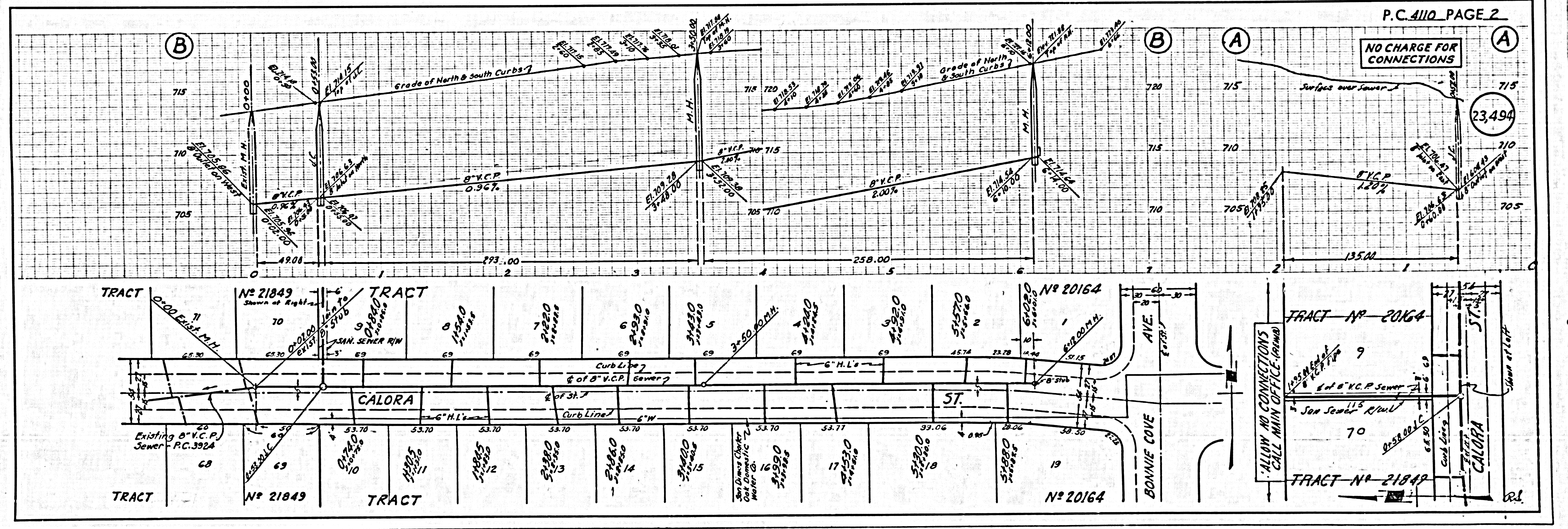
Revision Approved:
 Sec. 11 added to plan - Page 2
 2-18-56
R. P. Kuhn
 Office of the County Engineer
 Reg. C.E. 7860

Checked 9-27-56 McFarren

BM. 56BM 257 Elev. 731.29
 1 & 1/2 B.M. 45' South of Curb Ref.
 @ S.W. Corner Bonnie Cove Ave.
 & Arrow Hwy.



INDEX MAP
P.C. 4110
SCALE - 1"=600'



NO CHARGE FOR CONNECTIONS

(23,494)

ALLOW NO CONNECTIONS
 CALL MAIN OFFICE (49494)

P.C. 4110