

B.M. S.L. 11, Elev. 2363.522
 2 1/2' W. edge of Con. Drive
 To Home # 957 Ave. 12 41' N
 of 6 Ave 1 2 7/8' E of 10th St W.

LANCASTER BLDG. DIST. NO. 8

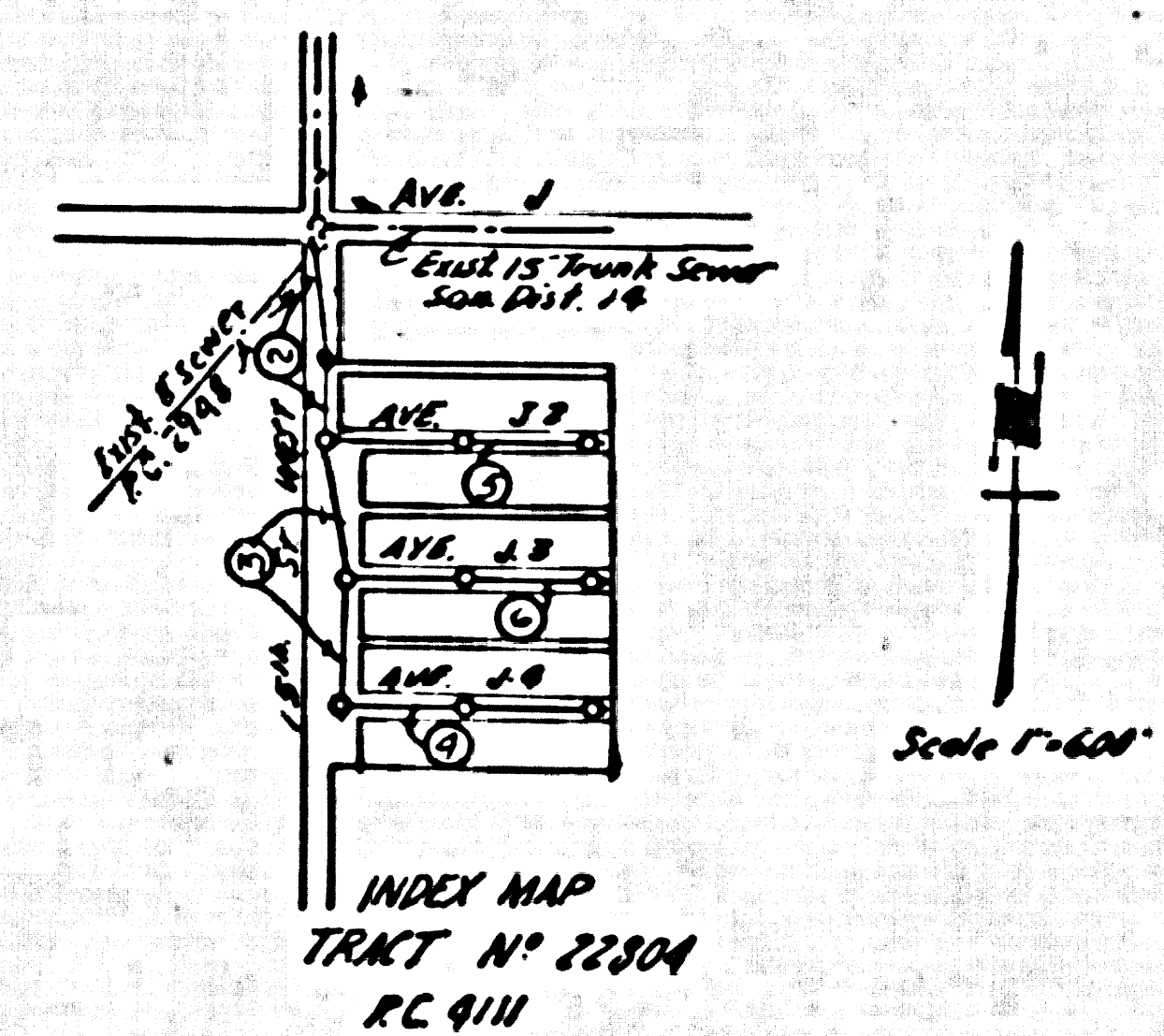
PROFILE ALIGNMENT AND GRADE OF P.C. 4111
 SANITARY SEWERS PAGE 1
 TO BE CONSTRUCTED IN
 TRACT No 22804 (24,891)

- NOTES
1. PROVIDE STAKES ON THE PROPERTY LINE OR PROPERTY LINES PRODUCED AT RIGHT ANGLES TO THE SEWER LINE AT THE CENTER LINE OF EACH MANHOLE.
 2. NO REPRESENTATIVE OF THE COUNTY ENGINEER WILL SURVEY OR LAYOUT ANY PORTION OF THE WORK.
 3. THE OWNER OR HIS AUTHORIZED REPRESENTATIVE SHALL FURNISH THE COUNTY ENGINEER WITH GRADE SHEETS AND STATION FOR ALL HOUSE LATERALS AND Y BRANCHES AND SHALL PROVIDE STAKES FOR THEM AT THEIR PROPER LOCATIONS WITH STATIONING PLAINLY MARKED. ANY CHANGE IN LOCATION SHALL BE REQUESTED IN WRITING BY THE OWNER OR HIS REPRESENTATIVE.
 4. NO REVISIONS SHALL BE MADE IN THESE PLANS WITHOUT THE APPROVAL OF THE COUNTY ENGINEER.
 5. USE STANDARD MANHOLE FRAMES AND COVERS, S.A.-117, EXCEPT AS NOTED.
 6. USE STANDARD STRENGTH PIPE EXCEPT AS NOTED.
 7. USE CEMENT MORTAR FOR ALL WITHIN CLAY PIPE JOINTS.
 8. RESURFACE ALL TRENCH WITHIN PAVED AREA TO MEET L.A. COUNTY ROAD DEPT. OR CALIF. STATE HIGHWAY DEPT. REQUIREMENTS IN ACCORDANCE WITH PERMITS.
 9. ENCASE FOUR FEET OF SEWER AT POINTS OF INTERFERENCE WITH POLES, S.A.-119.
 10. HOUSE LATERALS TO BE CONSTRUCTED WITH INVERTS AT PROPERTY LINE 6" BELOW CURB GRADE EXCEPT AS NOTED.
 11. ALL STRUCTURES SHALL BE BRICK SEWER STRUCTURES, S.A.-184, EXCEPT AS NOTED.
 12. FOR ALLOWABLE LEAKAGE TEST USE FORMULA NO. 1, S.P.C.S., SEC. 5.
 13. MANHOLE TOPS IN UNIMPROVED RIGHTS-OF-WAY TO BE 6" ABOVE FINISHED GRADE.
 14. The Private Engineer is to furnish the House Lateral depth of the property line below the top of curb elevation for each House Lateral, on the Grade Sheet.
 15. Ball all joints with 4" of cement mortar that are within 20' of all property lines or in Sanitary Sewer Right of Way.

PRIVATE CONTRACT NO. 4111
 W.S. 71
 3 SHEETS; 6 PAGES
 SCALE: 1" = 20' JULY, 1956
 PREPARED BY THE OFFICES OF
 MUNNELL'S TITTLE ENGR. CO., INC.
 BY: Ralph B. Munnell REG. C. E. NO. 2080
 FOR LEGEND SEE PLAN NO. S.A.-64

NO CHARGE FOR CONNECTIONS
 P.S. Kuhn 9-20-56

Revision Approved:
 P.S. Kuhn 1-4-57
 Office of the County Engineer, Reg. C.E. 7840
 All grades on all Pages, Revised.
 Location, Page 2, 3 & 5, Revised.
 Pipe sizes, Page 2, revised.



NOTE: GRADES TO WHICH THIS IMPROVEMENT IS TO BE CONSTRUCTED ARE SHOWN ON PLANS AND PROFILE GRADE POINTS FOR TOP OF CURB, CENTER LINE OF STREETS, OR CENTER LINE OF ALLEYS ARE SHOWN BY CIRCLES ON PROFILES AT ALL POINTS BETWEEN INDICATED POINTS THE GRADE SHALL BE ESTABLISHED SO AS TO CONFORM TO A STRAIGHT LINE DRAWN BETWEEN SAID INDICATED POINTS.

REVISIONS ARE IN PENCIL ABOVE USE S.P.C.S. DESIGN AND SHOW DATE OF 1957

THIS DRAWING AND THE DATA HEREON ARE HEREBY MADE A PART OF THE SPECIFICATIONS AND SHALL BE CONSIDERED AS SUCH BY THE CONTRACTOR.

BEFORE WORK CAN BE STARTED, THE CONTRACTOR MUST OBTAIN A PERMIT TO EXCAVATE IN COUNTY STREETS FROM THE L.A. COUNTY ROAD DEPT. THE PERMIT MUST BE OBTAINED WITH THE COUNTY ENGINEER, ROOM 324 FARM ANGLEMAN BUILDING 333 SO. BROADWAY IMPROVEMENT TO COVER THE COST OF CONSTRUCTION INSPECTION AND RECORD PLANS.

APPROVAL OF THIS PLAN BY THE COUNTY OF LOS ANGELES DOES NOT CONSTITUTE A REPRESENTATION AS TO THE ACCURACY OF THE LOCATION OF OR THE EXISTENCE OR NON-EXISTENCE OF ANY UNDERGROUND UTILITY PIPE, OR STRUCTURE WITHIN THE LIMITS OF THIS PROJECT. THIS NOTE APPLIES TO ALL PAGES.

IF WORK IS TO BE DONE IN A STATE HIGHWAY, A PERMIT MUST BE OBTAINED FROM THE STATE OF CALIFORNIA, DIVISION OF HIGHWAYS, 120 SOUTH SPRING STREET.

COUNTY OF LOS ANGELES, CALIFORNIA

APPROVED, JOHN A. LAMBE, COUNTY ENGINEER
 APPROVED, A. M. RAWN, CHIEF ENGINEER
 TO SAN DIST NO. 14

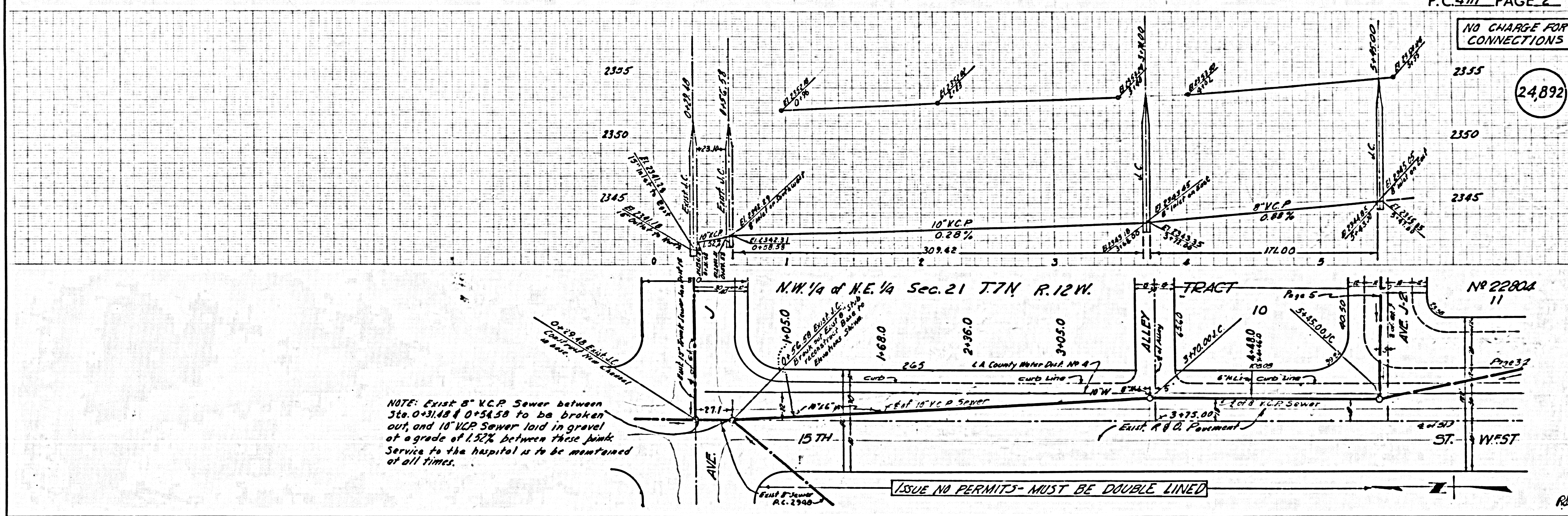
BY: J. P. Collins SANITATION ENGINEER
 BY: R. B. Munnell CHIEF ENGINEER

CHECKED BY: P.S. Kuhn 9-20-56
 OFFICE OF COUNTY ENGINEER, REG. C. E. NO. 7840

P.C. 4111 PAGE 2

NO CHARGE FOR CONNECTIONS

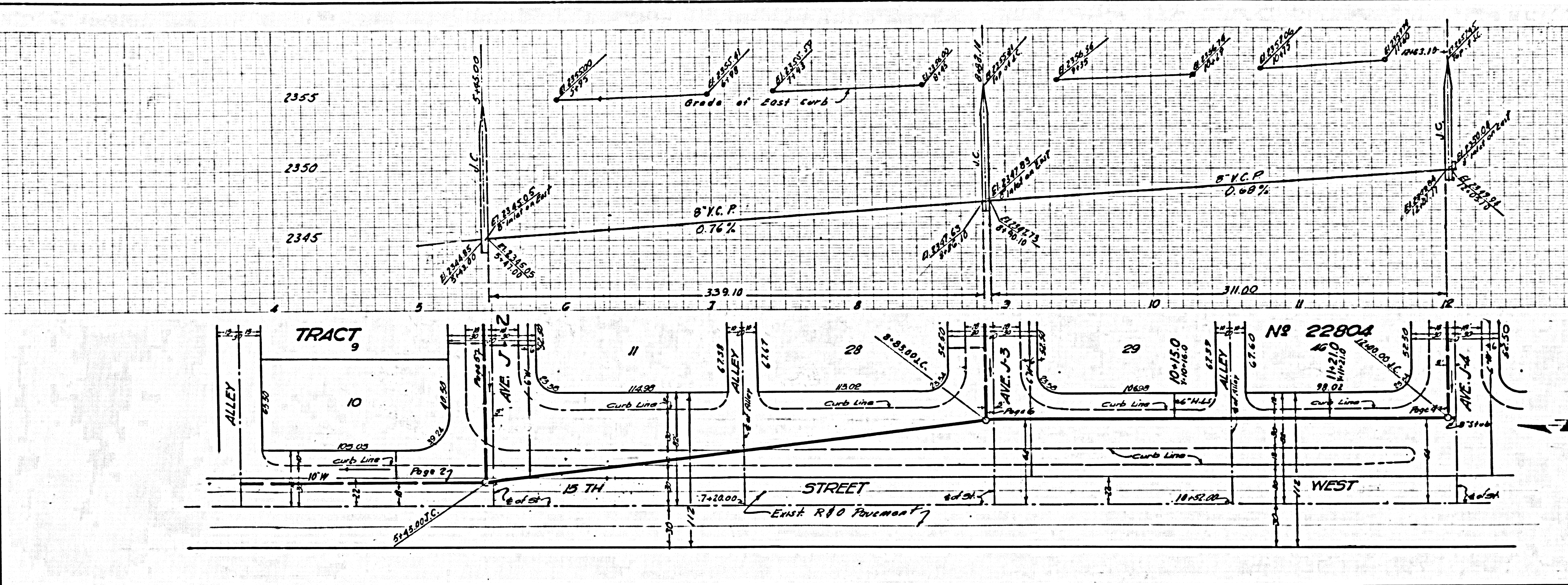
(24,892)



P.C. 4111 TRACT. 55804

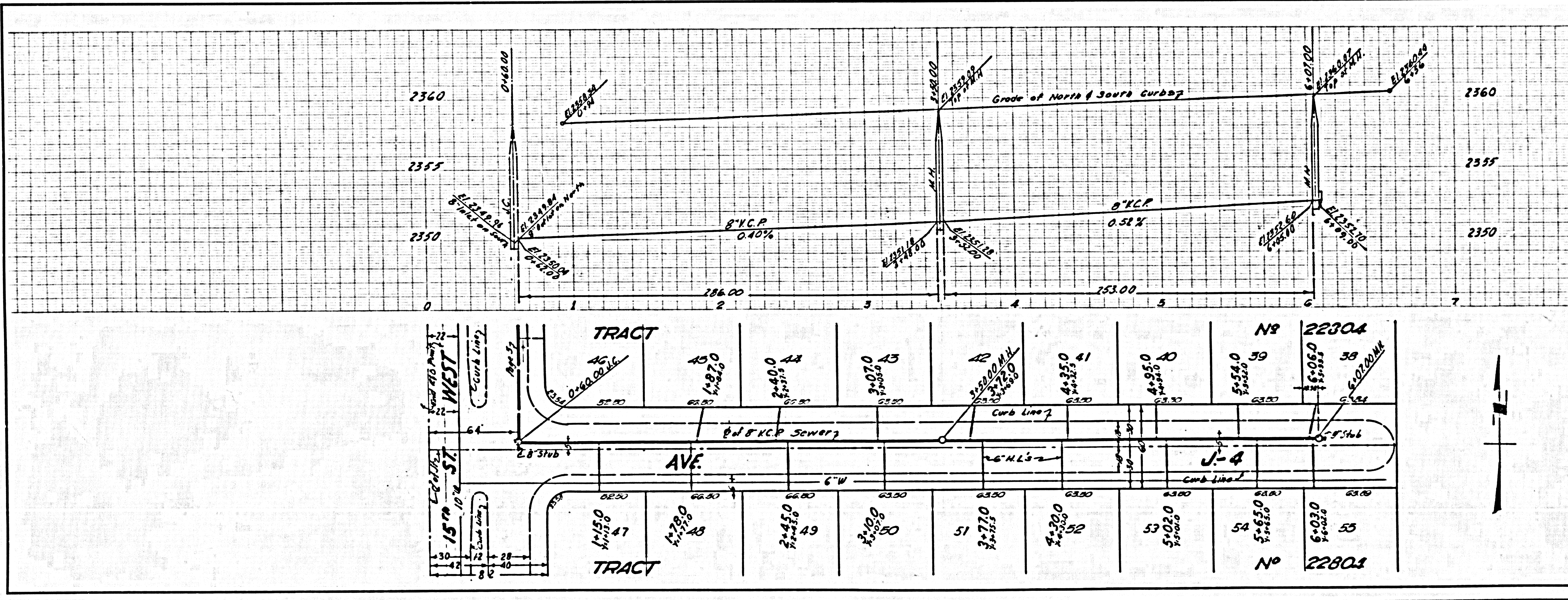
NO CHARGE FOR CONNECTIONS

24,893



NO CHARGE FOR CONNECTIONS

24,894

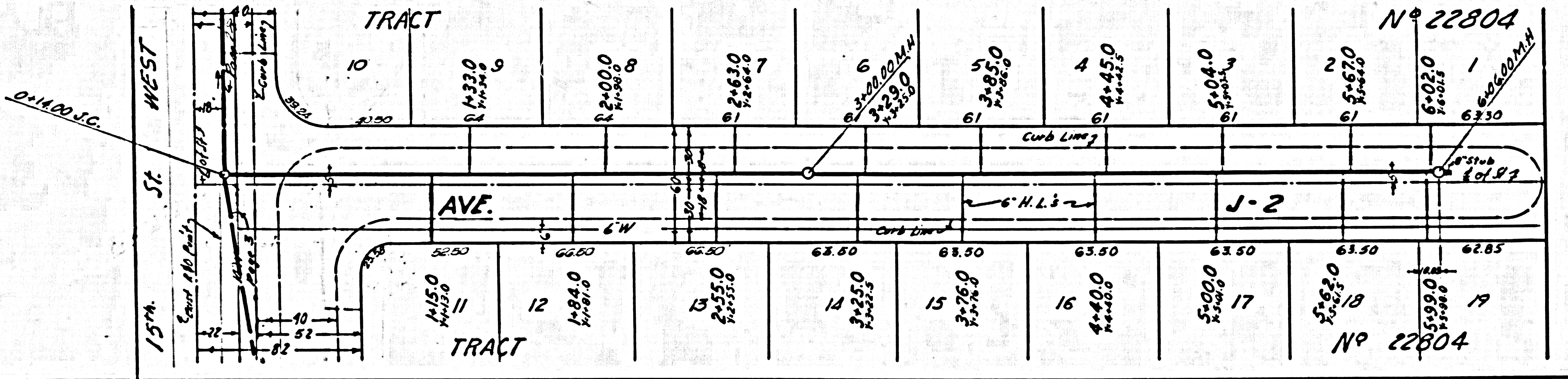
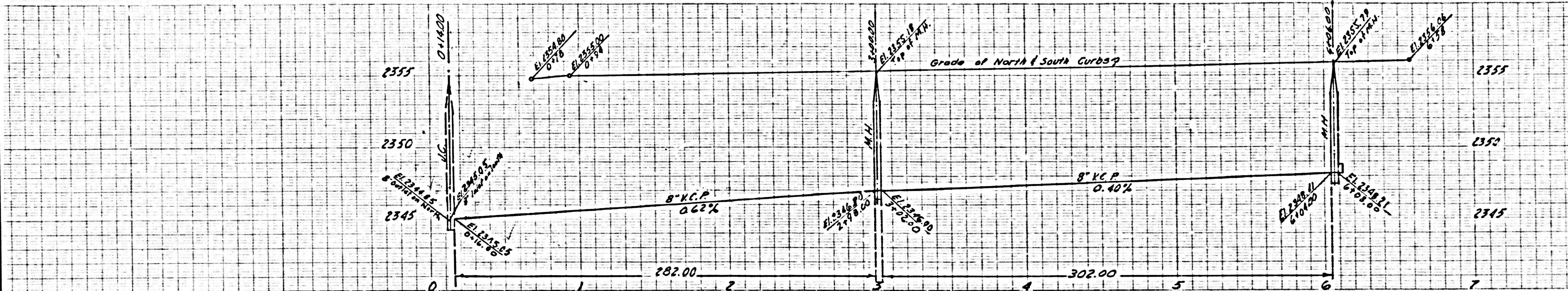


40550117347

ORP

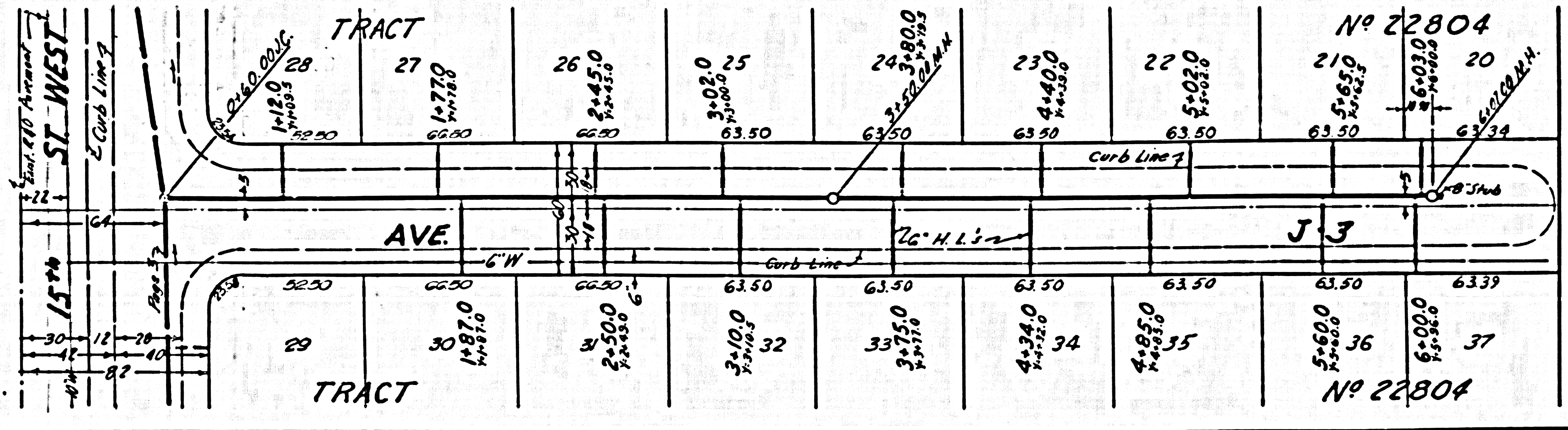
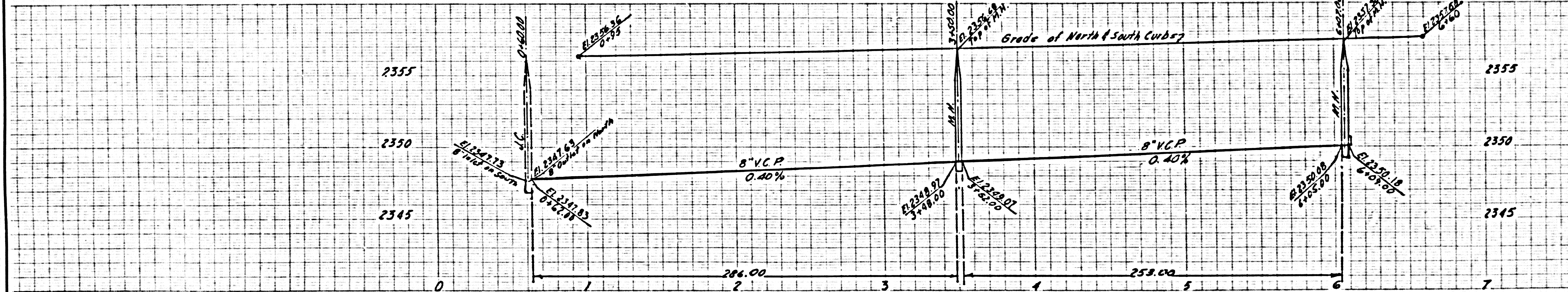
NO CHARGE FOR CONNECTIONS

24895



NO CHARGE FOR CONNECTIONS

24896



RL.