

LANCASTER BLDG. DIST. NO. 8

PROFILE ALIGNMENT AND GRADE OF P.C. 4113
 SANITARY SEWERS PAGE 1
 TO BE CONSTRUCTED IN

TRACT No 28145
 PRIVATE CONTRACT NO. 4113

W.S. 70
 - 3 SHEETS, - 5 PAGES

SCALE: 1" = 10' JULY, 1956

ROSENTHAL ENGINEERING COMPANY

By Arthur G. Rosenthal
 REG. C. E. NO. 8885

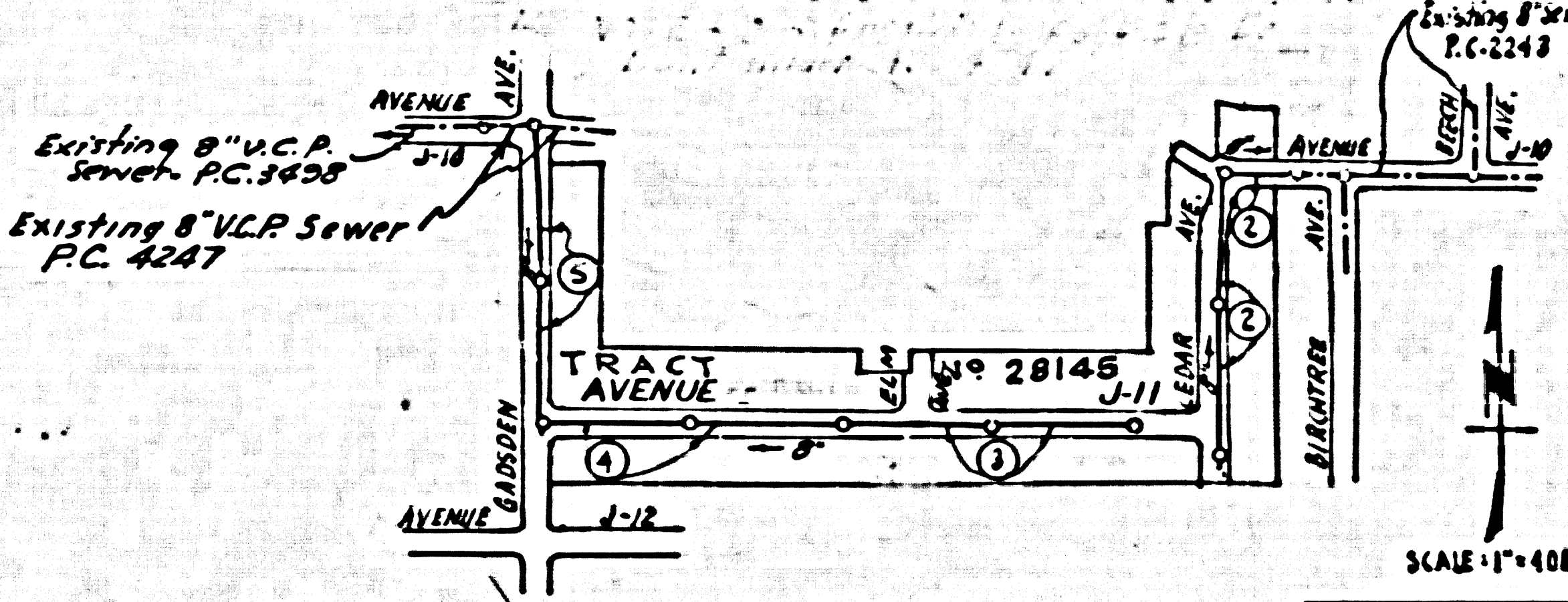
FOR LEGEND SEE PLAN NO. S-A-64

33477

B.M. Elev. = 2371.201
 C.S. Man. @ S.E. cor Jane Reynolds Park
 2" I.P. with brass cap marked B.E. 2177 per C.S.P. 204-214

- NOTES:
1. PROVIDE STAKES ON THE PROPERTY LINE OR PROPERTY LINES PRODUCED AT RIGHT ANGLES TO THE SEWER LINE AT THE CENTERLINE OF EACH MANHOLE.
 2. NO REPRESENTATIVE OF THE COUNTY ENGINEER WILL SURVEY OR LAY OUT ANY PORTION OF THE WORK.
 3. THE PRIVATE ENGINEER SHALL FURNISH THE COUNTY ENGINEER WITH GRANT SHEETS AND STATION MAPS FOR ALL HOUSE LATERALS AND Y-BEACHES AND SHALL PROVIDE STAKES FOR THEM AT THEIR PROPER LOCATIONS WITH STATIONING ALIGNED MARKED. ALL HOUSE LATERALS SHALL BE CONSTRUCTED IN A STEADY ALIGNMENT AT RIGHT ANGLES FROM THE MAIN LINE SEWER EXCEPT AS SHOWN ON THE PLANS. HOUSE LATERALS FROM CHIMNEYS SHALL NOT HAVE AN ANGLE OF LESS THAN 45° WITH THE MAIN LINE SEWER. ANY CHANGE IN ALIGNMENT SHALL BE REQUESTED IN WRITING BY THE PRIVATE ENGINEER.
 4. THE PRIVATE ENGINEER SHALL FURNISH THE HOUSE LATERAL DEPTH AT THE PROPERTY LINE BELOW THE TOP OF CURB ELEVATION FOR EACH HOUSE LATERAL ON THE BIDDING SHEET.
 5. NO REVISIONS SHALL BE MADE IN THESE PLANS WITHOUT THE APPROVAL OF THE COUNTY ENGINEER.
 6. THE CONTRACTOR SHALL NOTIFY THE CONSTRUCTION DIVISION BY TELEPHONE (MADRIS 5-4747, EXT. 8151), AT LEAST TWENTY-FOUR HOURS BEFORE STARTING ANY WORK UNDER THIS CONTRACT.
 7. MANHOLES SHALL BE 24" SEWER STRUCTURES PER S-4-104. RECESSIVE CONDUIT MANHOLES PER S-4-135 OR S-4-178 MAY BE USED AS AN ALTERNATE IN LOCATIONS APPROVED BY THE COUNTY ENGINEER.
 8. USE BRANDED MANHOLE FRAMES AND COVERS, S-4-117, EXCEPT AS NOTED.
 9. MANHOLE TOPS IN UNPAVED RIGHTS-OF-WAY TO BE SIX INCHES ABOVE FINISHED GRADE.
 10. USE EXTRA STRENGTH PIPE. ALL PIPE IS STANDARD DEPTH EXCEPT AS NOTED.
 11. USE MECHANICAL COMPRESSION JOINTS FOR ALL V.C.P. JOINTS PER SPEC'S, SECS. 36 & 44.
 12. MANHOLE TOPS SHALL BE OF JOINT COMPOUND PER SPEC'S, SECS. 33 & 49, OR MECHANICAL COMPRESSION JOINTS PER SPEC'S, SEC. 36.
 13. IF A POWER POLE IS WITHIN THREE FEET OF THE SEWER, THE SEWER SHALL BE ENCASED PER S-4-173, CASE III, TWO FEET ON EITHER SIDE FROM THE POINT OF INTERFERENCE.
 14. IF DURING THE COURSE OF CONSTRUCTION IT IS DETERMINED THAT THERE IS LESS THAN FOUR FEET OF COVER OVER THE TOP OF A MAIN LINE OR HOUSE LATERAL V.C.P. SEWER WHICH IS NOT INDICATED ON THE PLANS, THE PIPE SHALL BE ENCASED PER S-4-173, CASE III, UNLESS OTHERWISE APPROVED BY THE COUNTY ENGINEER.
 15. HOUSE LATERALS TO BE CONSTRUCTED WITH INVERTS AT PROPERTY LINE .8 FEET BELOW CURB GRADE EXCEPT AS NOTED.
 16. RESURFACE ALL TRENCHES WITHIN PAVED AREAS TO MEET L.A. COUNTY ROAD DEPT. OR CALIFORNIA STATE HIGHWAY REQUIREMENTS IN ACCORDANCE WITH PERMITS.
 17. FOR ALLOWABLE LEAKAGE TEST USE FORMULA I....., SPEC'S, SEC. 54.
 18. NOTE: OMIT SHEET TWO, PAGE 4-B.

COLLECT CHARGES AS INDICATED
 S.K. Oude 11-20-56



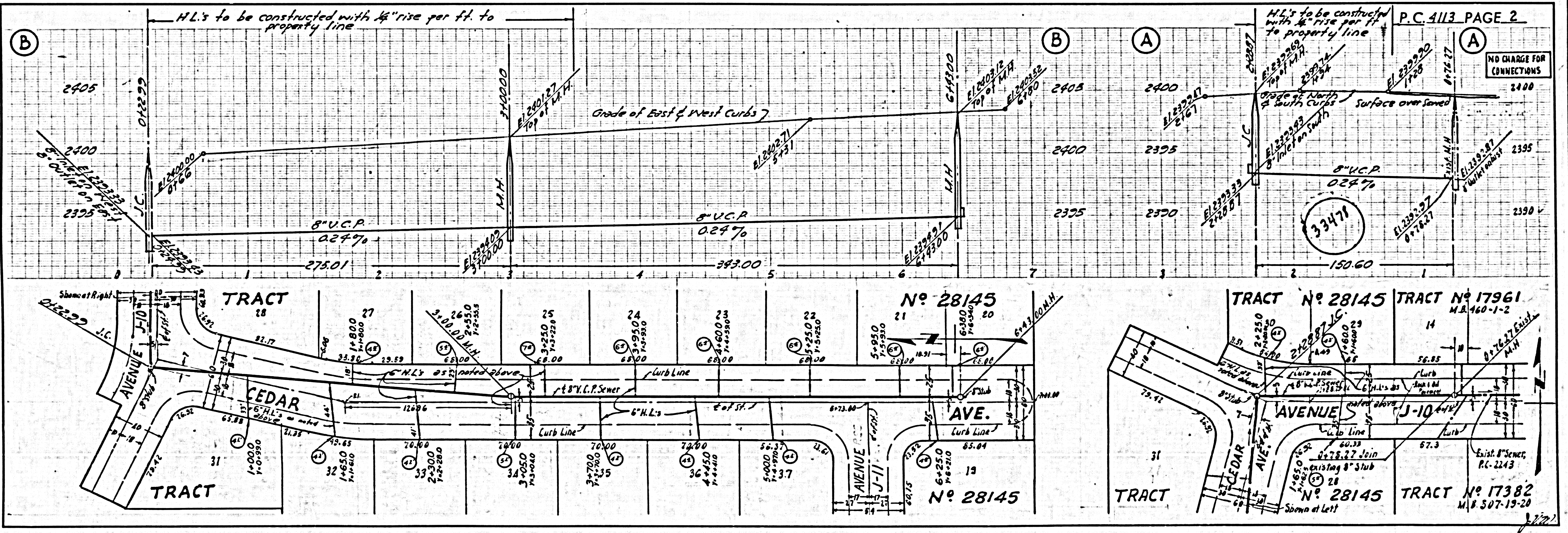
INDEX MAP
 TRACT No 28145
 P.C. 4113

REVISION BLOCK
 Revised Plans to conform to
 The City Ordinance No. 3687
 Approved by the City Engineer
 Date 11-20-56
 S.K. Oude

NOTE: GRADES TO WHICH THIS IMPROVEMENT IS TO BE CONSTRUCTED ARE SHOWN ON PLANS AND PROFILES. GRADE POINTS FOR TOP OF CURB, CENTER LINE OF STREETS, OR CENTER LINE OF ALLEYS ARE SHOWN BY CIRCLES ON PROFILES. AT ALL POINTS BETWEEN DESIGNATED POINTS THE GRADE SHALL BE ESTABLISHED SO AS TO CONFORM TO A STRAIGHT LINE DRAWN BETWEEN SAID DESIGNATED POINTS.
 ELEVATIONS ARE IN FEET ABOVE U.S.C. & G.S. SEA LEVEL DATUM OF 1929. (Refer to Plan S-A-64)
 THIS DRAWING AND THE DATA HEREON ARE HEREBY MADE A PART OF THE SPECIFICATIONS.
 WORK SHALL BE CONSTRUCTED ACCORDING TO SPECIFICATIONS FILED IN THE OFFICE OF THE COUNTY ENGINEER AND SHALL BE PROSECUTED ONLY IN THE PRESENCE OF THE COUNTY ENGINEER.
 BEFORE WORK CAN BE STARTED, THE CONTRACTOR MUST OBTAIN A PERMIT TO EXCAVATE IN COUNTY STREETS FROM THE COUNTY ROAD DEPT. (MADRIS 5-4747, EXT. 8151) AND PAY A FEE TO THE COUNTY ENGINEER, ROOM 808, 600 GRASSMERE BLVD., LOS ANGELES, CALIFORNIA. THE PERMIT TO EXCAVATE WILL COVER THE COST OF CONSTRUCTION PROTECTION AND RECORD PLANS.
 APPROVAL OF THIS PLAN BY THE COUNTY OF LOS ANGELES DOES NOT CONSTITUTE A REPRESENTATION AS TO THE ACCURACY OF THE LOCATION OF OR THE EXISTENCE OR NON-EXISTENCE OF ANY UNDERGROUND UTILITY PIPE, OR STRUCTURE WITHIN THE LIMITS OF THIS PROJECT. THIS NOTE APPLIES TO ALL PAGES.
 IF WORK IS TO BE DONE IN A STATE HIGHWAY, A PERMIT MUST BE OBTAINED FROM THE STATE OF CALIFORNIA, DIVISION OF HIGHWAYS, 120 SOUTH SPRING STREET, LOS ANGELES, CALIFORNIA.

COUNTY OF LOS ANGELES, CALIFORNIA
 APPROVED, JOHN A. LAMME, COUNTY ENGINEER
 APPROVED, A. M. RAWN, CHIEF ENGINEER
 By A.P. Collins
 SANITATION ENGINEER
 CHECKED BY P. Kuhn 11-30-56
 OFFICE OF COUNTY ENGINEER, REG. C. E. NO. 7860

J.N. 2360.42



P.C. 4113 PAGE 2

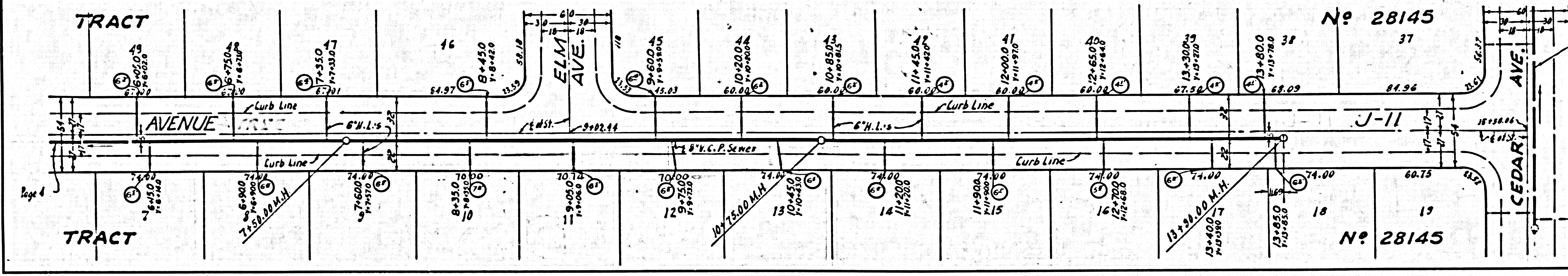
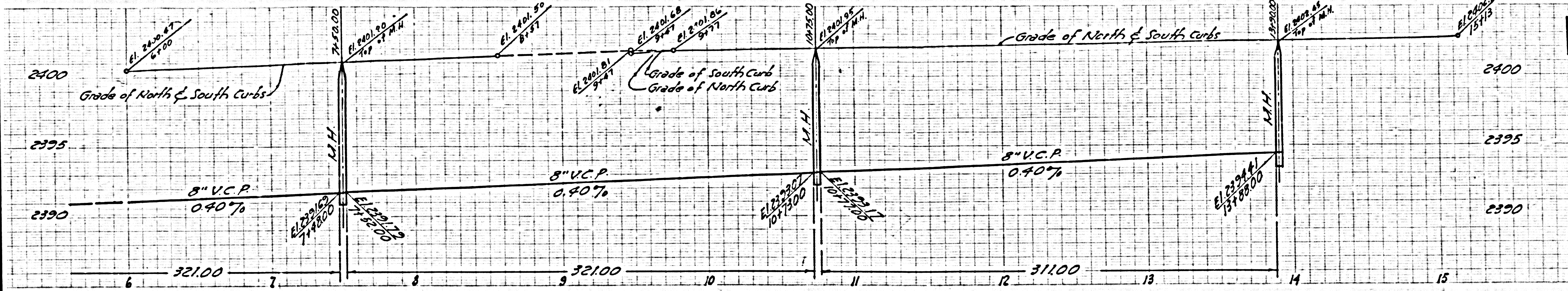
NO CHARGE FOR CONNECTIONS
 2400

33477

P.C. 4113

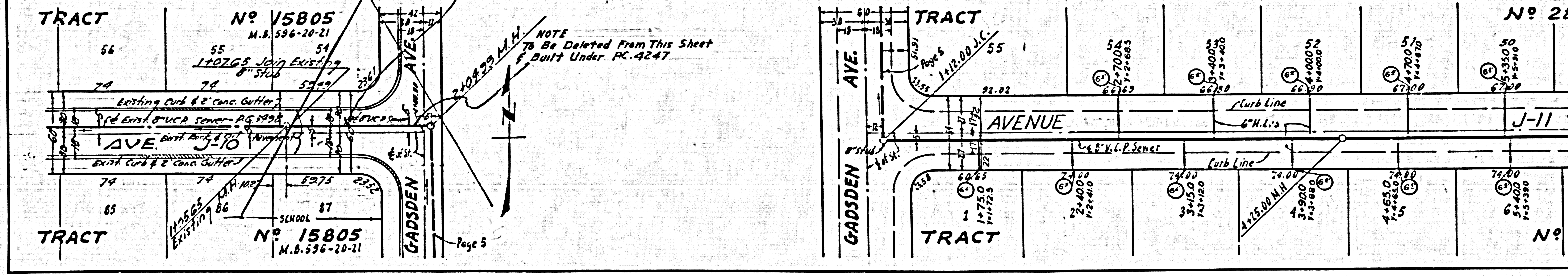
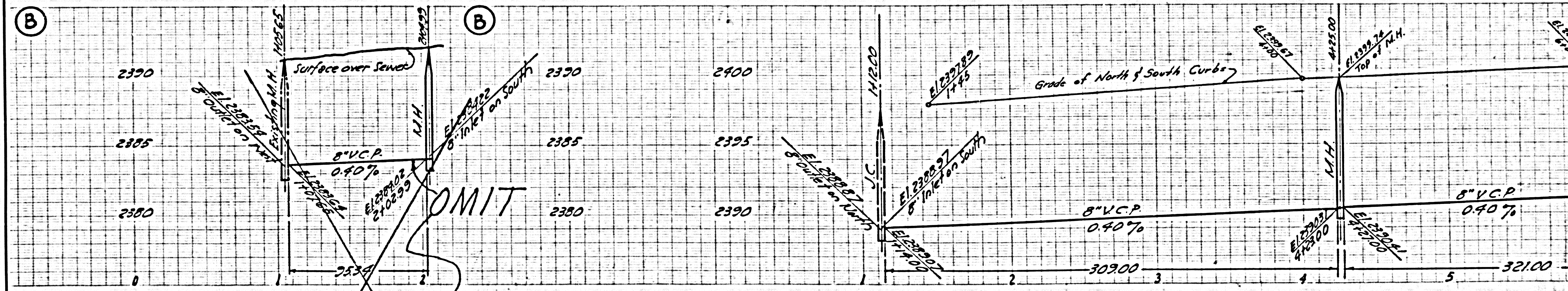
NO CHARGE FOR CONNECTIONS

33479



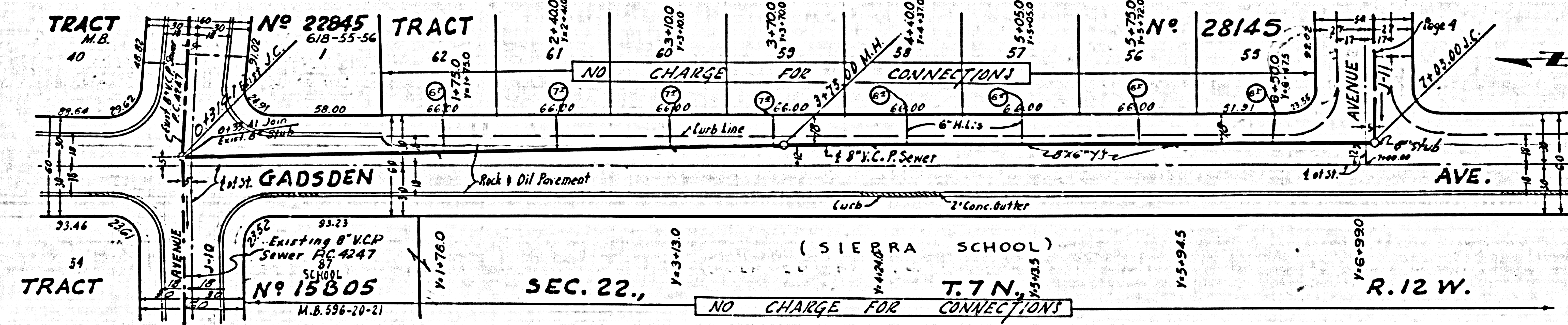
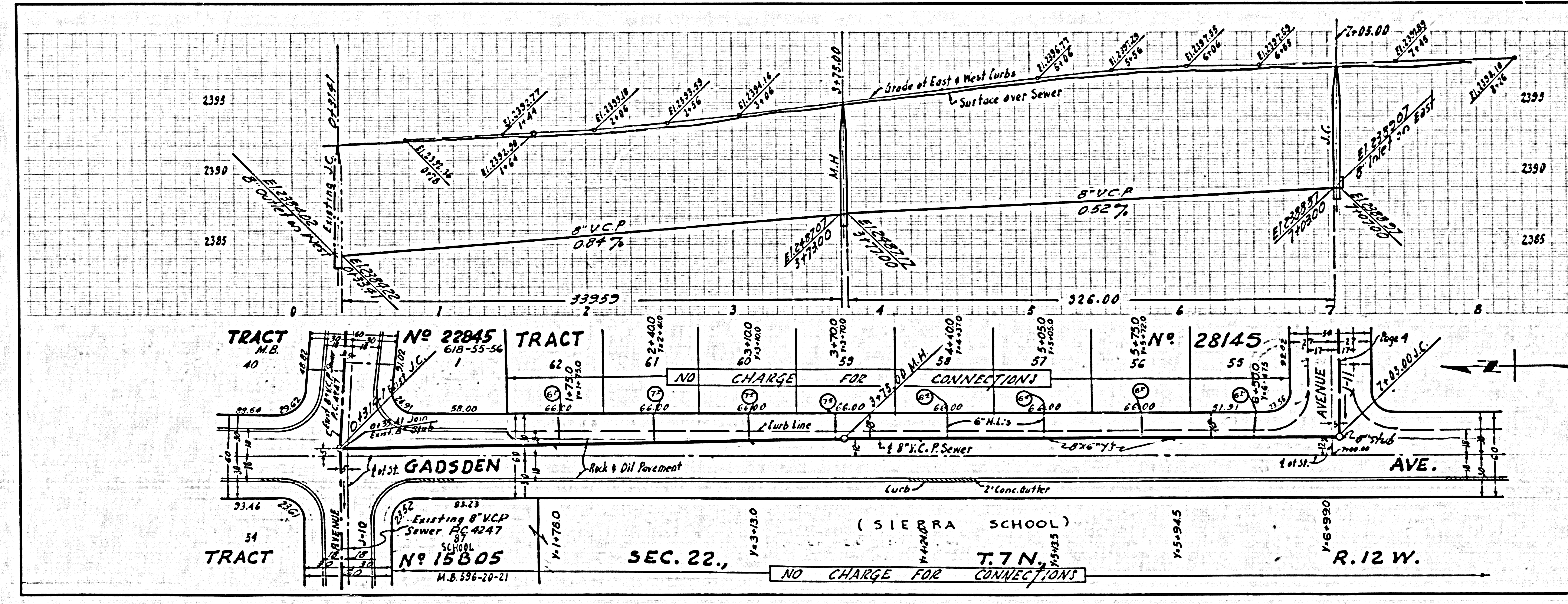
NO CHARGE FOR CONNECTIONS

33480



COLLECT CHARGES AS INDICATED

33481



0-5113

2/21