

INDEX MAP
TRACT No. 16228
P.C. 4120
SCALE 1" = 200'

BENCH MARK: 1-7 RE 329 Elev. 114.580
Braz 5th County Survey Map
set in wall 15" below surface
100' S of E of Imperial Highway &
12' E of Valley View Avenue

Note: Add 0.63' to El. 114.580
to be on SY Datum

Note: Numbers in circles
indicate page numbers

NORWALK BLDG. DIST. NO. 4.2

- NOTES**
- PROVIDE STAKES ON THE PROPERTY LINE OR PROPERTY LINES PRODUCED AT RIGHT ANGLES TO THE SEWER LINE AT THE CENTER LINE OF EACH MANHOLE.
 - NO REPRESENTATIVE OF THE COUNTY ENGINEER WILL SURVEY OR LAYOUT ANY PORTION OF THE WORK.
 - THE OWNER OR HIS AUTHORIZED REPRESENTATIVE SHALL FURNISH THE COUNTY ENGINEER WITH GRADE SHEETS AND STATIONING FOR ALL HOUSE LATERALS AND T-BRANCHES AND SHALL PROVIDE STAKES FOR THEM AT THESE PROPER LOCATIONS WITH STATIONING AND PLAINLY MARKED. ANY CHANGE IN LOCATION SHALL BE REQUESTED IN WRITING BY THE OWNER OR HIS REPRESENTATIVE.
 - NO REVISIONS SHALL BE MADE IN THESE PLANS WITHOUT THE APPROVAL OF THE COUNTY ENGINEER.
 - USE STANDARD MANHOLE FRAMES AND COVERS S.A.-117, EXCEPT AS NOTED.
 - USE STANDARD STRENGTH PIPE EXCEPT AS NOTED.
 - USE CEMENT MORTAR FOR ALL VITRIFIED CLAY PIPE JOINTS.
 - RESURFACE ALL TRENCH WITHIN PAVED AREA TO MEET L. A. COUNTY ROAD DEPT., OR CALIF. STATE HIGHWAY DEPT. REQUIREMENTS IN ACCORDANCE WITH PERMITS.
 - SHOULDER FOUR FEET OF SEWER AT POINTS OF INTERFERENCE WITH POLES, S.A.-119.
 - HOUSE LATERALS TO BE CONSTRUCTED WITH INVERTS AT PROPERTY LINE $\frac{1}{2}$ FEET BELOW CURB GRADE EXCEPT AS NOTED.
 - ALL STRUCTURES SHALL BE BRICK SEWER STRUCTURES, S.A.-104, EXCEPT AS NOTED.
 - FOR ALLEYS AND DRIVEWAYS USE 18" MANHOLE NO. 1 SPEC'S, SIX BY SIX.
 - MANHOLE DEPTH IN UNIMPROVED RIGHTS-OF-WAY TO BE 6" ABOVE FINISHED GRADE.
 - The contractor shall satisfy himself as to all subsurface conditions and shall be responsible for their location.
 - The resetting of manhole tops to finished pavement is part of the contract.
 - The Private Engineer is to furnish the house lateral depth at the property line below the top of curb elevation for each house lateral, on the grade sheet.

NO CHARGE
FOR CONNECTIONS
-Sik Oude 2-28-56

PROFILE ALIGNMENT AND GRADE OF **P.C. 4120**
SANITARY SEWERS PAGE 1

TO BE CONSTRUCTED IN
TRACT No. 16228 (23715)

PRIVATE CONTRACT NO. 4120

W.S. 34
2 SHEETS, 3 PAGES

SCALE: HORIZ. 1" = 40' VERT. 1" = 4'
AUGUST, 1956

PREPARED IN THE OFFICES OF
McINTIRE & QUIROS INC.

By Oliver M. Quiros REG. NO. 3538
FOR LEGEND SEE PLAN NO. S-A-64

NOTES

GRADE TO WHICH THIS IMPROVEMENT IS TO BE CONSTRUCTED ARE SHOWN ON PLANS AND PROFILES. GRADE POINTS FOR TOP OF CURB, CENTER LINE OF STREET, OR CENTER LINE OF ALLEYS ARE SHOWN BY CIRCLES ON PROFILES. AT ALL POINTS BETWEEN DESIGNATED POINTS THE GRADE SHALL BE ESTABLISHED SO AS TO CONFORM TO A STRAIGHT LINE DRAWN BETWEEN SAID DESIGNATED POINTS.

ELEVATIONS ARE IN FEET ABOVE U.S.C. & G.S. MEAN SEA LEVEL DATUM OF 1929.

THIS DRAWING AND THE DATA HEREON ARE HEREBY MADE A PART OF THE SPECIFICATIONS.

WORK SHALL BE CONSTRUCTED ACCORDING TO SPECIFICATIONS ON FILE IN THE OFFICE OF THE COUNTY ENGINEER AND SHALL BE INSPECTED ONLY IN THE PRESENCE OF THE COUNTY ENGINEER.

BEFORE WORK CAN BE STARTED, THE CONTRACTOR MUST OBTAIN A PERMIT TO EXCAVATE IN COUNTY STREETS FROM THE L. A. COUNTY ROAD DEPT., 188 W. 5TH ST. AND MAKE A DEPOSIT WITH THE COUNTY ENGINEER, ROOM 324 PAM. AMERICAN BLDG., 224 1/2 BROADWAY, SUFFICIENT TO COVER THE COST OF CONSTRUCTION INSPECTION AND RECORDING PLANS.

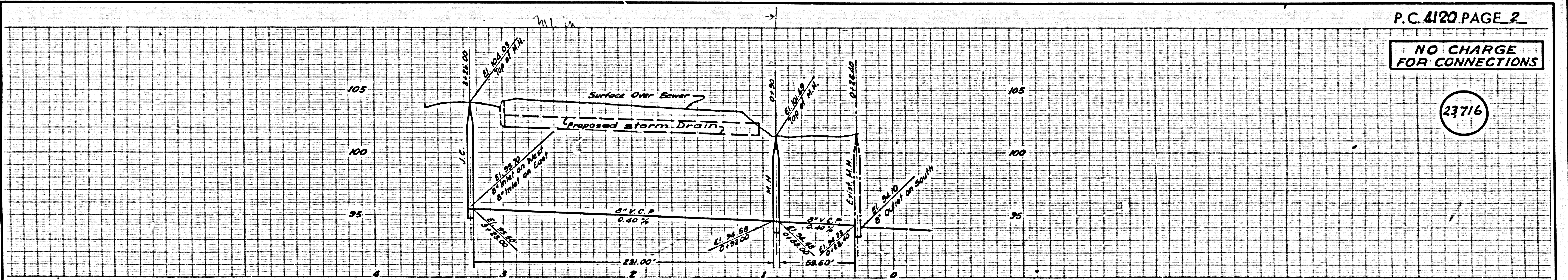
APPROVAL OF THIS PLAN BY THE COUNTY OF LOS ANGELES DOES NOT CONSTITUTE A REPRESENTATION AS TO THE ACCURACY OF THE LOCATION OF OR THE EXISTENCE OR NON-EXISTENCE OF ANY UNDERGROUND UTILITY PIPE, OR STRUCTURE WITHIN THE LIMITS OF THE PROJECT. THIS NOTE APPLIES TO ALL PAGES.

IF WORK IS TO BE DONE IN A STATE HIGHWAY, A PERMIT MUST BE OBTAINED FROM THE STATE OF CALIFORNIA, DIVISION OF HIGHWAYS, 120 SOUTH SPRING STREET.

COUNTY OF LOS ANGELES, CALIFORNIA

APPROVED, JOHN A. LAMBE, COUNTY ENGINEER
APPROVED, A. M. BAWN, CHIEF ENGINEER
BY A. P. Collins SANITATION ENGINEER
BY A. Posthumus OFFICE ENGINEER
CHECKED BY P. K. Kahan 8-27-56
OFFICE OF COUNTY ENGINEER, P.O. BOX 7960

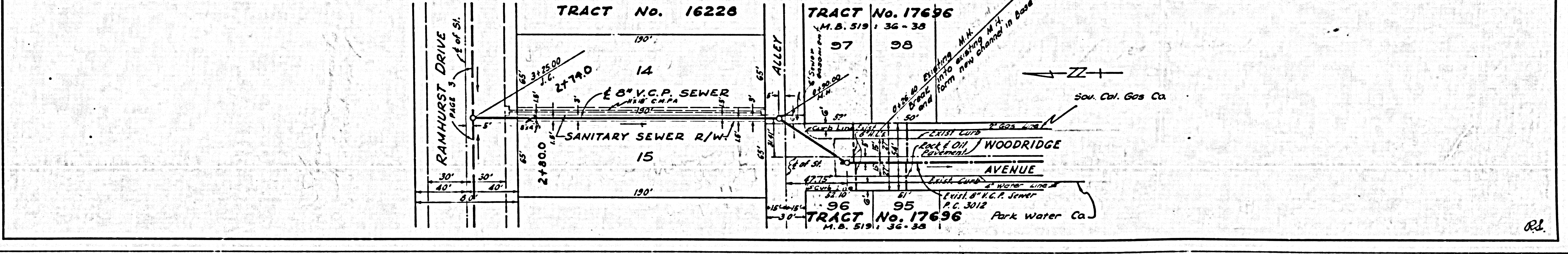
dated 12-3-56 W. L. Laren



P.C. 4120 PAGE 2

NO CHARGE
FOR CONNECTIONS

(23716)



OSIA 29

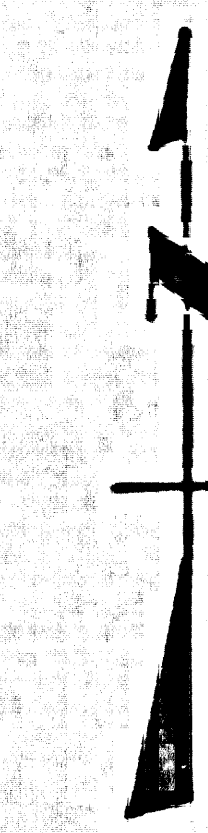
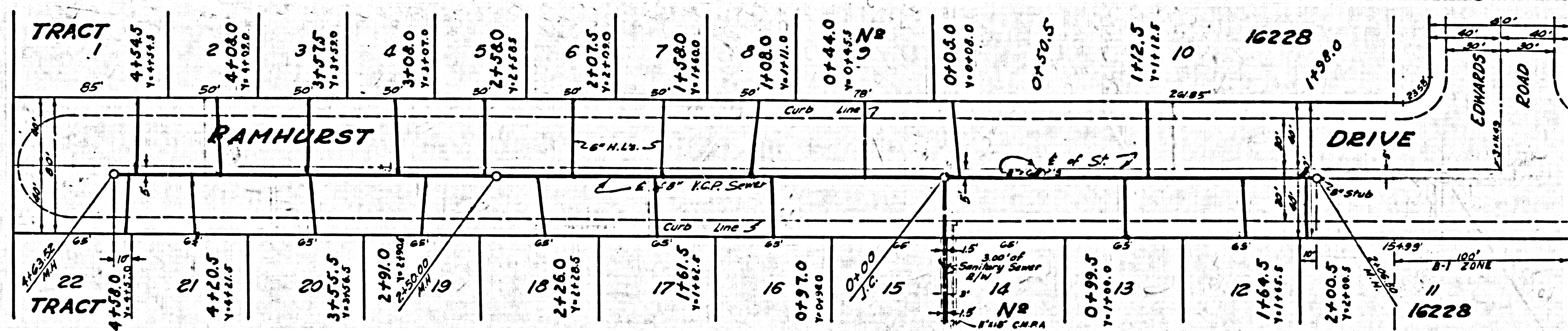
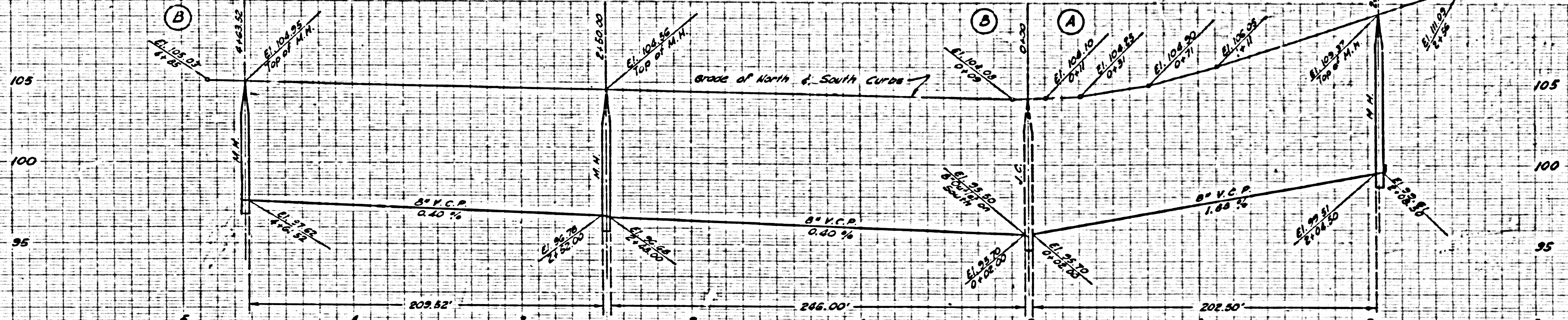
65.

TR. 16228

PC 4120

NO CHARGE FOR CONNECTIONS

23,717



PAGE

2

PC 4120 TR 16228

PC4150

al.