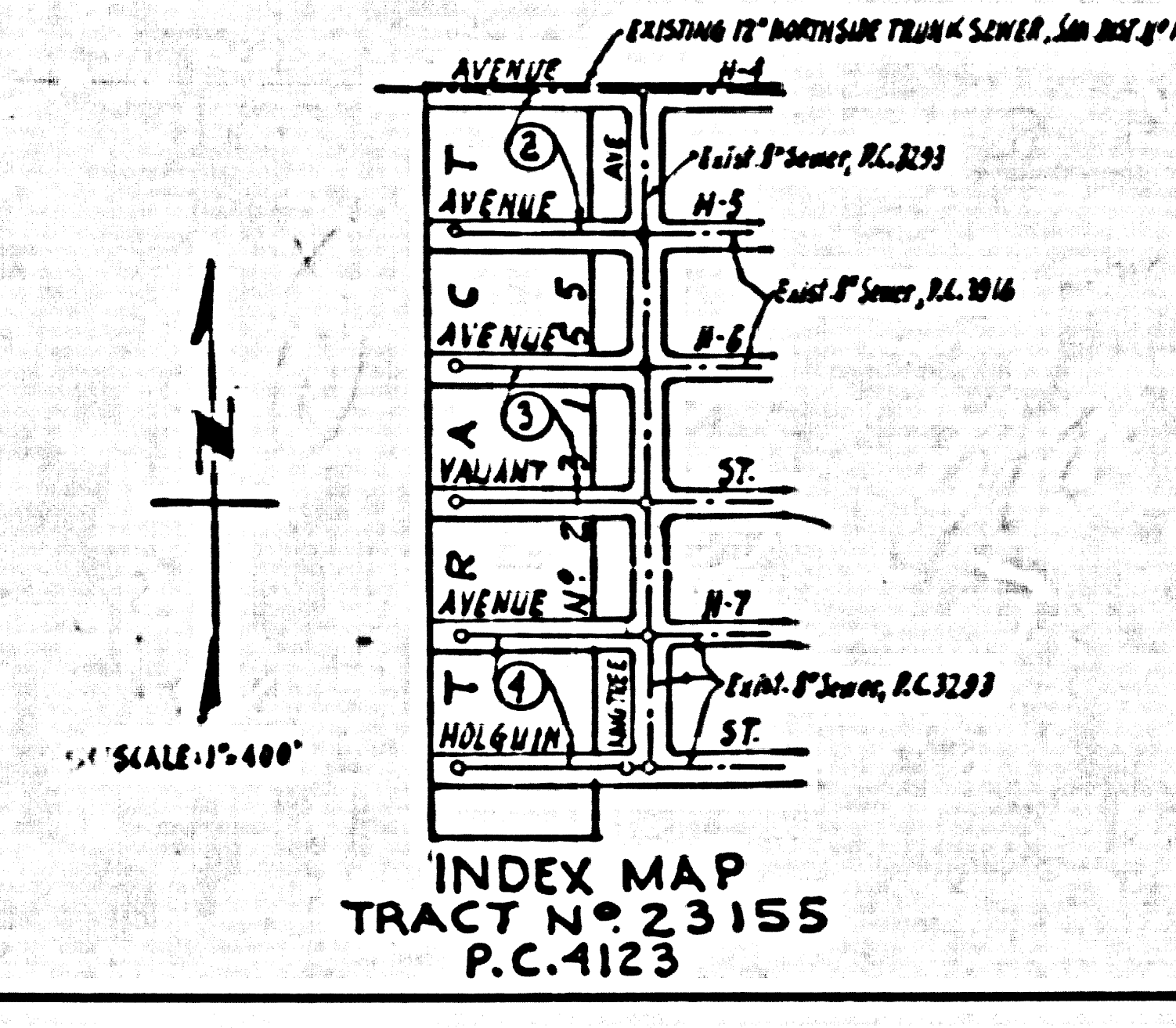


BENCHMARK: U.S.B.M. Z-56, 1932 Adj. (U.S. 2136)
 Elev. = 2333.76. Lancaster, about 1.2 miles N. of & on
 S.P.R.R. 867 poles S. of mile post #404. 2 poles N. of
 Culvert # 404-A, 100' W. of TRACT, 75' E. of and about 4'
 higher than pvt. Set in top of conc. post, a std. disk stamped: Z-56, 1932

NO CHARGE FOR CONNECTIONS
P.P. Johnson 7-6-56

LANCASTER BLDG. DIST. NO. 8

- NOTES:
- PROVIDE STAKES ON THE PROPERTY LINE OR PROPERTY LINES PRODUCED AT RIGHT ANGLES TO THE SEWER LINE AT THE CENTER LINE OF EACH MANHOLE.
 - NO REPRESENTATIVE OF THE COUNTY ENGINEER SHALL SURVEY OR LAYOUT ANY PORTION OF THE WORK.
 - THE OWNER OR HIS AUTHORIZED REPRESENTATIVE SHALL FURNISH THE COUNTY ENGINEER WITH GRADE SHEETS AND STATION FOR ALL HOUSE LATERALS AND Y BRANCHES AND SHALL PROVIDE STAKES FOR THEM AT THEIR PROPER LOCATIONS WITH STATIONING AND PLAINLY MARKED. ANY CHANGE IN LOCATION SHALL BE REQUESTED IN WRITING BY THE OWNER OR HIS REPRESENTATIVE.
 - NO REVISIONS SHALL BE MADE IN THESE PLANS WITHOUT THE APPROVAL OF THE COUNTY ENGINEER.
 - USE STANDARD MANHOLE FRAMES AND COVERS, S-A-117, EXCEPT AS NOTED.
 - USE STANDARD STRENGTH PIPE EXCEPT AS NOTED.
 - USE CEMENT MORTAR FOR ALL VITRIFIED CLAY PIPE JOINTS.
 - RESURFACE ALL TRENCH WITHIN PAVED AREA TO MEET L.A. COUNTY ROAD DEPT. OR CALIF. STATE HIGHWAY DEPT. REQUIREMENTS IN ACCORDANCE WITH PERMITS.
 - ENCASE POLE PART OF SEWER AT POINTS OF INTERFERENCE WITH POLES, S-A-119.
 - HOUSE LATERALS TO BE CONSTRUCTED WITH INVERTS 6" PROPERTY LINE - 5" FEET BELOW CURB GRADE EXCEPT AS NOTED.
 - ALL STRUCTURES SHALL BE BRICK SEWER STRUCTURE, S-A-104, EXCEPT AS NOTED.
 - FOR ALLOWABLE LEAKAGE TEST USE FORMULA NO. 1 SPEC'S, SEC. 25.
 - MANHOLE TOPS IN UNPAVED RIGHTS-OF-WAY TO BE 6" ABOVE FINISHED GRADE.
 - ALL PIPE JOINTS THAT ARE WITHIN 20 FEET OF ANY PROPERTY LINE WITH 4" OF CEMENT MORTAR.
 - THE PRIVATE ENGINEER IS TO FURNISH THE HOUSE LATERAL DEPTH AT THE PROPERTY LINE BELOW THE TOP OF CURB ELEVATION FOR EACH HOUSE LATERAL, ON THE GRADE SHEET.
 - THE CONTRACTOR SHALL ADJUST TOPS OF ALL MANHOLES IN TRACT, WHEN PAVING IS COMPLETED.



PROFILE ALIGNMENT AND GRADE OF P.C. 4123
 SANITARY SEWERS PAGE 1
 TO BE CONSTRUCTED IN

TRACT NO. 23155 (24,192)
 (4)

PRIVATE CONTRACT NO. 4123
 W.S. 71

- 2 SHEETS, - 4 PAGES
 SCALE: 1" = 10' HORIZONTAL, 1" = 4' VERTICAL
 AUGUST, 1956

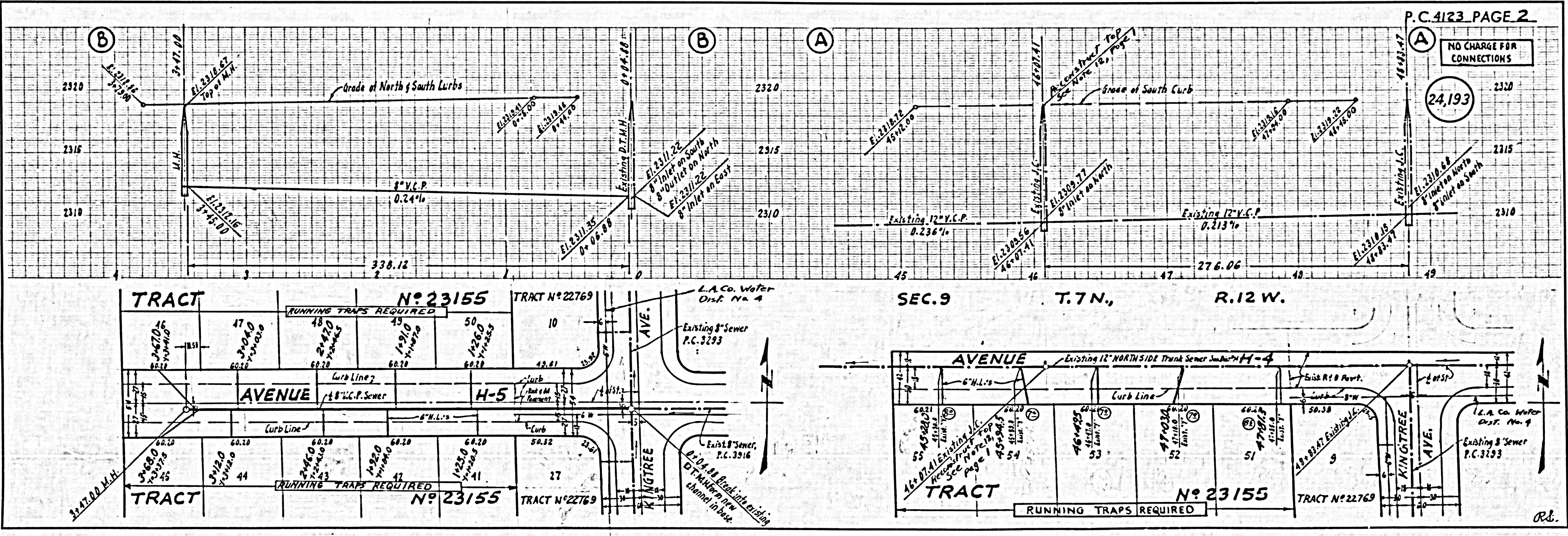
PREPARED IN THE OFFICES OF
ROSENTHAL ENGINEERING COMPANY
 BY *A.S. Rosenthal*
 REG. C. E. NO. 8818

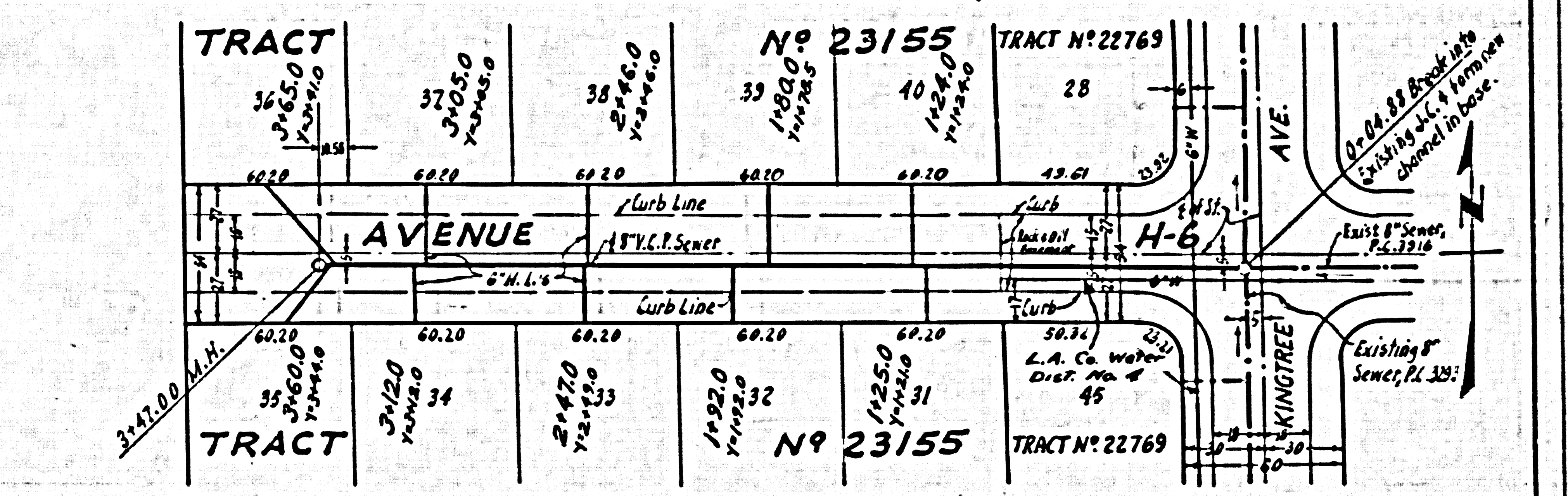
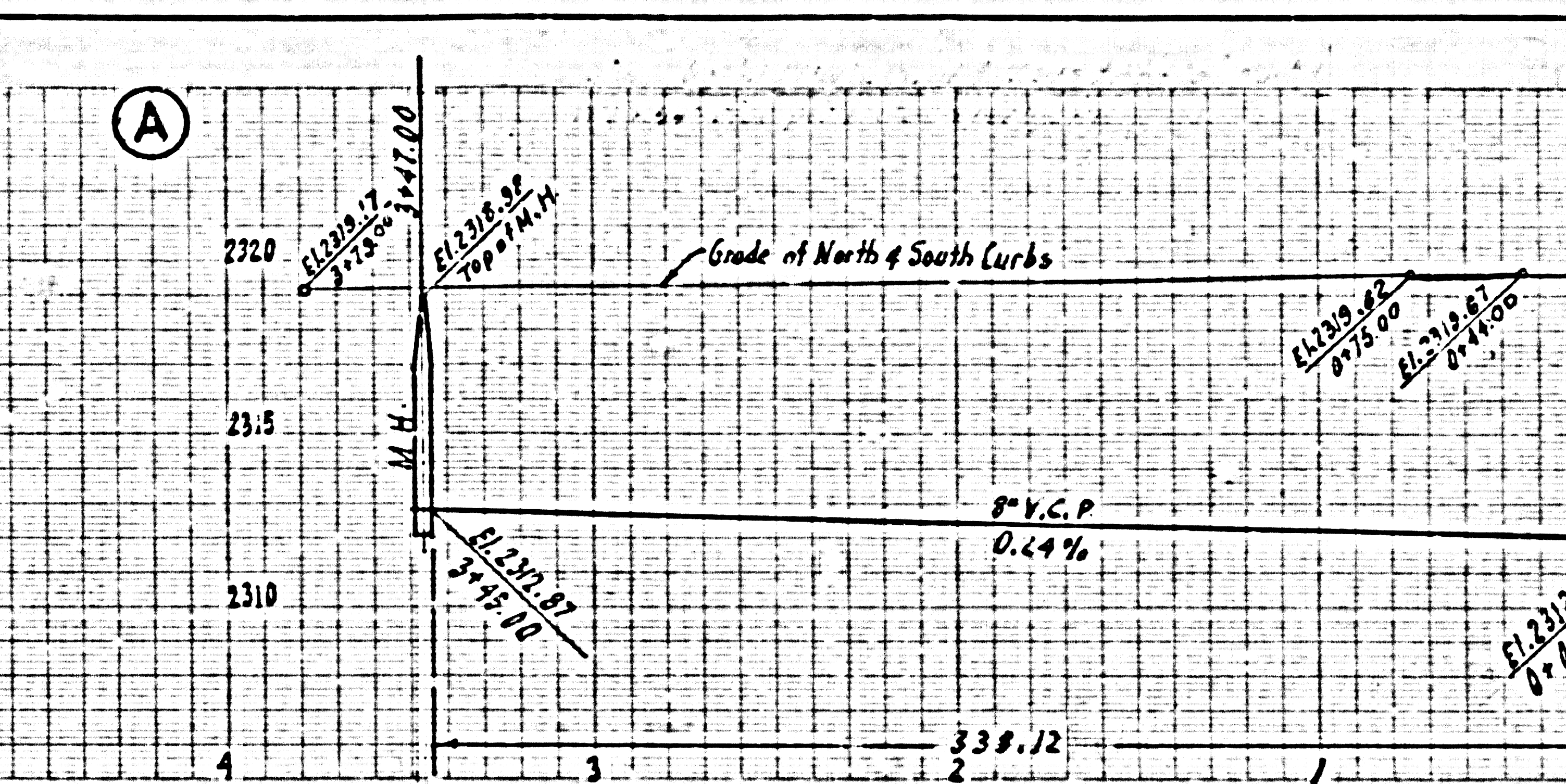
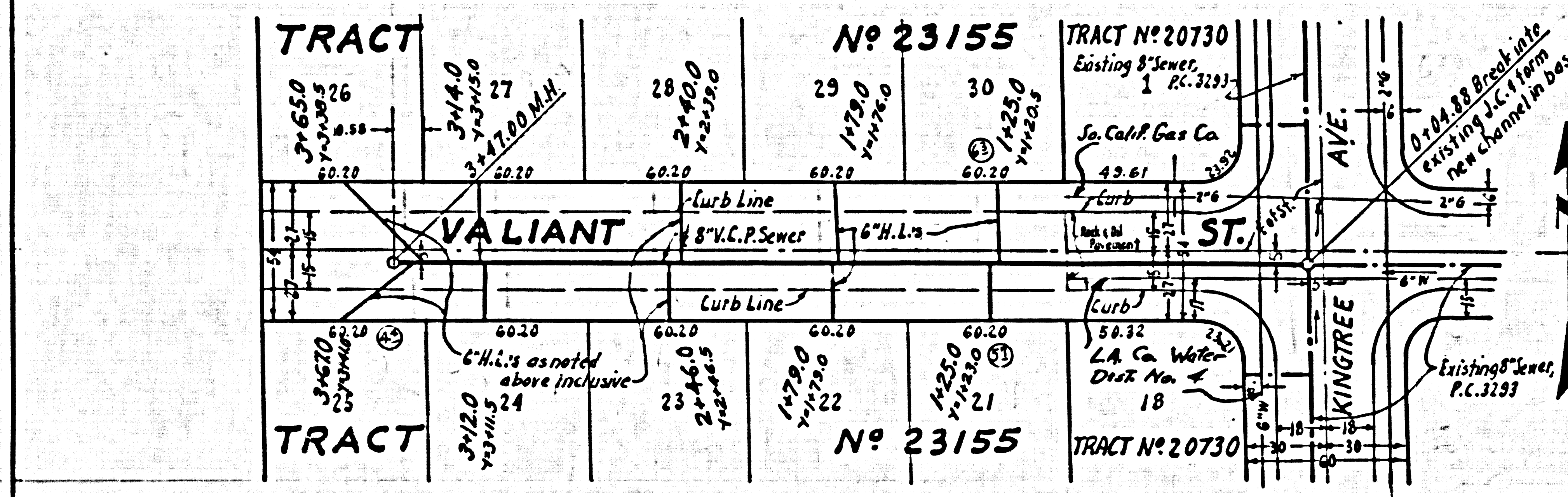
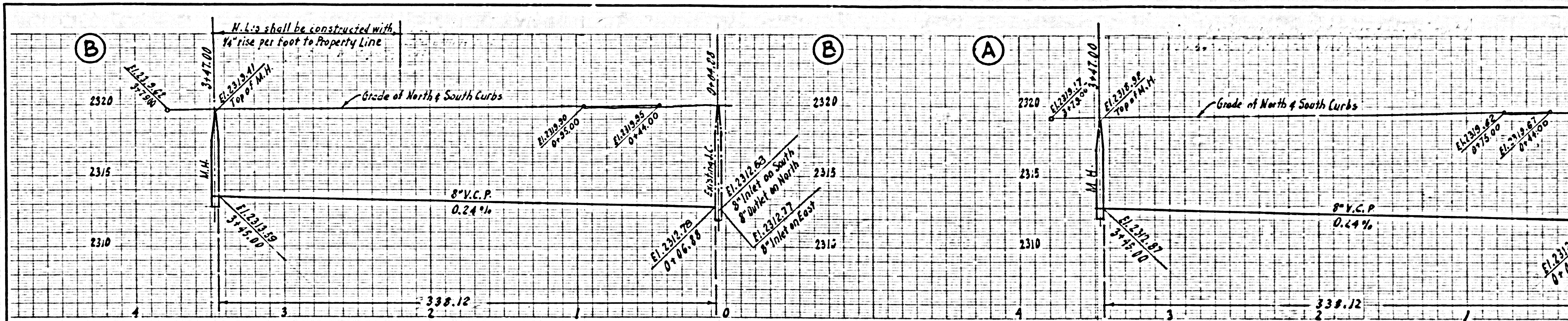
FOR LEGEND SEE PLAN NO. S-A-64

GRADES TO WHICH THIS IMPROVEMENT IS TO BE CONSTRUCTED ARE SHOWN ON PLANS AND PROFILES ON THE POINTS FOR TOP OF CURB, CENTER LINE OF STREETS, OR CENTER LINE OF ALLEYS AND SHOWN BY CIRCLES ON PROFILES. AT ALL POINTS BETWEEN DESIGNATED POINTS THE GRADE SHALL BE ESTABLISHED SO AS TO CONFORM TO A STRAIGHT LINE DRAWN BETWEEN SAID DESIGNATED POINTS.
 ELEVATIONS ARE IN FEET ABOVE U.S.C.G.S. SEA LEVEL DATUM OF 1929.
 THIS DRAWING AND THE DATA HEREON ARE HEREBY MADE A PART OF THE SPECIFICATIONS.
 BEFORE WORK CAN BE STARTED, THE CONTRACTOR MUST OBTAIN A PERMIT TO EXCAVATE IN COUNTY STREETS FROM THE L.A. COUNTY ROAD DEPT. AND MAKE A DEPOSIT WITH THE COUNTY ENGINEER, ROOM 324 PAM AMERICAN BUILDING, 215 SO. BROADWAY, SUFFICIENT TO COVER THE COST OF CONSTRUCTION INSPECTION AND RECORD PLANS.
 APPROVAL OF THIS PLAN BY THE COUNTY OF LOS ANGELES DOES NOT CONSTITUTE A REPRESENTATION AS TO THE ACCURACY OF THE LOCATION OF OR THE EXISTENCE OR NON-EXISTENCE OF ANY UNDERGROUND UTILITY PIPE, OR STRUCTURE WITHIN THE LIMITS OF THE PROJECT. THIS NOTE APPLIES TO ALL PAGES.
 IF WORK IS TO BE DONE ON A STATE HIGHWAY, A PERMIT MUST BE OBTAINED FROM THE STATE OF CALIFORNIA, DIVISION OF HIGHWAYS, 126 SOUTH SPRING STREET.

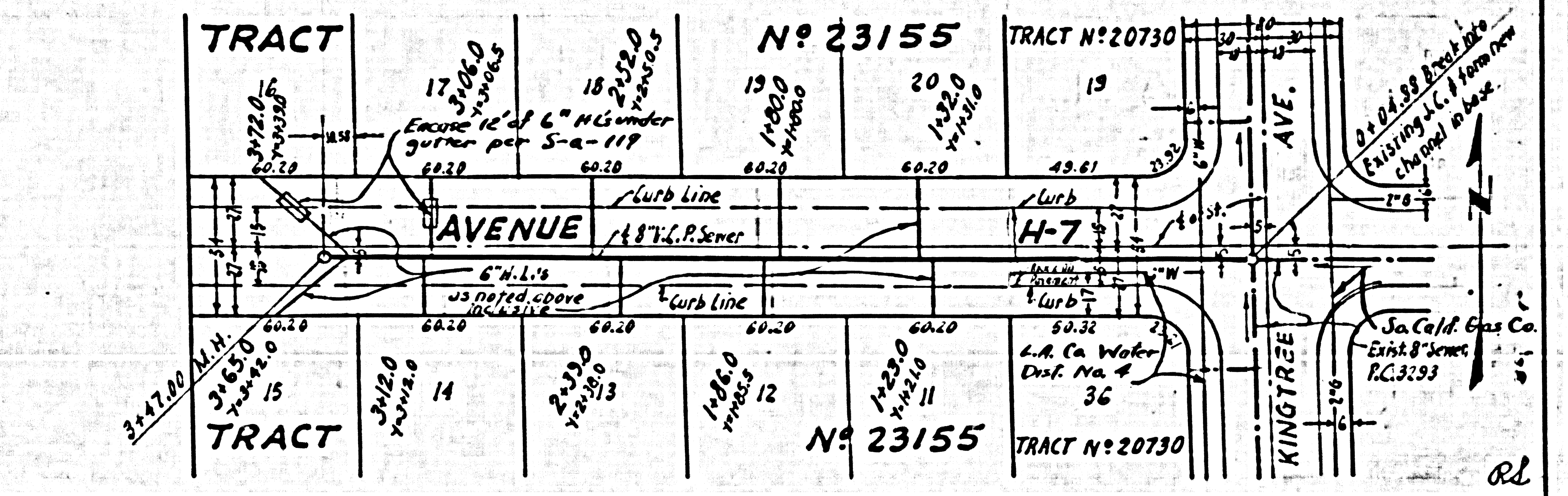
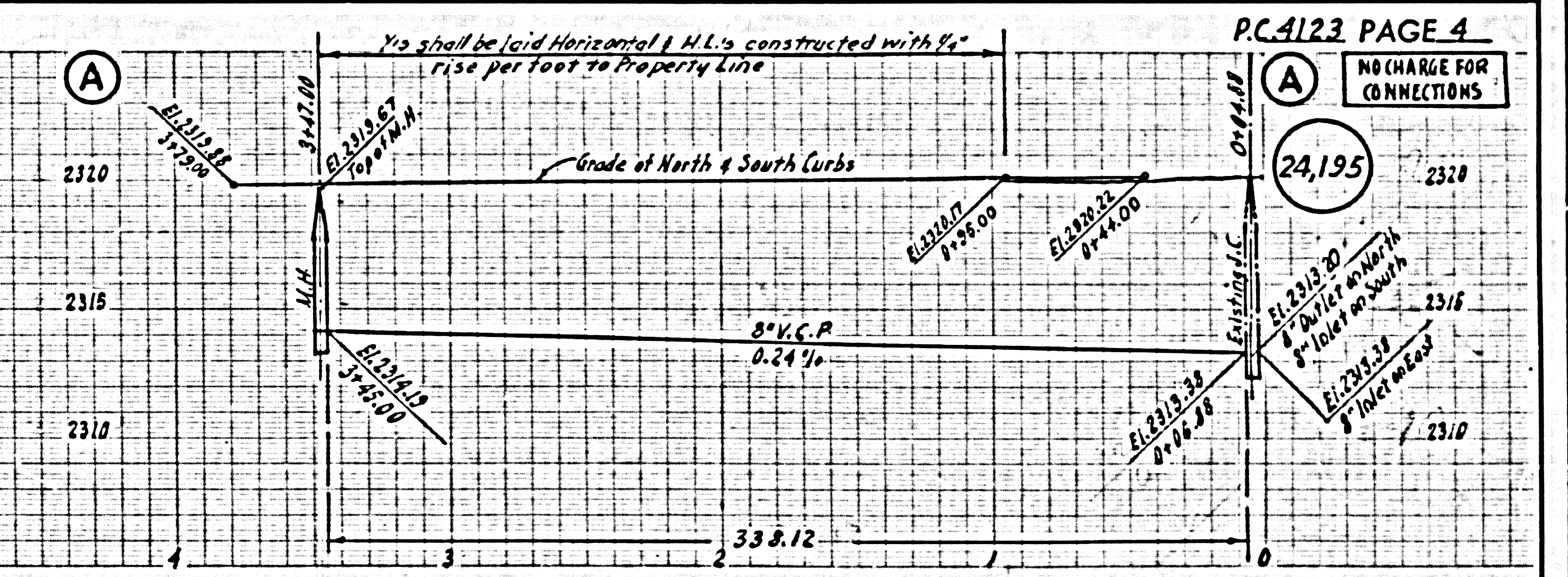
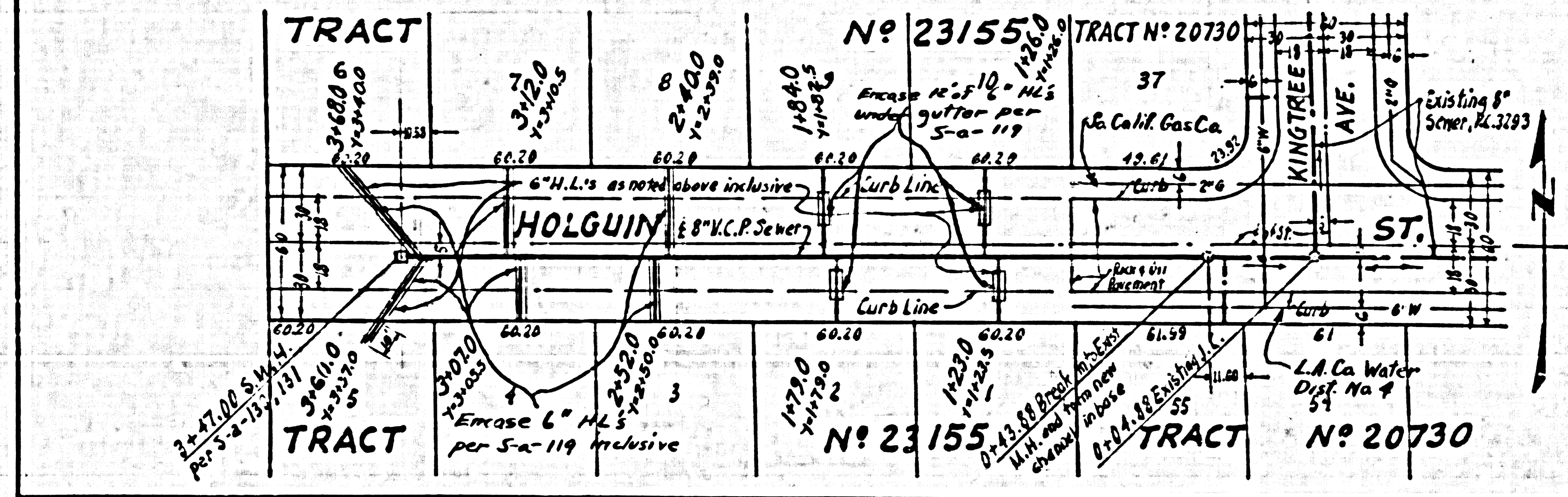
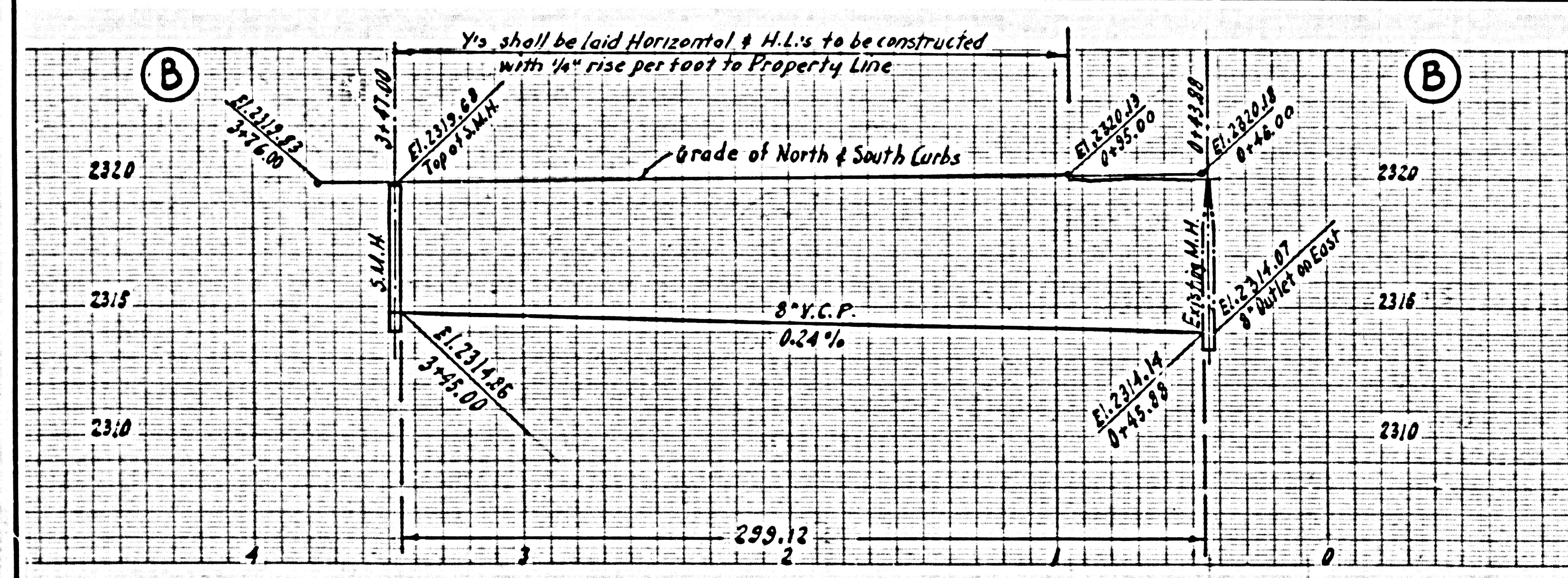
COUNTY OF LOS ANGELES, CALIFORNIA

APPROVED, JOHN A. LAMLE, COUNTY ENGINEER
 APPROVED, A. M. RAWL, CHIEF ENGINEER
 BY *A.P. Collins* SANITATION ENGINEER
 BY *A. M. Rawl* OFFICE ENGINEER
 CHECKED BY *P.P. Johnson 9-6-56*
 OFFICE OF COUNTY ENGINEER, REG. C. E. NO. 7869





P.C. 4123 PAGE 3
NO CHARGE FOR CONNECTIONS



P.C. 4123 PAGE 4
NO CHARGE FOR CONNECTIONS

RL