

LENNOX BLDG. DIST. NO. 7

PROFILE ALIGNMENT AND GRADE OF **P.C. 4124**  
**SANITARY SEWERS** PAGE **1**  
 TO BE CONSTRUCTED IN  
**R/W WEST OF**  
**SANTA FE AVE.** (24463)

PRIVATE CONTRACT NO. 4124  
 W.S. 32

1 SHEETS, 2 PAGES

SCALE: 1" = 40' AUGUST, 1956

PREPARED IN THE OFFICES OF

QUINTON ENGINEERS LTD.

FOR L.S. NO. SEE PLAN NO. S-A-64

BENCH MARK ELEV. 54.161  
 S.M. NO. 9 (87-391) BRASS PLATE IN  
 CONCRETE MONUMENT 24" DEEP, 8-1/2"  
 EAST OF FIRST P.L. ON SANTA FE AVE.,  
 SOUTH OF ARTERIA ST.

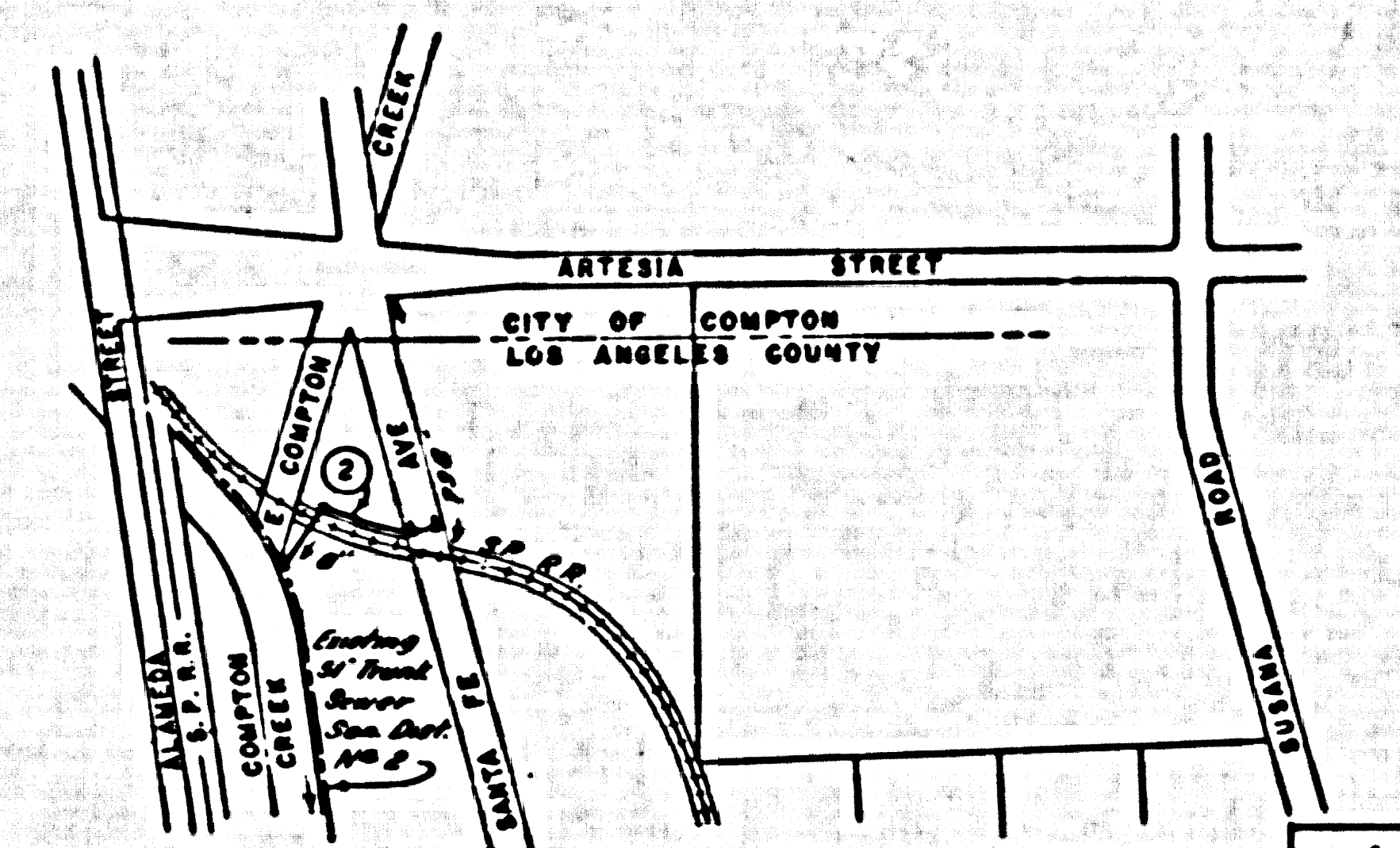
INDEX TABLE	
SHEETS	PAGES
1	2

"NO CHARGE FOR CONNECTIONS"  
*SK Data 11-27*

ISSUE NO PERMITS  
 UNTIL EASEMENT  
 IS CLEARED -  
 CALL MAIN OFFICE

Before breaking into any existing structure  
 and before final acceptance of this work,  
 County Sanitation District should be notified  
 in order that required inspection may be made.

- NOTES:  
 PROVIDE STAKES ON THE PROPERTY LINE OR PROPERTY LINES PERPENDICULAR AT RIGHT ANGLES TO THE SEWER LINE AT THE CENTER LINE OF EACH MANHOLE.  
 NO REPRESENTATIVE OF THE COUNTY ENGINEER SHALL SURVEY OR LAYOUT ANY PORTION OF THE WORK.  
 THE OFFICE OF THE AUTHORIZING REPRESENTATIVE SHALL FURNISH THE COUNTY ENGINEER WITH 60-25 SHEETS AND STATION FOR ALL HOUSE LATERALS AND Y BRANCHES AND SHALL PROVIDE STAKES FOR THEM AT THEIR PROPER LOCATIONS WITH STATIONING PLANNED MARKS. ANY CHANGE IN LOCATION SHALL BE REQUESTED IN WRITING BY THE OWNER OR HIS REPRESENTATIVE.  
 NO REVISIONS SHALL BE MADE IN THESE PLANS WITHOUT THE APPROVAL OF THE COUNTY ENGINEER.
- USE STANDARD 84" RIGID FRAMES AND COVERS, S.A. 117, EXCEPT AS NOTED.
  - USE STANDARD STRENGTH PIPE EXCEPT AS NOTED.
  - USE CEMENT MORTAR FOR ALL VITRIFIED CLAY PIPE JOINTS.
  - RESURFACE ALL TRENCH WITHIN PAVED AREA TO MEET L.A. COUNTY ROAD DEPT. OR CALIF. STATE HIGHWAY DEPT. REQUIREMENTS IN ACCORDANCE WITH MANUALS.
  - SHOULDER ROAD SIDE OF SEWER AS FURNISHED OR INTERFERED WITH HOLE, S.A. 119.
  - HOUSE LATERALS TO BE CONSTRUCTED WITH INVERTS AS INDICATED UNLESS OTHERWISE SHOWN EXCEPT AS NOTED.
  - ALL STRUCTURES SHALL BE BRICK SEWER STRUCTURES, S.A. 104, EXCEPT AS NOTED.
  - FOR ALLOWABLE LEAKAGE TEST USE FORMULA NO. 1, S.P.C.E. SEC. 84.
  - MANHOLE TOPS IN UNIMPROVED RIGHTS-OF-WAY TO BE 4" ABOVE FINISHED GRADE.



INDEX MAP  
 SCALE 1"=600'  
 A PORTION OF RANCHO SAN PEDRO INDUSTRIAL AREA  
 P.C. 4124

APPROVED BY:  
*Arthur Pickett*  
 INDUSTRIAL WASTE DIV.

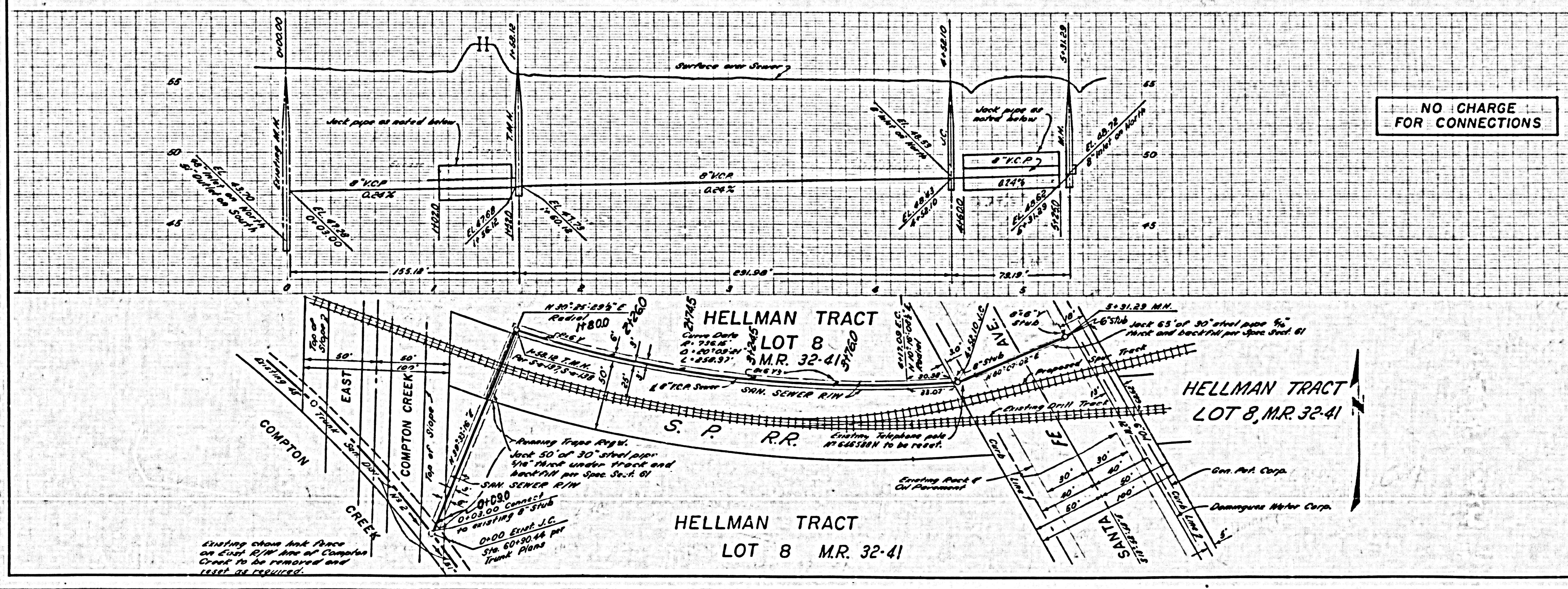
NOTE:  
 GRADES TO WHICH THIS IMPROVEMENT IS TO BE CONSTRUCTED ARE SHOWN ON PLANS AND PROFILES. GRADE POINTS FOR 50' OF CURB, CENTER LINE OF STREETS, OR CENTER LINE OF ALLEYS ARE SHOWN BY CIRCLES ON PROFILES. ALL POINTS BETWEEN DESIGNATED POINTS THE GRADE SHALL BE ESTABLISHED SO AS TO CONFORM TO A STRAIGHT LINE DRAWN BETWEEN SAID DESIGNATED POINTS.  
 ELEVATIONS ARE IN FEET ABOVE U.S.C. & G.S. MEAN SEA LEVEL DATUM OF 1929.  
 THE SEWERING AND THE DATA HEREON ARE HEREBY MADE A PART OF THE SPECIFICATIONS.  
 WORK SHALL BE CONSTRUCTED ACCORDING TO SPECIFICATIONS ON FILE IN THE OFFICE OF THE COUNTY ENGINEER AND SHALL BE PROSECUTED ONLY IN THE PRESENCE OF THE COUNTY ENGINEER.  
 BEFORE WORK CAN BE STARTED, THE CONTRACTOR MUST OBTAIN A PERMIT TO RECLAIM BY COUNTY STREETS FROM THE L.A. COUNTY ROAD DEPT., 120 W. 3RD ST. AND MAKE A REPORT WITH THE COUNTY ENGINEER, ROOM 324 FARM LANSING AVENUE, 524 SO. BROADWAY SUBJECT TO THE SCALE OF CONSTRUCTION INSPECTION AND RECORD PLANS.  
 APPROVAL OF THIS PLAN BY THE COUNTY OF LOS ANGELES DOES NOT CONSTITUTE A REPRESENTATION AS TO THE ACCURACY OF THE LOCATION OR THE EXISTENCE OR NON-EXISTENCE OF ANY UNDERGROUND UTILITY PIPE, OR STRUCTURE WITHIN THE LIMITS OF THIS PROJECT. THIS NOTE APPLIES TO ALL PAGES.  
 IF WORK IS TO BE DONE IN A STATE HIGHWAY, A PERMIT MUST BE OBTAINED FROM THE STATE OF CALIFORNIA, DIVISION OF HIGHWAYS, 138 SOUTH SPRING STREET.

COUNTY OF LOS ANGELES, CALIFORNIA

APPROVED, JOHN A. LAMBE, COUNTY ENGINEER  
 APPROVED, A. M. BAWIN, CHIEF ENGINEER  
 CO. SAN. DIST. NO. 1

BY *A. P. Williams* SANITATION ENGINEER BY *A. M. Bawin* CHIEF ENGINEER  
 CHECKED BY *P. B. Kuhn* 1-18-57 OFFICE OF COUNTY ENGINEER, 100 S. E. NO. 7860

P.C. 4124 PAGE 2



NO CHARGE FOR CONNECTIONS

(24464)

DC 4154

Existing chain link fence on East R/W line of Compton Creek to be removed and reset as required.

Running Trench Reg'd. Jack 50' or 30' steel pipe 6" 5/8" Mandrel length 100' and hand down per Spec. Sect. 61

HELLMAN TRACT  
 LOT 8 M.R. 32-41

HELLMAN TRACT  
 LOT 8, M.R. 32-41

2-5-54 5019M