

LANCASTER BLDG. DIST. NO. 8

PROFILE ALIGNMENT AND GRADE OF
SANITARY SEWERS PAGE 1
 TO BE CONSTRUCTED IN

TRACT NO. 22939 (24,201)
 M.B. 602-59-61 (8)

PRIVATE CONTRACT NO. 4126
 W.S. 70

4 SHEETS, 8 PAGES

SCALE: 1" = 40' JULY, 1956
 PREPARED IN THE OFFICES OF

CONLEY ENGINEERING COMPANY
 By: *Hugh Conley*
 REG. C. E. NO. 5468

FOR LEGEND SEE PLAN NO. S-A-64

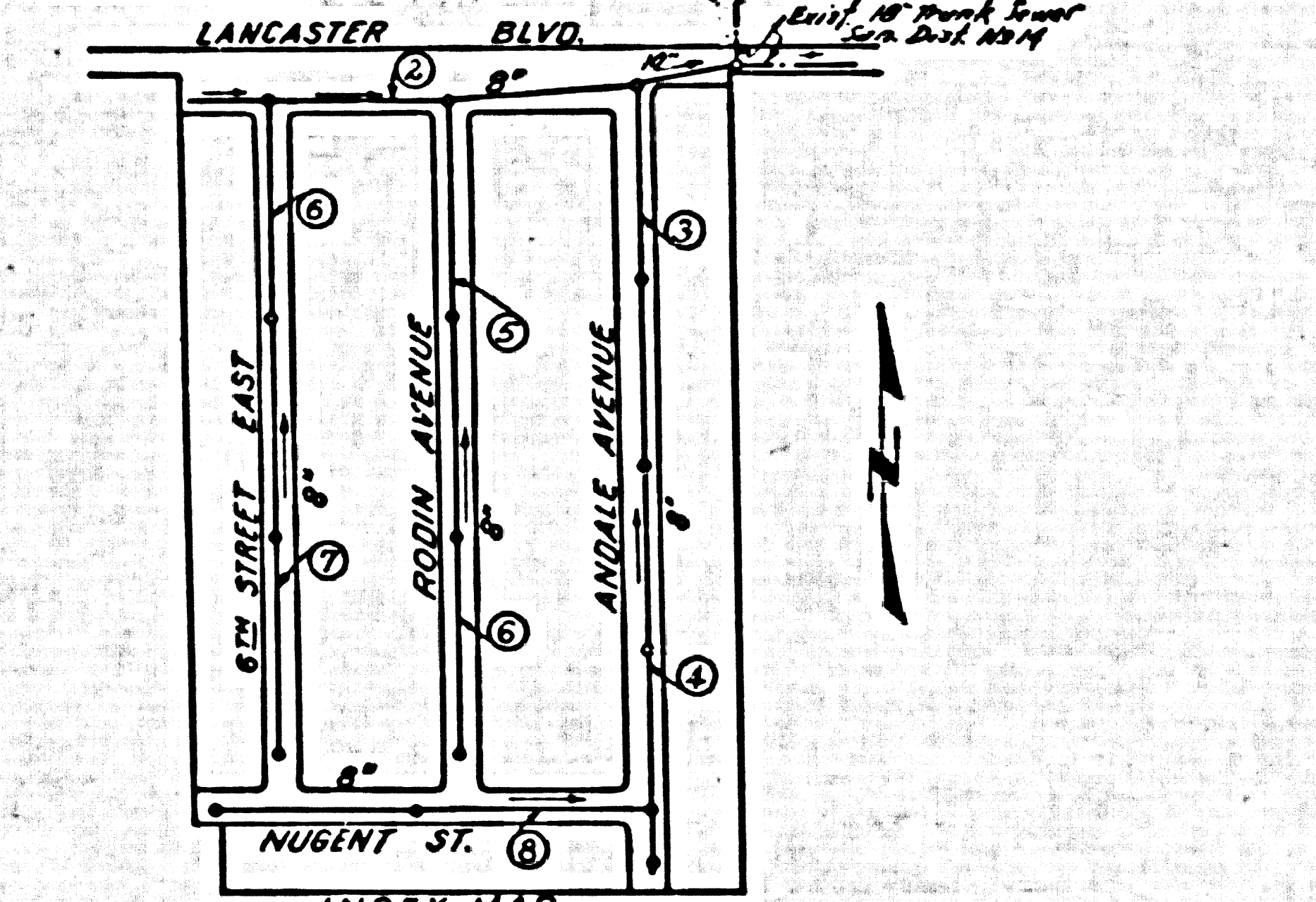
B.M.-S.L. 61, S.L. B.M.'s, PG. 30, 2379.667 ad, 1956
 Ft. Br. Cap in Concrete Monument 20"
 deep @ E Intersection of Lancaster Blvd.
 and 10th Street East

INDEX TABLE	
SHEETS	PAGES
4	8

CONNECTION CHARGES
 AS INDICATED
38 Under 9-11-56

Before breaking into any existing street,
 and before final acceptance of this work,
 County Sanitation District should be notified
 in order that required inspection may be made.

- NOTES:**
- PROVIDE STAKES ON THE PROPERTY LINE OR PROPERTY LINES PRODUCED AT RIGHT ANGLES TO THE SEWER LINE AT THE CENTER LINE OF EACH MANHOLE.
 - NO REPRESENTATIVE OF THE COUNTY ENGINEER WILL SURVEY OR LAYOUT ANY PORTION OF THE WORK.
 - THE OWNER OR HIS AUTHORIZED REPRESENTATIVE SHALL FURNISH THE COUNTY ENGINEER WITH GRADE SHEETS AND STATIONING FOR ALL HOUSE LATERALS AND Y BRANCHES AND SHALL PROVIDE STAKES FOR THEM AT THEIR PROPER LOCATIONS WITH STATIONING PLAINLY MARKED. ANY CHANGE IN LOCATION SHALL BE REQUESTED IN WRITING BY THE OWNER OR HIS REPRESENTATIVE.
 - NO REVISIONS SHALL BE MADE IN THESE PLANS WITHOUT THE APPROVAL OF THE COUNTY ENGINEER.
 - USE STANDARD MANHOLE FRAMES AND COVERS, S.A.-117, EXCEPT AS NOTED.
 - USE STANDARD STRENGTH PIPE EXCEPT AS NOTED.
 - USE CEMENT MORTAR FOR ALL VITRIFIED CLAY PIPE JOINTS.
 - RESURFACE ALL TRENCH WITHIN PAVED AREA TO MEET L. A. COUNTY ROAD DEPT. OR CALIF. STATE HIGHWAY DEPT. REQUIREMENTS IN ACCORDANCE WITH PERMITS.
 - INDICATE FOUR FEET OF SEWER AT POINTS OF INTERFERENCE WITH POLES, S.A.-119.
 - HOUSE LATERALS TO BE CONSTRUCTED WITH INVERTS AT PROPERTY LINE 8' BELOW CURB GRADE EXCEPT AS NOTED.
 - ALL STRUCTS. SHALL BE BRICK SEWER STRUCTURES, S.A.-194, EXCEPT AS NOTED.
 - FOR ALLOWABLE LEAKAGE TEST USE FORMULA NO. 1, SPEC. SEC. 54.
 - MANHOLE TOPS IN UNIMPROVED RIGHTS-OF-WAY TO BE 6" ABOVE FINISHED GRADE.
 - Shall not pass joints with a downward separator that are within 20 feet of all property lines or in Sanitary Sewer Off's.
 - The Private Eng'r. to furnish Manhole Lateral Depth of property line below top of curb elevation for each house lateral on the grade sheet.



INDEX MAP
 SCALE: 1" = 300'
 TRACT NO. 22939
 P.C. 4126

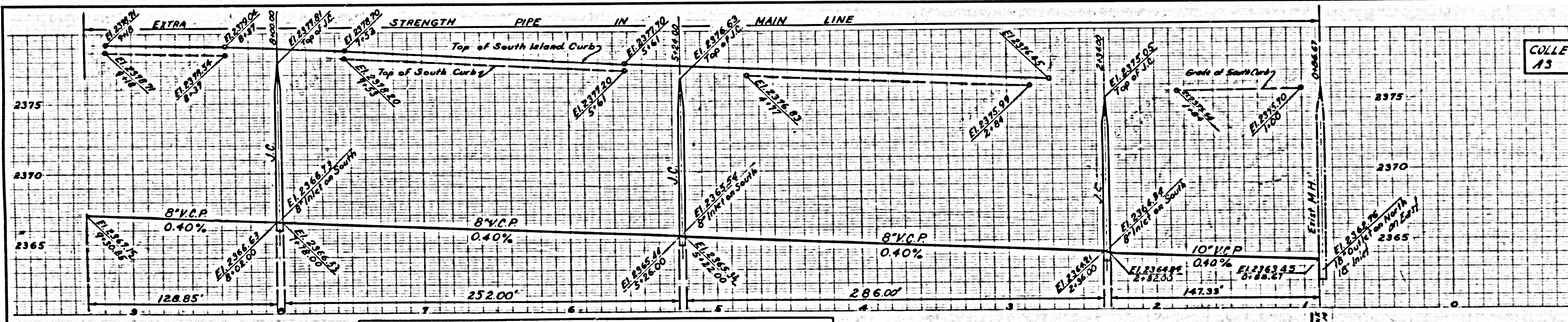
NOTE:
 GRADES TO WHICH THIS IMPROVEMENT IS TO BE CONSTRUCTED ARE SHOWN ON PLANS AND PROFILES. GRADE POINTS FOR TOP OF CURB, CENTER LINE OF STREETS, OR CENTER LINE OF ALLEYS ARE SHOWN BY CIRCLES ON PROFILES AT ALL POINTS BETWEEN DESIGNATED POINTS THE GRADE SHALL BE ESTABLISHED SO AS TO CONFORM TO A STRAIGHT LINE DRAWN BETWEEN SAID DESIGNATED POINTS.
 ELEVATIONS ARE IN FEET ABOVE U.S.C. & G.S. MEAN SEA LEVEL UNLESS OTHERWISE NOTED.
 THIS DRAWING AND THE DATA HEREON ARE HEREBY MADE A PART OF THE SPECIFICATIONS.
 WORK SHALL BE CONSTRUCTED ACCORDING TO SPECIFICATIONS ON FILE IN THE OFFICE OF THE COUNTY ENGINEER AND SHALL BE PROSECUTED ONLY IN THE PRESENCE OF THE COUNTY ENGINEER.
 BEFORE WORK CAN BE STARTED, THE CONTRACTOR MUST OBTAIN A PERMIT TO EXCAVATE IN COUNTY STREETS FROM THE L. A. COUNTY ROAD DEPT. THE 10' BY 10' SIGN SHALL BE DISPLAYED WITH THE COUNTY ENGINEER, ROOM 224 MAIN AMERICAN BUILDING, 215 SO BROADWAY, SUFFICIENT TO COVER THE COST OF CONSTRUCTION INSPECTION AND RECORD PLANS.
 APPROVAL OF THIS PLAN BY THE COUNTY OF LOS ANGELES DOES NOT CONSTITUTE A REPRESENTATION AS TO THE ACCURACY OF THE LOCATION OF OR THE EXISTENCE OR NON-EXISTENCE OF ANY UNDERGROUND UTILITY PIPE, OR STRUCTURE WITHIN THE LIMITS OF THIS PROJECT. THIS NOTE APPLIES TO ALL PAGES.
 IF WORK IS TO BE DONE IN A STATE HIGHWAY, A PERMIT MUST BE OBTAINED FROM THE STATE OF CALIFORNIA, DIVISION OF HIGHWAYS, 120 SOUTH SPRING STREET.

COUNTY OF LOS ANGELES, CALIFORNIA
 APPROVED, JOHN A. LAMBE, COUNTY ENGINEER
 APPROVED, A. M. RAWN, CHIEF ENGINEER
 BY: *A. P. Collins* SANITATION ENGINEER
 BY: *G. C. Williams* OFFICE ENGINEER
 CHECKED BY: *R. K. Johnson* 9-17-56
 OFFICE OF COUNTY ENGINEER, REG. C. E. NO. 7860

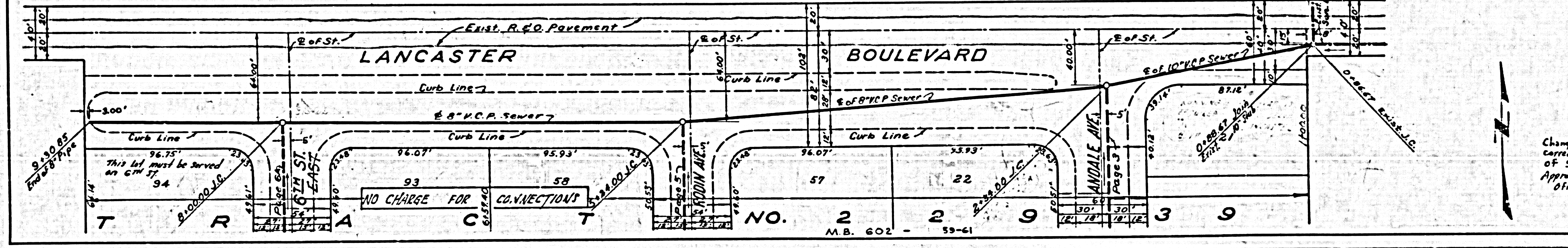
P.C. 4126 PAGE 2

COLLECT CHARGES
 AS INDICATED

(24,202)



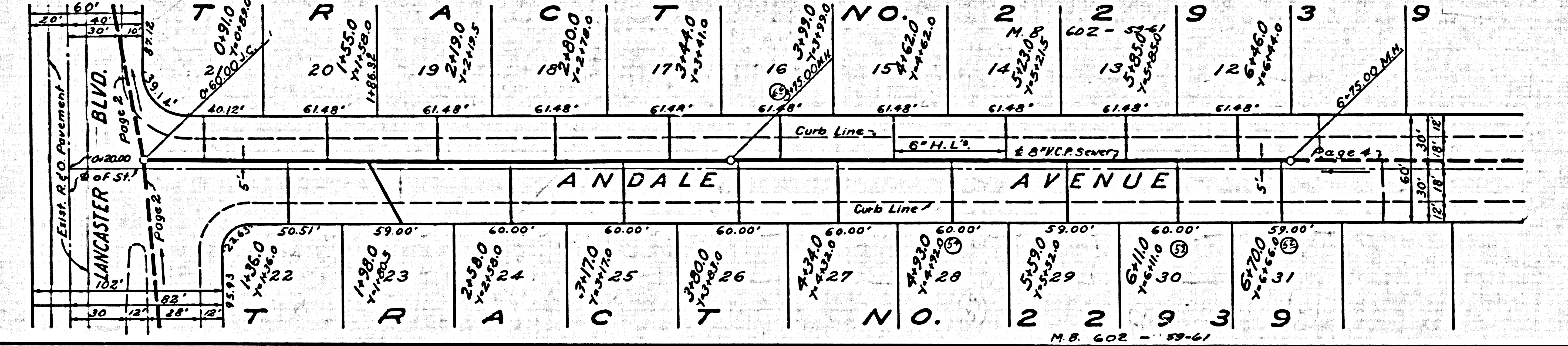
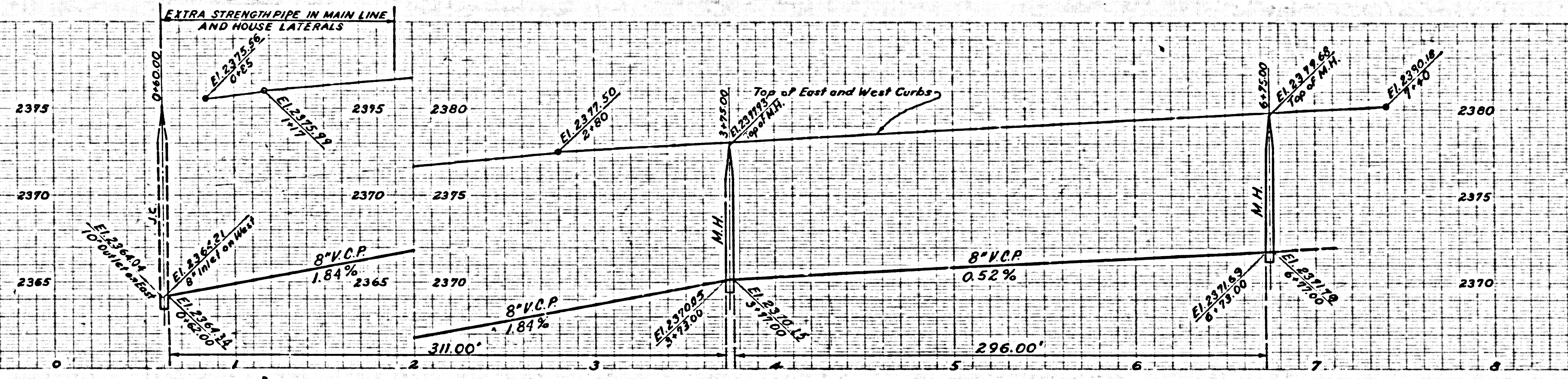
DO NOT ISSUE PERMITS - MUST BE DOUBLE LINED.



Change of Plan: Trunk Sewer location corrected 8' E. of Tract Line instead of 5' E.
 Approved: *R. K. Johnson* 10-10-56
 Office of County Engineer - P.C.E. 7860

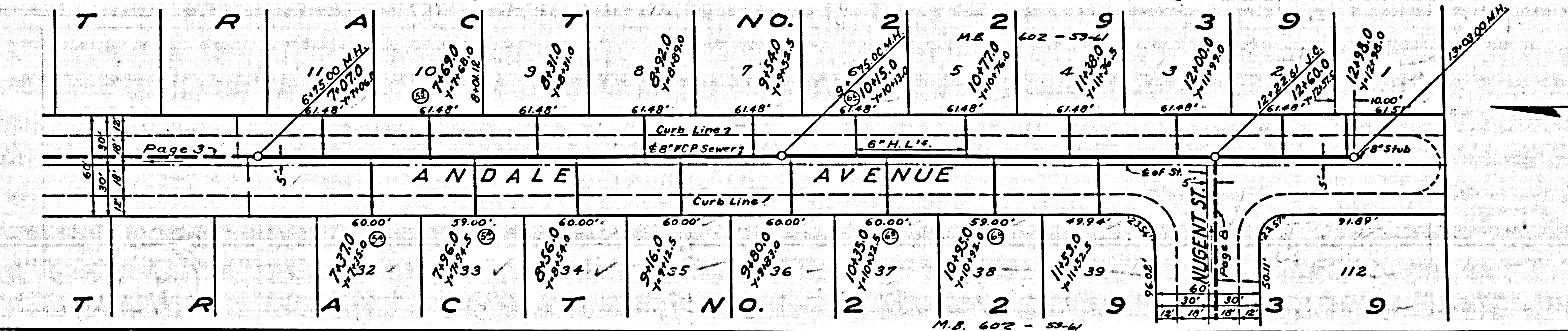
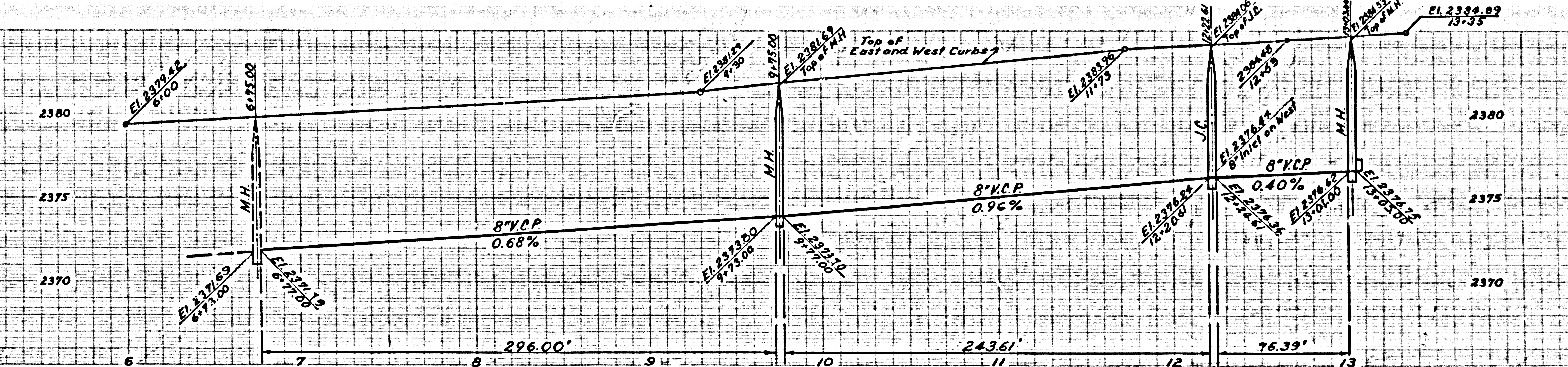
NO CHARGE FOR CONNECTIONS

24,203



NO CHARGE FOR CONNECTIONS

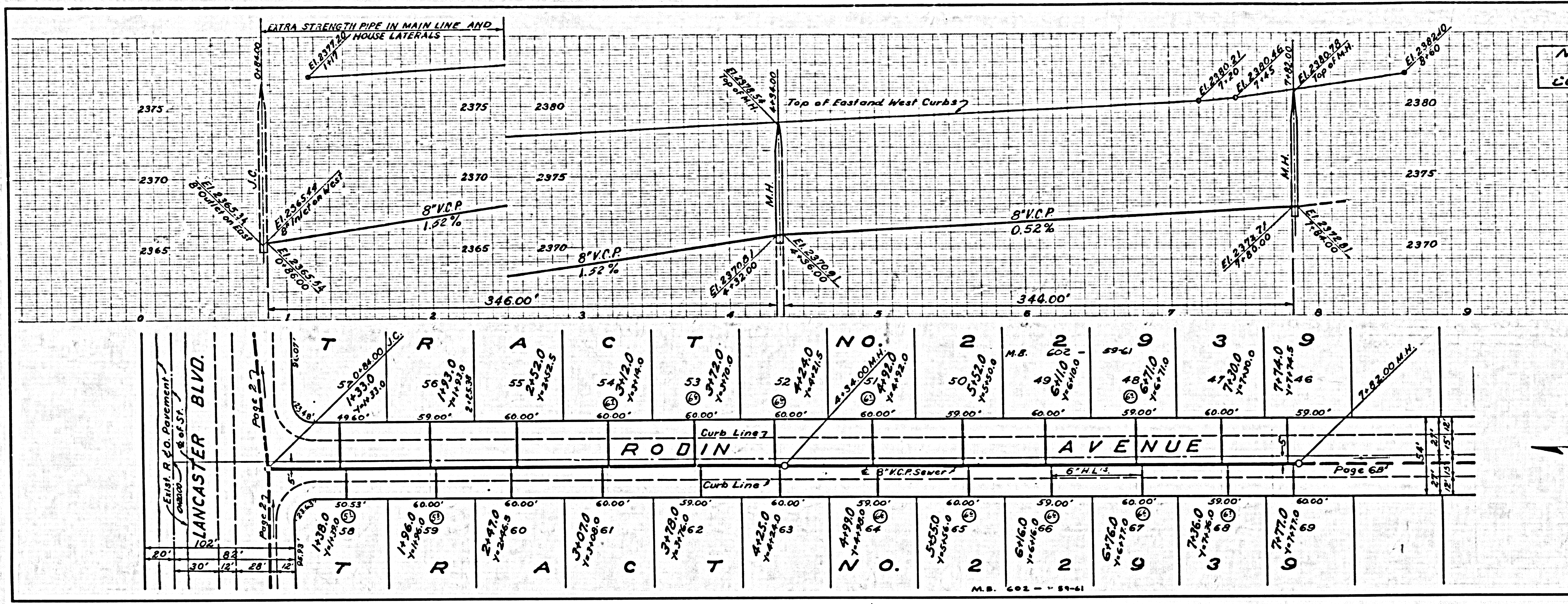
24,204



BC 1156

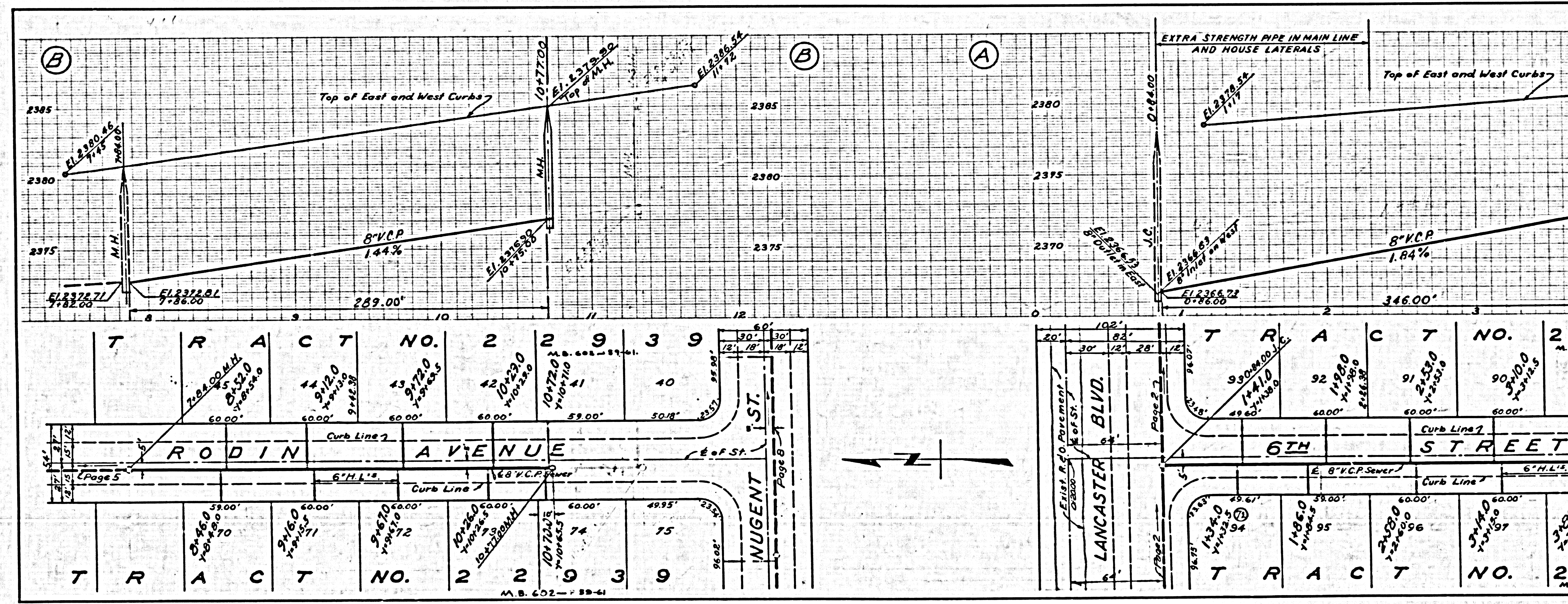
NO CHARGE FOR CONNECTIONS

24,205



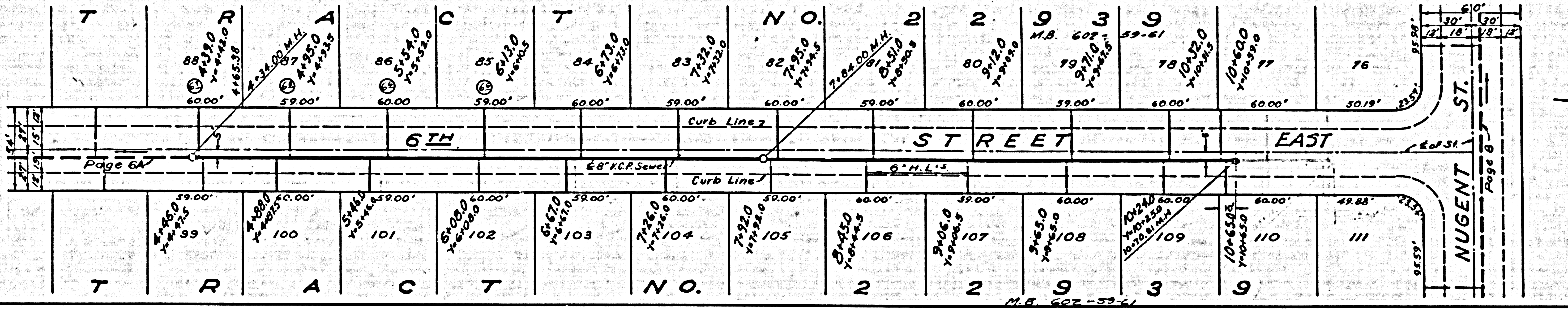
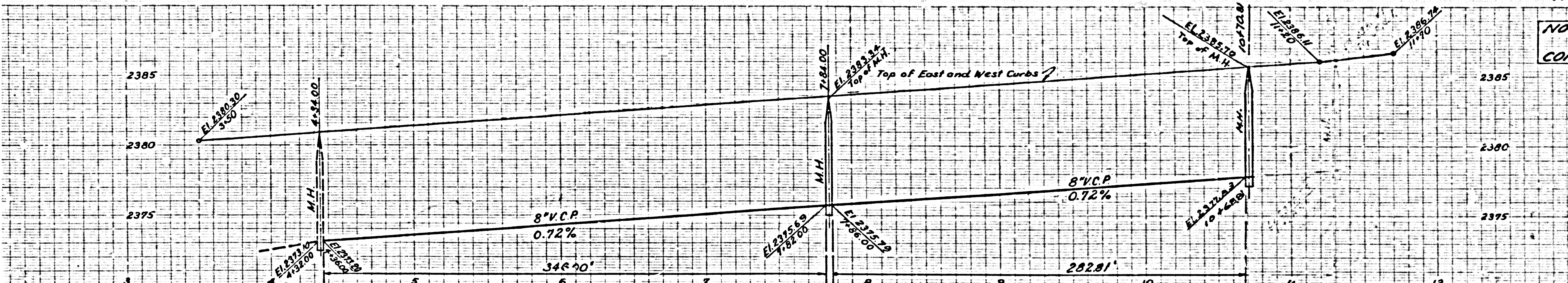
NO CHARGE FOR CONNECTIONS

24,206



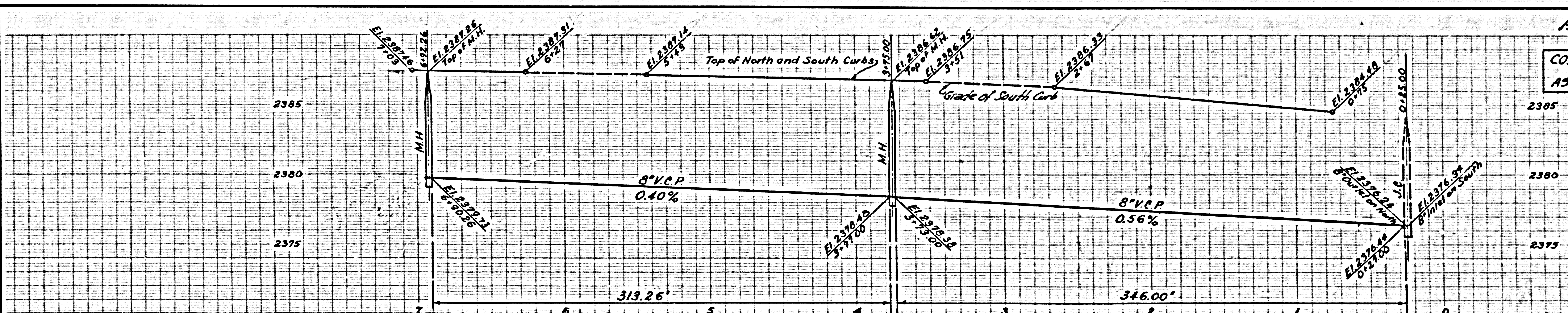
NO CHARGE FOR CONNECTIONS

24,207

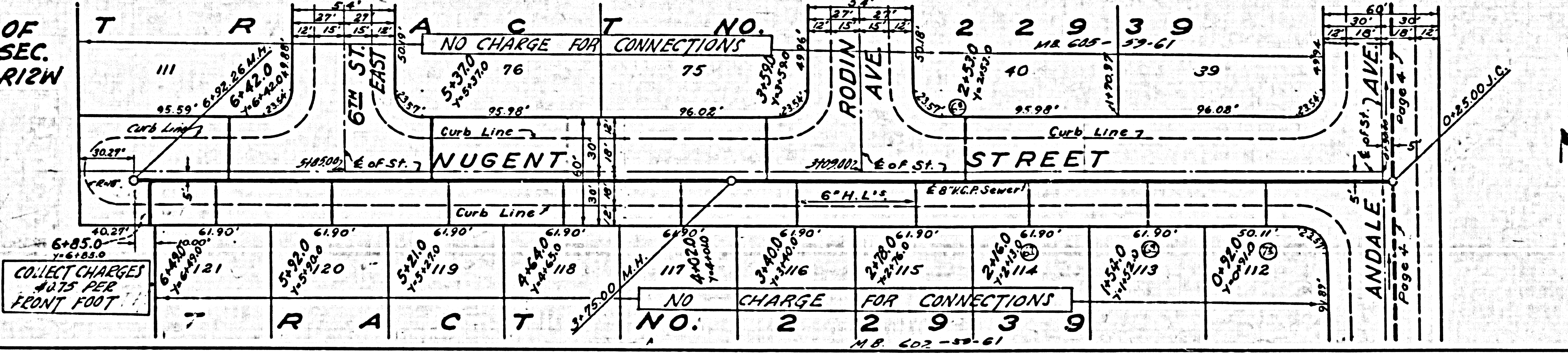


COLLECT CHARGES AS INDICATED

24,208



PART OF S.E. 1/4 SEC. 14 T7N, R12W



COLLECT CHARGES \$475 PER FRONT FOOT

BCAISE