

**BENCH MARK** ... BY 286 (RESET)  
 L.A. COUNTY ROAD DEPT. MONUMENT WITH  
 BRASS CAP AT INTERSECTION OF DONNEY  
 AVENUE AND ROSECRANS AVENUE  
 1951 ADJ. ELEV. 78.910

**INDEX TABLE**

SHEET	PAGE
1	1 & 2
2	3 & 4
3	5 & 6
4	7 & 8

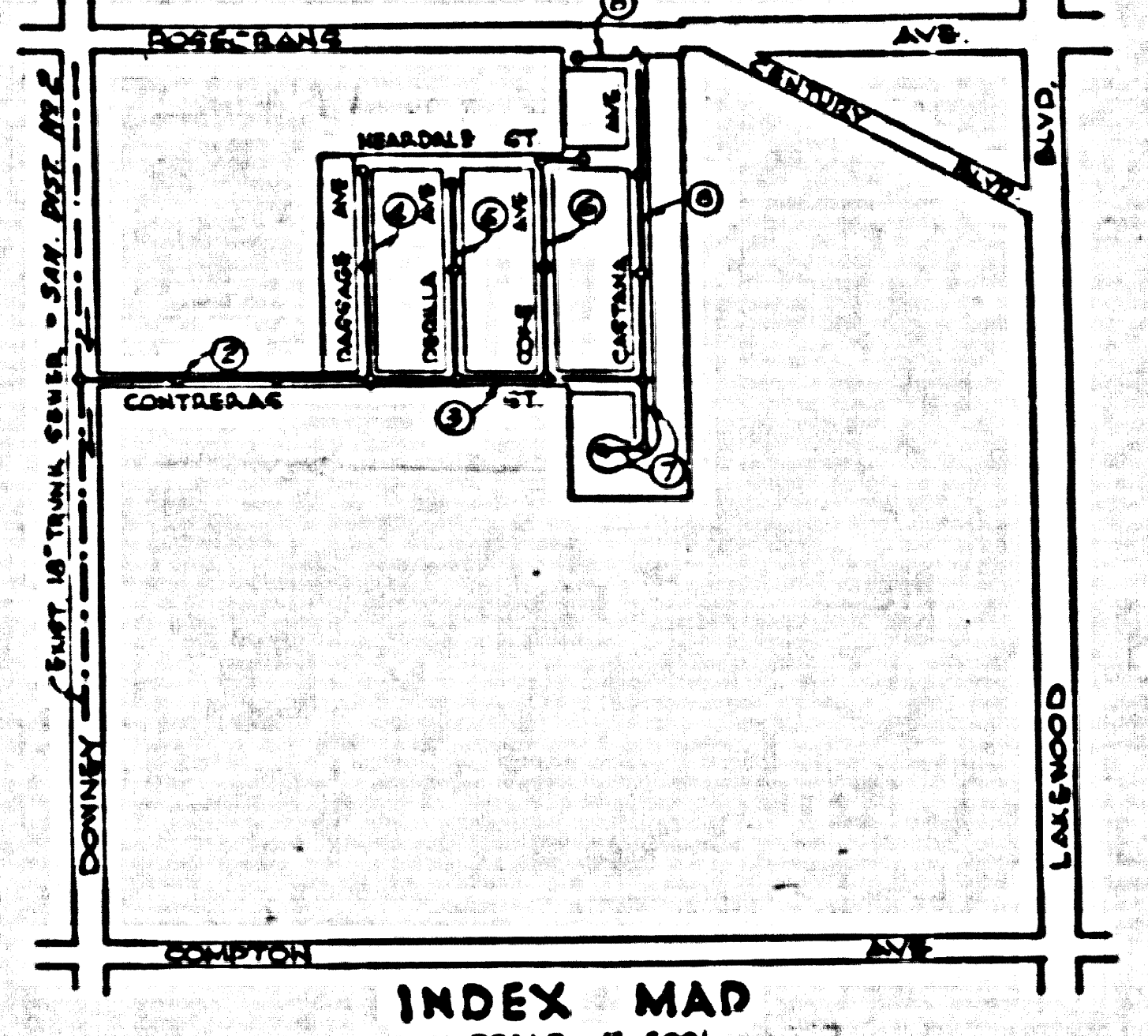
**CONNECTION CHARGES AS INDICATED**  
*L. Curtis 10-5-54*

Before breaking into any existing structure  
 and before final acceptance of this work,  
 County Sanitation District should be notified  
 in order that required inspection may be made.

*Check 2-18-57 Whelan*

**BELFLOWER BLDG. DIST. NO. 4**

- NOTE**  
 PROFILE STAKES ON THE PROPERTY LINE OR PROPERTY LINES PRODUCED AT RIGHT ANGLES TO THE SEWER LINE AT THE CENTER LINE OF EACH MANHOLE.  
 NO REPRESENTATIVE OF THE COUNTY ENGINEER WILL SURVEY OR LAYOUT ANY PORTION OF THE WORK.  
 THE OWNER OR HIS AUTHORIZED REPRESENTATIVE SHALL FURNISH THE COUNTY ENGINEER WITH GRADE SHEETS AND STATION FOR ALL HOUSE LATERALS AND T-Y BRANCHES AND SHALL PROVIDE STAKES FOR THEM AT THESE PROPER LOCATIONS WITH STATIONING PLAINLY MARKED. ANY CHANGE IN LOCATION SHALL BE REQUESTED BY WRITING BY THE OWNER OR HIS REPRESENTATIVE.  
 NO REVISIONS SHALL BE MADE IN THESE PLANS WITHOUT THE APPROVAL OF THE COUNTY ENGINEER.  
 1. USE STANDARD MANHOLE FRAMES AND COVERS, S-A-117, EXCEPT AS NOTED.  
 2. USE STANDARD STRENGTH PIPE EXCEPT AS NOTED.  
 3. USE CEMENT MORTAR FOR ALL VITRIFIED CLAY PIPE JOINTS.  
 4. RESURFACE ALL TRENCH WITHIN PAVED AREA TO MEET L.A. COUNTY ROAD DEPT. OR CALIF. STATE HIGHWAY DEPT. SPECIFICATIONS IN ACCORDANCE WITH PERMITS.  
 5. EXCAVATE FOUR FEET DEEP AT POINTS OF INTERFERENCE WITH POLES, ETC.  
 6. HOUSE LATERALS TO BE CONSTRUCTED WITH INVERTS AT PROPERTY LINE 6" BELOW CURB GRADE EXCEPT AS NOTED.  
 7. ALL STRUCTURES SHALL BE BRICK SET'S STRUCTURES, S-A-104, EXCEPT AS NOTED.  
 8. FOR ALLOWABLE LEAKAGE TEST USE "MANILA HO." SPEC. SEC. B.  
 9. MANHOLE TOPS IN UNIMPROVED AREAS OF WAY TO BE 4" ABOVE FINISHED GRADE.  
 10. The private engineer shall furnish the house lateral depth of the property line below the top-of-curb elevation for each house lateral on the grade sheet.



PROFILE ALIGNMENT AND GRADE OF **P.C. 4127**  
**SANITARY SEWERS** PAGE 1

TO BE CONSTRUCTED IN  
**TRACT No 17037** (24,144)

**PRIVATE CONTRACT NO. 4127**  
 W.S. 32

4 SHEETS, 8 PAGES  
 SCALE: 1" = 40' HORIZ. 1" = 4' VERT.  
 AUGUST, 1956  
 PREPARED IN THE OFFICES OF

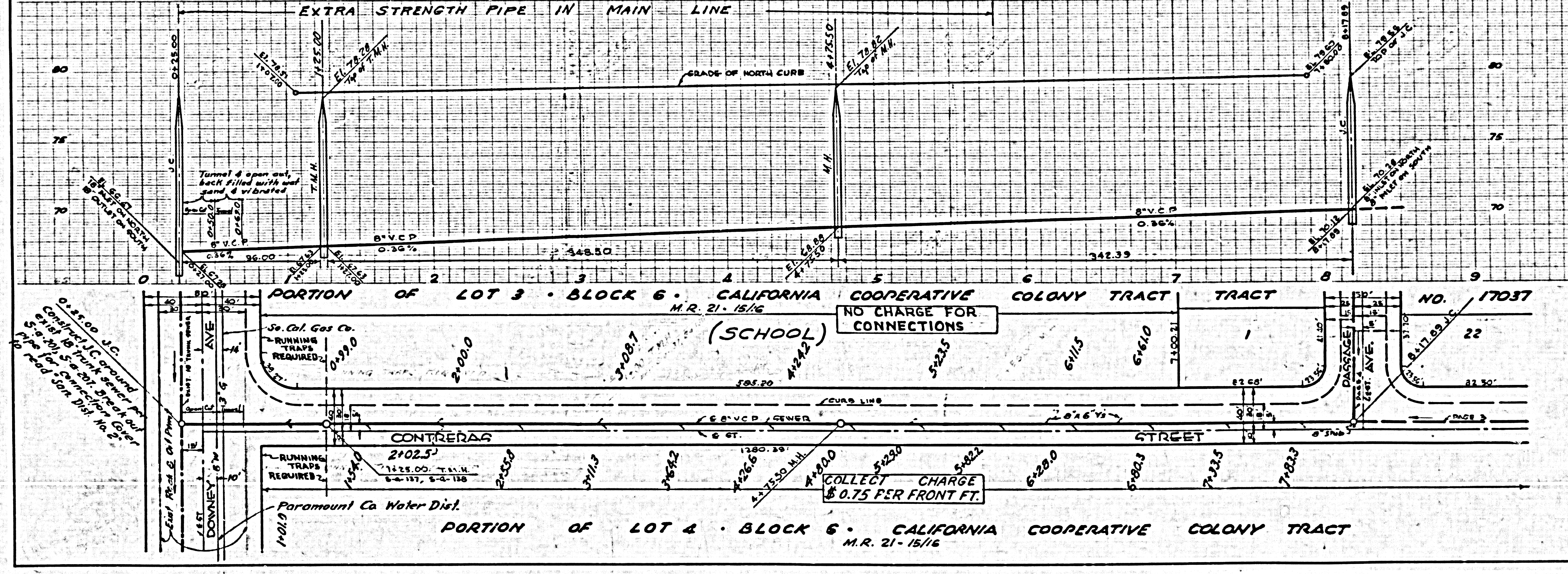
**VOORHEES TRINDLE NELSON, INC.**  
 BY *C.R.T. Nelson*  
 REG. C. E. NO. 8781

FOR LEGEND SEE PLAN NO. S-A-64

**NOTE**  
 GRADES TO WHICH THIS IMPROVEMENT IS TO BE CONSTRUCTED ARE SHOWN ON PLANS AND PROFILES. GRADE POINTS FOR TOP OF CURB, CENTER LINE OF STREETS, OR CENTER LINE OF ALLEYS ARE SHOWN BY CIRCLES ON PROFILES AT ALL POINTS BETWEEN DESIGNATED POINTS. THE GRADE SHALL BE ESTABLISHED SO AS TO CONFORM TO A STRAIGHT LINE DRAWN BETWEEN SAID DESIGNATED POINTS.  
 ELEVATIONS ARE IN FEET ABOVE U.S. MEAN SEA LEVEL UNLESS OTHERWISE SPECIFIED.  
 THE DRAWING AND THE DATA HEREON ARE HEREBY MADE A PART OF THE SPECIFICATIONS.  
 WORK SHALL BE CONSTRUCTED ACCORDING TO SPECIFICATIONS ON FILE IN THE OFFICE OF THE COUNTY ENGINEER AND SHALL BE PROSECUTED ONLY IN THE PRESENCE OF THE COUNTY ENGINEER.  
 BEFORE WORK CAN BE STARTED, THE CONTRACTOR MUST OBTAIN A PERMIT TO EXCAVATE IN COUNTY STREETS FROM THE L.A. COUNTY ROAD DEPT., 100 W. 2ND ST. AND MAKE A DEPOSIT WITH THE COUNTY ENGINEER, ROOM 224 SAN ANTONIO BLDG., 122 S. 50 BROADWAY SUFFICIENT TO COVER THE COST OF CONSTRUCTION INSPECTION AND RECORD PLANS.  
 APPROVAL OF THIS PLAN BY THE COUNTY OF LOS ANGELES DOES NOT CONSTITUTE A REPRESENTATION AS TO THE ACCURACY OF THE LOCATION OF OR THE EXISTENCE OR NON-EXISTENCE OF ANY UNDERGROUND STREET, PIPE, OR STRUCTURE WITHIN THE LIMITS OF THIS PROJECT. THIS NOTE APPLIES TO ALL PAGES.  
 IF WORK IS TO BE DONE IN A STATE HIGHWAY, A PERMIT MUST BE OBTAINED FROM THE STATE OF CALIFORNIA, DIVISION OF HIGHWAYS, 126 SOUTH SPRING STREET.

**COUNTY OF LOS ANGELES, CALIFORNIA**  
 APPROVED, JOHN A. LAMBE, COUNTY ENGINEER  
 APPROVED, A. M. RAWN, CHIEF ENGINEER  
 BY *A.P. Collins* SANITATION ENGINEER  
 BY *H. Posthumus* CHIEF ENGINEER  
 CHECKED BY *R.K. White* 10-5-56  
 OFFICE OF COUNTY ENGINEER, 800 C. E. NO. 3406

P.C. 4127 PAGE 2

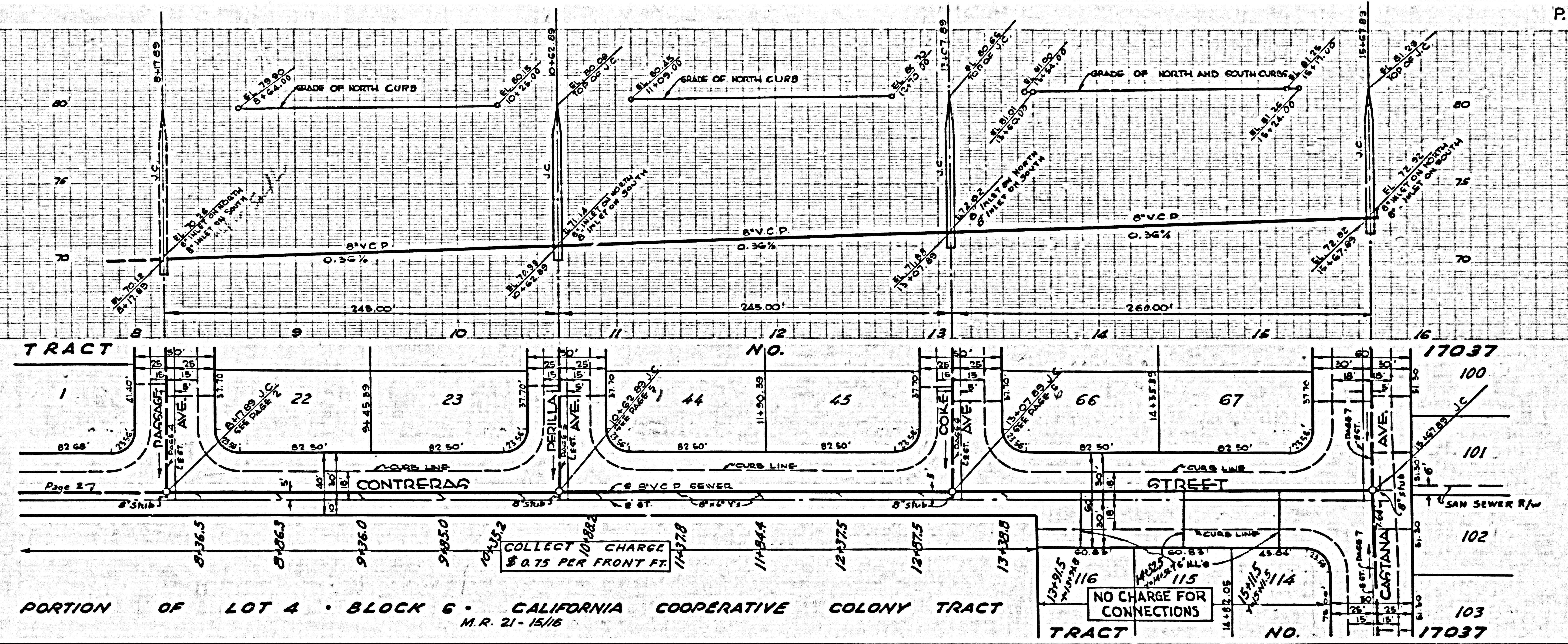


**CONNECTION CHARGES AS INDICATED**  
 (24,145)

65-4151-3

CONNECTION CHARGES AS INDICATED

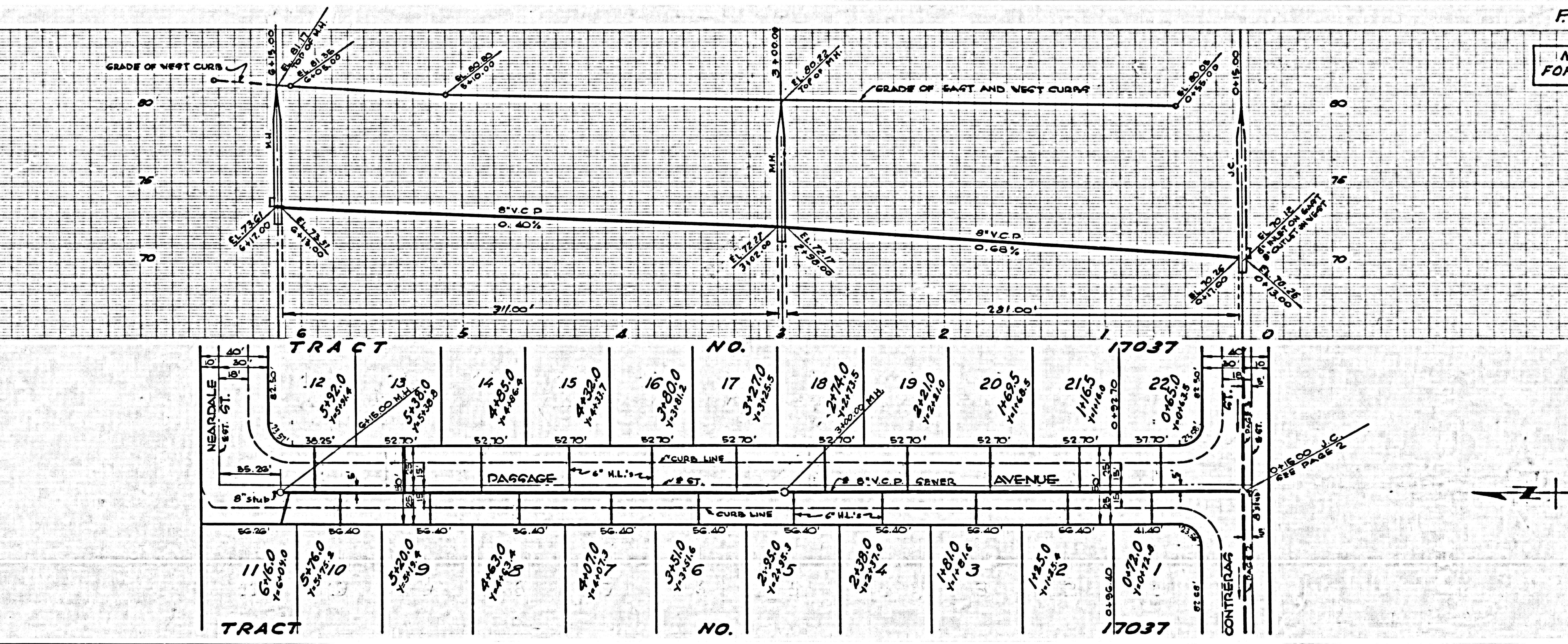
24,146



PORTION OF LOT 4 - BLOCK 6 - CALIFORNIA COOPERATIVE COLONY TRACT M.R. 21-1516

NO CHARGE FOR CONNECTIONS

24,147



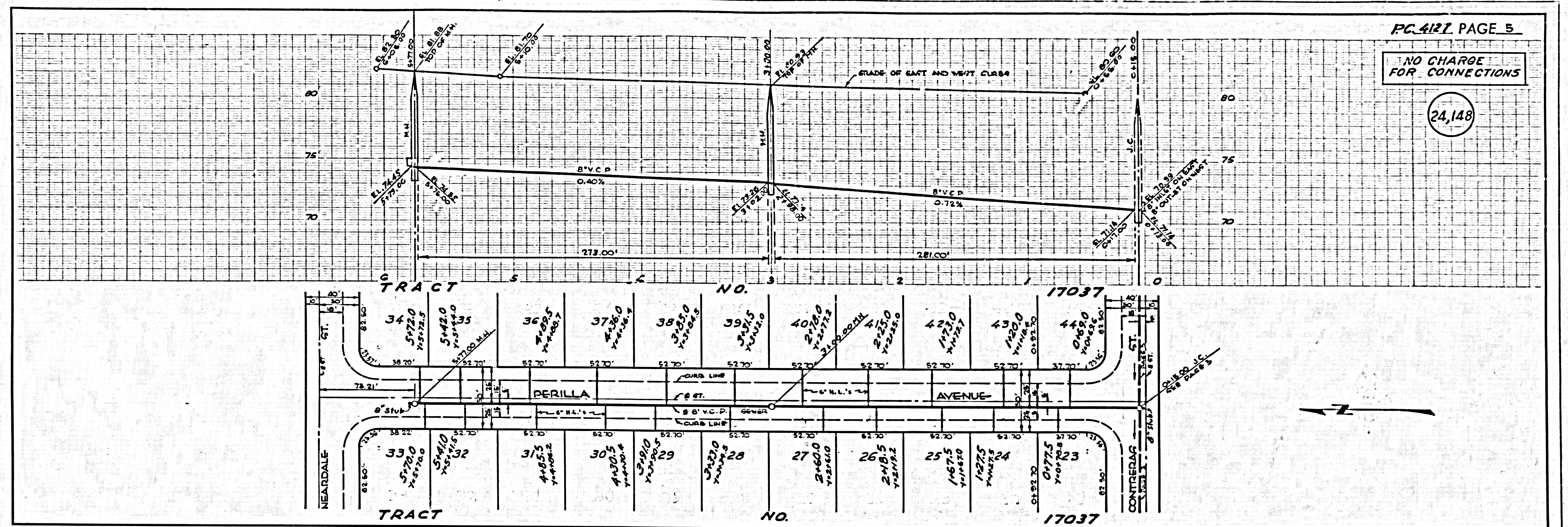
PORTION OF LOT 4 - BLOCK 6 - CALIFORNIA COOPERATIVE COLONY TRACT M.R. 21-1516

DCN:SS

RL

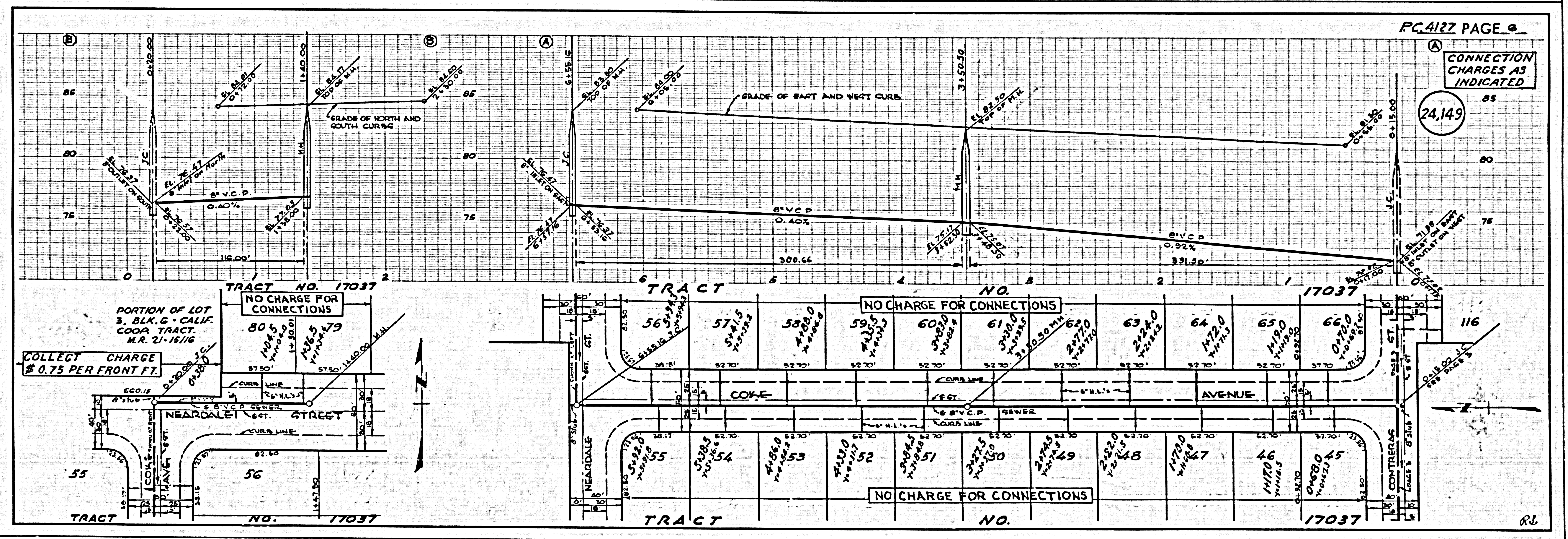
NO CHARGE FOR CONNECTIONS

24,148



CONNECTION CHARGES AS INDICATED

24,149



PORTION OF LOT 3, BLK. G - CALIF. COOP. TRACT, M.R. 21-15/16

COLLECT CHARGE \$ 0.75 PER FRONT FT.

NO CHARGE FOR CONNECTIONS

NO CHARGE FOR CONNECTIONS

NO CHARGE FOR CONNECTIONS

DC-1513

RL

