

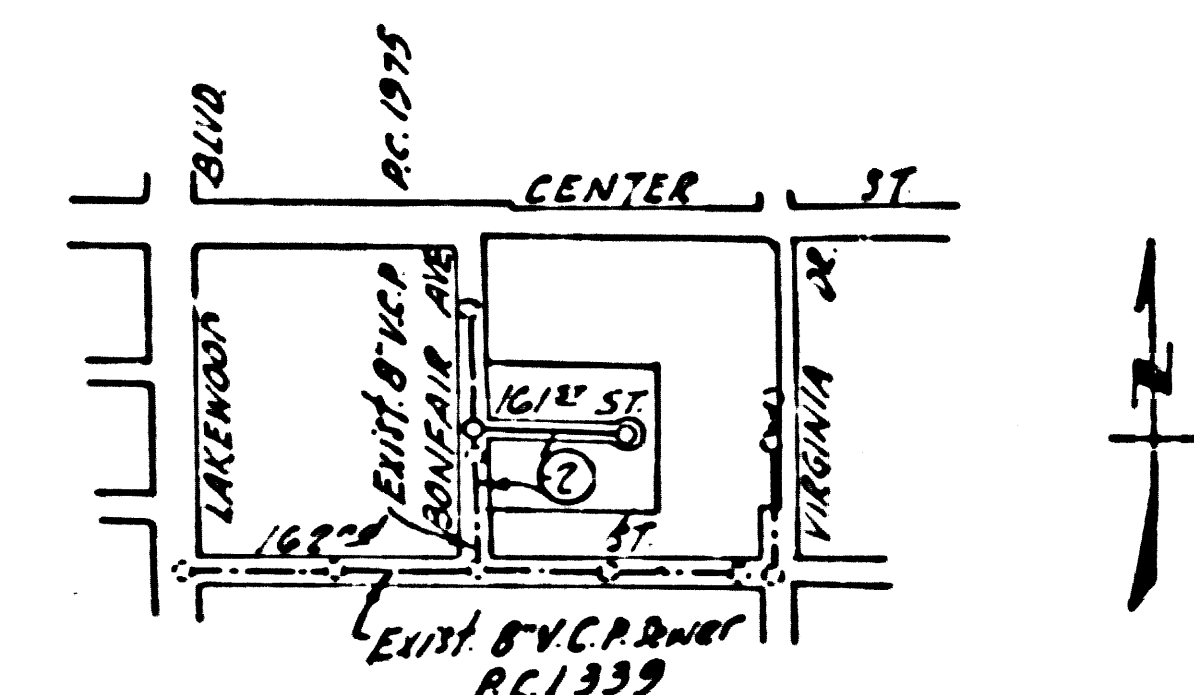
BELFLOWER BLDG. DIST. NO. 4

PROFILE ALIGNMENT AND GRADE OF **P.C. 4136**
SANITARY SEWERS PAGE 1
 TO BE CONSTRUCTED IN
TRACT No 20508 (24,529)

B.M. 57 2592 ELEV. 7068 Spk & L
 1' S OF N.E. COR. OF CONC.
 DRWY TO HOUSE No 9106
 31' S OF 1/4 OF CENTER ST.

- NOTES**
- PROVIDE STAKES ON THE PROPERTY LINE OR PROPERTY LINES PERPENDICULAR AT RIGHT ANGLES TO THE SEWER LINE AT THE CENTER LINE OF EACH MANHOLE.
 - NO REPRESENTATIVE OF THE COUNTY ENGINEER WILL SURVEY OR LAYOUT ANY PORTION OF THE WORK.
 - THE OWNER OR HIS AUTHORIZED REPRESENTATIVE SHALL FURNISH THE COUNTY ENGINEER WITH GRADE SHEETS AND STATIONING FOR ALL HOUSE LATERALS AND T BRANCHES AND SHALL PROVIDE STAKES FOR THEM AT THEIR PROPER LOCATIONS WITH STATIONING PLAINLY MARKED. ANY CHANGE IN LOCATION SHALL BE REQUESTED BY WRITING BY THE OWNER OR HIS REPRESENTATIVE.
 - NO REVISIONS SHALL BE MADE IN THESE PLANS WITHOUT THE APPROVAL OF THE COUNTY ENGINEER.
 - USE STANDARD MANHOLE FRAMES AND COVERS, S.A.-117, 24" DIA. 12" DEPTH.
 - USE STANDARD STRENGTH PIPE EXCEPT AS NOTED.
 - USE CEMENT MORTAR FOR ALL VITRIFIED CLAY PIPE JOINTS.
 - RESURFACE ALL TRENCH WITHIN PAVED AREA TO MEET L.A. COUNTY ROAD DEPT. OR CALIF. STATE HIGHWAY DEPT. REQUIREMENTS IN ACCORDANCE WITH PERMITS.
 - ENCASE FOUR FEET OF SEWER AT POINTS OF INTERFERENCE WITH POLES, S.A.-119.
 - HOUSE LATERALS TO BE CONSTRUCTED WITH INVERTS AT PROPERTY LINE 6" BELOW CURB GRADE EXCEPT AS NOTED.
 - ALL STRUCTURES SHALL BE BRICK SEWER STRUCTURES, S.A.-194, ENGINEERED.
 - FOR ALLOWABLE LEAKAGE TEST USE FORMULA NO. 1, S.P.C.S., SEC. 24.
 - MANHOLE TOPS IN UNIMPROVED RIGHTS-OF-WAY TO BE 4" ABOVE FINISHED GRADE.
 - THE PRIVATE ENGINEER IS TO FINISH THE HOUSE LATERAL DEPTH AT THE PROPERTY LINE BELOW THE TOP OF CURB ELEVATION FOR EACH HOUSE LATERAL, ON THE GRADE SHEET.

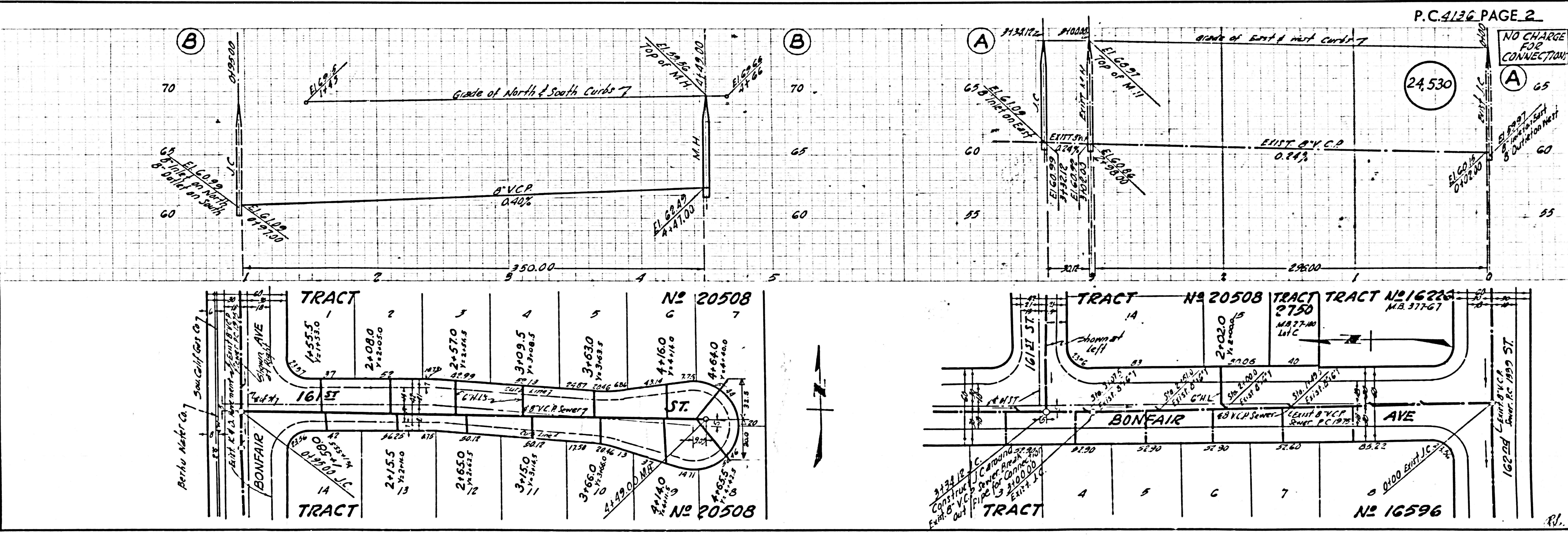
PRIVATE CONTRACT NO. 4136
 W.S. 33
 1 SHEET, 2 PAGES
 SCALE: HORIZ. 1" = 40' VERT. 1" = 4' AUGUST, 1956
 PREPARED IN THE OFFICES OF
OLSON SURVEYING SERVICE INC.
 BY: *Frank P. Collins*
 REG. C. E. NO. 2822
 FOR LEGEND SEE PLAN NO. S-A-64



INDEX MAP
TR. 20508 RC. 4136
 SCALE: 1" = 600'

NO CHARGE FOR CONNECTIONS
L. Collins 10-8-56

NOTE
 GRADES TO WHICH THIS IMPROVEMENT IS TO BE CONSTRUCTED ARE SHOWN ON PLANS AND PROFILE GRADE POINTS FOR TOP OF CURB, CENTER LINE OF STREET, OR CENTER LINE OF ALLEYS ARE SHOWN BY CIRCLES ON PROFILES AT ALL POINTS BETWEEN DESIGNATED POINTS THE GRADE SHALL BE ESTABLISHED SO AS TO CONFORM TO A STRAIGHT LINE DRAWN BETWEEN SAID DESIGNATED POINTS.
 ELEVATIONS ARE IN FEET ABOVE U.S.C.E.S. SEA LEVEL, DATA OF 1955.
 THIS DRAWING AND THE DATA HEREON ARE HEREBY MADE A PART OF THE SPECIFICATIONS.
 WORK SHALL BE CONSTRUCTED ACCORDING TO SPECIFICATIONS ON FILE IN THE OFFICE OF THE COUNTY ENGINEER AND SHALL BE PROSECUTED ONLY IN THE PRESENCE OF THE COUNTY ENGINEER.
 BEFORE WORK CAN BE STARTED, THE CONTRACTOR MUST OBTAIN A PERMIT TO EXCAVATE IN THE COUNTY STREET FROM THE L.A. COUNTY ROAD DEPT., 126 W. 5TH ST. AND MAKE A DEPOSIT WITH THE COUNTY ENGINEER, ROOM 324 PAN AMERICAN BUILDING, 324 SO. BROADWAY, SUFFICIENT TO COVER THE COST OF CONSTRUCTION, INSPECTION AND SPECIFIC PLANS.
 APPROVAL OF THIS PLAN BY THE COUNTY OF LOS ANGELES DOES NOT CONSTITUTE A REPRESENTATION AS TO THE ACCURACY OF THE LOCATION OR OF THE EXISTENCE OR NON-EXISTENCE OF ANY UNDERGROUND UTILITY PIPE, OR STRUCTURE WITHIN THE LIMITS OF THIS PROJECT. THIS NOTE APPLIES TO ALL PAGES.
 IF WORK IS TO BE DONE IN A STATE HIGHWAY, A PERMIT MUST BE OBTAINED FROM THE STATE OF CALIFORNIA, DIVISION OF HIGHWAYS, 128 SOUTH SPRING STREET.
COUNTY OF LOS ANGELES, CALIFORNIA
 APPROVED, JOHN A. LAMBE, COUNTY ENGINEER
 APPROVED, A. M. BAWN, CHIEF ENGINEER
 BY: *F. P. Collins* (Sanitary Engineer) BY: *J. P. Collins* (Civil Engineer)
 CHECKED BY: *R. P. Collins* 10-9-56
 OFFICE OF COUNTY ENGINEER, 222 S. E. NO. 7460



P.C. 4136 PAGE 2

NO CHARGE FOR CONNECTIONS

(24,530)

OFFICE OF COUNTY ENGINEER, 222 S. E. NO. 7460