

PUENTE BLDG. DIST. NO. 2

PROFILE ALIGNMENT AND GRADE OF P.C. 4143  
 SANITARY SEWERS PAGE 1  
 TO BE CONSTRUCTED IN

THE INTERSECTION OF CLARK  
 AVENUE & TURNBULL CANYON ROAD

PRIVATE CONTRACT NO. 4143

W.S. 38

1 SHEET 2 PAGES

SCALE: HORIZ. 1" = 40' VERT. 1" = 4'

AUGUST, 1956

24,089

PREPARED BY THE OFFICES OF  
 H. R. LOVETT & ASSOCIATES, INC.  
 ENGINEERS & SURVEYORS (2)

By *Richard J. Lovett*  
 REG. C. E. NO. 2981

FOR LEGEND SEE PLAN NO. S-A-64

NOTE:  
 GRADES TO WHICH THIS IMPROVEMENT IS TO BE CONSTRUCTED ARE SHOWN ON PLANS AND PROFILES. GRADE POINTS FOR  
 TOP OF CURB, CENTER LINE OF STREET, OR CENTER LINE OF ALLEYS ARE SHOWN BY CIRCLES ON PROFILES. AT ALL POINTS BETWEEN  
 DISCONTINUOUS POINTS THE GRADE SHALL BE ESTABLISHED SO AS TO CONFORM TO A STRAIGHT LINE DRAWN BETWEEN SAID DIS-  
 CONTINUOUS POINTS.  
 ELEVATIONS ARE IN FEET ABOVE U.S.C. & G.S. SEA LEVEL DATUM OF 1929.  
 THIS DRAWING AND THE DATA HEREON ARE HEREBY MADE A PART OF THE SPECIFICATIONS.  
 WORK SHALL BE CONSTRUCTED ACCORDING TO SPECIFICATIONS ON FILE IN THE OFFICE OF THE COUNTY ENGINEER AND SHALL  
 BE PROSECUTED ONLY IN THE PRESENCE OF THE COUNTY ENGINEER.  
 BEFORE WORK IS STARTED, THE CONTRACTOR MUST OBTAIN A PERMIT TO EXCAVATE IN COUNTY STREETS FROM THE  
 L. A. COUNTY ROAD DEPT. FOR WHICH HE SHALL DEPOSIT WITH THE COUNTY ENGINEER, ROOM 204 PAN AMERICAN BLDG.,  
 222 S.W. BROADWAY, BUREAU TO COVER THE COST OF CONSTRUCTION INSPECTION AND RECORD PLANS.  
 APPROVAL OF THIS PLAN BY THE COUNTY OF LOS ANGELES DOES NOT CONSTITUTE A REPRESENTATION AS TO THE ACCURACY  
 OF THE LOCATION OF OR THE EXISTENCE OR NON-EXISTENCE OF ANY UNDERGROUND UTILITY PIPE, OR STRUCTURE WITHIN THE  
 LIMITS OF THIS PROJECT. THIS NOTE APPLIES TO ALL PAGES.  
 IF WORK IS TO BE DONE IN A STATE HIGHWAY, A PERMIT MUST BE OBTAINED FROM THE STATE OF CALIFORNIA, DIVISION OF  
 HIGHWAYS, 128 SOUTH BRIDGE STREET.

COUNTY OF LOS ANGELES, CALIFORNIA

APPROVED, JOHN A. LAMBE, COUNTY ENGINEER APPROVED, A. M. BAWN, CHIEF ENGINEER  
 CO. SAN. DIST. NO. 15

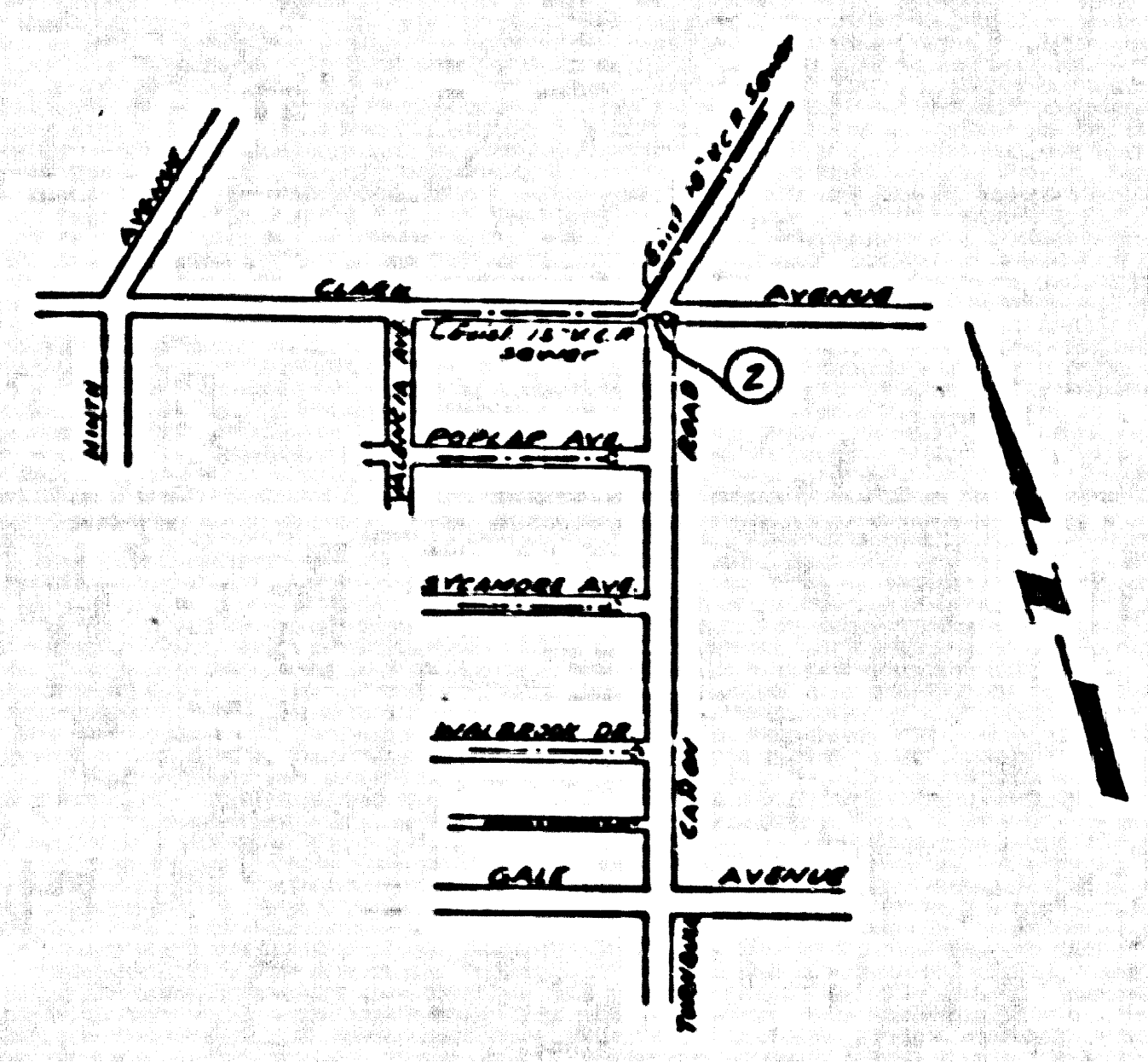
BY *A. P. Collins* SANITATION ENGINEER BY *A. M. Bawn* CHIEF ENGINEER  
 CHECKED BY *P. J. Kuhn* 12-2-56 OFFICE OF COUNTY ENGINEER, REG. C. E. NO. 7860

APPROVED BY  
 INDUSTRIAL WASTE DIVISION  
 BY *Richard J. Lovett* DATE 12/5/56

- NOTES:  
 PROVIDE STAKES ON THE PROPERTY LINE OR PROPERTY LINES PRODUCED AT RIGHT ANGLES TO THE SEWER LINE AT THE CENTER  
 LINE OF EACH MANHOLE.  
 NO REPRESENTATIVE OF THE COUNTY ENGINEER WILL SURVEY OR LAYOUT ANY PORTION OF THE WORK.  
 THE OWNER OR HIS AUTHORIZED REPRESENTATIVE SHALL FURNISH THE COUNTY ENGINEER WITH GRADE SHEETS AND STATION  
 FOR ALL HOUSE LATERALS AND Y BRANCHES AND SHALL PROVIDE STAKES FOR THEM AT THEIR PROPER LOCATIONS WITH STATION-  
 ING PLAINLY MARKED. ANY CHANGE IN LOCATION SHALL BE INDICATED IN WRITING BY THE OWNER OR HIS REPRESENTATIVE.  
 NO REVISIONS SHALL BE MADE IN THESE PLANS WITHOUT THE APPROVAL OF THE COUNTY ENGINEER.  
 1. USE STANDARD MANHOLE FRAMES AND COVERS, S.A-117, EXCEPT AS NOTED.  
 2. USE STANDARD STRENGTH PIPE EXCEPT AS NOTED.  
 3. USE CEMENT MORTAR FOR ALL WYTHED CLAY PIPE JOINTS.  
 4. REINFORCE ALL TRENCH WITHIN PAVED AREAS TO MEET L. A. COUNTY ROAD DEPT. OR CALIF. STATE HIGHWAY DEPT. REQUIRE-  
 MENTS IN ACCORDANCE WITH PERMITS.  
 5. INDICATE FOUR FEET OF SEWER AT POINTS OF INTERFERENCE WITH POLES, S.A-116.  
 6. HOUSE LATERALS TO BE CONSTRUCTED WITH A 1/2" rise per foot to property line.  
 7. ALL STRUCTURES SHALL BE BUILT OF STRUCTURAL S.A-104, EXCEPT AS NOTED.  
 8. FOR ALLOWABLE SEWAGE TEST USE FORMULA NO. 1 IN SPEC. SEC. 10.  
 9. MANHOLE TOPS IN UNPAVED RIGHTS-OF-WAY TO BE 6" ABOVE FINISHED GRADE.  
 10. THE PRIVATE ENGINEER IS TO FURNISH THE HOUSE LATERAL DEPTH AT THE PROPERTY  
 LINE BELOW THE ELEVATION OF THE TOP OF CURB OF THE STREET. SEE EACH HOUSE  
 LATERAL ON THE GRADE SHEET.

NO CHARGE FOR  
 CONNECTIONS  
*12-4-56*

Before breaking into any existing structure  
 and before final acceptance of this work,  
 County Sanitation District should be notified  
 in order that required inspection may be made.



B.M. S.G. 1341  
 Spk. and Lead 4' East end  
 of Curb return at the  
 Northeast cor. of 9th & Gale  
 Ave. Elev. 330.62

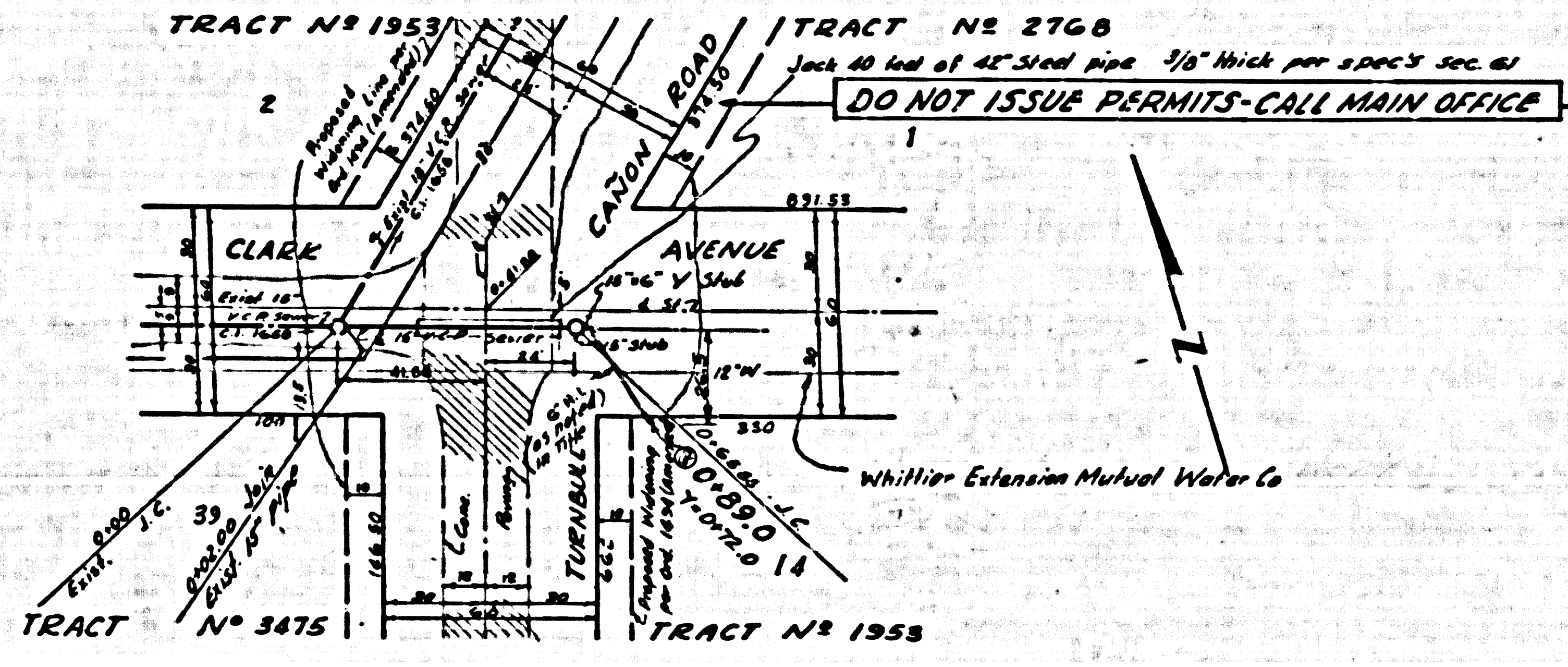
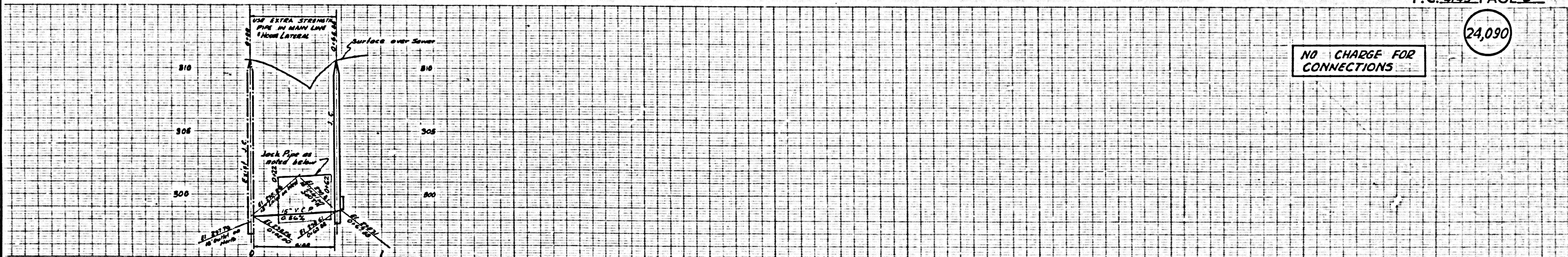
INDEX MAP  
 SCALE 1" = 600'  
 RC 4143

*Added 2-13-57 W. L. ...*

P.C. 4143 PAGE 2

24,090

NO CHARGE FOR  
 CONNECTIONS



D. 4143