

INDEX MAP
TRACT No 20085
P.C. 4150
SCALE 1"=300'

BENCH MARK
Mission Drive and Rosemead Blvd. (W. side) on the C.L. of Mission Dr. 50' W. of angle point, in a well cut thru the pavement and protected by a cast iron cover marked "County Surveyor Monument." A std. C.S. monument marked "R.E. 325," set in concrete 7" below surface.
R.E. 1383-8 1353 Adj. Elev. 332.218

TEMPLE CITY. BLDG. DIST. NO. 5

- NOTE:
PROFILES STAKED ON THE PROPERTY LINE OR PROPERTY LINES PRODUCED AT RIGHT ANGLES TO THE SEWER LINE AT THE CENTER LINE OF EACH MANHOLE.
NO REPAIRS TO THE COUNTY ENGINEER WILL SURVIVE OR LAYOUT ANY PORTION OF THE WORK.
THE OWNER OR HIS AUTHORIZED REPRESENTATIVE SHALL FURNISH THE COUNTY ENGINEER WITH GRADE SHEETS AND STATION FOR ALL HOUSE LATERALS AND V BRANCHES AND SHALL PROVIDE STAKES FOR THEM AT THEIR PROPER LOCATIONS WITH STATIONING PLAINLY MARKED AND CHANGES IN LOCATION SHALL BE INDICATED BY WRITING BY THE OWNER OR HIS REPRESENTATIVE.
NO STRUCTURES SHALL BE BUILT IN THESE PLANS WITHOUT THE APPROVAL OF THE COUNTY ENGINEER.
1. USE STANDARD MANHOLE FRAMES AND COVERS, S.A. 117, EXCEPT AS NOTED.
 2. USE STANDARD STRENGTH PIPE.
 3. USE STANDARD MORTAR FOR ALL VENTED CHIMNEY JOINTS.
 4. RESURFACE ALL DRIVEWAYS WITHIN PAVED AREA TO MEET L. A. COUNTY ROAD DEPT., OR CALIF. STATE HIGHWAY DEPT. SPECIFICATIONS IN ACCORDANCE WITH PERMITS.
 5. INCASE FOUR FEET OF SEWER AT POINTS OF INTERFERENCE WITH POLES, S.A. 119.
 6. HOUSE LATERALS TO BE CONCRETE WITH BRICKS AT PROPERTY LINE. ONLY SHOW CURB GRADE EXCEPT AS NOTED.
 7. ALL STRUCTURES SHALL BE BRICK SEWER STRUCTURES, S.A. 104, EXCEPT AS NOTED.
 8. FOR ALLOWABLE GARAGE USE USE FORMULA NO. 1 SPEC. SEC. 24.
 9. MANHOLE TOPS IN UNIMPROVED RIGHTS-OF-WAY TO BE 6" ABOVE FINISHED GRADE.
 10. THE PRIVATE ENGINEER IS TO FURNISH THE HOUSE LATERALS DEPTH AT THE PROPERTY LINE BELOW THE TOP OF CURB ELEVATION FOR EACH HOUSE LATERAL, ON THE GRADE SHEETS.

INDEX TABLE

SHEETS	PAGES
1	1-2
2	3-4

NO CHARGE FOR CONNECTIONS
P. K. Kuhn 2-27-56

before breaking into any existing structure and before final acceptance of this work, County Sanitation District should be notified in order that required inspection may be made.

Checked 12-10-56 *W. A. ...*

TRACT No 20085
PRIVATE CONTRACT NO. 4150

W.S. 44
2 SHEETS, 4 PAGES
SCALE: HORIZ. 1"=40' VERT. 1"=4' AUGUST, 1956
PREPARED IN THE OFFICES OF
TREADWELL ENGINEERING CORPORATION

23,749

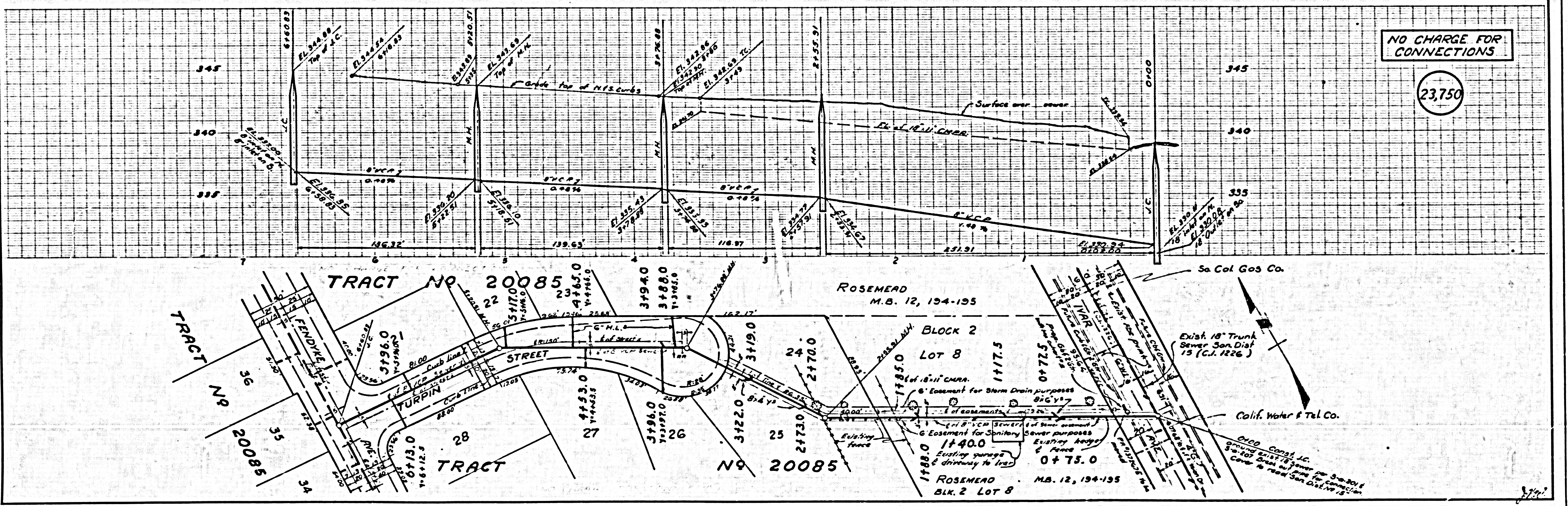
W. A. Treadwell
REG. C. E. NO. 4-18
FOR LEGEND SEE PLAN NO. S-A-64

NOTE:
GRADES TO WHICH THIS IMPROVEMENT IS TO BE CONSTRUCTED ARE SHOWN ON PLANS AND PROFILES. GRADE POINTS FOR TOP OF CURB, CENTER LINE OF STREET, OR CENTER LINE OF ALLEYS ARE SHOWN BY CIRCLES ON PROFILES AT ALL POINTS BETWEEN DESIGNATED POINTS THE GRADE SHALL BE ESTABLISHED SO AS TO COMPLY TO A STRAIGHT LINE DRAWN BETWEEN SAID DESIGNATED POINTS.
ELEVATIONS ARE IN FEET ABOVE U.S.C. & G.S. MEAN LEVEL. DATUM: M.P. 105.0
LINE DRAWING AND THE DATA HEREON ARE HEREBY MADE A PART OF THE SPECIFICATIONS.
WORK SHALL BE CONSTRUCTED ACCORDING TO SPECIFICATIONS ON FILE IN THE OFFICE OF THE COUNTY ENGINEER AND SHALL BE PROSECUTED ONLY IN THE PRESENCE OF THE COUNTY ENGINEER.
BEFORE WORK CAN BE STARTED, THE CONTRACTOR MUST OBTAIN A PERMIT TO RECLAIM THE COUNTY STREETS FROM THE L. A. COUNTY ROAD DEPT., 126 W. 2ND ST. AND MAKE A DEPOSIT WITH THE COUNTY ENGINEER, FOUR 20¢ PER AMERICAN BOND. \$10.00 BOND MAY BE SUBSTITUTED TO COVER THE COST OF CONSTRUCTION INSPECTION AND RECORD PLANS.
APPROVAL OF THE PLAN BY THE COUNTY OF LOS ANGELES DOES NOT CONSTITUTE A REPRESENTATION AS TO THE ACCURACY OF THE LOCATION OF OR THE EXISTENCE OR NON-EXISTENCE OF ANY UNDERGROUND UTILITY PIPE, OR STRUCTURE WITHIN THE LIMITS OF THIS PROJECT THIS NOTE APPLIES TO ALL WORK.
IF WORK IS TO BE DONE ON A STATE HIGHWAY, A PERMIT MUST BE OBTAINED FROM THE STATE OF CALIFORNIA, DIVISION OF HIGHWAYS, 128 SOUTH SPRING STREET.

COUNTY OF LOS ANGELES, CALIFORNIA
APPROVED, JOHN A. LAMME, COUNTY ENGINEER APPROVED, A. M. RAWNH, CHIEF ENGINEER
BY *J. A. Lamme* BY *A. M. Rawn*
132X SANITATION ENGINEER OFFICE ENGINEER
CHECKED BY *P. K. Kuhn* 2-27-56
OFFICE OF COUNTY ENGINEER, REG. C. E. NO. 7860

NO CHARGE FOR CONNECTIONS

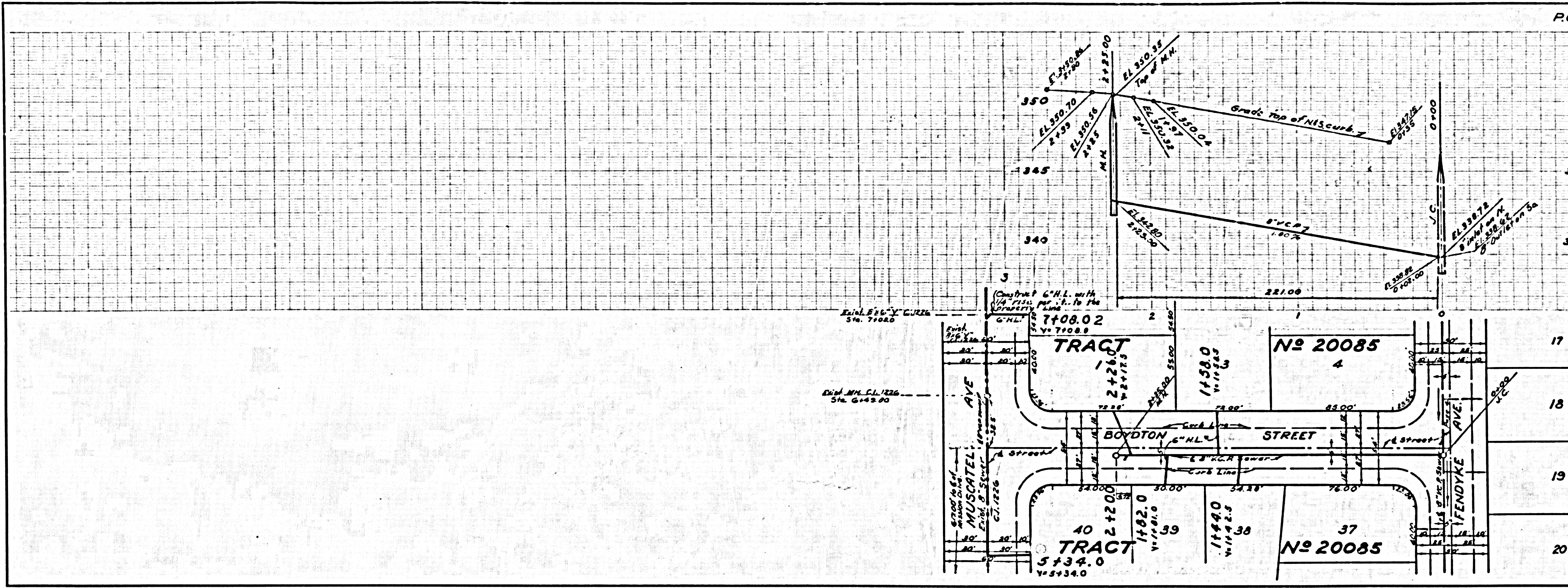
23,750



P.C. 4150

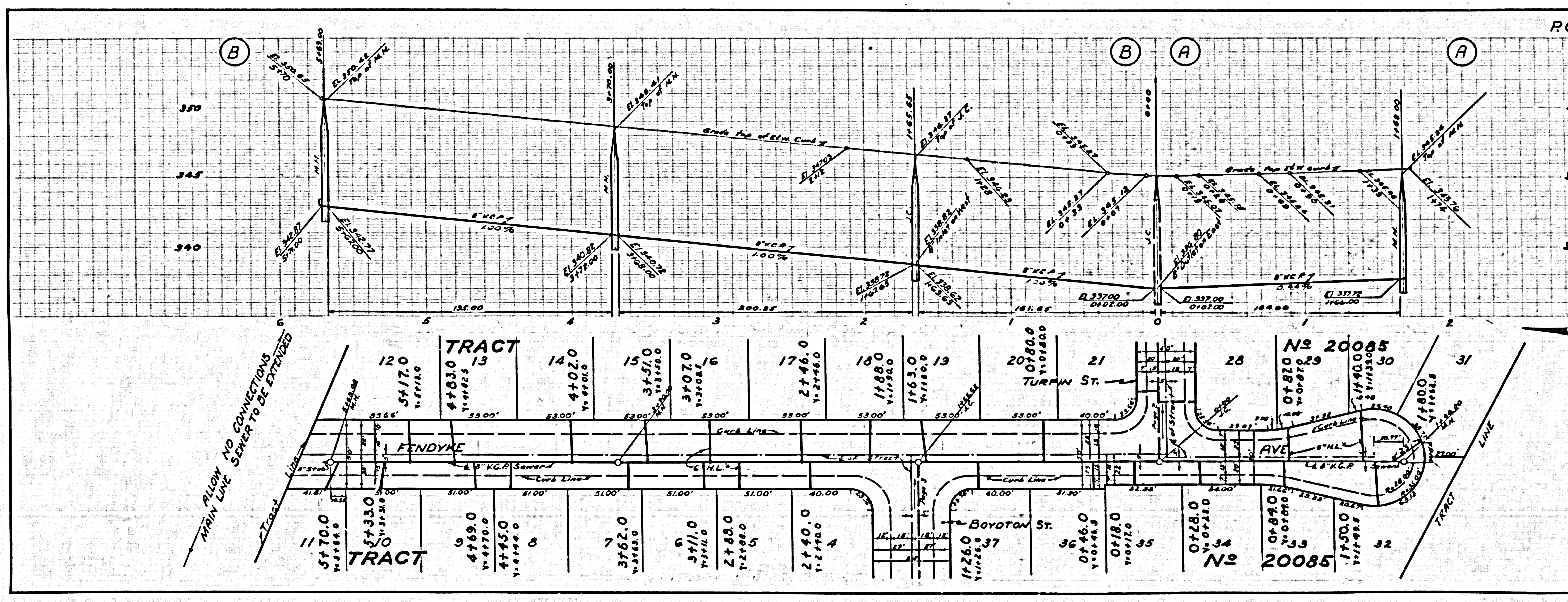
NO CHARGE FOR CONNECTIONS

23,751



NO CHARGE FOR CONNECTIONS

23,752



ALLOW NO CONNECTIONS
MAIN LINE SEWER TO BE EXTENDED

23,752