

B.M. ME 15 Elev. 250.148 F.B. 1728 pg 68  
 Hoyt Ave and Rush St., N.H. cor  
 Bl'gk. in RR # 33374N-E

### PUENTE BLDG. DIST. NO. 2

PROFILE ALIGNMENT AND GRADE OF **P.C. 4151**  
**SANITARY SEWERS** PAGE **1**

TO BE CONSTRUCTED IN  
**SANITARY SEWER RIGHT OF WAY**  
**NORTH OF RUSH STREET**

**PRIVATE CONTRACT NO. 4151**

W.S. 37

— 1 SHEET, — 2 PAGES

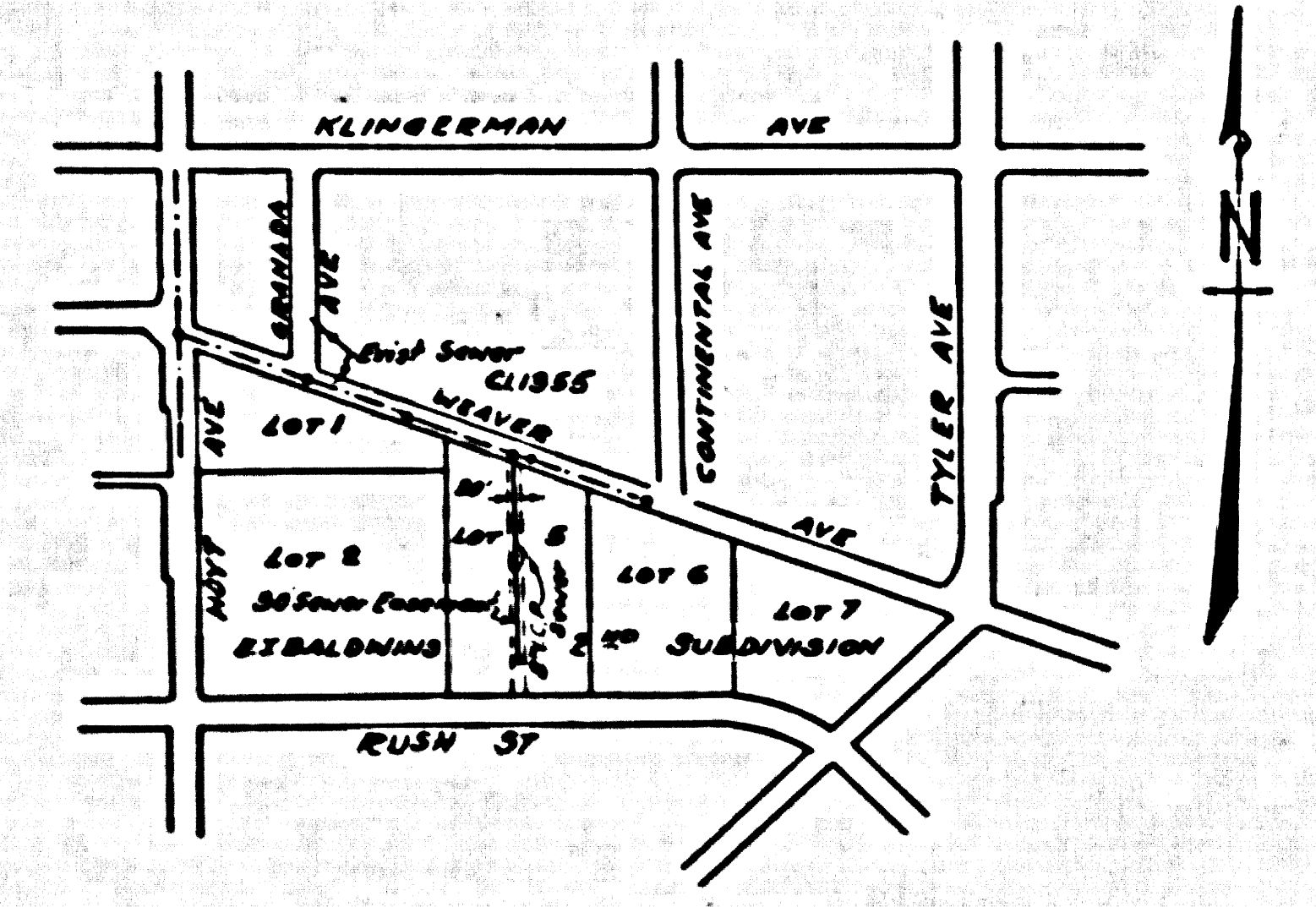
SCALE: 1" = 10' SEPTEMBER 1956

PREPARED IN THE OFFICES OF  
**ADAMS & ELLS ENGINEERS**

REG. C.E. NO. 617

FOR LEGEND SEE PLAN NO. S.A-64

- NOTES:
- PROVIDE STAKES ON THE PROPERTY LINE OR PROPERTY LINES PRODUCED AT RIGHT ANGLES TO THE SEWER LINE AT THE CENTER LINE OF EACH MANHOLE.
  - NO REPRESENTATIVE OF THE COUNTY ENGINEER WILL SURVEY OR LAY OUT ANY PORTION OF THE WORK.
  - THE OWNER OR HIS AUTHORIZED REPRESENTATIVE SHALL FURNISH THE COUNTY ENGINEER WITH GRADE SHEETS AND STATION FOR ALL HOUSE LATERALS AND Y BRANCHES AND SHALL PROVIDE STAKES FOR THEM AT THESE PROPER LOCATIONS WITH STATIONING PLANNED MARKS. ANY CHANGES IN LOCATION SHALL BE REQUESTED IN WRITING BY THE OWNER OR HIS REPRESENTATIVE.
  - NO REVISIONS SHALL BE MADE IN THESE PLANS WITHOUT THE APPROVAL OF THE COUNTY ENGINEER.
  - USE STANDARD MANHOLE FRAMES AND COVERS, S.A. 117, EXCEPT AS NOTED.
  - USE STANDARD STRENGTH PIPE EXCEPT AS NOTED.
  - USE CEMENT MORTAR FOR ALL VITRIFIED CLAY PIPE JOINTS.
  - RESURFACE ALL TRENCH WITHIN PAVED AREA TO MEET L.A. COUNTY ROAD DEPT., OR CALIF. STATE HIGHWAY DEPT. REQUIREMENTS IN ACCORDANCE WITH PERMITS.
  - ENCASE FOUR FEET OF SEWER AT POINTS OF INTERFERENCE WITH POLES, S.A. 119.
  - Y'S TO BE LAID HORIZONTAL & HOUSE LATERALS TO BE CONSTRUCTED WITH  $\frac{1}{4}$ " RISE PER FOOT TO EDGE OF R/W
  - ALL STRUCTURES SHALL BE BUILT BY THE STRUCTURE S.A. 104, EXCEPT AS NOTED.
  - FOR ALLOWABLE SPREADS REFER TO FORMULA NO. 1, SPEC. SEC. 54
  - MANHOLE TOPS IN UNIMPROVED RIGHTS-OF-WAY TO BE LEVED WITH SURROUNDING CORNER.
  - THE PRIVATE ENGINEER SHALL FURNISH THE HOUSE LATERAL DEPTH AT THE PROPERTY LINE BELOW THE ELEVATION OF CENTER LINE OF SEWER RIGHT OF WAY FOR EACH HOUSE LATERAL, ON THE GRADE SHEET.



INDEX MAP  
 Scale 1" = 600'  
 RC 4151

COLLECT CHARGE  
 AS INDICATED  
*C. Carter 11-16-56*

NOTES:

GRADES TO WHICH THIS IMPROVEMENT IS TO BE CONSTRUCTED ARE SHOWN ON PLANS AND PROFILES. GRADE POINTS FOR TOP OF CURBS, CENTER LINE OF STRIKES, OR CENTER LINE OF ALLEYS ARE SHOWN BY CIRCLES OR TRIANGLES. AT ALL POINTS BETWEEN DESIGNATED POINTS THE GRADE SHALL BE ESTABLISHED SO AS TO CONFORM TO A STRAIGHT LINE DRAWN BETWEEN SAID DESIGNATED POINTS.

ELEVATIONS ARE IN FEET ABOVE U.S.C. & G.S. SEA LEVEL, DATUM OF 1929.

THIS DRAWING AND THE DATA HEREON ARE HEREBY MADE A PART OF THE SPECIFICATIONS.

BEFORE WORK CAN BE STARTED, THE CONTRACTOR MUST OBTAIN A PERMIT TO EXCAVATE IN COUNTY STREETS FROM THE COUNTY ROAD DEPT., 108 W. 5TH ST. AND MAKE A REPORT WITH THE COUNTY ENGINEER, ROOM 234 PAN AMERICAN BUILDING, 234 SO. BROADWAY, SAN FRANCISCO, CALIF. THE COST OF CONSTRUCTION INSPECTION AND RECORD PLANS APPROVAL OF THIS PLAN BY THE COUNTY OF LOS ANGELES DOES NOT CONSTITUTE A REPRESENTATION AS TO THE ACCURACY OF THE LOCATION OF OR THE EXISTENCE OR NON-EXISTENCE OF ANY UNDERGROUND UTILITY PIPE, OR STRUCTURE WITHIN THE LIMITS OF THIS PROJECT. THIS NOTE APPLIES TO ALL PAGES.

IF WORK IS TO BE DONE IN A STATE HIGHWAY, A PERMIT MUST BE OBTAINED FROM THE STATE OF CALIFORNIA, DIVISION OF HIGHWAYS, 126 BOWNE SPRING STREET.

COUNTY OF LOS ANGELES, CALIFORNIA

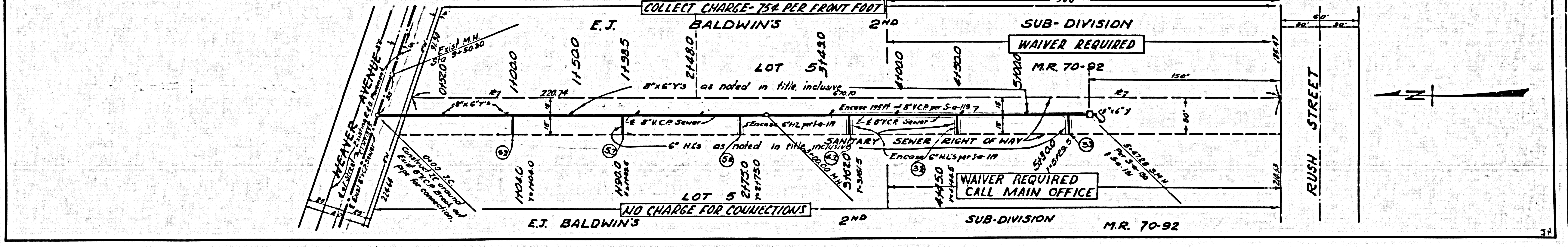
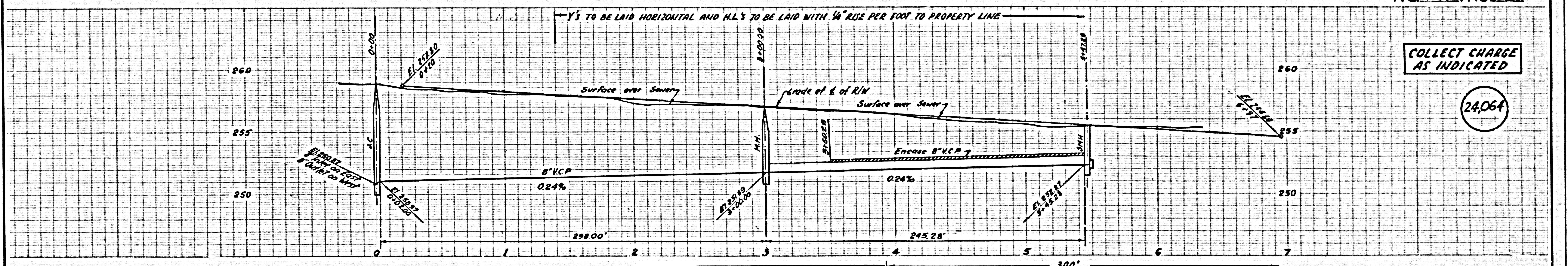
APPROVED, JOHN A. LAMBE, COUNTY ENGINEER  
 APPROVED, A. M. BAWN, CHIEF ENGINEER

*A. P. Keller* *A. M. Bawn*  
 SANITARY ENGINEER CHIEF ENGINEER

CHECKED BY *P. P. Miller* 11-17-56  
 OFFICE OF COUNTY ENGINEER, 888 C.E. NO. 7866

*Revised 1-30-57 W. Loren*

P.C. 4151 PAGE 2



34