

**CAPITAL PROJECT NO. 8773**  
 PROFILE ALIGNMENT AND GRADE OF  
**SANITARY SEWERS**  
 TO BE CONSTRUCTED IN  
**ARCADIA COUNTY PARK**  
 SANTA ANITA AVE. & HUNTINGTON DR.  
 ARCADIA, CALIF.  
 PRIVATE CONTRACT NO. 4152

24.571

SHEET 1 OF 2 SHEETS  
 VERT. SCALE: 1" = 4'  
 HORIZ. SCALE: 1" = 40'      OCTOBER 1956

COUNTY OF LOS ANGELES, CALIFORNIA  
 COUNTY ENGINEER  
 JOHN A. LAMBIE  
 APPROVED: *[Signature]*  
 ASSISTANT COUNTY ENGINEER  
 APPROVED: *[Signature]*  
 A. M. RAWN  
 OFFICE ENGINEER

FOR LEGEND  
 SEE PLAN NO. S-444

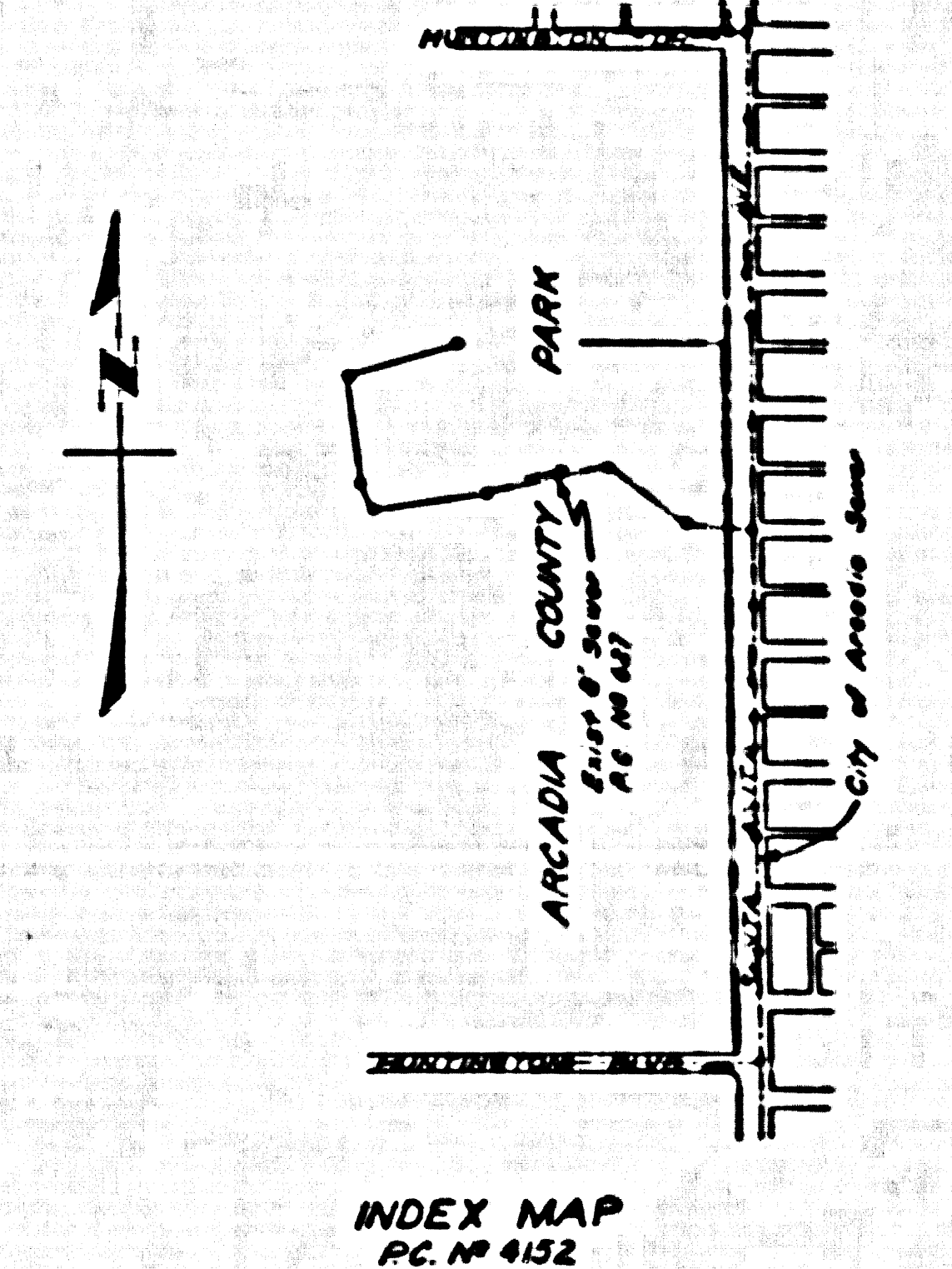
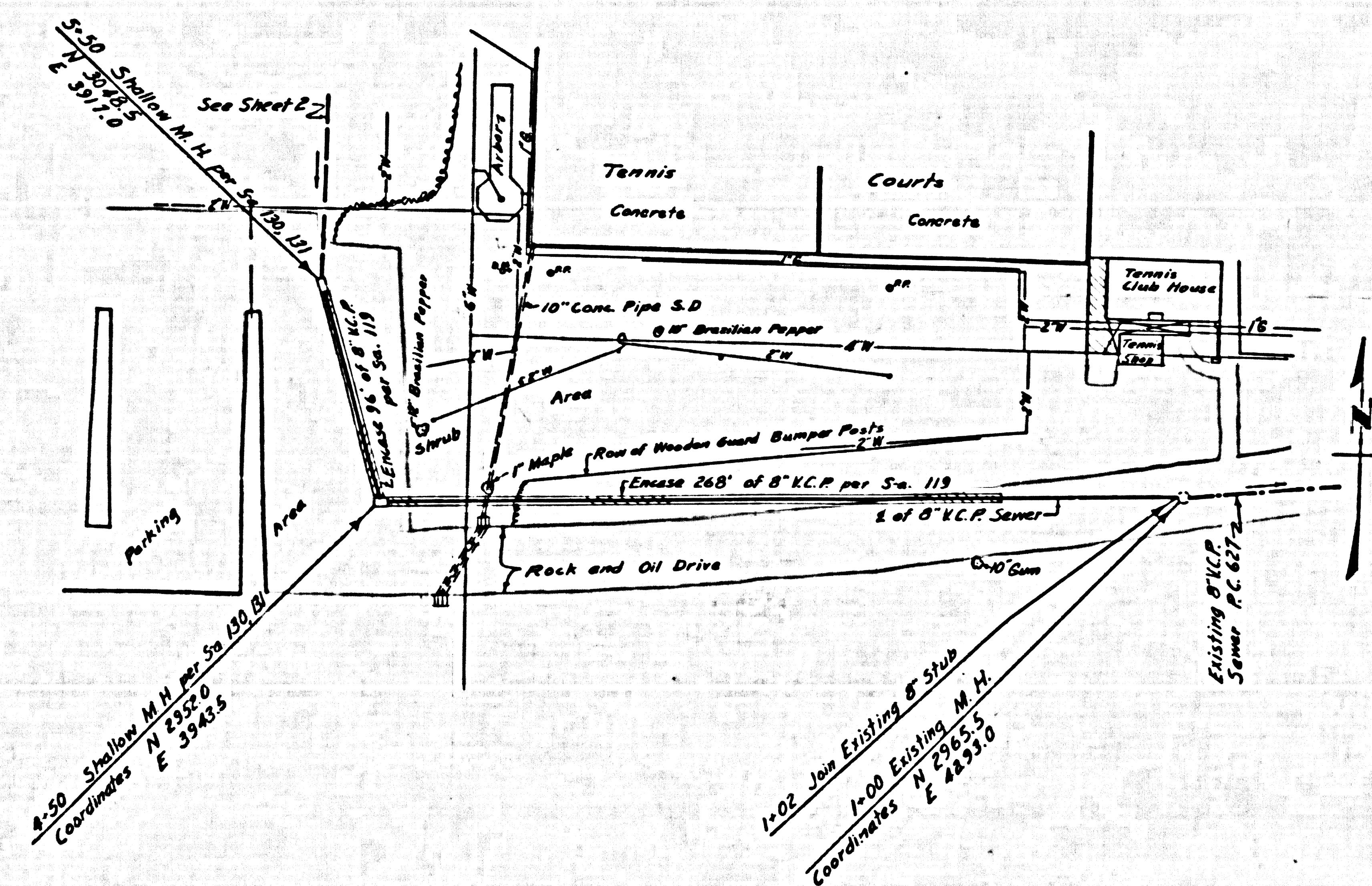
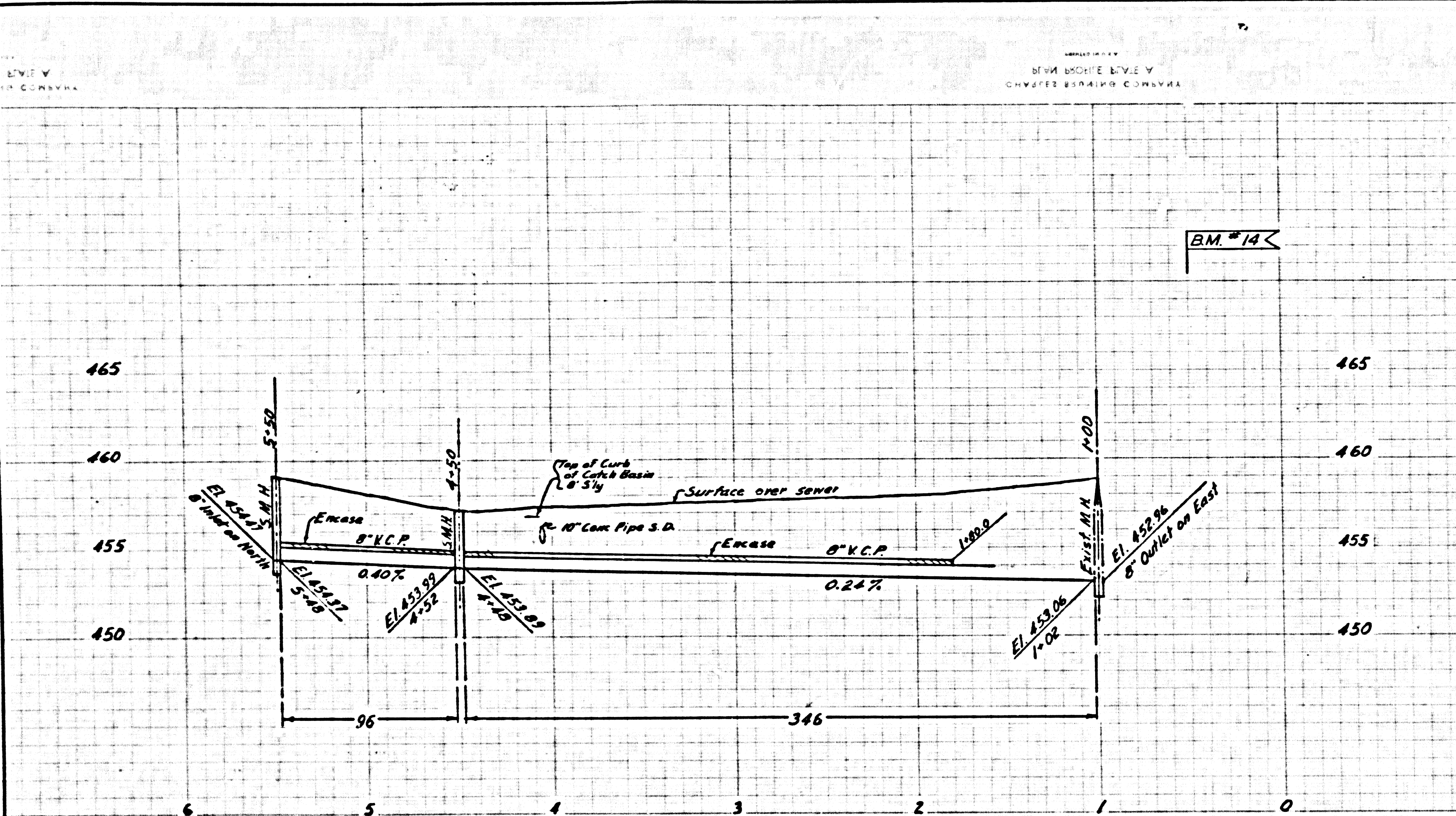
NOTE: GRADES TO WHICH THIS IMPROVEMENT IS TO BE CONSTRUCTED ARE SHOWN ON PLANS AND PROFILES BY CIRCLES OR POINTS FOR TOP OF CURB, CENTER LINE OF STREET OR CENTER LINE OF ALLEY ARE SHOWN BY CIRCLES ON PROFILES. AT ALL POINTS BETWEEN DESIGNATED POINTS THE GRADE SHALL BE ESTABLISHED SO AS TO CONFORM TO A STRAIGHT LINE BETWEEN DESIGNATED POINTS. ELEVATIONS ARE IN FEET ABOVE U.S.C.T.S. SEA LEVEL. DATA OF THIS PROJECT FOR ADDITIONAL WORK WHICH MAY BE REQUIRED BUT WHICH SHOULD BE ASCERTAINED IN ADVANCE SHALL BE SUBMITTED BY THE PROPOSOR. THIS DRAWING AND THE DATA HEREON ARE HEREBY MADE A PART OF THE SPECIFICATIONS.

| REFERENCES                   |          |           |
|------------------------------|----------|-----------|
| W. S. 45                     | DESIGNED | KRIEGL    |
| TOPOGRAPHIC MAPS D 334, D335 | TRACED   | ESQUER    |
|                              | CHECKED  | SNELSER   |
|                              |          | SEPT 1956 |
|                              |          | OCT 1956  |

BM #16, Elev = 460.350, F.B. 388 pg 18  
 C.S. Mon. Coordinates: N3133.50, E3389.00

BM #17, Elev = 466.202, F.B. 388 pg 19  
 C.S. Mon. Coordinates: N3578.00, E4089.00

USE STANDARD STRENGTH PIPE  
 USE CEMENT MORTAR FOR ALL VITRIFIED CLAY PIPE JOINTS  
 ALL STRUCTURES SHALL BE BRICK SEWER STRUCTURES AS PER PLAN NO. S-4-104 EXCEPT AS NOTED  
 USE STANDARD MANHOLE FRAMES AND COVERS AS PER PLAN NO. S-4-117 EXCEPT AS NOTED  
 RESURFACE TRENCH WITHIN PAVED AREA WITH PREMIUM ROCK AND OIL 2" IN THICKNESS  
 USE FORMULA NO. 1 SEC. 81 OF SPECIFICATIONS TO COMPUTE ALLOWABLE LEAKAGE





24.572

BM # 17

