

LANCASTER BLDG. DIST. NO. 8

PROFILE ALIGNMENT AND GRADE OF P.C. 4153  
 SANITARY SEWERS PAGE 1  
 TO BE CONSTRUCTED IN

TRACT No 20661

PRIVATE CONTRACT NO. 4153

W.S. 71

2 SHEETS, 4 PAGES

SCALE: 1" = 10' SEPTEMBER, 1956

24,082

PREPARED IN THE OFFICES OF  
 ROSENTHAL ENGINEERING CO. (4)

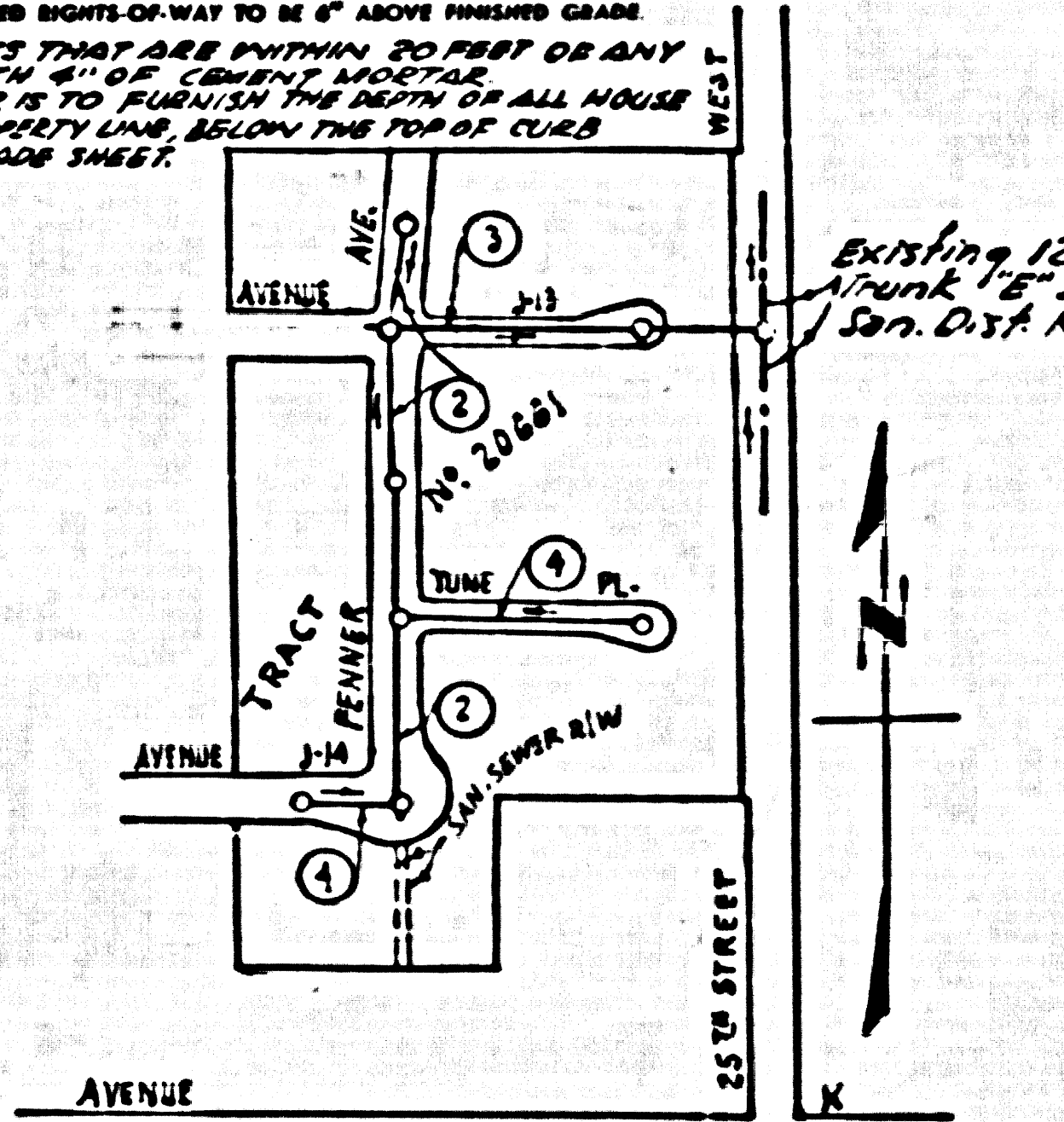
BY: *Arthur J. Rosenthal*  
 REG. C. E. NO. 8066

FOR LEGEND SEE PLAN NO. S-A-64

(U.S. B.M. R-49) F.B. 181- Pg. 10 - B.M. U.S. 1630  
 T. 7N., R. 13W., Near 1/4 corner between Sec. 25 & 36  
 NORTH of POLE LINE, 36' N. & 36' W. at 1/4 corner.  
 CONCRETE POST WITH BRONZE TABLET 49-1929, Elev. 2428.76

NO CHARGE  
 FOR CONNECTIONS  
*LANCASTER 10-3-56*

- NOTE:  
 PROVIDE STAKES ON THE PROPERTY LINE OR PROPERTY LINES PRODUCED AT RIGHT ANGLES TO THE SEWER LINE AT THE CENTER LINE OF EACH MANHOLE.
- NO REPRESENTATIVE OF THE COUNTY ENGINEER WILL SURVEY OR LAYOUT ANY PORTION OF THE WORK.
- THE OWNER OR HIS AUTHORIZED REPRESENTATIVE SHALL FURNISH THE COUNTY ENGINEER WITH GRADE SHEETS AND STATION FOR ALL HOUSE LATERALS AND Y BRANCHES AND SHALL PROVIDE STAKES FOR THEM AT THEIR PROPER LOCATIONS WITH STATIONING PLAINLY MARKED. ANY CHANGE IN LOCATION SHALL BE REQUESTED IN WRITING BY THE OWNER OR HIS REPRESENTATIVE.
- NO REVISIONS SHALL BE MADE IN THESE PLANS WITHOUT THE APPROVAL OF THE COUNTY ENGINEER.
- USE STANDARD MANHOLE FRAMES AND COVERS, S.A-117, EXCEPT AS NOTED.
  - USE STANDARD STRENGTH PIPE EXCEPT AS NOTED.
  - USE CEMENT MORTAR FOR ALL VITRIFIED CLAY PIPE JOINTS.
  - RESURFACE ALL TRENCH WITHIN PAVED AREA TO MEET L. A. COUNTY ROAD DEPT., OR CALIF. STATE HIGHWAY DEPT. REQUIREMENTS IN ACCORDANCE WITH PERMITS.
  - ENCASE FOUR FEET OF SEWER AT POINTS OF INTERFERENCE WITH POLES, S-A-119.
  - HOUSE LATERALS TO BE CONSTRUCTED WITH INVERTS AT PROPERTY LINE 8 FEET BELOW CURB GRADE EXCEPT AS NOTED.
  - ALL STRUCTURES SHALL BE BRICK SEWER STRUCTURES, S-A-184, EXCEPT AS NOTED.
  - FOR ALLOWABLE LEAKAGE TEST USE FORMULA NO. 1, SECC. SEC. 18.
  - MANHOLE TOPS IN UNIMPROVED AREAS OR WAYS TO BE 6" ABOVE FINISHED GRADE.
  - CALL ALL PIPE JOINTS THAT ARE WITHIN 20 FEET OR ANY PROPERTY LINE WITH 6" OF CURB GRADE.
  - THE PRIVATE ENGINEER IS TO FURNISH THE DEPTH OF ALL HOUSE LATERALS AT THE PROPERTY LINE, BELOW THE TOP OF CURB ELEVATION, ON THE GRADE SHEET.



INDEX MAP  
 TRACT No 20661 - P.C. 4153  
 SCALE: 1" = 300'

Before breaking into any existing structure  
 and before final acceptance of this work,  
 County Sanitation District should be notified  
 in order that required inspection may be made.

*Checked 2-7-57 McLaren*

NOTE:  
 GRADES TO WHICH THIS IMPROVEMENT IS TO BE CONSTRUCTED ARE SHOWN ON PLANS AND PROFILES. GRADE POINTS FOR TOP OF CURB, CENTER LINE OF STREETS, OR CENTER LINE OF ALLEYS ARE SHOWN BY CIRCLES ON PROFILES. AT ALL POINTS BETWEEN INDICATED POINTS THE GRADE SHALL BE ESTABLISHED SO AS TO CONFORM TO A STRAIGHT LINE DRAWN BETWEEN SAID INDICATED POINTS.

REVISIONS ARE IN FULL ACCORDANCE WITH THE DATE OF 1956.

THIS DRAWING AND THE DATA HEREON ARE HEREBY MADE A PART OF THE SPECIFICATION.

WORK SHALL BE CONSTRUCTED ACCORDING TO SPECIFICATIONS ON FILE IN THE OFFICE OF THE COUNTY ENGINEER AND SHALL BE PROSECUTED UNDER THE REGULATION OF THE COUNTY ENGINEER.

BEFORE WORK CAN BE STARTED, THE CONTRACTOR MUST OBTAIN A PERMIT TO EXCAVATE IN COUNTY STREETS FROM THE L. A. COUNTY ROAD DEPT., 128 W. 2ND ST. AND MAKE A DEPOSIT WITH THE COUNTY ENGINEER, ROOM 324 PAIN AMERICAN BUILDING, 338 SO. HOUGHTON AVENUE TO COVER THE COST OF CONSTRUCTION INSPECTION AND SECOND PLANS.

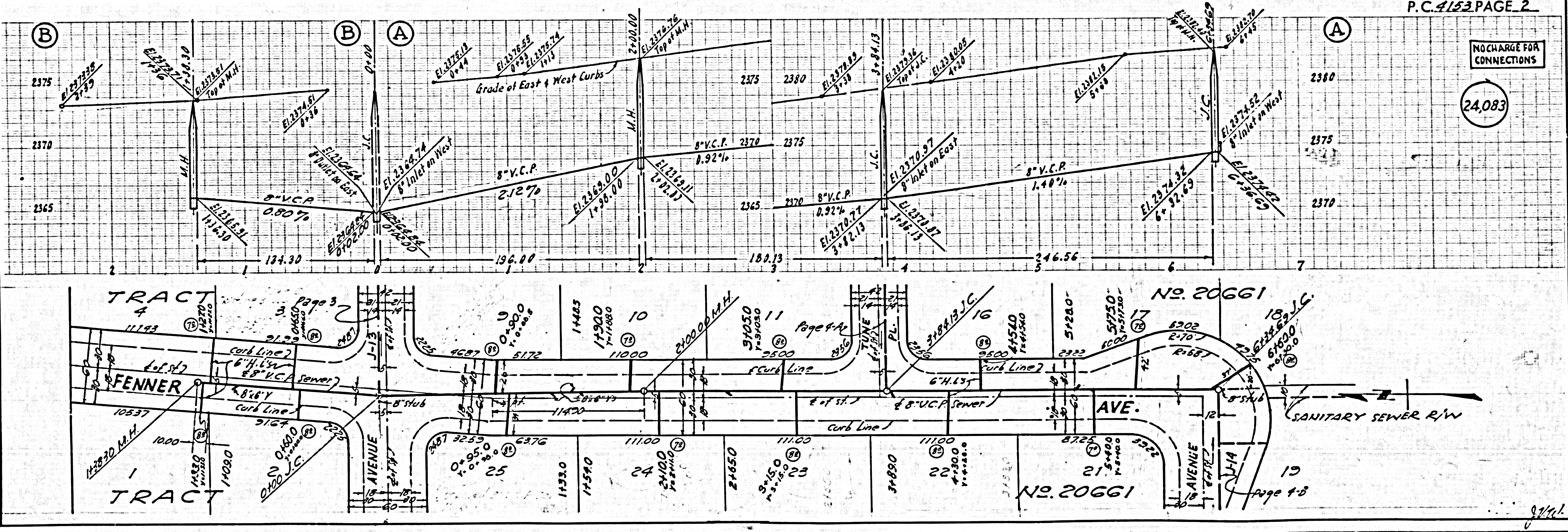
APPROVAL OF THIS PLAN BY THE COUNTY OF LOS ANGELES DOES NOT CONSTITUTE A REPRESENTATION AS TO THE ACCURACY OF THE LOCATION OF OR THE EXISTENCE OR NON-EXISTENCE OF ANY UNDERGROUND UTILITY PIPE, OR STRUCTURE WITHIN THE LIMITS OF THIS PROJECT. THIS NOTE APPLIES TO ALL PAGES.

IF WORK IS TO BE DONE IN A STATE HIGHWAY, A PERMIT MUST BE OBTAINED FROM THE STATE OF CALIFORNIA, DIVISION OF HIGHWAYS, 128 SOUTH SPRING STREET.

COUNTY OF LOS ANGELES, CALIFORNIA

APPROVED, JOHN A. LAMBE, COUNTY ENGINEER  
 APPROVED, A. M. BAWN, CHIEF ENGINEER  
 BY: *A. P. Collins* (SANITATION ENGINEER) BY: *J. P. ...* (OFFICE ENGINEER)  
 CHECKED BY: *Reph...* 10-4-56  
 OFFICE OF COUNTY ENGINEER, REG. C. E. NO. 7860

P.C. 4153 PAGE 2

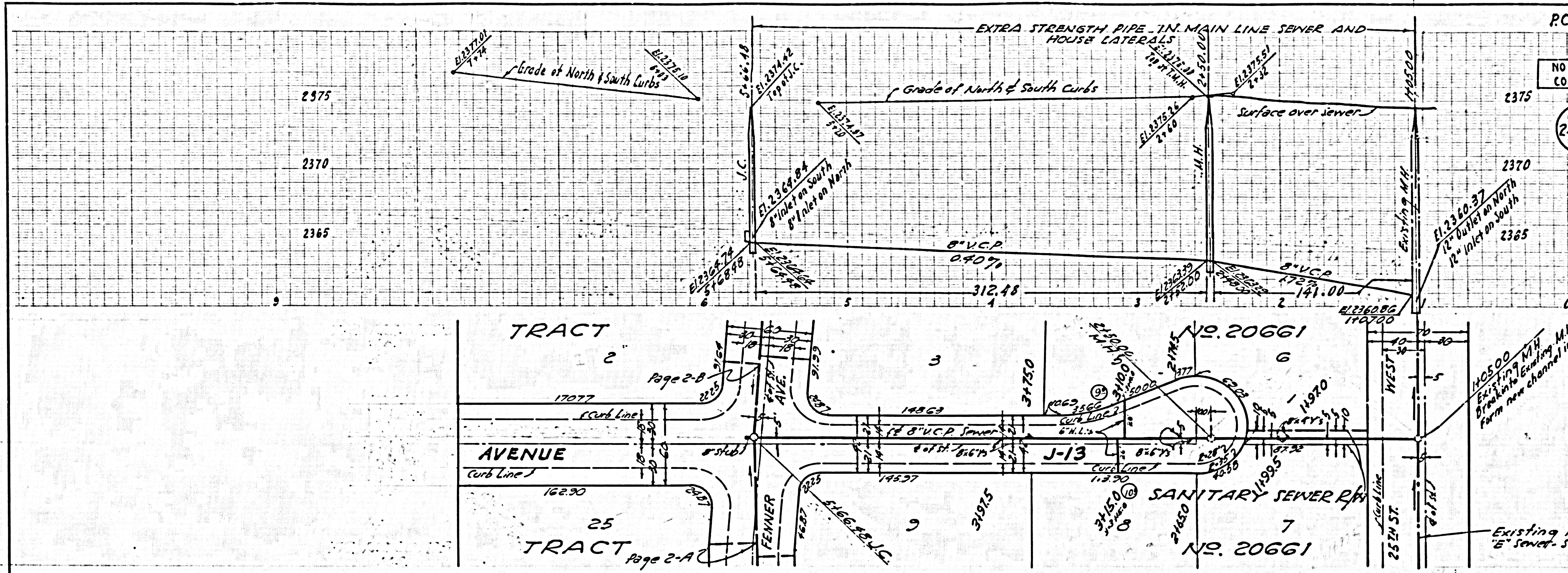


NO CHARGE FOR CONNECTIONS  
 24,083



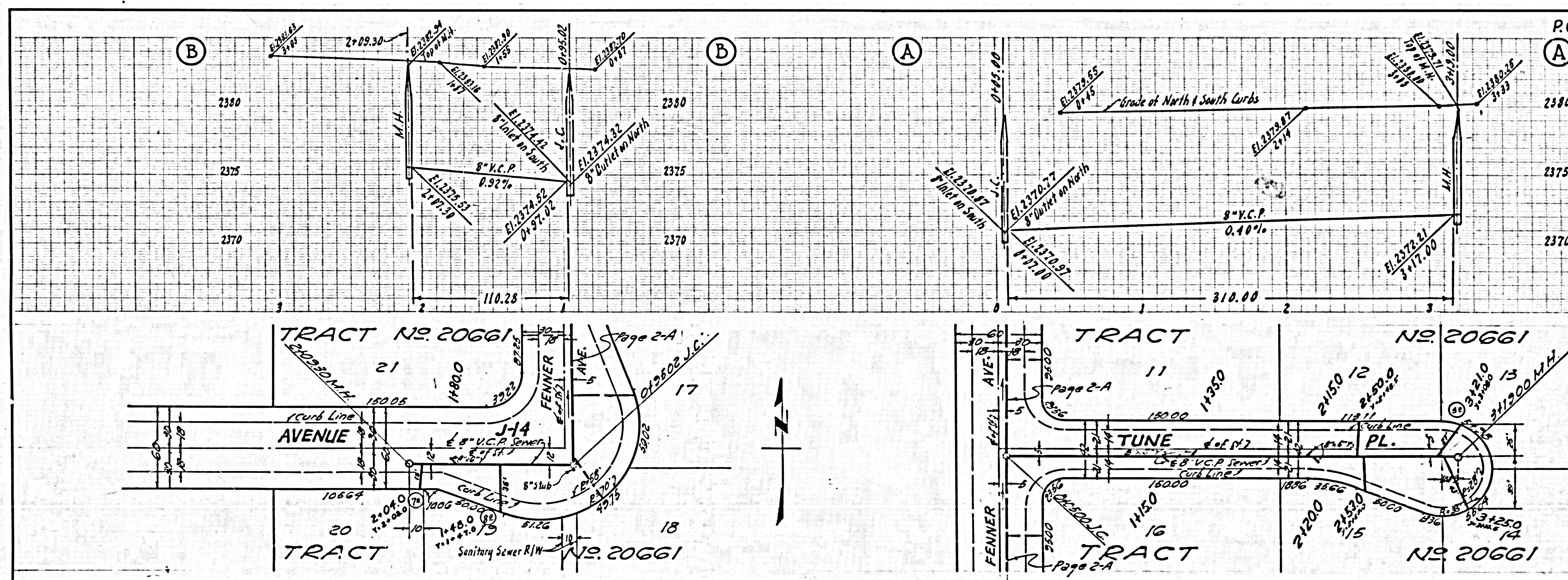
NO CHARGE FOR CONNECTIONS

24,084



NO CHARGE FOR CONNECTIONS

24,085



PC 4123 TRACT NO 20661