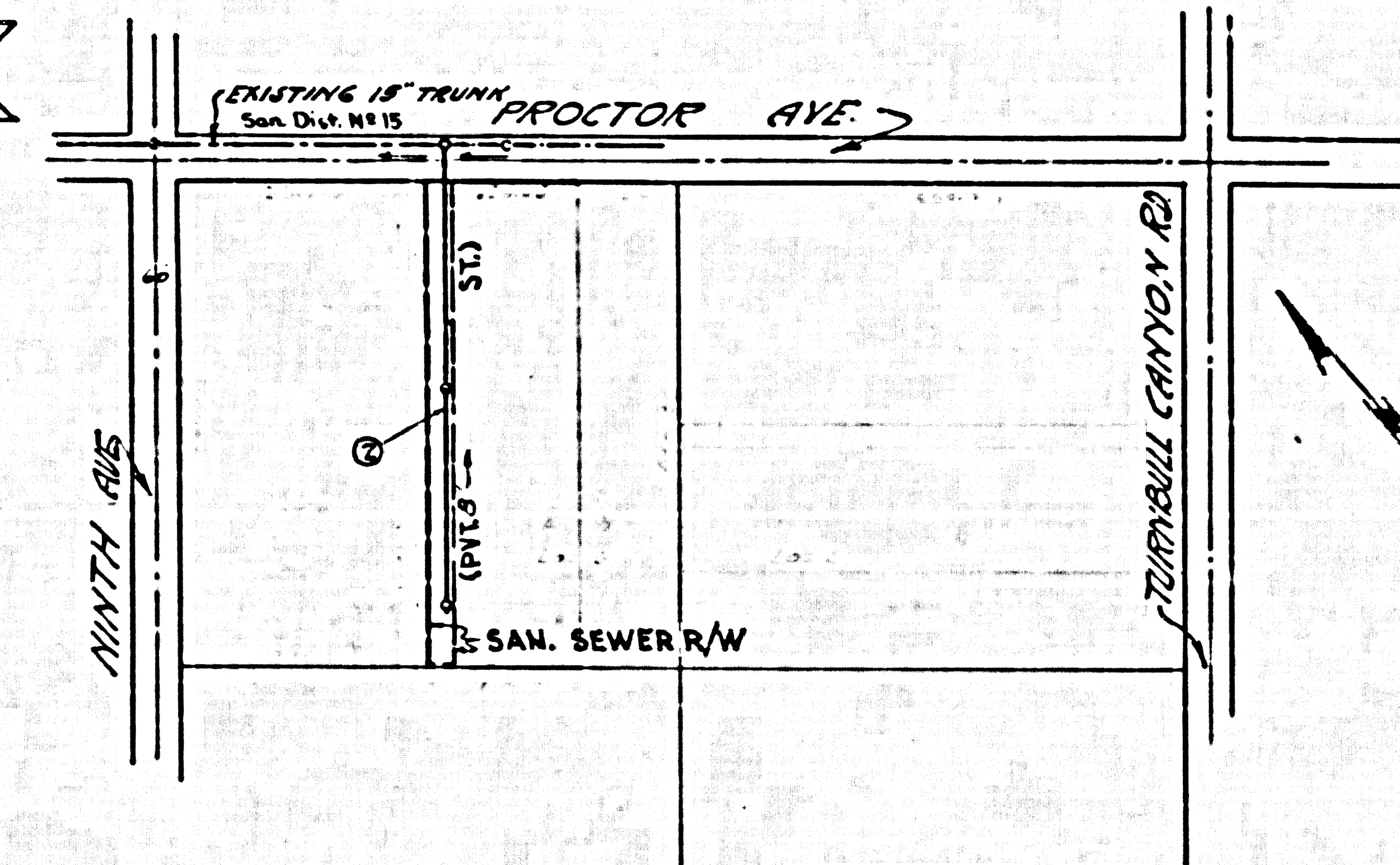


B.M. L.S. 307.045
 R.R. Spk. N. Side P.P. #48016E
 S.E. COR. Proctor & 9th AVE.



INDEX MAP
 Scale 1/2" = 300'
 P.C. 4154

PUENTE BLDG. DIST. NO. 2

- NOTE:
 PROFILE GRADES ON THE PROPERTY LINE OR PROPERTY LINES PRODUCED AT RIGHT ANGLES TO THE SEWER LINE AT THE CENTER LINE OF EACH MANHOLE.
 NO REPRESENTATIVE OF THE COUNTY ENGINEER WILL SURVEY OR LAYOUT ANY PORTION OF THE WORK.
 THE OWNER OR HIS AUTHORIZED REPRESENTATIVE SHALL FURNISH THE COUNTY ENGINEER WITH GRADE SHEETS AND STATION FOR ALL HOUSE LATERALS AND V BRANCHES AND SHALL PROVIDE STAKES FOR THEM AT THESE PLACES LOCATIONS WITH STATION AND PLAINLY MARKED. ANY CHANGE IN LOCATION SHALL BE REQUESTED BY WRITING BY THE OWNER OR HIS REPRESENTATIVE.
 NO REVISIONS SHALL BE MADE IN THESE PLANS WITHOUT THE APPROVAL OF THE COUNTY ENGINEER.
1. USE STANDARD MANHOLE FRAMES AND COVERS, S.A. 117, EXCEPT AS NOTED.
 2. USE STANDARD STRENGTH PIPE EXCEPT AS NOTED.
 3. USE CEMENT STRENGTH PLUS AN YTTIMED CLAY PIPE JOINTS.
 4. RESURFACE ALL TRENCH WITHIN PAVED AREA TO MEET L. A. COUNTY ROAD DEPT., OR CALIF. STATE HIGHWAY DEPT. REQUIREMENTS IN ACCORDANCE WITH PERMITS.
 5. SHOW FOUR FEET OF SEWER AT POINTS OF INTERFERENCE WITH POLES, S.A. 117.
 6. STRUCTURES SHALL BE BRICK SEWER STRUCTURES, S.A. 104, EXCEPT AS NOTED.
 7. FOR ALLOWABLE SLOPES USE FORMULA NO. _____, SPEC. S, SEC. 5.
 8. MANHOLE TOPS IN UNIMPROVED RIGHTS-OF-WAY TO BE 6" ABOVE FINISHED GRADE.

PROFILE ALIGNMENT AND GRADE OF P.C. 4154
 SANITARY SEWERS PAGE 1

TO BE CONSTRUCTED IN
 RIGHT OF WAY SOUTH OF PROCTOR AVENUE (2)

PRIVATE CONTRACT NO. 4154

W.S. 38
 1 SHEETS, 2 PAGES

SCALE: VERT. 1" = 4' HORIZ. 1" = 20' SEPT., 1956

PREPARED IN THE OFFICES OF
 CHAS. N. BELL-ENGINEER
 1121 S. Bell St.
 LOS ANGELES, CALIF. P.O. BOX 2852

FOR LEGEND SEE PLAN NO. S-A-64

NOTE:
 GRADES TO WHICH THIS IMPROVEMENT IS TO BE CONSTRUCTED ARE SHOWN ON PLANS AND PROFILES. GRADE POINTS FOR TOP OF CURB, CENTER LINE OF STREETS, OR CENTER LINE OF ALLEYS ARE SHOWN BY CIRCLES ON PROFILES AT ALL POINTS BETWEEN DESIGNATED POINTS. THE GRADE SHALL BE ESTABLISHED SO AS TO CONFORM TO A STRAIGHT LINE DRAWN BETWEEN SAID DESIGNATED POINTS.
 ELEVATIONS ARE IN FEET ABOVE U.S.C. & G.S. MEAN LEVEL, DATUM OF 1929.
 THIS DRAWING AND THE DATA HEREON AND HERETO SHALL BE A PART OF THE SPECIFICATIONS.
 WORK SHALL BE CONSTRUCTED ACCORDING TO SPECIFICATIONS ON P.C. 4154 IN THE OFFICE OF THE COUNTY ENGINEER AND SHALL BE PROSECUTED ONLY IN THE PRESENCE OF THE COUNTY ENGINEER.
 BEFORE WORK CAN BE STARTED, THE CONTRACTOR MUST OBTAIN A PERMIT TO EXCAVATE IN COUNTY STREETS FROM THE L. A. COUNTY ROAD DEPT., BE ISSUED BY AND MAKE A REPORT WITH THE COUNTY ENGINEER, ROOM 124 SAN JUAN AVENUE, ROOM 313 SO. BROADWAY SUFFICIENT TO COVER THE COST OF CONSTRUCTION INSPECTION AND RECORD PLANS.
 APPROVAL OF THIS PLAN BY THE COUNTY OF LOS ANGELES DOES NOT CONSTITUTE A REPRESENTATION AS TO THE ACCURACY OF THE LOCATION OF OR THE EXISTENCE OR NON-EXISTENCE OF ANY UNDERGROUND UTILITY PIPES OR STRUCTURES WITHIN THE LIMITS OF THIS PROJECT. THIS NOTE APPLIES TO ALL PAGES.
 IF WORK IS TO BE DONE IN A STATE HIGHWAY, A PERMIT MUST BE OBTAINED FROM THE STATE OF CALIFORNIA, DIVISION OF HIGHWAYS, 128 SOUTH SPRING STREET.

COUNTY OF LOS ANGELES, CALIFORNIA

APPROVED, JOHN A. LAMBE, COUNTY ENGINEER APPROVED, A. M. BAWN, CHIEF ENGINEER

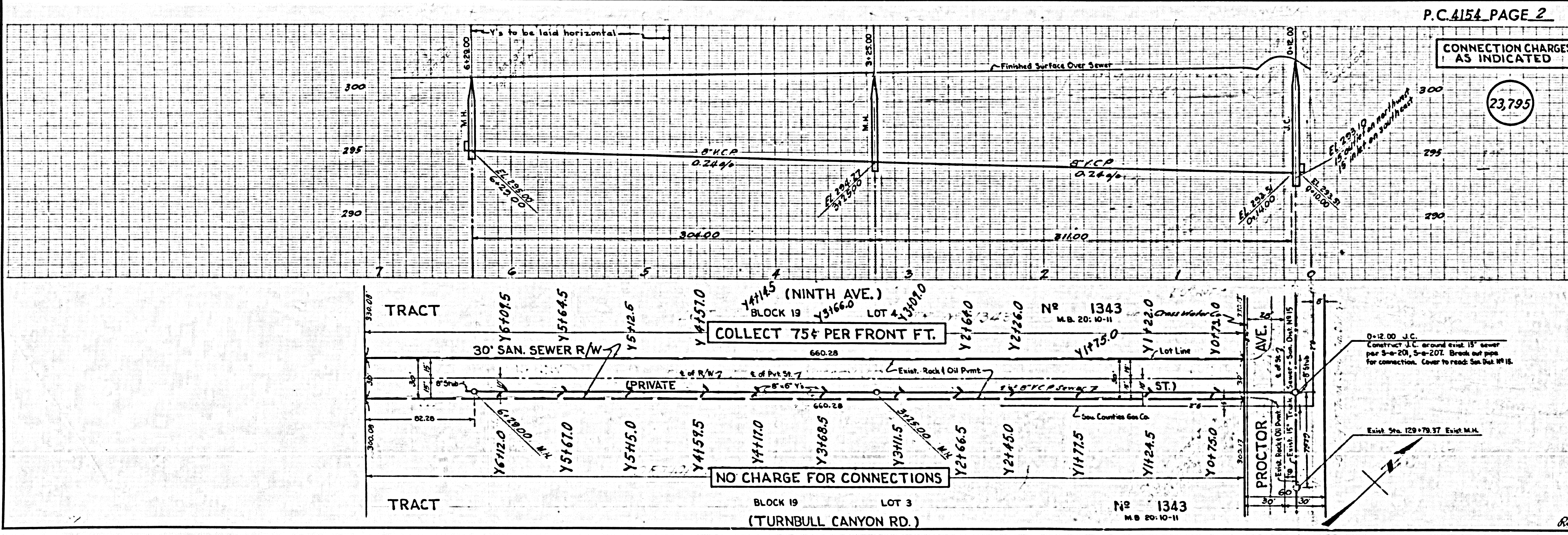
J.A. Lambe *A.M. Bawn*
 SANITATION ENGINEER OFFICE ENGINEER

CHECKED BY *R. Fisher* 11-21-56
 OFFICE OF COUNTY ENGINEER, S.A. C. & NO. 7860

CONNECTION CHARGES AS INDICATED
L. Curtis 10-9-56

Before breaking into any existing structure and before final acceptance of this work, County Sanitation District should be notified in order that required inspection may be made.

checked 12-18-56 Wofarum



P.C. 4154 PAGE 2

CONNECTION CHARGES AS INDICATED

23,795

TRACT BLOCK 19 (NINTH AVE.) LOT 4
 COLLECT 75¢ PER FRONT FT.

TRACT BLOCK 19 LOT 3 (TURNBULL CANYON RD.)
 NO CHARGE FOR CONNECTIONS

0+12.00 J.C.
 Construct J.C. around exist. 15" sewer per S-e-201, S-e-207. Break out pipe for connection. Cover to road: San. Dist. #115.

Exist. Sta. 129+79.37 Exist. M.M.

D-71450

RL