

B.M. - L.F. 2, Elev. 69.497, F.B. 1511, pg 262
 100' on Ave # 1605 St. 2" x 1" cur.
 8' Spk. in curb, 5' S. of S. end C.R.

LENNOX BLDG. DIST. NO. 7

- NOTE:
 PROVIDE 2" GAPS ON THE PROPERTY LINE OR PROPERTY LINE PRODUCED AT RIGHT ANGLES TO THE SEWER LINE AT THE CENTER LINE OF EACH MANHOLE.
 NO REPRESENTATIVE OF THE COUNTY ENGINEER WILL SURVEY OR LAYOUT ANY PORTION OF THE WORK.
 THE OWNER OR HIS APPOINTED REPRESENTATIVE SHALL FURNISH THE COUNTY ENGINEER WITH GRADE SHEETS AND STATION FOR ALL HOUSE LATERALS AND T. BRANCHES AND SHALL PROVIDE GRADE FOR THESE AS THEIR PROPER LOCATIONS WITH STATION AND PLAINLY MARKED. ANY CHANGE IN LOCATION SHALL BE REQUESTED IN WRITING BY THE OWNER OR HIS REPRESENTATIVE. NO REVISIONS SHALL BE MADE IN THESE PLANS WITHOUT THE APPROVAL OF THE COUNTY ENGINEER.
1. USE STANDARD MANHOLE FRAMES AND COVERS, S.A. 117, UNLESS OTHERWISE SPECIFIED.
 2. USE STANDARD STRENGTH PIPE UNLESS OTHERWISE SPECIFIED.
 3. USE CRUSHED ROCK FOR ALL VITRIFIED CLAY PIPE JOINTS.
 4. RESURFACE ALL TRENCH WITHIN PAVED AREA TO MEET L. A. COUNTY ROAD DEPT., OR CALIF. STATE HIGHWAY DEPT. REQUIREMENTS IN ACCORDANCE WITH PERMITS.
 5. INCASE FOUR FEET OF STOPS AT POINTS OF INTERSECTION WITH POLES, S.A. 118.
 6. HOUSE LATERALS TO BE CONSTRUCTED WITH 1/2" RISE PER FOOT TO PROPERTY LINE.
 7. ALL STRUCTURES SHALL BE BUILT IN ACCORDANCE WITH S.A. 114, UNLESS OTHERWISE SPECIFIED.
 8. FOR ALLOWABLE LEAKAGE TEST USE FORMULA NO. 1, S.P.C.E., INC. 54.
 9. MANHOLE TOPS IN UNPAVED AREAS OR ON WAY TO BE 6" ABOVE FINISHED GRADE.
 10. THE PRIVATE ENGINEER IS TO FURNISH ON THE GRADE SHEET ALL DEPTHS OF HOUSE LATERALS AT THE PROPERTY LINE, BELOW THE TOP OF CURB ELEVATION FOR EACH HOUSE LATERAL.

PROFILE ALIGNMENT AND GRADE OF **P.C. 4157**
SANITARY SEWERS PAGE **1**

TO BE CONSTRUCTED IN
160TH STREET
161ST STREET
162ND STREET

PRIVATE CONTRACT NO. 4157

W.S. 25

- 2 SHEETS, 3 PAGES

SCALE: VERT. 1" = 4' HORIZ. 1" = 40' **SEPT. 1956**

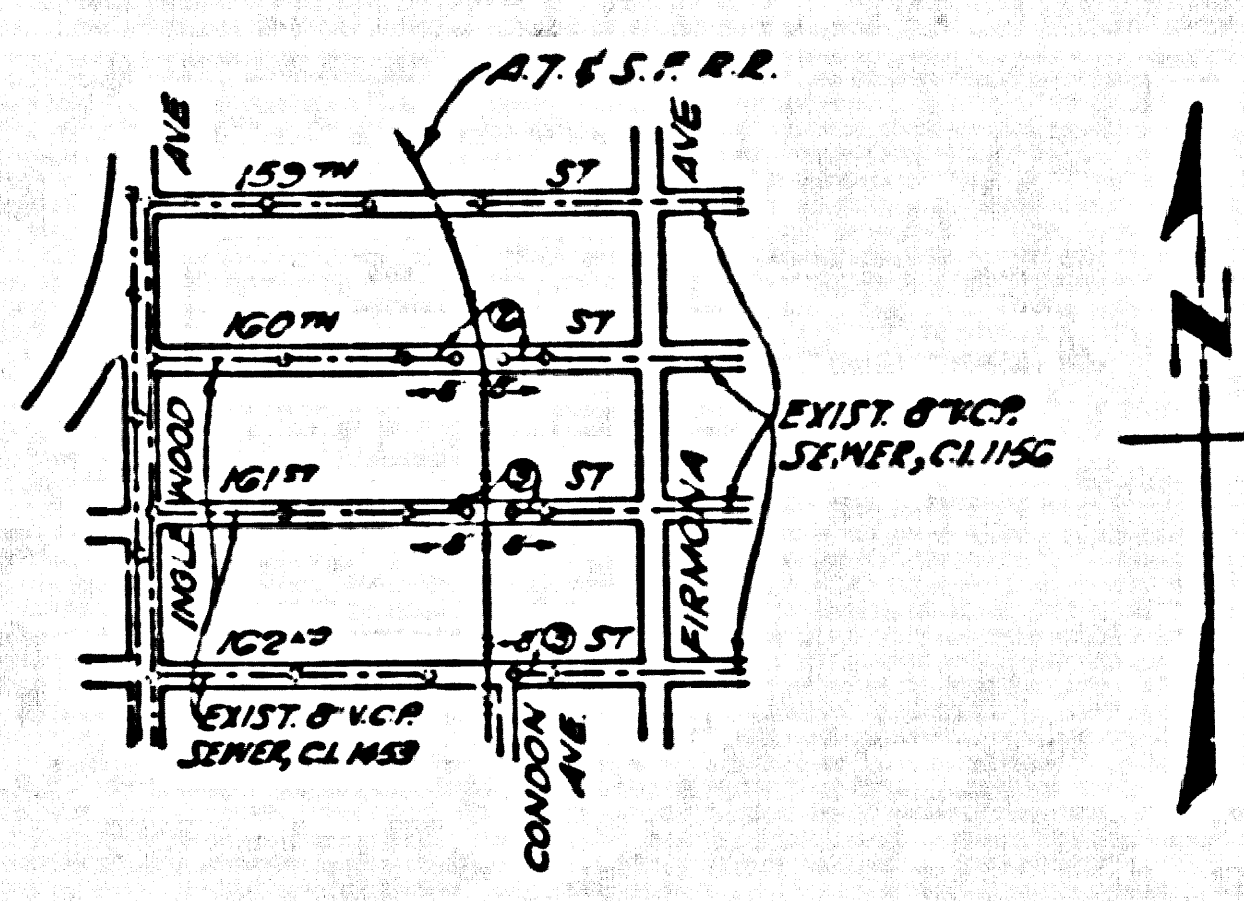
23507

PREPARED IN THE OFFICES OF

HARRY GILBERT

BY *[Signature]* REG. C. E. NO. 7797

FOR LEGEND SEE PLAN NO. S-A-64



INDEX MAP
P.C. 4157

SCALE: 1" = 600'

COLLECT CHARGES
AS INDICATED
[Signature] 9-18-56

checked 10-9-56 McLaren

NOTE:
 GRADES TO WHICH THIS IMPROVEMENT IS TO BE CONSTRUCTED ARE SHOWN ON PLANS AND PROFILES. GRADE POINTS FOR TOP OF CURB, CENTER LINE OF STREETS OR CENTER LINE OF ALLEYS ARE SHOWN BY CIRCLES ON PROFILES. AT ALL POINTS BETWEEN BENCHMARK POINTS THE GRADE SHALL BE ESTABLISHED SO AS TO CONFORM TO A STRAIGHT LINE DRAWN BETWEEN SAID BENCHMARK POINTS.
 ELEVATIONS ARE IN FEET ABOVE U.S.C. & G.S. MEAN LEVEL DATUM OF 1929.
 THIS DRAWING AND THE DATA HEREON ARE HEREBY MADE A PART OF THE SPECIFICATIONS.
 WORK SHALL BE CONSTRUCTED ACCORDING TO SPECIFICATIONS ON FILE IN THE OFFICE OF THE COUNTY ENGINEER AND SHALL BE PROSECUTED ONLY IN THE PRESENCE OF THE COUNTY ENGINEER.
 BEFORE WORK CAN BE STARTED, THE CONTRACTOR MUST OBTAIN A PERMIT TO EXCAVATE IN COUNTY SPACES FROM THE L. A. COUNTY ROAD DEPT., 100 W. 3RD ST. AND MAKE A REPORT WITH THE COUNTY ENGINEER, ROOM 204 SAN ANTONIO BUILDING, 25 SO. HOUGHTON ST. TO COVER THE COST OF CONSTRUCTION INSPECTION AND RECORD PLANS.
 APPROVAL OF THIS PLAN BY THE COUNTY ENGINEER DOES NOT CONSTITUTE A REPRESENTATION AS TO THE ACCURACY OF THE LOCATION OF OR THE EXISTENCE OR NON-EXISTENCE OF ANY UNDERGROUND UTILITY PIPE, OR STRUCTURE WITHIN THE LIMITS OF THIS PROJECT. THIS NOTE APPLIES TO ALL PAGES.
 IF WORK IS TO BE DONE IN A STATE HIGHWAY, A PERMIT MUST BE OBTAINED FROM THE STATE OF CALIFORNIA, DIVISION OF HIGHWAYS, 120 SOUTH SPRING STREET.

COUNTY OF LOS ANGELES, CALIFORNIA

APPROVED, JOHN A. LAMBE, COUNTY ENGINEER

APPROVED, A. M. BAWN, CHIEF ENGINEER

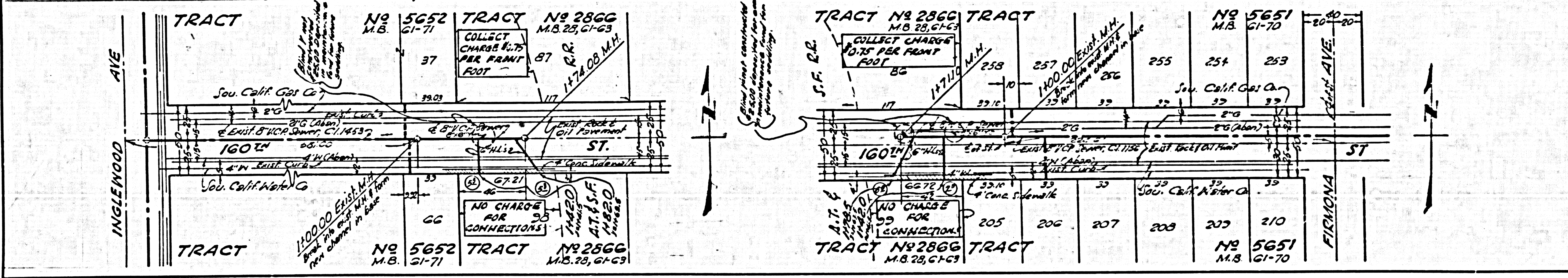
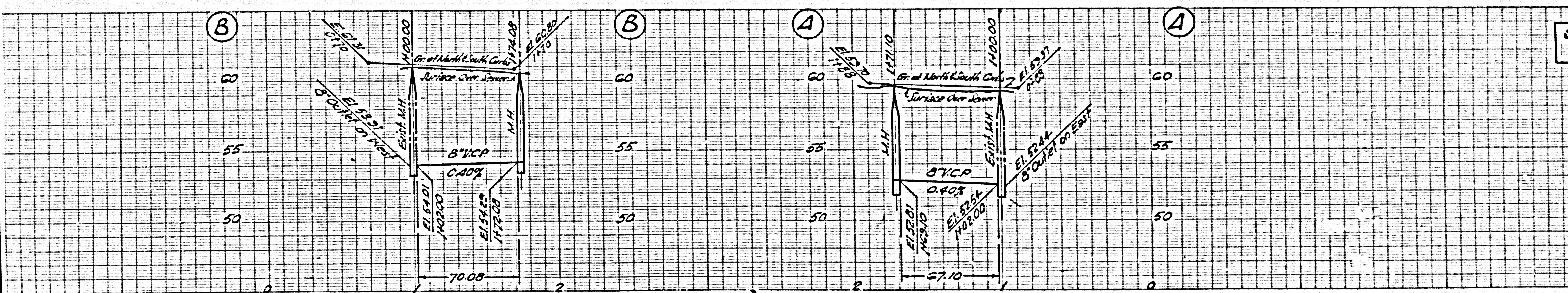
BY *[Signature]* BY *[Signature]*

CHECKED BY *[Signature]* 9-18-56
 OFFICE OF COUNTY ENGINEER, S.B. C. & NO. 2462

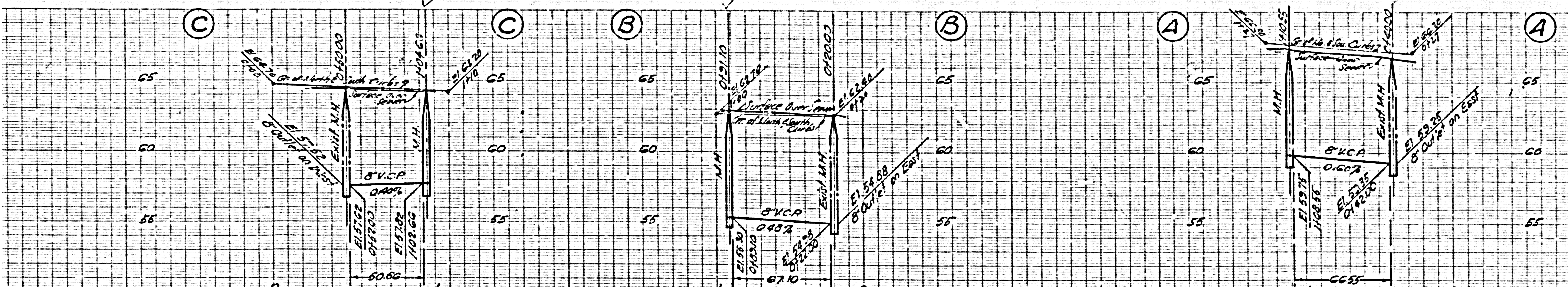
P.C. 4157 PAGE 2

COLLECT CHARGES
AS INDICATED

23508

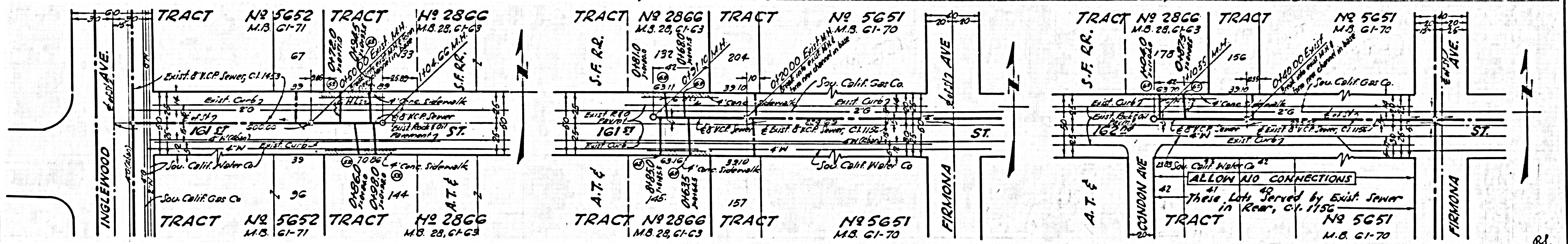


TRACT NO 5652 M.B. 51-71 TRACT NO 2866 M.B. 28, 61-63 TRACT NO 5651 M.B. 51-70
 INGLEWOOD AVE 160TH ST 161ST ST 162ND ST FIRMONA AVE
 NO CHARGE FOR CONNECTIONS
 COLLECT CHARGE 10.75 PER FOOT PER MANHOLE
 100' EXIST. M.H. 117.00 STATION

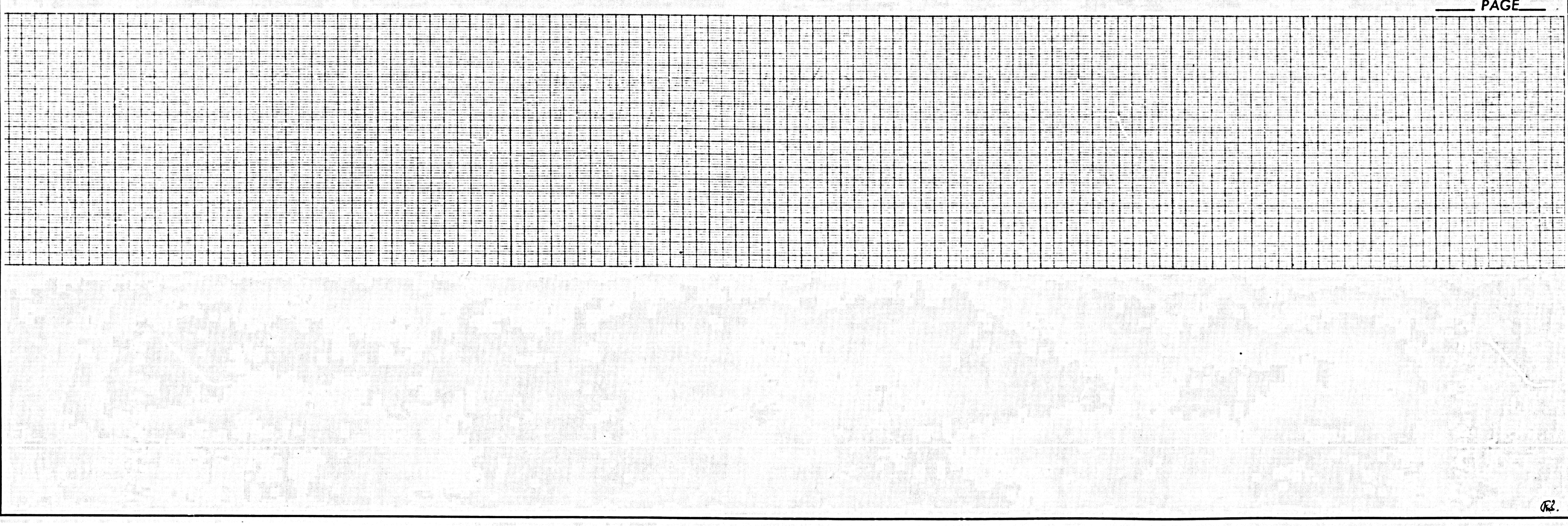


NO CHARGE FOR CONNECTIONS

23,500



81



82