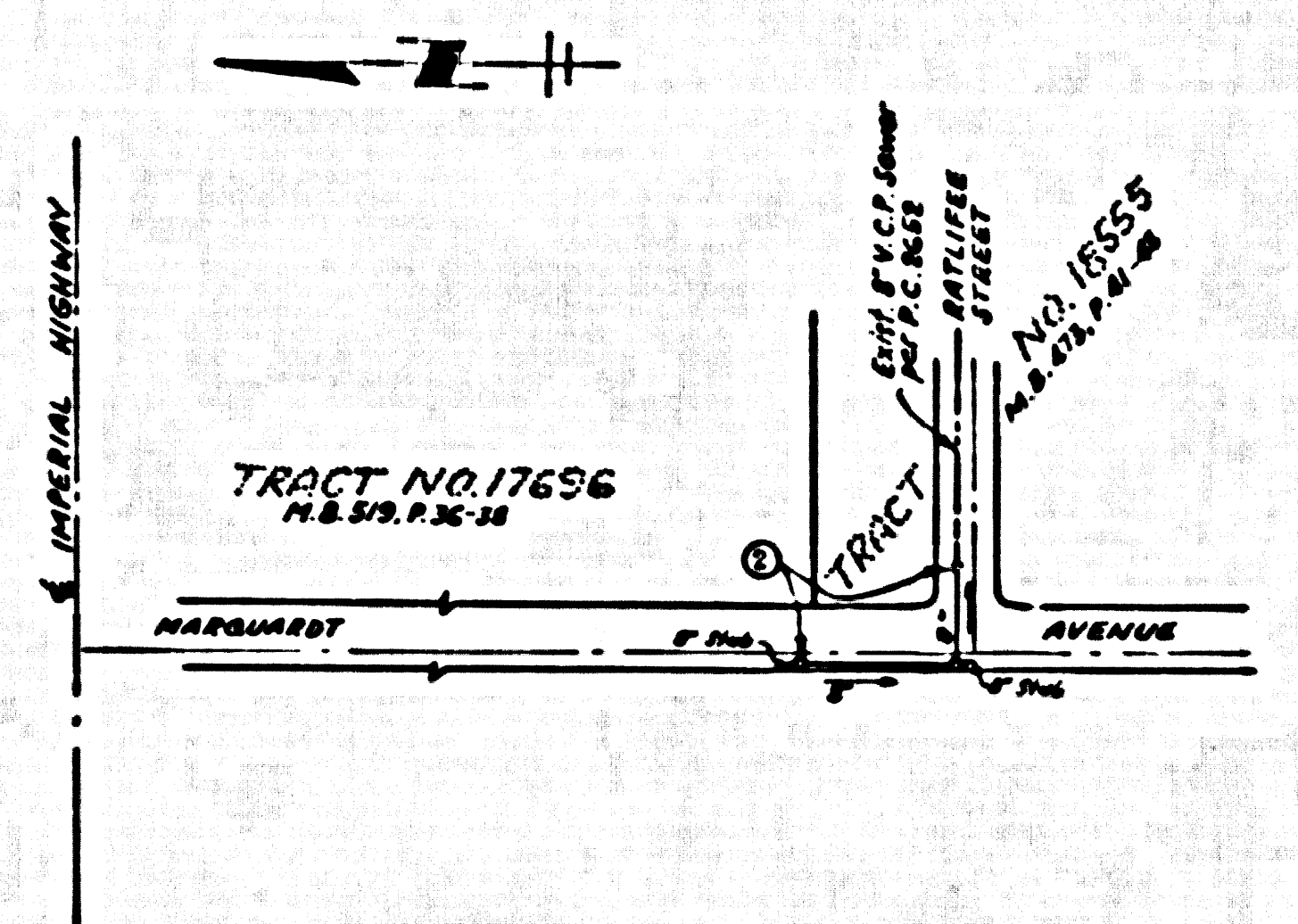


BELFLOWER BLDG. DIST. NO. 4

PROFILE ALIGNMENT AND GRADE OF **P.C. 4158**
SANITARY SEWERS PAGE 1
 TO BE CONSTRUCTED IN
MARGUARDT AVENUE EXTENSION

B.M. 57 NEB F.B. 343-503
 Lead & nail concrete base steel
 fence corners 2' 00" West of Cornerline
 Rd. 2' 45" S. of Imperial Hwy.
 El. 95.812



P.C. 4158
 INDEX MAP
 SCALE 1" = 200'

- NOTES
- PROVIDE STAKES ON THE PROPERTY LINE OR PROPERTY LINES PRODUCED AT RIGHT ANGLES TO THE SEWER LINE AT THE CENTER LINE OF EACH MANHOLE.
 - NO REPRESENTATIVE OF THE COUNTY ENGINEER WILL SURVEY OR LAYOUT ANY PORTION OF THE WORK.
 - THE OWNER OR HIS AUTHORIZED REPRESENTATIVE SHALL FURNISH THE COUNTY ENGINEER WITH GRADE SHEETS AND STATIONING FOR ALL HOUSE LATERALS AND V BRANCHES AND SHALL PROVIDE STAKES FOR THEM AT THEIR PROPER LOCATIONS WITH STATIONING PLANNED MANHOLE AND CHANGES IN LOCATION SHALL BE INDICATED BY WRITING BY THE OWNER OR HIS REPRESENTATIVE.
 - NO REVISIONS SHALL BE MADE IN THESE PLANS WITHOUT THE APPROVAL OF THE COUNTY ENGINEER.
 - USE STANDARD MANHOLE PIPES AND COVERS, S.A.-117, EXCEPT AS NOTED.
 - USE STANDARD STRENGTH PIPE EXCEPT AS NOTED.
 - USE CEMENT MORTAR FOR ALL VITRIFIED CLAY PIPE JOINTS.
 - REINFORCE ALL BRANCH WITHIN PAVED AREA TO MEET L. & A. COUNTY ROAD DEPT., OR CALIF. STATE HIGHWAY DEPT. REQUIREMENTS IN ACCORDANCE WITH PERMITS.
 - ENCASE FOUR FEET OF SEWER AT POINTS OF INTERFERENCE WITH POLES, S.A.-119.
 - HOUSE LATERALS TO BE CONSTRUCTED WITH SUBVERTS AT 20'-FOOTLY LINE 6 JUST BELOW CURB GRADE EXCEPT AS NOTED.
 - ALL STAKE LINES SHALL BE BRICK BETWEEN STRUCTURES, S.A.-104, EXCEPT AS NOTED.
 - FOR ALLOWABLE LEAKAGE TEST USE FORMULA NO. 1 SPEC. SEC. 24
 - MANHOLE TOPS IN UNIMPROVED SLOTTED-WAY TO BE 6" ABOVE FINISHED GRADE.
 - THE PRIVATE ENGINEER IS TO FURNISH THE HOUSE LATERAL, BEGINNING AT THE PROPERTY LINE BEHIND THE ELEVATION OF CENTERLINE OF STREET FOR EACH HOUSE LATERAL, ON THE GRADE SHEET.

PRIVATE CONTRACT NO. 4158

W.S. 34
 1 SHEET 2 PAGES
 SCALE: VERT. 1" = 4' HORIZ. 1" = 40' SEPTEMBER, 1956
 PREPARED IN THE OFFICES OF

Edward J. Esperson
 REG. C. E. NO. 5822

FOR LEGEND SEE PLAN NO. S-A-64

NOTE

GRADES TO WHICH THIS IMPROVEMENT IS TO BE CONSTRUCTED ARE SHOWN ON PLANS AND PROFILES. GRADE POINTS FOR TOP OF CURBS, CENTER LINE OF STREETS, OR CENTER LINE OF ALLEYS ARE SHOWN BY CIRCLES ON PROFILES AT ALL POINTS BETWEEN DESIGNATED POINTS THE GRADE SHALL BE ESTABLISHED SO AS TO CONFORM TO A STRAIGHT LINE DRAWN BETWEEN SAID DESIGNATED POINTS.

ELEVATIONS ARE IN FEET ABOVE U.S.C. & G.S. SEA LEVEL OF 1929.

THE DRAWING AND THE DATA HEREON ARE HEREBY MADE A PART OF THE SPECIFICATIONS.

WORK SHALL BE CONSTRUCTED ACCORDING TO SPECIFICATIONS ON FILE IN THE OFFICE OF THE COUNTY ENGINEER AND SHALL BE PROSECUTED ONLY IN THE PRESENCE OF THE COUNTY ENGINEER.

BEFORE WORK CAN BE STARTED, THE CONTRACTOR MUST OBTAIN A PERMIT TO EXCAVATE IN COUNTY STREETS FROM THE L. & A. COUNTY ROAD DEPT., FILE BY THIS STATE AND MAKE A DEPOSIT WITH THE COUNTY ENGINEER ROOM 234 MAIN AMERICAN BLDG. 233 SO. BROADWAY SUFFICIENT TO COVER THE COST OF CONSTRUCTION INSPECTION AND RECORD PLANS.

APPROVAL OF THIS PLAN BY THE COUNTY OF LOS ANGELES DOES NOT CONSTITUTE A REPRESENTATION AS TO THE ACCURACY OF THE LOCATION OF OR THE EXISTENCE OR NON-EXISTENCE OF ANY UNDERGROUND UTILITY PIPE, OR STRUCTURE WITHIN THE LIMITS OF THIS PROJECT THIS NOTE APPLIES TO ALL PAGES.

IF WORK IS TO BE DONE IN A STATE HIGHWAY, A PERMIT MUST BE OBTAINED FROM THE STATE OF CALIFORNIA, DIVISION OF HIGHWAYS, 128 SOUTH SPRING STREET.

COUNTY OF LOS ANGELES, CALIFORNIA

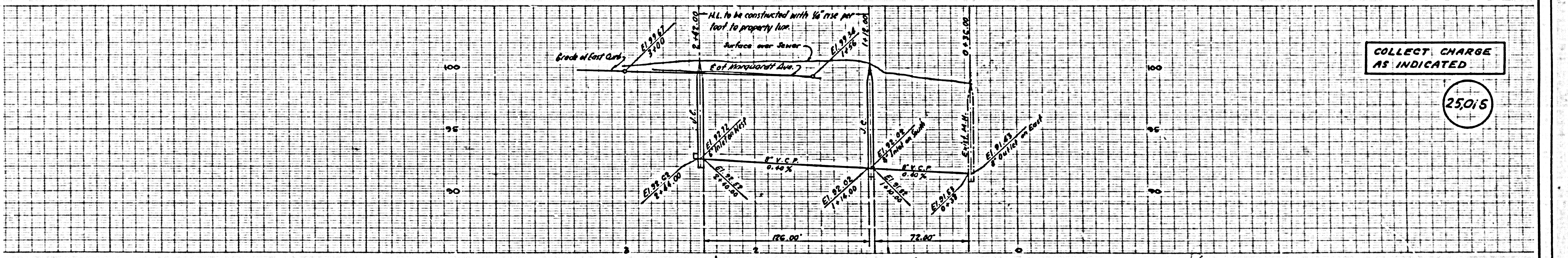
APPROVED, JOHN A. LAMBE, COUNTY ENGINEER
 APPROVED, A. M. RAWN, CHIEF ENGINEER
 REG. SAN. ENG. NO. 12

BY *A. P. Collins* SANITATION ENGINEER
 BY *H. P. ...* OFFICE ENGINEER
 CHECKED BY *R. P. ...* 11-15-56
 OFFICE OF COUNTY ENGINEER, REG. C. E. NO. 7860

CONNECTION CHARGES
 AS INDICATED
L. A. ... 11-12-56

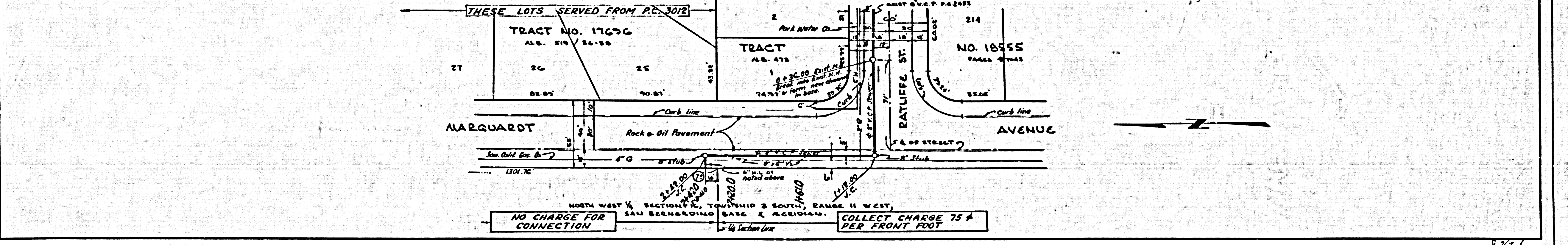
INDUSTRIAL WASTE
 DIVISION
 APPROVED:
Arthur ...

P.C. 4158 PAGE 2



COLLECT CHARGE
 AS INDICATED

25,015



NO CHARGE FOR CONNECTION
 COLLECT CHARGE 75¢ PER FRONT FOOT