

PALMDALE BLDG. DIST. NO. 8.1

PROFILE ALIGNMENT AND GRADE OF **P.C. 4159**
SANITARY SEWERS PAGE **1**
 TO BE CONSTRUCTED IN
TRACT NO 21883 (24,382)

PRIVATE CONTRACT NO. **4159**

W.S. 65

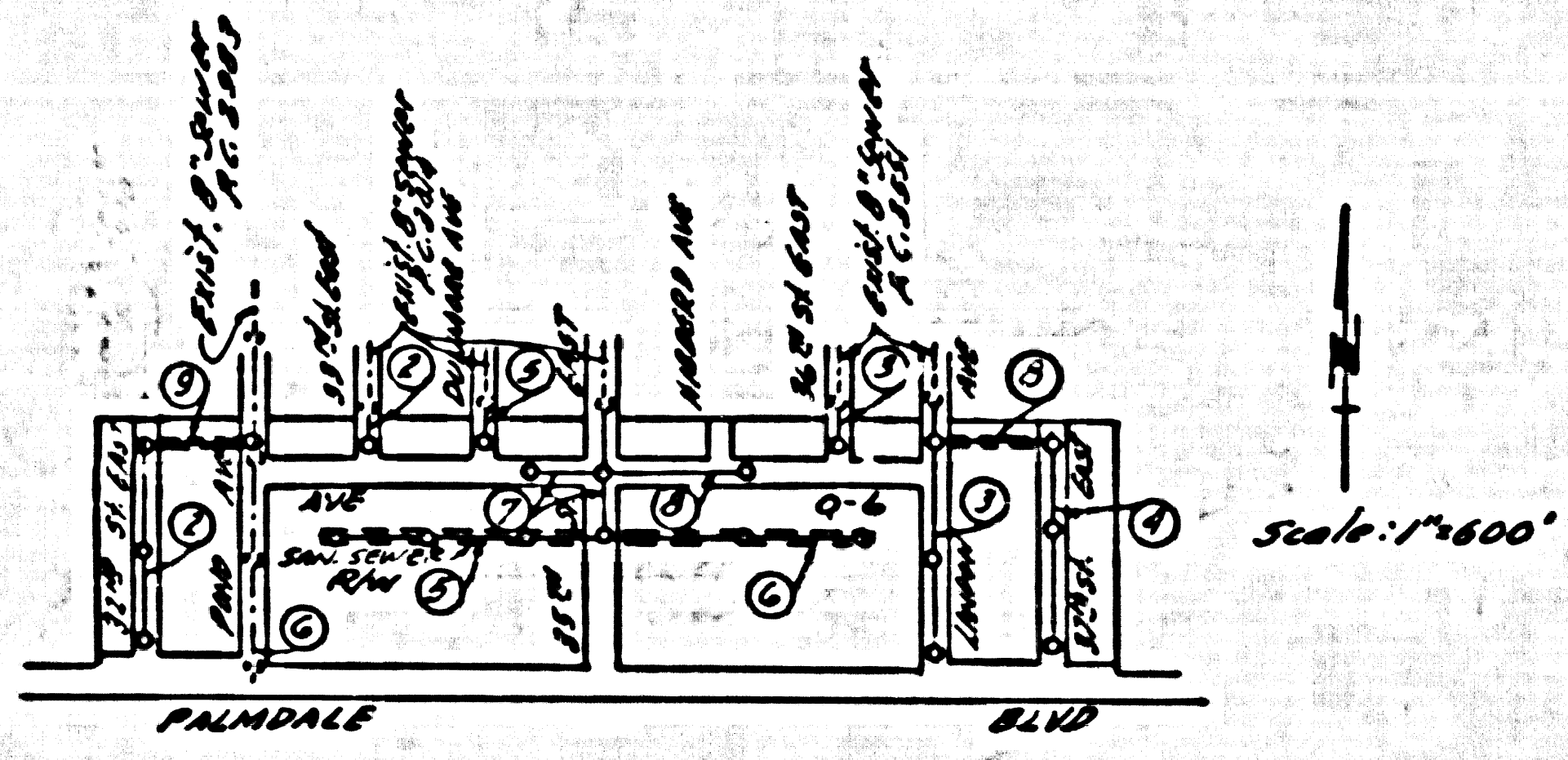
5 SHEETS, 2 PAGES

SCALE: HORIZ. 1" = 40' VERT. 1" = 4'

PREPARED IN THE OFFICES OF

R.L. STUCKEY CO
 REG. C. E. NO. 6067
 FOR LEGEND SEE PLAN NO. S-A-84

B.M. U.S. 2168 El. 2599.161 35'± St. E. of Palmdale Blvd. 2.3 mi E. of Palmdale, 205'± N. of Hwy. top of Conc. man. A bronze disk stamped L.S. 1929



Scale: 1"=40'

- NOTES:
1. PROFILE STAKES ON THE PROPERTY LINE OR PROPERTY LINE PRODUCE AT RIGHT ANGLES TO THE SEWER LINE AT THE CENTER LINE OF EACH BRANCH.
 2. NO REPRESENTATIVE OF THE COUNTY ENGINEER WILL SURVEY OR LAYOUT ANY PORTION OF THE WORK.
 3. THE OWNER OR HIS AUTHORIZED REPRESENTATIVE SHALL FURNISH THE COUNTY ENGINEER WITH GRADE SHEETS AND STATION FOR ALL HOUSE LATERALS AND BRANCHES AND SHALL PROVIDE STAKES FOR THEM AT THEIR PROPER LOCATIONS WITH STATIONING PLAINLY MARKED. ANY CHANGE IN LOCATION SHALL BE REQUESTED IN WRITING BY THE OWNER OR HIS REPRESENTATIVE.
 4. NO REVISIONS SHALL BE MADE IN THESE PLANS WITHOUT THE APPROVAL OF THE COUNTY ENGINEER.
 5. USE STANDARD MANHOLE PLATES AND COVERS, S.A-117.
 6. USE STANDARD STRENGTH PIPE SIZES AS NOTED.
 7. USE CLASS 'B' PIPE FOR ALL VITRIFIED CLAY PIPE JOINTS.
 8. RESURFACE ALL TRENCHES WITHIN PAVED AREA TO MEET L.A. COUNTY ROAD DEPT. OR CALIF. STATE HIGHWAY DEPT. REQUIREMENTS IN ACCORDANCE WITH PERMITS.
 9. BENCH MARK POINTS OF SEWER AT POINTS OF INTERFERENCE WITH POLES, S.A-119.
 10. HOUSE LATERALS TO BE CONSTRUCTED WITH INVERTS AT PROPERTY LINE. SEE ANY SHOW CURB GRADE EXCEPT AS NOTED.
 11. ALL STRUCTURES SHALL BE BRICK SEWER STRUCTURES, S.A-104.
 12. FOR ALLOWABLE SEWAGE TEST USE FORMULA NO. 1 SPEC'L, SEC. 8.
 13. MANHOLE PITS IN UNIMPROVED RIGHTS-OF-WAY TO BE 6" ABOVE FINISHED GRADE.
 14. Ball all joints with 4" cement mortar that are within 20 feet of all property lines or in sanitary sewer rights of way.
 15. The private engineer is to furnish the House Lateral depth of the property line below the top of curb elevation for each House Lateral on the Grade Sheet.

NO CHARGE FOR CONNECTIONS
 7.775 10-2-56

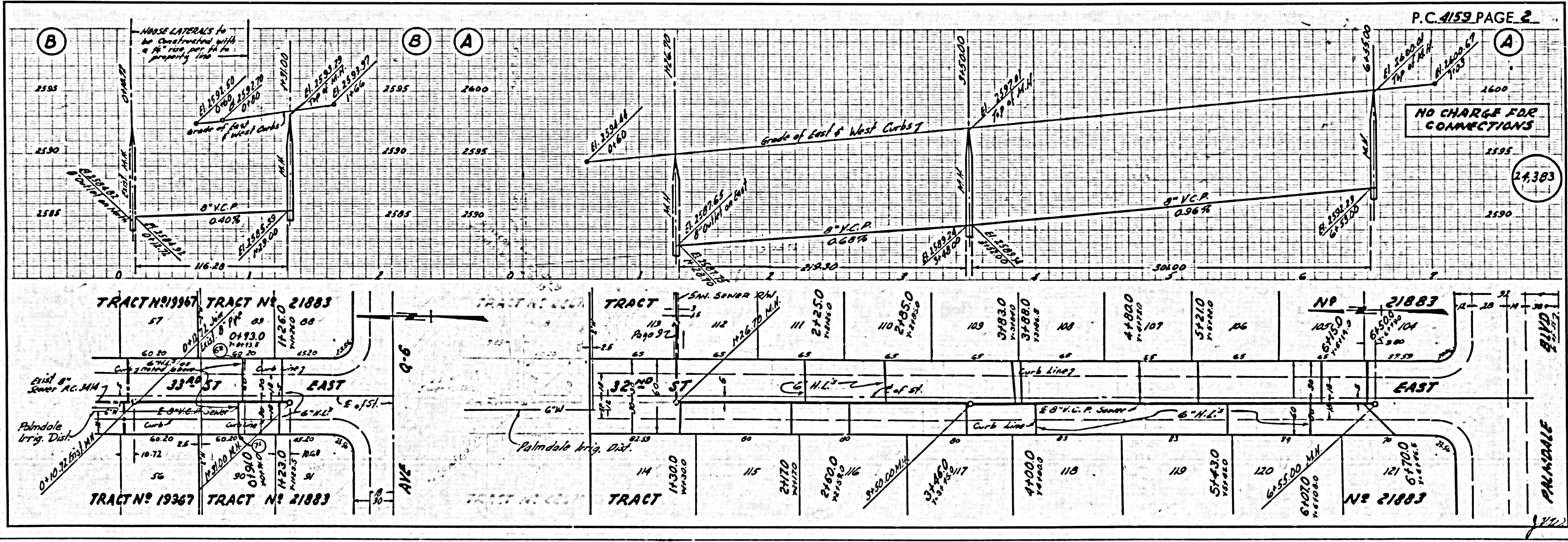
Note:
 Lots 2-8, 92, 93-103 are served by House laterals constructed on P.C. 2383

INDEX MAP
 TRACT NO 21883
 P.C. 4159

NOTE:
 GRADERS TO WHICH THIS IMPROVEMENT IS TO BE CONSTRUCTED ARE SHOWN ON PLANS AND PROFILE GRADE POINTS FOR TOP OF CURBS, CENTER LINE OF STREETS, OR CENTER LINE OF ALLEYS ARE SHOWN BY CIRCLES ON PROFILES AT ALL POINTS BETWEEN DESIGNATED POINTS THE GRADE SHALL BE ESTABLISHED SO AS TO CONFORM TO A STRAIGHT LINE DRAWN BETWEEN SAID DESIGNATED POINTS.
 REVISIONS ARE IN FULL ABOVE W.S.C. # 4159. 2/20/56. 2ND PAGES OF 1956. THE DRAWINGS AND THE DATA HEREON ARE HEREBY MADE A PART OF THE SPECIFICATIONS.
 WORK SHALL BE CONSTRUCTED ACCORDING TO SPECIFICATIONS ON FILE IN THE OFFICE OF THE COUNTY ENGINEER AND SHALL BE PROSECUTED UNDER THE PRESENCE OF THE COUNTY ENGINEER.
 BEFORE WORK CAN BE STARTED, THE CONTRACTOR MUST OBTAIN A PERMIT TO EXCAVATE IN COUNTY STREETS FROM THE L.A. COUNTY ROAD DEPT. FOR 250'± AND MAKE A DEPOSIT WITH THE COUNTY ENGINEER, ROOM 324 SAN JUAN BARRIO BLDG. NO. 233 SO. BROADWAY (APPROXIMATE) TO COVER THE COST OF CONSTRUCTION INSPECTION AND RECORD PLANS.
 APPROVAL OF THIS PLAN BY THE COUNTY OF LOS ANGELES DOES NOT CONSTITUTE A REPRESENTATION AS TO THE ACCURACY OF THE LOCATION OF OR THE EXISTENCE OR NON-EXISTENCE OF ANY UNDERGROUND UTILITY PIPE, OR STRUCTURE WITHIN THE LIMITS OF THIS PROJECT. THIS NOTE APPLIES TO ALL PAGES.
 IF WORK IS TO BE DONE IN A STATE HIGHWAY, A PERMIT MUST BE OBTAINED FROM THE STATE OF CALIFORNIA, DIVISION OF HIGHWAYS, 120 SOUTH SPRING STREET.

COUNTY OF LOS ANGELES, CALIFORNIA

APPROVED, JOHN A. LAMBE, COUNTY ENGINEER
 APPROVED, A. M. RAWN, CHIEF ENGINEER
 BY A.P. Collins SANITATION ENGINEER
 BY J. Posthumus OFFICE ENGINEER
 CHECKED BY R.E. Huber 10-5-56
 OFFICE OF COUNTY ENGINEER, BLDG. C. L. NO. 7860

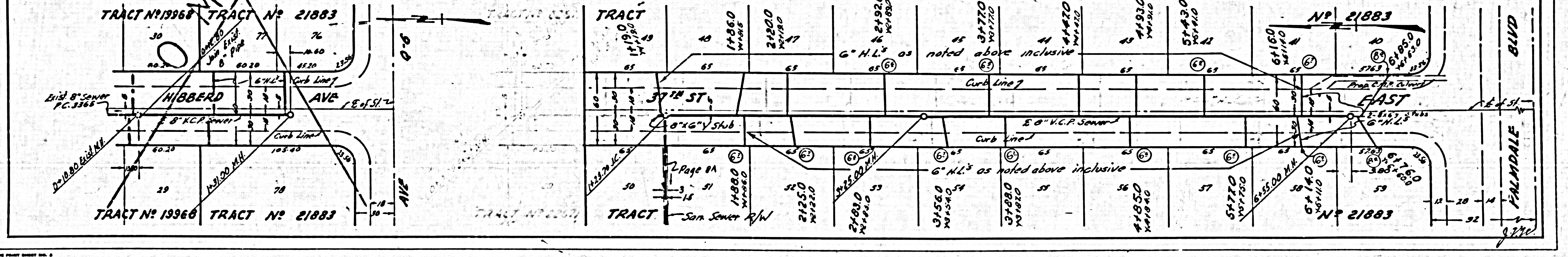
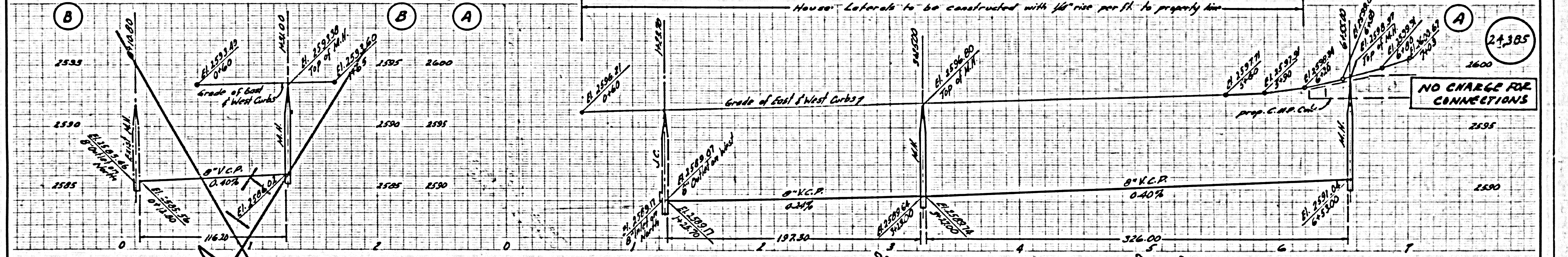
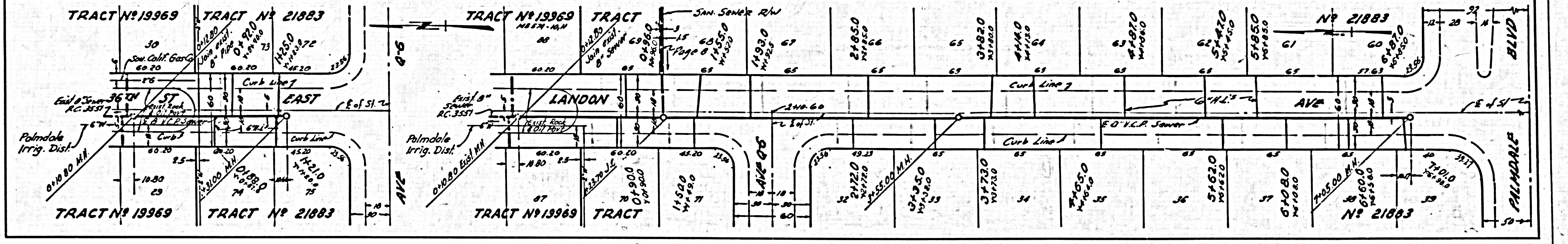
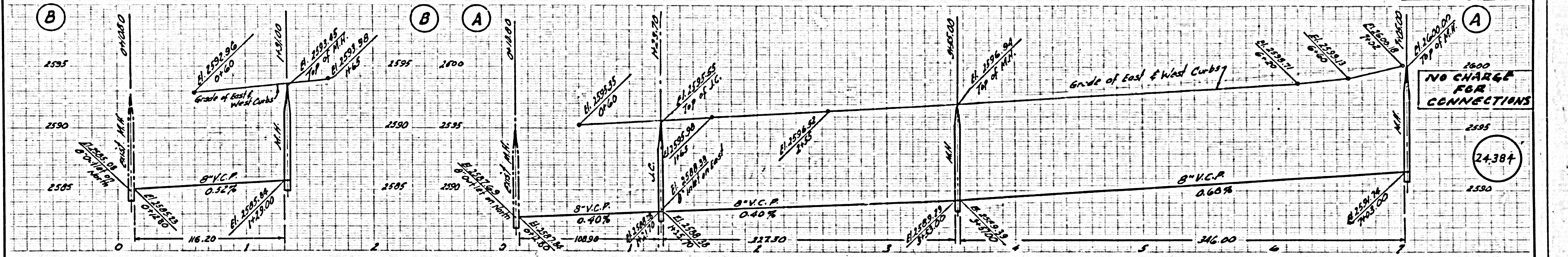


P.C. 4159 PAGE 2

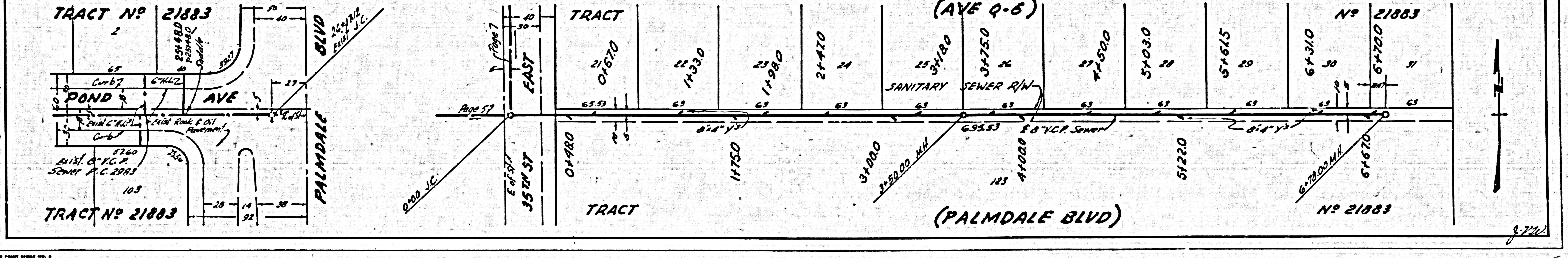
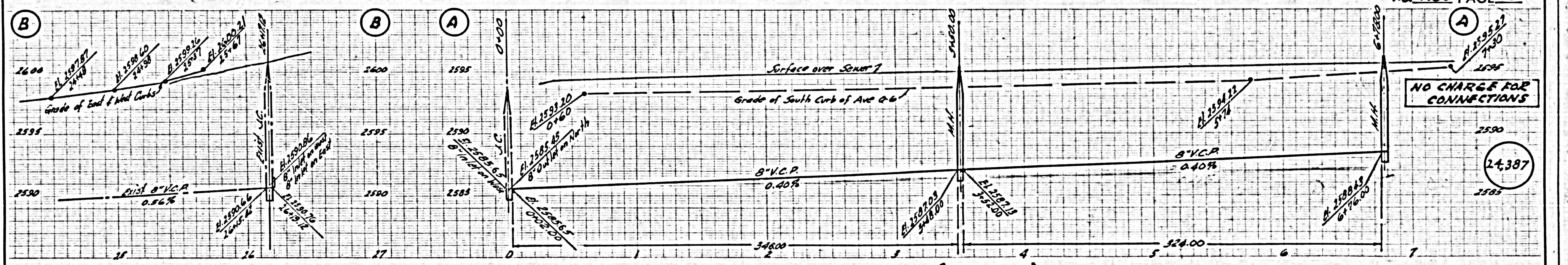
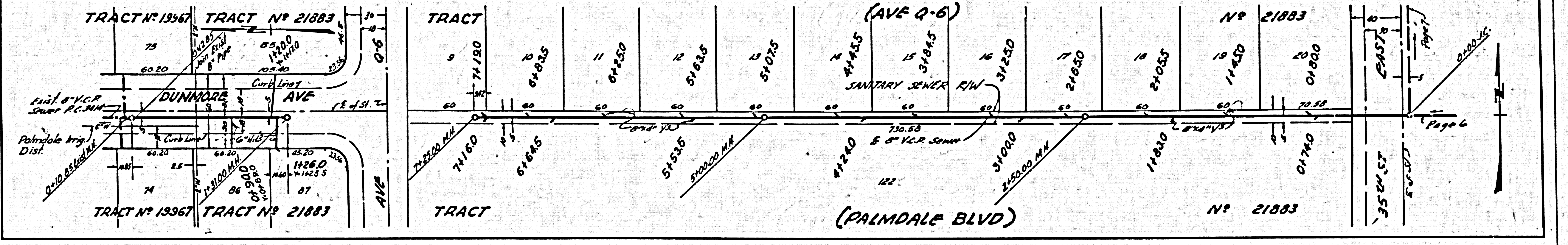
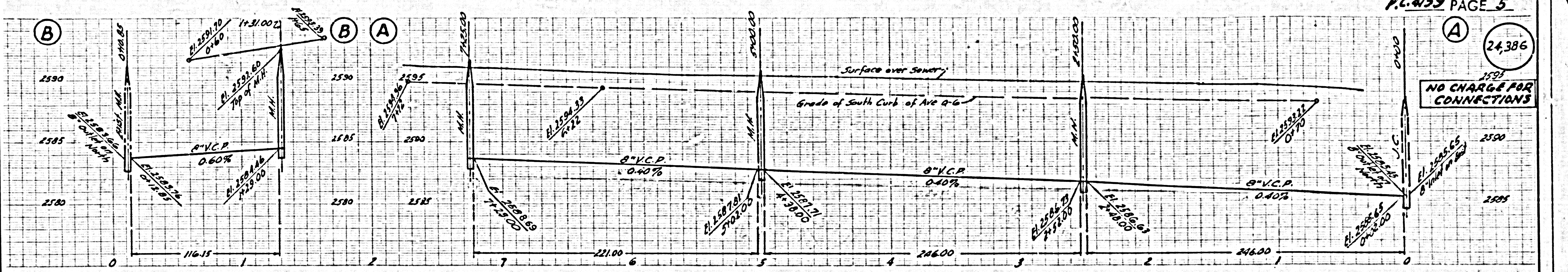
NO CHARGE FOR CONNECTIONS

(24,383)

P.C. 4159



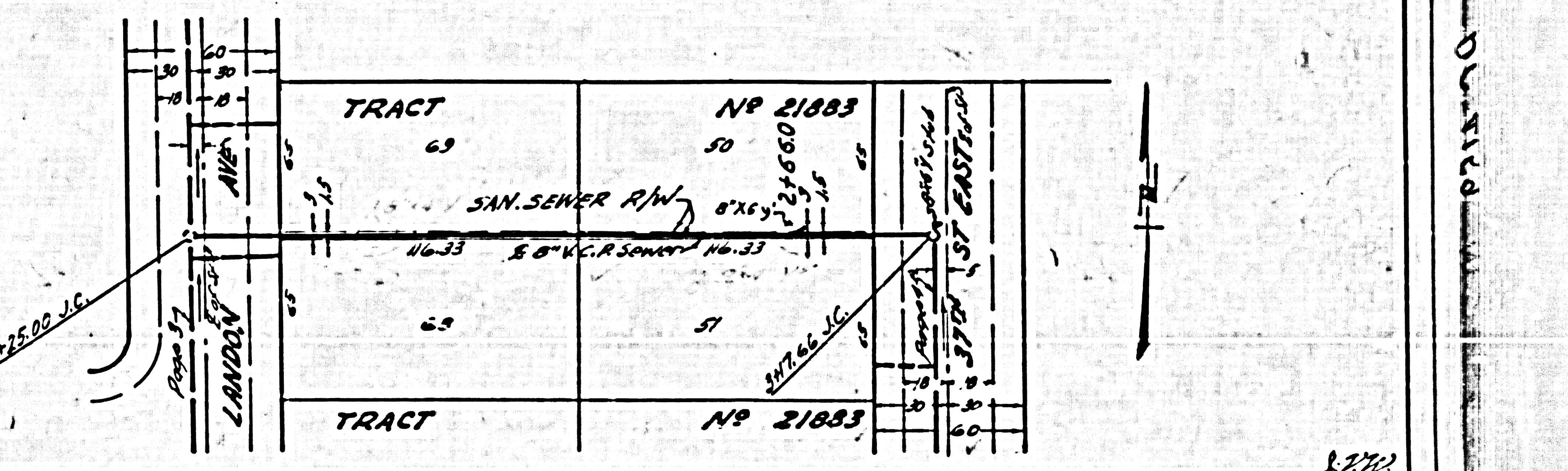
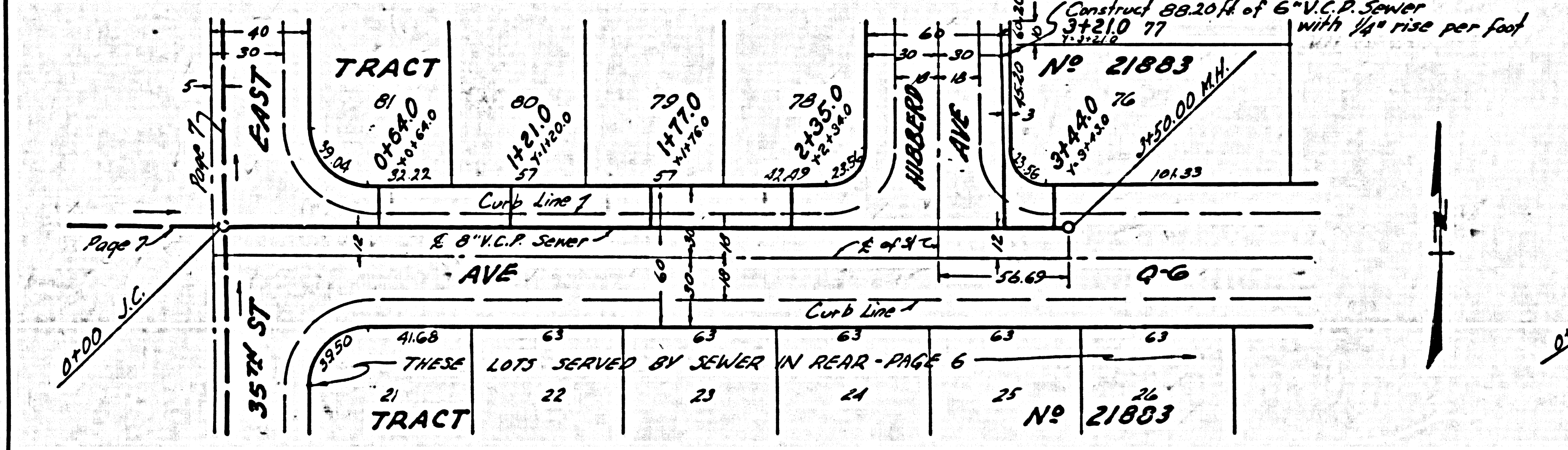
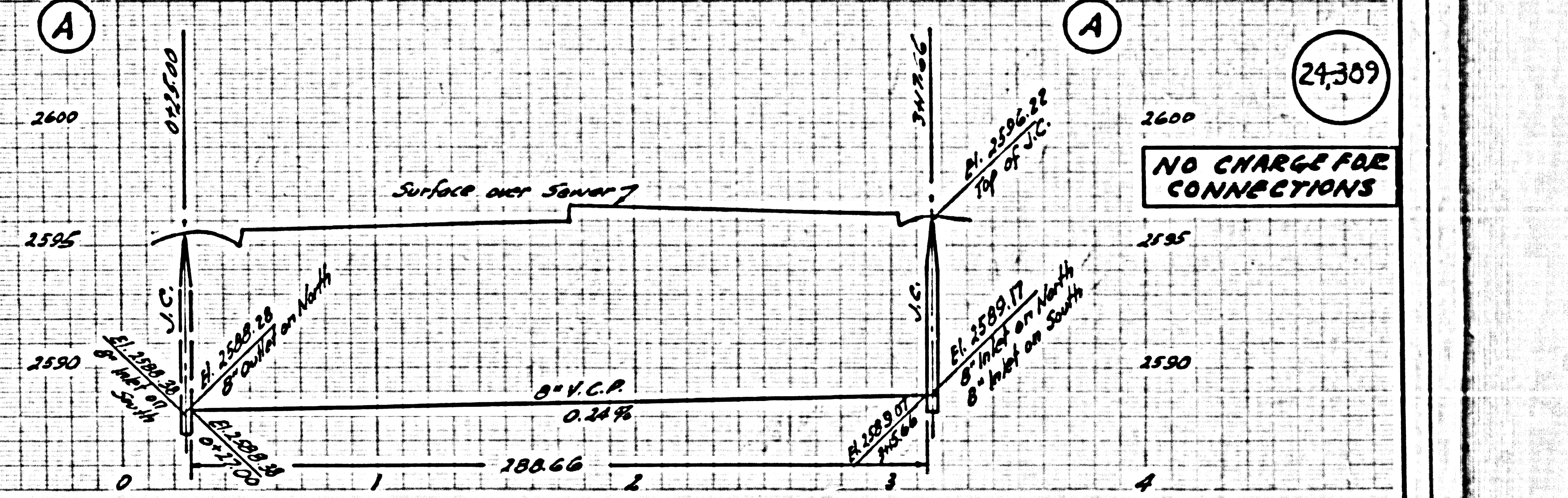
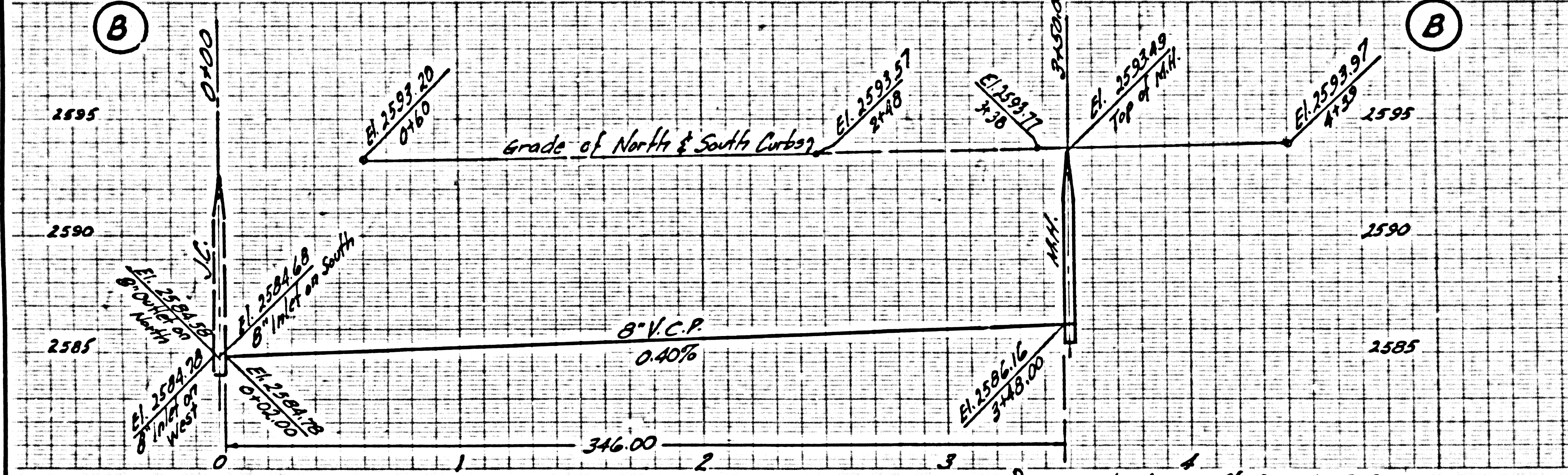
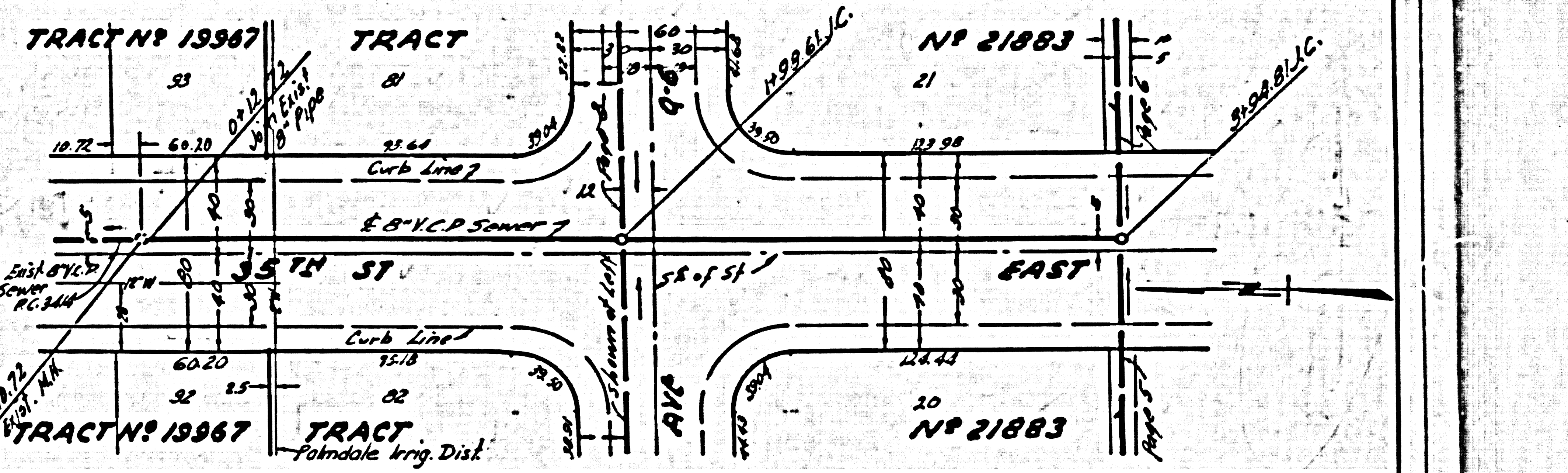
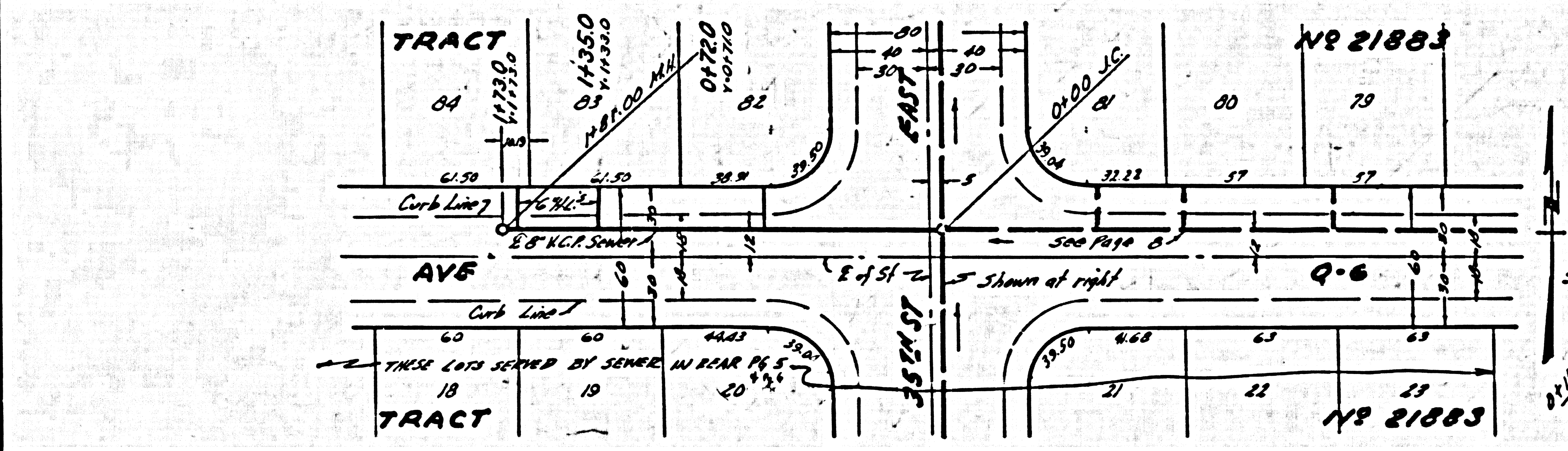
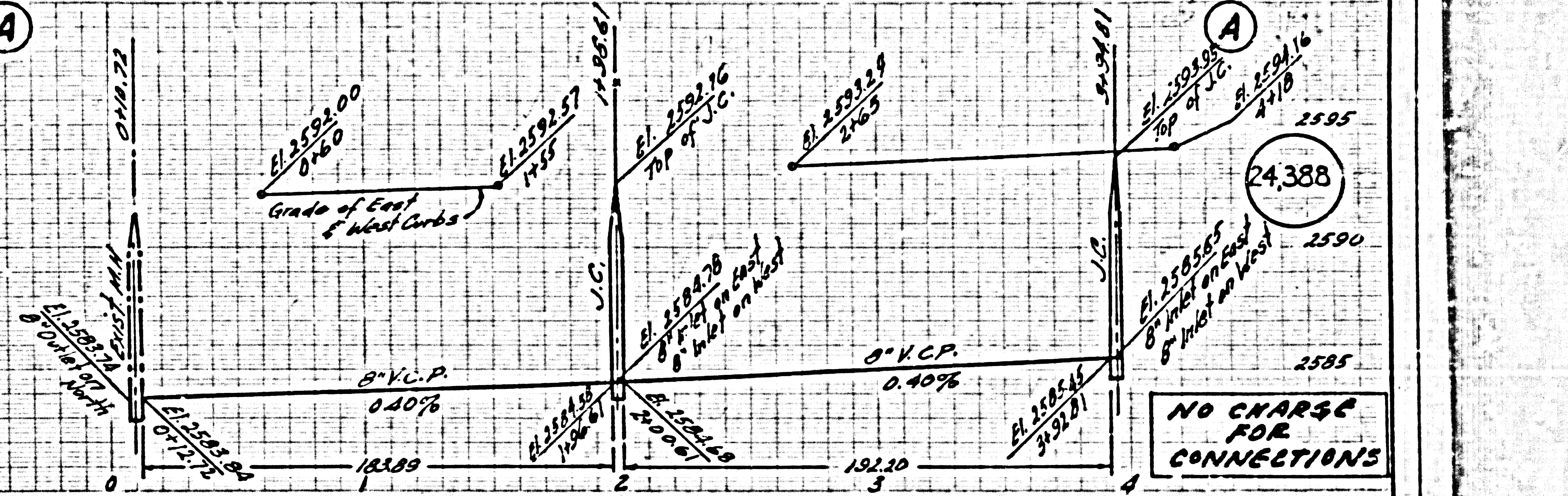
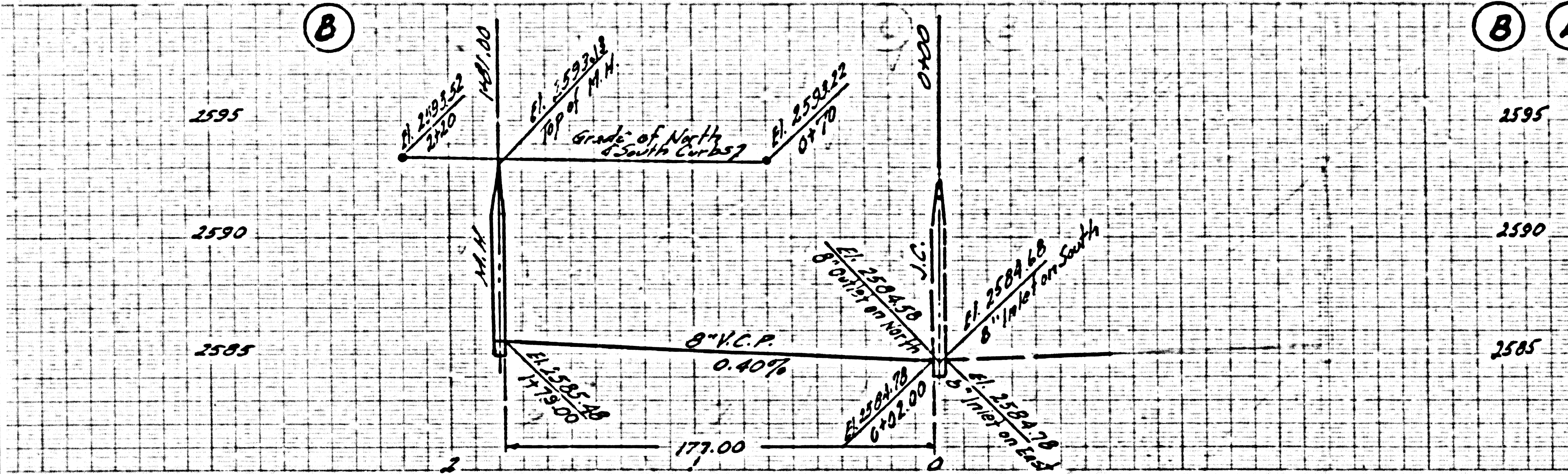
BC 4122



25' G = 6' note
 57' S.E.
 A.C. Q-6

PC 4123

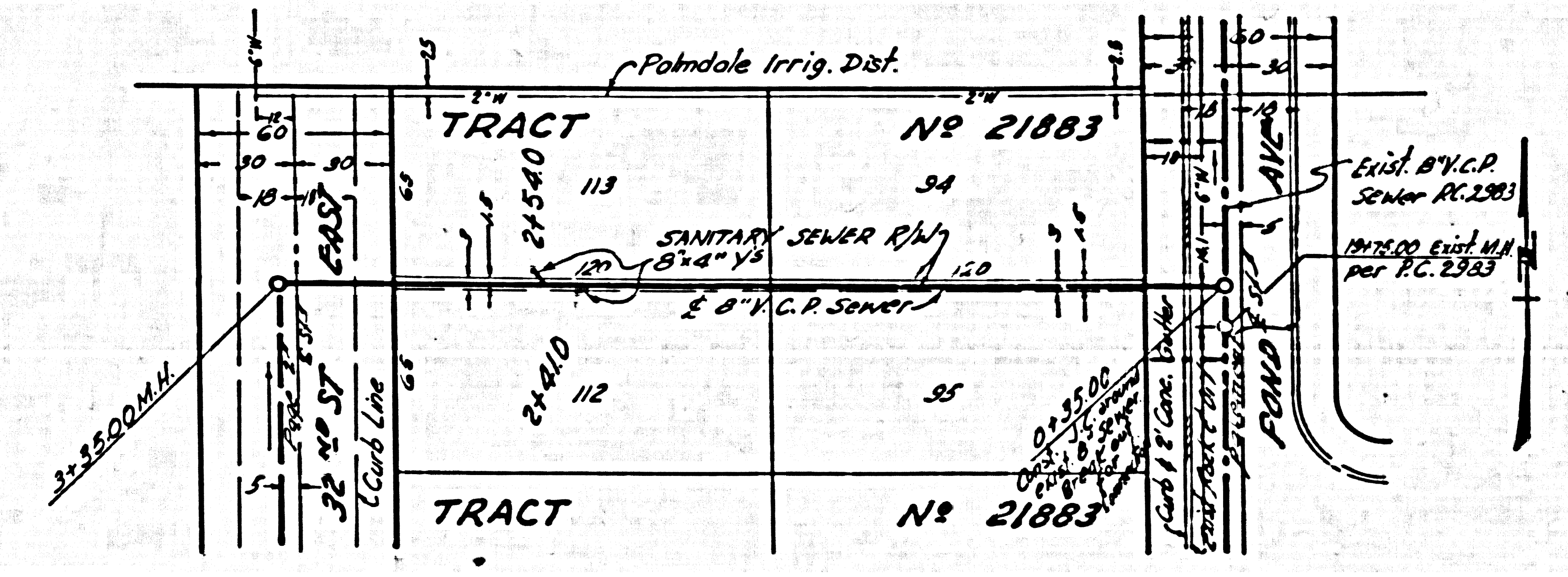
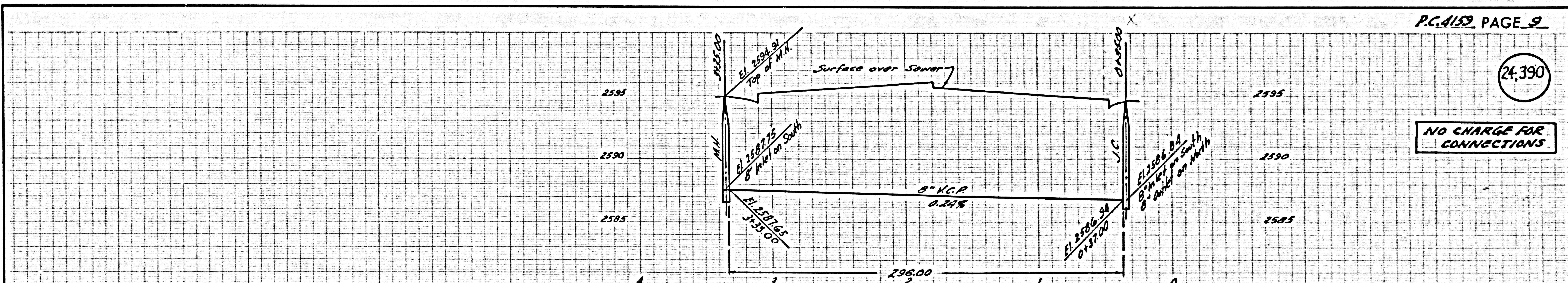
8721



Vertical text on the right margin of the page.

24,390

NO CHARGE FOR CONNECTIONS



D-21159

J. J. J.